



# Logitech MK520 Wireless Keyboard and Mouse Combo User Manual

[Home](#) » [Logitech](#) » Logitech MK520 Wireless Keyboard and Mouse Combo User Manual 

## Contents

- [1 Logitech MK520 Wireless Keyboard and Mouse Combo](#)
- [2 What's In The Box](#)
- [3 Plug And Connect](#)
- [4 Battery Replacement](#)
- [5 F-key Usage](#)
- [6 Keyboard Features](#)
- [7 Mouse Features](#)
- [8 Battery Management](#)
- [9 Troubleshooting](#)
- [10 FAQ's](#)
- [11 Related Posts](#)



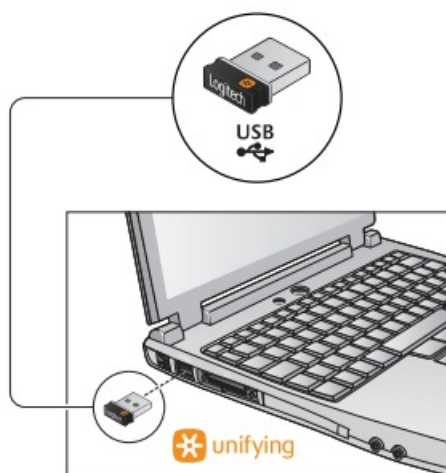
**Logitech MK520 Wireless Keyboard and Mouse Combo**



## What's In The Box

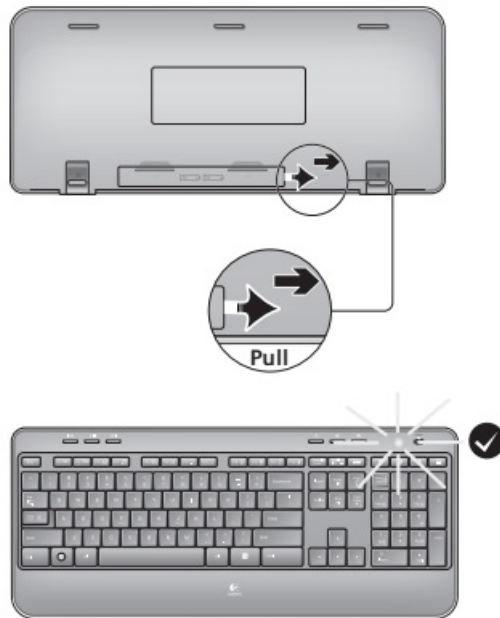


## Plug And Connect

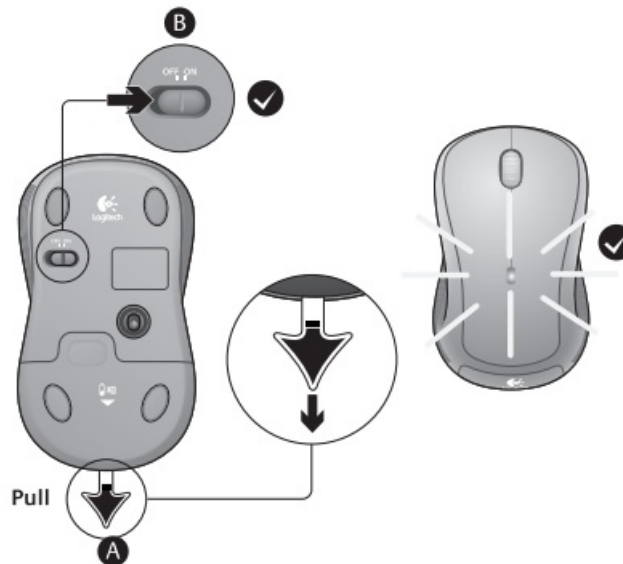


## Battery Replacement

## Keyboard



## Mouse

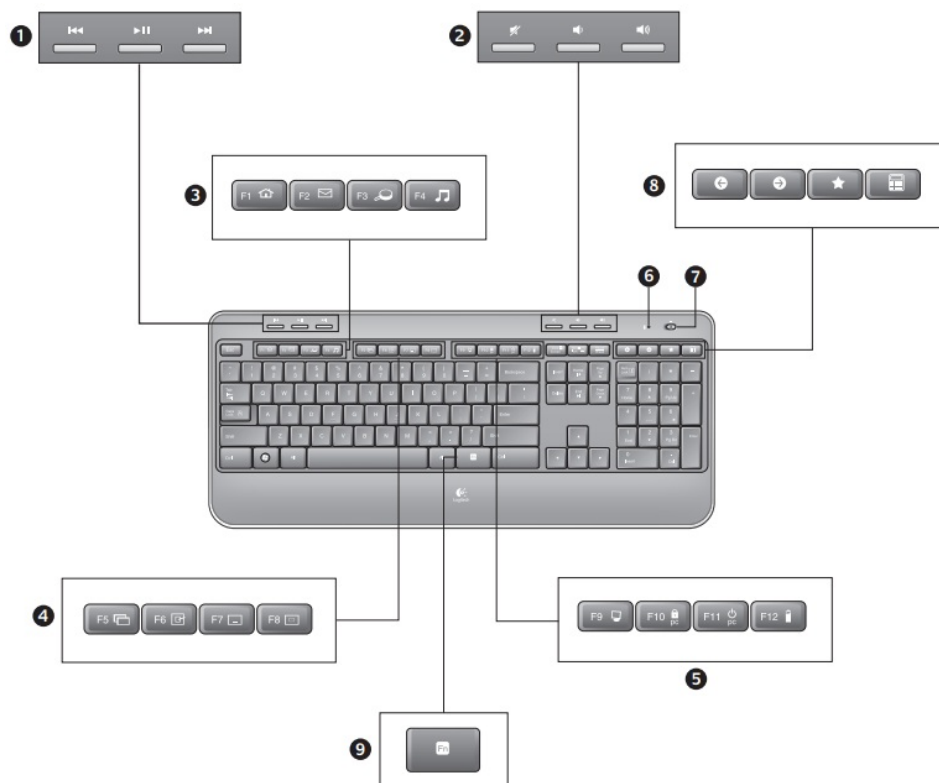
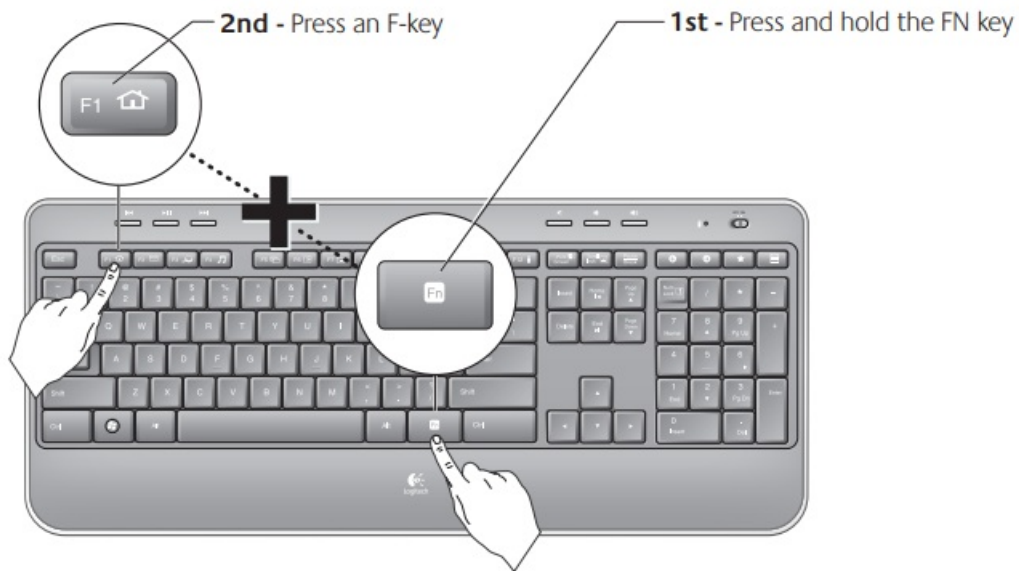


Your Keyboard and mouse are now ready for use. You can download the Logitech® SetPoint™ Software if you want to customize your keyboard keys. [www.logitech.com/downloads](http://www.logitech.com/downloads)

## F-key Usage

User-friendly enhanced F-keys let you launch applications easily. To use the enhanced functions (yellow icons), first press and hold the FN key; second, press the F-key you want to use.

**Tip:** In the software settings, you can invert the FN mode if you prefer to access directly the enhanced functions without having to press the FN key.



## Keyboard Features

1. Multimedia navigation
2. Volume adjustment
3. Application zone
  - FN + F1 Launches Internet browser
  - FN + F2 Launches e-mail application
  - FN + F3 Launches Windows Search\*
  - FN + F4 Launches media player
4. Windows view controls
  - FN + F5 Flip†
  - FN + F6 Shows Desktop
  - FN + F7 Minimizes window
  - FN + F8 Restores minimized windows
5. Convenience zone

- FN + F9 My Computer
- FN + F10 Locks PC
- FN + F11 Puts PC in standby mode
- FN + F12 Keyboard battery status check

6. Battery status indicator

7. Keyboard power switch

8. Internet navigation

- Internet back & forward navigation
- Internet favorites
- Launches calculator

\* One Touch Search if the SetPoint® software is installed. † Application Switcher if the SetPoint® software is installed.

## Mouse Features



1. Battery LED
2. Vertical scrolling
3. On/Off slider
4. Battery-door release
5. Unifying receiver storage

## Battery Management

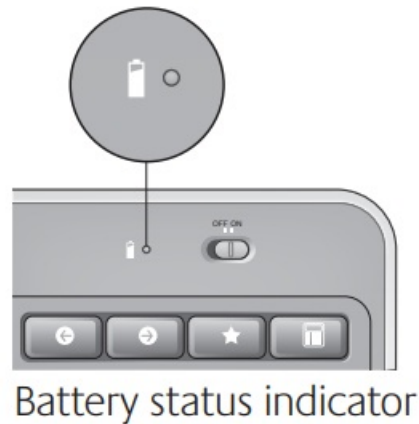
Your keyboard has up to three years of battery life and your mouse has up to one.\*

- **Battery sleep mode**

Did you know that your keyboard and mouse go into sleep mode after you stop using them for a few minutes? This feature helps limit battery usage and eliminates the need to keep switching your devices on and off. Both your keyboard and mouse are up and running immediately once you begin using them again.

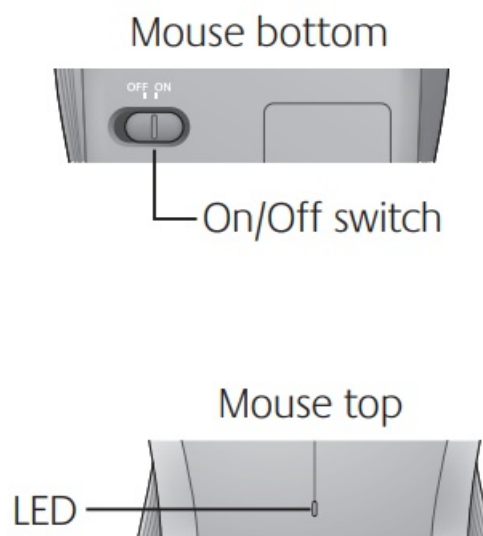
- **How to check the battery level for the keyboard**

Press and hold the FN key, then press the F12 key: If the LED glows green, the batteries are good. If the LED glows red, the battery level has dropped to 10% and you have only a few days of battery power left. You can also turn the keyboard off then back on using the On/Off switch on top of the keyboard.



- **How to check the battery level for the mouse**

Turn the mouse off and then back on using the On/Off switch on the mouse bottom. If the LED on top of the mouse glows green for 10 seconds, the batteries are good. If the LED blinks red, the battery level has dropped to 10% and you have only a few days of battery power left.



\* Battery life varies with usage and computing conditions. Heavy usage usually results in shorter battery life.

## **Plug it. Forget it. Add to it.**

You've got a Logitech® Unifying receiver. Now add a compatible wireless keyboard or mouse that uses the same receiver. It's easy. Just start the Logitech® Unifying software\* and follow the onscreen instructions. For more information and to download the software, visit [www.logitech.com/unifying](http://www.logitech.com/unifying)\*Go to Start / All Programs / Logitech / Unifying / Logitech Unifying Software.



## Troubleshooting

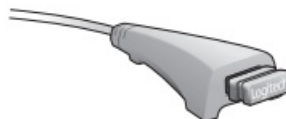
The keyboard and mouse are not working

- **Check the USB connection**

Also, try changing USB ports.

- **Move closer?**

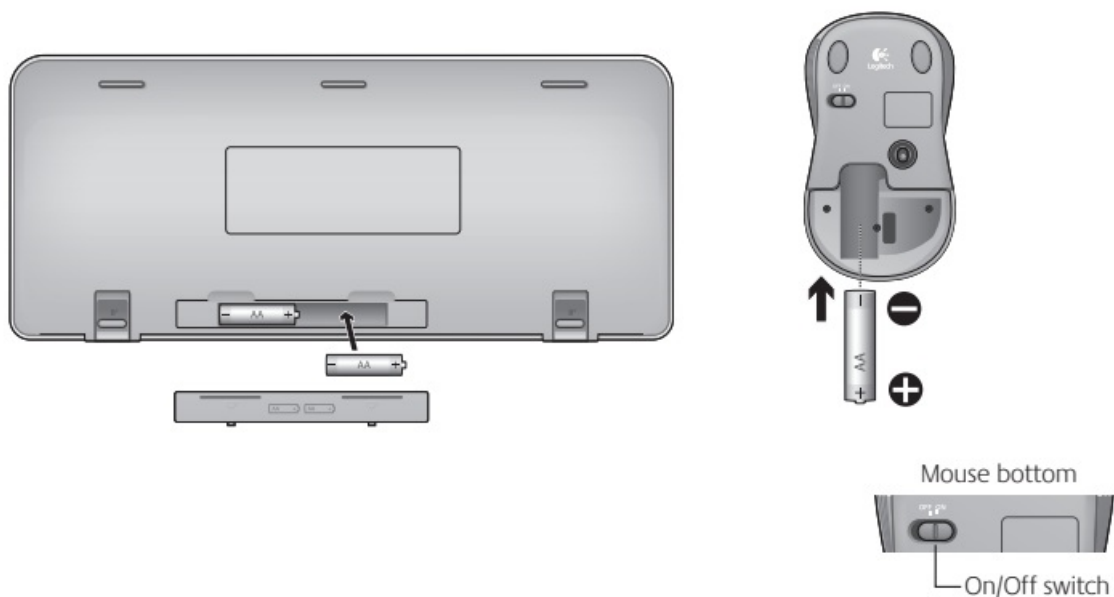
Try moving the keyboard and mouse closer to the Unifying receiver, or plug the Unifying receiver into the receiver extender cable to bring it closer to the keyboard and mouse.



- **Check battery installation**

Also, check the battery power of each device. (See Battery management for more information.)

On the mouse bottom, slide the On/Off switch right to turn on the mouse. The Battery LED on the mouse top case should light green for 10 seconds. (See Battery management for more information.)



- **Are you experiencing slow or jerky cursor movement?**

Try the mouse on a different surface (e.g., deep, dark surfaces may affect how the cursor moves on the computer screen).

- **Is the keyboard turned on?**

Slide the keyboard Off/On switch to the On position, as shown in the image below. The keyboard Status icons should light up.



- **Re-establish the connection**

Use the Unifying software to reset the connection between the keyboard/mouse and the Unifying receiver. Refer to the Unifying section in this guide for more information.

For additional help, Also visit [www.logitech.com/comfort](http://www.logitech.com/comfort) for more information about using your product, and for ergonomics.

## FAQ's

What is included in the Logitech MK520 Wireless Keyboard and Mouse Combo package?

The package includes a wireless keyboard, a wireless mouse, and a Logitech Unifying receiver.

How do I connect the keyboard and mouse to my computer?

Simply plug the Logitech Unifying receiver into a USB port on your computer, and the keyboard and mouse will automatically connect.

How do I replace the batteries in my keyboard and mouse?

To replace the batteries, simply slide the battery door open on the bottom of each device, remove the old batteries, and insert new ones.

How do I use the enhanced functions (yellow icons) on my keyboard?

Press and hold the FN key, then press the F-key you want to use.

How do I check the battery level for my keyboard and mouse?

To check the battery level for the keyboard, press and hold the FN key, then press the F12 key. If the LED



glows green, the batteries are good. If the LED glows red, the battery level has dropped to 10%. To check the battery level for the mouse, turn it off and then back on using the On/Off switch on the bottom. If the LED on top of the mouse glows green for 10 seconds, the batteries are good. If the LED blinks red, the battery level has dropped to 10%.

Can I use a different wireless keyboard or mouse with my Logitech Unifying receiver?

Yes, you can add a compatible wireless keyboard or mouse that uses the same receiver by starting the Logitech Unifying software and following the onscreen instructions.

What should I do if my keyboard and mouse are not working?

First, check the USB connection and try changing USB ports. Also, try moving the keyboard and mouse closer to the Unifying receiver or check the battery power of each device. If you are experiencing slow or jerky cursor movement, try the mouse on a different surface. If the keyboard is not turned on, slide the Off/On switch to the On position. If none of these solutions work, use the Unifying software to reset the connection between the keyboard/mouse and the Unifying receiver.

How do I sync my Logitech K520 keyboard?

Slide the keyboard Off/On switch to the On position, as shown in the image below. The keyboard Status icons should light up. Re-establish the connection. Use the Unifying software to reset the connection between the keyboard/mouse and Unifying receiver.

What is the range of a Logitech wireless keyboard?

Plus, reliable wireless up to 10 meters (33 feet) 10. —thanks to Logitech Advanced 2.4 GHz wireless.

Do I need to turn off my Logitech wireless keyboard and mouse?

You don't have to switch the keyboard or the mouse off. Although there is a switch on each device. The batteries last a long time (with my usage).

**Download This PDF Link: [Logitech MK520 Wireless Keyboard and Mouse Combo User Manual](#)**