

Logitech Harmony Ultimate One Remote



Logitech Harmony Ultimate One Remote User Manual

[Home](#) » [Logitech](#) » Logitech Harmony Ultimate One Remote User Manual 

Contents

- [1 Logitech Harmony Ultimate One Remote User Manual](#)
- [2 Test your setup](#)
- [3 Home/Activities](#)
- [4 Gestures & Gesture Hints](#)
- [5 Troubleshooting](#)
- [6 References](#)
- [7 Related Posts](#)

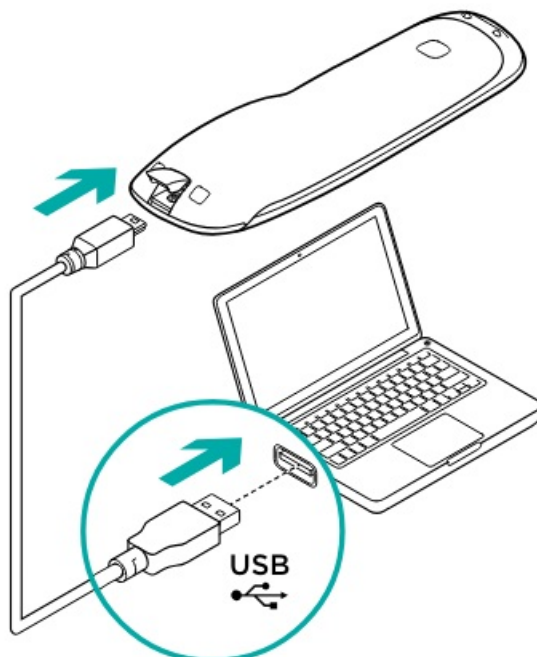


Logitech Harmony Ultimate One Remote User Manual



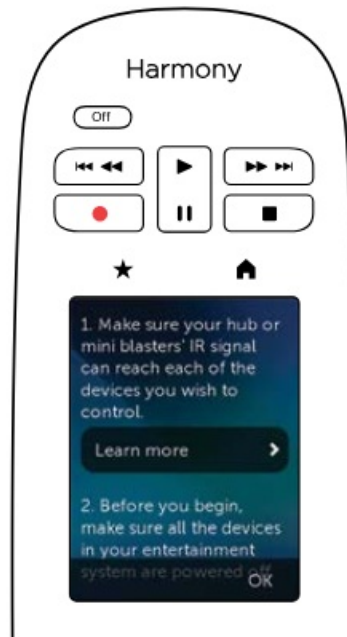
Program your Harmony Ultimate One

Go to setup.myharmony.com on your computer and create a MyHarmony account. You will be prompted to connect your remote using the USB cable provided. Follow the instructions to set up your remote.



Test your setup

Once you've synced your account settings to your remote, follow the instructions on your remote to make sure you can control your entertainment system. You will be guided to test your setup.



Home/Activities

The button above the screen accesses your Activities. Tap an Activity to turn on your entertainment system or to switch to another Activity.



Favorites

The button above the screen shows your Favorite Channels. Tap a Favorite to tune in to that channel. If your system is off, tapping a Favorite will start your Watch TV Activity and then tune to that channel. You can use Favorites to quickly navigate your on-screen TV guide as well.



Activity Commands & Numpad

Once you start an Activity, you can access on-screen commands to control your devices. Swipe left or right to switch between number pad, command list, and Favorite Channels (when available for that Activity).

Gestures & Gesture Hints

When an Activity is running, swiping up from the bottom of any screen will display the gesture screen. Here, simple taps and swipes will perform functions related to the current Activity such as changing the volume, skipping forward or backward, pausing and playing, etc. Tap the button at the top to see what gestures are available for each Activity.

Menu

Tap the icon on any screen to get help if your AV devices are out of sync, customize the current screen you're on, access individual AV device controls and access remote-related settings.

Troubleshooting

Harmony Remote is not detected by setup.myharmony.com

- Connect the remote to a different USB port.
- Visit setup.myharmony.com using a different browser.
- Check that the USB cable is securely connected to both your computer and the remote.
Note: The USB cable needs to be connected directly to the remote, not the charger.
- You can't connect your remote to your account while the remote is in the charger.
- Reboot your remote. (Press and hold the Off button until the LCD screen turns off and then back on.)
- Restart your computer.
- The Harmony remote didn't start an Activity correctly.
- Press the menu button on your remote and select Help.
- The Harmony remote is not responding.
- Reboot your remote. (Press and hold the Off button until the LCD screen turns off and then back on.)

Support Info

There's more information and support online for your product.

Please visit www.logitech.com/support/harmony-ultimate-one where you can find:

- Frequently asked questions
- Troubleshooting
- Support Community
- Online Documentation
- Warranty Information
- Phone and email support information

Looking for set-up videos, support articles or Harmony community forums?

Find more information online: www.logitech.com/support/harmony-ultimate-one

2014 Logitech. All rights reserved. Logitech, the Logitech logo, and other Logitech marks are owned by Logitech and may be registered. All other trademarks are the property of their respective owners. Logitech assumes no responsibility for any errors that may appear in this manual. Information contained herein is subject to change without notice.

Download PDF: [Logitech Harmony Ultimate One Remote User Manual](#)

References

- [User Manual](#)

Manuals+, Privacy Policy

This website is an independent publication and is neither affiliated with nor endorsed by any of the trademark owners. The "Bluetooth®" word mark and logos are registered trademarks owned by Bluetooth SIG, Inc. The "Wi-Fi®" word mark and logos are registered trademarks owned by the Wi-Fi Alliance. Any use of these marks on this website does not imply any affiliation with or endorsement.