

Logitech Harmony Pro Remote



# Logitech Harmony Pro Remote User Manual

[Home](#) » [Logitech](#) » Logitech Harmony Pro Remote User Manual 

## Contents

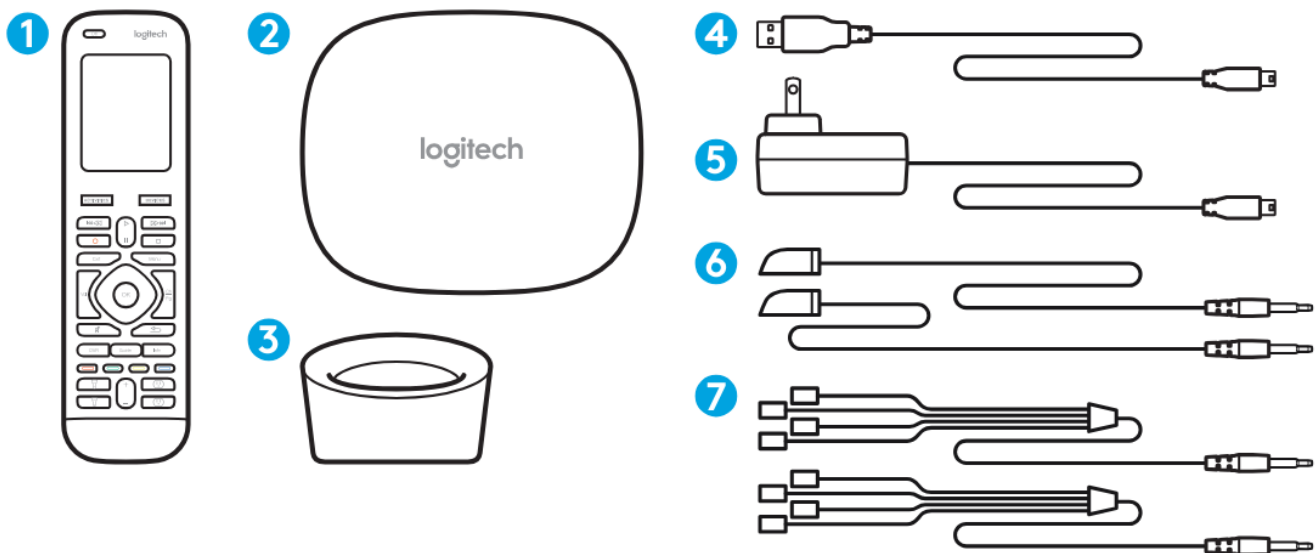
- 1 [Logitech Harmony Pro Remote User Manual](#)
- 2 [Package contents](#)
- 3 [Mobile App Setup Overview](#)
- 4 [References](#)



**Logitech Harmony Pro Remote User Manual**



## Package contents



1. Harmony Pro remote
2. Harmony Hub
  - Controls devices via IR, Bluetooth®, or Wi-Fi
3. Charging station
4. USB cable
  - Set up hub via PC or Mac if access to a mobile device is not available.
5. Power adapter

- Provides power to the Harmony Hub

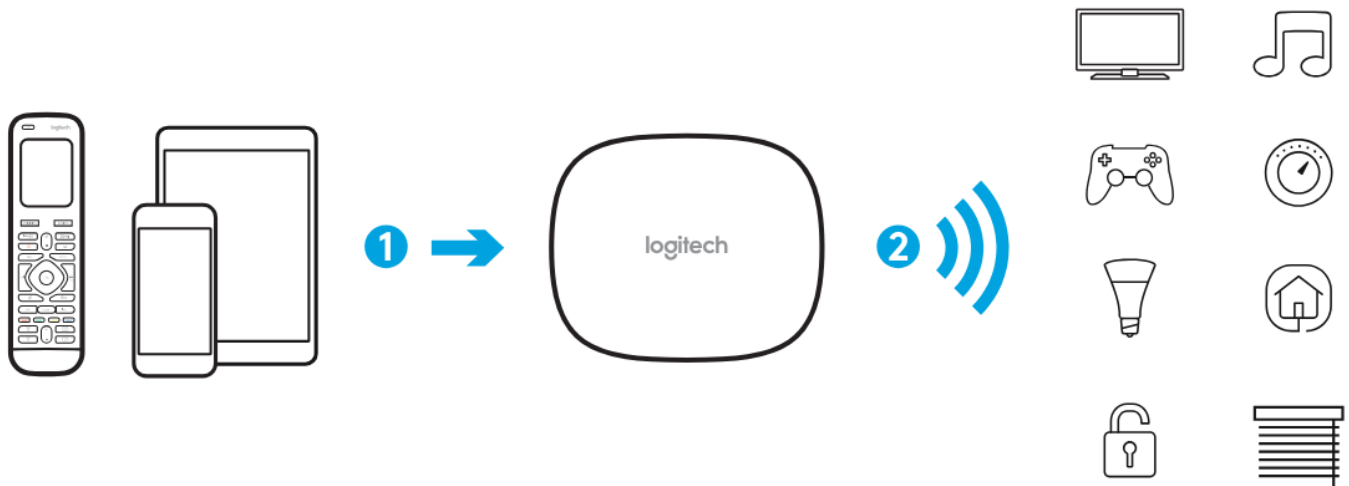
#### 6. 2 IR mini blasters

- Extend IR coverage when used in combination with the Harmony Hub

#### 7. 2 Precision IR cables and 8 IR emitter covers

- IR emitters attach directly to Device IR windows for in-cabinet control.

### Congratulations on the purchase of Harmony Pro



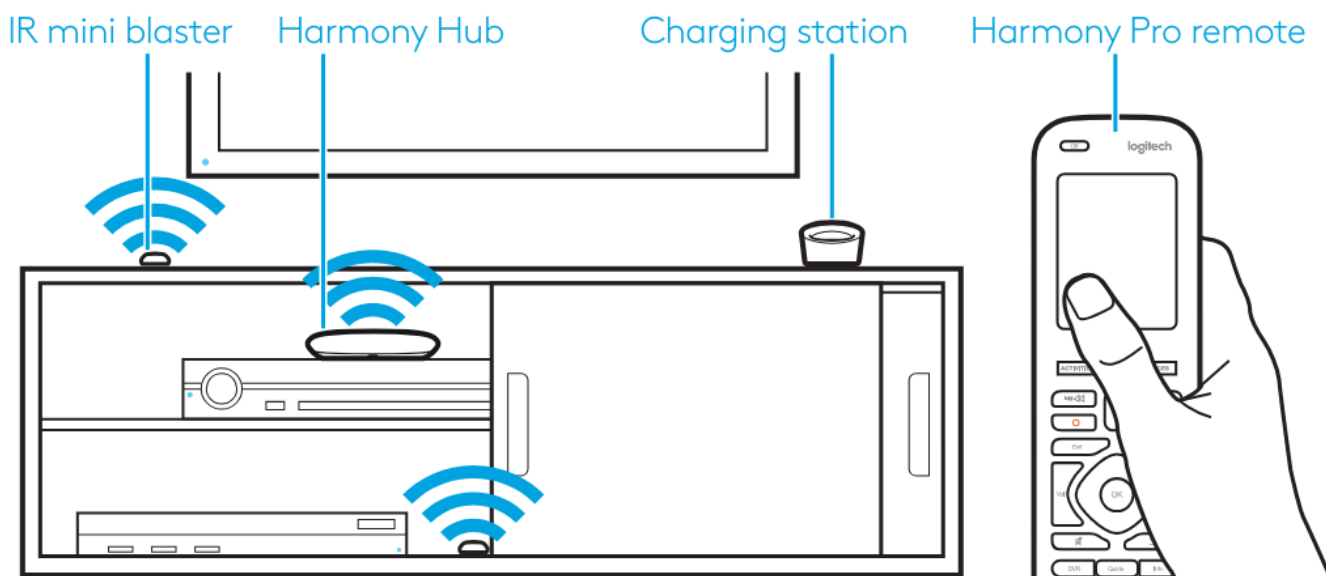
The Harmony Hub is the centre of your Harmony system—always keep it powered on!

1. The hub receives commands from the remote or mobile app. The remote itself does not send commands directly to your devices.
2. The hub sends commands to your audio video and home control devices in the form of Bluetooth, Wi-Fi, and infrared signals (IR).
3. The remote can be configured to send IR signals directly to devices. By default, it will communicate to the hub using RF signals, as shown above.

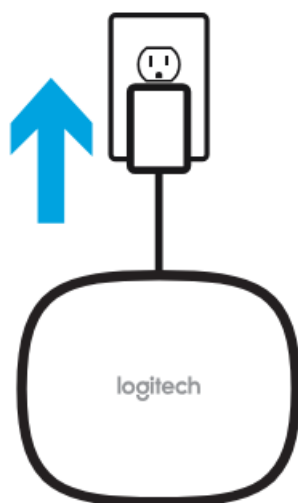
### Let's get started

#### STEP 1

Position the Harmony Hub



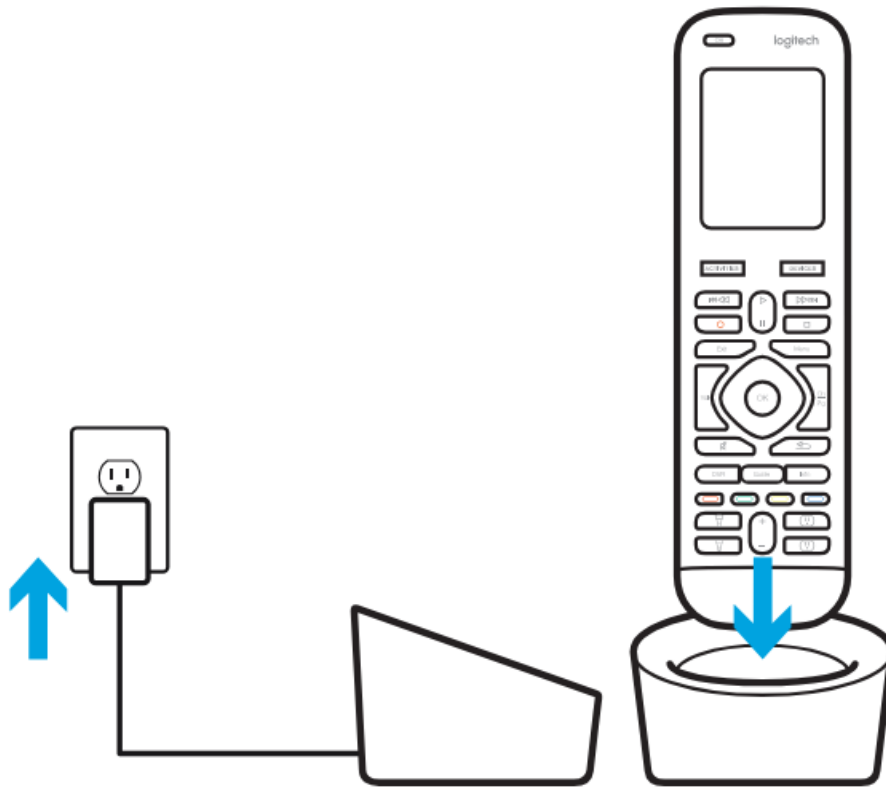
The Harmony Hub can be placed in any unobstructed location where IR signals can be transmitted to AV equipment or it can be placed behind closed cabinets with the IR mini blaster transmitters connected to the hub and positioned as shown above. Once plugged in, the hub takes approx. 30 seconds to power up. The LED will glow red when plugged in. Once it has been successfully paired and has joined your home network, it will glow green (Step 3).



## STEP 2

### Charge your Remote

Plug in the charging station and place the remote in it. Keep the remote in the charging station until setup is complete. The charging station should be in the same room as your hub to optimize communication between the remote and the hub.



### STEP 3

#### Install the Harmony App



- Visit the Apple App Store or Google Play and install the Harmony App.
- Launch the app, select the Set Up New Remote button, and follow the setup instructions.
- Alternatively, you can set up your Harmony Pro using a PC/Mac.
- Visit [setup.myharmony.com](http://setup.myharmony.com) to download the Harmony desktop setup software.

Note: If you have an iPhone 4, iPad 1 iPad 2, or an Android device that does not support Bluetooth, please visit [setup.myharmony.com](http://setup.myharmony.com) on a computer to connect the hub to your Wi-Fi network before beginning Step 3 of mobile setup.

- For more detailed instructions and product info, please visit [support.myharmony.com/pro](http://support.myharmony.com/pro)
- The remainder of the setup will be done using your mobile device. See the next section for an overview of what to expect.

#### Mobile App Setup Overview

- After you download and open the Harmony Mobile app, you will be guided through the following steps:
- Connect the hub to Wi-Fi. Using your mobile device's Bluetooth, connect your hub to your wireless network.
- Create a Harmony account.

- Scan your Wi-Fi network for devices that can be controlled by Harmony (e.g. Roku, Sonos, Hue, Smart TVs).
- Add home entertainment devices for additional devices not found during the Wi-Fi scan (e.g. TV, cable box, AVR, game console, Blu-ray player).
- Add home control devices. Harmony supports various devices such as select lights, locks, thermostats and home control platforms. See the Home Controls Explained section for further details.
- Create Activities. You'll be guided through creating Activities such as watching TV, Listening to Music, and playing Xbox. See the One-Touch Activities section for further details.
- Software Update: Your remote's software may need to be updated. If necessary (you will be informed after completing the mobile setup), simply keep your remote in the cradle.
- The amount of time remaining to complete the update will be displayed on the remote's screen.

### Home Controls Explained

Your Harmony Pro supports a variety of devices such as lights, light switches, locks, thermostats, and blinds. Harmony Pro also connects to other home control platforms to access additional devices supported by these solutions.

The list of supported devices includes:



Nest Learning Thermostats, Honeywell Wi-Fi Thermostats



Philips hue Lights, Lutron Caséta Wireless Lights, Lifi



Lutron Serena Window Shades



SmartThings, PēQ

The list of Harmony-compatible devices is always growing. Visit [myharmony.com/compatibility](https://myharmony.com/compatibility) for the most up-to-date list of compatible brands, devices, and model numbers. Device compatibility is subject to change without notice.



Add a **Good Night** activity that turns off all your lights, lowers your blinds and thermostat, locks your doors!



Set the perfect **Dinner Party** mood with one touch—launch your favorite music video, set the lights to vibrant colors and turn up the heat.



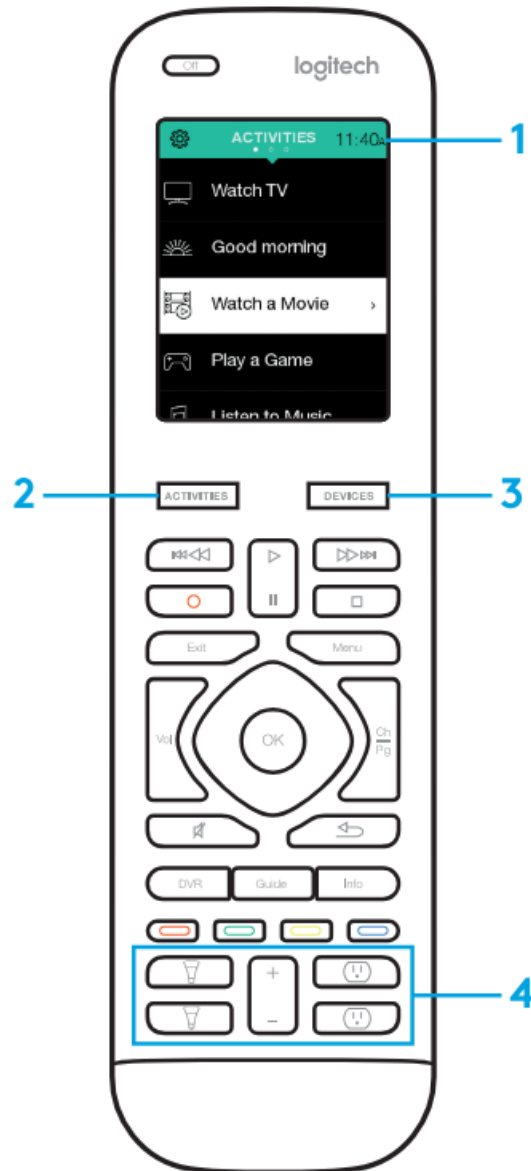
One touch dims the lights, turns on rejuvenating music at just the perfect volume and it's **Relax Time**.

### Get creative—Make it Home!

Add a Good Night activity that turns off all your lights, lowers your blinds and thermostats, and locks your doors!

Set the perfect Dinner Party mood with one touch—launch your favourite music video set the lights to vibrant colours and turn up the heat. One touch dims the lights and turns on rejuvenating music at just the perfect volume and it's Relax Time.

## How to use your remote



### 1. Clock/Battery

Tap to toggle between the clock and battery meter. By default, the clock will be displayed. If the battery drops below 20%, the battery of the meter will automatically be displayed.

### 2. Activities

Tap the Activities “soft button” to access the Activities Home Screen. You will see a list of all your Activities.

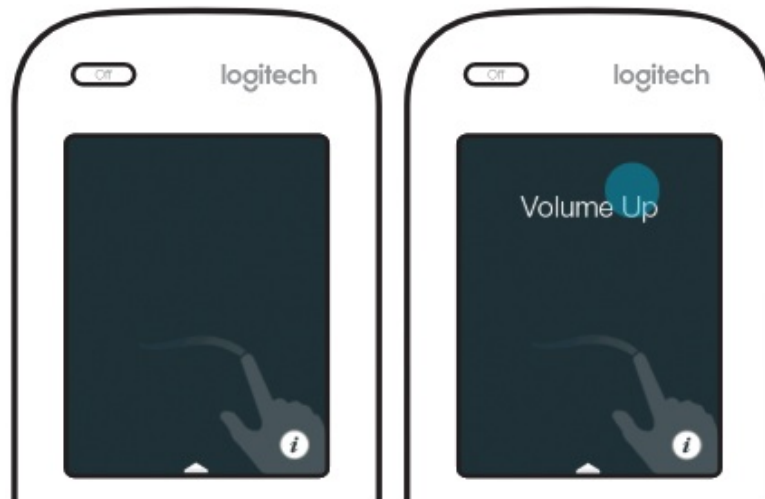
### 3. Devices

Tap the Devices “soft button” to access the Devices Home Screen. You will see a list of all your Home Entertainment and Home Control devices.

### 4. Button mapping

Harmony Pro includes a special button that can be used to control supported Home Control devices. For example, you can map a button to turn your hue lights on and off and use the +/- button to adjust the bulb's brightness.

## Gestures & Gesture Hints



When an Activity is running, swiping down from the top of any screen will display the gesture screen. Here, simple taps and swipes will perform functions related to the current Activity such as changing the volume, skipping forward or backward, pausing and playing, etc. Tap the button at the top to see what gestures are available for each Activity.

2016 Logitech. Logitech, Logi and other Logitech marks are owned by Logitech and may be registered. All other trademarks are the property of their respective owners. Logitech assumes no responsibility for any errors that may appear in this manual. Information contained herein is subject to change without notice.

**Download PDF:** [Logitech Harmony Pro Remote User Manual](#)

## References

- [User Manual](#)

[Manuals+](#), [Privacy Policy](#)

This website is an independent publication and is neither affiliated with nor endorsed by any of the trademark owners. The "Bluetooth®" word mark and logos are registered trademarks owned by Bluetooth SIG, Inc. The "Wi-Fi®" word mark and logos are registered trademarks owned by the Wi-Fi Alliance. Any use of these marks on this website does not imply any affiliation with or endorsement.