



Logitech H800 Wireless Headset Instruction Manual

[Home](#) » [Logitech](#) » Logitech H800 Wireless Headset Instruction Manual 

Contents

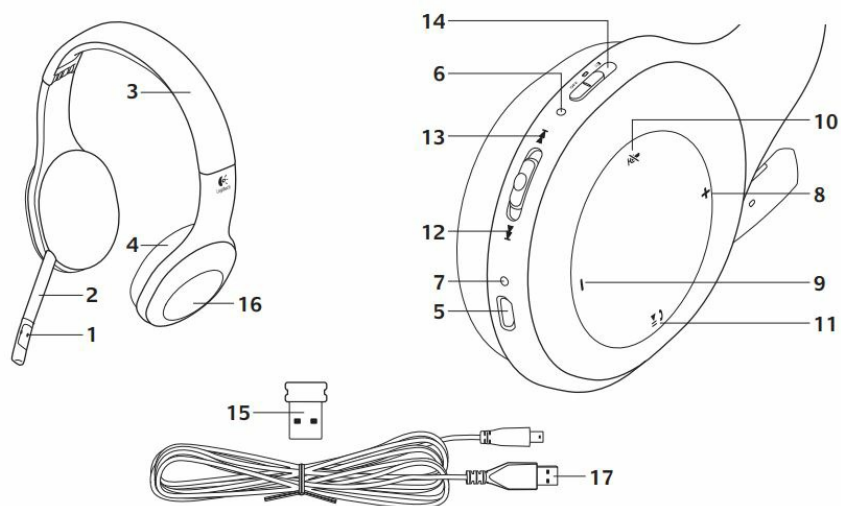
- [1 Logitech H800 Wireless Headset Instruction](#)
- [2 Features](#)
- [3 Connecting to a Bluetooth device](#)
- [4 Windows® XP](#)
- [5 Windows® Vista and Windows® 7](#)
- [6 Mac® OS](#)
- [7 Nano receiver and battery information](#)
- [8 Help with setup](#)
- [9 Wireless performance](#)
- [10 FREQUENTLY ASKED QUESTIONS](#)
- [11 VIDEO – OVERVIEW](#)



Logitech H800 Wireless Headset Instruction



Features

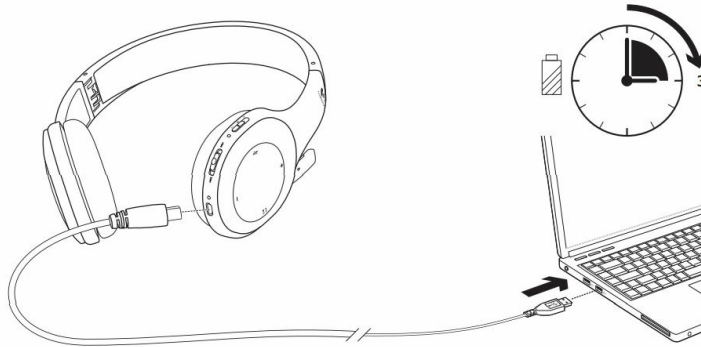


Headset elements

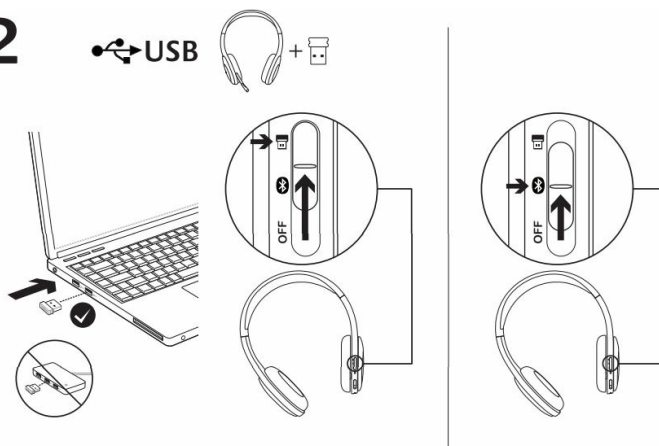
1. Noise-canceling microphone
2. Flexible, rotating microphone boom
3. Adjustable headband
4. Sculpted ear pads
5. Charging port
6. Wireless connection status light
7. Battery status light
8. Headset controls
9. Volume up
10. Volume down
11. Microphone mute
12. Play/pause or Answer call/end call

13. Next track/Fast Forward
14. Previous track/Rewind
15. Device selection switch
16. Other elements
17. USB wireless Nano receiver
18. Nano receiver storage
19. USB charging cable

1



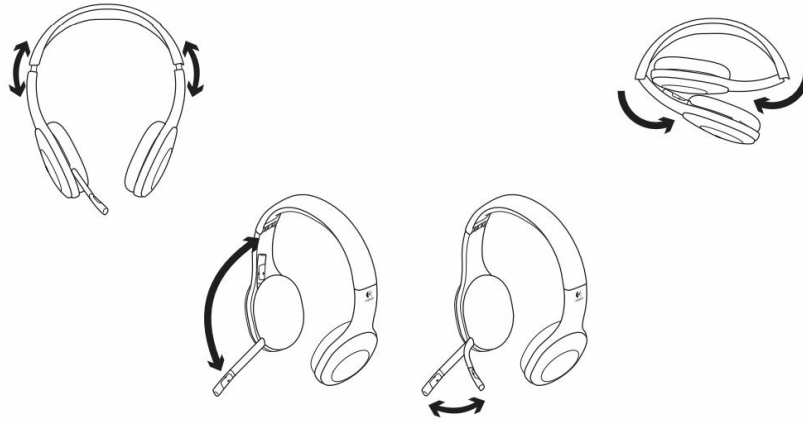
2



Connecting to a Bluetooth device

1. Power on the wireless headset.
2. Slide the Device Selection switch on the right ear cup to the Bluetooth (middle) position.
3. Activate pairing on your Bluetooth device. (Refer to the documentation that comes with your device for pairing instructions.) If your Bluetooth device requests a security code, PIN, or passcode, enter 0000. The Bluetooth connection is made.
4. To connect additional Bluetooth devices to the wireless headset, visit www.logitech.com/support, select your product, and find the FAQ about connecting multiple Bluetooth devices. You can pair up to seven Bluetooth devices with the headset, including smartphones, tablets, and MP3 players.

3



Try the headset

Listen to music or make an Internet call. If the headset doesn't work, you may need to specify the headset as the default audio output/input device for your operating system. Also, refer to Help with Setup for additional troubleshooting advice.

Windows® XP

1. Go to Start/Control Panel/Sounds and Audio Devices/Audio tab.
2. In the Sound Playback/Default Device window, choose the Logitech Wireless Headset H800.
3. Select the Voice tab.
4. In the Voice tab, choose the Logitech Wireless Headset H800.
5. Click OK.
6. Restart your media application.

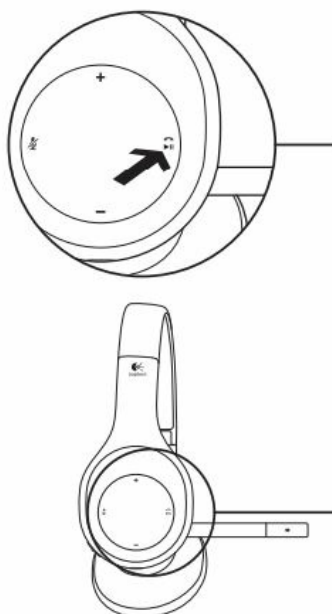
Windows® Vista and Windows® 7

1. Go to the Start/Control Panel/Sounds/ Playback Devices tab.
2. Choose Playback Devices.
3. Choose the Logitech Wireless Headset H800.
4. Click Set Default, and then click OK.
5. Select the Recording Tab.
6. Choose the Logitech Wireless Headset H800.
7. Click Set Default, and then click OK.
8. Restart your media application.

Mac® OS

1. Open System Preferences.
2. Choose the Sound/Output tab.
3. Choose the Logitech Wireless Headset H800.
4. Select the Input tab.
5. Choose the Logitech Wireless Headset H800.
6. Close window.

7. Restart your media application.



Answering a call

To answer a call with a smartphone, press the Play/Pause (phone icon) button on the right ear cup. To end a call, press and hold for three seconds the Play/Pause button.

Nano receiver and battery information

Wireless connection status light

Solid green	Connection made; your headset is ready to use.
Flashing green	Your headset and Nano receiver are not connected.
No light	Your headset is powered off.

Battery status

Light	Battery Level	Description
Red and beeping	<10%	<30 minutes of talk time left
Flashing amber		Headset charging
Steady amber	100%	Charging complete

Note: To charge the headset, plug the included USB charging cable into your headset and computer. When the headset battery is very low, a full charge can take up to three hours. But you don't have to stop using the headset because it charges while you talk or listen to music.

Help with setup

Does something not sound right? No sound at all? Microphone not working?

- Try moving the headset closer to the Nano receiver. The wireless connection status light on the headset turns solid green when the headset is in range (up to 40ft/12 m) with the Nano receiver. See the wireless performance table below for Nano receiver placement tips.
- When using with the Nano receiver, the Device Selection switch on the headset should be set to the last position.
- Make sure the headset is the active input/output audio device in both your application and operating system. For more information, see Test the Headset.
- Adjust the volume and microphone settings to an audible level in both your application and operating system.
- Quit and restart your media application.
- If you're using a USB hub (powered or un-powered), try plugging the Nano receiver directly into your computer.
- Try using the headset with another computer.

Headset not charging?

- Use the provided USB charging cable. Connect the cable to the charging port on the headset, and connect the other end of the cable to a USB port on your computer.
- If you are using a USB hub, connect the charging cable directly to a USB port on your computer. If the battery status light on the headset is not amber (solid or flashing), the headset is not receiving power from your computer's USB port. Try another USB port on your computer, and then turn on or wake up your computer to charge the headset.

Are music controls not working?

- Music controls for applications other than iTunes® and Windows Media Player® are not supported.
- If you use Windows®, you can download an optional software enhancement from www.logitech.com/support to improve music control.
- Some functions of the headset may not be supported depending on the tablet, smartphone, and/or application.

Is Bluetooth not connecting?

- Set the device selection switch on the headset to the Bluetooth (middle) position.
- Do not use the Nano receiver for a Bluetooth connection.
- Try powering off the headset, and then power it back on by sliding the Device Selection switch to the Bluetooth position.
- Re-establish pairing between the headset and your Bluetooth device. Initiate pairing for the headset by pressing and holding for five seconds the Volume + and Next track/ Fast forward buttons on the headset. Next, initiate pairing for your Bluetooth device. (Consult the documentation that comes with your Bluetooth device.)
- Try using the headset with a different Bluetooth device.
- If you have paired more than one Bluetooth device to the wireless headset and are having trouble using any of these devices with the headset, visit www.logitech.com/support, select your product, and find the FAQ about connecting multiple Bluetooth devices.

Wireless performance

Not recommended	Recommended
Back of desktop tower	Front of desktop tower
Plugged into monitor or keyboard USB port	Directly plugged into the PC
USB hub (powered or non-powered)	Directly plugged into the PC
Right next to other receivers (laptop)	Away from other receivers (laptop)
Within three feet of wireless router	More than three feet away from a wireless router

For additional assistance, please visit www.logitech.com/support.

www.logitech.com

2011 Logitech. All rights reserved. Logitech, the Logitech logo, and other Logitech marks are owned by Logitech and may be registered. Microsoft, Windows, Windows Media Player, and the Windows logo are trademarks of the Microsoft group of companies. Mac, the Mac logo, and iTunes are trademarks of Apple Inc., registered in the U.S. and other countries. The Bluetooth word and logo are registered trademarks and are owned by Bluetooth SIG, Inc. All other trademarks are the property of their respective owners. Logitech assumes no responsibility for any errors that may appear in this manual. Information contained herein is subject to change without notice.

www.logitech.com/support

- **United States** +1 646-454-3200
- **Argentina** +00800-555-3284
- **Canada** +1 866-934-5644
- **Brasil** +0 800-891-4173
- **Chile** 1230 020 5484
- **Latin America** +1 800-578-9619
- **Mexico** 001 800 578 9619

What do you think?

Please take a minute to tell us. Thank you for purchasing our product.

www.logitech.com/ithink

FREQUENTLY ASKED QUESTIONS

What is the Logitech H800 Wireless Headset?

The Logitech H800 is a wireless headset designed for audio communication and multimedia purposes.

What is the wireless range of the Logitech H800?

The Logitech H800 offers a wireless range of up to 12 meters (40 feet) from the connected device.

What is the connection type of the Logitech H800?

The Logitech H800 can be connected wirelessly via Bluetooth or using the included USB nano receiver.

Does the Logitech H800 work with both PCs and Macs?

Yes, the Logitech H800 is compatible with both PCs and Macs.

Can I use the Logitech H800 with mobile devices?

Yes, the Logitech H800 can be used with compatible mobile devices that support Bluetooth connectivity.

What is the battery life of the Logitech H800?

The Logitech H800 offers a battery life of approximately 6 hours of continuous usage.

Does the Logitech H800 have a built-in microphone?

Yes, the Logitech H800 features a built-in noise-canceling microphone for clear voice communication.

Can I fold the Logitech H800 for easy storage and portability?

Yes, the Logitech H800 is foldable, allowing for convenient storage and portability.

Does the Logitech H800 have on-ear controls?

Yes, the Logitech H800 has on-ear controls for adjusting volume, answering calls, and managing media playback.

Can I use the Logitech H800 for voice chats and video calls?

Yes, the Logitech H800 is suitable for voice chats and video calls, thanks to its microphone and audio capabilities.

Does the Logitech H800 support virtual meetings and conference calls?

Yes, the Logitech H800 can be used for virtual meetings and conference calls, providing audio input and output for communication.

Does the Logitech H800 support surround sound?

Yes, the Logitech H800 is equipped with support for virtual surround sound, enhancing the audio experience during multimedia playback.

Does the Logitech H800 have a rechargeable battery?

Yes, the Logitech H800 has a built-in rechargeable battery that can be charged via the included USB cable.

Can I use the Logitech H800 with gaming consoles?

The Logitech H800 is primarily designed for PC and mobile device usage, so compatibility with gaming consoles may vary. It's recommended to check the headset's compatibility with specific gaming consoles before use.

Does the Logitech H800 come with a warranty?

Yes, the Logitech H800 typically comes with a limited warranty, which may vary depending on the region and retailer. It's advisable to check the warranty details at the time of purchase.

VIDEO – OVERVIEW



[Download the PDF link: Logitech H800 Wireless Headset Instruction Manual](#)

[Manuals+.](#)