

Logitech G602 Wireless Gaming Mouse



Logitech G602 Wireless Gaming Mouse Setup Guide

[Home](#) » [Logitech](#) » Logitech G602 Wireless Gaming Mouse Setup Guide 

Contents

- [1 Logitech G602 Wireless Gaming Mouse](#)
- [2 What's in the box](#)
- [3 Quick Setup](#)
- [4 User Support](#)
- [5 Features \(default\)](#)
- [6 Troubleshooting](#)
- [7 For Contact](#)
- [8 Specifications](#)
 - [8.1 Part Number](#)
 - [8.2 Warranty Information](#)
 - [8.3 Package contents](#)
 - [8.4 Technical Specifications](#)
- [9 Limited Hardware Warranty](#)
 - [9.1 Warranty Periods](#)
- [10 FAQs](#)
- [11 Related Posts](#)



Logitech G602 Wireless Gaming Mouse



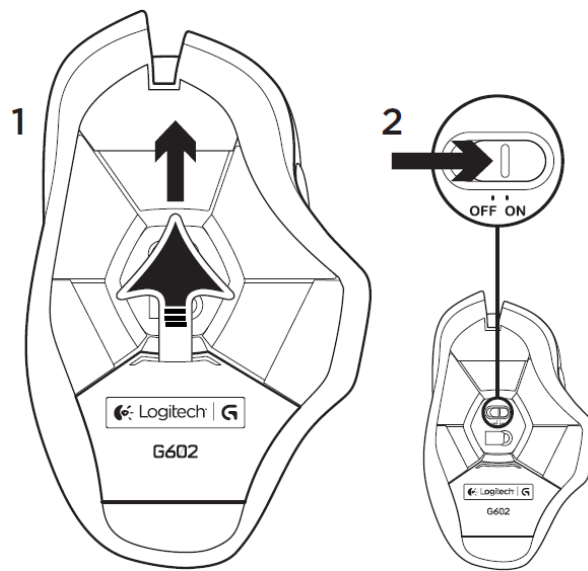
What's in the box

1. USB cable
2. A small USB device
3. Logitech G602 Wireless Gaming Mouse Setup Guide



Quick Setup

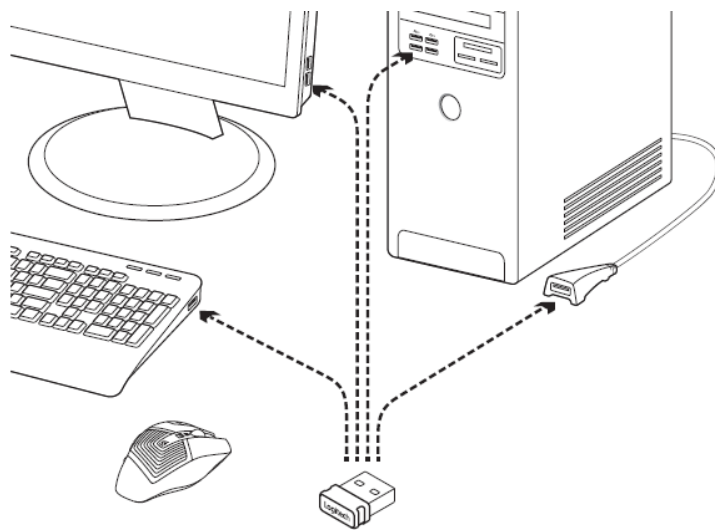
1. **Top View of Mouse:** This shows the top view of the mouse with an arrow indicating a compartment on the top that can be opened or adjusted.
2. **Bottom View of Mouse:** This reveals the bottom view of the mouse with another arrow pointing to the ON/OFF switch of the mouse. This is where users can turn the mouse on or off.



Plug in the gaming receiver

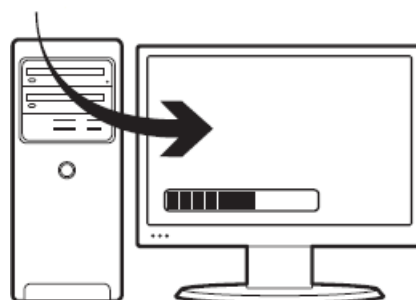
1. To optimize the wireless connection, plug the receiver into a computer USB port close to the G602.

Note: Some hubs can degrade wireless performance. If this happens, use the USB port on your computer with the most direct path to the G602.



User Support

www.logitech.com/downloads

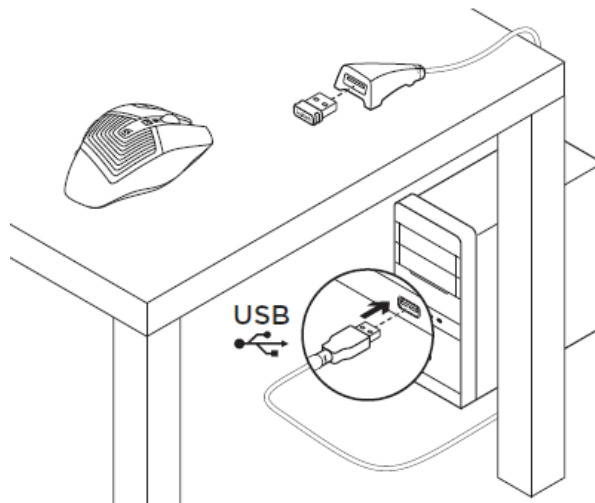


Customizing your mouse

Create profiles and macros for your G602 with the Logitech Gaming Software. Download the latest release from www.logitech.com/downloads.

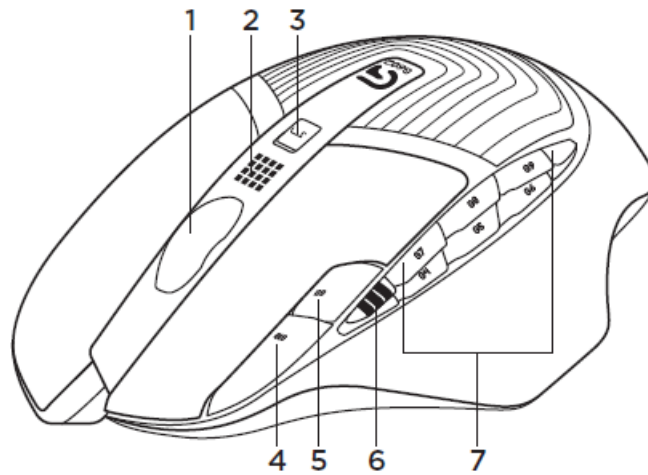
Using the extension cable

You can also plug the receiver extension cable into your computer in order to place the receiver close to your G602.



Features (default)

1. Wheel
2. Battery/mode indicator
3. **Performance/Endurance mode switch:**
 - Blue light for performance mode
 - Green light for endurance mode
4. G10=DPI+
5. G11=DPI-
6. DPI display
7. **Programmable keys (in default)**
 - G4=Forward
 - G5=Backward
 - G6=Battery level check
 - G7=1
 - G8=2
 - G9=3



Troubleshooting

No pointer movement?

- Make sure the power switch is in the ON position.
- Verify that the batteries still have available power and that they are inserted in the proper direction.
- Restart your computer.
- Should you need to pair your G602 to the gaming receiver, download the Logitech Connect Utility from www.logitech.com/downloads.

Erratic pointer movement or missed button clicks?

- Remove metallic objects between the G602 and the gaming receiver.
- If the receiver is plugged into a USB hub, try plugging it directly into the computer instead.
- Move the receiver closer to the G602 by using the included receiver extension cable.
- Try tracking on a different surface. Highly-reflective or transparent surfaces, like glass, do not deliver good tracking results.

For Contact

www.logitech.com/support/g602



United States: +1 646-454-3200



Argentina +00800-555-3284



Brazil +0 800-891-4173



Canada +1 866-934-5644



Chile 1230 020 5484



Colombia 01-800-913-6668



Latin America +1 800-578-9619



Mexico 01.800.800.4500



United States +1 646-454-3200

What do you think?

Please take a minute to tell us. Thank you for purchasing our product. www.logitech.com/ithink

Specifications

Part Number

- **Black:** 910-003820

Warranty Information

- 3-year Limited hardware warranty

System Requirements

- Windows® 8, Windows 7, or Windows Vista®
- Mac OS® X 10.6.8 or higher

Powered USB port

- Internet connection and 100MB hard drive space (for optional software download)

Platform Compatibility

- Windows® 8, Windows 7, or Windows Vista®
- Mac OS® 10.6.8 or higher

Package contents

- Mouse
- Wireless receiver
- Receiver extender cable

- 2 AA batteries, pre-installed
- User documentation

Technical Specifications

Tracking

- **Resolution:** 250 – 2,500 dpi
- **Max. acceleration:** >20G
- **Max. speed:** up to 6.6 ft/second (2 meters/second) (80ips)
- Some profile settings require Logitech Gaming Software, available at www.logitech.com/downloads.

Responsiveness

- **USB data format:** 16 bits/axis
- **USB report rate:** Up to 500 reports/second

Glide

- **Dynamic coefficient of friction – Mu (k):** .09*
- **Static coefficient of friction – Mu (s):** .14*
- Tested on wood-veneer desktop.

Durability

- **Buttons (Left / Right):** 20 million clicks
- **PTFE Feet:** 250 kilometers

Battery Life and Wireless

- **Performance mode:** up to 250 hours*
- **Endurance mode:** up to 1440 hours*
- **Wireless range:** 9.8 Ft. (3 meters)**
- Battery life may vary based on user and computing conditions.
- The actual wireless range will vary with use, settings, and environmental conditions.

Limited Hardware Warranty

Logitech warrants to the original purchaser that your Logitech hardware product shall be free from defects in material and workmanship for the length of time, identified on your product package and/or at www.logitech.com under specifications for your product, from the date of purchase (or delivery as may be required in certain jurisdictions). You may also find this information by selecting your product in the Online Support section of our website at www.logitech.com/support. Except where prohibited by applicable law, this warranty is nontransferable and is limited to the original purchaser and the country in which the product was purchased. This warranty gives you specific legal rights, and you may also have other rights, including a longer warranty duration that may vary under local laws.

How to Start

The first thing to do if you think you may have a warranty claim is to visit <http://www.logitech.com/support> where you will find a wide range of Support and FAQ pages with valuable technical assistance. If you do not find a solution on our website, please contact the retailer from whom you made your purchase. Valid warranty claims are generally processed through the point-of-purchase retailer during the first thirty (30) days after purchase. This period of time may vary depending on the retailer. If your warranty claim cannot be processed through the point-of-purchase retailer, please visit our Support Warranty FAQ section to find out how to contact our Support department.

Remedies

Logitech's entire liability and your exclusive remedy for any breach of warranty shall be, at Logitech's option, (1) to repair or replace the hardware, or (2) to refund the price paid, provided that the hardware is returned to the point of purchase or such other place as Logitech may direct with a copy of the sales receipt or dated itemized receipt. Shipping and handling charges may apply except where prohibited by applicable law. Logitech may, at its option, replace your product, offer to provide a functionally equivalent product, or repair any product with new, refurbished, or used parts as long as such parts are in compliance with the product's technical specifications. Any replacement hardware product will be warranted for the remainder of the original warranty period or thirty (30) days, whichever is longer, or for any additional period of time that may be applicable in your jurisdiction. This warranty does not cover problems or damage resulting from (1) accident, abuse, misapplication, or any unauthorized repair, modification or disassembly; (2) improper operation or maintenance, usage not in accordance with product instructions or connection to improper voltage supply; (3) use of consumables, such as replacement batteries, not supplied by Logitech except where such restriction is prohibited by applicable law; (4) lost parts that were originally supplied with the Logitech hardware product; (5) non-Logitech branded parts and accessories even if sold with the Logitech hardware product; (6) non-Logitech services that may be accessed or controlled with a Logitech hardware product; or (7) normal wear and tear. This limited warranty does not, under any circumstances, cover the replacement of or reimbursement for any electronic device or personal property that is not a Logitech product. This warranty also does not cover Logitech products used by businesses for the purpose of providing end users with Internet access for a fee.

Limitation of Liability

LOGITECH SHALL NOT BE LIABLE FOR ANY SPECIAL, INDIRECT, INCIDENTAL OR CONSEQUENTIAL DAMAGES WHATSOEVER, INCLUDING BUT NOT LIMITED TO LOSS OF PROFITS, REVENUE OR DATA (WHETHER DIRECT OR INDIRECT) OR COMMERCIAL LOSS FOR BREACH OF ANY EXPRESS OR IMPLIED WARRANTY ON YOUR PRODUCT EVEN IF LOGITECH HAS BEEN ADVISED OF THE POSSIBILITY OF SUCH DAMAGES.

Some jurisdictions do not allow the exclusion or limitation of special, indirect, incidental, or consequential damages, so the above limitation or exclusion may not apply to you.

Duration of Implied Warranties

EXCEPT TO THE EXTENT PROHIBITED BY APPLICABLE LAW, ANY IMPLIED WARRANTY OF MERCHANTABILITY OR FITNESS FOR A PARTICULAR PURPOSE ON THIS HARDWARE PRODUCT IS LIMITED TO THE DURATION OF THE APPLICABLE EXPRESS WARRANTY PERIOD FOR YOUR PRODUCT.

Some jurisdictions do not allow limitations on the duration of an implied warranty, so the above limitation may not apply to you.

National Statutory Rights

Consumers have legal rights under applicable national legislation governing the sale of consumer goods. Such

rights are not affected by the warranties in this Limited Warranty. In Brazil, remedies include the consumer's option to keep the defective product and receive a proportional price reduction.

No Other Warranties

No Logitech dealer, agent, or employee is authorized to make any modification, extension, or addition to this warranty.

Warranty Periods

Please note that, in the European Union, any warranty period less than two years shall be increased to two years. Logitech Address Logitech, Inc. 7600 Gateway Blvd. Newark, California 94560 Manufacturers' warranties may not apply in all cases, depending on factors such as use of the product, where the product was purchased, or who you purchased the product from. Please review the warranty carefully, and contact the manufacturer if you have any questions.

© 2013 Logitech. All rights reserved. Logitech, the Logitech logo, and other Logitech marks are owned by Logitech and may be registered. All other trademarks are the property of their respective owners. Logitech assumes no responsibility for any errors that may appear in this manual. Information contained herein is subject to change without notice.

FAQs

What is included in the box with the Logitech G602 Wireless Gaming Mouse?

The box includes a USB cable, a small USB device, and the Logitech G602 Wireless Gaming Mouse Setup Guide.

How do I set up the Logitech G602 Wireless Gaming Mouse?

Plug the gaming receiver into a computer USB port close to the G602. Make sure to turn on the power switch of the mouse. For more detailed instructions, refer to the Logitech G602 Wireless Gaming Mouse Setup Guide.

How can I optimize the wireless connection of the G602?

To optimize the wireless connection, plug the receiver into a computer USB port close to the G602. Avoid using USB hubs as they can degrade wireless performance.

How can I customize my G602 mouse?

You can create profiles and macros for your G602 using the Logitech Gaming Software. Download the latest release from www.logitech.com/downloads.

What are the default features of the G602 mouse?

The default features include a wheel, a battery/mode indicator, a performance/endurance mode switch, DPI adjustment buttons, programmable keys, and a DPI display.

My G602 mouse is not moving the pointer. What should I do?

Make sure the power switch is in the ON position and check that the batteries are inserted correctly. Restart your computer if necessary. If you need to pair your G602 to the gaming receiver, download the Logitech Connect Utility from www.logitech.com/downloads.

The pointer movement of my G602 mouse is erratic or button clicks are being missed. What can I do?

Remove metallic objects between the G602 and the gaming receiver. If the receiver is plugged into a USB hub, try plugging it directly into the computer. Use the included receiver extension cable to move the receiver closer to the G602. Also, try using the mouse on a different surface as highly-reflective or transparent surfaces may affect tracking.

What is the warranty information for the Logitech G602 Wireless Gaming Mouse?

The G602 mouse comes with a 3-year limited hardware warranty. For more information, refer to the warranty section in the Logitech G602 Wireless Gaming Mouse Setup Guide.

Download this PDF Link: [Logitech G602 Wireless Gaming Mouse Setup Guide](#)
