

Logitech G502 X PLUS Wireless RGB Gaming Mouse



Logitech G502 X PLUS Wireless RGB Gaming Mouse User Manual

[Home](#) » [Logitech](#) » Logitech G502 X PLUS Wireless RGB Gaming Mouse User Manual 

Contents

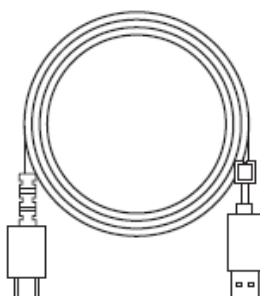
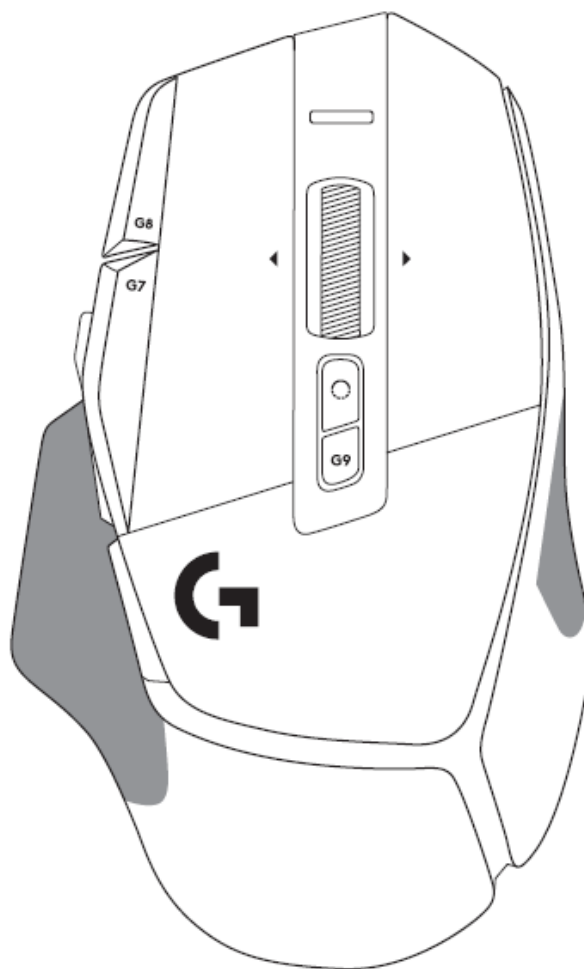
- [1 Logitech G502 X PLUS Wireless RGB Gaming Mouse User Manual](#)
- [2 What's In Box](#)
- [3 SETUP INSTRUCTIONS](#)
- [4 MOUSE FEATURES](#)
- [5 SETTINGS](#)
- [6 BATTERY LIFE](#)
- [7 References](#)
- [8 Related Posts](#)



Logitech G502 X PLUS Wireless RGB Gaming Mouse User Manual

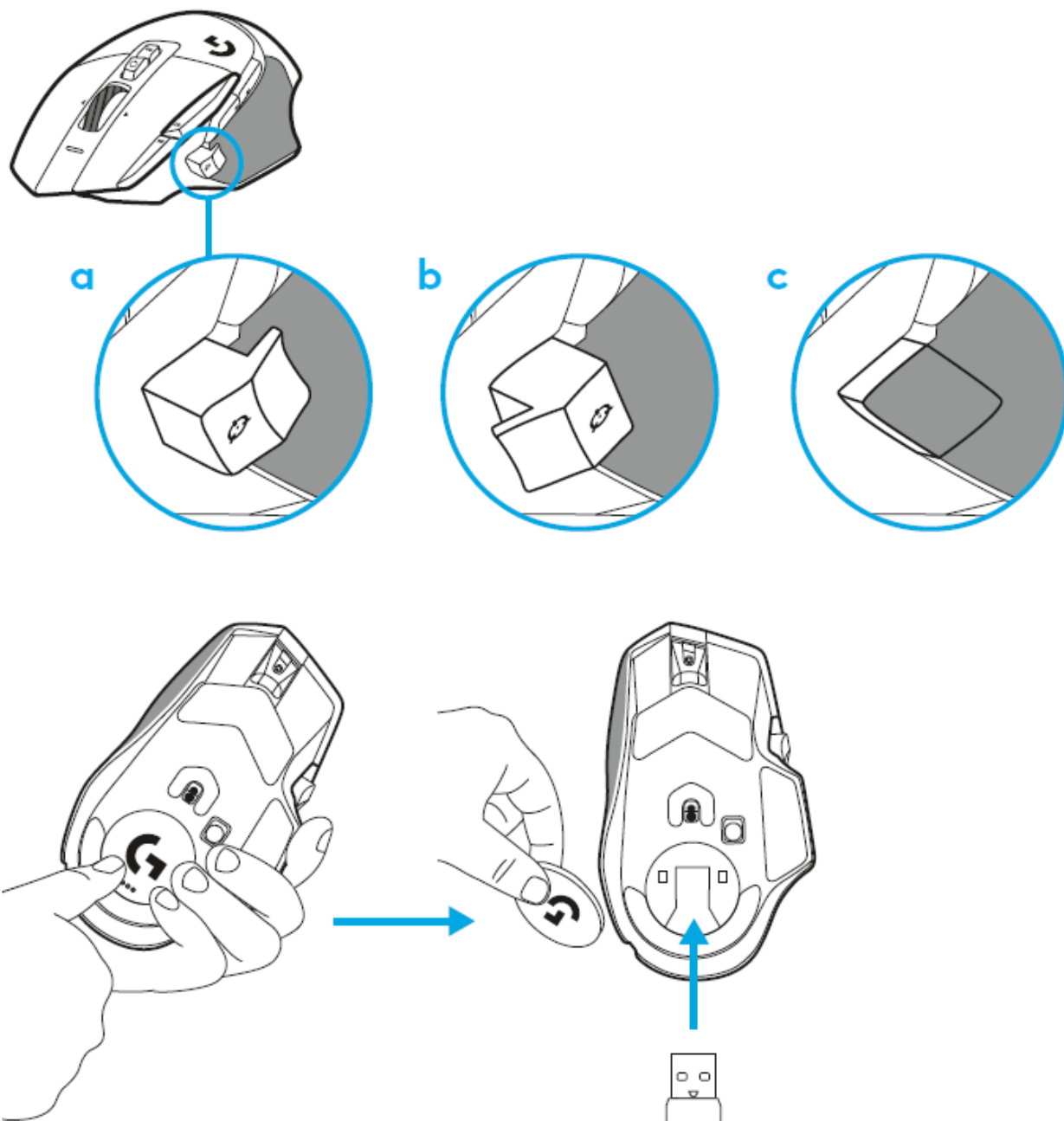


What's In Box

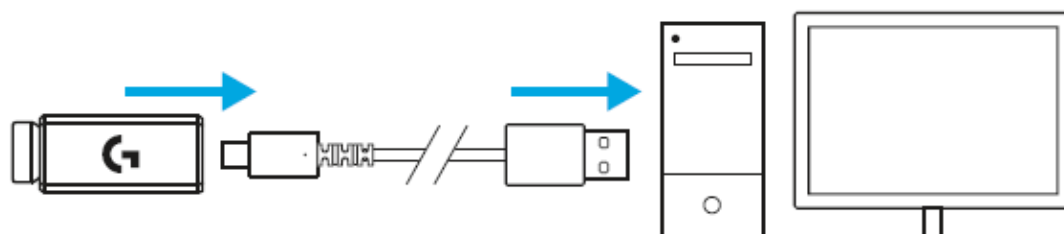


SETUP INSTRUCTIONS

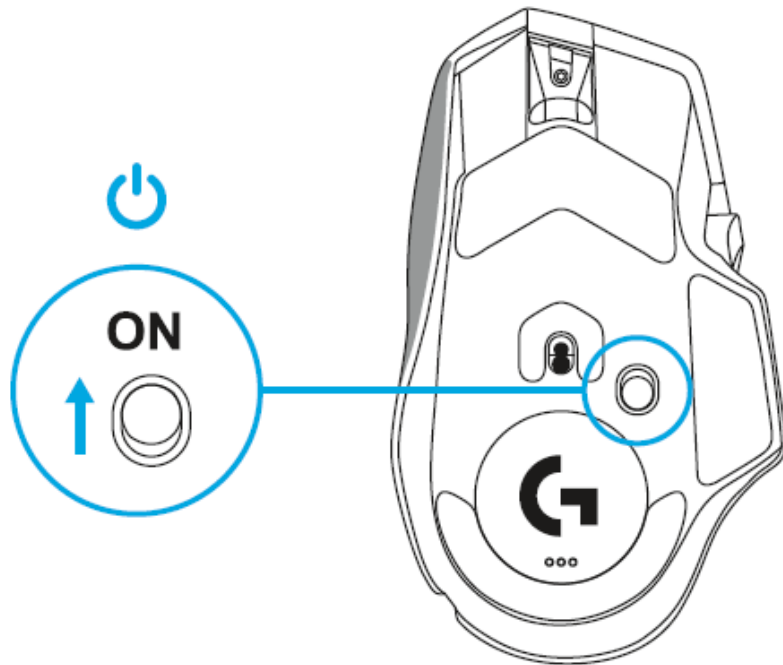
1. Orientate the DPI Shift to fit your preference or replace it with the button, cover to extend the grip surface.



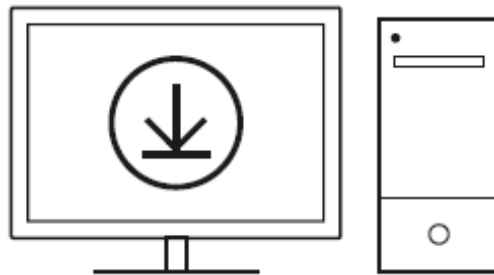
2. The receiver can be stored in the mouse behind the door when on the go.
3. The LIGHTSPEED Wireless USB-A receiver is below the mouse in the product tray.



4. Plug the USB-A cable connector into your PC and the USB-C connector into the receiver extension adapter. Plug the USB-A receiver into the adapter.

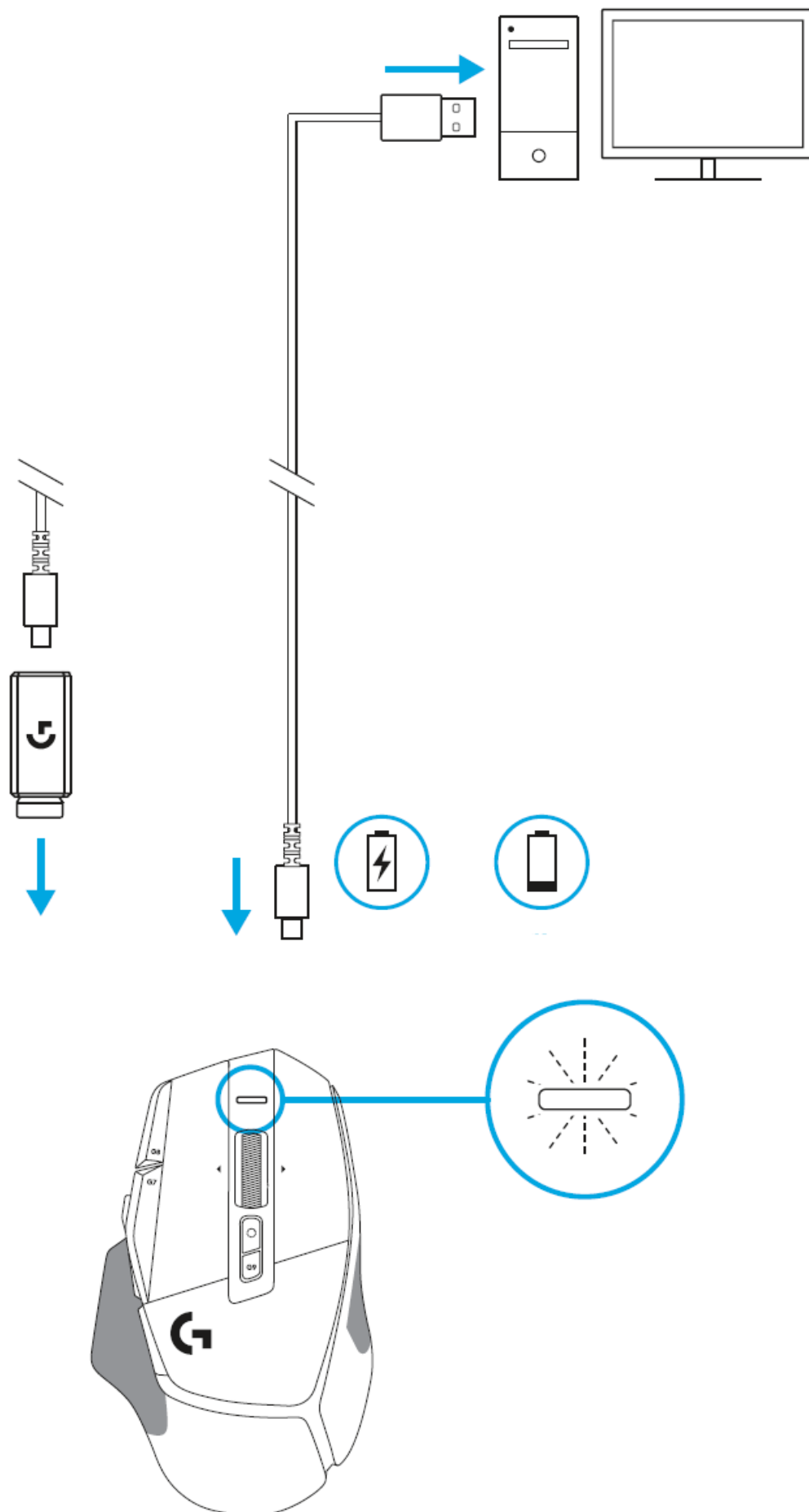


5. The LIGHTSPEED Wireless receiver can also be plugged directly into your PC, but using the cable and extension adapter will ensure a better connection and easy access to the cable when you need to charge your mouse.



logitechG.com/ghub

6. Slide the power button up to turn on your mouse.

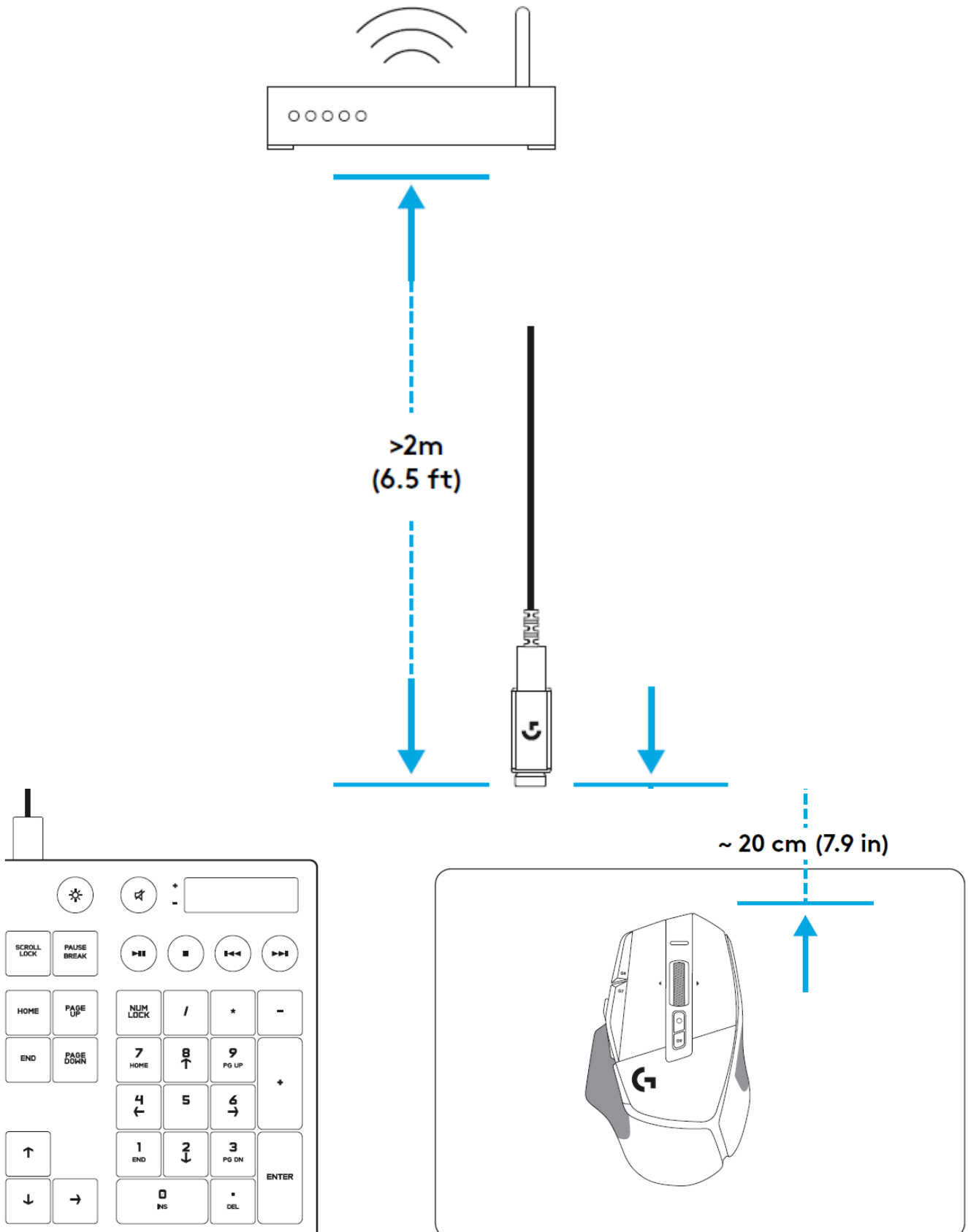


7. Download Logitech G HUB gaming software to personalize your G502 X mouse. Fine-tune to suit your playstyle, personality and each of your games, assign commands to any of the 13 controls, and more.
8. To charge your mouse, disconnect the cable from the adapter and plug it into the USB-C port located at the front of the mouse.

9. Your mouse will operate in data-over-cable mode whenever it is plugged in directly to a PC. Charging from 0% to 100% takes around 2 hours when plugged into a USB port.
10. Compatible with Powerplay wireless charging system.

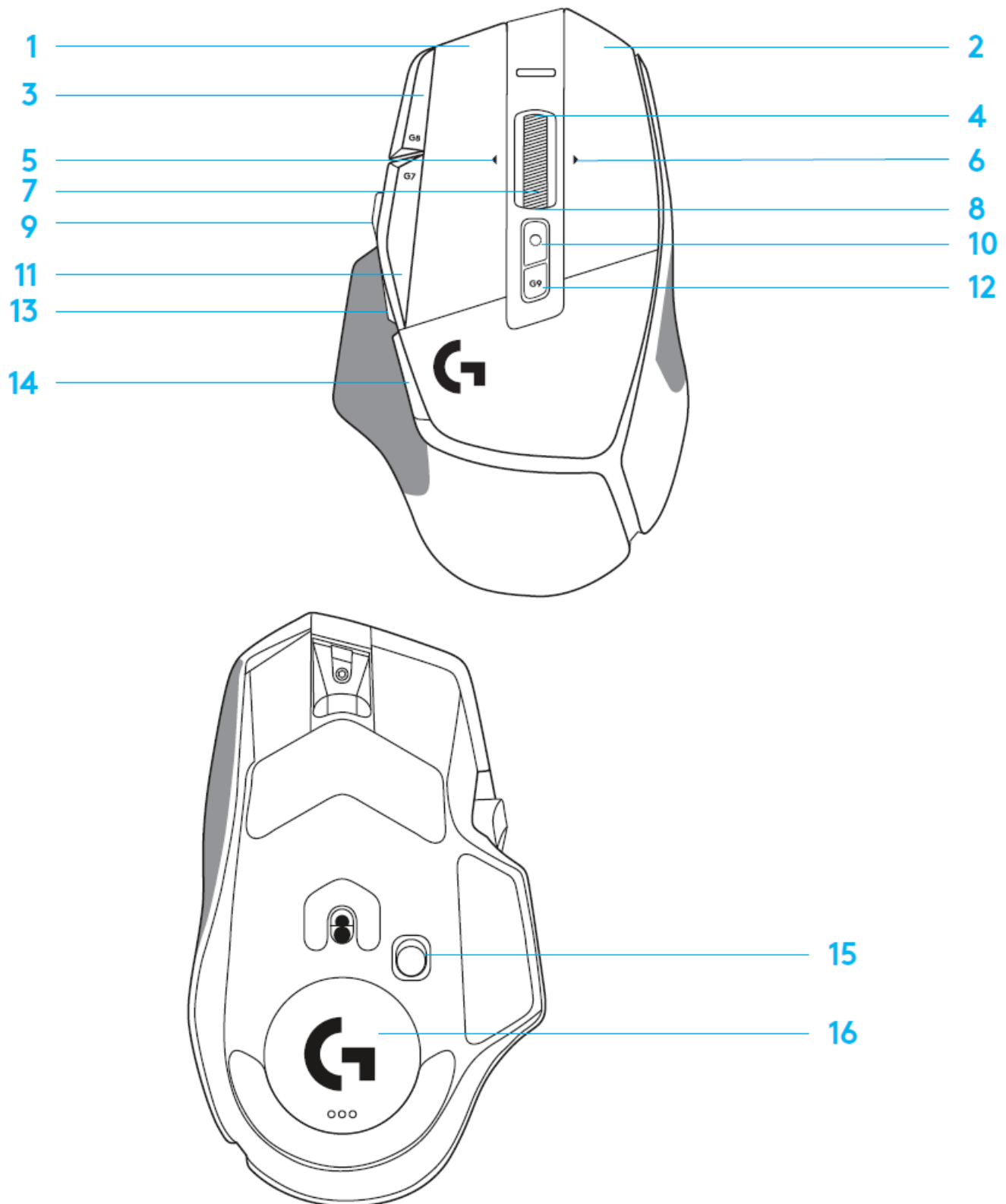
Tips

- Keep the mouse and receiver at least 2 meters away from wireless routers or other 2.4 GHz wireless devices to minimize environmental noise.



- G502 X PLUS and G502 X LIGHTSPEED have a wireless range of up to 10 meters.
- To ensure optimal performance in noisy wireless environments, and to keep the charging cable easily accessible, it is recommended to keep the receiver within 20 cm of the mouse.

MOUSE FEATURES



1. Left click (Button G1)
2. Right-click (Button G2)
3. DPI up (Button G8)

4. Scroll up
5. Scroll left (Wheel tilt left)
6. Scroll right (Wheel tilt right)
7. Middle click (Button G3)
8. Scroll down
9. DPI Shift (Button G6)
10. Wheel mode toggle button (not programmable)
11. DPI down (Button G7)
12. Profile cycling (Button G9)
13. Forward (Button G5)
14. Back (Button G4)
15. On / Off switch (bottom of the mouse, not programmable)
16. POWERPLAY™ Aperture door wireless receiver storage

ONBOARD PROFILES BY DEFAULT

Up to 5 Onboard memory profiles can be unlocked and customized in G HUB.

SETTINGS

SETTINGS
Report Rate
DPI
DPI steps colours
Default DPI
G6 button
PROGRAMMABLE CONTROLS
Left Main Button
Right Main Button
Middle Wheel Button
G4 Button
G5 Button
G7 Button
G8 Button
G9 Button
Scroll right (wheel tilt right)
Scroll left (wheel tilt left)
Wheel Scroll Up
Wheel Scroll Down

MAIN PROFILE GAMING
1 ms
800, 1200, 1600, 2400, 3200
1: White 2: Orange 3: Teal 4: Yellow 5: Magenta
1600
DPI Shift to 800
<i>Left click – system/application</i>
<i>Right click – system/application</i>
<i>Wheel click/press – system/application</i>
<i>Side button – system/application (commonly used backwards)</i>
<i>Side button – system/application (commonly used backwards)</i>
DPI Down
DPI Up
Profile cycle
Tilt Right- system/application
Tilt left- system/application
Scroll Up – system/application
Scroll Down – system/application

SECONDARY PROFILE PRODUCTIVITY	SECONDARY PROFILE G-SHIFTED (G-SHIFT on DPI Shift button)
2 ms	no changes
800, 1200, 1600, 2400, 3200	no changes
1: White 2: Orange 3: Teal 4: Yellow 5: Magenta	
1600	no changes
G-Shift (see right column)	no changes
<i>Left click – system/application</i>	no changes
<i>Right click – system/application</i>	no changes
<i>Wheel click/press – system/application</i>	Ctrl-T – opening a new tab in the browser
<i>Side button – system/application (commonly used backwards)</i>	no changes
<i>Side button – system/application (commonly used backwards)</i>	no changes
DPI Down	Ctrl-X
DPI Up	Ctrl-Z
Profile cycle	Ctrl-0
Tilt Right- system/application	Ctrl-Tab
Tilt left- system/application	Ctrl-Xhft-Tab
Scroll Up – system/application	Volume Up
Scroll Down – system/application	Volume Down

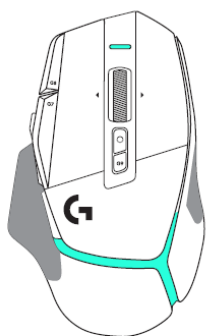
SECONDARY PROFILE G-SHIFTED (G-SHIFT on DPI Shift button)



DPI 1 / Profile 1



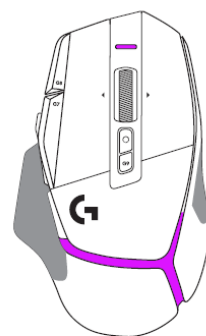
DPI 2 / Profile 2



DPI 3 / Profile 3



DPI 4 / Profile 4



DPI 5 / Profile 5

PROGRAMMABLE CONTROLS

PROFILE, DPI SELECTION AND DPI SHIFT

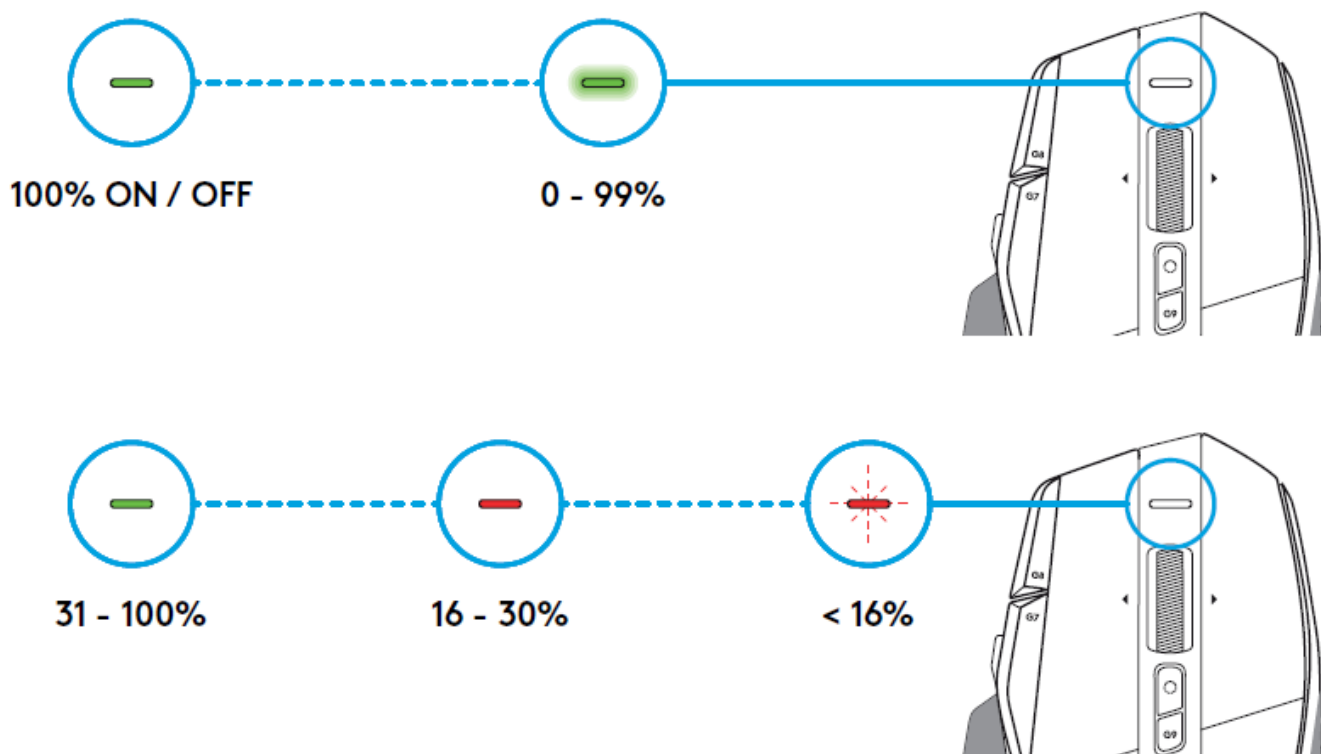
When the DPI Shift button is pressed: the mouse displays the color associated with the DPI shift speed, when released the mouse displays the DPI setting colour that was used before this action. DPI and profile selection are communicated using lighting on the top and the rear of the mouse. DPI change is expressed by different steady colours, while profile change is displayed by different blinking colours. DPI 1 / Profile 1 DPI 2 / Profile 2 DPI 3 / Profile 3 DPI 4 / Profile 4 DPI 5 / Profile 5

FREQUENTLY ASKED QUESTIONS

www.logitechG.com/support/G502X-PLUS

BATTERY LIFE

G502 X PLUS and G502 X LIGHTSPEED have a rechargeable 500 mAh LiPol battery which provides up to 140 h of continuous motion for G502 X and up to 120 h for G502 X PLUS.



Charging Status

When the charging cable is plugged into the device:

- Steady green = charge completed (100%) when the device is ON or OFF
- Breathing green = charging (0 – 99%)

Battery level

When turning the device ON:

- Steady green = good (31% – 100%)
- Steady red = low (16 – 30%)
- Slow blink red = critical (< 16%)

Tips

- Charge level, power draw, and estimated remaining battery life can be checked in Logitech G HUB.
- Battery life and capacity may vary with age and use. Rechargeable batteries have a limited number of charge cycles.

2022 Logitech. Logitech, Logitech G, Logi and their respective logos are trademarks or registered trademarks of Logitech Europe S.A. and/or its affiliates in the U.S. and other countries. All other trademarks are the property of their respective owners. Logitech assumes no responsibility for any errors that may appear in this manual. Information contained herein is subject to change without notice.

Download PDF: [Logitech G502 X PLUS Wireless RGB Gaming Mouse User Manual](#)

References

- [User Manual](#)

Manuals+. Privacy Policy

This website is an independent publication and is neither affiliated with nor endorsed by any of the trademark owners. The "Bluetooth®" word mark and logos are registered trademarks owned by Bluetooth SIG, Inc. The "Wi-Fi®" word mark and logos are registered trademarks owned by the Wi-Fi Alliance. Any use of these marks on this website does not imply any affiliation with or endorsement.