



Logitech G502 Proteus Spectrum RGB Gaming Mouse User Guide

[Home](#) » [Logitech](#) » Logitech G502 Proteus Spectrum RGB Gaming Mouse User Guide 

Contents

- [1 Logitech G502 Proteus Spectrum RGB Gaming Mouse](#)
- [2 SPECIFICATION](#)
- [3 PRODUCT DESCRIPTION](#)
- [4 11 Fully Programmable Buttons](#)
- [5 ONBOARD PROFILES](#)
- [6 DPI INDICATORS](#)
- [7 HYPERFAST SCROLL WHEEL](#)
- [8 IF THE MOUSE DOESN'T WORK](#)
- [9 FAQs](#)
- [10 Video](#)
- [11 Related Posts](#)



Logitech G502 Proteus Spectrum RGB Gaming Mouse



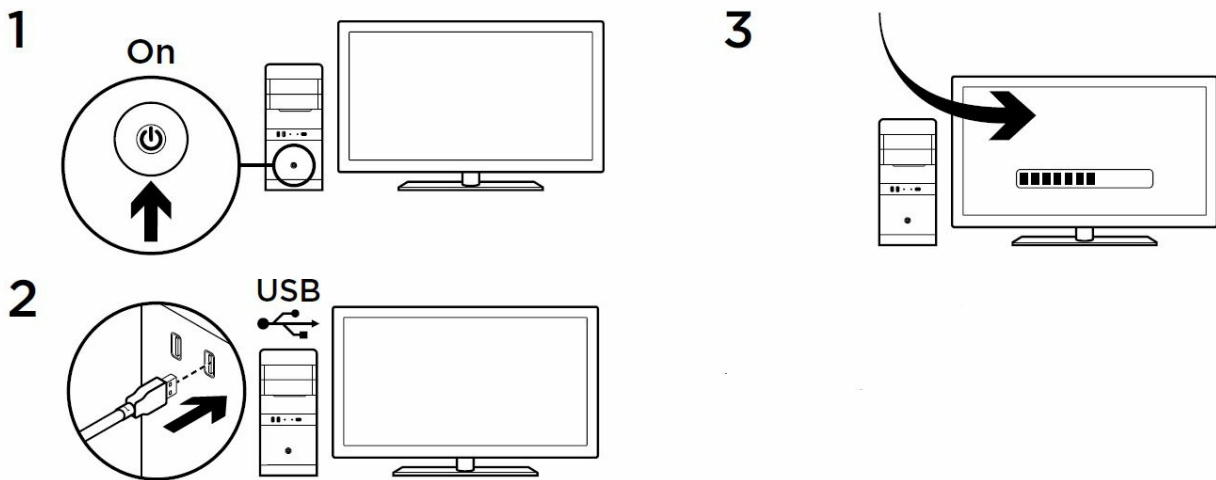
SPECIFICATION

- **BRAND:** Logitech
- **COLOR:** Black
- **CONNECTIVITY TECHNOLOGY:** USB
- **MOVEMENT DETECTION TECHNOLOGY:** Optical
- **NUMBER OF BUTTONS:** 11
- **ITEM WEIGHT:** 3 ounces
- **PRODUCT DIMENSIONS:** 1.57 x 2.95 x 5.2 inches
- **BATTERIES:** 1 Lithium Metal batteries required. (included)

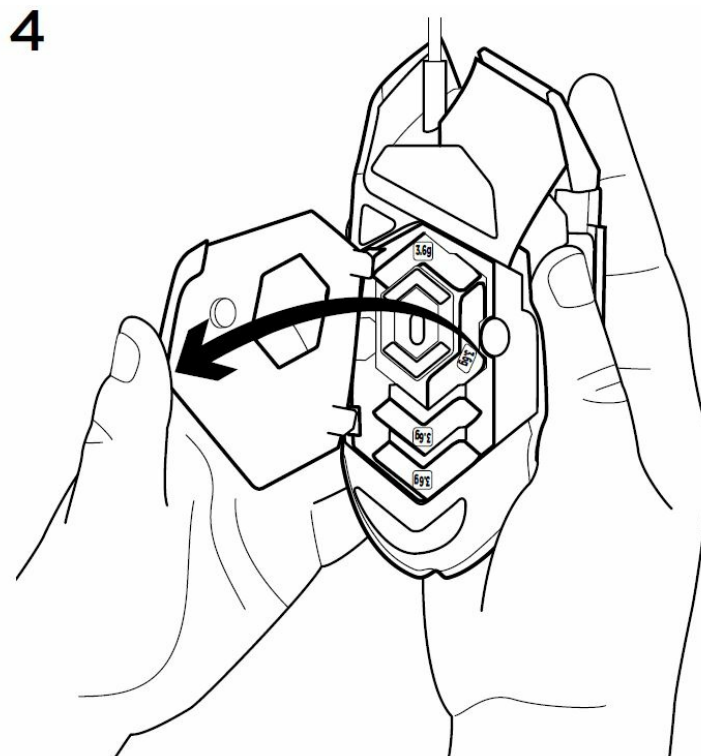
PRODUCT DESCRIPTION

With rapid DPI change from low to high sensitivity, you can give your game even more control. To switch between headshot-accurate low-sensitivity targeting and blazing-fast high-DPI manoeuvring, use the thumb button. With a click, scroll through as many as five DPI settings. You can see whatever setting you are on thanks to three DPI indicator lights. Use the default settings, which are perfect right out of the box, or customize these DPI settings with Logitech Gaming Software (LGS). The scroll wheel can be locked down for single-click precise scrolling or unlocked for extremely fast continuous scrolling over lengthy pages. The substantial metal wheel provides secure, enjoyable control in either mode.

1. 11 programmable buttons, unique RGB lighting, a large selection of weight and balancing options, on-the-fly DPI shift settings, desk surface customization, and more.
2. Utilize Logitech Gaming Software to customize the G502 for your gaming setup and preferences. Along with the fundamental performance and customization elements, numerous small aspects were carefully planned
3. To find primary buttons with mechanical microswitches rated to 20 million clicks, look for rubberized grips, braided cables with hook and loop cable ties, magnetic weight-cavity doors, and other items

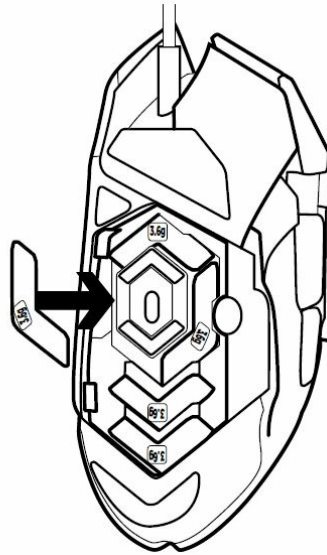


4. Your G502 is ready to play games. If you would like to customize your G502, refer to the next section.



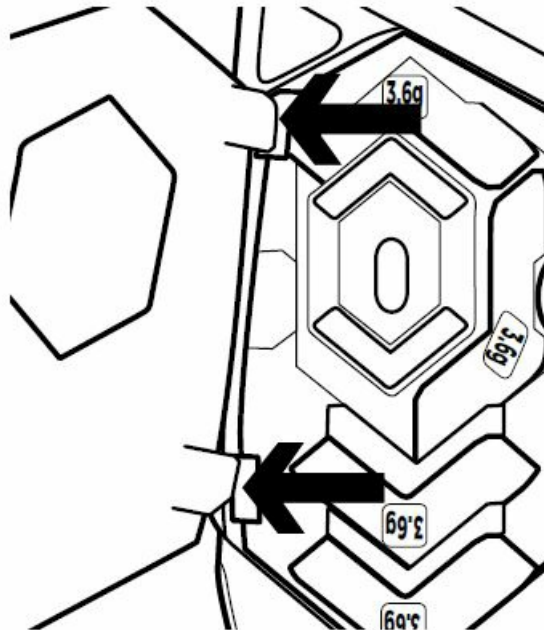
5. You can customize the three onboard profiles of the G502—surface tuning, button programming, and tracking behavior—using the Logitech Gaming Software. Download this free software and learn how to customize the G502 at www.logitech.com/support/g502

5



6. To adjust the weight and balance of your G502, first open the weight door by grasping the mouse firmly in your right hand and pulling the blue tab down with your left thumb.

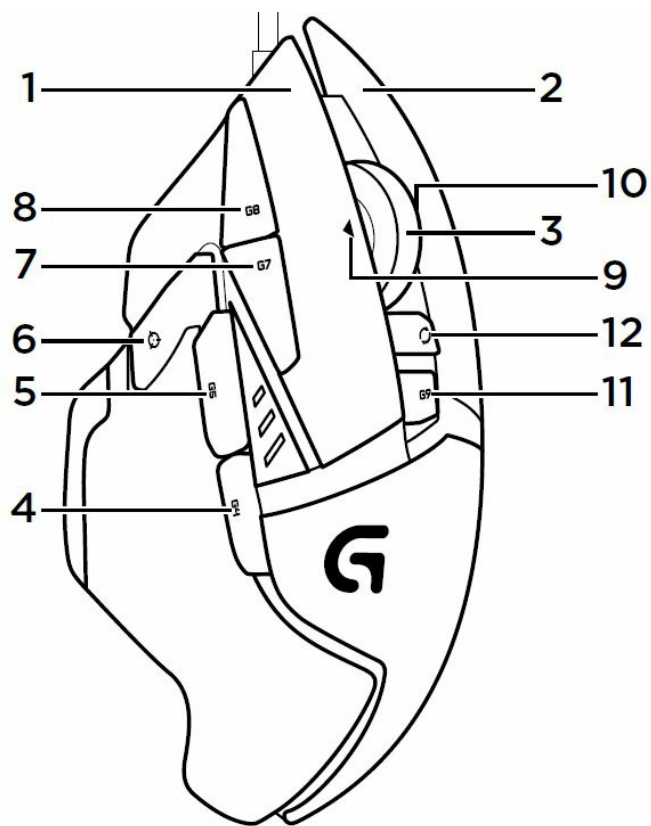
6



You can place up to five 3.6-gram weights in a number of different orientations. Experiment with different positions for the weights to find an overall weight and balance that feels right for you.

After inserting the weights, close the weight door by inserting the tabs on the weight door into the slots on the left side of the mouse and rotating the door down until the magnet holds the weight door firmly closed. Out of the box, the sensor for the G502 is configured to deliver amazing tracking across a wide range of surfaces. For an extra edge, it can also be further tuned for optimal performance with the specific surface that you use for gaming. To tune the sensor, use the Logitech Gaming Software.

11 Fully Programmable Buttons



1. Left (Button 1)
2. Right (Button 2)
3. Wheel click (Button 3)
4. Back (Button 4)
5. Forward (Button 5)
6. DPI Shift (Button G6)
7. DPI Down (Button G7)
8. DPI Up (Button G8)
9. Scroll left (wheel tilt left)
10. Scroll right (wheel tilt right)
11. Profile select (Button G9)
12. Wheel mode shift (not programmable)

	Profile 1* (High- DPI gaming)	Profile 2* (Low- DPI gaming)	Profile 3* (Standard: unshifted)	Profile 3* (Standard: G-shifted)
DPI values	1200, 2400, 3200, 6400	400, 800, 1600, 2400	2400	2400
Default DPI value	2400	1600	2400	2400
DPI Shift value	1200	400	N/A	N/A
Reports/sec	1000	1000	500	500
1	Button 1 (left click)	Button 1 (left click)	Button 1 (left click)	Button 1 (left click)
2	Button 2 (right click)	Button 2 (right click)	Button 2 (right click)	Button 2 (right click)
3	Button 3 (middle click)	Button 3 (middle click)	Button 3 (middle click)	Ctrl-T
	Profile 1* (High- DPI gaming)	Profile 2* (Low- DPI gaming)	Profile 3* (Standard: unshifted)	Profile 3* (Standard: G-shifted)
4	Button 4 (back)	Button 4 (back)	Button 4 (back)	Ctrl-Shift-Tab
5	Button 5 (forward)	Button 5 (forward)	Button 5 (forward)	Ctrl-Tab
6	DPI Shift (sniper)	DPI Shift (sniper)	G-Shift (double functions)	N/A
7	DPI Down	DPI Down	Ctrl-C	Ctrl-X
8	DPI Up	DPI Up	Ctrl-V	Ctrl-Z
9	Scroll left	Scroll left	Scroll left	Ctrl-F4
10	Scroll right	Scroll right	Scroll right	Ctrl-Shift-T
11	Next profile	Next profile	Next profile	Ctrl-0

ONBOARD PROFILES

The G502 has three preconfigured profiles, one each for high-sensitivity gaming, low-sensitivity gaming, and standard mouse usage. Use Button 9 (see mouse drawing) to rotate through these default profiles. When you change profiles, the DPI indicator lights will change color from cyan to blue for three seconds and will indicate the new mode as shown here:

DPI INDICATORS

DPI values are shown using the three LEDs indicated in the mouse drawing. The image below shows which DPI value is being indicated by the LED panel.

HYPERFAST SCROLL WHEEL

The G502 features Logitech's exclusive dual-mode hyperfast scroll wheel. Click the button right below the wheel (Button G12) to switch between the two modes.

TIPS

- Weight and balance tuning is very much an exercise in personal preference. Generally speaking, more weight makes it easier to control high DPI settings, while less weight makes low-DPI gaming less fatiguing.
- Centering weights along an imaginary line between your thumb and right-side grip finger(s) will help maintain optimal front-to-back balance
- The effects of changing weights may not be immediately apparent. After changing the position or number of weights, give yourself some time to experience the difference before changing them again.
- Try the default profile settings in practice games before changing these settings.
- Advanced gamers can customize each game according to their specific button configuration and sensitivity-switching needs. The Logitech Gaming Software stores this information and applies it automatically when the game is detected.

IF THE MOUSE DOESN'T WORK

- Unplug and re-plug the USB cable to ensure a good connection.
- Try the mouse USB cable in another USB port on the computer.
- Use only a powered USB port.
- Try rebooting the computer.
- If possible, test the mouse on another computer.
- Visit www.logitech.com/support/g502 for more suggestions and assistance.

WHAT DO YOU THINK?

Please take a minute to tell us. Thank you for purchasing our product. www.logitech.com/ithink

FAQs

What is the difference between G502 and G502 Proteus Spectrum?

The G502 Proteus Spectrum has RGB lighting.

Does the G502 have a weight adjustment system?

Yes, it has a weight adjustment system.

Does the G502 have a DPI indicator light?

Yes, it has a DPI indicator light.

Does the G502 have a DPI shift button?

Yes, it has a DPI shift button.

This is a right mouse, but can I adapt to it for a lefty?

No, see the Logitech G Pro (\$50usd) or Logitech G900 (\$80usd) for ambi mouses. G Pro is fantastic.

Does the mouse have an infinite scroll?

The G502 features Logitech's exclusive dual-mode hyperfast scroll wheel. Click the button right below the wheel (Button G12) to switch between the two modes.

Do you have to be running the Logitech software for the lighting effects to work or can you run the software once to set it up then quit out of it?

The software is ALWAYS running once installed and initially set up. It stays in the background.

What's on the end of the cord? (USB, micro USB, lightning port)

USB.

Is this compatible with mac?

Yes, you can find the drivers on the Logitech website.

How long is the cable?

6 1/2 feet or 78 inches. Measured using a measuring tape.

Is this mouse durable?

It does seem very durable but the mouse scroll wheel takes some getting used to. It has two ways it can spin, one way clicks and is kind of hard to use and the other which is a free spin and it is weird.

I am talking to my friend on discord and every time he talks my mouse flashes blue is there a way I can turn that off?

yes, need to install the Logitech software, you can change color, set speed or switch off the light.



[Download PDF Links / Logitech G502 Pro 2023 / Logitech G502 Pro Gaming Mouse Spectrum-RGB-Tunable-Gaming-Mouse.mp4](#)

[Manuals+.](#)