



logitech K860 Wireless Split Keyboard User Manual

[Home](#) » [Logitech](#) » logitech K860 Wireless Split Keyboard User Manual 

Contents

- 1 logitech K860 Wireless Split Keyboard
- 2 PERSONAL WORKSPACE SOLUTIONS
 - 2.1 PRODUCTS
 - 2.2 TECHNOLOGY
 - 2.3 SOFTWARE
 - 2.4 AN OPTION FOR EVERYONE
- 3 TEAM WORKSPACE SOLUTIONS
 - 3.1 THE TEAM WORKSPACE ECOSYSTEM
 - 3.2 TECHNOLOGY
- 4 PLATFORMS
- 5 EXTENDED WARRANTY
- 6 Documents / Resources
 - 6.1 References
- 7 Related Posts

logitech

logitech K860 Wireless Split Keyboard



WELCOME TO THE NEW LOGIC OF WORK

In an enterprise landscape made up of in-office, hybrid, and remote workers, navigating work can be challenging. Logitech's enterprise-grade ecosystem of products, software, and services is purpose-built to enable a better employee experience and help unlock productivity and collaboration for your team, regardless of location.

PERSONAL WORKSPACE SOLUTIONS

Our personal workspace solutions are easy to set up and manage, helping people create and collaborate effectively and securely.

TEAM WORKSPACE SOLUTIONS

Our team workplace solutions are designed to enable easy and intuitive hybrid collaboration experiences while being simple to deploy and maintain.

PERSONAL WORKSPACE SOLUTIONS

Drive the business forward with desk solutions that are easy to set up, easier to use, and work on any platform.

THE PERSONAL WORKSPACE ECOSYSTEM

PRODUCTS

MICE + KEYBOARDS

Improve employee workflow and productivity with our range of mice and keyboards.



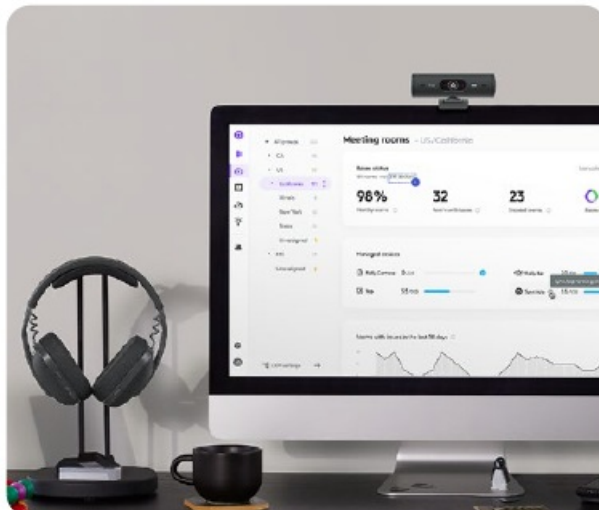
LOGI DOCK

Declutter user desktops with our all-in-one docking station with meeting controls and built-in speakerphone.



WEBCAMS + HEADSETS

Help users improve video and audio quality in virtual meetings and more with Logitech webcams and headsets.



PRESENTERS

Enable engaging presentations, in person and virtually.



TECHNOLOGY



LOGI BOLT

Our next-gen wireless technology meets rising enterprise security expectations.

- **Secure Connections**

FIPS-compliant technology, Bluetooth® Low Energy Security Mode 1, Level 4, and anti-rollback security DFUs.

- **Robust Signal**

High performance, even in noisy wireless environments.

- **Universal Compatibility**

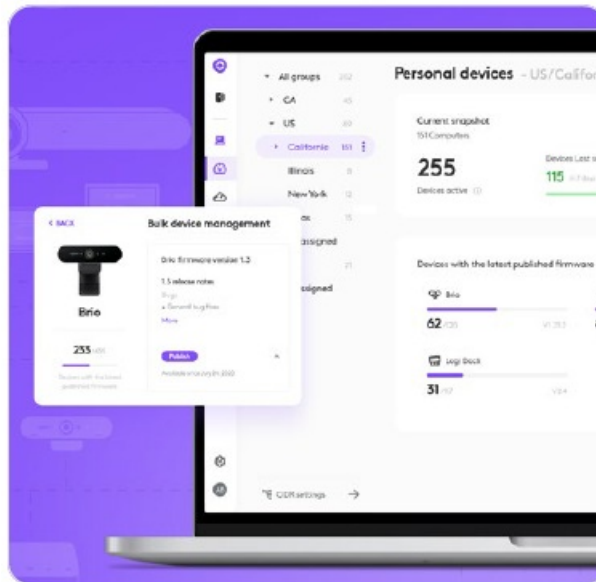
Dual connectivity: Logi Bolt + Bluetooth. Compatible with all major operating systems, making an easy standard to deploy.

SOFTWARE

MANAGEABILITY

LOGITECH SYNC

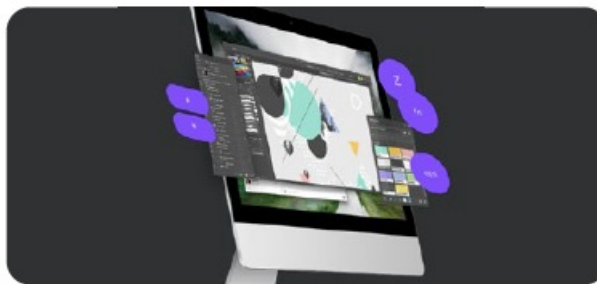
Manage, maintain, and update devices to support hybrid workforces.



CUSTOMIZATION

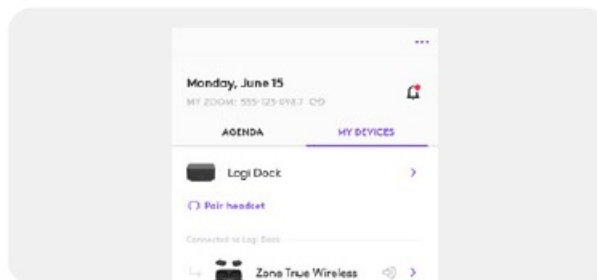
LOGI OPTIONS+

Allow users to customize Logitech mice and keyboards to work how they want.



LOGI TUNE

This app puts webcam, headset, and Logi Dock settings at users' fingertips.



AN OPTION FOR EVERYONE

Everyone works differently. Choose from our range of mainstream, performance, and ergonomic devices to deliver a better employee experience for all.

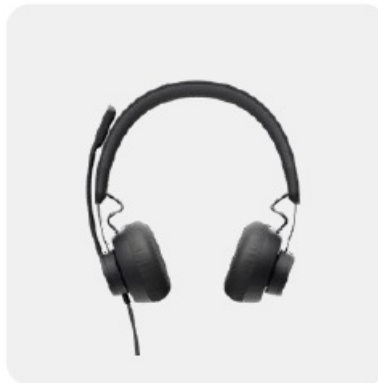
MAINSTREAM – Everyday Tools That Mean Business



FEATURED PRODUCTS



**SIGNATURE
MK650 COMBO
FOR BUSINESS**



**ZONE WIRED
HEADSET**



**C920e BUSINESS
WEBCAM**

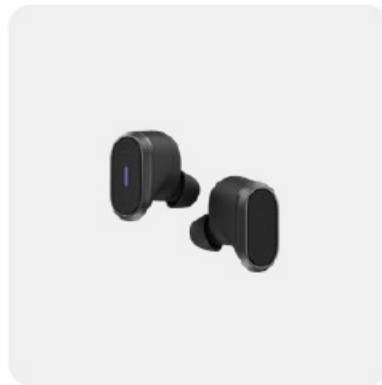
PERFORMANCE – High Performance for High Achievers



FEATURED PRODUCTS



**MX KEYS COMBO
FOR BUSINESS |
GEN 2**



**ZONE TRUE
WIRELESS EARBUDS**

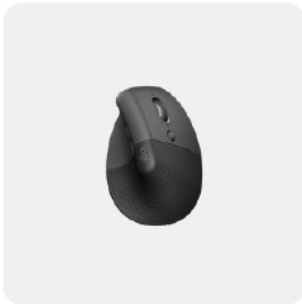


**BRIO 4K BUSINESS
WEBCAM**

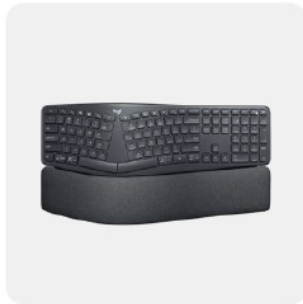
ERGONOMIC – Bring Wellbeing into the Workspace



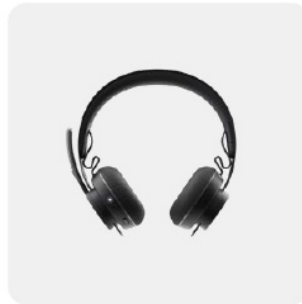
FEATURED PRODUCTS



**LIFT
FOR BUSINESS**



**ERGO K860 SPLIT
KEYBOARD FOR**



**ZONE WIRELESS
(PLUS) HEADSET**



**BRIO 505
BUSINESS WEBCAM**

TEAM WORKSPACE SOLUTIONS

Empower everyone to be seen and heard from anywhere with solutions that make collaboration easy.

THE TEAM WORKSPACE ECOSYSTEM

PRODUCTS

CONFERENCE CAMERAS

Help enable more equitable meetings with high-quality video and audio.



CAMERAS + ROOM ADD-ONS

Scribe whiteboard camera, Sight tabletop camera, and add-ons for specialty use cases.



COMPUTE

Easily deploy leading video conferencing platforms with our dedicated meeting room compute.



VIDEO BARS

All-in-one video bars that bring remote participants into the conversation.



TOUCH CONTROLLERS

Deliver one-touch join, content-sharing, and a consistent experience across all rooms.

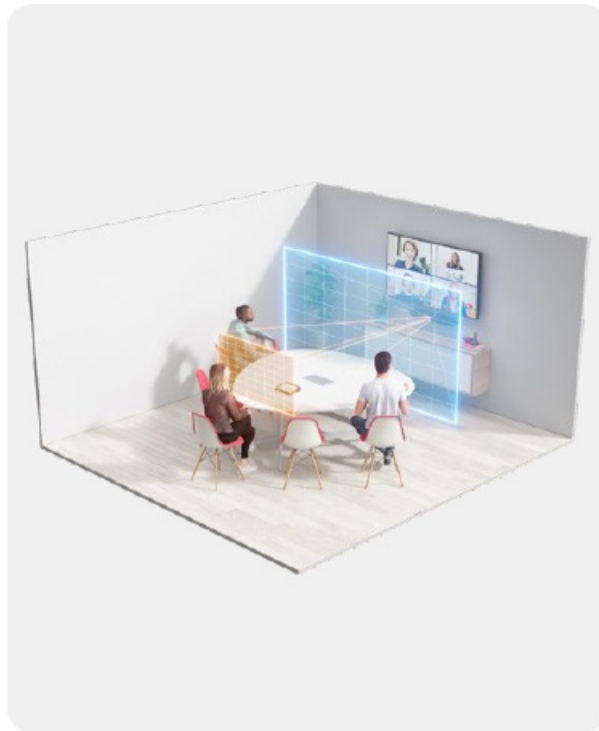


ACCESSORIES

Enhance your team workspaces with a range of custom accessories.



TECHNOLOGY



RIGHTSENSE™

Logitech RightSense intelligent technologies make video meetings easy, automatic, and intuitive.

- **RightSight™**

Automated camera control moves the lens and adjusts the zoom ensuring meeting participants are always in view and optimally pictured on the screen.

- **RightLight™**

Light and color optimization that reduces noise, optimizes light balance and fine-tunes color and saturation for natural results across all skin tones.

- **RightSound™**

A suite of audio processing technologies and design innovations that deliver enterprise-class sound to video meetings so speakers can convey their every word with clarity.

PLATFORMS

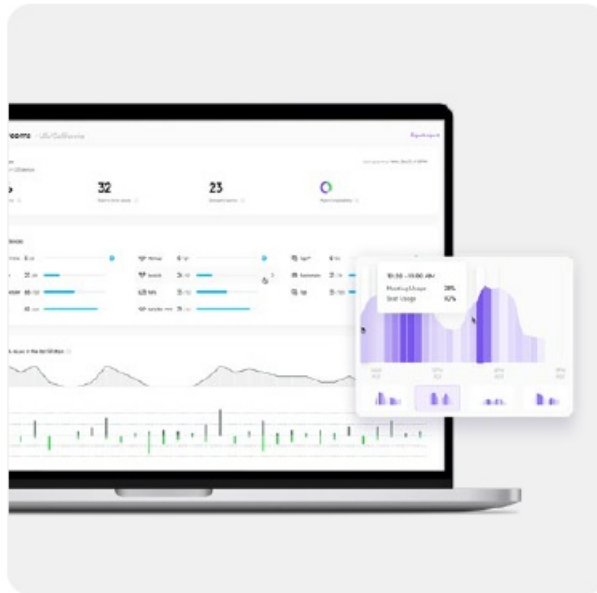
Logitech team workspace solutions are compatible with the most popular video meeting platforms.



SOFTWARE

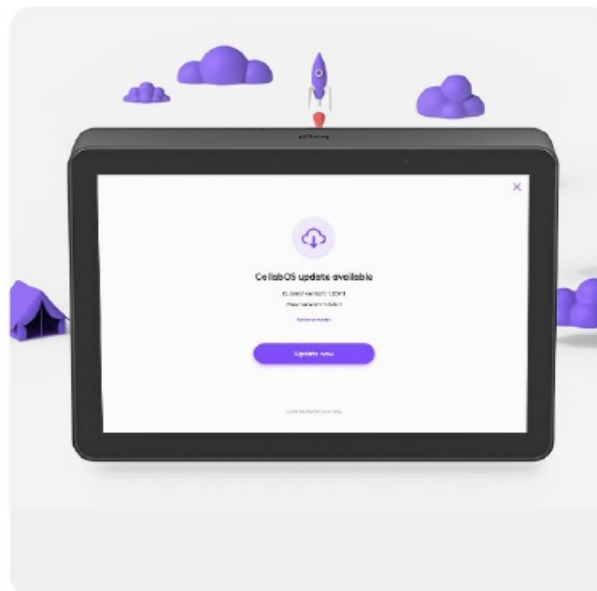
LOGITECH SYNC

Maintain and update devices, and get insights for your deployment.



CollabOS

This operating system integrates with top video conferencing, scheduling, and space management providers.



SERVICES

Logitech services provide peace of mind. Our solutions will do the job right, or we'll make it right.

LOGITECH SELECT

Logitech Select is a comprehensive service plan offering 24/7 support, a dedicated Customer Success Manager,¹ product replacement, accelerated RMA, on-site spares, and 1 and advanced Logitech Sync analytics through integration with ServiceNow.²

1. Available with the purchase of a service plan for 50+ rooms.
2. Available for users of Logitech Sync.



EXTENDED WARRANTY

With an extended warranty,3 your Logitech purchases are protected against defects for up to five years from the purchase date. Extended warranties are available for either one year or three years beyond the original Logitech manufacturer’s limited two-year warranty.

Terms and conditions apply. Not available in all countries. Contact your reseller.



ELEVATE YOUR WORKSPACES


Logitech designs workspace solutions that make equitable working experiences possible for everyone. We help teams work better together, from anywhere, without compromising on quality, productivity, or the creativity that comes from collaboration.

Contact your Logitech Account Rep for more information.

Logitech.com/business

© 2022 Logitech. All rights reserved. Logitech, the Logitech logo and other Logitech marks are owned by Logitech and may be registered. All other trademarks are the property of their respective owners. Logitech assumes no responsibility for any errors that may appear in this publication. Product, pricing and feature information contained herein is subject to change without notice.

Documents / Resources

	<p>logitech K860 Wireless Split Keyboard [pdf] User Manual</p> <p>K860 Wireless Split Keyboard, K860, Wireless Split Keyboard, Split Keyboard, Keyboard</p>
---	---

References

-  [Logitech Business | New Logic of Work](#)