



# Logitech K350 Wireless Wave Ergonomic Keyboard User Guide

[Home](#) » [Logitech](#) » Logitech K350 Wireless Wave Ergonomic Keyboard User Guide 

## Contents

- [1 Logitech K350 Wireless Wave Ergonomic Keyboard](#)
- [2 IN THE BOX](#)
- [3 Keyboard features](#)
- [4 F-key usage](#)
- [5 Customizing the keyboard](#)
- [6 Troubleshooting](#)
- [7 Specs & Details](#)
  - [7.1 Dimensions](#)
  - [7.2 Technical Specifications](#)
  - [7.3 Warranty Information](#)
  - [7.4 Part Number](#)
- [8 FAQ'S](#)
- [9 VIDEO](#)
- [10 Documents / Resources](#)
- [11 Related Posts](#)



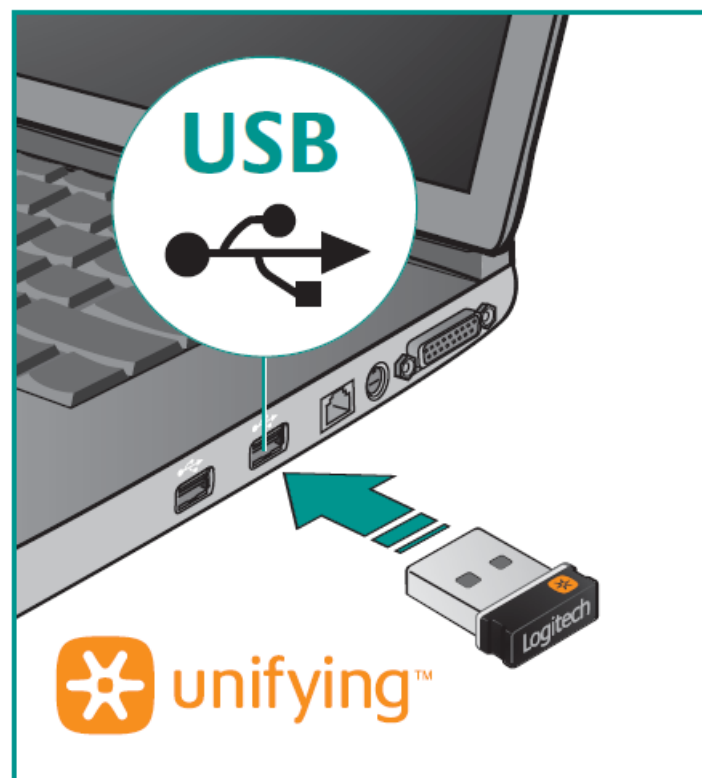
**Logitech K350 Wireless Wave Ergonomic Keyboard**

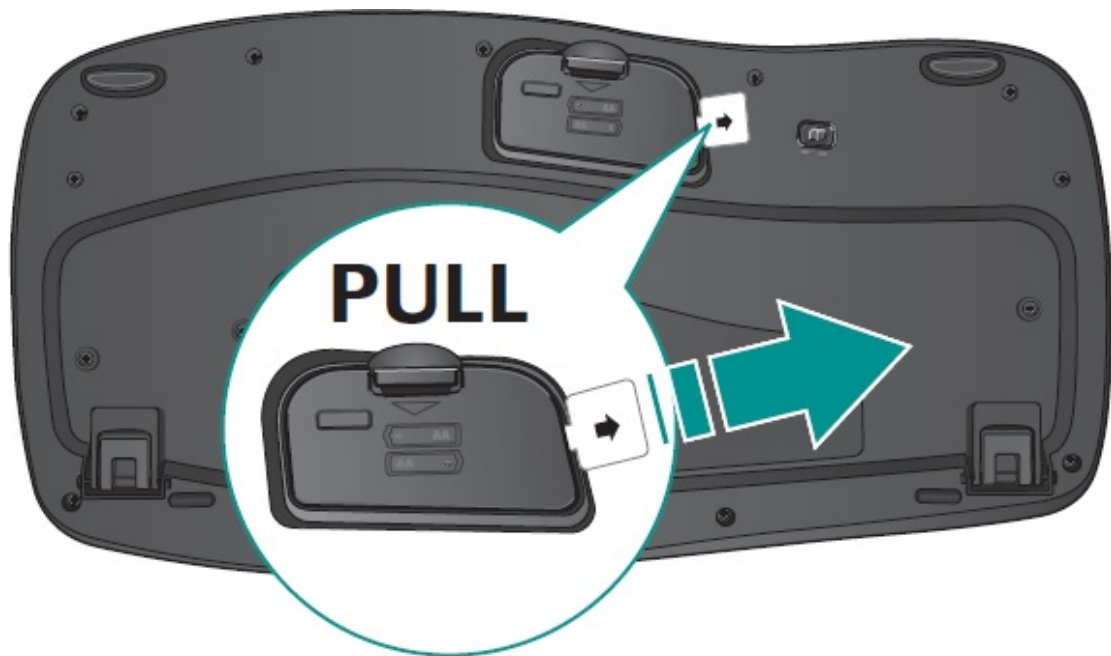


Logitech K350 Wireless Wave Ergonomic Keyboard

[www.logitech.com/support](http://www.logitech.com/support)

**IN THE BOX**

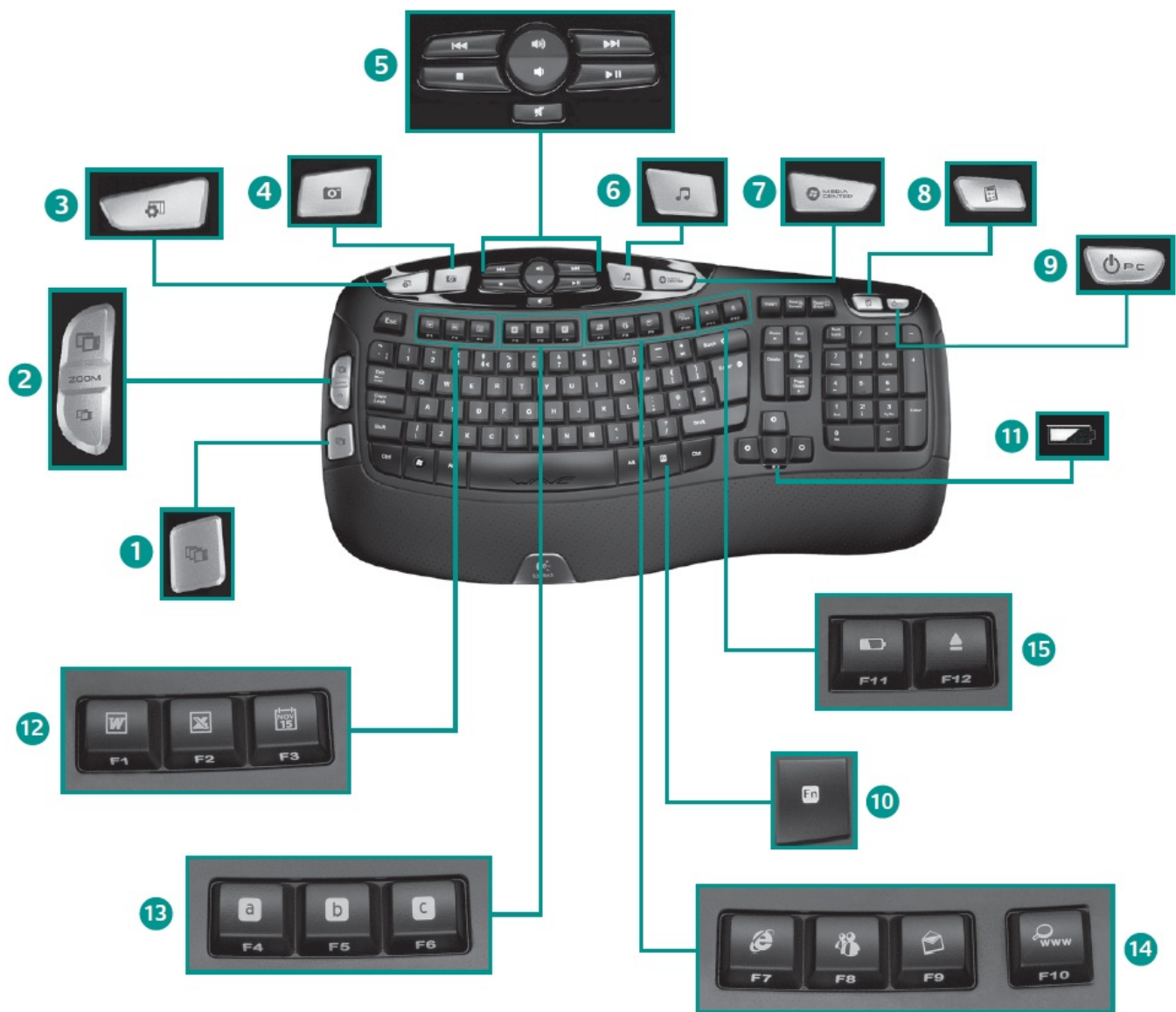




**Your Keyboard is now ready for use.**

Optional: To enable and customize the keyboard hotkeys (F-keys and media keys), install the Logitech® SetPoint™ Software.

### **Keyboard features**



1. Windows Vista® Flip 3D (Application Switcher in Windows® XP)\*
2. Zoom in/out documents and images or scroll windows and Flip 3D\*
3. Windows Vista® Gadget (Yahoo® Widgets in Windows XP)\*
4. Windows Vista® Photo Gallery (My Pictures in Windows XP)\*
5. Multimedia navigation
6. Media player
7. Windows Media Center\*
8. Windows Calculator
9. PC sleep
10. FN key (for use with F-keys)
11. Battery status indicator ( FN +F11)
12. Productivity zone
  - FN +F1 Launches document application\*
  - FN +F2 Launches spreadsheet application\*
  - FN +F3 Launches calendar\*
13. Favorites zone
  - FN +F4 to F6 program your favorite application, folder, or website with a long, simultaneous press of and the corresponding F4, F5, or F6 key (just like the presets of a car radio).\*

#### 14. Internet zone

FN +F7 Launches Internet browser

FN +F8 Launches instant message application\*

FN +F9 Launches e-mail application

FN +F10 Launches Windows search

#### 15. Convenience zone

FN +F11 Battery status check

FN +F12 Opens/closes CD-DVD tray\*

### F-key usage

User-friendly enhanced F-keys let you launch applications easily.

To use the enhanced functions (blue icons), first press and hold the FN key; second, press the F-key you want to use.

**Tip:** In the software settings, you can invert the FN mode if you prefer to access directly the enhanced functions without having to press the FN key.



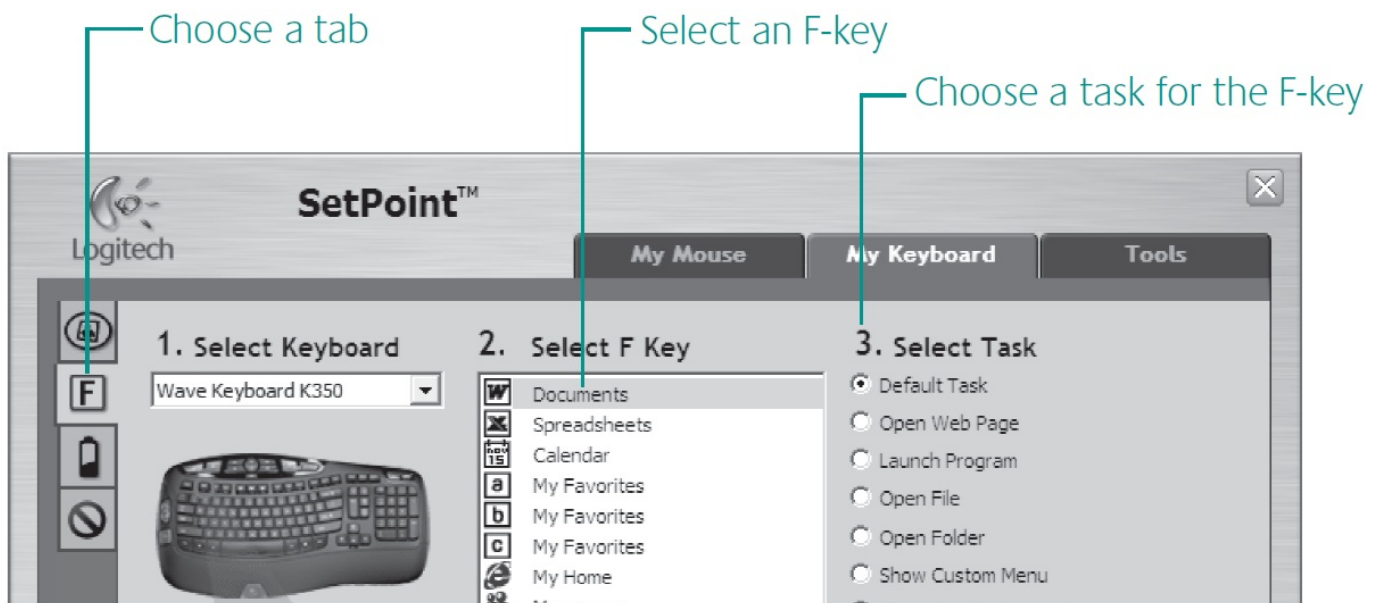
### Customizing the keyboard

1. Double-click the Mouse and Keyboard Settings icon on the Windows® desktop to make changes.
2. To customize the keyboard, click the My Keyboard tab.
3. A series of tabs is shown on the left.





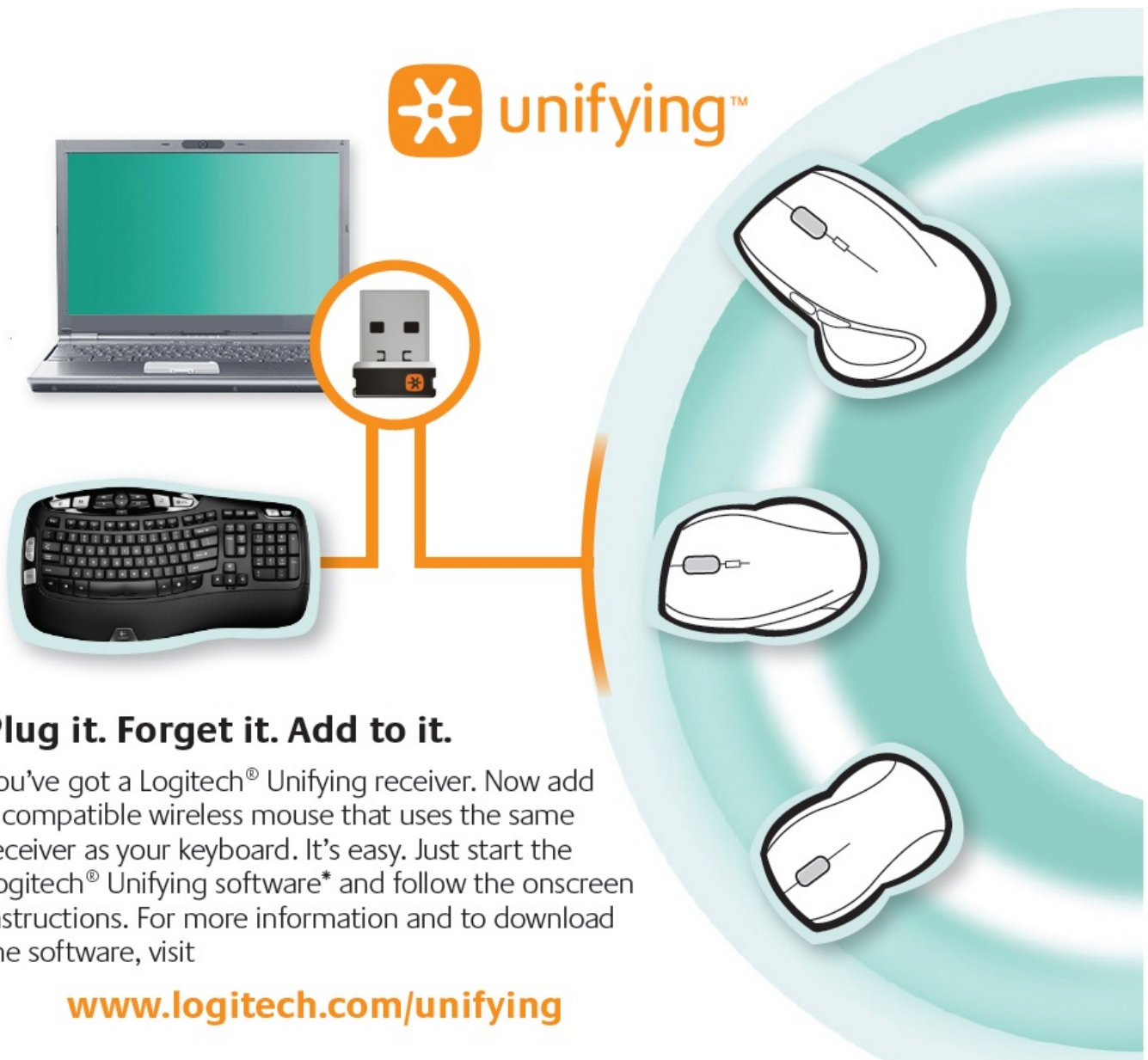
4. Choose a tab, such as a keyboard F-key Settings. A picture of the keyboard is displayed showing F-keys (list 2) to which tasks can be assigned (list 3).
5. In the 2. Select F-key list, highlight the F-key to be reassigned a task.
6. In the 3. Select Task list, highlight the new task.
7. When you are done, click OK to save the new F-key assignments.



Use the same sequence of steps to specify changes on other keyboard tabs.  
For the keyboard, you can

- Specify settings for F-keys

- Specify settings for Hot keys
- Check battery level
- Disable keys you don't use often



## Plug it. Forget it. Add to it.

You've got a Logitech® Unifying receiver. Now add a compatible wireless mouse that uses the same receiver as your keyboard. It's easy. Just start the Logitech® Unifying software\* and follow the onscreen instructions. For more information and to download the software, visit

**[www.logitech.com/unifying](http://www.logitech.com/unifying)**

[www.logitech.com/unifying](http://www.logitech.com/unifying)

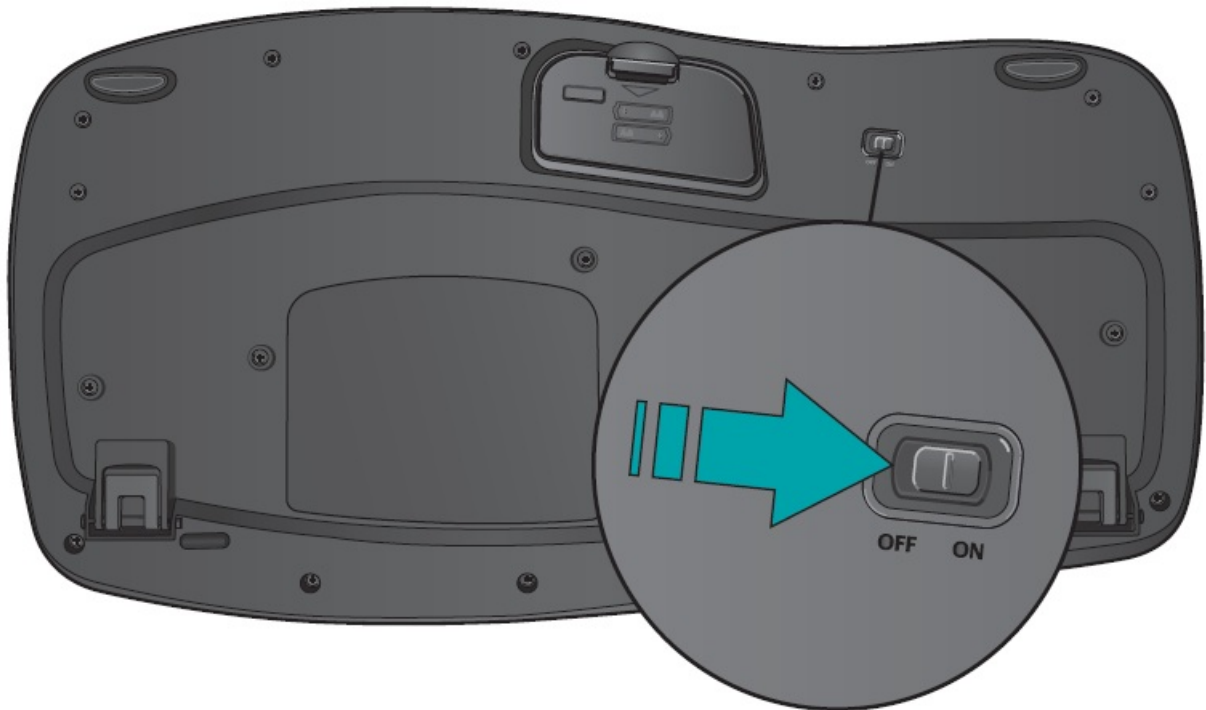
## Troubleshooting

- Is the Power on? The power switch for the keyboard must be in the ON position. Battery LED should light green.
- How are the batteries? Check the keyboard battery installation or replace the batteries. The keyboard uses two AA alkaline batteries.
- Check the Unifying receiver. Plug the Unifying receiver into a different USB port. Remove any metal object between the Unifying receiver and the keyboard that may interfere with reception.
- Re-establish the connection. Use the Unifying software to reset the connection between the keyboard and Unifying receiver. Refer to the Unifying section in this guide for more information (p. 13).
- Move closer? Try moving the keyboard closer to the Unifying receiver, or plug the Unifying receiver into the



receiver extender cable to bring it closer to the keyboard.

- Install the Logitech SetPoint Software. To enable and customize the keyboard hotkeys (F-keys, Zoom keys, Vista keys, and media keys), install the Logitech SetPoint Software.
- Restart the computer.



---

## Specs & Details

### Dimensions

**Height:** 10.44 in (26.51 cm)

**Width:** 19.69 in (50 cm)

**Depth:** 3.09 in (7.84 cm)

**Weight:** 35.20 oz (998 g)

#### Technical Specifications

**Battery:** 2 x AA batteries (pre-installed)

**Battery:** 3 years

#### Warranty Information

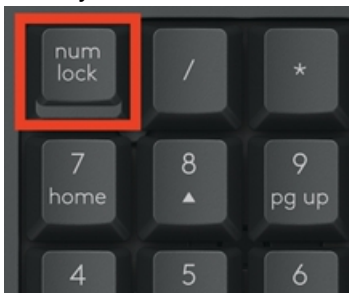
5-Year Limited Hardware Warranty

#### Part Number

- 920-001996

#### My NumPad/KeyPad is not working, what should I do?

– Make sure that the NumLock key is enabled. If pressing the key once doesn't enable NumLock, press and hold the key for five seconds.



– Verify that the correct keyboard layout is selected in Windows Settings and that the layout matches your keyboard.

– Try enabling and disabling other toggle keys such as Caps Lock, Scroll Lock, and Insert while checking if the number keys work on different apps or programs.

– Disable **Turn on Mouse Keys**:

1. Open the **Ease of Access Center** — click the **Start** key, then click **Control Panel > Ease of Access** and then **Ease of Access Center**.

2. Click **Make the mouse easier to use**.

3. Under **Control the mouse with the keyboard**, uncheck **Turn on Mouse Keys**.

– Disable **Sticky Keys, Toggle Keys & Filter Keys**:

1. Open the **Ease of Access Center** — click the **Start** key, then click **Control Panel > Ease of Access** and then **Ease of Access Center**.

2. Click **Make the keyboard easier to use**.

3. Under **Make it easier to type**, make sure all checkboxes are unchecked.

– Verify the product or receiver is connected directly to the computer and not to a hub, extender, switch, or something similar.

– Make sure the keyboard drivers are updated. Click [here](#) to learn how to do this in Windows.

– Try using the device with a new or different user profile.

– Test to see if the mouse/keyboard or receiver on a different computer.

#### Cleaning your Logitech device

In the event your Logitech device needs cleaning we have some recommendations:

##### Before You Clean

– If your device is cabled, please unplug your device from your computer first.

– If your device has user-replaceable batteries, please remove the batteries.

– Be sure to switch off your device and then wait 5-10 seconds before starting to clean.

– Don't put cleaning liquids directly on your device.

– For devices that are not waterproof, please keep moisture to a minimum and avoid any liquid dripping or seeping into the device

– When using cleaning sprays, spray the cloth and wipe — do not spray the device directly. Never submerge the

device in a liquid, cleaning or otherwise.

- Don't use bleach, acetone/nail polish remover, strong solvents, or abrasives.

### **Cleaning Keyboards**

- To clean the keys, use regular tap water to lightly moisten a soft, lint-free cloth and gently wipe down the keys.
- Use compressed air to remove any loose debris and dust between the keys. If you do not have compressed air available, you could also use cold-air from a hair-dryer.
- You can also use fragrance-free disinfecting wipes, fragrance-free anti-bacterial wet wipes, makeup removing tissue, or alcohol swabs containing less than 25% concentration of alcohol.
- Don't use bleach, acetone/nail polish remover, strong solvents, or abrasives.

### **Cleaning Mice or Presentation Devices**

- Use tap water to lightly moisten a soft, lint-free cloth and gently wipe down the device.
- Use lens cleaner to lightly moisten a soft, lint-free cloth and gently wipe down your device.
- You can also use fragrance-free disinfecting wipes, fragrance-free anti-bacterial wet wipes, makeup removing tissue, or alcohol swabs containing less than 25% concentration of alcohol.
- Don't use bleach, acetone/nail polish remover, strong solvents, or abrasives.

### **Cleaning Headsets**

- Plastic parts (headband, mic boom, etc.): it is recommended to use fragrance-free disinfecting wipes, fragrance-free anti-bacterial wet wipes, makeup-removing tissue, or alcohol swabs containing less than 25% concentration of alcohol.
- Leatherette earpads: it is recommended to use fragrance-free disinfecting wipes, fragrance-free anti-bacterial wet wipes, or make-up removal tissue. Alcohol wipes can be used on a limited basis.
- For the braided cable: it is recommended to use anti-bacterial wet wipes. When wiping cables and cords, grip the cord mid-way and pull towards the product. Don't forcefully pull the cable away from the product or away from the computer.
- Don't use bleach, acetone/nail polish remover, strong solvents, or abrasives.

### **Cleaning Webcams**

- Use tap water to lightly moisten a soft, lint-free cloth and gently wipe down the device.
- Use lens cleaner to lightly moisten a soft, lint-free cloth and gently wipe down the webcam lens.
- Don't use bleach, acetone/nail polish remover, strong solvents, or abrasives.

### **If Your Device Still Isn't Clean**

In most cases, you can use isopropyl alcohol (rubbing alcohol) or fragrance-free anti-bacterial wipes and apply more pressure when cleaning. Before using rubbing alcohol or wipes, we suggest you test it first in an inconspicuous area to make sure it doesn't cause discoloration or remove any printing on your device. If you're still not able to get your device clean, please consider [contacting us](#).

### **COVID-19**

Logitech encourages users to properly sanitize their products in accordance with guidelines put out by the [World Health Organization](#) and the [Centers for Disease Control](#) guidelines.

### **Wireless product not working properly when also using a USB 3.0 device**

When using a USB 2.0 2.4GHz wireless peripheral device (such as a mouse, keyboard, or headphones) with a PC that also has a USB 3.0 peripheral device plugged in, you may experience erratic operation caused by interference. This is especially likely to happen when using USB 3.0 remote hard drives or flash drives.

This interference may result in:

- Delayed response to mouse or keyboard inputs
- Missing keyboard characters or mouse commands
- Decreased operating distance between the USB 2.0 wireless device and its receiver

There are some techniques that can help early adopters of USB 3.0 to mitigate potential problems with their existing 2.4GHz wireless devices:

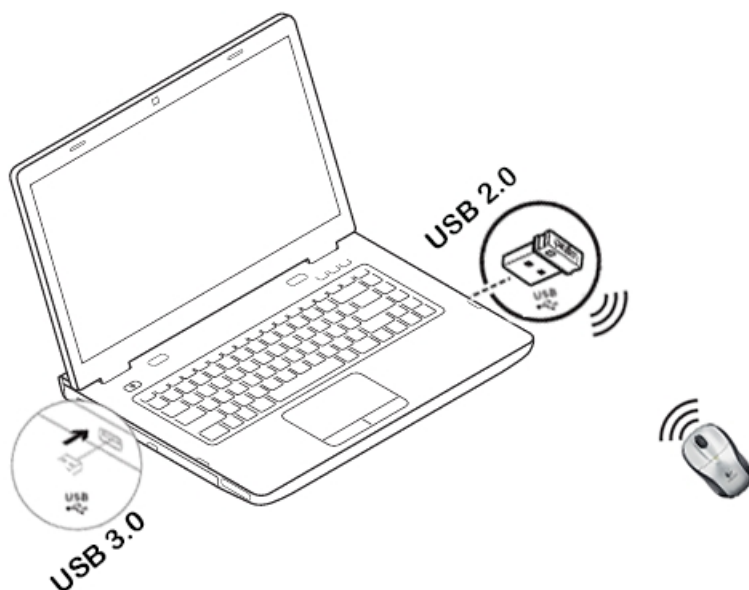
- If your PC has multiple USB 2.0 connectors available, separate your USB 3.0 and USB 2.0 receivers by as much distance as possible. For example, if your PC has a choice of USB 2.0 connectors, use the one on the opposite side of the PC from the USB 3.0 connector.

- Position your USB 2.0 receiver as close as possible to your wireless peripheral (mouse, keyboard, headphones, etc.).
- Use a standard, USB-extender cable to position your USB 2.0 wireless receiver as far away as possible from your USB 3.0 connector.

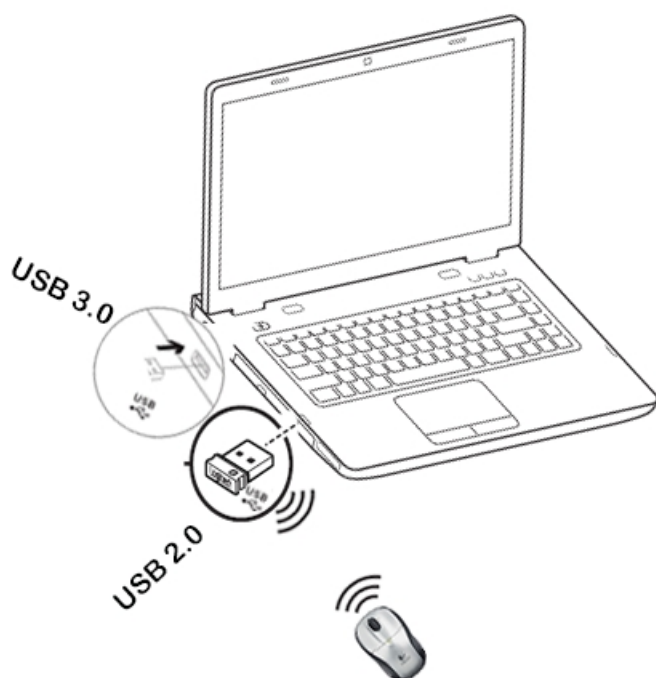
A USB-extender cable is available for Logitech customers who are experiencing this problem ( [click here for more information](#) ).

NOTE: A USB 3.0 connector sometimes referred to as Super Speed USB or SS, normally has a blue plastic insert in the connector. Unlike a USB 2.0 connector which has 4 pins within the connector, a USB 3.0 connector has 9 pins.

Move your USB 2.0 wireless receiver to the opposite side of your computer:

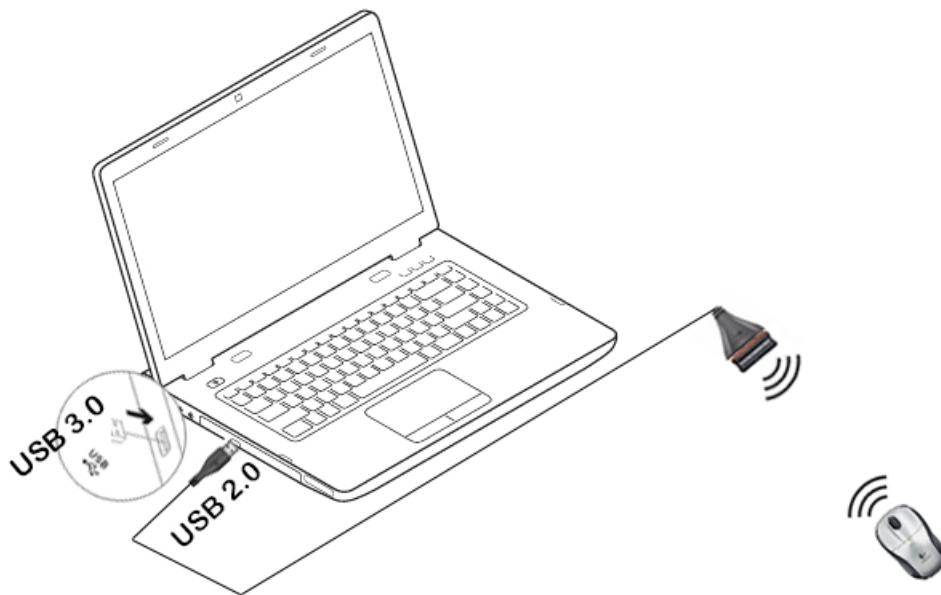


Make sure your USB 2.0 wireless receiver is in the USB 2.0 connector closest to your wireless peripheral:



Use a USB extended cable to position your wireless receiver as far away from your USB 3.0 peripheral as

possible:



### Windows 8 and Windows 10 product support and device compatibility

To check if your Logitech product works with Windows 8 or Windows 10, first select the appropriate product category from the list below.

- [Mice and keyboards](#)
- [Tablet and laptop accessories](#)
- [Gaming products](#)
- [Harmony remotes](#)
- [Speakers](#)
- [Headphones and headsets](#)
- [Smart radios](#)
- [Squeezebox network music players](#)
- [Alert security cameras](#)
- [WiLife security cameras](#)
- [Webcams](#)

### US, US International and United Kingdom keyboard layouts

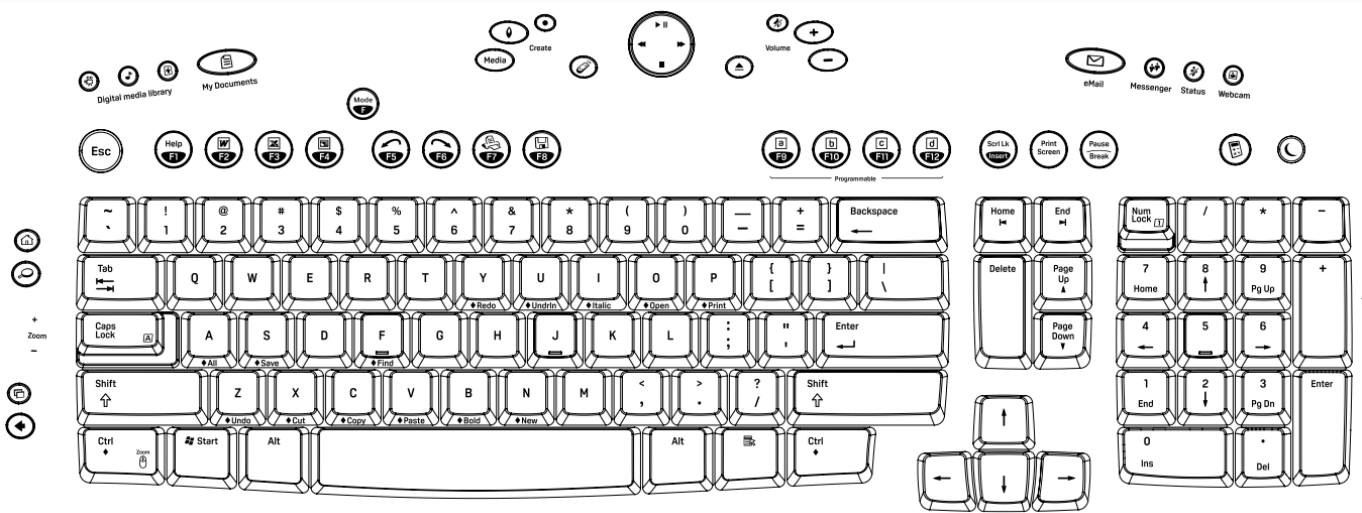
See the following for generic English-language keyboard layouts:

- US
- US International
- United Kingdom

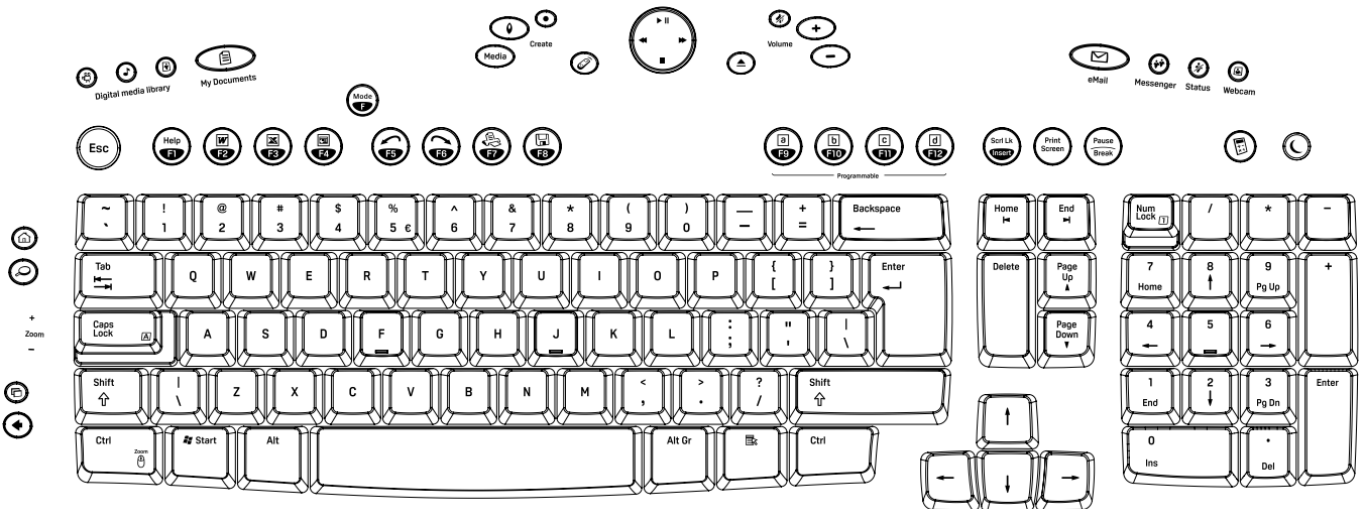
---

**US**

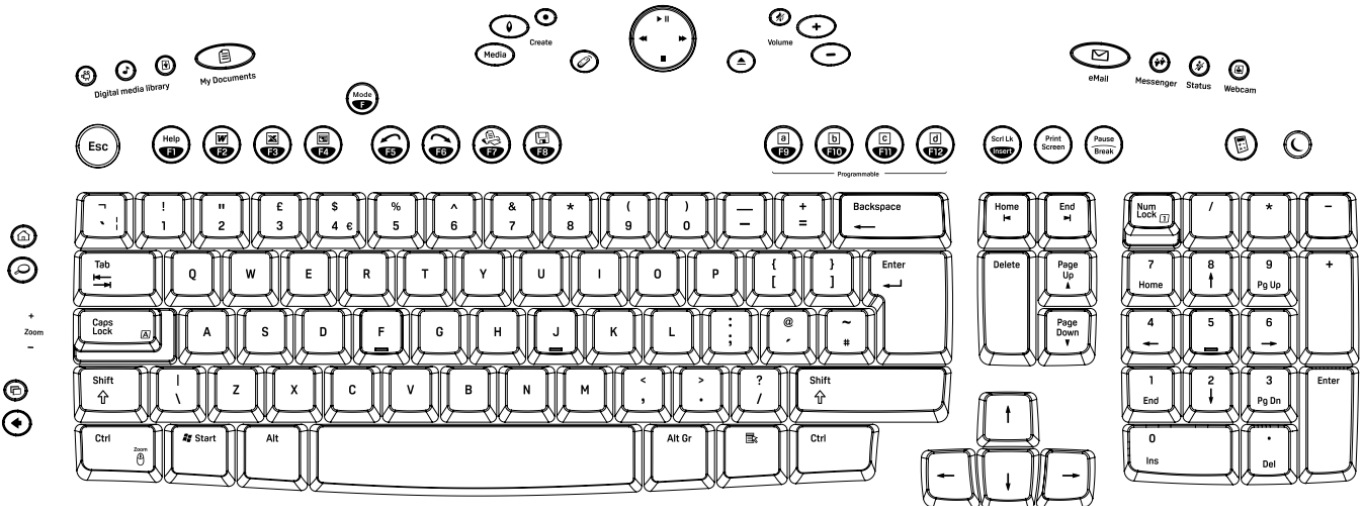




## US International



## United Kingdom



## Uninstalling Logitech SetPoint Software

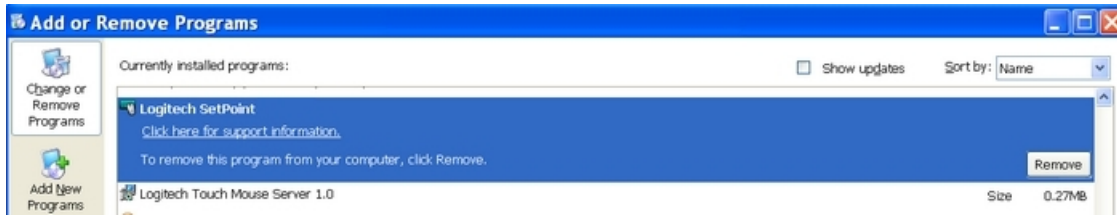
To uninstall Logitech SetPoint software, first select your operating system:

- Windows XP
- Windows 7 and Vista
- Windows 8
- Windows 10

### Windows XP

1. Go to **Add or Remove Programs**:

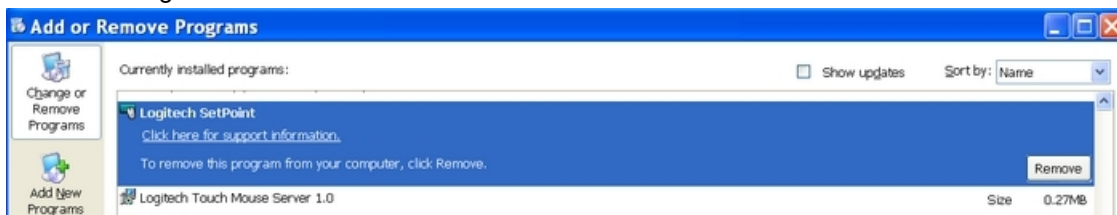
- Default Start Menu: Start > Control Panel > Add or Remove Programs
  - Classic Start Menu: Start > Settings > Control Panel > Add or Remove Programs
1. Select “Logitech SetPoint” from the list.



2. Click the **Remove** button.
  3. Follow the on-screen instructions to remove SetPoint from your system.
- NOTE: You may need to restart your computer to finish uninstalling SetPoint.

## Windows 7 and Vista

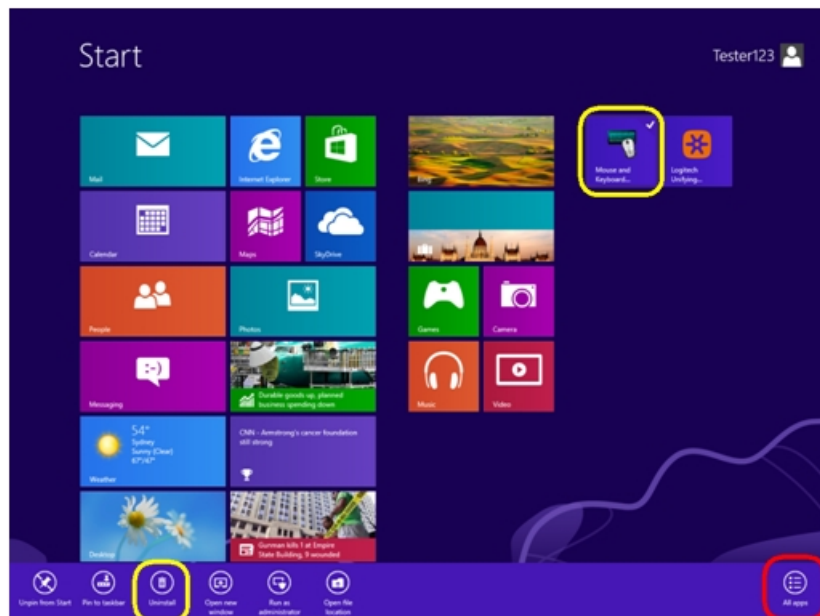
1. Go to **Uninstall a program**:
  - Default Start Menu: Start > Control Panel > Uninstall a program
  - Classic Start Menu: Start > Settings > Control Panel > Programs and Features
2. Select “Logitech SetPoint” from the list.



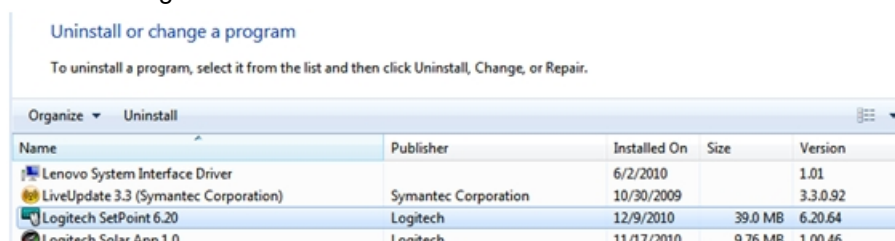
3. Click **Uninstall**.
  4. Follow the on-screen instructions to remove SetPoint from your system.
- NOTE: You may need to restart your computer to finish uninstalling SetPoint.

## Windows 8

1. Go to **Uninstall a program**:
  - Start screen > Right-click on **Mouse and Keyboard Settings** > Uninstall
  - Start screen > Right-click on empty space and select **All apps** > Control Panel > Uninstall a program



2. Select “Logitech SetPoint” from the list.



3. Click **Uninstall**.

Follow the on-screen instructions to remove SetPoint from your system.

NOTE:

4. You may need to restart your computer to finish uninstalling SetPoint.

### Windows 10 Go to **Programs and Features**:

1. Right-click on the Windows logo on the bottom left of the window, then click **Programs and Features**
2. Select Logitech SetPoint from the list of programs.

Windows 10

3. Click on **Uninstall** and follow the on-screen instructions to uninstall Setpoint.

NOTE: You may need to restart your computer to finish uninstalling.

### My Unifying mouse or keyboard wakes the computer even when it is set not to

#### Symptom

After disabling the ability to wake-up the system in Windows Device Manager, the Unifying mouse or keyboard still brings the system out of sleep mode.

#### Solution

Even if you bought a mouse-only or keyboard-only product, the Unifying receiver that came with it still enumerates for both the mouse and keyboard interfaces.

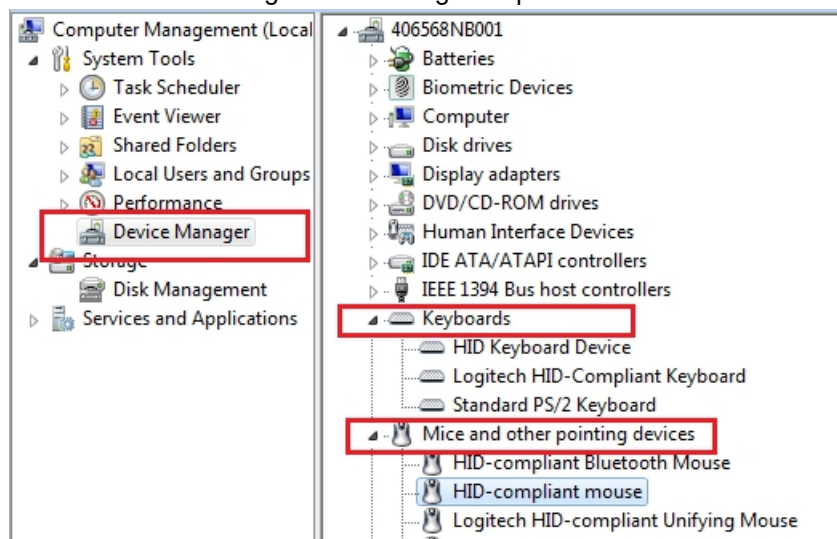
#### Example

If you have two mice attached, then you would need to uncheck the “Allow this device to wake the computer” option for both mice plus a keyboard in the Windows Device Manager.

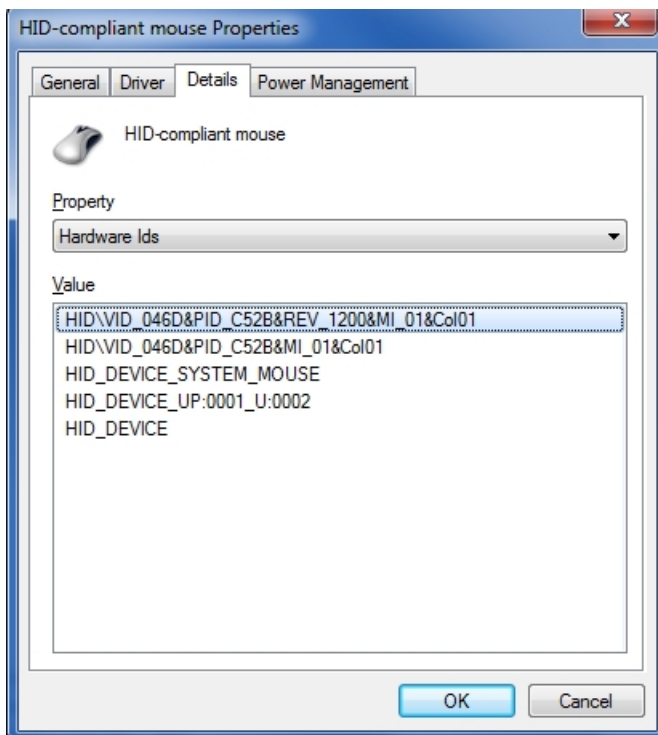
Use the process below to identify and configure the Unifying devices to not wake up the system in Windows Device Manager.

### Changing wake-up settings in the Device Manager

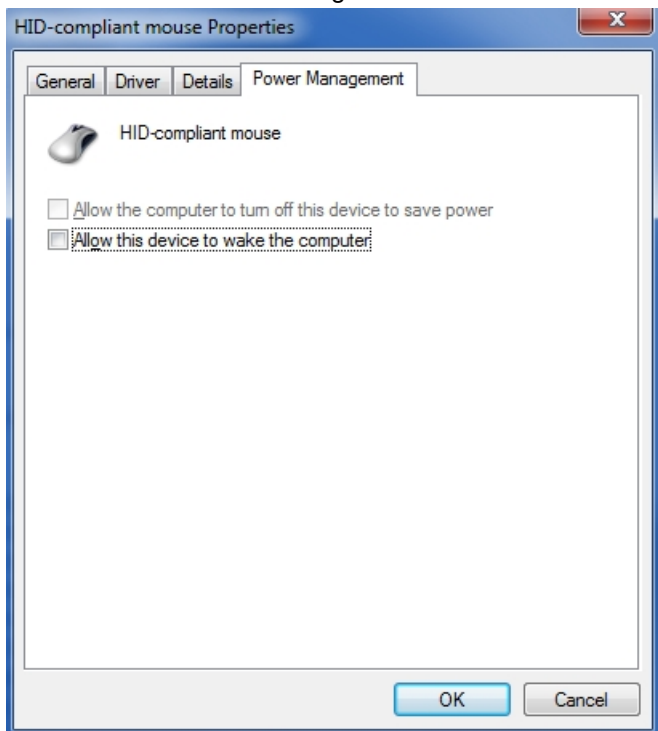
1. To change the wake-up settings in Windows Device Manager, you'll need to launch it through Computer Management and then make your selections. Here's how:
2. Click Start, right-click **Computer**, and then click **Manage**.
3. Click Device Manager in the navigation pane on the left.



4. Select and expand either the “Keyboards” or “Mice and other pointing devices” category.
5. Right-click on the first entry and go to Properties > Details tab > Hardware IDs under the Property section.
6. Make sure the Value section contains: **HID\VID\_046D&PID\_C52B**. If it doesn't, click **Cancel** and open the next mouse or keyboard entry in the list.



7. **Select** the “Power Management” tab and uncheck the “Allow this device to wake the computer” check box.



8. Repeat the same steps for all entries in both the “Keyboards” and “Mice and other pointing devices” categories.

### **K350 Num Lock and Caps Lock indicators**

The K350 keyboard does not indicate the state of the Number (Num) lock and Capital (Caps) lock keys on the keyboard. Logitech uses on-screen Caps and Num Lock indicators. These messages will appear for approximately 2 seconds each time either key is pressed.

NOTE:

This feature requires that Logitech’s Mouse and Keyboard software (SetPoint) be installed on your computer.

#### **Num Lock Message**

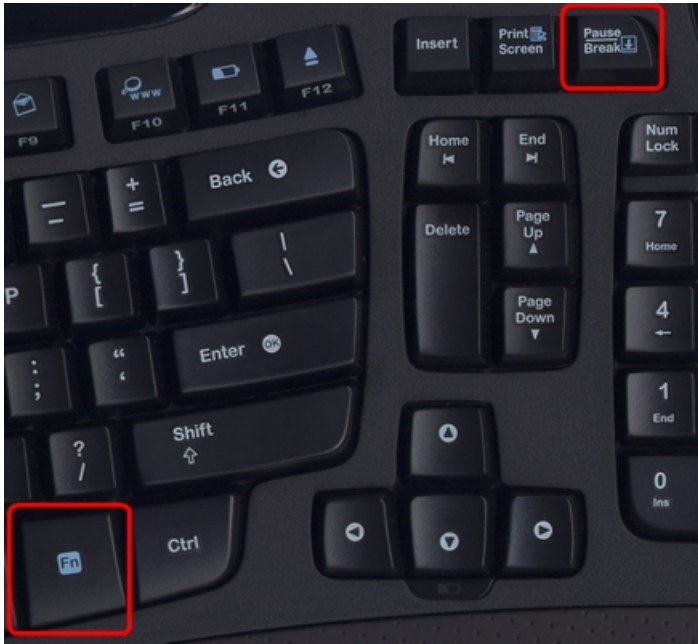
\_\_\_\_\_ OR \_\_\_\_\_

#### **Caps Lock Message**

\_\_\_\_\_ OR \_\_\_\_\_

#### **Locating my K350 Scroll Lock key**

Your K350 Scroll lock Function key is located just above the Num Lock Key on the numeric pad. To toggle Scroll lock off or on press the FN+Pause/Break key simultaneously.




**NOTE:**

If you have installed the Logitech Mouse and Keyboard software (SetPoint), the confirmation message Scroll Lock Off or Scroll Lock On will also be displayed for about 2 seconds in the lower portion of your monitor each time you toggle the key.

ScrollLockNotificationOFF.jpg

LX700\_Rcvr\_ScrollLockLEDOn.jpg

### Connecting an additional Logitech device to my K350 USB receiver

Your K350 Unifying USB receiver can be connected to up to six Logitech mice or keyboards with the Unifying logo .

To connect your additional Logitech mouse or keyboard to your Unifying USB receiver, do the following::

1. Download Logitech Mouse and Keyboard software (SetPoint) if you do not already have it installed. You can download SetPoint from the Wireless Keyboard K350 [Downloads Page](#).
2. Launch the Logitech Unifying Software (Start > Programs > Logitech > Unifying > Logitech Unifying Software).
3. The Welcome window will appear as shown below. Click Next:

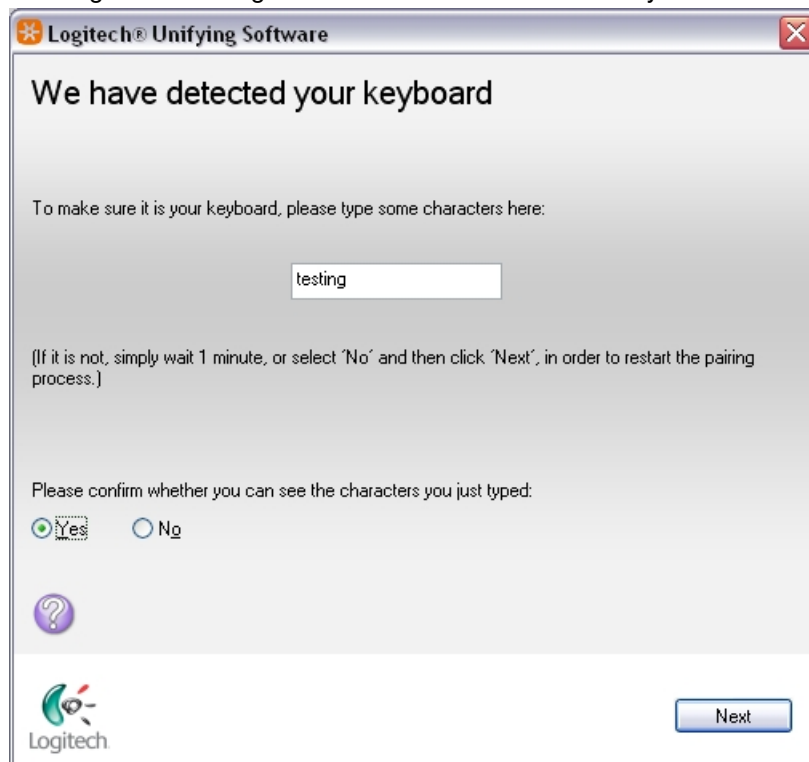




4. In order for the Unifying software to detect your device, you will need to turn it on. Follow the on-screen instructions (shown below) to turn your device on or off:



5. When your device is detected, you will see a confirmation message as shown below. Click Yes then Next.  
NOTE: In the following example, we are using a keyboard. You will see the device you are connecting. Type a test message in the designated field to ensure that the keyboard works.



6. Click Finish to exit the Logitech Unifying Software. Your device should now be connected.

### My K350 keyboard is not working

This problem is likely to be a lost connection. The connection between the keyboard and the USB receiver can be lost due to several reasons such as:

- Low batteries
- Moving the USB receiver from one USB port to another
- Moving the USB receiver to another computer
- Plugging the USB receiver into a USB hub or other unsupported device such as a KVM switch (your USB receiver must be plugged directly into your computer)

- Using your wireless keyboard on metal surfaces
- Radio frequency (RF) interference of more powerful wireless devices such as:
  - Wireless speakers
  - Computer power supplies
  - Monitors
  - Cellular telephones
  - Garage door openers

Eliminate any problem sources mentioned above that might be affecting your keyboard.

#### **Before Connecting your K350:**

1. Make sure you have fresh batteries in your K350. For battery replacement instructions, please see [Knowledge Base article 360023222514](#).
2. Make sure your keyboard is turned on. For instructions on turning your keyboard on and off, please see [Knowledge Base article 360023222514](#).
3. Make sure the USB receiver is directly and securely plugged into a working USB port on your computer.
4. Turn your computer on.
5. Follow the process below to reconnect your keyboard.

#### **Re-connecting your K350:**

To re-connect your K350, do the following:

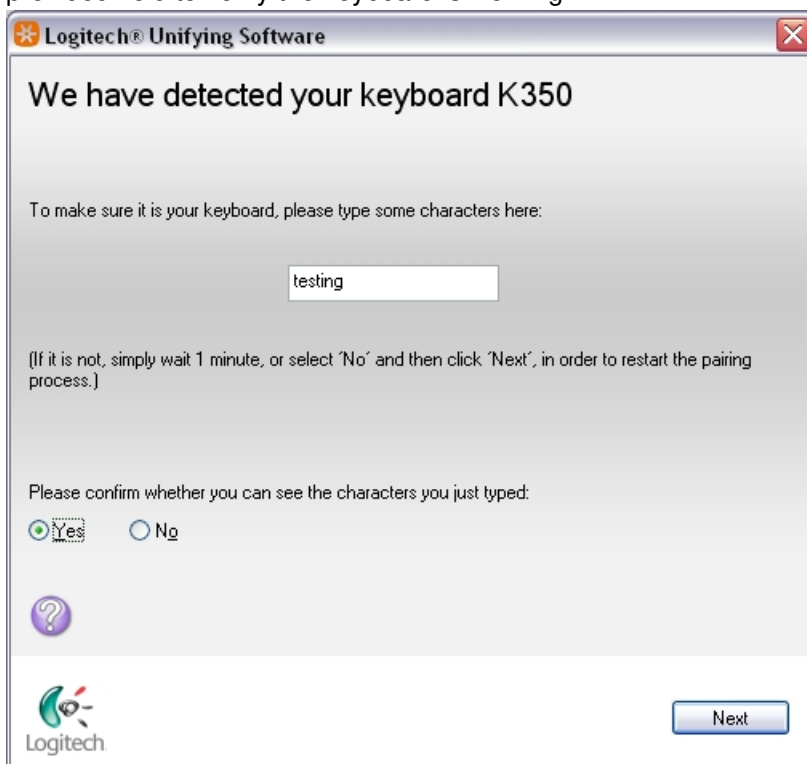
1. Download the correct version of Mouse and Keyboard software (SetPoint) from the K350 [Downloads Page](#).
2. Launch the Logitech Unifying Software (Start > Programs > Logitech > Unifying > Logitech Unifying Software).
3. The Logitech Unifying Software Welcome screen will appear (shown below). Click Next to continue.



4. Follow the on-screen instructions to turn your K350 off then on:



5. When your K350 is detected, you will see a confirmation message as shown below. Type a test message in the provided field to verify the keyboard is working.



6. Once you have confirmed the keyboard is working, check Yes, then click Next to continue.

7. Click Finish to exit the Logitech Unifying Software. Your K350 should now be connected.

### Additional Information

If the above solutions do not resolve your problem, consult [Knowledge Base article 12437](#) for instructions on contacting Logitech Technical Support.

### My K350 keyboard battery light does not stay on

This is normal behavior of the keyboard.

The green battery light on your K350 will come on for a few seconds to indicate the battery condition and then will go out. This happens when you power on the keyboard or when you replace the batteries. The battery light will go out after a few seconds to conserve battery power.



Using the F-keys on my K350 keyboard



Your K350 has a row of F-keys above the number keys. The F-keys have two states:

- **Normal:** F-keys in their normal state can be programmed to perform a variety of tasks. To use F-keys in the normal state, press the F-key you wish to use.
- **Enhanced:** The F-key will send a pre-programmed command (ie. Print) when the F-key is pressed simultaneously with the FN key (shown below).



The Enhanced functions can be changed in the Logitech Mouse and keyboard software (SetPoint) as described in [Knowledge Base article 360023222334](#).

Please see the following for a description of the Enhanced functions of the F-keys:



**Fn + F1** Launches document application

**Fn + F7** Launches Internet browser

**Fn + F2** Launches spreadsheet application

**Fn + F8** Launches instant message application

**Fn + F3** Launches calendar

**Fn + F9** Launches e-mail application

**Fn + F4 - F6** Program your favorite application, folder, or web site with a long, simultaneous press of Fn and the corresponding F4, F5, or F6 key (just like the presets of a car radio).





- Fn +F10** Launches Windows search
- Fn +Print Screen** Contextual menu
- Fn +F11** Battery status check
- Fn +Pause/Break** Scroll lock
- Fn +F12** Opens/closes CD-DVD tray

### **My K350 frequently loses connection**

If you have to constantly reconnect your keyboard, try the following:

- Keep other electrical devices at least 8 inches (20 cm) away from the USB Unifying receiver.
- Move the keyboard closer to the USB Unifying receiver.
- Use the USB receiver stand to move the USB Unifying receiver to different locations or positions (upright/vertical, rotating to a different angle, etc).
- Elevate the USB Unifying receiver in the USB stand by placing it on a book, CD ROM case or similar non-metallic item.

### **Additional Information**

The connection between the K350 keyboard and the USB Unifying receiver can be lost due to several reasons such as:

- Low batteries
- Moving the USB Unifying receiver from one USB port to another
- Moving the USB Unifying receiver to another computer
- Plugging the USB Unifying receiver into a USB hub or other unsupported device such as a KVM switch (your USB Unifying receiver must be plugged directly into your computer).
- Using your wireless keyboard on metal surfaces
- Radio frequency (RF) interference of more powerful wireless devices such as:
  - Wireless speakers
  - Computer power supplies
  - Monitors
  - Cellular telephones
  - Garage door openers

### **Customizing my K350 keyboard with Logitech software (SetPoint)**

This tutorial will show you how to use the following features in Logitech Mouse and Keyboard software (SetPoint):

- Customizing programmable keys
- Programming function keys
- Viewing battery status
- Disabling keys
- Using Unifying Software

---

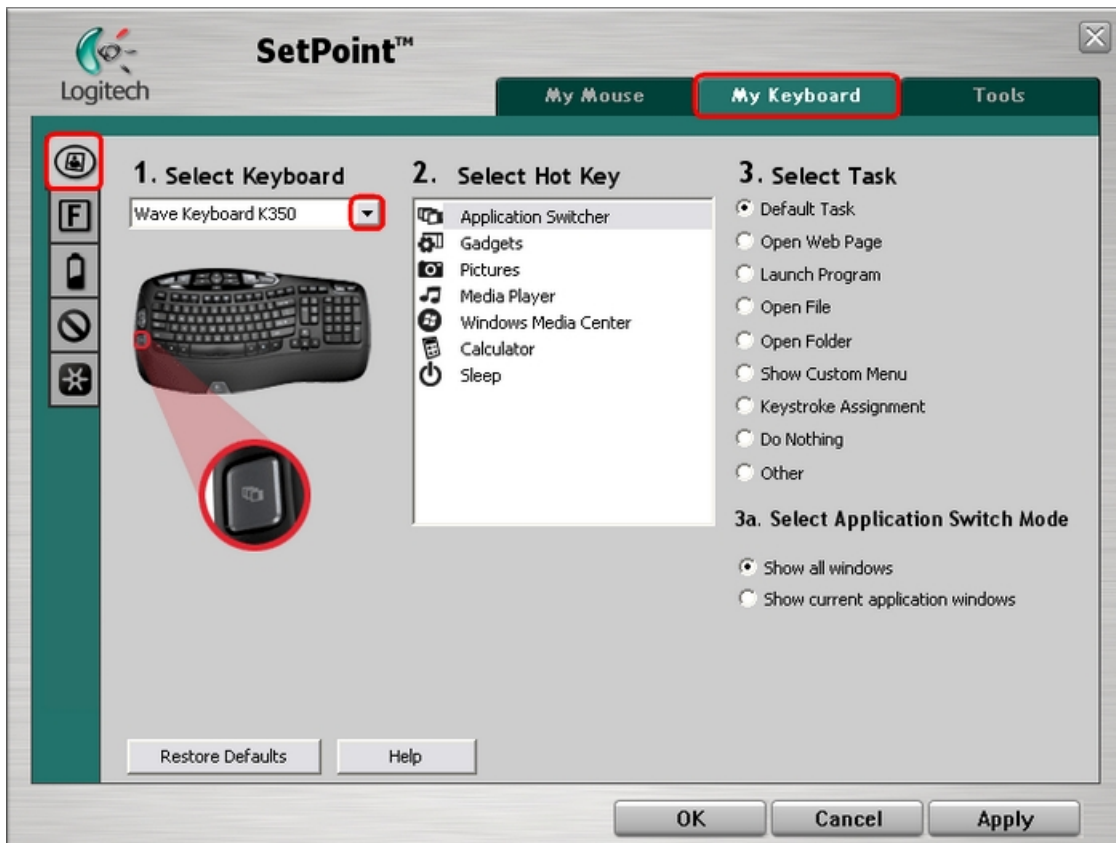
#### **Customizing programmable keys:**

To change key assignments, set up a desktop search tool, assign keystrokes and more, do the following:

1. Launch SetPoint (Start > Programs > Logitech > Mouse and Keyboard > Mouse and Keyboard Settings).

NOTE:

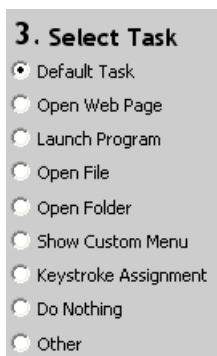
- If you do not have SetPoint installed, you can download it from the K350 [Downloads Page](#).
2. Once SetPoint opens, click the My Keyboard tab on the top, then select the K350 from the Select Keyboard drop-down menu (shown below):



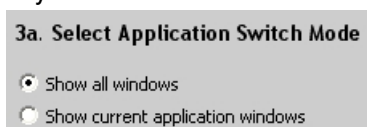
3. Select the key you wish to customize from the Select Hot Key field:



4. Select the task you wish to assign from the Select Task list. Click Help for detailed descriptions of these options:



5. Certain options may generate a sub-menu. In the example shown below, we selected the Application Switcher key. Select which window the key should display:



6. Click Apply, then OK to close SetPoint.

### Programming function keys:

The Function Keys, or F-Keys, are the keys on labelled F1 through F12 above the number keys.

Similar to the programmable keys discussed above, the F-Keys can also be programmed to perform certain

functions.

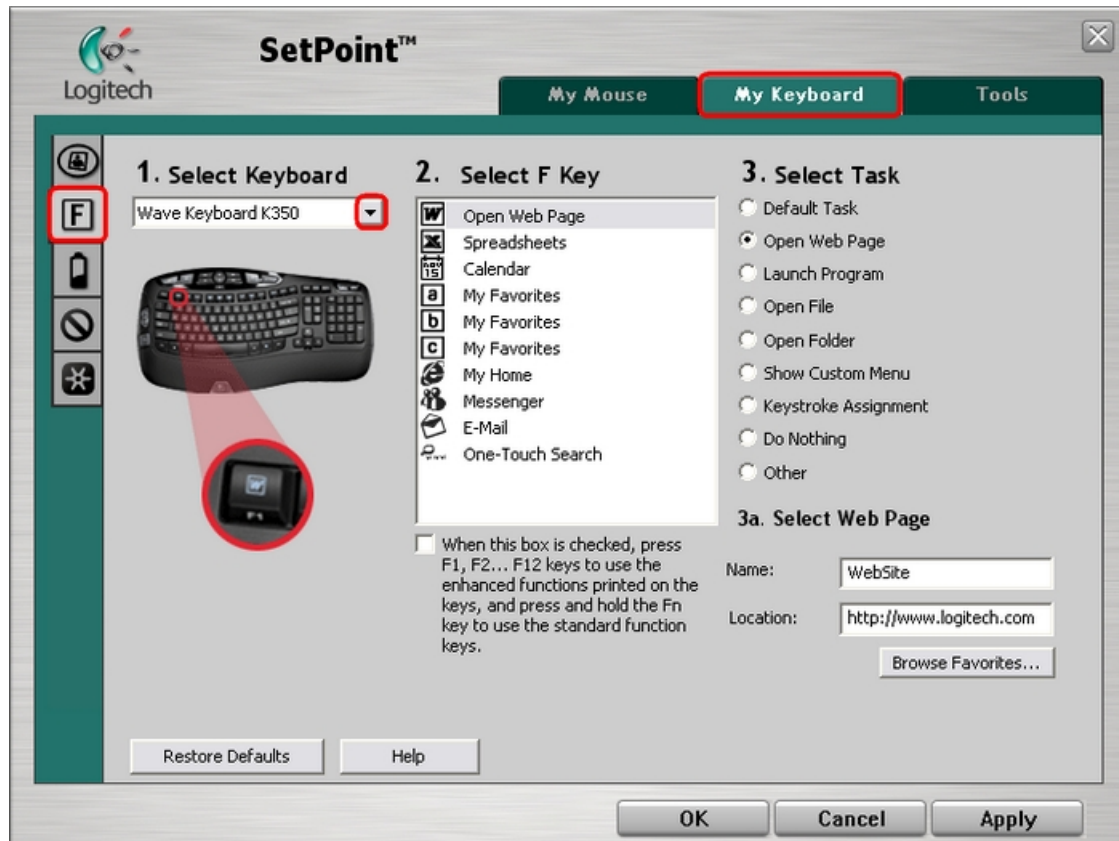
**NOTE:**

The F-keys have two possible functions- the enhanced functions printed on the F-keys and the standard functions described below. To use enhanced functions, check the checkbox shown below:

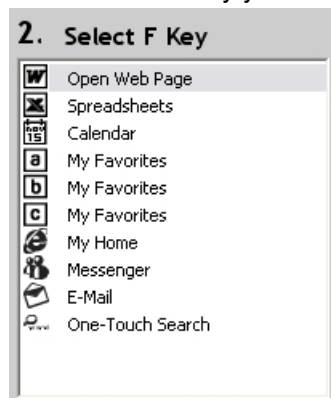
☐ When this box is checked, press F1, F2... F12 keys to use the enhanced functions printed on the keys, and press and hold the Fn key to use the standard function keys.

To program an F-key, please do the following:

1. Launch SetPoint and click the My Keyboard tab at the top.
2. Select the F-key Settings tab at the left side and choose the K350 keyboard from the Select Keyboard drop-down menu:



3. Select the F-key you wish to program from the Select F Key field:



4. Select the task you wish the F-key to perform from the Select Task field. Click Help for a detailed description of these options:

### 3. Select Task

- ☐ Default Task
- ☒ Open Web Page
- ☐ Launch Program
- ☐ Open File
- ☐ Open Folder
- ☐ Show Custom Menu
- ☐ Keystroke Assignment
- ☐ Do Nothing
- ☐ Other

5. Certain options may generate a sub-menu. In this example, we chose the Open Web Page option. Enter the URL you wish the key to open:

### 3a. Select Web Page

Name:

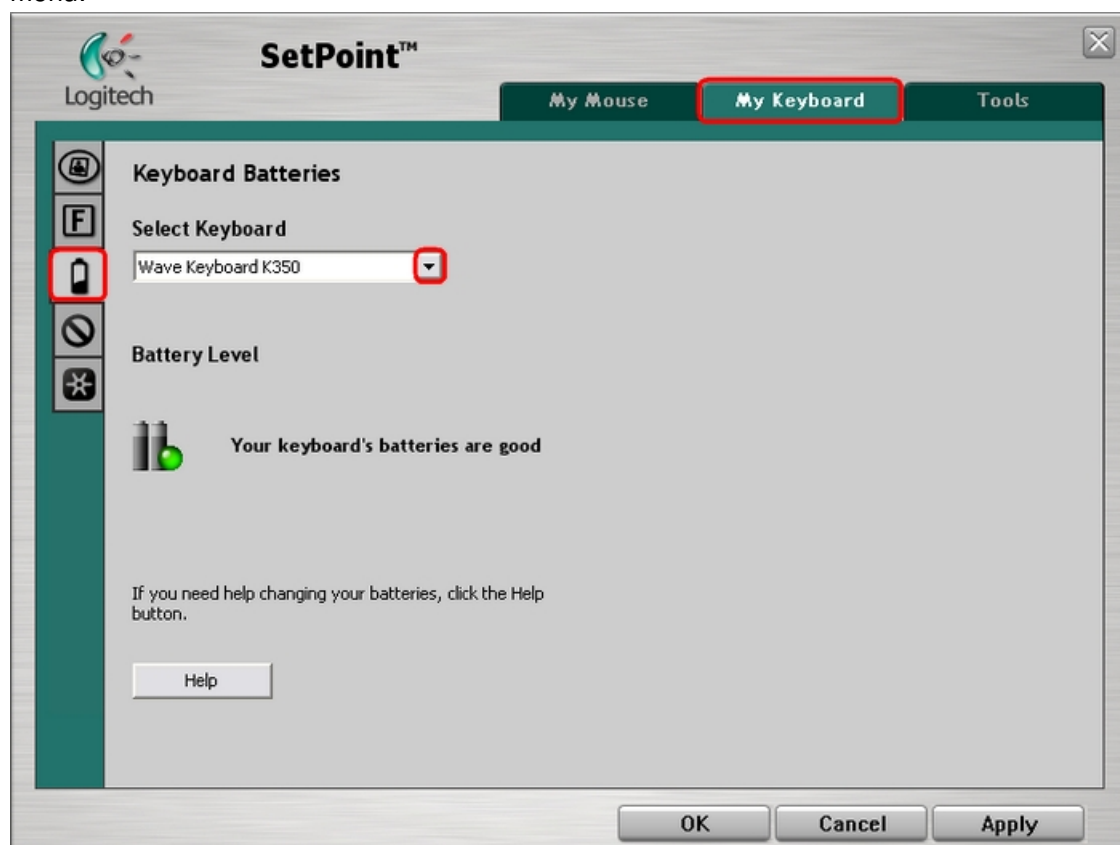
Location:

6. Click Apply, then OK to close SetPoint.

### Viewing battery status:

You can view your K350 battery status in SetPoint. To view the battery status, do the following:

1. Launch SetPoint and select the My Keyboard tab at the top.
2. Select the Keyboard Batteries tab at the left side and choose the K350 from the Select Keyboard drop-down menu:



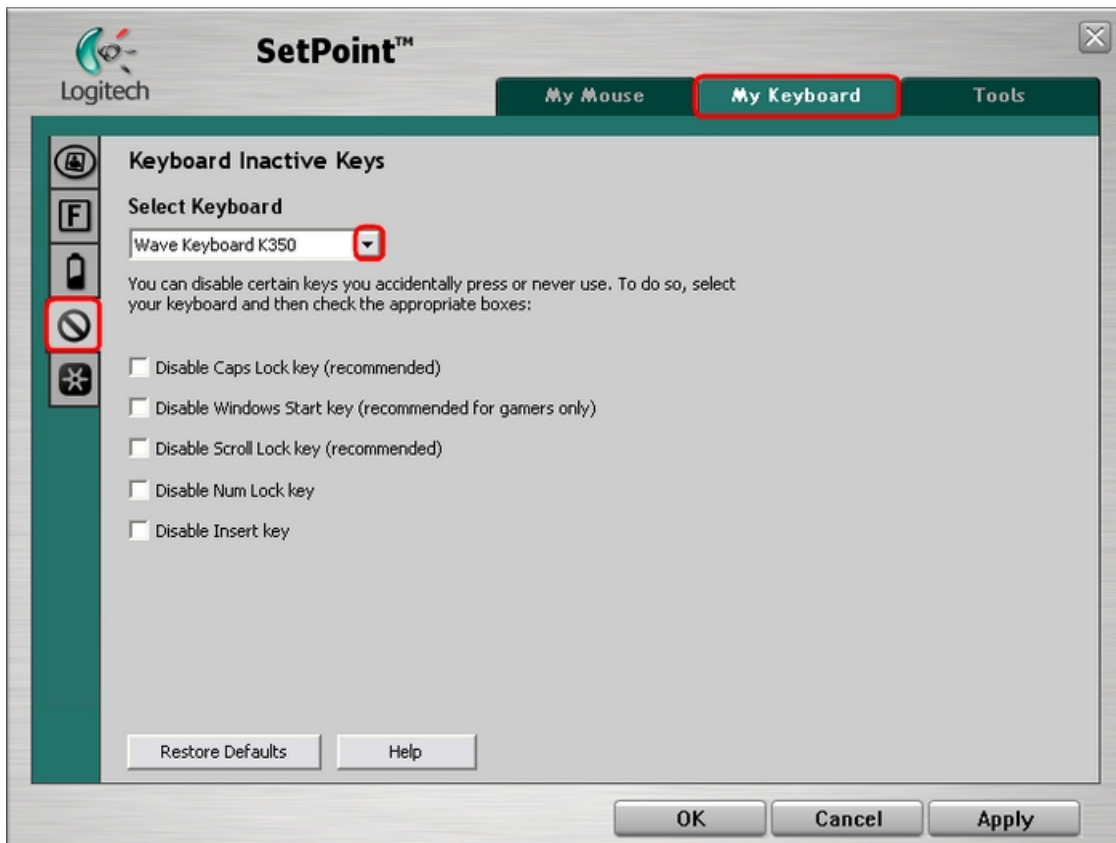
3. Verify the battery status for your keyboard.

4. Click OK to exit SetPoint.

### Disabling keys

You can disable keys you do not normally use:

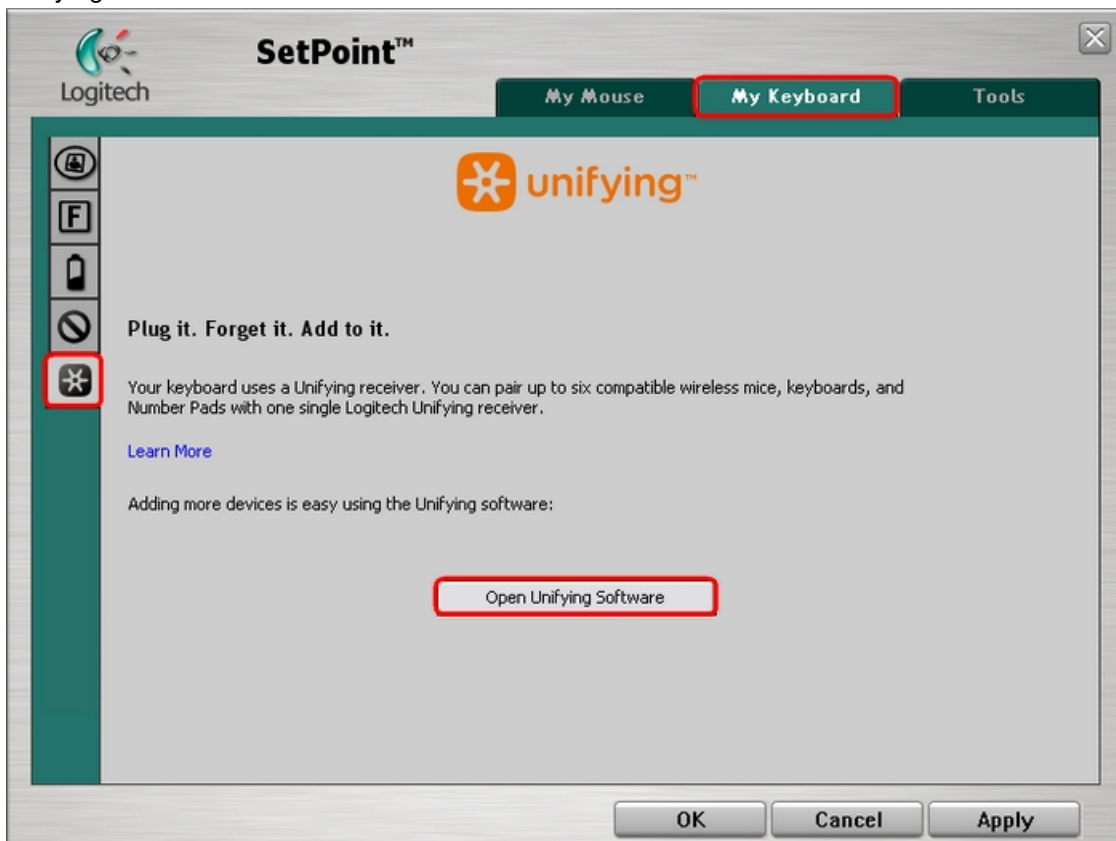
1. Launch SetPoint and click the My Keyboard tab at the top.
2. Select the Keyboard Inactive Key Settings tab at the left side and choose your K350 from the Select Keyboard drop-down menu:



3. Click on the checkboxes to disable keys you do not use. Click Help for detailed descriptions of these options.
4. Click Apply and OK to close SetPoint.

#### Using Unifying Software:

1. The K350 uses the new Unifying Software to connect additional devices. You can launch the associated Unifying Software from this tab.



2. For instructions on using the Unifying Software, please see [Knowledge Base article 36002338](#).

#### K350 battery life information

#### Battery Information:



Keyboard:

- Requires 2 AA alkaline batteries.
- Expected battery life is up to 36 months.

### Extending Battery Life

Although your keyboard has a standby mode to conserve power when not in use, there are other ways you can help extend the battery duration of your devices.

- Use only alkaline batteries. Non-alkaline batteries, such as NiMH, or NiCd, operate at a lower voltage and may negatively impact your battery life.

### Uninstalling my K350 software (SetPoint)

To uninstall SetPoint, first select your operating system:

- Windows XP
- Windows Vista
- Windows 7
- Windows 8
- Windows 10

#### Windows XP

1. Go to **Add or Remove Programs**:

- Start menu view: Start > Control Panel > Add/Remove Programs
- Classic Start menu view: Start > Settings > Control Panel > Add/Remove Programs

2. Open **Add or Remove Programs**.

3. Select Logitech SetPoint from the list.

4. Click **Change/Remove** and follow the on-screen instructions to uninstall SetPoint.

NOTE:

You may need to restart your computer to finish uninstalling.

#### Windows Vista

1. Go to **Uninstall or change a program**: Start menu view: Start > Control Panel > Uninstall a program

- Classic Start menu view: Start > Settings > Control Panel > Programs and Features

2. Select Logitech SetPoint from the list.

Vista uninstall SetPoint

3. Click **Uninstall** and follow the on-screen instructions to uninstall SetPoint.

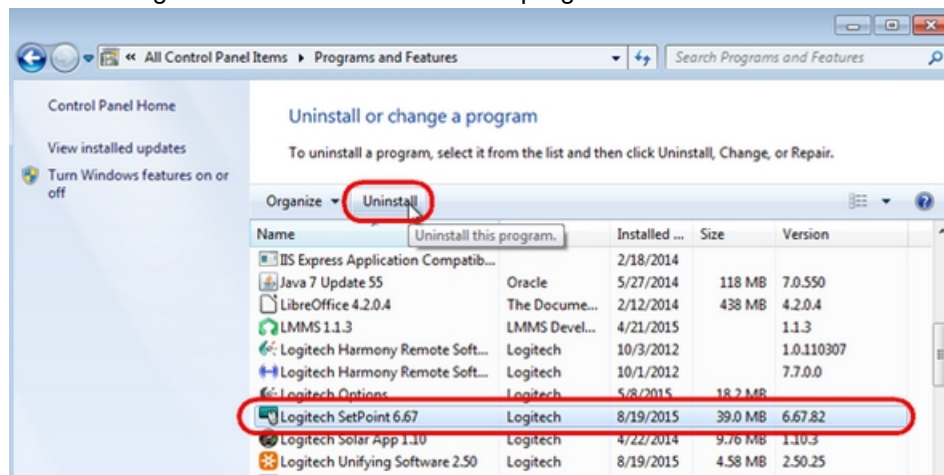
NOTE: You may need to restart your computer to finish uninstalling.

#### Windows 7Go to **Programs and Features**:

1. From the Start menu, click on Control Panel > Programs and Features

2. Open **Programs and Features**.

4. Select Logitech SetPoint from the list of programs.



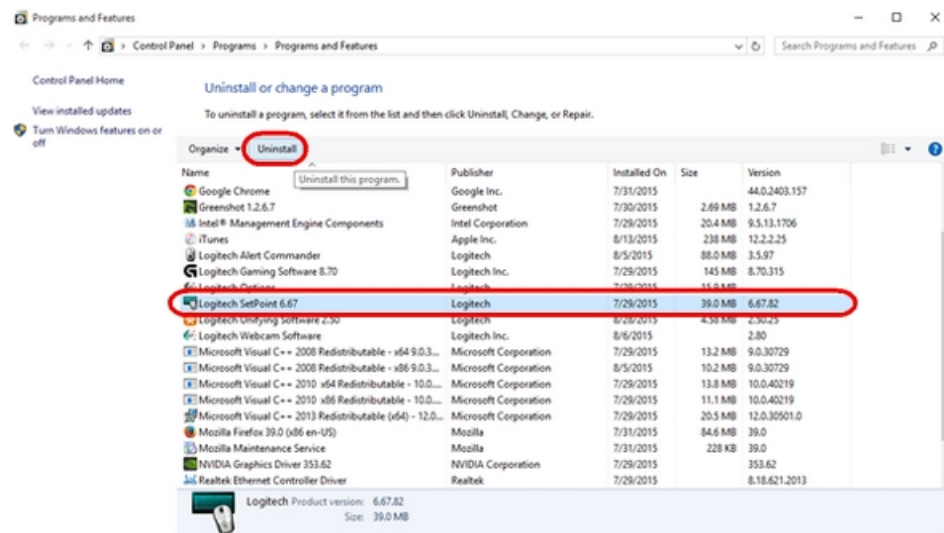
5. Click on **Uninstall** and follow the on-screen instructions to uninstall SetPoint.

NOTE: You may need to restart your computer to finish uninstalling.

#### Windows 8Go to **Programs and Features**:

6. From the Desktop, on the bottom left, right-click on the Windows logo, then click **Programs and Features**

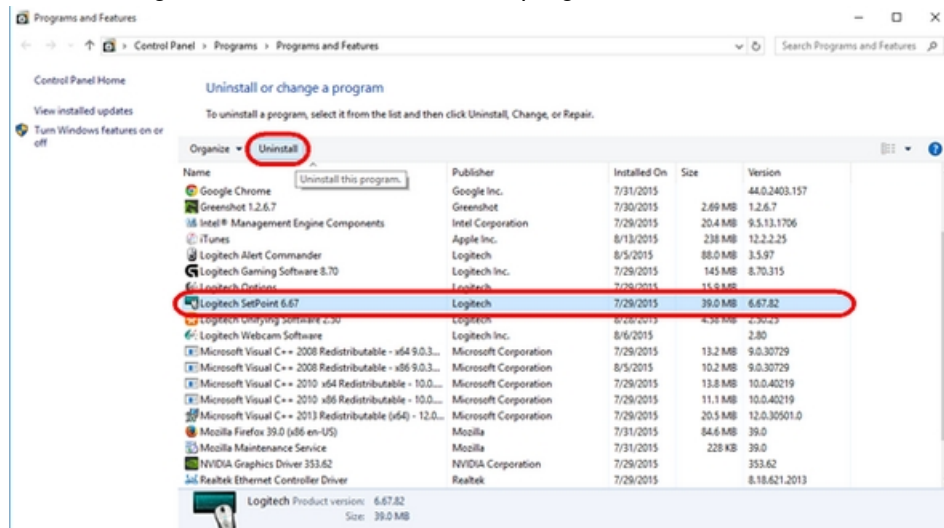
7. Select Logitech SetPoint from the list of programs.
8. Click on **Uninstall** and follow the on-screen instructions to uninstall SetPoint.



NOTE: You may need to restart your computer to finish uninstalling.

## Windows 10

1. Go to Programs and Features: Right-click on the Windows logo on the bottom left of the window, then click **Programs and Features**
2. Select Logitech SetPoint from the list of programs.



3. Click on **Uninstall** and follow the on-screen instructions to uninstall Setpoint.

NOTE: You may need to restart your computer to finish uninstalling.

## K350 compatibility with KVM switches and hubs

Manufacturers implement keyboard and mouse support in various, non-standard ways. KVM switches may affect the functionality of your K350.


Other third party devices that may interfere with communication between your K350 and your computer are:

- KVM switch boxes
- Port Replicators
- Docking Stations
- USB Hubs

## Using my K350 keyboard with a different USB receiver

Your K350 ships with the new Logitech Unifying USB receiver as shown below:



You can only connect your K350 with USB receivers that display the Unifying logo .  
You cannot connect your K350 to any Logitech USB receivers that do not display the Unifying logo.

NOTE: Although the device may be supported by the Unifying receiver, SetPoint and/or Logitech Control Center (LCC) support will depend on the specific product.

### **Supported operating systems for my K350**

Your K350 is supported by:

- Windows 7
- Windows XP
- Windows Vista

The K350 is not supported on Windows 98, Windows ME, Windows 2000, UNIX, Linux or Macintosh operating systems.

### **Changing the batteries in my K350**

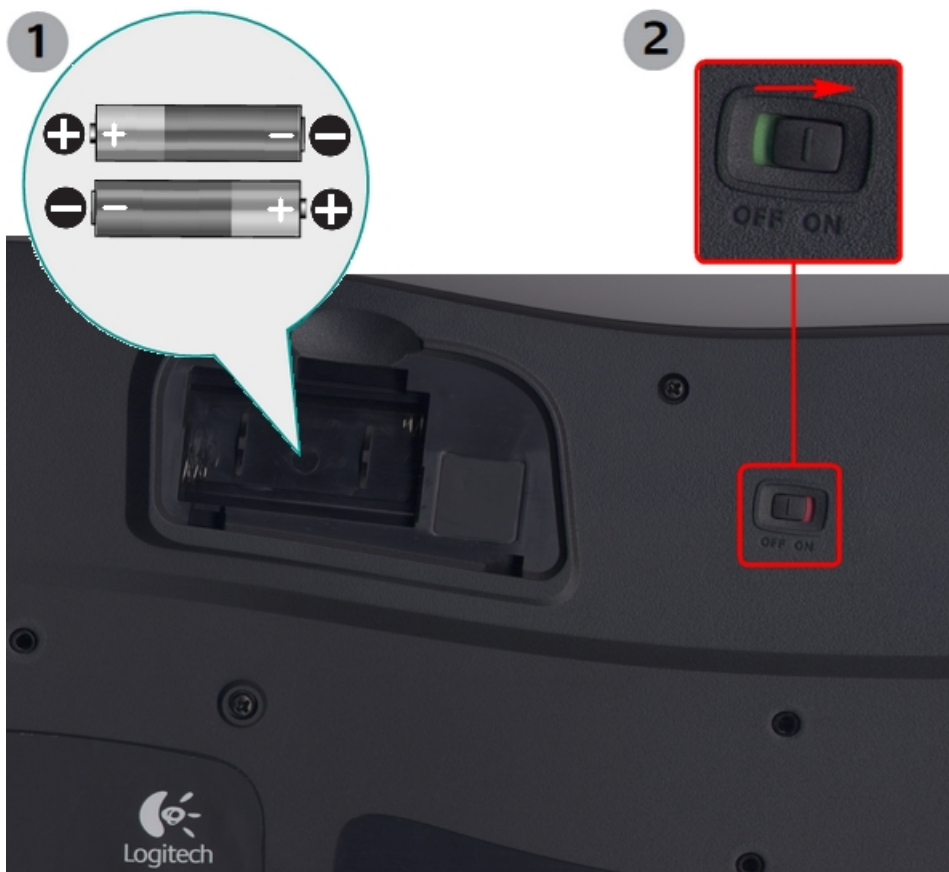
#### **Battery Requirements:**

Keyboard:

- Requires 2 AA alkaline batteries.
- Expected battery life is up to 36 months.

#### **Installing New Batteries**

Install the batteries for keyboard by making sure the batteries face the correct direction as shown in the image below.



### Battery Replacement Tips

- For best battery performance, always use quality alkaline batteries.
- When replacing batteries, make sure the replacement batteries are new and are within the manufacturer's expiration date.
- Do not mix old and new batteries.
- Do not mix batteries of different brands.

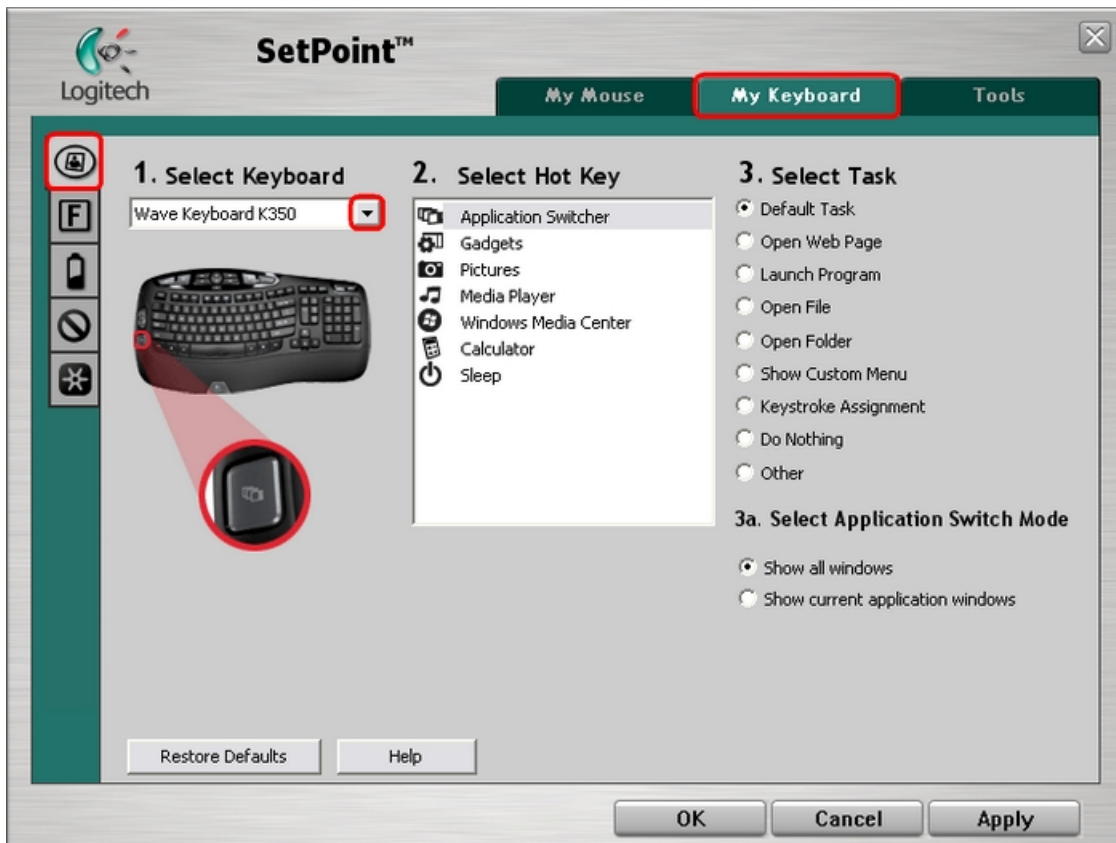
### My K350 hot keys do not work as programmed

To verify your hot key assignments, do the following:

1. Launch SetPoint (Start > Programs >Logitech >Mouse and Keyboard > Mouse and Keyboard Settings).

NOTE: If you do not have SetPoint installed, you can download it from the K350 [Downloads Page](#).

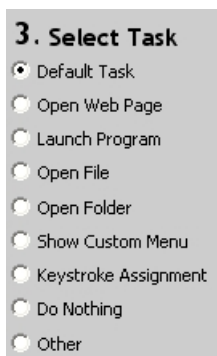
2. Once SetPoint opens, click the My Keyboard tab on the top, then select the K350 from the Select Keyboard drop-down menu (shown below):



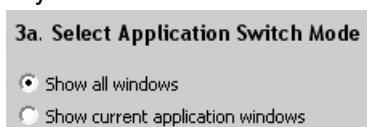
3. Select the key you wish to customize from the Select Hot Key field:



4. Select the task you wish to assign from the Select Task list. Click Help for detailed descriptions of these options:



5. Certain options may generate a sub-menu. In the example shown below, we selected the Application Switcher key. Select which window the key should display:



6. Click Apply, then OK to close SetPoint.

#### Additional Information:

If the above solutions do not resolve your problem, consult [Knowledge Base article 12437](#) for instructions on contacting Logitech Technical Support.



## Using the USB stand with your K350



The optional USB stand for your K350 keyboard serves the following purposes:

- Makes your computer's USB ports more easily accessible
- Varies the position and orientation of the USB receiver, thus reducing the possibility of interference.

To connect your USB stand, do the following:

1. Plug the male end into a USB port on your computer.
2. Plug your K350 receiver into the female end of the USB stand.

See the following diagram for details:



## K350 operating distance

In ideal situations, the K350 can operate up to 30 feet (10 meters) with the receiver in clear sight of the number pad.

If you are not getting this distance:

- Replace the batteries with a fresh set.
- Use the USB Receiver stand (included with your K350) to move the USB receiver to a line of sight or change its positioning.
- Move devices such as cell phones, radios, wireless routers, microwaves, and other devices that emit radio waves or could cause radio interference (RF) away from your work area.

To determine if your environment is causing shorter than expected ranges, try using your K350 in a different environment to see if the distance improves.

## Turning off my K350 keyboard

To turn your K350 keyboard off:

1. Flip the keyboard over and locate the power switch on the bottom.
2. Slide the power switch to the OFF position as shown below:





To turn your K350 keyboard on:

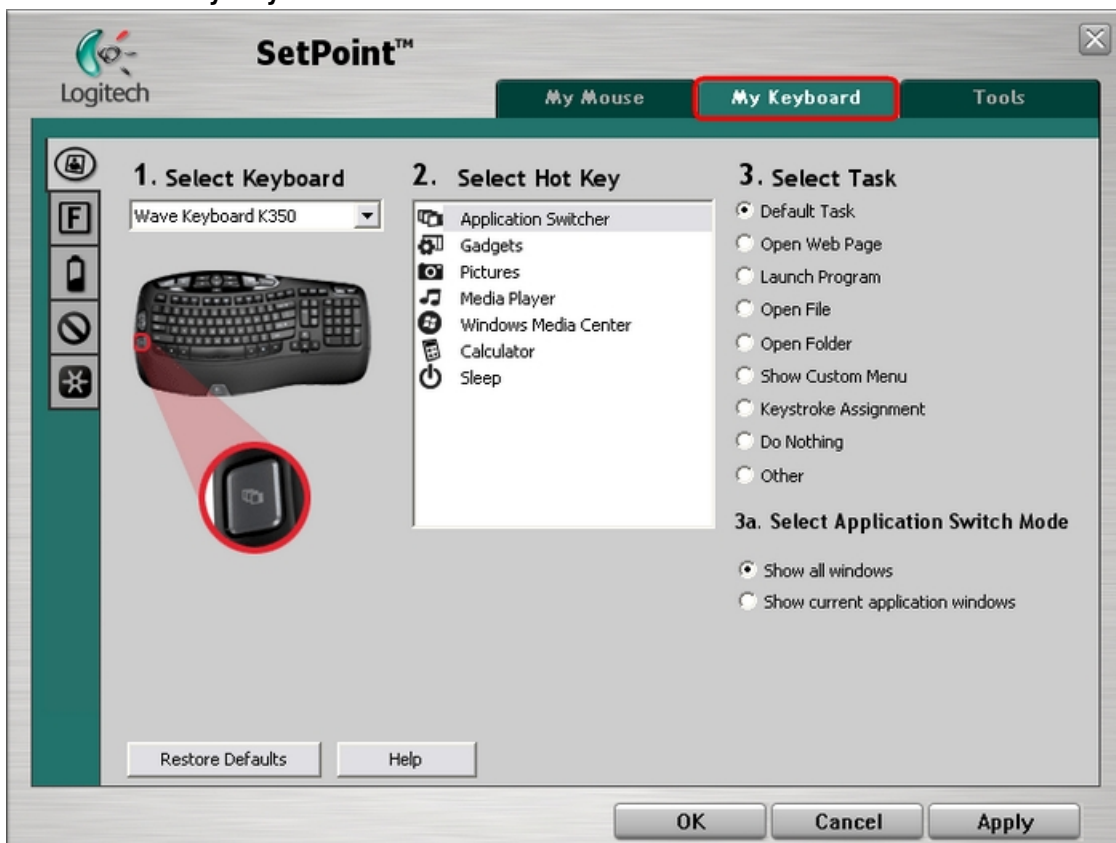
1. Flip the keyboard over and locate the power switch.
2. Slide the power switch to the ON position as shown below:



### My K350 cannot be customized using Logitech software (SetPoint)

Normally, you should be able to customize your K350 keyboard using the My Keyboard tab in Logitech's Mouse and Keyboard software (SetPoint). If this tab is not visible, you will need to reinstall SetPoint.

#### SetPoint with My Keyboard Tab



#### SetPoint without My Keyboard Tab

SP wout Mse Tab

To uninstall SetPoint:

[Windows XP](#)

[Windows Vista](#)

#### Windows XP

1. Go to Add or Remove Programs:
  - Start menu view: Start > Control Panel > Add/Remove Programs

– Classic start menu view: Start > Settings >Control Panel > Add/Remove Programs

2. Open Add or Remove Programs

3. Select Logitech SetPoint from the list of programs displayed.

---

4. Click the Change / Remove button and follow the on-screen instructions to uninstall SetPoint.

5. Download and install the latest version of SetPoint from the K350 [Downloads Page](#).

NOTE: You may need to reboot your system after SetPoint has been installed.

After your system restarts, open SetPoint to verify that the My Keyboard tab is now available.

### Windows Vista

1. Go to Uninstall a program:

– Start menu view: Start > Control Panel > Uninstall a program

– Classic start menu view: Start > Settings >Control Panel > Programs and Features >

3. Select Logitech SetPoint from the list of programs displayed.

Vista uninstall SetPoint

4. Click the Uninstall button highlighted above and follow the on-screen instructions to uninstall SetPoint.

5. Download and install the latest version of SetPoint from the K350 [Downloads Page](#).

NOTE: You may need to reboot your system after SetPoint has been installed.

After your system restarts, open SetPoint to verify that the My Keyboard tab is now available.

### Additional Information

1. If the My Keyboard tab is still missing:

2. Exit SetPoint by right-clicking on the SetPoint icon in the system tray. The system tray is located in the bottom right corner of the screen next to your clock.

Image

3. Select Exit.

4. Click on the Windows Start button.

5. Choose Run.

6. Type `%windir%` in the Run dialog box (shown below).

windir

7. Double-click on the System32 folder to open it.

8. Double-click the drivers folder.

9. Rename the file wdf01000.sys to wdf01000.bak.

10. Re-install SetPoint.

**WARNING:** Before rebooting, check if the wdf01000.sys file is present. Rebooting without this file may prevent some of your hardware, including mice and keyboards, from working properly.

11. If the wdf01000.sys file is not present, immediately rename wdf01000.bak back to wdf01000.sys.

12. Reboot the computer.

13. After your system restarts, open SetPoint to verify that the My Keyboard tab is present.

14. If the above solutions do not resolve your problem, consult [Knowledge Base article 12437](#) for instructions on contacting Logitech Technical Support.

### Num Lock disabled after Windows 10 starts

By default, the Num Lock on your keyboard is disabled each time Windows 10 boots up after a shutdown or restart.

To configure your operating system so that Num Lock stays on during startup, please contact professional support for your operating system. This requires advanced changes that need to be done under the guidance of a professional technician.

### FAQ'S

#### How to change the language?

Please download the language pack from logitech website, and extract the file. Then copy the extracted file to

C:\Program Files\Logitech\SetPointP\Lang.

### **How to change the default application?**

Please go to Control Panel->Default Programs->Associate a file type or protocol with a program, select the file type you want to open with your favorite application, and then click Change Program... button.

### **What is Logitech Setpoint?**

Logitech SetPoint is a software that can be used to customize your keyboard settings. You can use it to change keyboard settings such as volume control or launch applications by using hotkeys on your keyboard. You can also customize your keyboard by using Logitech SetPoint. For more information about Logitech SetPoint, please visit <http://www.logitech.com/support/keyboards/setpoint>

### **What is the point of a wave keyboard?**

The full-feature keyboard aims at providing a relaxing, intuitive, and zero-strain typing experience, boosting typing productivity without the wrist-pain and with minimal muscle activity. The first thing you notice when you see the ERGO K860 is its camel-hump, or as Logitech calls it, the WAVE.

### **Does Logitech K350 have backlight?**

It also offers better ergonomics since it has incline settings and it's also wireless. On the other hand, the Adesso has backlighting, which the Logitech lacks.

### **Is a Wave keyboard ergonomic?**

The Wave is no ergonomic powerhouse, but it's tough to find anything not to like about this friendly and affordable keyboard.

### **How do I connect my Logitech wireless keyboard?**

Go to Bluetooth settings on your device and select Logitech Bluetooth® Multi-Device Keyboard K380 when it appears in the list of available Bluetooth devices. Follow the onscreen instructions to complete the pairing. Upon pairing, the status LED on the keyboard stops blinking and remains steady for 10 seconds.

### **Where is power button on Logitech wireless keyboard?**

The power switch is either located on the bottom of the keyboard or above the keys. A green LED light should turn on when the keyboard power is on.

### **Why is my Logitech Bluetooth keyboard not working?**

Low batteries are one of the most common causes for a Logitech keyboard to suddenly stop working. You can fix this issue by turning the keyboard off, flipping the keyboard over and removing the battery compartment. Replace the batteries inside and then turn the keyboard back on.

### **Do you need to turn off Logitech wireless keyboard?**

You don't have to switch the keyboard or the mouse off. Although there is a switch on each device. The batteries last a long time (with my usage).

### **Why is my Bluetooth keyboard not typing?**

If your Bluetooth keyboard will not pair with your computer, even though the keyboard normally connects, the first thing to do is replace the batteries in the keyboard. If your keyboard uses another power source, ensure the power source is providing power to the device.

### **What does red light mean on Logitech keyboard?**

to be charged

Green is regular level, red means it needs to be charged, the rest of the time during use, it shouldn't illuminate at all. If you're using the Logitech Options software, it should tell you the power level as well. Answered by cj23 1 year ago.



Logitech

Logitech K350 Wireless Wave Ergonomic Keyboard

[www://logitech.com/](http://www.logitech.com/)

## Documents / Resources



[logitech K350 Wireless Wave Ergonomic Keyboard](#) [pdf] User Guide  
K350, Wireless Wave Ergonomic Keyboard with Unifying Technology