

logitech Harmony Configuration for Velbus Instructions

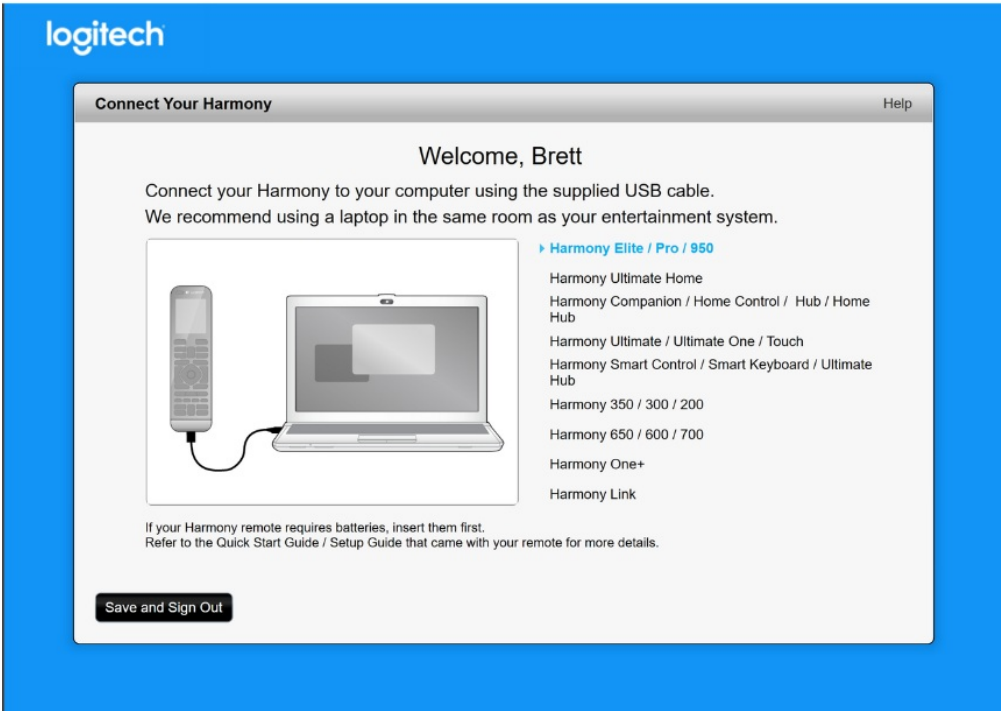
[Home](#) » [Logitech](#) » logitech Harmony Configuration for Velbus Instructions 

Contents

- 1 logitech Harmony Configuration for Velbus
- 2 Instructions
- 3 Documents / Resources
- 4 Related Posts

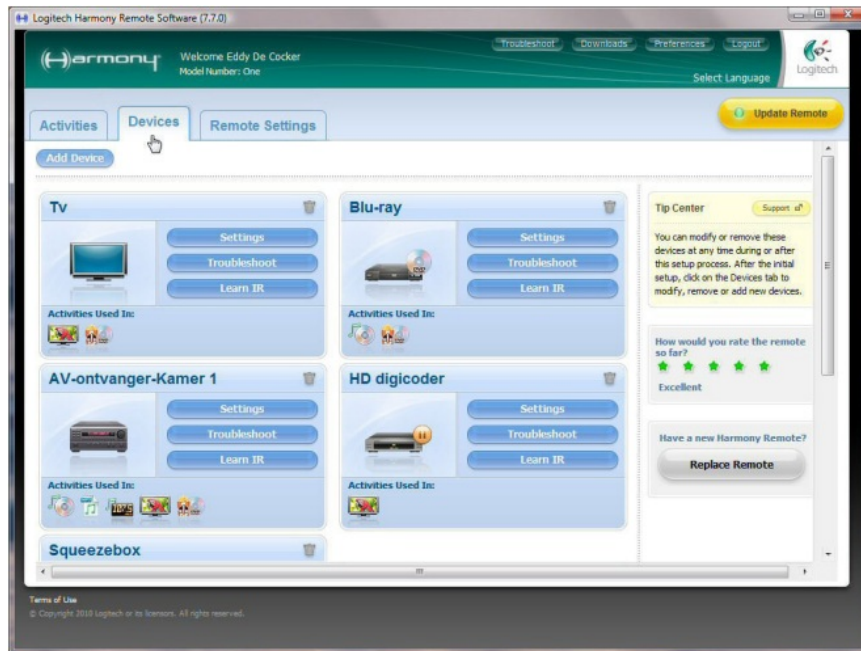


logitech Harmony Configuration for Velbus

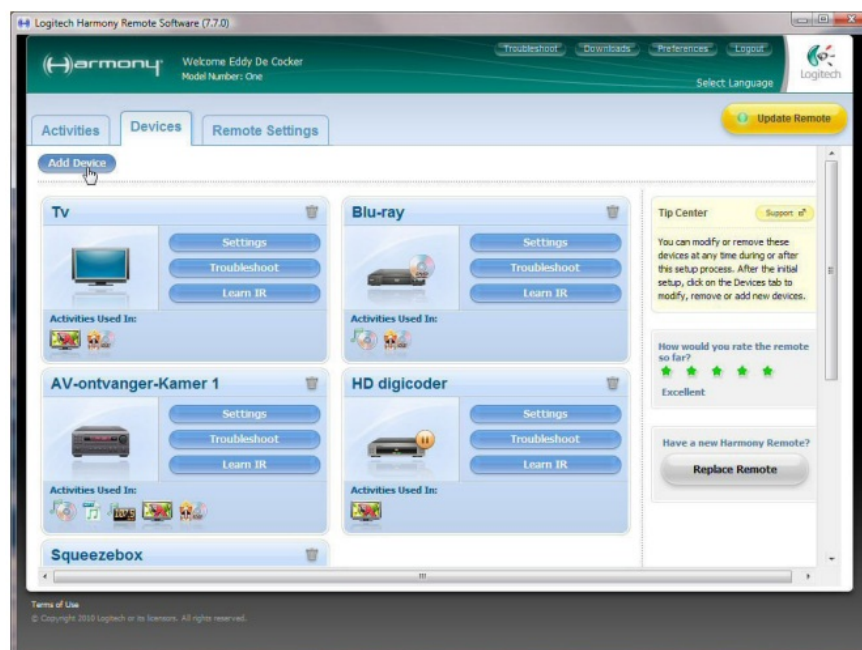


Instructions

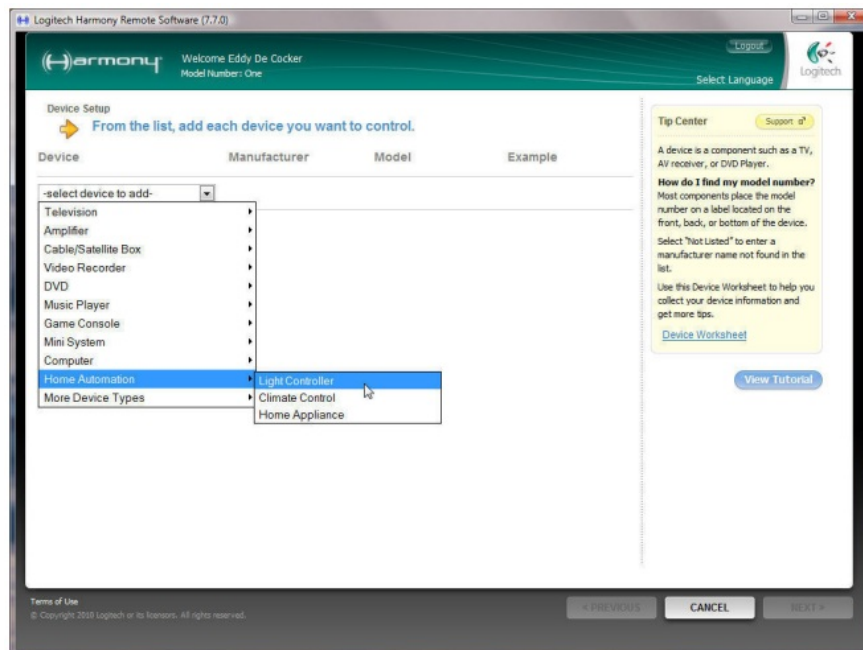
Start the Logitech Harmony™ configuration software and click on “Devices”.



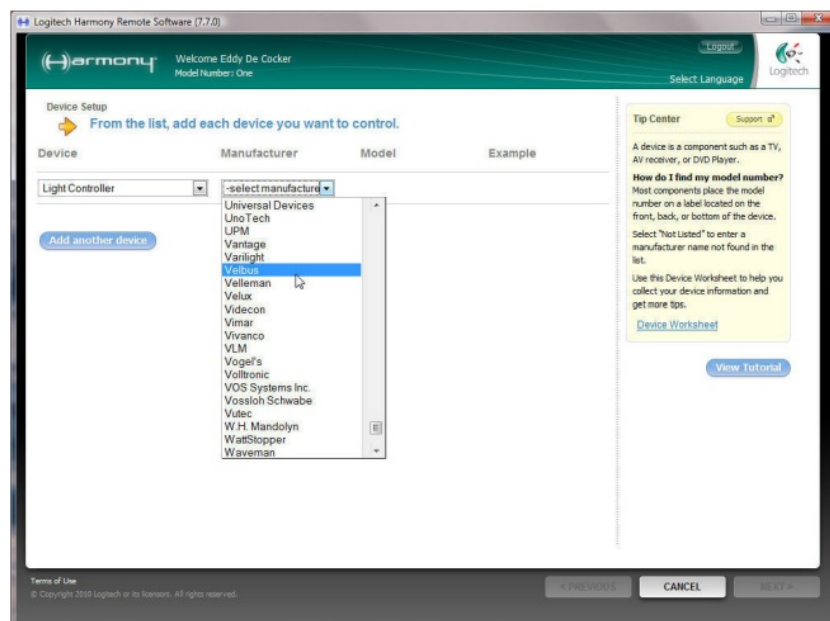
Click on “Add Device”.



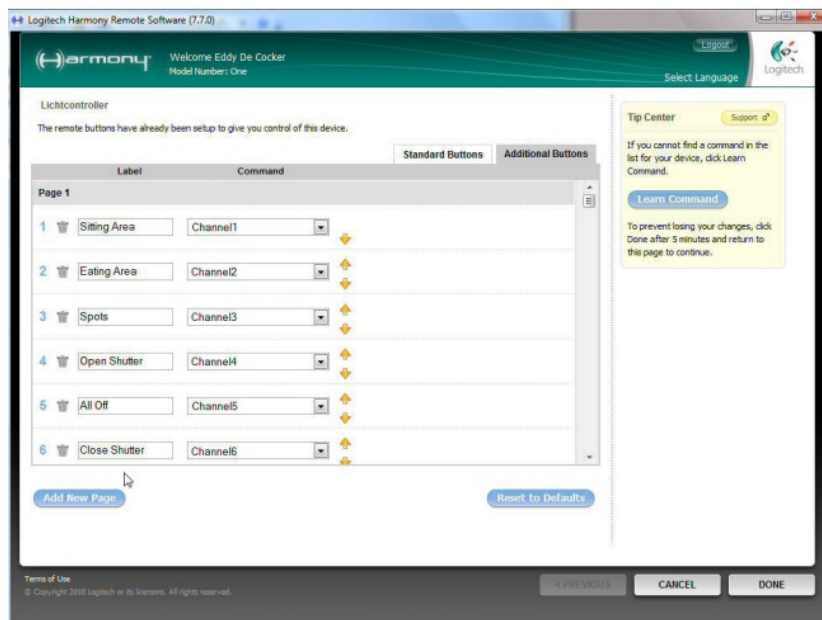
Select “Home Automation” and then select “Light Controller”.



Select manufacturer "Velbus".



Add labels to the buttons; remove unused channels (if any) and change the order of the buttons to match your own preferences.




Complete the wizard and update the remote control.

Tip: Buttons that are linked to the LCD only transmit the Infrared code briefly. Sometimes a button with a longer response time (1, 2 or 3 seconds) is needed or one wants to control a dimmer with it. To achieve this, the code can be linked to a standard button or an action for lighting control should be added. For this last method all buttons must be redefined as described in “adding devices”. Now all buttons will transmit IR codes as long as the button is operated.

“(Trademark) is either a registered trademark or trademark of Logitech in the United States and/or other countries. All other trademarks are the property of their respective owners.”

Documents / Resources

	<p>logitech Harmony Configuration for Velbus [pdf] Instructions Harmony Configuration for Velbus, Harmony Configuration, Velbus Harmony Configuration, Harmony</p>
---	---