



logitech G915 Wireless RGB Mechanical Gaming Keyboard User Guide

[Home](#) » [Logitech](#) » logitech G915 Wireless RGB Mechanical Gaming Keyboard User Guide 

Contents

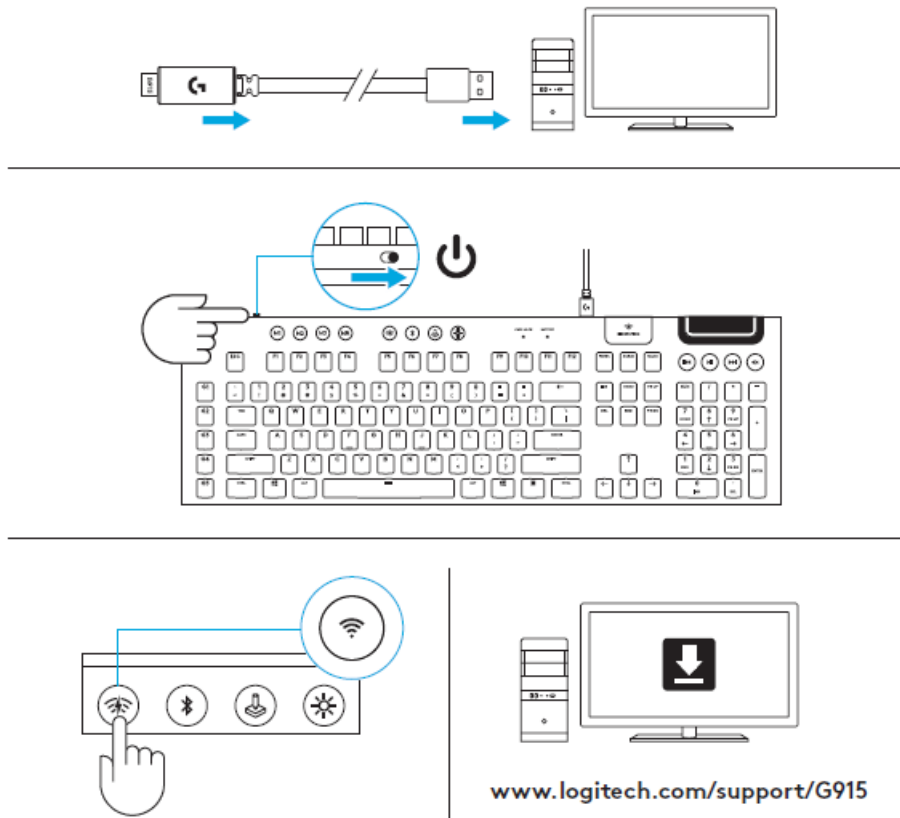
- 1 logitech G915 Wireless RGB Mechanical Gaming Keyboard
- 2 LIGHTSPEED CONNECTION
- 3 BLUETOOTH® CONNECTION
- 4 CHARGING
- 5 KEYBOARD FEATURES
- 6 KEYBOARD FEATURES — LIGHTING FUNCTIONS
- 7 KEYBOARD FEATURES — G-KEYS
- 8 KEYBOARD FEATURES — MEDIA CONTROLS
- 9 KEYBOARD FEATURES — BATTERY INDICATOR
- 10 KEYBOARD FEATURES — WIRELESS CONTROLS
- 11 KEYBOARD FEATURES — BLUETOOTH®
- 12 KEY CAP REMOVAL + REPLACEMENT
- 13 Documents / Resources
 - 13.1 References
- 14 Related Posts

logitech

logitech G915 Wireless RGB Mechanical Gaming Keyboard

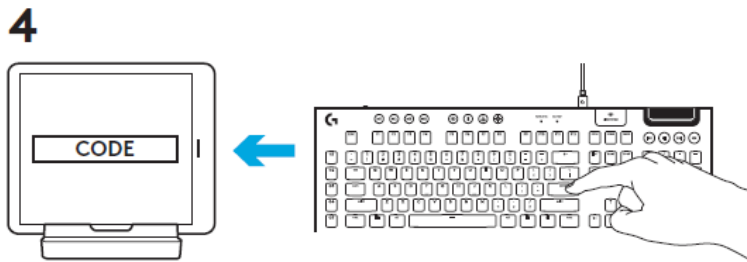
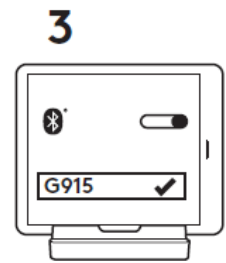
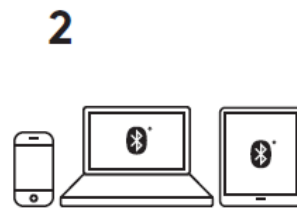
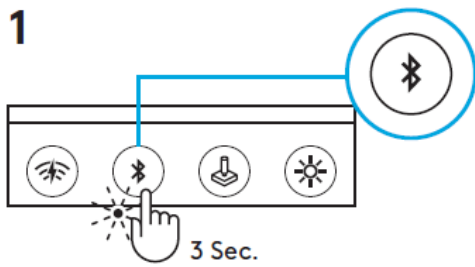


LIGHTSPEED CONNECTION

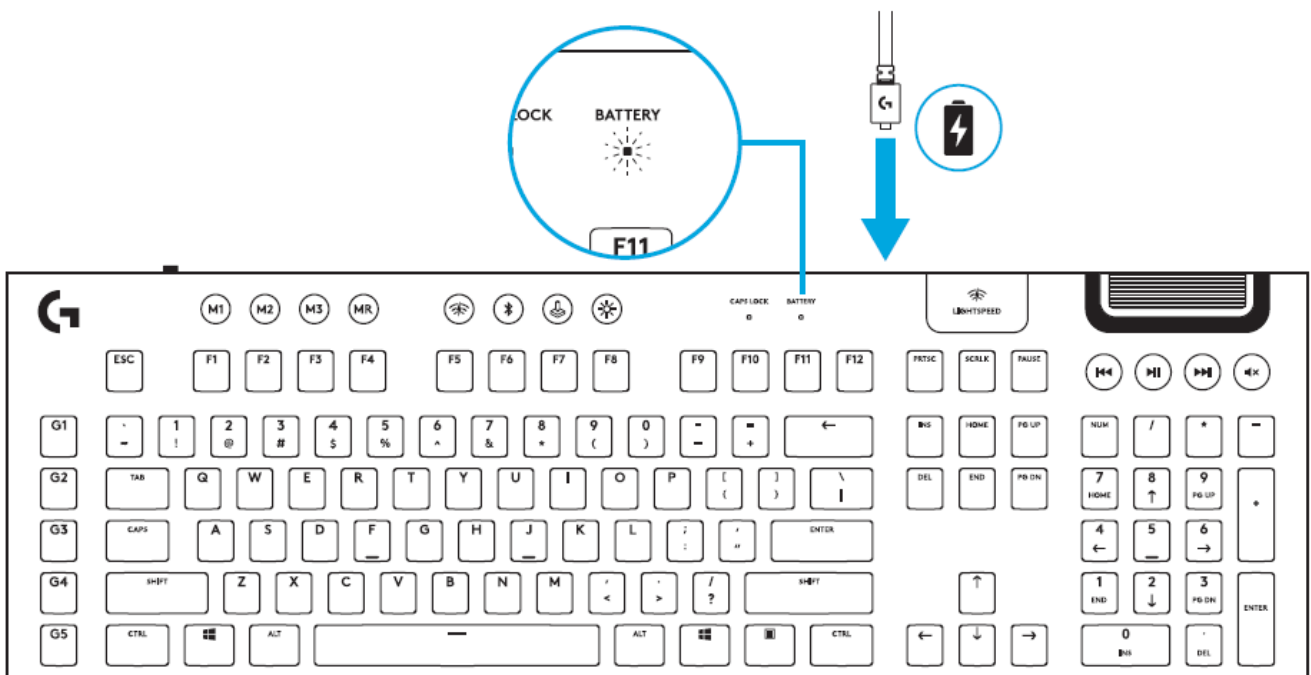


www.logitech.com/support/G915

BLUETOOTH® CONNECTION

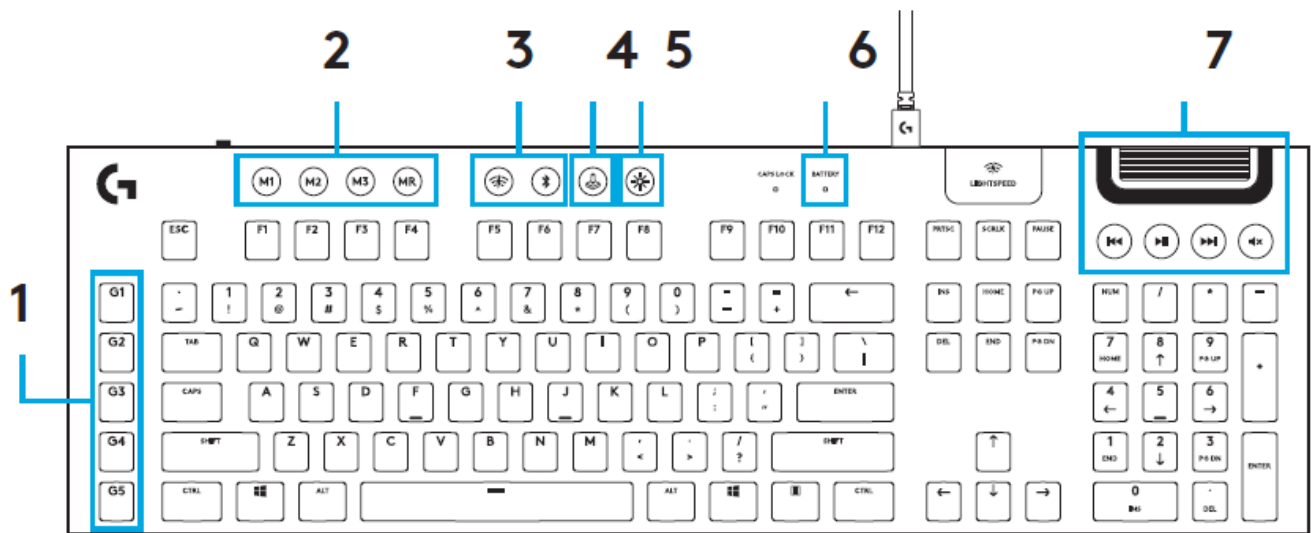


CHARGING



KEYBOARD FEATURES

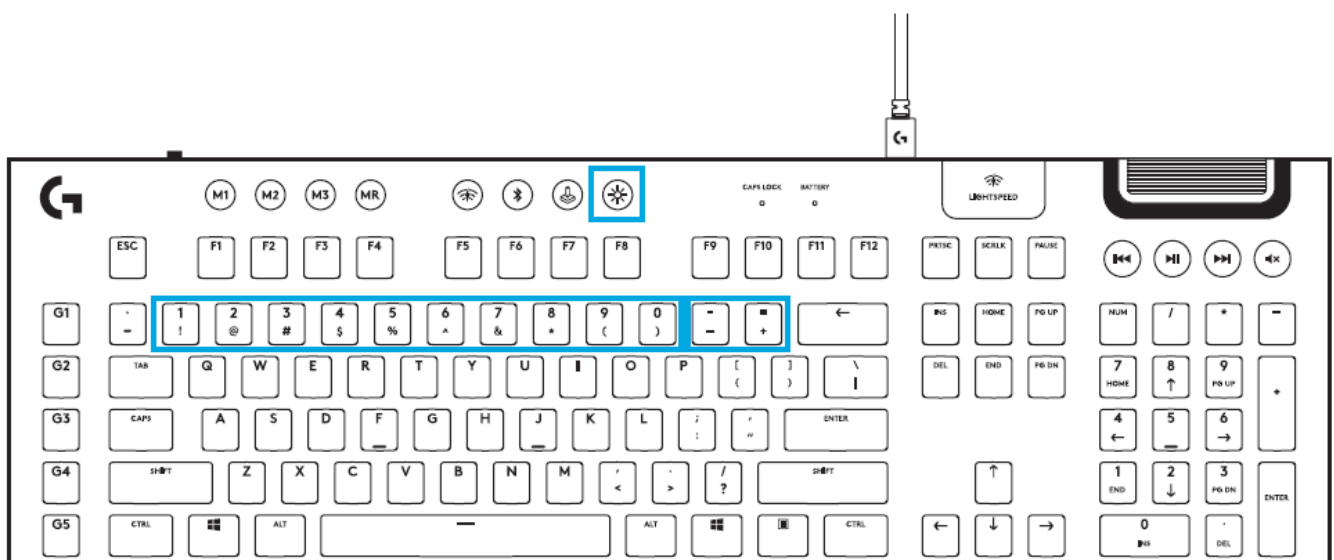
1. G-Keys
2. Mode Switches
3. LIGHTSPEED and Bluetooth
4. Game Mode
5. Brightness
3. Battery Light
4. Media Controls



KEYBOARD FEATURES — LIGHTING FUNCTIONS

In addition to the lighting features available through G HUB software, G915 has onboard lighting effects. To select these effects, press and hold the Brightness button while pressing the keyboard number keys to select an effect:

- Brightness + key 1: Colorwave (left to right)
- Brightness + key 2: Colorwave (right to left)
- Brightness + key 3: Colorwave (center out)
- Brightness + key 4: Colorwave (bottom up)
- Brightness + key 5: Color cycle
- Brightness + key 6: Ripple
- Brightness + key 7: Breathing
- Brightness + key 8: User-stored lighting
- Brightness + key 9: User-stored lighting
- Brightness + key 0: Cyan blue
- Brightness + key -: Decreases effect speed
- Brightness + key +: Increased effect speed

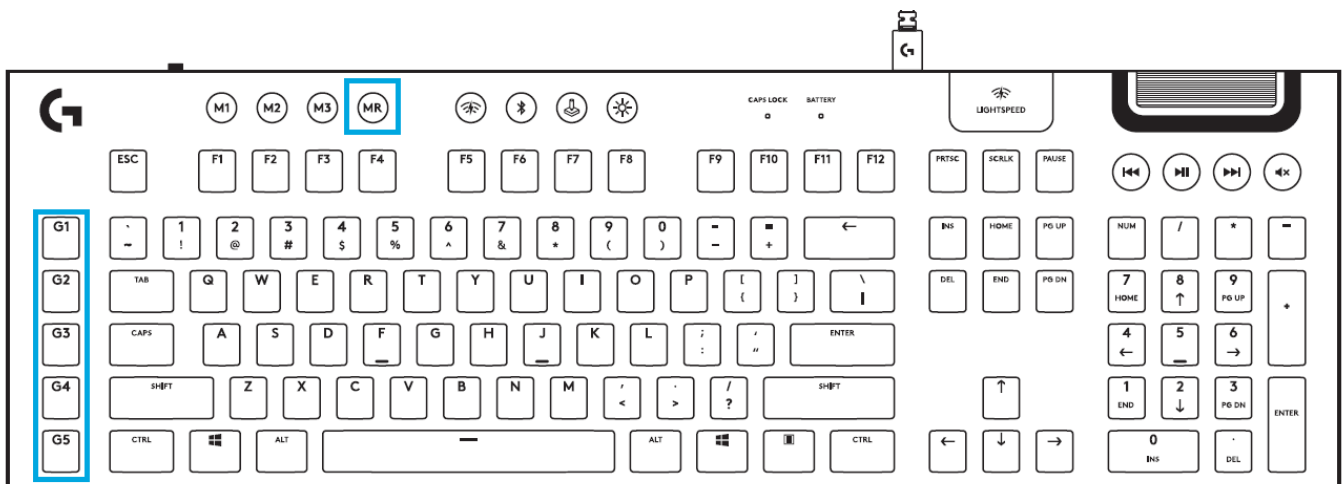


User-stored effects are saved to the keyboard by G HUB software.

KEYBOARD FEATURES — G-KEYS

- 5 programmable G-keys and three M-keys provide up to 15 unique functions per game.
- Customize the G-keys using Logitech G HUB Software.
- To record a macro:
 1. Press the MR key
 2. Press a G-key.
 3. Type the keys to be recorded.
 4. Press the MR key.
 - To record a second macro to the same G-key, press M2 and repeat steps 1–4.
 - For a third macro, press M3 and repeat steps 1–4.

Download and install Logitech G HUB software from logitechG.com/GHUB



GAME MODE BUTTON

This button disables the standard Windows key and Menu key to prevent the Windows Start menu from activating during a game, which might disrupt play. The game mode LED is lit during game mode.



KEYBOARD BACK — LIGHTING

Adjust keyboard brightness by cycling the keyboard brightness button.



ONBOARD MEMORY

Three onboard profiles can be saved to G915. The profiles are downloaded into the G915 through G HUB software, and are accessed by selecting M1, M2, or M3 when the keyboard is in Onboard mode (selected

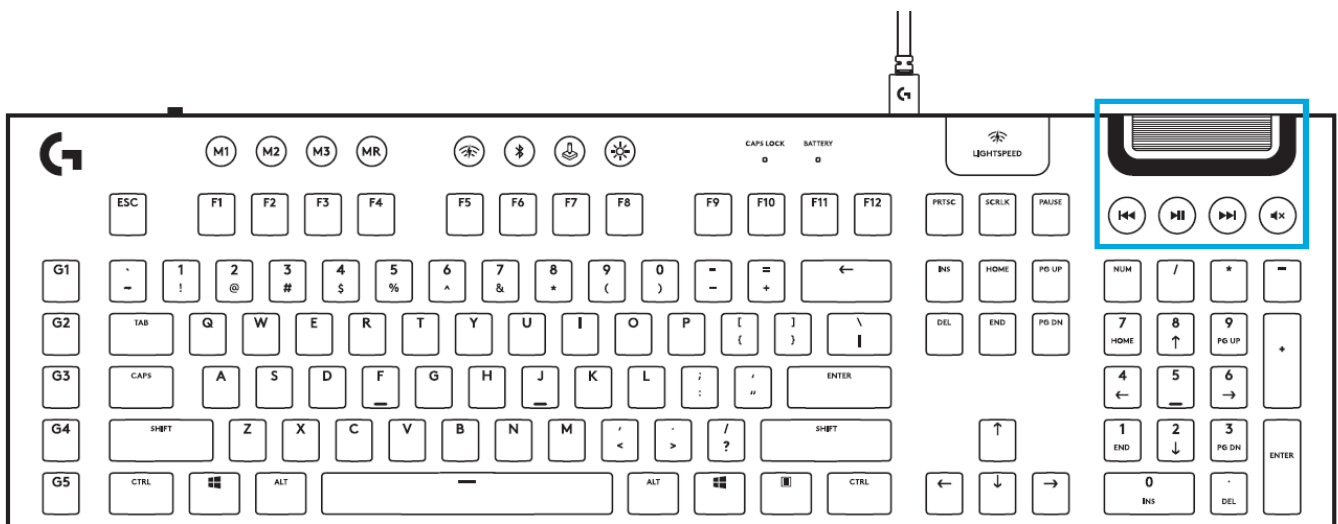
from G HUB software, or when G HUB software is off or not installed.



KEYBOARD FEATURES — MEDIA CONTROLS

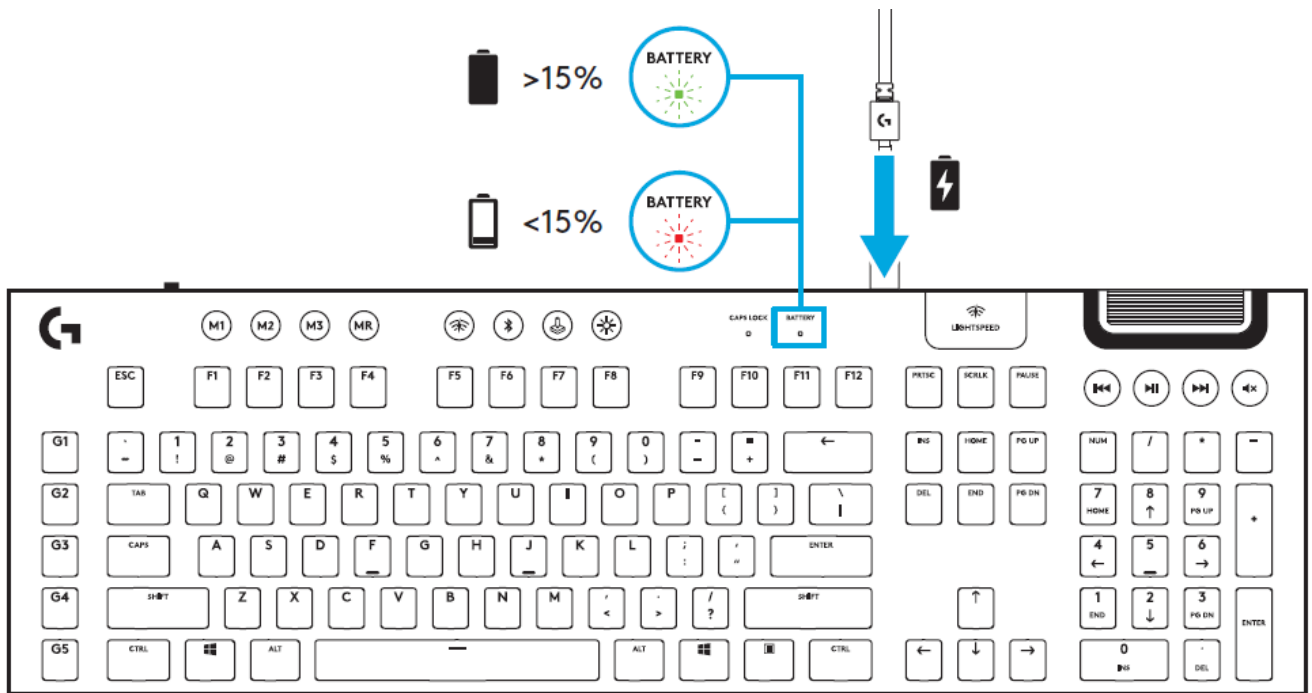
G915 has media controls, located in the upper right corner of the keyboard.

- Volume roller — controls volume of the active audio on your PC.
- Skip back — goes to the beginning of a track, or to a previous track, depending on the application.
- Play/Pause — starts or stops the audio or video source playback.
- Skip forward — goes to the end of the track or to the next track, depending on the application.
- Mute — stops audio output.



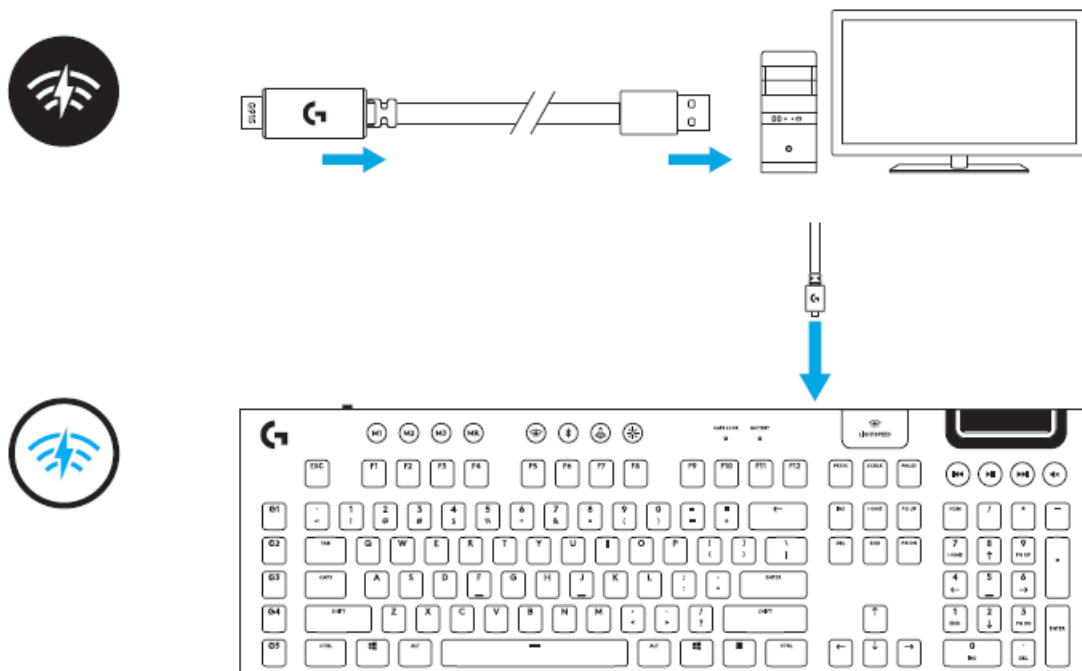
KEYBOARD FEATURES — BATTERY INDICATOR

- Pulses green when charging.
- Shows green momentarily when started when battery is above 15%.
- Shows red when keyboard needs charging.



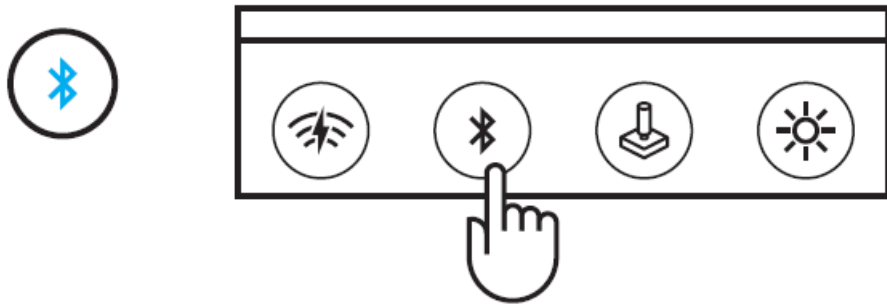
KEYBOARD FEATURES — WIRELESS CONTROLS

- LIGHTSPEED button selects LIGHTSPEED wireless connection, which connects to the PC or Mac using the included receiver dongle. It shows white when connected, blue when wired connection.

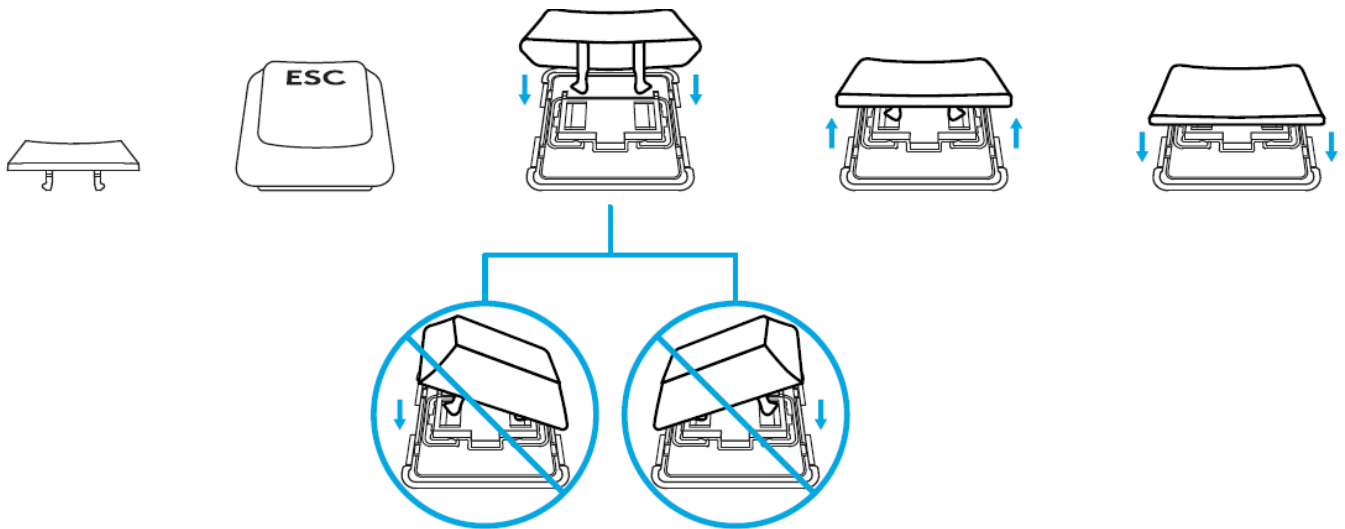


KEYBOARD FEATURES — BLUETOOTH®

- Bluetooth button connects to devices via a Bluetooth connection. It shows blue when connected.



KEY CAP REMOVAL + REPLACEMENT



CARE AND CLEANING

To clean the keyboard, use a soft, lint-free or microfiber cloth. A damp cloth can be used. Do not use harsh cleaning solutions.

Do not immerse the keyboard or expose it to liquids.

www.logitech.com/support/G915

© 2019 Logitech, Logi and the Logitech Logo are trademarks or registered trademarks of Logitech Europe S.A. and/or its affiliates in the U.S. and other countries. Logitech assumes no responsibility for any errors that may appear in this manual. Information contained herein is subject to change without notice.

© 2019 Logitech, Logi et le logo Logitech sont des marques commerciales ou déposées de Logitech Europe S.A. et/ou de ses sociétés affiliées aux États-Unis et dans d'autres pays. Logitech décline toute responsabilité en cas d'erreurs susceptibles de s'être glissées dans le présent manuel. Les informations énoncées dans ce document peuvent faire l'objet de modifications sans préavis.

WEB-621-001405.003

Documents / Resources

