



logitech G903 Lightspeed Wireless Gaming Mouse User Guide

[Home](#) » [Logitech](#) » logitech G903 Lightspeed Wireless Gaming Mouse User Guide 

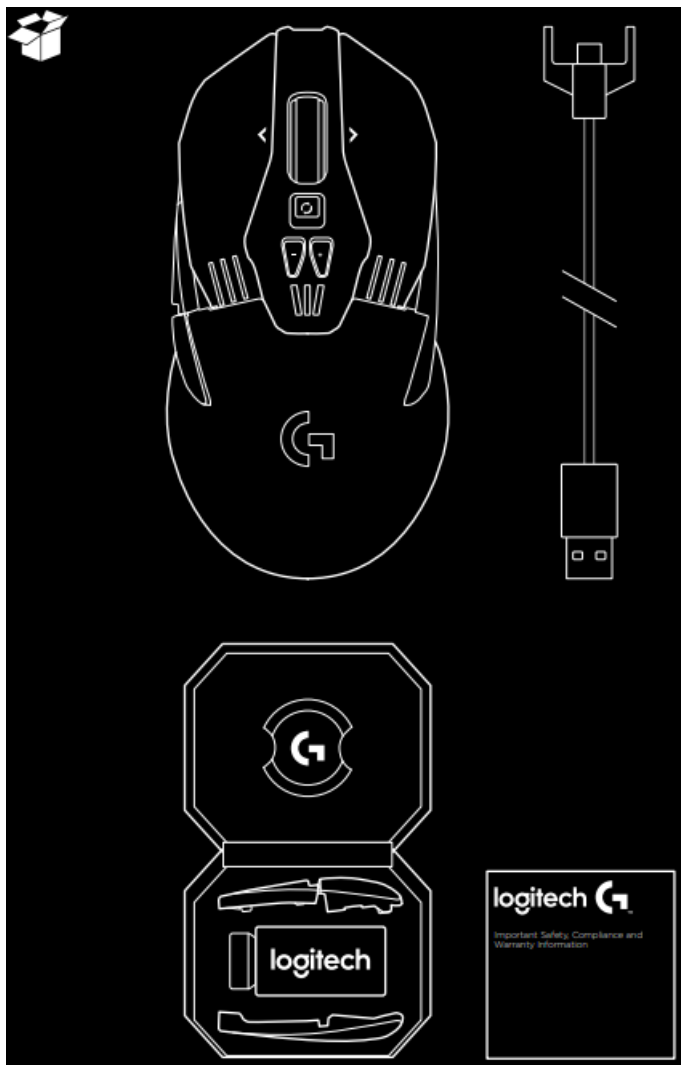
logitech G903 Lightspeed Wireless Gaming Mouse User Guide



Contents

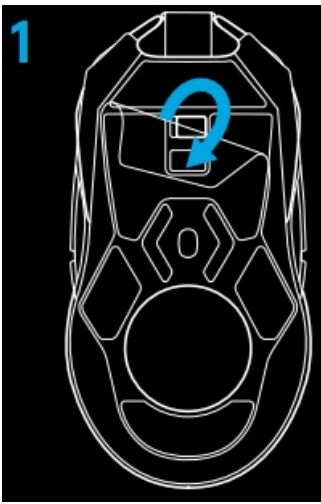
- 1 What's in the Box
- 2 SETUP INSTRUCTIONS
- 3 BUTTON CONFIGURATIONS
- 4 11 FULLY PROGRAMMABLE BUTTONS
- 5 BATTERY LIFE
- 6 CHARGING/DATA OVER CABLE
- 7 RGB PROGRAMMABLE LIGHTING
- 8 LOGITECH GAMING SOFTWARE
- 9 DPI/ONBOARD PROFILE INDICATORS
- 10 HYPERFAST SCROLL WHEEL
- 11 QUESTIONS
- 12 Documents / Resources
 - 12.1 References
- 13 Related Posts

What's in the Box

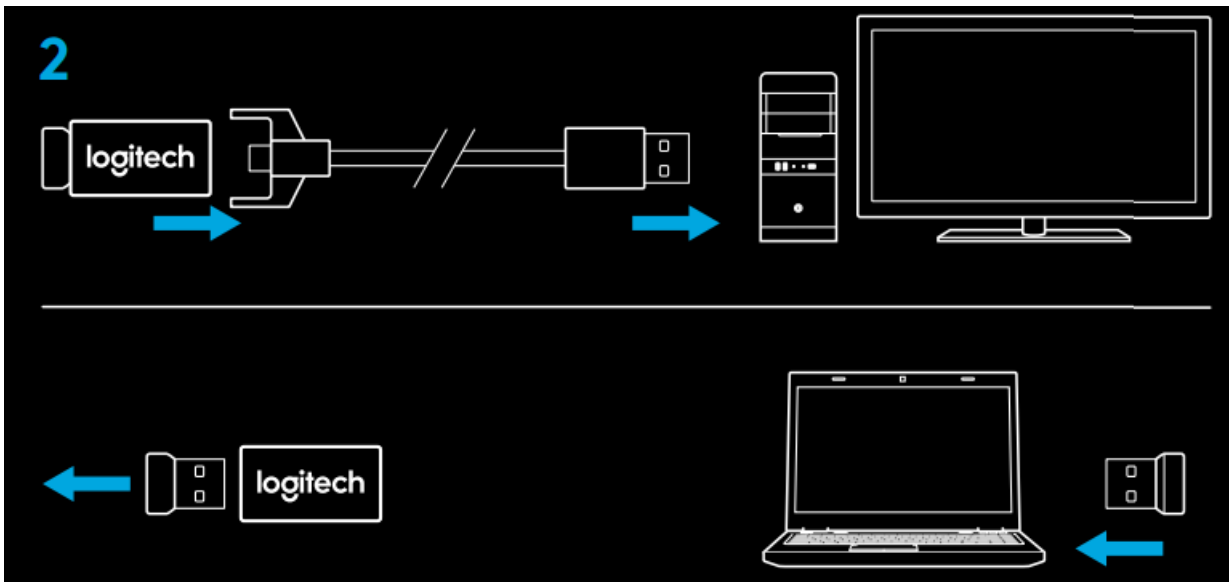


SETUP INSTRUCTIONS

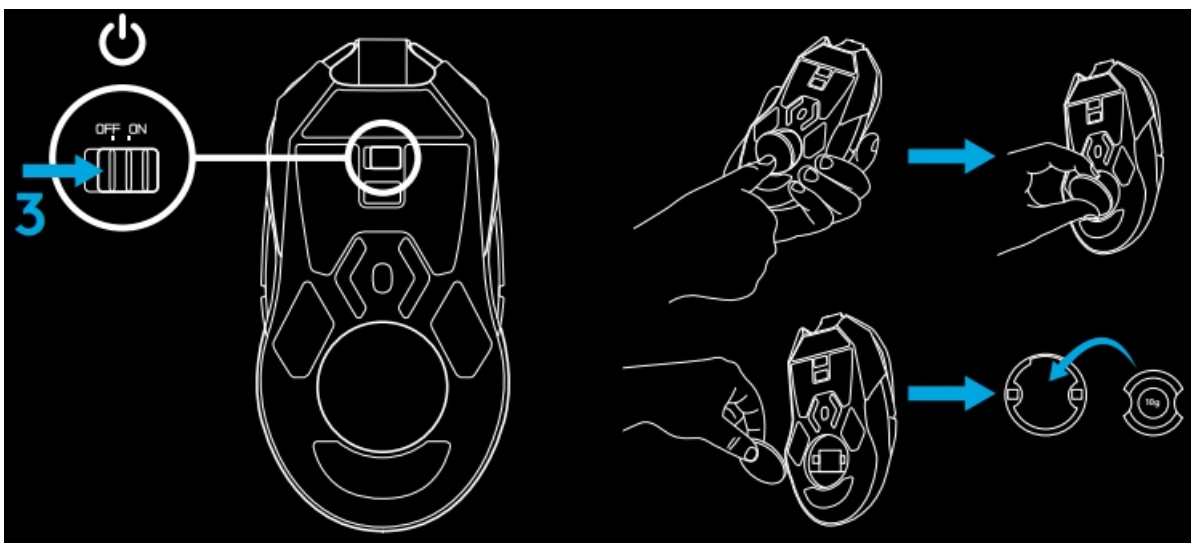
1. Remove the protective film on the bottom side of the mouse before use. This film is designed to protect the sensor from dust during transport, and your mouse may not function unless this is removed.



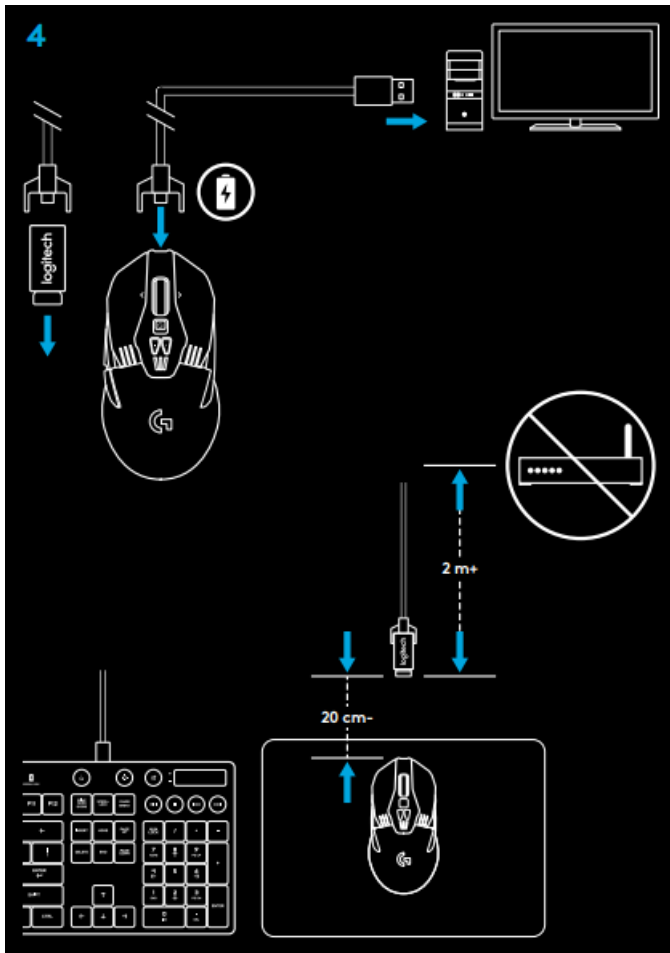
2. A wireless receiver, USB adapter, and optional 10g weight can be found in the accessory box. Plug one end of the cable into your PC, and the other end into the USB adapter and receiver.
The receiver can also be used plugged directly into your PC.
However, using the cable and adapter when in wireless mode is recommended and allows for better connectivity and easy access to the cable for recharging.



3. Turn mouse on via the switch on the bottom of the mouse.



4. To charge, disconnect the cable from the adapter and plug into the front of the mouse. Your mouse will operate in data-over-cable mode whenever it is plugged in directly to a PC. Full charge from empty requires approximately two hours plugged in to a PC USB port.



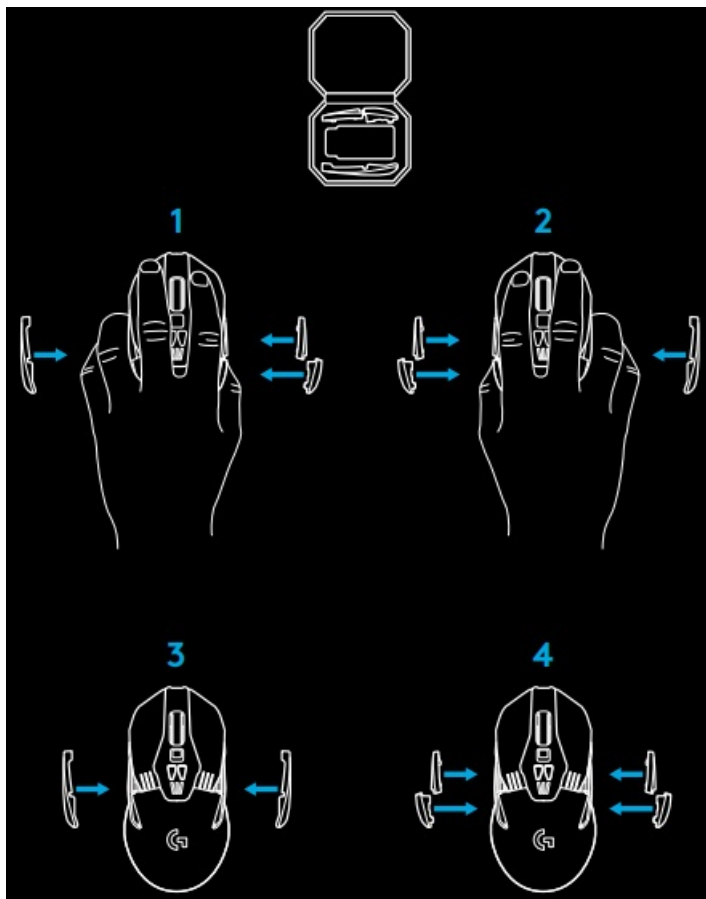
Tips:

- Keep the mouse and receiver 2 m+ away from wireless routers or other 2.4GHz wireless devices to minimize environmental noise.
- G903 has a wireless range of up to 10 meters. To ensure optimal performance in noisy wireless environments, and to keep the charging cable easily accessible, it is recommended to keep the receiver within 20 cm of the mouse.

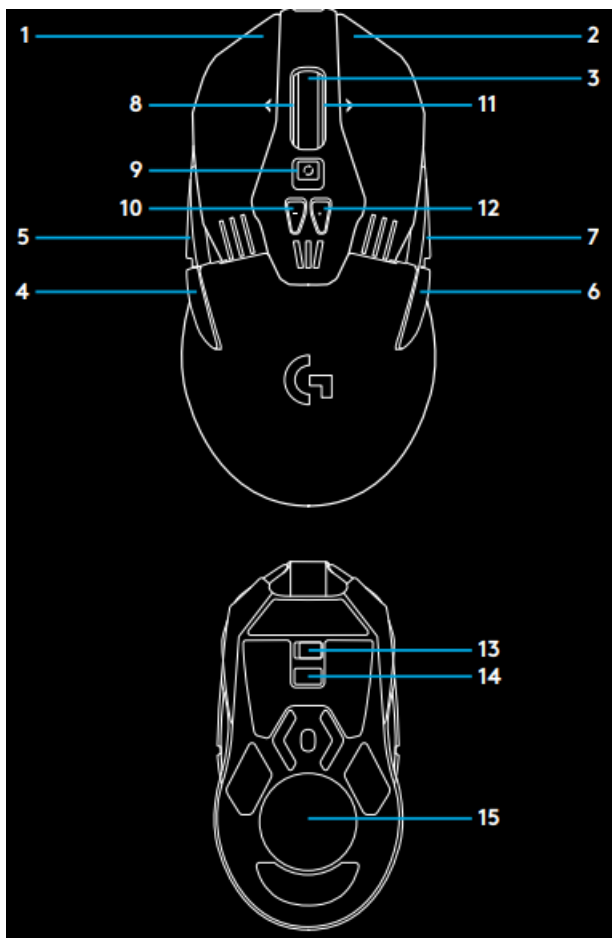
BUTTON CONFIGURATIONS

G903 comes with replaceable buttons and button caps, which are held onto the mouse magnetically. These should be stored in box when not in use. These replaceable buttons support conversion to the following configurations:

1. Left handed
2. Right handed
3. No buttons
4. Full buttons



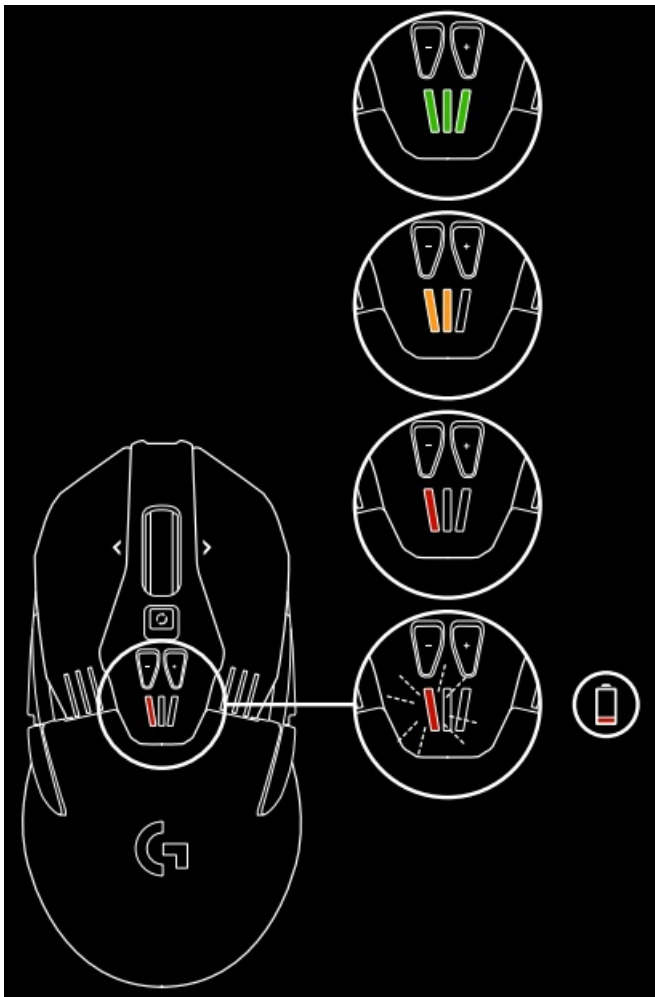
11 FULLY PROGRAMMABLE BUTTONS



1. Left (Button 1)

2. Right (Button 2)
3. Wheel click (Button 3)
4. Back (Button 4)
5. Forward (Button 5)
6. Back (Button 6)
7. Forward (Button 7)
8. Scroll left (wheel tilt left)
9. Wheel mode shift (not programmable)
10. DPI Down (Button -)
11. Scroll right (wheel tilt right)
12. DPI Up (Button +)
13. On/Off switch (bottom of mouse, not programmable)
14. Profile Select (bottom of mouse, not programmable)
15. Weight door

BATTERY LIFE



G903 has a rechargeable 720mAh LiPo battery which provides it with up to 32 hours non-stop gaming at 1ms report rate with lights off, or 24 hours non-stop gaming at 1ms report rate with RGB color cycling on.*

- Charge level can be checked when the mouse is powered on or using Logitech Gaming Software to assign a button to check charge level.

- Charge level is displayed for seven seconds at mouse power-on using the color and number of bars illuminated on the DPI indicator:
 - 3 green bars = 50–100%
 - 2 orange bars = 30–50%
 - 1 red bar = 15–30%
 - 1 flashing red bar = <15%

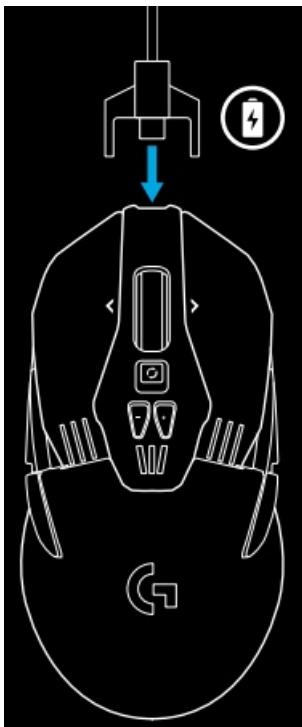
Tip: You can program a button to show charge level using LGS.

- The left DPI LED will flash red when battery is at 15% or less.
When this happens, plug in your mouse to charge.
- Charge level, power draw, and estimated remaining battery life can be checked in Logitech Gaming Software

Battery life and capacity may vary with age and use. Rechargeable batteries have a limited number of charge cycles.

CHARGING/DATA OVER CABLE

Plug your mouse in via the provided USB charging cable when the battery is low. G903 is also compatible with the Logitech G POWERPLAY wireless charging system, sold separately.



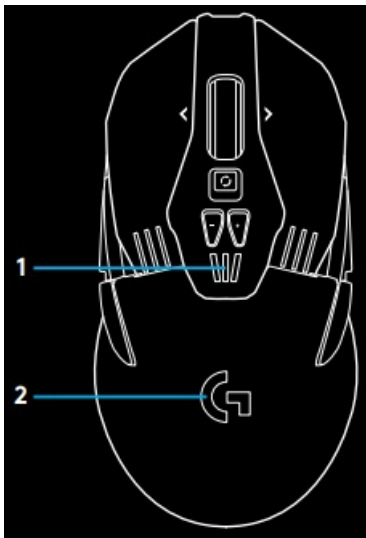
RGB PROGRAMMABLE LIGHTING

G903 has two lighting zones

1. DPI indicators
2. G logo

These colors can be customized using Logitech Gaming Software to a variety of breathing, color cycling, or solid color modes.

Lighting patterns can also be synchronized with other supported Logitech G devices using this software.



LOGITECH GAMING SOFTWARE

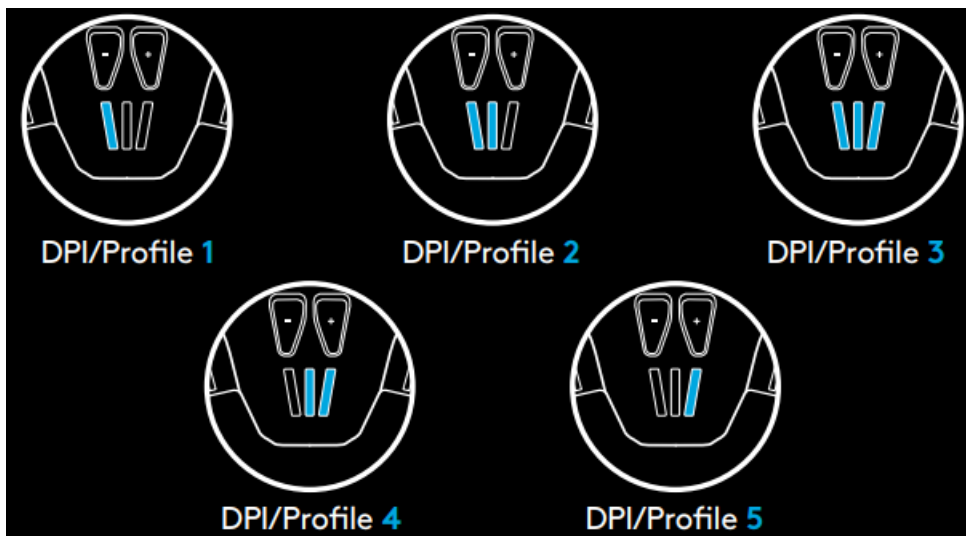
You can customize the 5 onboard profiles of the G903 using the Logitech Gaming Software. These settings include surface tuning, button programming, lighting color, lighting effects, report rate, and tracking behavior. G903 allows up to 5 DPI settings per profile.

By default, G903 has 1 active onboard profile with the following settings:

- DPI: 400/800/1600/3200/6400
- RGB lighting: color cycle
- Report rate: 1ms

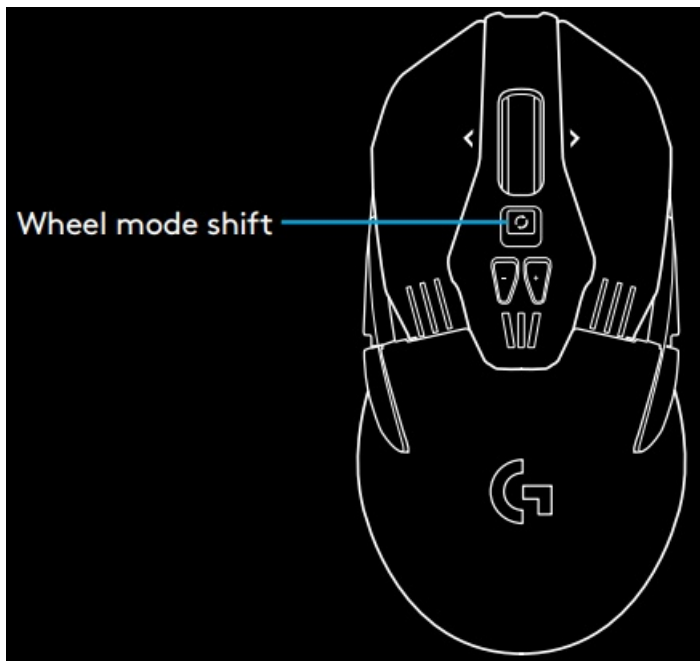
DPI/ONBOARD PROFILE INDICATORS

DPI/Onboard profiles are shown using three LEDs under the +/- buttons. The image below shows which values are being indicated by the LED panel.



HYPERFAST SCROLL WHEEL

G903 features Logitech's exclusive dual-mode Hyperfast scroll wheel. Click the button right below the wheel to switch between the two modes.



QUESTIONS

<http://support.logitech.com/product/g903>



© 2019 Logitech, Logi and the Logitech Logo are trademarks or registered trademarks of Logitech Europe S.A. and/or its affiliates in the U.S. and other countries. All other trademarks are the property of their respective owners.

Logitech assumes no responsibility for any errors that may appear in this manual. Information contained herein is subject to change without notice.

WEB-621-001019.003



Documents / Resources

	logitech G903 Lightspeed Wireless Gaming Mouse [pdf] User Guide G903, Lightspeed Wireless Gaming Mouse, G903 Lightspeed Wireless Gaming Mouse, Wireless Gaming Mouse, Gaming Mouse, Mouse
	logitech G903 Lightspeed Wireless Gaming Mouse [pdf] User Guide G903 Lightspeed Wireless Gaming Mouse, G903, Lightspeed Wireless Gaming Mouse, Lightspeed Gaming Mouse, Wireless Gaming Mouse, Gaming Mouse

References

- [Home - Identity Digital](#)
- [Logitech Support + Download](#)

