



logitech G502 X PLUS, LIGHTSPEED Wireless Gaming Mouse User Guide

[Home](#) » [Logitech](#) » logitech G502 X PLUS, LIGHTSPEED Wireless Gaming Mouse User Guide 



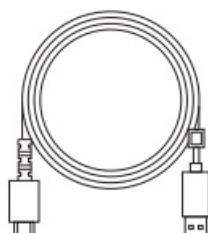
logitech™

**G502 X PLUS | G502 X LIGHTSPEED
Wireless Gaming Mouse
SETUP GUIDE**

Contents

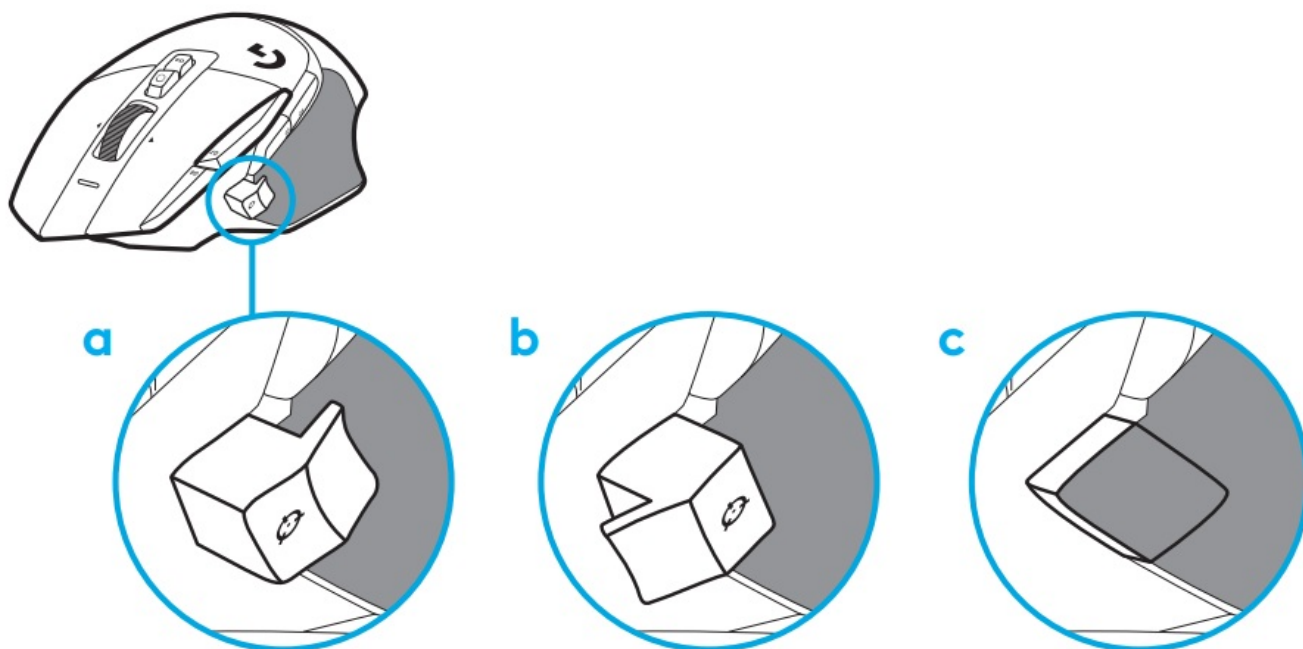
- [1 G502 X PLUS, LIGHTSPEED Wireless Gaming Mouse](#)
- [2 SETUP INSTRUCTIONS](#)
- [3 MOUSE FEATURES](#)
- [4 ONBOARD PROFILES BY DEFAULT](#)
- [5 PROFILE, DPI SELECTION, AND DPI SHIFT](#)
- [6 BATTERY LIFE](#)
- [7 Documents / Resources](#)
 - [7.1 References](#)
- [8 Related Posts](#)

G502 X PLUS, LIGHTSPEED Wireless Gaming Mouse

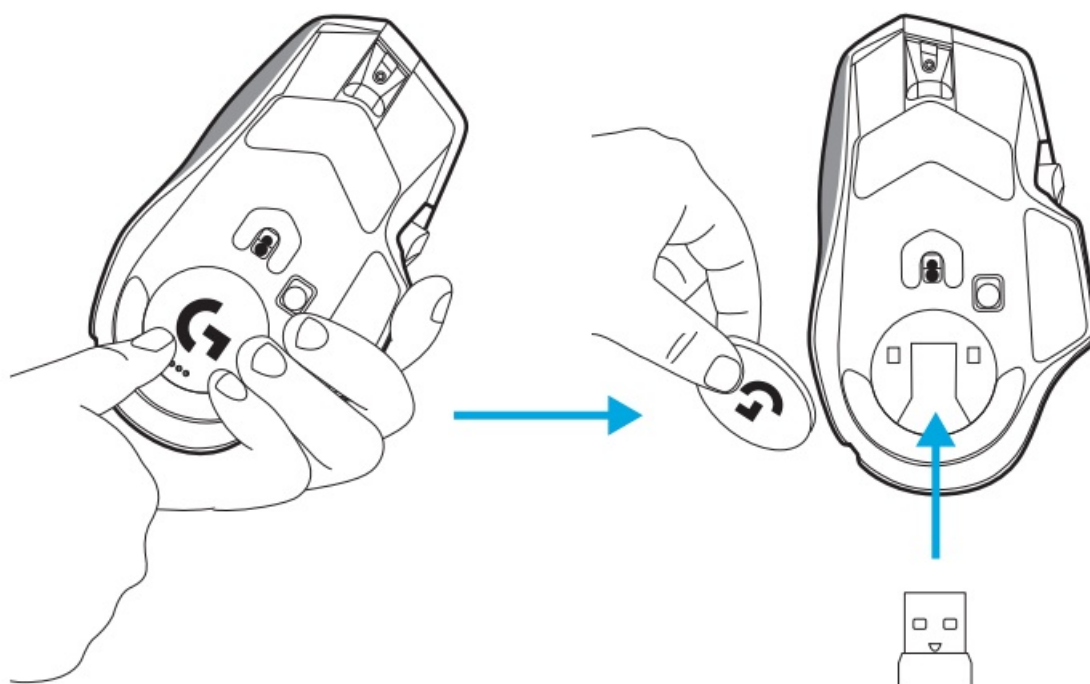


SETUP INSTRUCTIONS

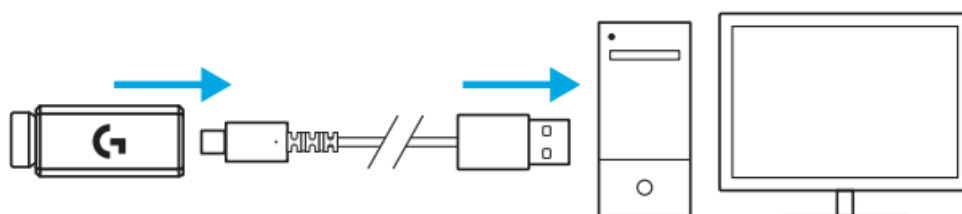
1. Orientate the DPI Shift to fit your preference or replace it by the button, cover to extend the grip surface.



2. The receiver can be stored in the mouse behind the door when on the go.



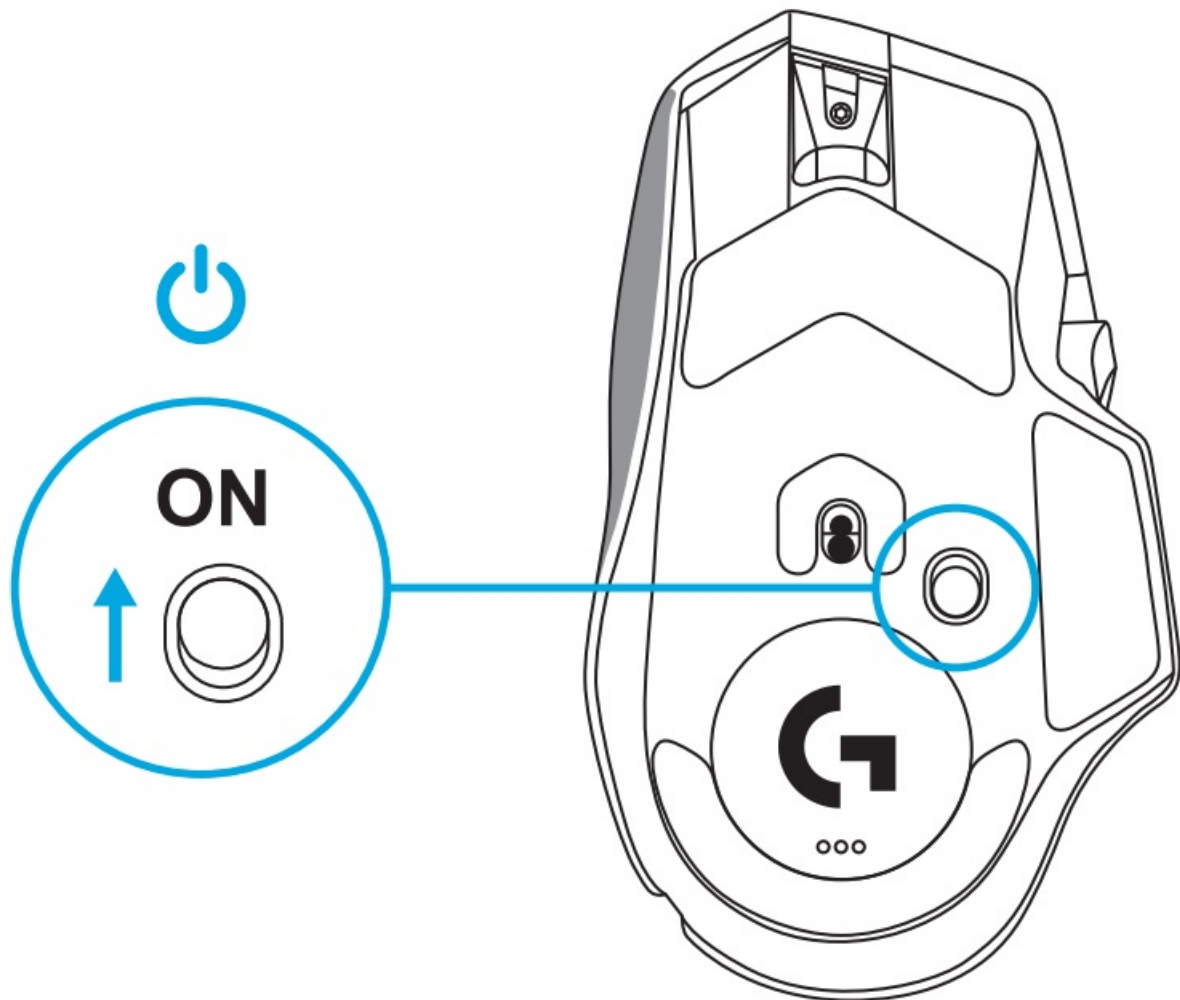
3. The LIGHTSPEED Wireless USB-A receiver is below the mouse in the product tray.



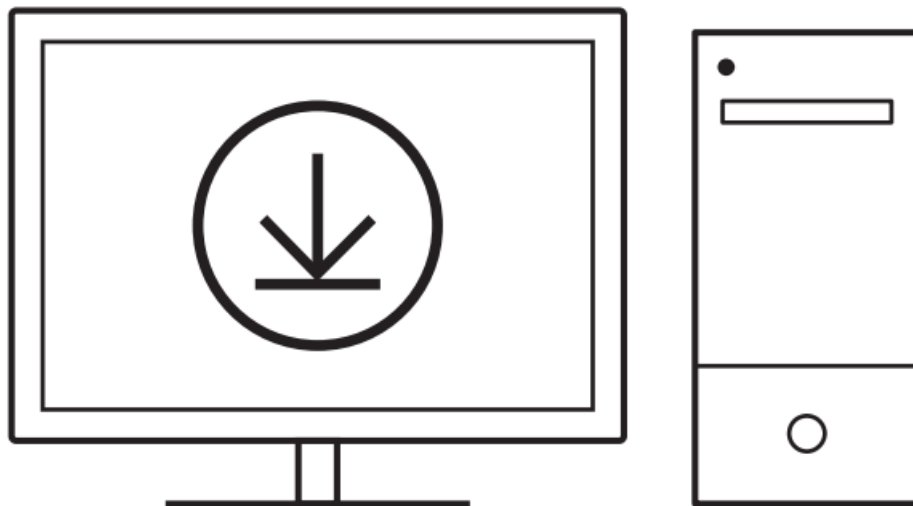
Plug the USB-A cable connector into your PC and the USB-C connector into the receiver extension adapter
Plug the USB-A receiver into the adapter

– The LIGHTSPEED Wireless receiver can also be plugged directly into your PC, but using the cable and extension adapter will ensure a better connection and easy access to the cable when you need to charge your mouse

4. Slide the power button up to turn on your mouse.

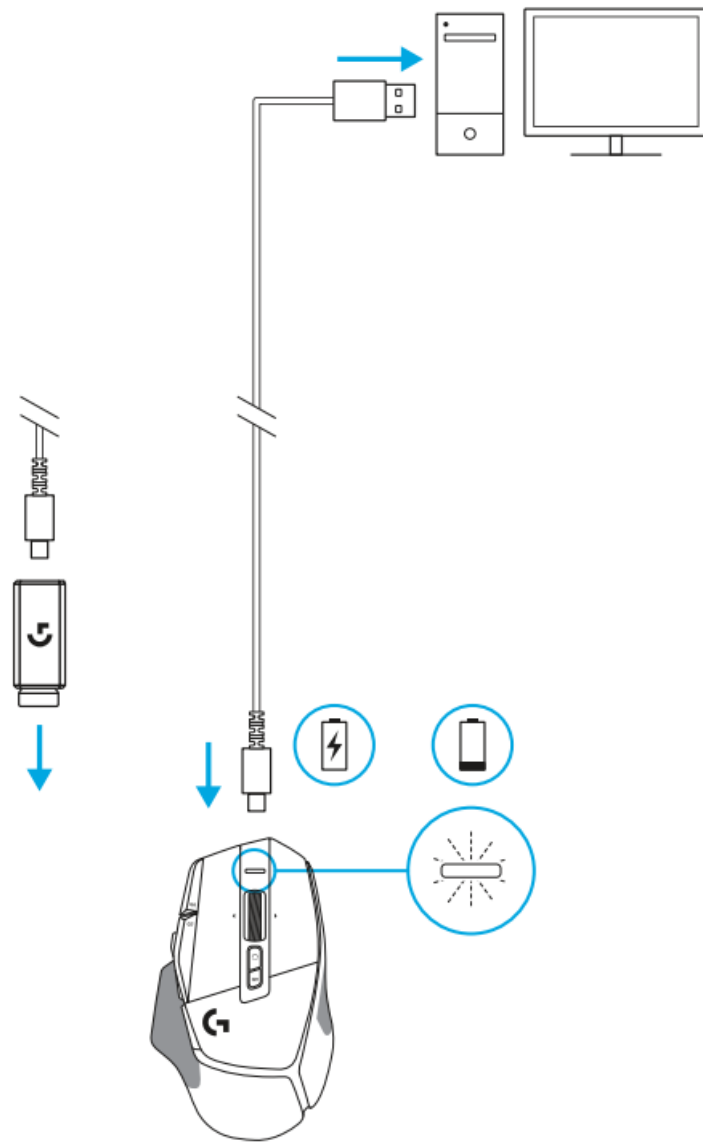


5. Download Logitech G HUB gaming software to personalize your G502 X mouse Fine tune to suit your playstyle, personality, and each of your games, assign commands to any of the 13 controls, and more.



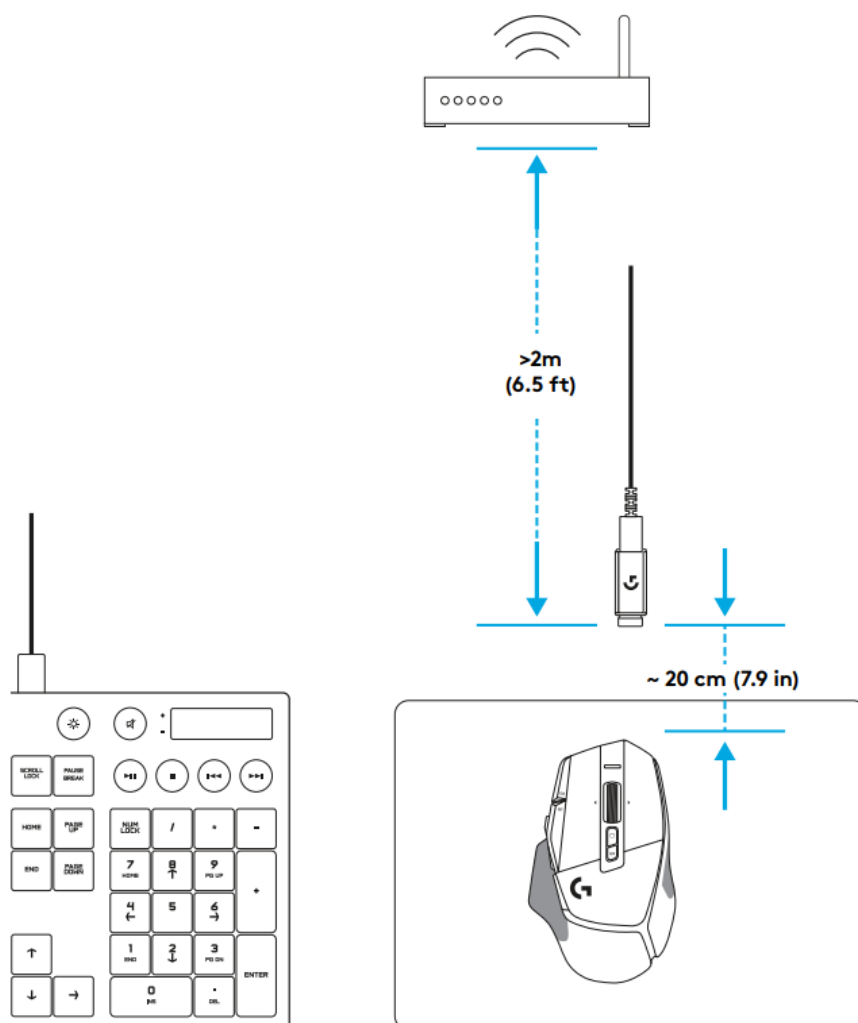
logitechG.com/gnhub

6. To charge your mouse, disconnect the cable from the adapter and plug it into the USB-C port located at the front of the mouse Your mouse will operate in data-over-cable mode whenever it is plugged in directly to a PC Charging from 0% to 100% takes around 2 hours when plugged into a USB port Compatible with Powerplay wireless charging system



Tips:

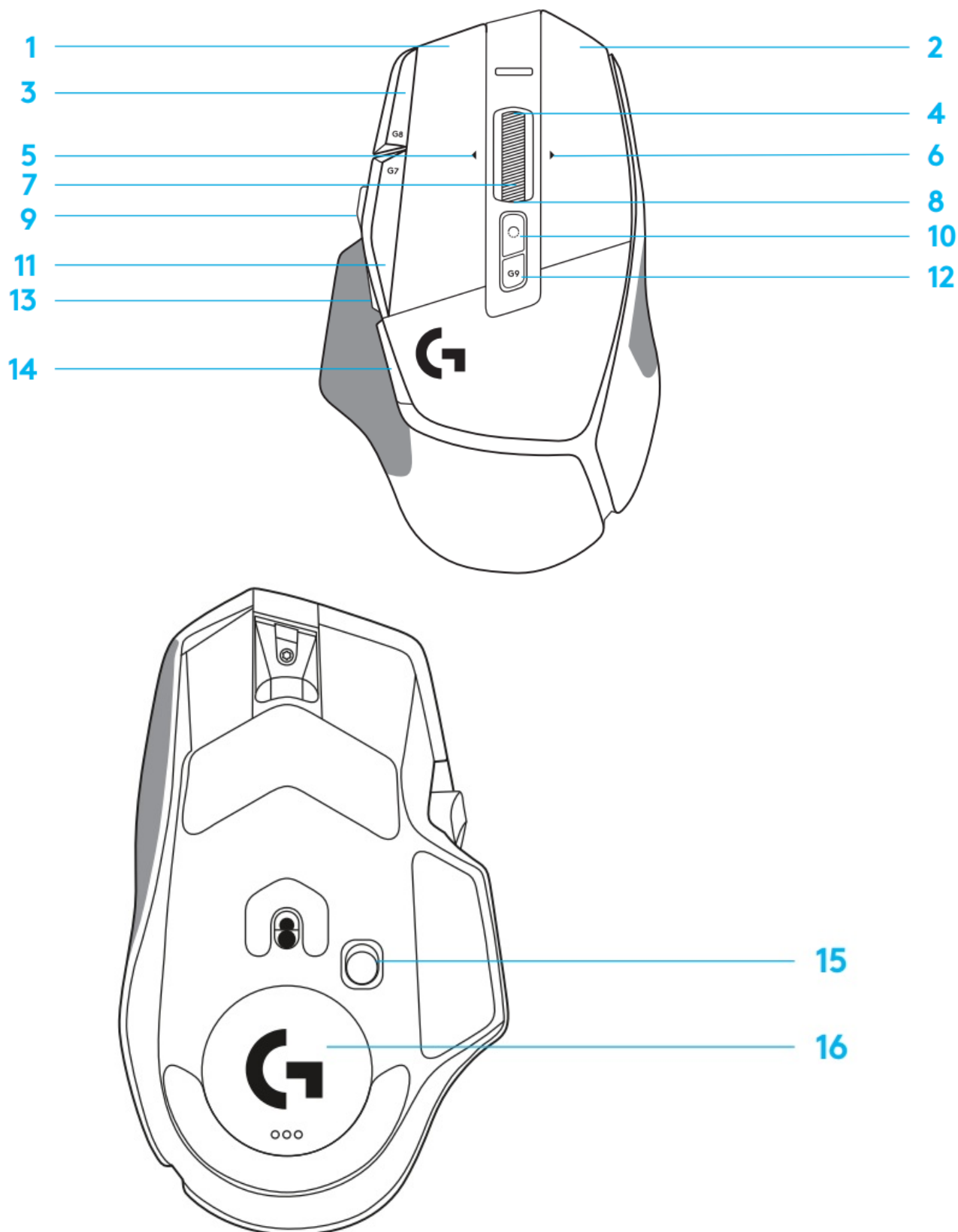
- Keep the mouse and receiver at least 2 meters away from wireless routers or other 2.4 GHz wireless devices to minimize environmental noise
- G502 X PLUS and G502 X LIGHTSPEED have a wireless range of up to 10 meters. To ensure optimal performance in noisy wireless environments, and to keep the charging cable easily accessible, it is recommended to keep the receiver within 20 cm of the mouse.



MOUSE FEATURES

- 1 Left click (Button G1)
- 2 Right click (Button G2)
- 3 DPI up (Button G8)
- 4 Scroll up
- 5 Scroll left (Wheel tilt left)
- 6 Scroll right (Wheel tilt right)
- 7 Middle click (Button G3)
- 8 Scroll down

- 9 DPI Shift (Button G6)
- 10 Wheel mode toggle but
- 11 DPI down (Button G7)
- 12 Profile cycling (Button (
- 13 Forward (Button G5)
- 14 Back (Button G4)
- 15 On / Off switch (bottom
- 16 POWERPLAY™Apertu



ONBOARD PROFILES BY DEFAULT

- Up to 5 Onboard memory profiles can be unlocked and customized in G HUB

SETTINGS

Report Rate
DPI
DPI steps colors
Default DPI
G6 button

MAIN PROFILE GAMING
1 ms
800, 1200, 1600, 2400, 3200
1: White 2: Orange 3: Teal 4: Yellow 5: Magenta
1600
DPI Shift to 800

SECONDARY PROFILE PRODUCTIVITY	SECONDARY PROFILE G-SHIFTE D (G-SHIFT on DPI Shift button)
2 ms	no changes
800, 1200, 1600, 2400, 3200	no changes
1: White 2: Orange 3: Teal	
1600	no changes
G-Shift (see right column	no changes

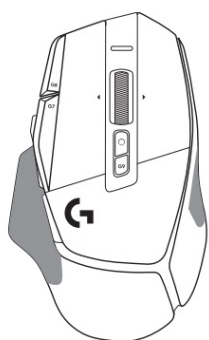
PROGRAMMABLE CONTROLS

Left Main Button
Right Main Button
Middle Wheel Button
G4 Button
G5 Button
G7 Button
G8 Button
G9 Button
Scroll right (wheel tilt right)
Scroll left (wheel tilt left)
Wheel Scroll Up
Wheel Scroll Down

Left click – system/application
Right click – system/application
Wheel click/press – system/application
Side button – system/application (commonly used backwards)
Side button – system/application (commonly used backwards)
DPI Down
DPI Up
Profile cycle
Tilt Right- system/application
Tilt left- system/application
Scroll Up – system/application
Scroll Down – system/application

Left click – system/application	no changes
Right click – system/application	no changes
Wheel click/press – system/application	Ctrl-T – opening a new tab in the browser
Side button – system/application	no changes
(commonly used backward)	no changes
DPI Down	Ctrl-X
DPI Up	Ctrl-Z
Profile cycle	Ctrl-0
Tilt Right- system/application	Ctrl-Tab
Tilt left- system/application	Ctrl-Xhift-Tab
Scroll Up – system/application	Volume Up
Scroll Down – system/application	Volume Down

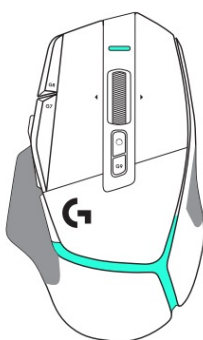
PROFILE, DPI SELECTION, AND DPI SHIFT



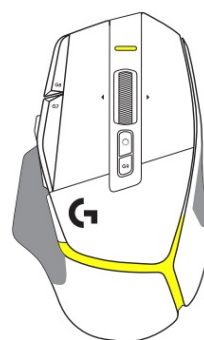
DPI 1 / Profile 1



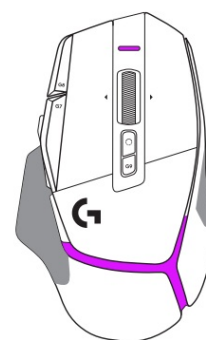
DPI 2 / Profile 2



DPI 3 / Profile 3



DPI 4 / Profile 4



DPI 5 / Profile 5

When the DPI Shift button is pressed: the mouse displays the color associated with the DPI shift speed, when released the mouse displays the DPI setting color that was used prior to this action DPI and profile selection are communicated using lighting on the top and the rear of the mouse DPI change is expressed by different steady colors,

while profile change is displayed by different blinking colors

FREQUENTLY ASKED QUESTIONS

www.logitechG.com/support/G502X-PLUS

BATTERY LIFE

G502 X PLUS and G502 X LIGHTSPEED have a rechargeable 500 mAh LiPol battery which provides up to 140 h of continuous motion for G502 X and up to 120 h for G502 X PLUS

Charging Status:

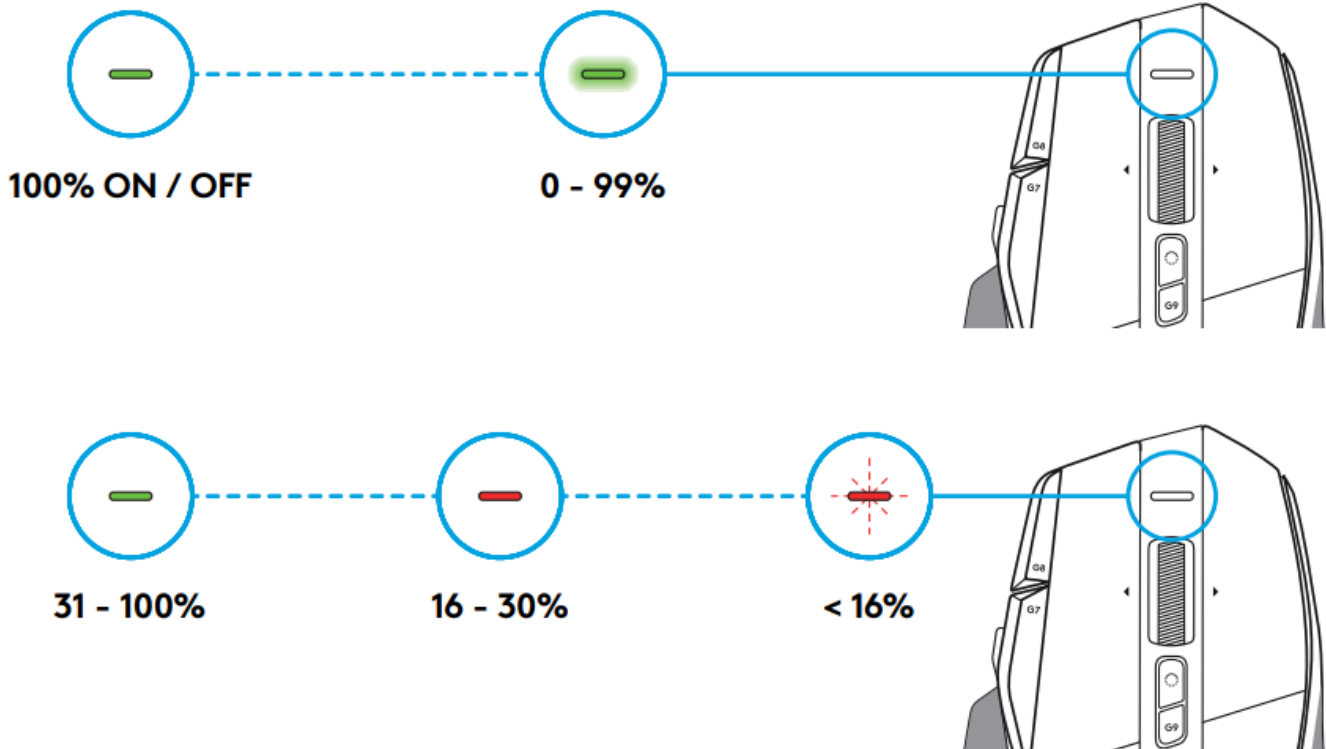
When the charging cable is plugged in the device::

- Steady green = charge completed (100%) when device is ON or OFF
- Breathing green = charging (0 – 99%)

Battery level::

When turning the device ON:

- Steady green = good (31% – 100%)
- Steady red = low (16 – 30%)
- Slow blink red = critical (< 16%)



Tips:

- Charge level, power draw, and estimated remaining battery life can be checked in Logitech G HUB
 - * Battery life and capacity may vary with age and use
- Rechargeable batteries have a limited number of charge cycles



©2022 Logitech Logitech, Logitech G, Logi, and their respective logos are trademarks or registered trademarks of Logitech Europe S A and/or its affiliates in the U S and other countries All other trademarks are the property of their respective owners Logitech assumes no responsibility for any errors that may appear in this manual Information contained herein is subject to change without notice
WEB-621-001936 002



[logitech G502 X PLUS, LIGHTSPEED Wireless Gaming Mouse](#) [pdf] User Guide
G502 X PLUS, G502 X LIGHTSPEED, Wireless Gaming Mouse, Wireless Mouse, Gaming Mouse, Mouse

References

- [Logitech G HUB Advanced Gaming Software, RGB & Game Profiles](#)