




logitech G502 X Gaming Mouse User Guide

[Home](#) » [Logitech](#) » logitech G502 X Gaming Mouse User Guide 

logitech G502 X Gaming Mouse User Guide

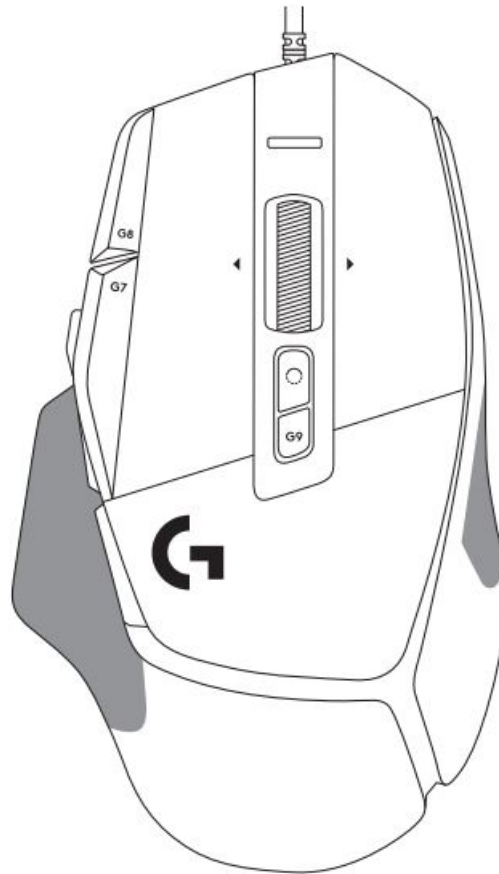
G502 X

Gaming Mouse

SETUP GUIDE



logitech 

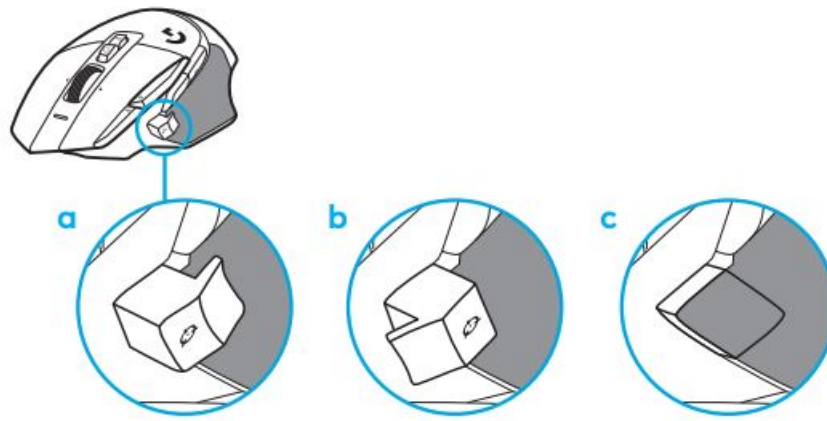


Contents

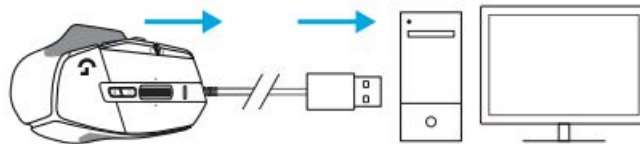
- [1 SETUP INSTRUCTIONS](#)
- [2 MOUSE FEATURES](#)
- [3 ONBOARD PROFILES BY DEFAULT](#)
- [4 PROFILE, DPI SELECTION AND DPI SHIFT](#)
- [5 FREQUENTLY ASKED QUESTIONS](#)
- [6 Documents / Resources](#)
 - [6.1 References](#)
- [7 Related Posts](#)

SETUP INSTRUCTIONS

1. Orientate the DPI Shift to fit your preference or replace it by the button cover to extend the grip surface.



2. Plug the USB-A cable into your PC.

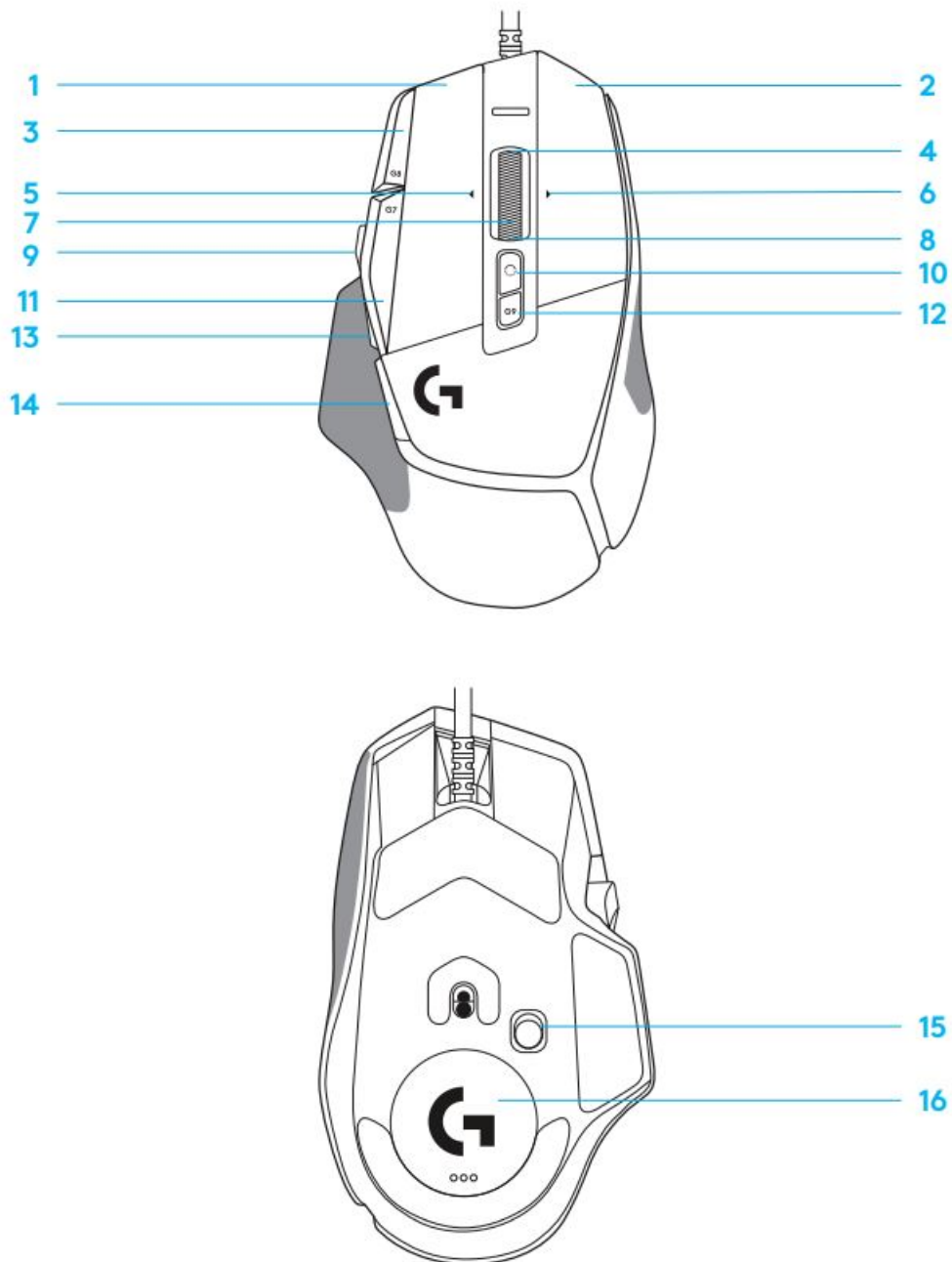


3. Download Logitech G HUB gaming software to personalize your G502 X mouse. Fine tune to suit your playstyle, personality and each of your games, assign commands to any of the 13 controls, and more.



logitechG.com/ghub

MOUSE FEATURES



1. Left click (Button G1)
2. Right click (Button G2)
3. DPI up (Button G8)
4. Scroll up
5. Scroll left (Wheel tilt left)
6. Scroll right (Wheel tilt right)
7. Middle click (Button G3)
8. Scroll down
9. DPI Shift (Button G6)
10. Wheel mode toggle button (not programmable)
11. DPI down (Button G7)
12. Profile cycling (Button G9)
13. Forward (Button G5)
14. Back (Button G4)
15. On / Off switch (bottom of mouse, not programmable)

16. POWERPLAY™ Aperture door wireless receiver storage

ONBOARD PROFILES BY DEFAULT

Up to 5 Onboard memory profiles can be unlocked and customized in G HUB.

SETTINGS	MAIN PROFILE GAMING	SECONDARY PROFILE PRODUCTIVITY	SECONDARY PROFILE G-SHIFTED (G-SHIFT on DPI Shift button)
Report Rate	1 ms	2 ms	no changes
DPI	800, 1200, 1600, 2400, 3200	800, 1200, 1600, 2400, 3200	no changes
DPI steps colors	1: White 2: Orange 3: Teal 4: Yellow 5: Magenta	1: White 2: Orange 3: Teal 4: Yellow 5: Magenta	
Default DPI	1600	1600	no changes
G6 button	DPI Shift to 800	G-Shift (see right column)	no changes

PROGRAMMABLE CONTROLS			
Left Main Button	Left click - system/application	Left click - system/application	no changes
Right Main Button	Right click - system/application	Right click - system/application	no changes
Middle Wheel Button	Wheel click/press - system/application	Wheel click/press - system/application	Ctrl-T -- opening a new tab in browser
G4 Button	Side button - system/application (commonly used backwards)	Side button - system/application (commonly used backwards)	no changes
G5 Button	Side button - system/application (commonly used backwards)	Side button - system/application (commonly used backwards)	no changes
G7 Button	DPI Down	DPI Down	Ctrl-X
G8 Button	DPI Up	DPI Up	Ctrl-Z
G9 Button	Profile cycle	Profile cycle	Ctrl-O
Scroll right (wheel tilt right)	Tilt Right- system/application	Tilt Right- system/application	Ctrl-Tab
Scroll left (wheel tilt left)	Tilt left- system/application	Tilt left- system/application	Ctrl-Xhift-Tab
Wheel Scroll Up	Scroll Up - system/application	Scroll Up - system/application	Volume Up
Wheel Scroll Down	Scroll Down - system/application	Scroll Down - system/application	Volume Down

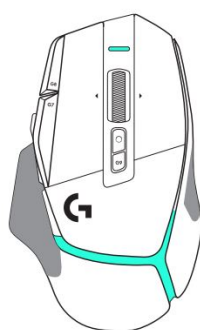
PROFILE, DPI SELECTION AND DPI SHIFT



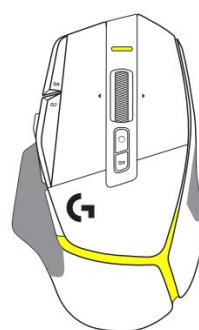
DPI 1 / Profile 1



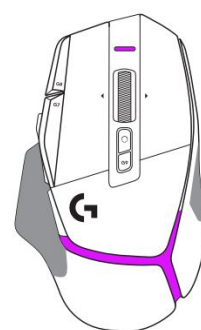
DPI 2 / Profile 2



DPI 3 / Profile 3



DPI 4 / Profile 4



DPI 5 / Profile 5

When the DPI Shift button is pressed: the mouse displays the color associated with the DPI shift speed, when released the mouse displays the DPI setting color that was used prior to this action. DPI and profile selection are communicated using lighting on the top and the rear of the mouse. DPI change is expressed by different steady colors, while profile change is displayed by different blinking colors.



FREQUENTLY ASKED QUESTIONS

www.logitechG.com/support/G502X



©2022 Logitech. Logitech, Logitech G, Logi and their respective logos are trademarks or registered trademarks of Logitech Europe S.A. and/or its affiliates in the U.S. and other countries. All other trademarks are the property of their respective owners. Logitech assumes no responsibility for any errors that may appear in this manual. Information contained herein is subject to change without notice.
WEB-621-001933 002

Documents / Resources

	logitech G502 X Gaming Mouse [pdf] User Guide G502 X, Gaming Mouse, G502 X Gaming Mouse, Mouse
	logitech G502 X Gaming Mouse [pdf] User Guide G502 X Gaming Mouse, G502 X, Gaming Mouse, Mouse

References

- [Logitech G HUB Advanced Gaming Software, RGB & Game Profiles](#)
- [Logitech Support + Download](#)