



Logitech G402 Hyperion Fury Wireless Mouse User Guide

[Home](#) » [Logitech](#) » Logitech G402 Hyperion Fury Wireless Mouse User Guide 

Contents

- [1 Logitech G402 Hyperion Fury Wireless Mouse](#)
- [2 Setup Guide](#)
- [3 fully programmable buttons](#)
- [4 Default Settings](#)
- [5 Onboard profile](#)
- [6 DPI indicators](#)
- [7 Documents / Resources](#)
 - [7.1 References](#)
- [8 Related Posts](#)

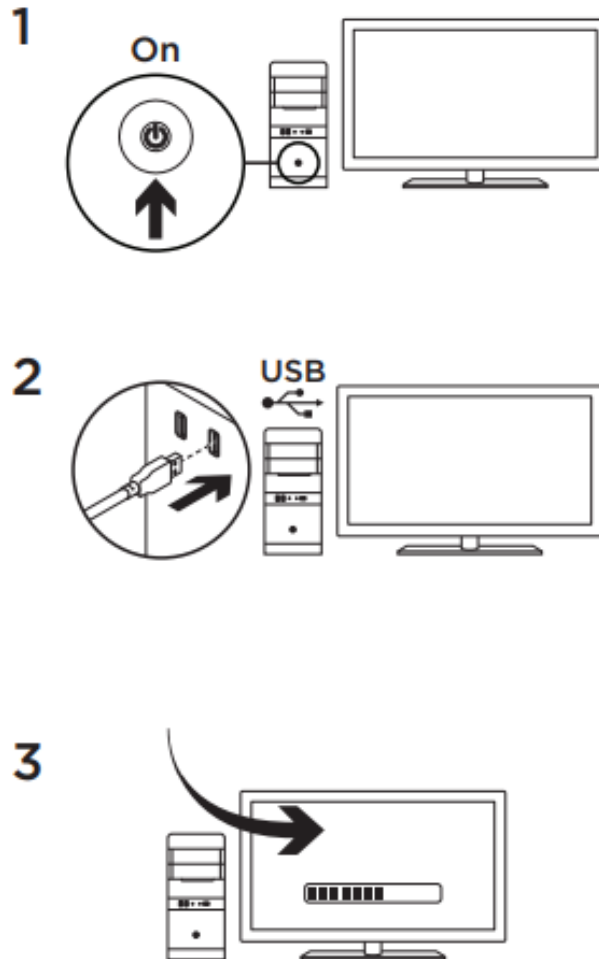


Logitech G402 Hyperion Fury Wireless Mouse



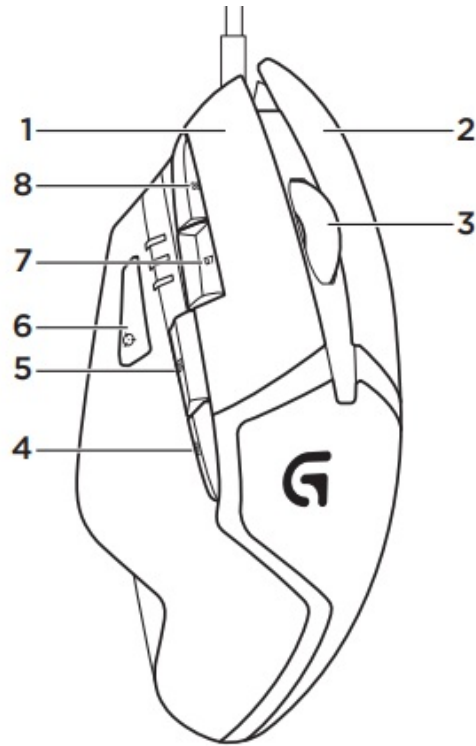
Logitech® G402 Hyperion Fury™

Setup Guide



- Your G402 Hyperion Fury is ready to play games. If you would like to customize your Hyperion Fury , refer to the next section.
- You can customize the onboard profile of the G402 Hyperion Fury—button programming and tracking behavior—using the Logitech Gaming Software. Download this free software and learn how to customize the Hyperion Fury at www.logitech.com/support/g402hyperionfury

fully programmable buttons



1. Left (Button 1)
2. Right (Button 2)
3. Wheel click (Button 3)
4. Back (Button 4)
5. Forward (Button 5)
6. DPI Shift (Button G6)
7. DPI Down (Button G7)
8. DPI Up (Button G8)

Default Settings

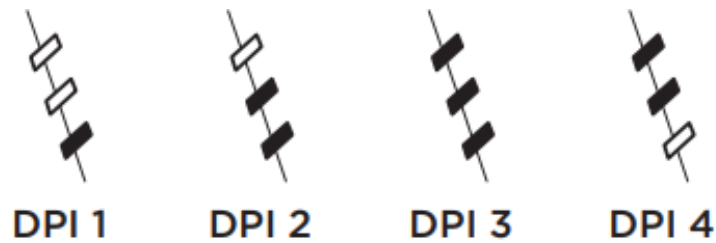
- **DPI Values:** 400/800/1600/3200
- **DPI Shift Value:** 400
- **USB Report Rate:** 1000/sec (1ms)
- **Logo lighting:** On, with breathing effect

Onboard profile

Hyperion Fury allows you to tweak your settings until they are perfect and store them in its onboard memory. You can adjust button functions, DPI values, USB report rate, and logo lighting style using the optional Logitech Gaming Software, available for download from www.logitech.com/support/g402hyperionfury.

DPI indicators

DPI values are shown using the three LEDs indicated in the mouse drawing. The image below shows which DPI value is being indicated by the LED panel.



Tips


Try the default profile settings in practice games before changing these settings. Advanced gamers can customize each game according to their specific button configuration and sensitivity switching needs. In automatic game detection mode, the Logitech Gaming Software stores this information and applies it automatically when the game is detected.

www.logitech.com

© 2014 Logitech. All rights reserved. Logitech, the Logitech logo, and other Logitech marks are owned by Logitech and may be registered. All other trademarks are the property of their respective owners. Logitech assumes no responsibility for any errors that may appear in this manual. Information contained herein is subject to change without notice.

621-000341.002

Documents / Resources

 <p>Logitech G Logitech® G402 Hyperion Fury™ Setup Guide Guide d'installation</p>	<p>Logitech G402 Hyperion Fury Wireless Mouse [pdf] User Guide G402 Hyperion Fury Wireless Mouse, G402, Hyperion Fury Wireless Mouse, Wireless Mouse, Mouse</p>
---	---

References

- [Logitech | Defy Logic - Tools to Create a Better Tomorrow](#)
- [Logitech Support + Download](#)
- [Logitech Support + Download](#)