

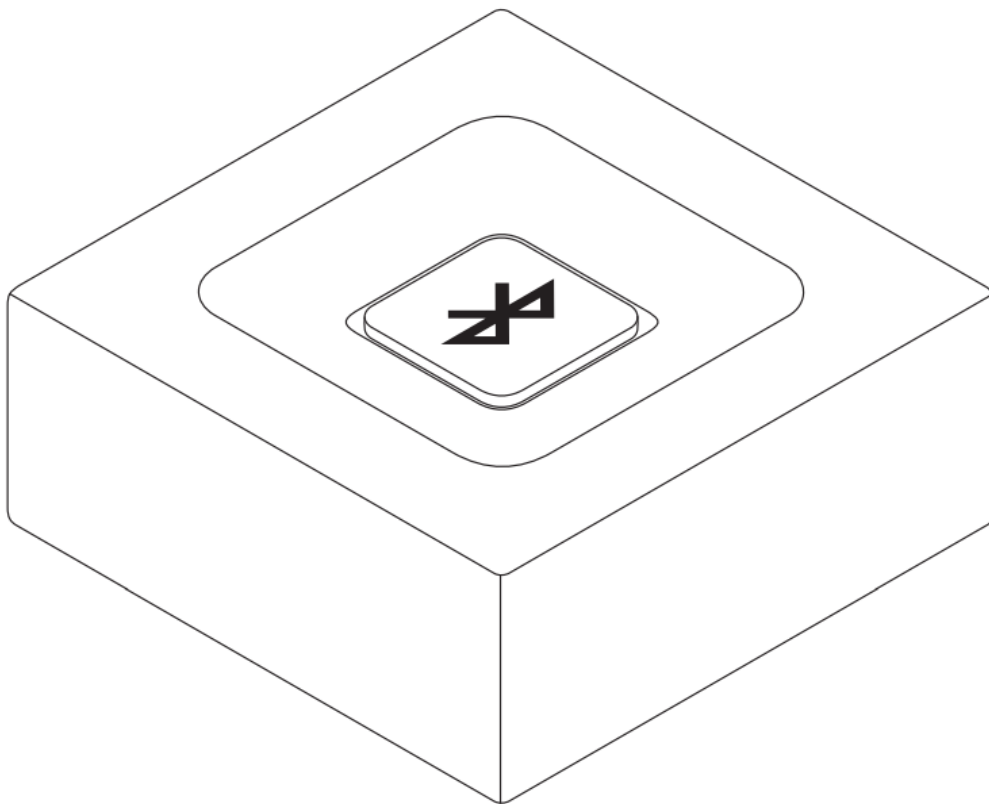


## logitech Bluetooth Audio Receiver User Guide

[Home](#) » [Logitech](#) » logitech Bluetooth Audio Receiver User Guide 

# logitech®

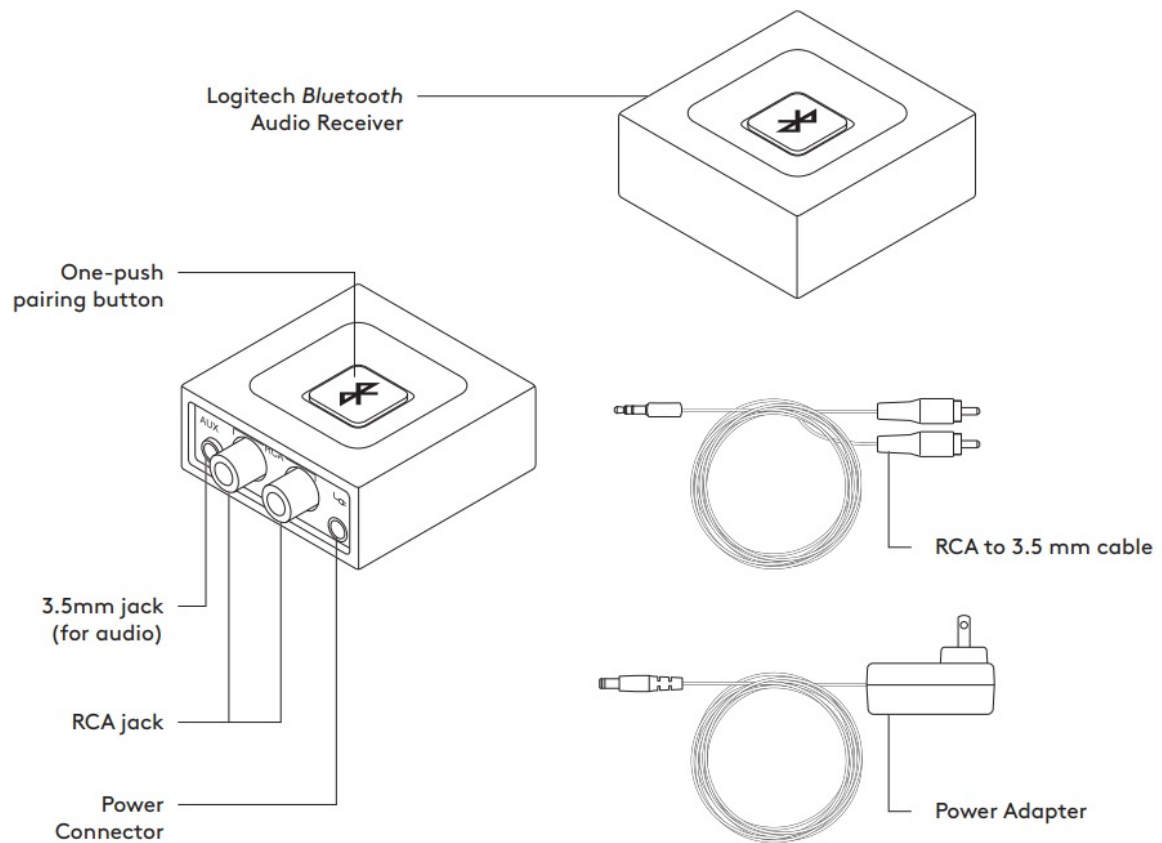
BLUETOOTH® AUDIO RECEIVER  
Complete Setup Guide



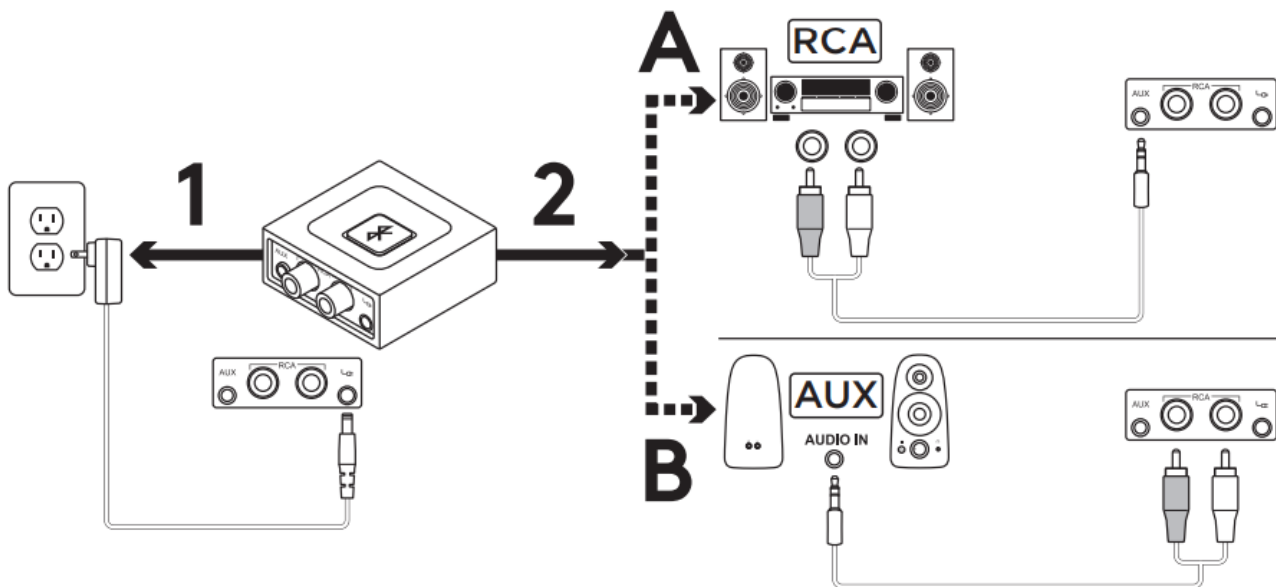
## Contents

- [1 KNOW YOUR PRODUCT](#)
- [2 CONNECT THE RECEIVER TO YOUR SPEAKERS](#)
- [3 CONNECT TO TWO DEVICES SIMULTANEOUSLY](#)
- [4 RECONNECT A BLUETOOTH DEVICE](#)
- [5 Documents / Resources](#)
- [6 Related Posts](#)

## KNOW YOUR PRODUCT



## CONNECT THE RECEIVER TO YOUR SPEAKERS



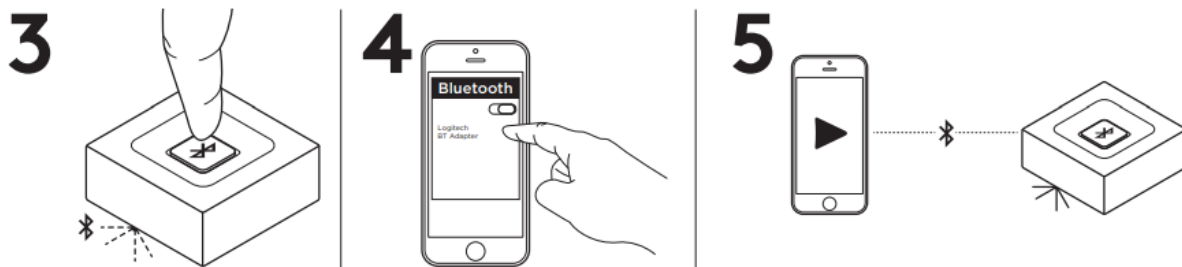
1. Connect the power supply to the Logitech Bluetooth Audio Receiver. Then plug the power plug into an electrical outlet.

2. A. If you have RCA input on your Speaker System:

- Connect RCA jack on the Speaker.
- Connect the other end of the cable to the Logitech Bluetooth Audio Receiver.

2B. If you have 3.5mm input on your Speaker System:

- Connect 3.5mm jack on the speaker.
- Connect the other end of the cable to the Logitech Bluetooth Audio Receiver.



3. Press the Bluetooth pairing button on the Logitech Bluetooth Audio Receiver. It will initiate the pairing and the LED will start blinking (for first time user, the pairing process will be initiated automatically).

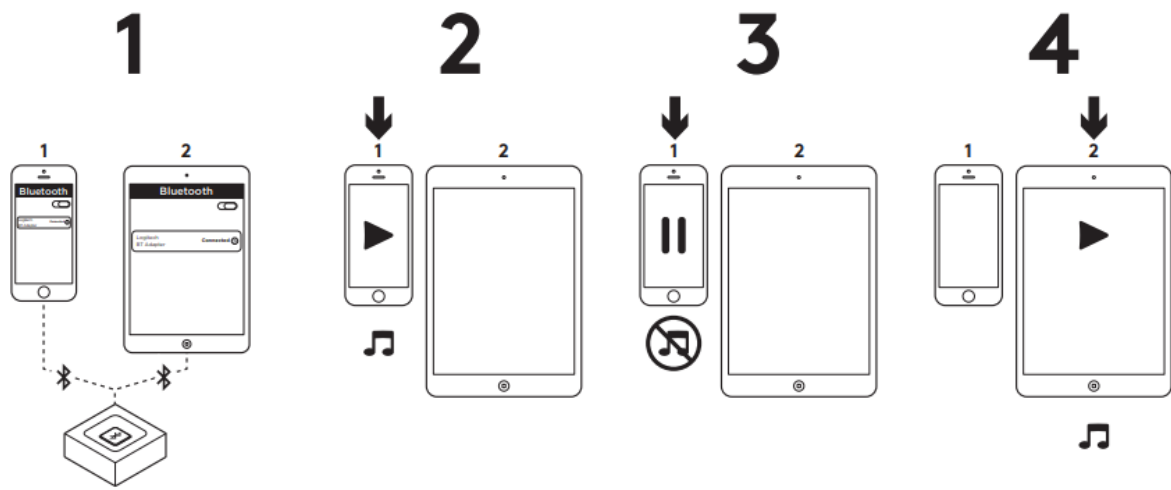
4. Turn on Bluetooth on your device and scan for Bluetooth devices. You will see “Logitech BT Adapter” on the device list.

Select and connect to it.

5. The LED will turn to a steady blue light. You can now play music through your audio device wirelessly.

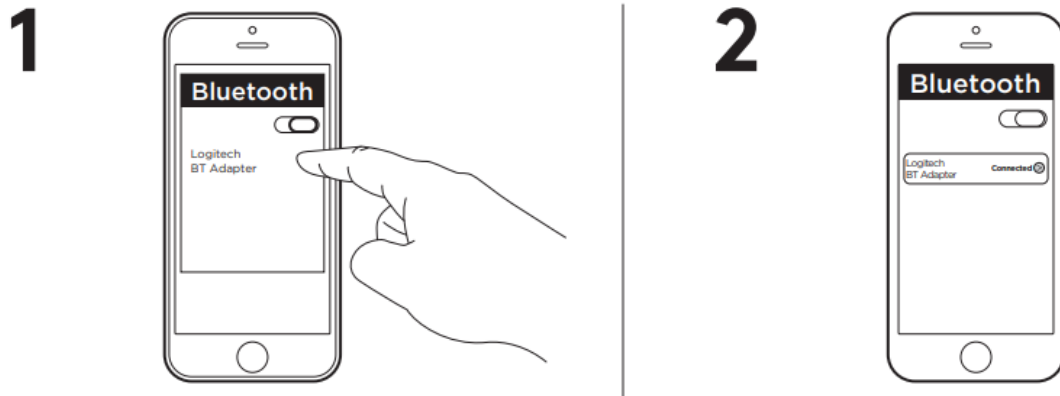
6. To connect your second device, repeat step 3 through step 5.

## CONNECT TO TWO DEVICES SIMULTANEOUSLY



1. Make sure that your two devices are connected to the Logitech Bluetooth Audio Receiver following the steps on the previous page. In case you were disconnected, please check your Bluetooth device list, select “Logitech BT Adapter” and reconnect.
2. Play music on device 1.
3. Pause music on device 1.
4. Start playing music on device 2, the audio will switch automatically and will stream from device 2.  
It may take a few seconds to switch between devices.

## RECONNECT A BLUETOOTH DEVICE



1. Logitech Bluetooth Audio Receiver will reconnect automatically to the latest connected device.
2. If you are not using the latest connected device and you want to reconnect to the Logitech Bluetooth Audio Receiver, you need to select Logitech BT Adapter in your Bluetooth device list on your device.
3. You are connected again to Logitech Bluetooth Receiver and can stream music again from your device.

**NOTE:** Logitech Bluetooth Audio Receiver can store up to eight Bluetooth devices in its memory (while two devices can connect simultaneously).


[www.logitech.com/support/bluetooth-audio-receiver](http://www.logitech.com/support/bluetooth-audio-receiver)

© 2019 Logitech. Logitech, Logi and other Logitech marks are owned by Logitech and may be registered. All other trademarks are the property of their respective owners.

Logitech assumes no responsibility for any errors that may appear in this manual.

Information contained herein is subject to change without notice.

Documents / Resources

 The image shows the front of a Logitech Bluetooth Audio Receiver box. At the top, it says "BLUETOOTH® AUDIO RECEIVER" and "Complete Setup Guide". In the center is a line drawing of the receiver device. At the bottom is the "logitech" logo.	<p><a href="#">logitech Bluetooth Audio Receiver</a> [pdf] User Guide</p> <p>SR0189, JNZSR0189, Bluetooth Audio Receiver, Bluetooth Receiver, Audio Receiver, Receiver</p>
---	--