



logitech Bluetooth Audio Receiver User Guide

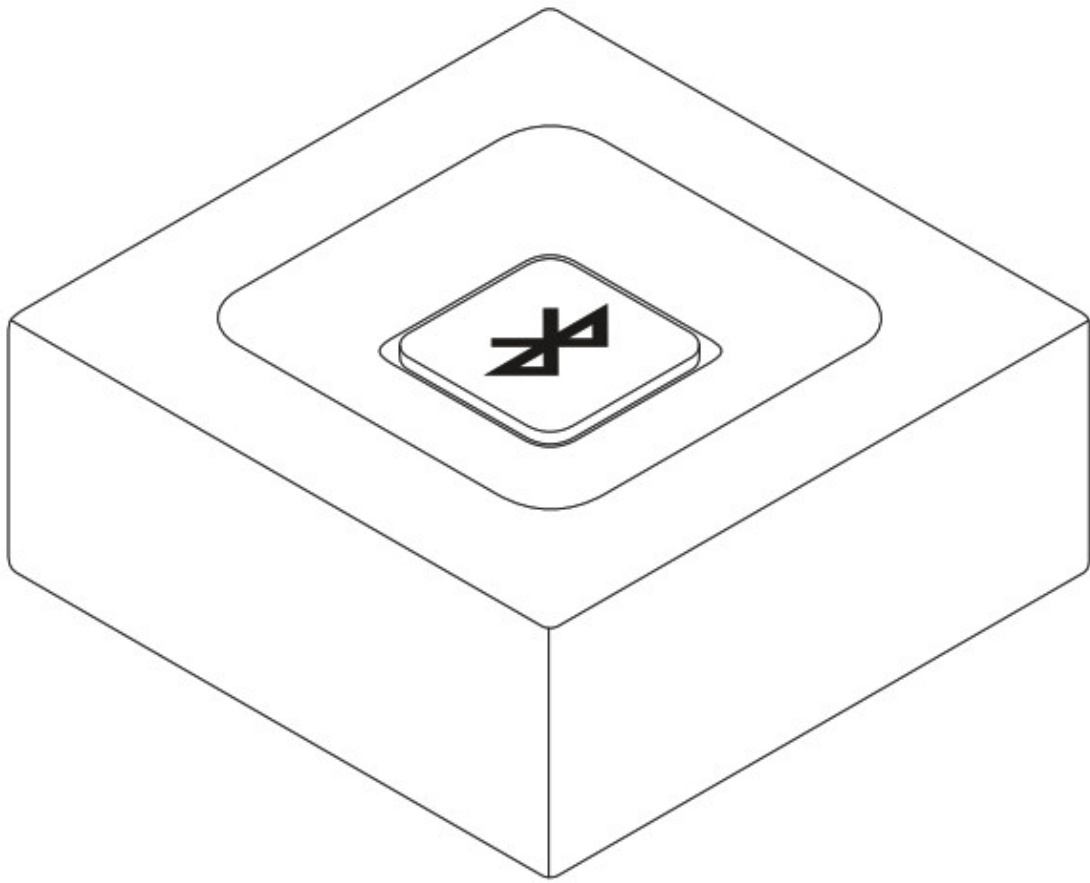
[Home](#) » [Logitech](#) » logitech Bluetooth Audio Receiver User Guide 

Contents

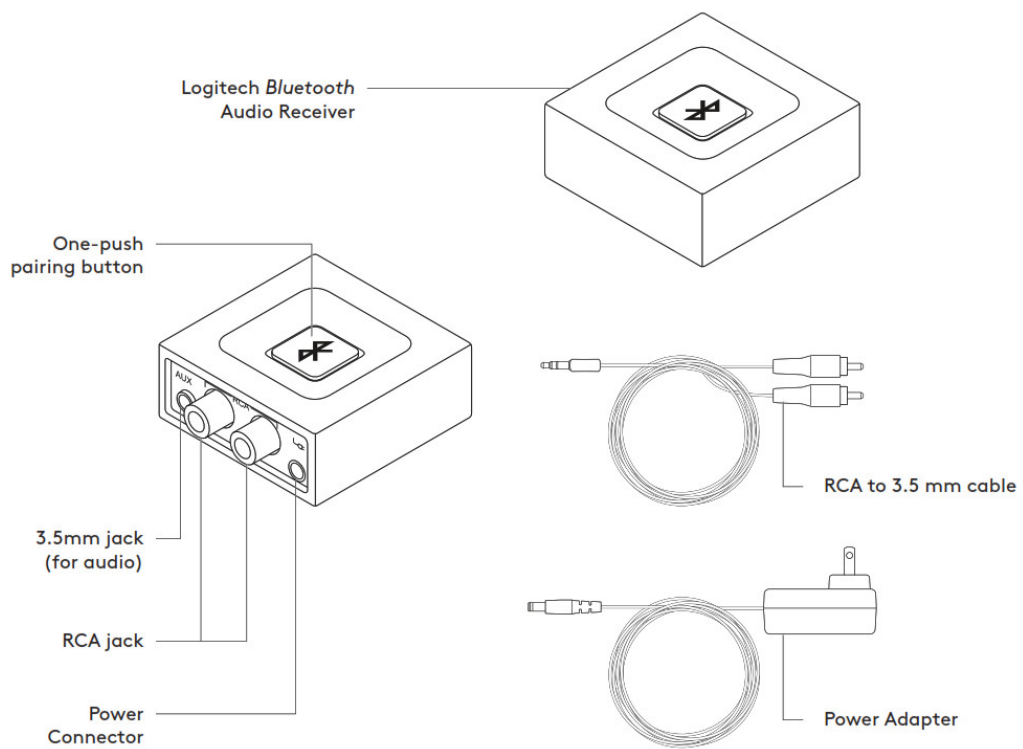
- [1 Logitech Bluetooth Audio Receiver User Guide](#)
- [2 KNOW YOUR PRODUCT](#)
- [3 CONNECT THE RECEIVER TO YOUR SPEAKERS](#)
- [4 CONNECT TO TWO DEVICES SIMULTANEOUSLY](#)
- [5 RECONNECT A BLUETOOTH DEVICE](#)
- [6 Specs & Details](#)
 - [6.1 Dimensions](#)
 - [6.2 Technical Specifications](#)
 - [6.3 Warranty Information](#)
 - [6.4 Part Number](#)
- [7 KEY FEATURES](#)
 - [7.1 EASY SETUP](#)
 - [7.2 SIMPLE BLUETOOTH PAIRING](#)
 - [7.3 MULTIPOINT BLUETOOTH](#)
- [8 FAQ – Bluetooth Audio Adapter](#)
 - [8.1 VIDEO – Set up the Bluetooth Audio Adapter?](#)
- [9 Documents / Resources](#)
 - [9.1 References](#)
- [10 Related Posts](#)

Logitech Bluetooth Audio Receiver User Guide

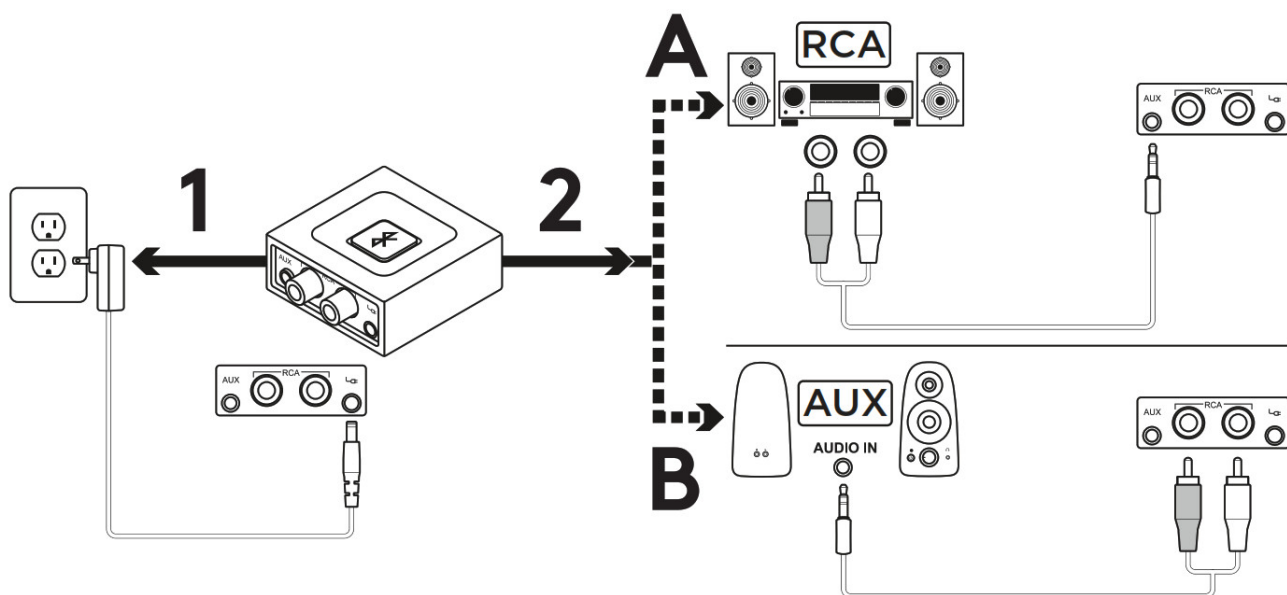
logitech[®]



KNOW YOUR PRODUCT



CONNECT THE RECEIVER TO YOUR SPEAKERS



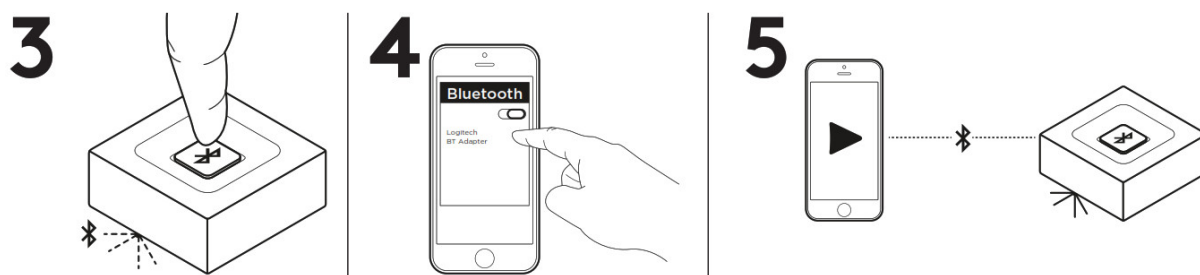
1. Connect the power supply to the Logitech Bluetooth Audio Receiver Then plug the power plug into an electrical outlet

2A If you have RCA input on your Speaker System:

- Connect RCA jack on the Speaker
- Connect the other end of the cable to the Logitech Bluetooth Audio Receiver

2B If you have 3 5mm input on your Speaker System:

- Connect 3 5mm jack on the speaker
- Connect the other end of the cable to the Logitech Bluetooth Audio Receiver



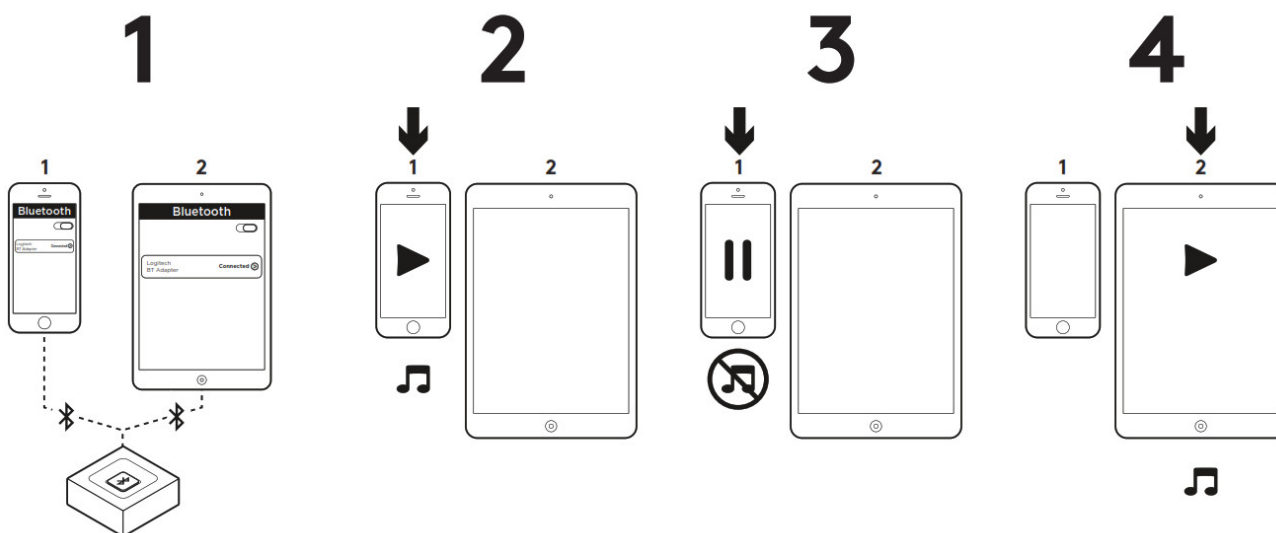
3. Press the Bluetooth pairing button on the Logitech Bluetooth Audio Receiver It will initiate the pairing and the LED will start blinking (for first time user, the pairing process will be initiated automatically)

4. Turn on Bluetooth on your device and scan for Bluetooth devices You will see “Logitech BT Adapter” on the device list Select and connect to it

5. The LED will turn to a steady blue light You can now play music through your audio device wirelessly

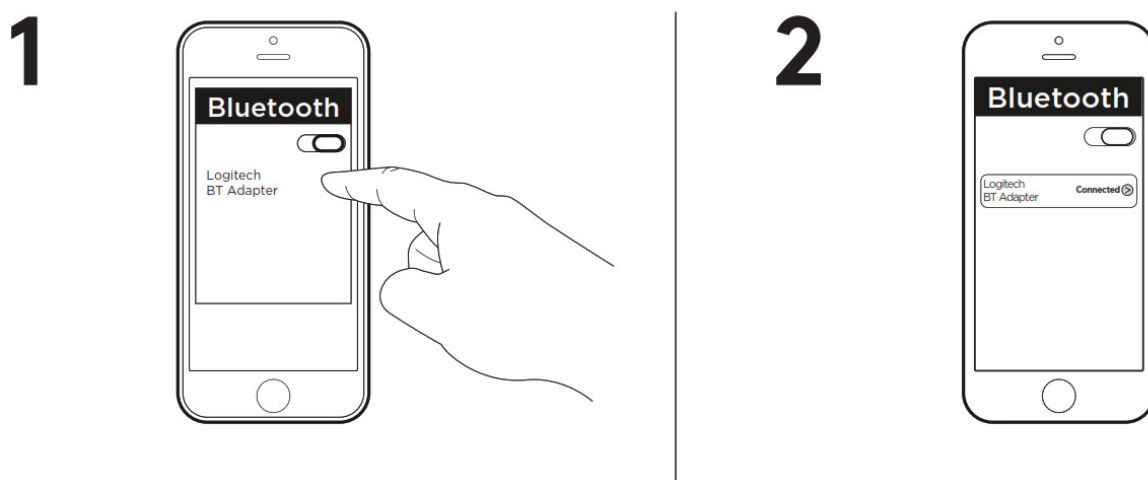
6. To connect your second device, repeat step 3 through step 5

CONNECT TO TWO DEVICES SIMULTANEOUSLY



1. Make sure that your two devices are connected to the Logitech Bluetooth Audio Receiver following the steps on the previous page In case you were disconnected, please check our Bluetooth device list, select “Logitech BT Adapter” and reconnect
2. Play music on device 1
3. Pause music on device 1
4. Start playing music on device 2, the audio will switch automatically and will stream from device 2 It may take a few seconds to switch between devices

RECONNECT A BLUETOOTH DEVICE



1. Logitech Bluetooth Audio Receiver will reconnect automatically to the latest connected device
2. If you are not using the latest connected device and you want to reconnect to the Logitech Bluetooth Audio Receiver, you need to select Logitech BT Adapter in your Bluetooth device list on your device
3. You have connected again to Logitech Bluetooth Receiver and can stream music again from your device

NOTE: Logitech Bluetooth Audio Receiver can store up to eight Bluetooth devices in its memory (while two devices can connect simultaneously)

www.logitech.com/support/bluetooth-audio-receiver

© 2019 Logitech. Logitech, Logi and other Logitech marks are owned by Logitech and may be registered. All other trademarks are the property of their respective owners. Logitech assumes no responsibility for any errors that may appear in this manual. Information contained herein is subject to change without notice.

Specs & Details

Dimensions

Height: 2.00 in (50.8 mm)

Width: 0.88 in (22.32 mm)

Depth: 2.25 in (57.15 mm)

Weight: 1.20 oz (34 g)

Technical Specifications

Multipoint Bluetooth

One-push pairing button

Reliable 590 in (15-meter) line of sight range

Warranty Information

1-Year Limited Hardware Warranty

Part Number

- 980-000910
-

KEY FEATURES

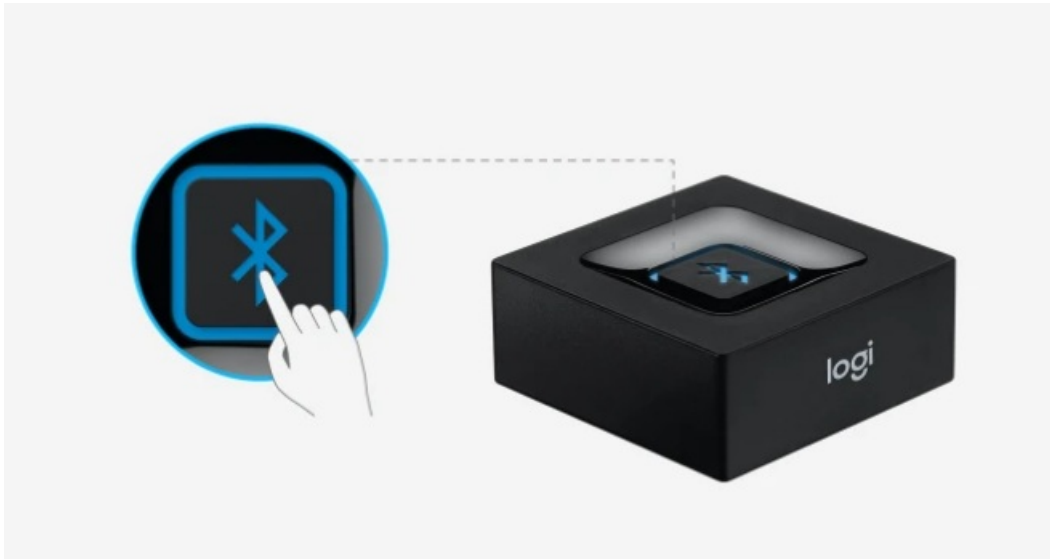
EASY SETUP

Easily connect most computer speakers, home stereo systems or AV receivers via the 0.14 in (3.5 mm) or RCA inputs. Plug the *Bluetooth* Audio Receiver into an AC power source.



SIMPLE *BLUETOOTH* PAIRING

Pair your *Bluetooth* enabled smartphone and tablet with a convenient, one-push pairing button. Device automatically reconnects when in range.



MULTIPOINT *BLUETOOTH*

Pair two *Bluetooth* enabled devices such as your smartphone and computer and switch between devices to stream audio wirelessly.



FAQ – Bluetooth Audio Adapter

VIDEO – Set up the Bluetooth Audio Adapter?

NOTE: To turn subtitles on and view machine-translation

Use the Bluetooth Speaker Adapter with multiple devices?

You can connect two devices to the Logitech Bluetooth Speaker Adapter at once, but only one device can stream to it at a time. The adapter will also prevent a device on standby from taking over the connection while the active device is streaming.

To stream from the device on standby:

- Pause or stop the stream from the active device.
- Begin the stream from the standby device.

NOTE:

The previously active device will now be on standby.

For help with connecting an additional device, see answer [360023421413](#).

Use the Logitech Bluetooth Speaker Adapter?

To use your Bluetooth Speaker Adapter, first you need to connect it to a set of powered speakers using either the 3.5mm auxiliary connection or RCA.

Next, connect your adapter to your Bluetooth source:

Mobile device

1. Connect your speaker adapter to a power source.

NOTE: If you're pairing for the first time, your adapter should already be in pairing mode with the Bluetooth connection LED blinking.

2. On your mobile device, go to the Bluetooth menu and scan for Bluetooth devices.
3. Locate **Logitech BT Adapter** in the list of available devices and tap it to connect. Once the connection is established, the LED on your adapter should go from blinking to solid.

Windows

1. Connect your speaker adapter to a power source.

NOTE: If you're pairing for the first time, your adapter should already be in pairing mode with the Bluetooth connection LED blinking.

2. Open your **Control Panel**.
3. Select **Hardware and Sound**.
4. Select **Devices and Printers**.
5. Select **Bluetooth Devices**.
6. Click **Add a device**.
7. Select **Logitech BT Adapter** from the list of devices, and then click **Next**.

Once your Logitech Bluetooth Adapter is paired and connected, you'll need to select it as the default playback device in the Windows Sound Settings. Here's how:

1. Open your **Control Panel**.
2. Select **Hardware and Sound**.
3. Select **Manage audio devices** (under Sound).
4. Select "Speakers Bluetooth Hands-free-audio" and click **Set Default**.
5. Click **OK**.

NOTE: Your PC may install additional native drivers during the connection process. No additional drivers from Logitech are required. The Bluetooth adapter on your PC must support the A2DP profile.

Macintosh

1. Connect your speaker adapter to a power source.

NOTE: If you're pairing for the first time, your adapter should already be in pairing mode with the Bluetooth connection LED blinking.

2. From the Apple menu, select System Preferences.
3. Click "+" to add a new Bluetooth device.
4. Select **Logitech BT Adapter** from the list of available devices and click **Continue**.

Once your Logitech BT Adapter is paired and connected, you'll need to select it as the default output device in System Preferences. Here's how: From the Apple menu, select **System Preferences**.

1. Select **Sound**.
2. On the **Output** tab, select **Logitech BT adapter**.
3. Close **System Preferences**.

Connecting additional devices

Your Logitech Bluetooth Speaker Adapter supports two connected devices. To connect additional devices, press the Bluetooth connection button on top of the adapter. This will initiate pairing mode. Follow the steps above to

connect a second device to the adapter. If you're currently connected to another device, it will temporarily disconnect from that device to connect to the additional device. For help with using your adapter with two devices, see answer [360023260634](#).

Audio skips or cuts out when streaming to the Bluetooth Speaker Adapter?

If you have issues with the audio stream skipping or cutting out or skipping when streaming to your Bluetooth Speaker Adapter, try the following:

- Move the audio source closer — it might be out of the range of your speaker adapter.
- Move away from other sources of wireless signal – you could be experiencing interference.
- Adjust the volume on the audio source and speakers.
- Restart both your speaker adapter and the audio source.


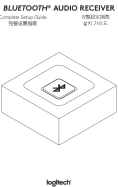
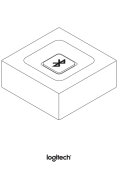
NOTE: If you're streaming audio content from the internet, the issue could be with the internet connection and not your speaker.

Audio does not stream when Bluetooth Audio Adapter is connected to a computer

Your Bluetooth Speaker Adapter can connect to Bluetooth capable computers. No additional drivers are needed from Logitech.

The Logitech Bluetooth Adapter streams audio through the A2DP Bluetooth Profile. Your computer's Bluetooth adapter must support this profile for you to stream audio to the Logitech Bluetooth Adapter. The adapter may install even if your computer's adapter doesn't support this profile, but you won't be able to stream audio. For more help, see your computer's support documentation.

Documents / Resources

	Logitech Bluetooth Audio Receiver [pdf] User Guide Bluetooth Audio Receiver
	Logitech Bluetooth Audio Receiver [pdf] Installation Guide logitech, Audio Receiver
	Logitech Bluetooth Audio Receiver [pdf] User Guide Bluetooth Audio Receiver

References

-  [Logitech Support + Download Sustainability Navigation](#)