



logitech Bluetooth Audio Adapter User Manual

[Home](#) » [Logitech](#) » logitech Bluetooth Audio Adapter User Manual 

Contents

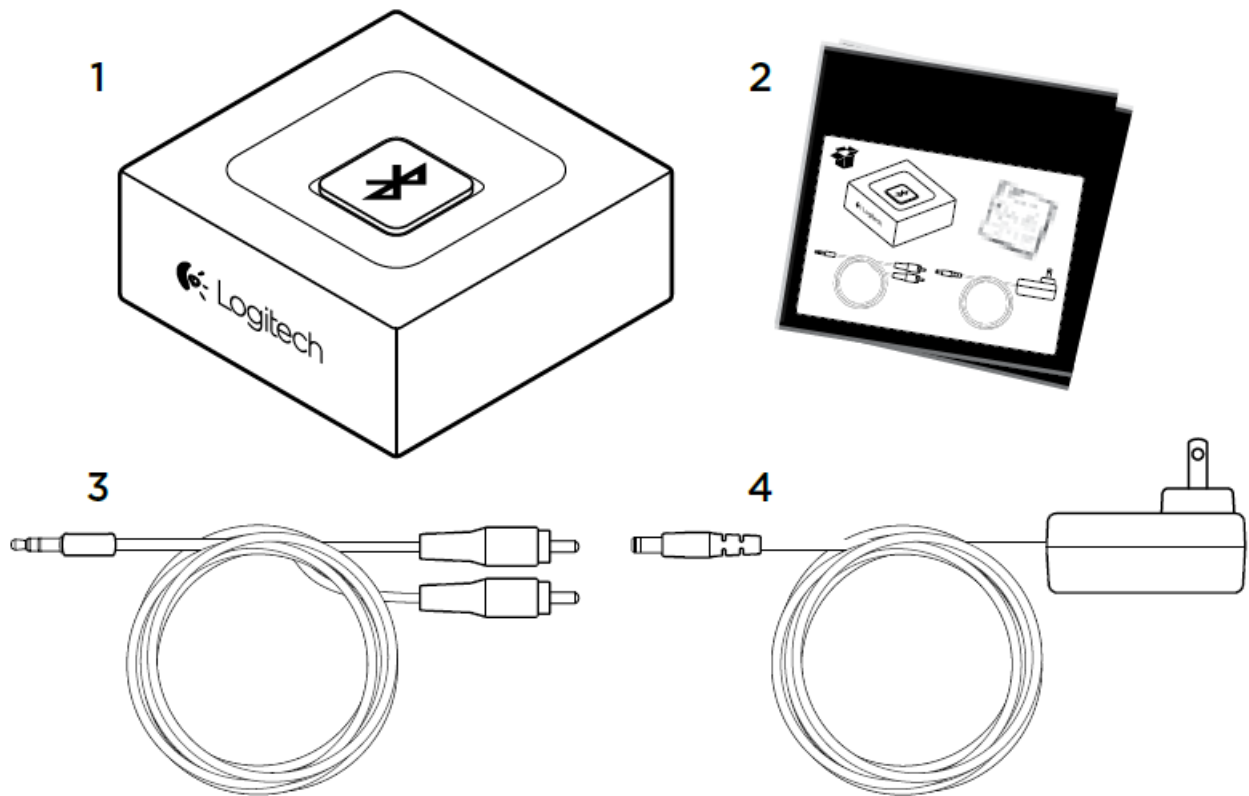
- [1 logitech Bluetooth Audio Adapter](#)
- [2 What's in the box](#)
- [3 Set-up](#)
- [4 Connecting to two devices simultaneously](#)
- [5 Documents / Resources](#)
 - [5.1 References](#)
- [6 Related Posts](#)



logitech Bluetooth Audio Adapter

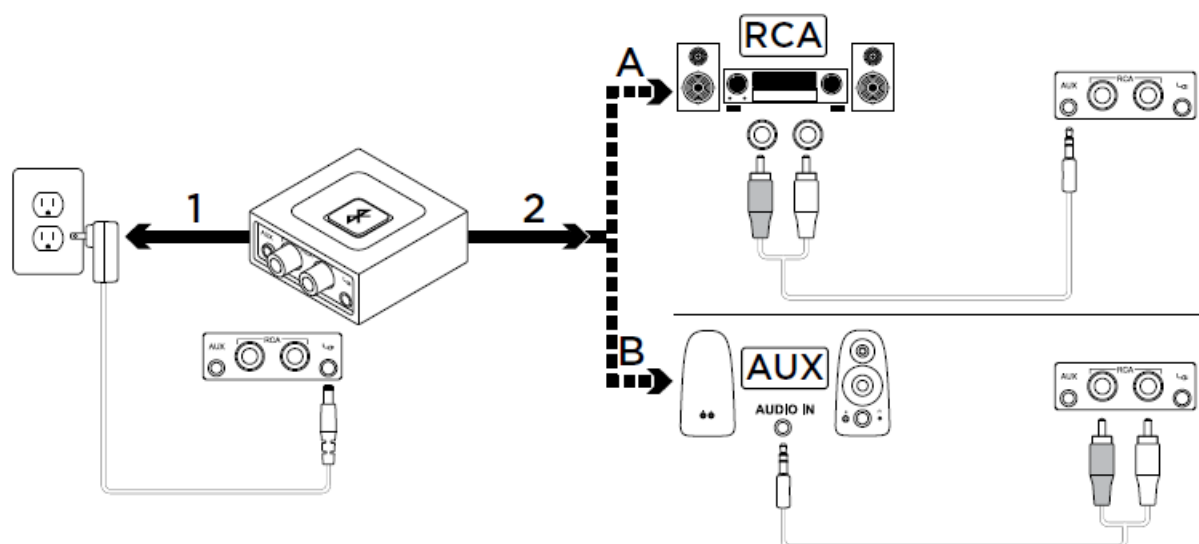


What's in the box



1. Logitech Bluetooth® Audio Adapter
2. User documentation
3. RCA to 3.5mm cable
4. Power adapter

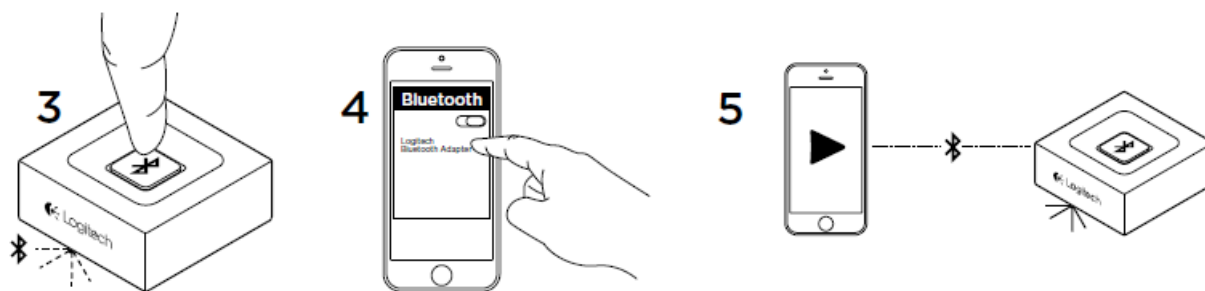
Set-up



1. Connect the power supply to the Logitech Bluetooth Audio Adapter. Then plug the power cord into electrical outlet.
2. **A.** If you have RCA outlet on your Speaker System then:
 1. Connect RCA jack on the Speaker.
 2. Connect the other hand of the cable to Logitech Bluetooth Audio Adapter.

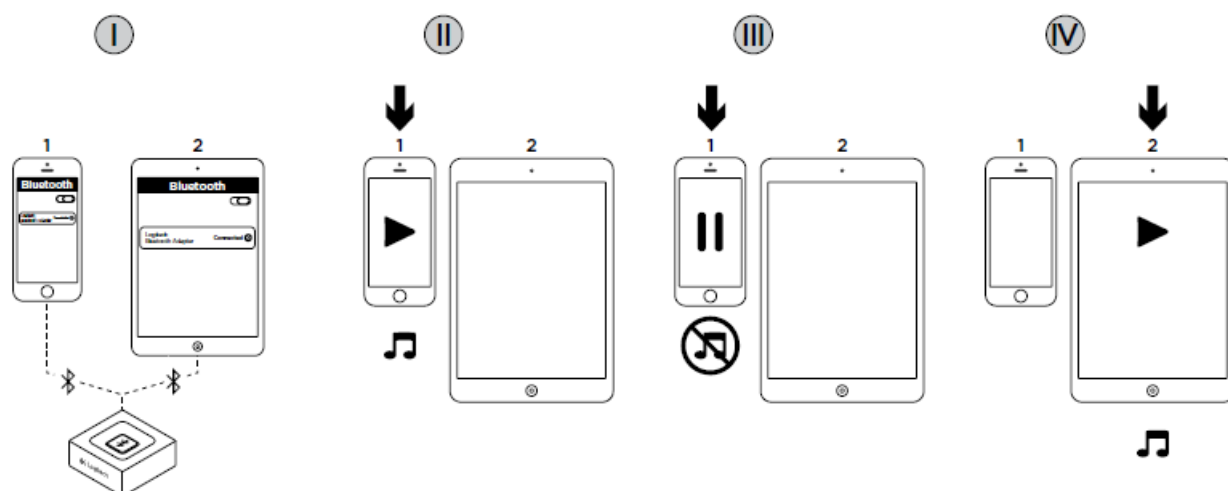
3. **B.** If you have 3.5mm outlet on your Speaker System then:

1. Connect 3.5mm jack on the Speaker.
2. Connect the other hand of the cable to Logitech Bluetooth Audio Adapter.



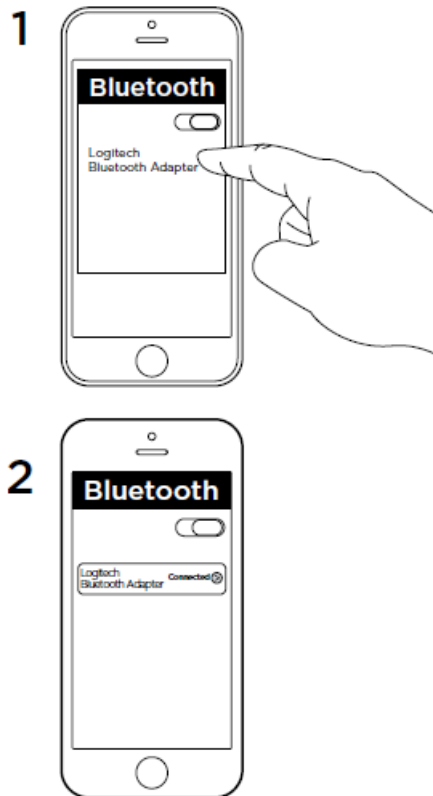
4. Press the Bluetooth pairing button on Logitech Bluetooth Audio Adapter. It will initiate the pairing and the LED will start blinking (for first time user, the pairing process will be initiated automatically).
5. Turn the Bluetooth mode ON (on your device) and scan for Bluetooth devices. You will see “Logitech BT Adapter” on the device list. Select and connect to it. “Logitech BT Adapter” will display a connected status.
6. The LED will turn into steady blue. You can now play music through your audio device wirelessly!

Connecting to two devices simultaneously



- I. Make sure that your two devices are connected to Logitech Bluetooth Audio Adapter following step 1 to 5 of the set-up. In case you were disconnected, please check your Bluetooth device list, select “Logitech BT Adapter” and reconnect.
- II. Play music on device 1.
- III. Stop playing music on device 1.
- IV. Start playing music on device 2, the audio would switch automatically and will stream from device 2. It may take a few seconds to switch between devices

Reconnecting a Bluetooth device



Logitech Bluetooth Audio Adapter will reconnect automatically to the latest connected device. If you are not using the latest connected device and you want to reconnect to Logitech Bluetooth Audio Adapter, you need to select Logitech Bluetooth Audio Adapter in your Bluetooth device list on your device (1). You are then connected again to Logitech Bluetooth Adapter and can stream music again from your device (2).

Add devices


Logitech Bluetooth Audio Adapter can store up to eight Bluetooth devices in its memory (Two devices can connect simultaneously). For setting-up each device, follow the set-up instructions.

www.logitech.com/support/bluetooth-audio-adapter

© 2014 Logitech. All rights reserved. Logitech, the Logitech logo, and other Logitech marks are owned by Logitech and may be registered. Bluetooth® is a registered trademark of Bluetooth SIG, Inc. All other trademarks are the property of their respective owners. Logitech assumes no responsibility for any errors that may appear in this manual. Information contained herein is subject to change without notice.

621-000363.002

Documents / Resources

	<p>logitech Bluetooth Audio Adapter [pdf] User Manual Bluetooth Audio Adapter, Bluetooth Adapter, Audio Adapter, Adapter</p>
---	--

References

- [Logitech Support + Download](#)

