

**logitech**  
**B220**  
**Silent**  
**Wireless**  
**Mouse**



## logitech B220 Silent Wireless Mouse User Guide

[Home](#) » [Logitech](#) » logitech B220 Silent Wireless Mouse User Guide 

### Contents

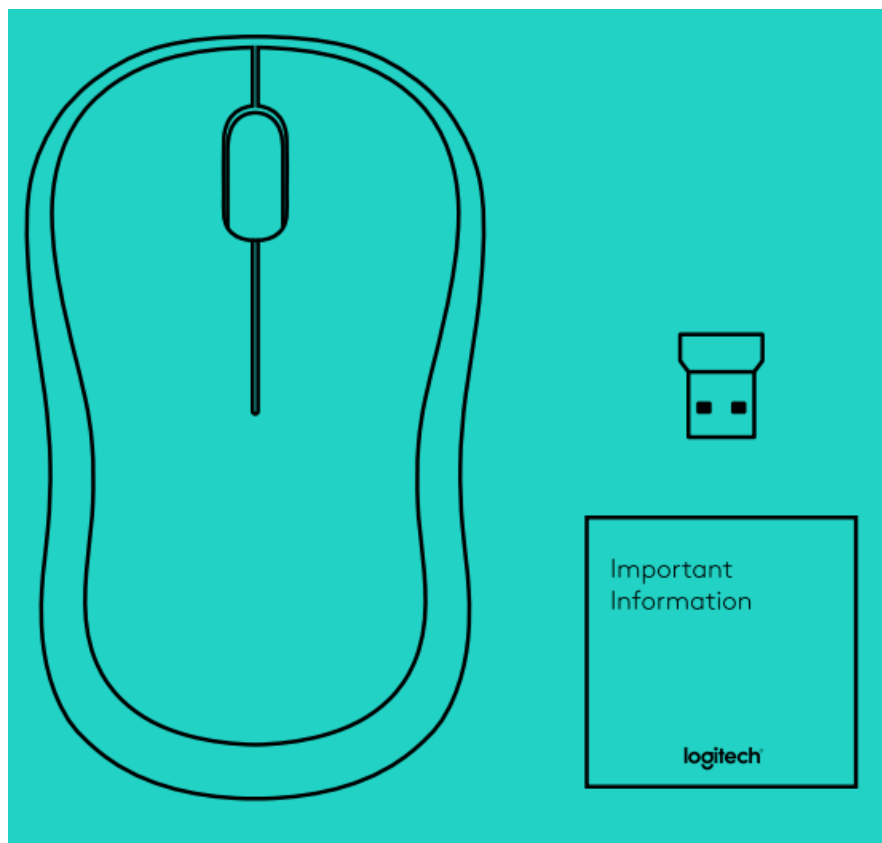
- [1 logitech B220 Silent Wireless Mouse](#)
- [2 What In Box](#)
- [3 Battery Replacement](#)
- [4 Connection](#)
- [5 MOUSE FEATURES](#)
- [6 TROUBLESHOOTING](#)
- [7 Documents / Resources](#)
  - [7.1 References](#)

# logitech

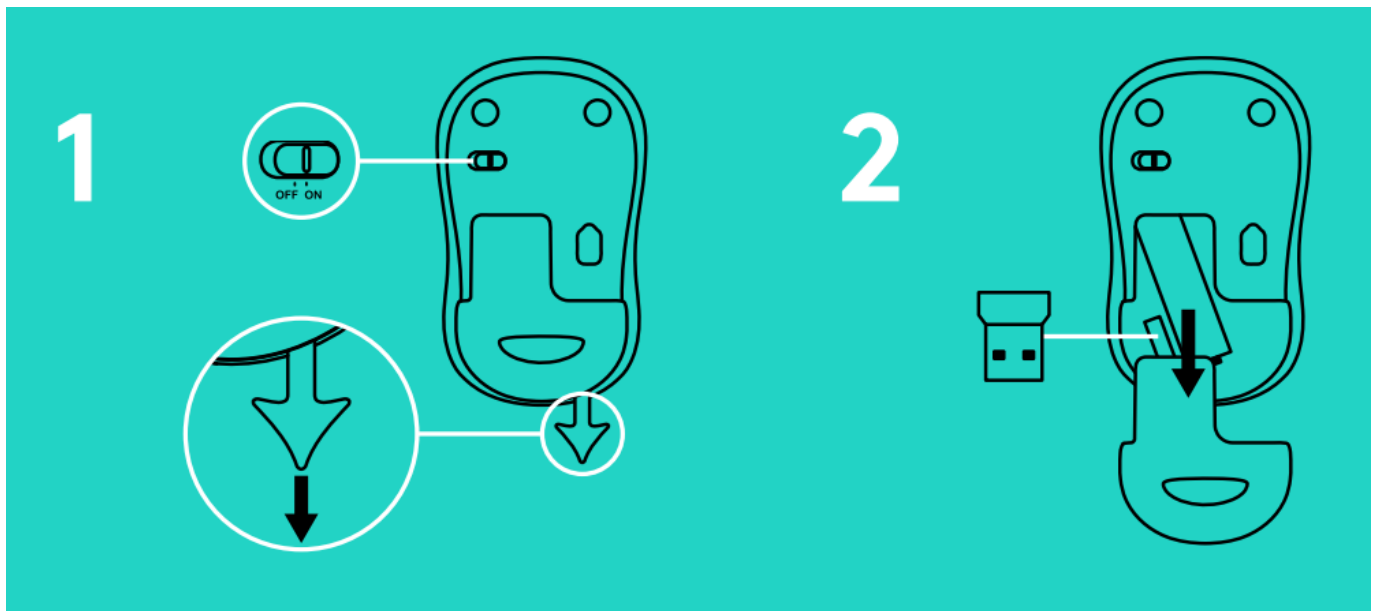
**logitech B220 Silent Wireless Mouse**



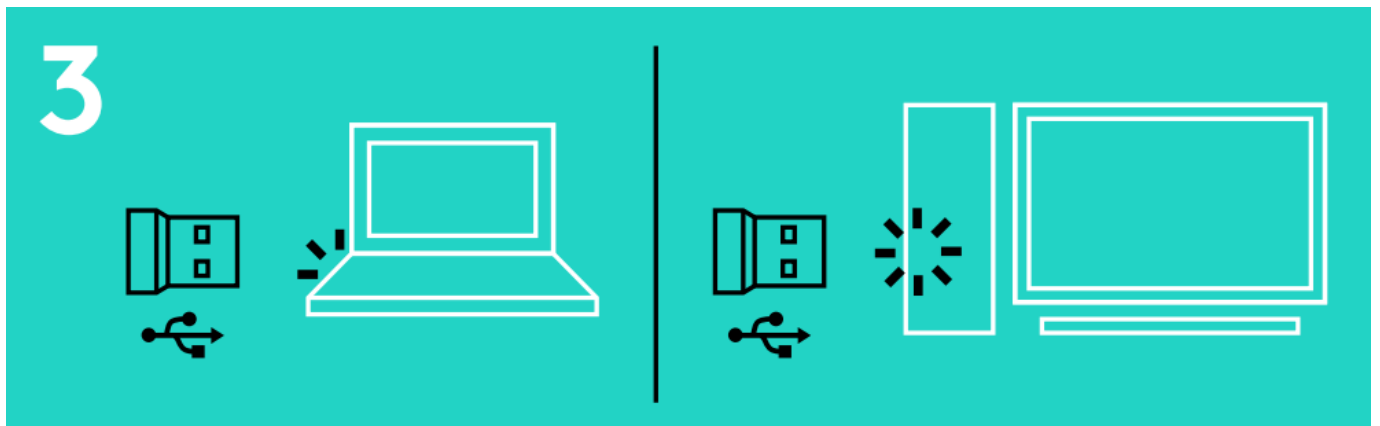
## What In Box



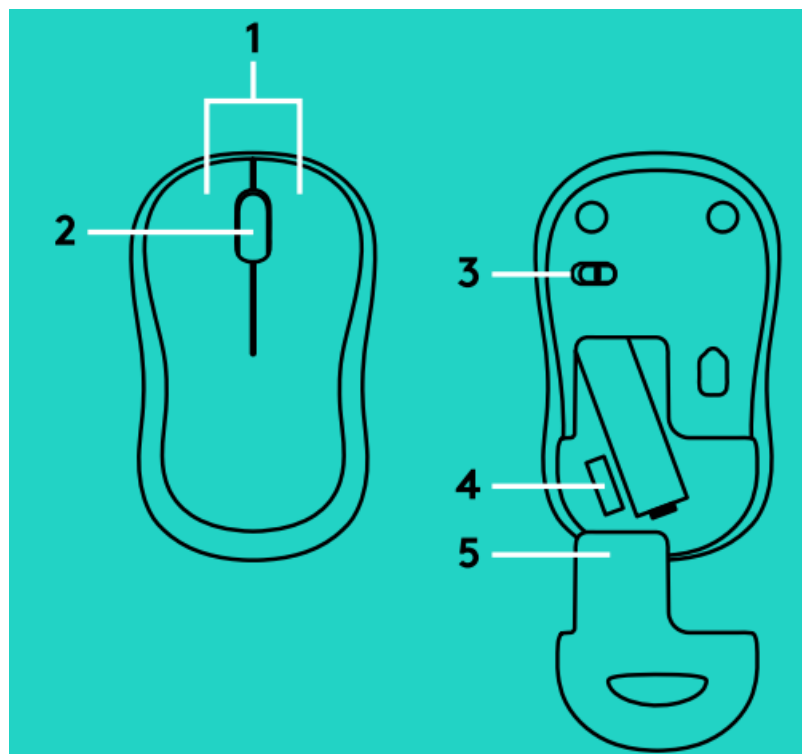
## Battery Replacement



## Connection



## MOUSE FEATURES



1. Left and right buttons

## 2. Scroll wheel

Press the wheel down for middle click.

Function can vary by software application.

## 3. On/Off slider switch

## 4. Battery door release


## 5. USB Nano receiver storage

# TROUBLESHOOTING


## The mouse is not working

- Is the mouse powered on?
- Is the receiver securely plugged into a USB port? Try changing USB ports.
- If the receiver is plugged into a USB hub, try plugging it directly into a USB port on your computer.
- Check the orientation of the battery inside the mouse.
- Try a different surface. Remove metallic objects between the mouse and the receiver.
- Try moving the receiver to a USB port closer to the mouse.
- For Windows® operating systems, reconnect the mouse with the receiver by launching the Connect utility from [www.logitech.com/connect\\_utility](http://www.logitech.com/connect_utility)

## Documents / Resources

	<a href="#">logitech B220 Silent Wireless Mouse</a> [pdf] User Guide B220 Silent Wireless Mouse, B220, Silent Wireless Mouse, Wireless Mouse, Mouse
---	--

## References

-  [One moment, please...](#)
- [User Manual](#)

[Manuals+.](#) [Privacy Policy](#)

This website is an independent publication and is neither affiliated with nor endorsed by any of the trademark owners. The "Bluetooth®" word mark and logos are registered trademarks owned by Bluetooth SIG, Inc. The "Wi-Fi®" word mark and logos are registered trademarks owned by the Wi-Fi Alliance. Any use of these marks on this website does not imply any affiliation with or endorsement.