



Logicbus WISE-7xxx Series Programmable Compact Embedded Module User Guide

[Home](#) » [Logicbus](#) » Logicbus WISE-7xxx Series Programmable Compact Embedded Module User Guide 

Contents

- [1 Logicbus WISE-7xxx Series Programmable Compact Embedded Module Welcome](#)
- [2 What's In The Box](#)
- [3 Technical Support](#)
- [4 Configure Boot Mode](#)
- [5 Connect to Network, PC and Power](#)
- [6 Install MiniOS7 Utility](#)
- [7 Assign a New IP by MiniOS7 Utility](#)
- [8 Go to WISE-7xxx Web Site to edit control logic](#)
- [9 Documents / Resources](#)
 - [9.1 References](#)
- [10 Related Posts](#)



Logicbus WISE-7xxx Series Programmable Compact Embedded Module



Welcome

Thank you for purchasing WISE-7xxx – one of the most cost-effective automation solutions for remote monitoring and control applications. This Quick Start Guide will provide you with minimum information to get started with WISE-7xxx. It is intended for use only as a quick reference. For more detailed information and procedures, please refer to the full user manual on the CD included in this package.

What's In The Box

In addition to this guide, the package includes the following items:



**WISE-71xx / WISE-790x
Series Module**



**WISE-72xx
Series Module**



**WISE-75xxM
Series Module**



**Software Utility
CD**

Technical Support

- **WISE-71xx / WISE-72xx User Manual**
CD : \WISE-71xx\document\User Manual\
ftp://ftp.icpdas.com/pub/cd/wise_cd/wise-71xx/document/user manual/
- **WISE-75xxM User Manual**
CD : \WISE-75xxM\document\User Manual\
ftp://ftp.icpdas.com/pub/cd/wise_cd/wise-75xxM/document/user manual/
- **WISE-790x User Manual**
CD : \WISE-790x\document\User Manual\
ftp://ftp.icpdas.com/pub/cd/wise_cd/wise-790x/document/user manual/
- **WISE Website**

<http://wise.icpdas.com/>

- ICP DAS Website

<http://www.icpdas.com/>

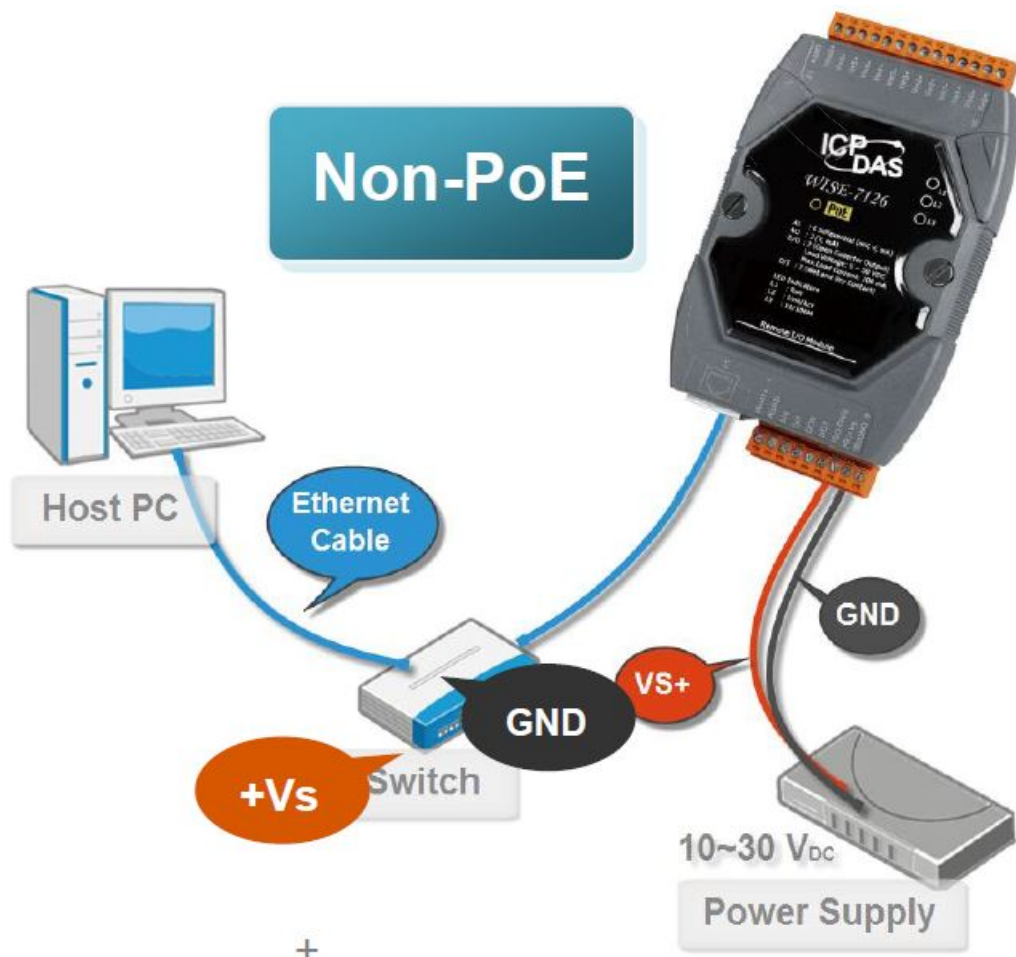
Configure Boot Mode

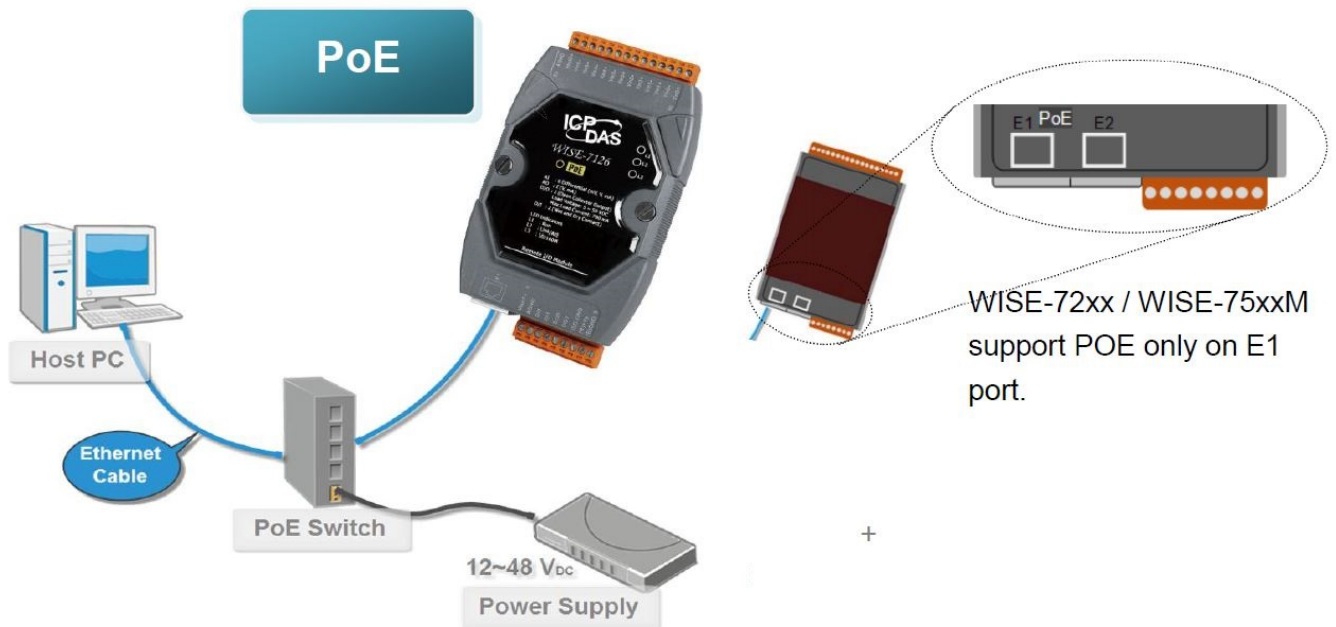
Make sure the switch is in the “Normal” position. (except WISE-75xxM)



Connect to Network, PC and Power

Connect to Ethernet hub/switch and PC via the RJ-45 Ethernet port.





Install MiniOS7 Utility

Step 1: Get the MiniOS7 Utility tool

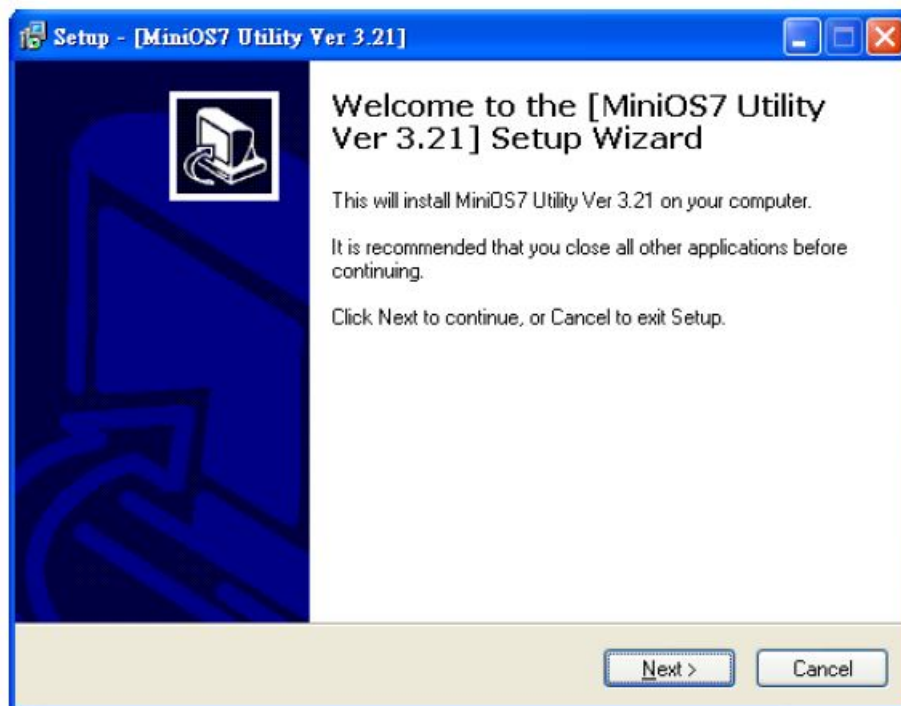


The MiniSO7 Utility can be obtained from companion CD or our FTP site: CD: \Tools\MiniOS7_Utility\
ftp://ftp.icpdas.com/pub/cd/wise_cd/tools/minios7utility/

Step 2: Follow the prompts to complete the installation



After the installation has been completed, a new short-cut for MiniOS7 Utility will appear on the desktop.

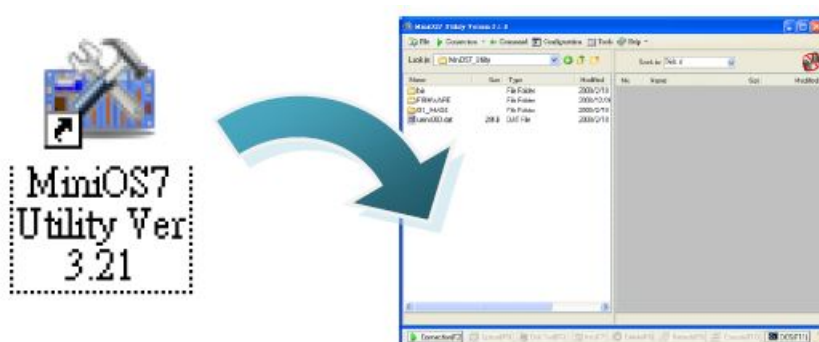


Assign a New IP by MiniOS7 Utility

WISE-7xxx comes with a default IP address; please assign a new IP address to the WISE module. The factory default IP settings are as follows:

Item	Default
IP Address	192.168.255.1
Subnet Mask	255.255.0.0
Gateway	192.168.0.1

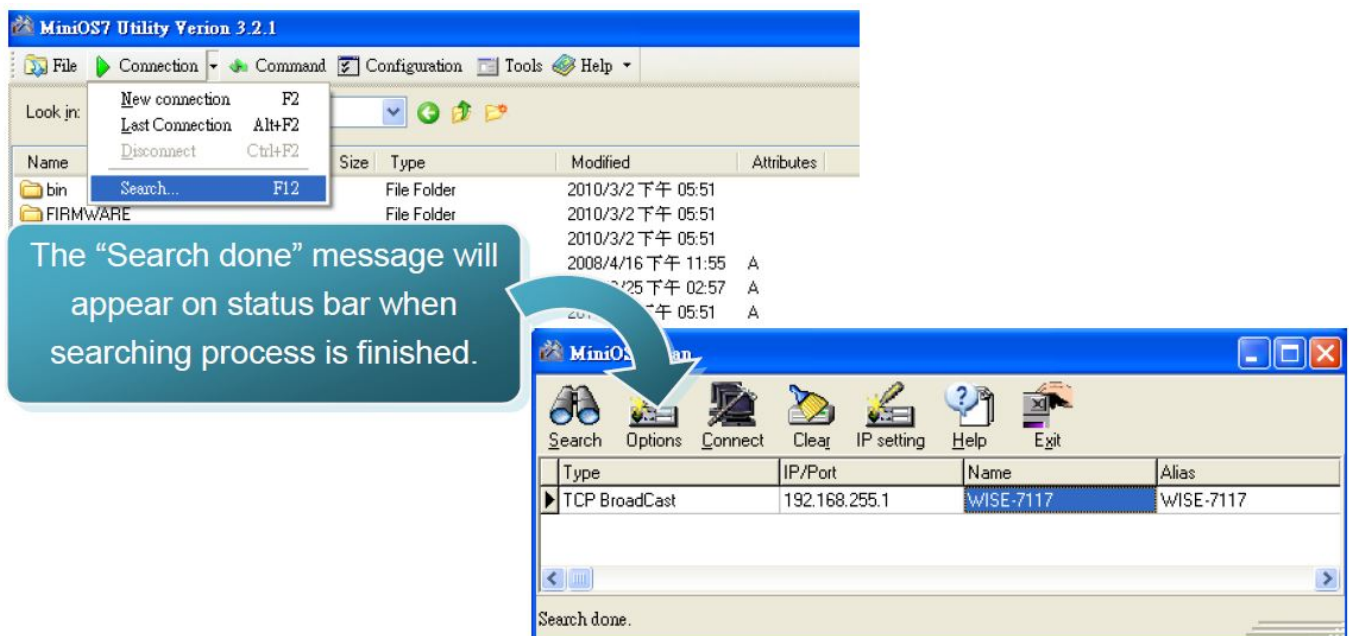
Step 1: Run MiniOS7 Utility



Double-click the MiniOS7 Utility shortcut on your desktop.

Step 2: Press “F12” or click “Search” from the “Connection” menu

Press “F12” or click “Search” from the Connection menu, a MiniOS7 Scan dialog will appear and will display all the MiniOS7 modules that are currently connected to your network.

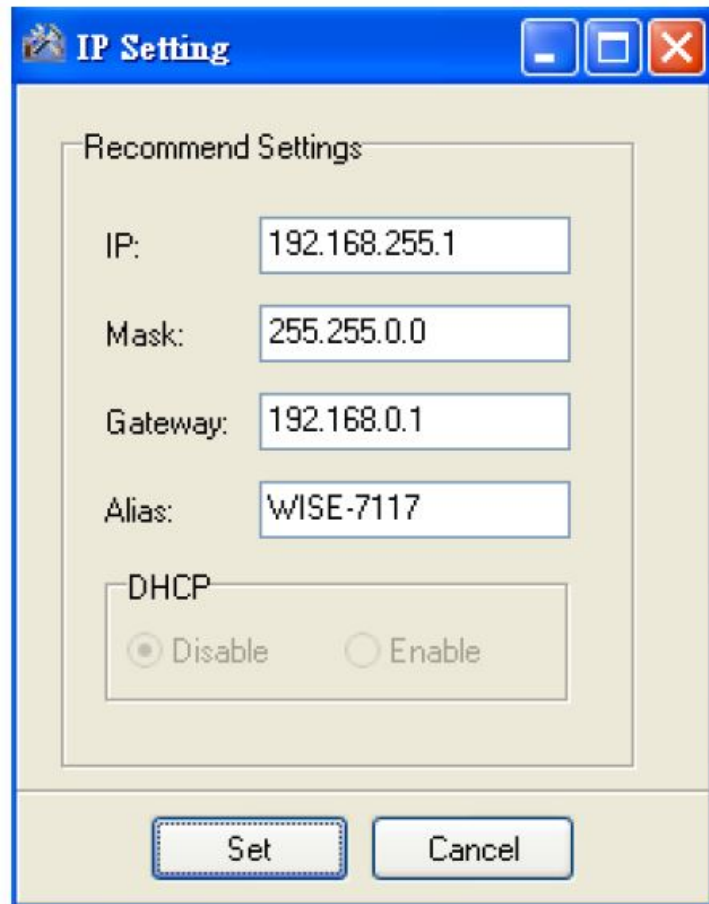


Step 3: Select the module name and then click "IP setting" from the toolbar

Select the module name from the list of the fields, and then click "IP setting" from the toolbar.

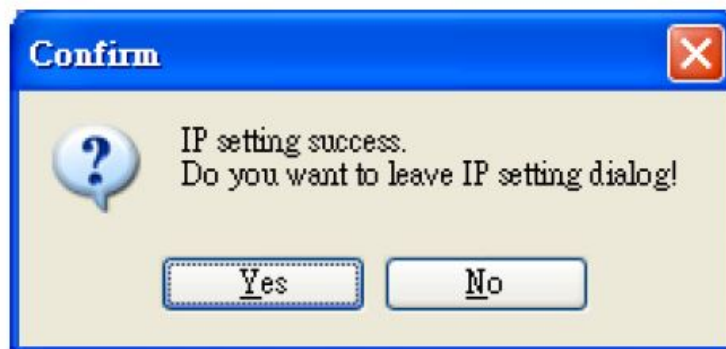


Step 4: Assign a new IP address and then click "Set" button



Step 5: Click “Yes” button

After completing the settings, click the “Yes” button to save and exit the procedure.



Go to WISE-7xxx Web Site to edit control logic

Please follow the steps below to implement IF-THEN-ELSE control logic on controllers:

Step 1: Open a browser

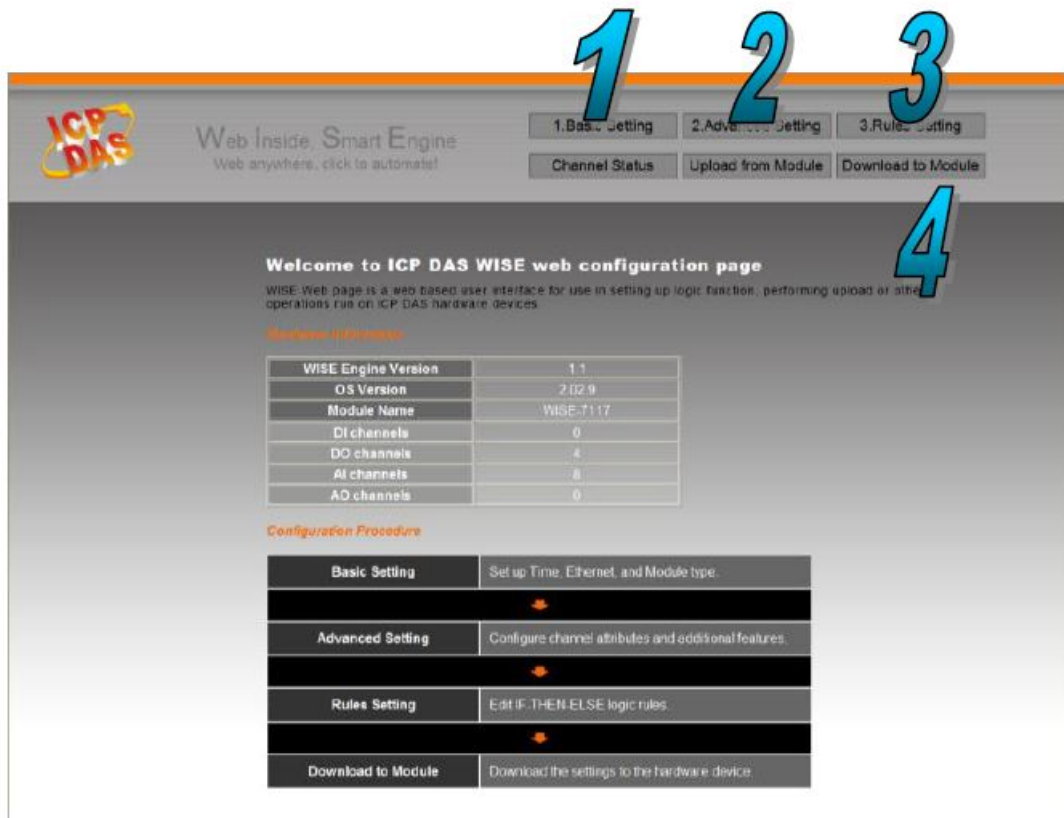
Open a browser (recommended internet browsers: Mozilla Firefox or Internet Explorer).

Step 2: Type in the URL address of the WISE-7xxx

Make sure the IP address assigned is accurate (please refer to section 4: “Assign a New IP by MiniOS7 Utility”). Type in the URL address of the WISE-7xxx module in the address bar.

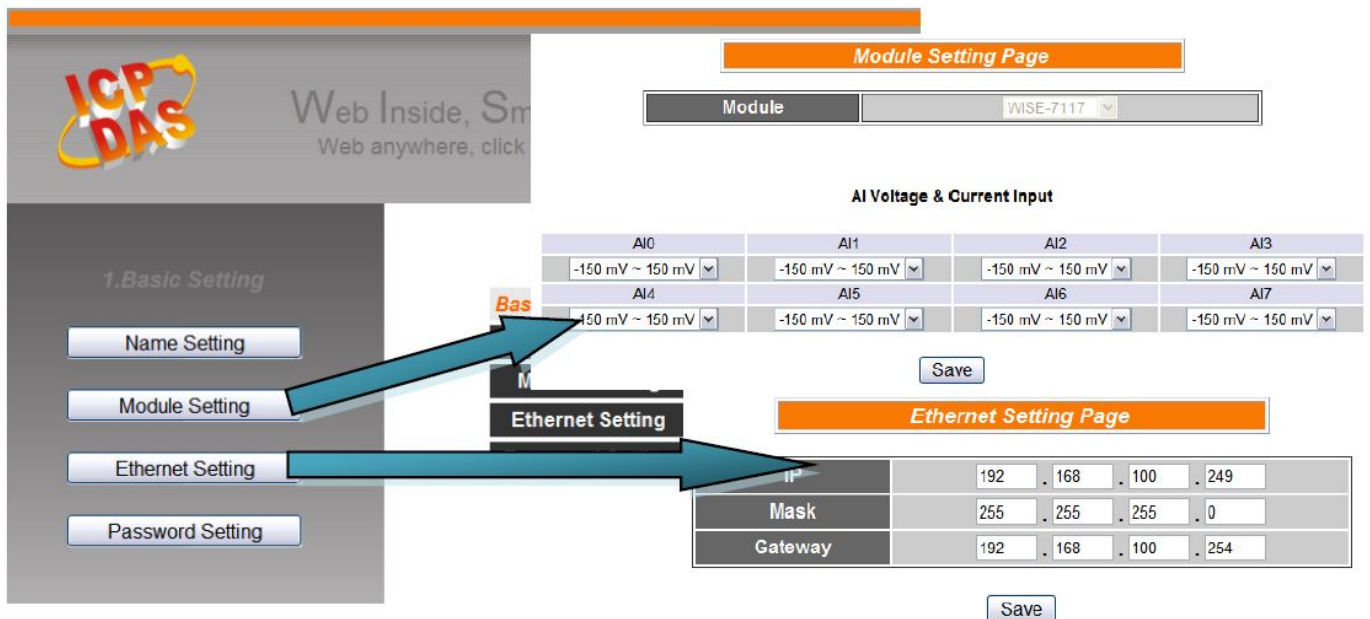
Step 3: Get on the WISE-7xxx web site

Get on the WISE-7xxx web site. Implement the control logic configuration in the order as indicated in the diagram.



Step 4: Edit Basic Settings

Modify the Alias of the WISE module, Ethernet setting of the WISE module, the analog input/output range, or the downloading password in the Basic Setting page as needed.



Step 5: Edit Advanced Settings

Edit channel attribute, internal register, Timer, Email, CGI commands, Recipe, and P2P configuration settings in

the Advanced Setting page as needed.

ICP DAS Web Inside, Smart Engine
Web Anywhere, Automation Anywhere!

2. Advanced Setting

- DI Attribute Setting
- DO Attribute Setting
- AI Attribute Setting
- AO Attribute Setting
- Internal Register Setting
- Timer Setting
- E-mail Setting
- CGI Command Setting
- Recipe Setting
- P2P Setting

DO Attribute Setting Page

Module & Channel: WISE-7117 Channel: 0
Power On Value: OFF

Counter: Disable
Initial Value: 0

Enable Pulse Output

Pulse High: 0 X 10ms
Pulse Low: 0 X 10ms

Timer Setting Page

Timer Amount: 0

Index: [Dropdown]
Period: 0 Sec
Initial Status: Stop

Recipe Attribute Setting Page

Recipe Amount: 0

Index: [Dropdown]
Action: None [Add]

[Edit] [Delete] [Up] [Down] [Clear All]

[Save]

Step 6: Edit Rule Settings

Edit your IF-THEN-ELSE rules in the Rules Setting page.

ICP DAS Web Inside, Smart Engine
Web anywhere, click to automate!

1. Basic Setting 2. Advanced Setting 3. Rules Setting

Channel Status Upload from Module Download to Module

3. Rules Setting

Rule Manager

Copy Reset
Reorder Swap

Enable No. Edit Status

- ☐ Rule 1 [Edit]
- ☐ Rule 2 [Edit]
- ☐ Rule 3 [Edit]
- ☐ Rule 4 [Edit]
- ☐ Rule 5 [Edit]
- ☐ Rule 6 [Edit]

Rules Setting Page

Rule 1

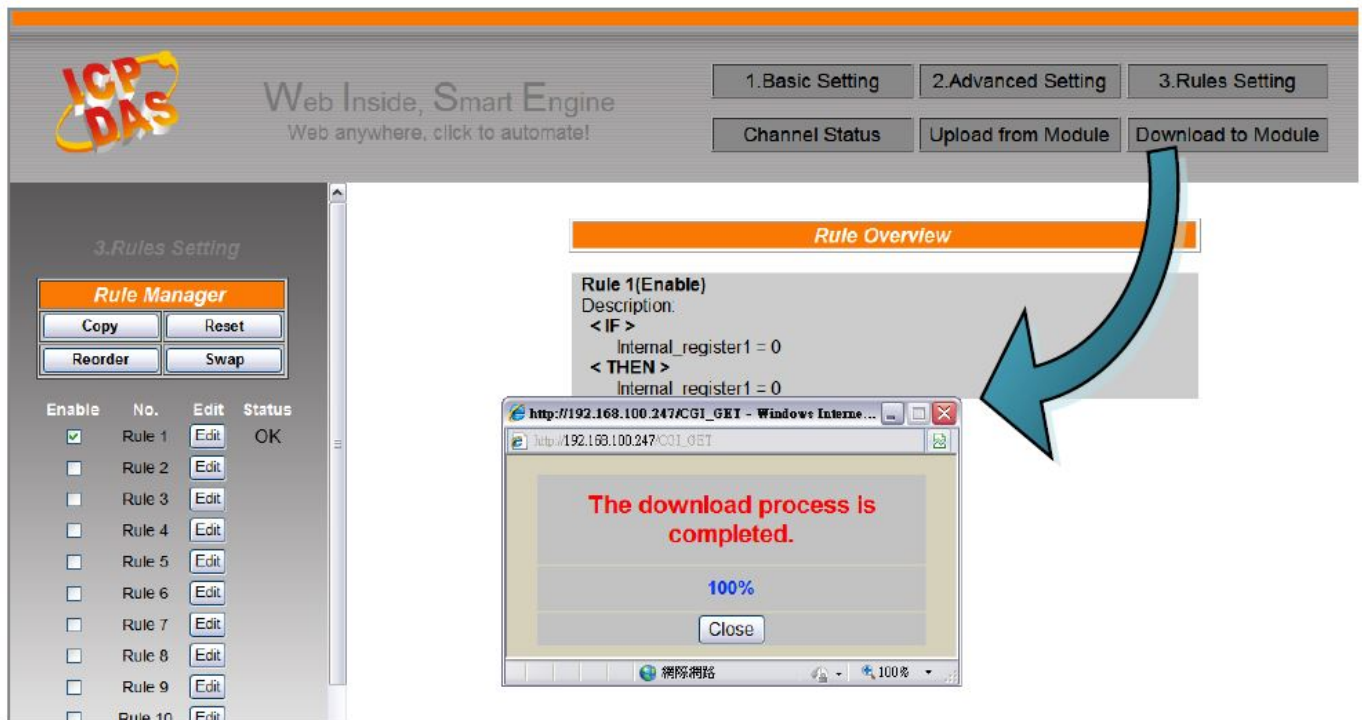
Description: [Text Field]

IF		THEN		ELSE	
Condition1	None	Action1	None	Action1	None
Condition2	None	Action2	None	Action2	None
Condition3	None	Action3	None	Action3	None
Operator	None				

[Clear] [Save]

Step 7: Download to Module

After finishing rules setting, download the rules to the WISE module. The WISE module will reboot and execute the rules automatically.



Step 8: For more detail information, please refer to WISE User Manual

Documents / Resources

	<p>Logicbus WISE-7xxx Series Programmable Compact Embedded Module [pdf] User Guide WISE-7xxx Series Programmable Compact Embedded Module, WISE-7xxx Series, Programmable Compact Embedded Module, Compact Embedded Module, Embedded Module, Module</p>
--	---

References

- wise.icpdas.com/
- [ICP DAS](#)