



Logicbus WISE-580x Series WISE IO Module Intelligent Data Logger PAC Controller User Guide

[Home](#) » [Logicbus](#) » Logicbus WISE-580x Series WISE IO Module Intelligent Data Logger PAC Controller User Guide 

Contents

- 1 Logicbus WISE-580x Series WISE IO Module Intelligent Data Logger PAC Controller
- 2 WHAT'S INCLUDE
- 3 Technical Support
- 4 Configuring Boot Mode
- 5 Connecting to PC, Network and Power
- 6 Installing the MiniOS7 Utility
- 7 Using MiniOS7 Utility to Assign a New IP
- 8 Go to WISE-580x Web Site to edit Control Logic
- 9 Documents / Resources
 - 9.1 References
- 10 Related Posts



Logicbus WISE-580x Series WISE IO Module Intelligent Data Logger PAC Controller



Thank you for purchasing WISE-580x – the Intelligent Data Logger PAC controller for remote monitoring and control application. This Quick Start Guide will provide you with minimum information to get started with WISE-580x. It is intended for use only as a quick reference. For more detailed information and procedures, please refer to the full user manual on the CD included in this package.

WHAT'S INCLUDE

In addition to this guide, the package includes the following items:



**WISE-580x
Series Module**



**Software
Utility CD**



**2G microSD
card**



**RS-232 cable
(CA-0910)**



**Screw Driver
(1C016)**

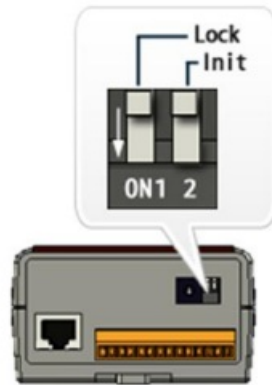


**GSM Antenna
(ANT-421-02)
Only for WISE-5801**

Technical Support

- WISE-580x User Manual
CD: WISE-580x\document\User Manual
<http://ftp.icpdas.com/pub/cd/wisecd/wise-580x/document/user manual/>
- WISE Website
<http://wise.icpdas.com/index.html>
- ICP DAS Website
<http://www.icpdas.com/>

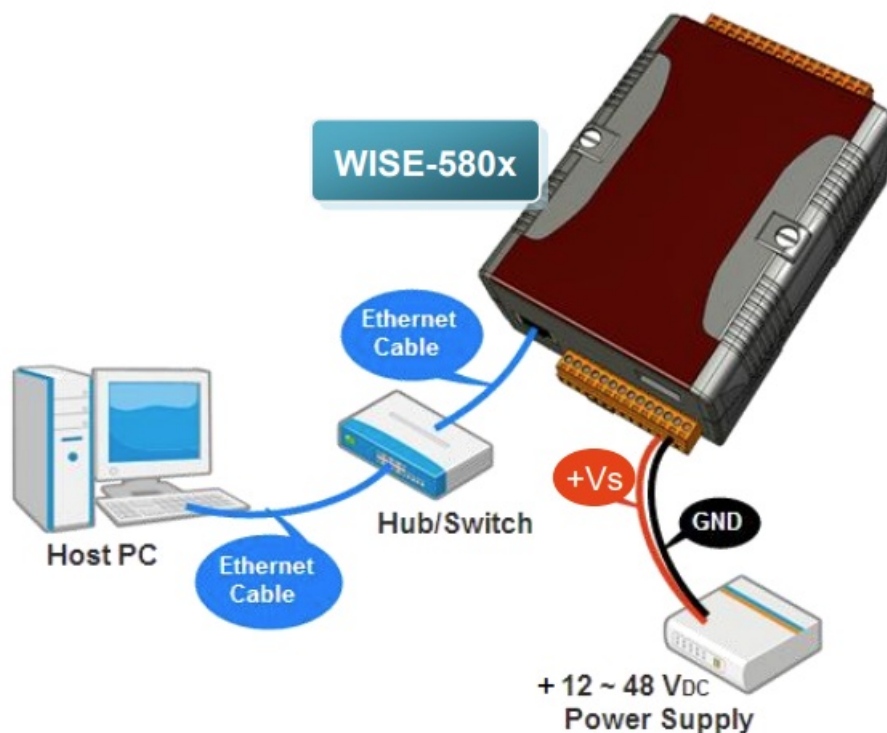
Configuring Boot Mode



Make sure the “Lock” switch placed in the “OFF” position, and the “Init” switch placed in the “OFF” position.

Connecting to PC, Network and Power

The WISE-580x is equipped with an RJ-45 Ethernet port for connection to an Ethernet hub/switch and PC. You can also link directly the WISE-580x to PC with an Ethernet cable.



Installing the MiniOS7 Utility

1. Step 1: Get the MiniOS7 Utility

The MiniOS7 Utility can be obtained from companion CD or our FTP site: CD:\Tools\MiniOS7 Utility\

ftp://ftp.icpdas.com/pub/cd/8000cd/napdos/minios7/utility/minios7_utility/

Please download version v3.2.4 or later.

2. Step 2: Follow the prompts to complete the installation



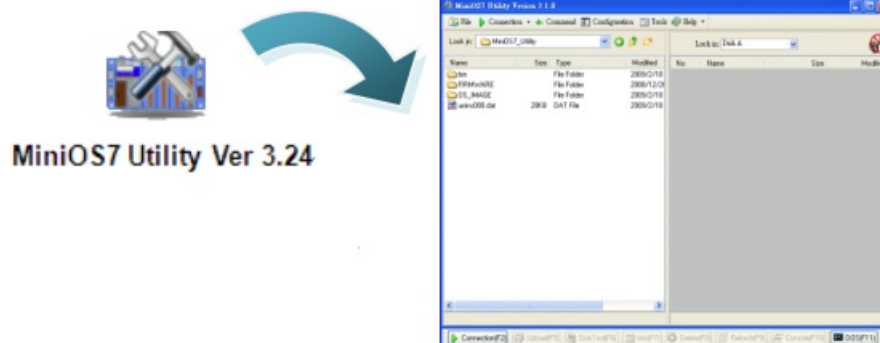
MiniOS7 Utility Ver 3.24

Using MiniOS7 Utility to Assign a New IP

The WISE-580x is an Ethernet device, which comes with a default IP address, therefore, you must first assign a new IP address to the WISE-580x. The factory default IP settings are as follows:

Item	Default
IP Address	192.168.255.1
Subnet Mask	255.255.0.0
Gateway	192.168.0.1

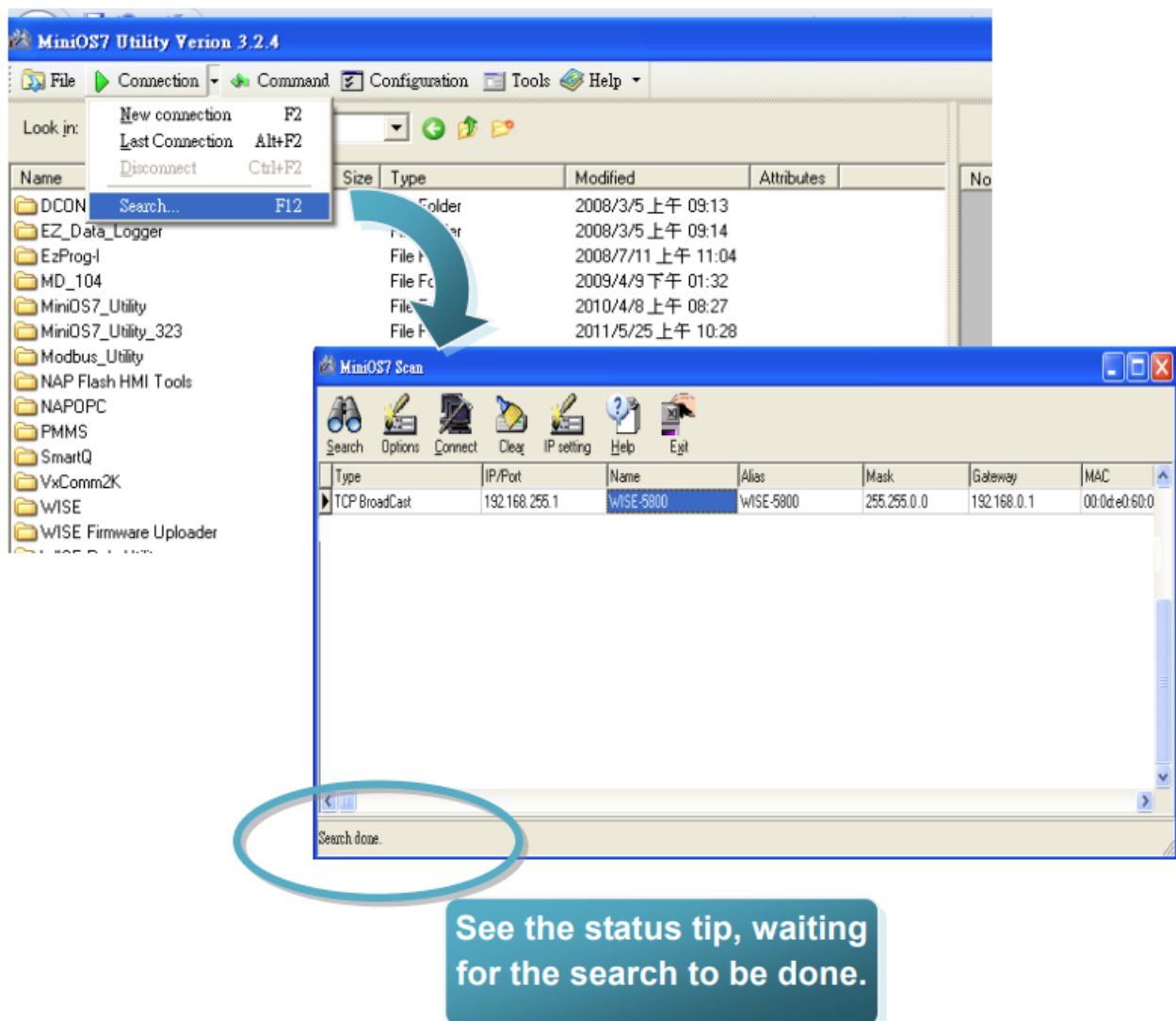
1. Step 1: Run the MiniOS7 Utility



Double-click the MiniOS7 Utility shortcut on your desktop.

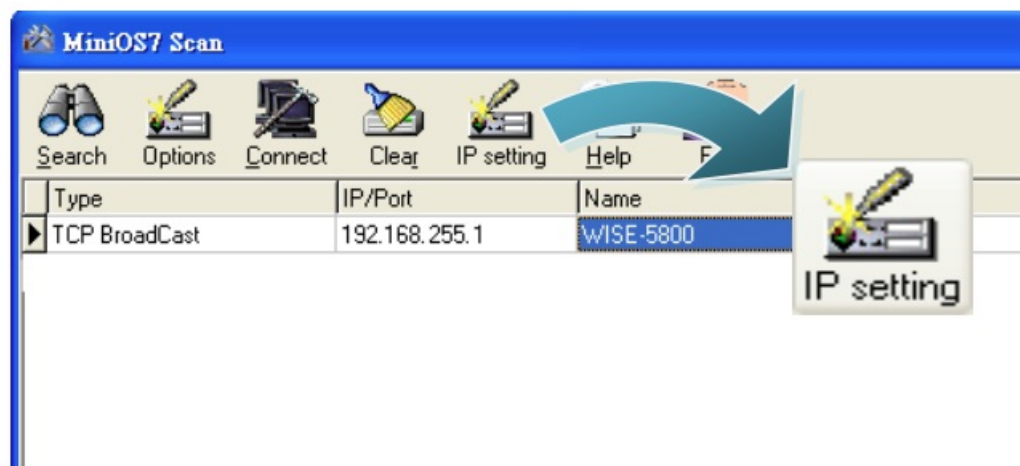
2. Step 2: Press “F12” or choose “Search” from the “Connection” menu

After pressing F12 or choosing “Search” from “Connection” menu, the MiniOS7 Scan dialog will appear, that will display a list of all the MiniOS7 modules on your network.



3. Step 3: Choose the module name and then choose "IP setting" from the toolbar

Choose the module name for fields in the list, and then choose IP setting from the toolbar.

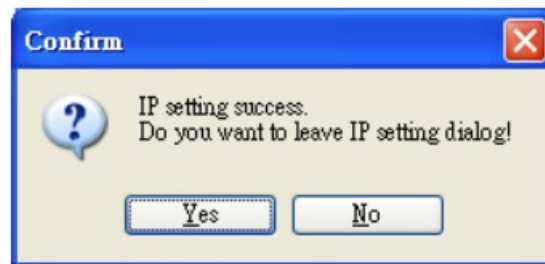


4. Step 4: Assign a new IP address and then choose "Set" button



5. Step 5: Choose “Yes” button & Reboot WISE-580x

After completing the settings, press the Yes button in the Confirm dialog box to exit the procedure, then reboot WISE-580x.



Go to WISE-580x Web Site to edit Control Logic

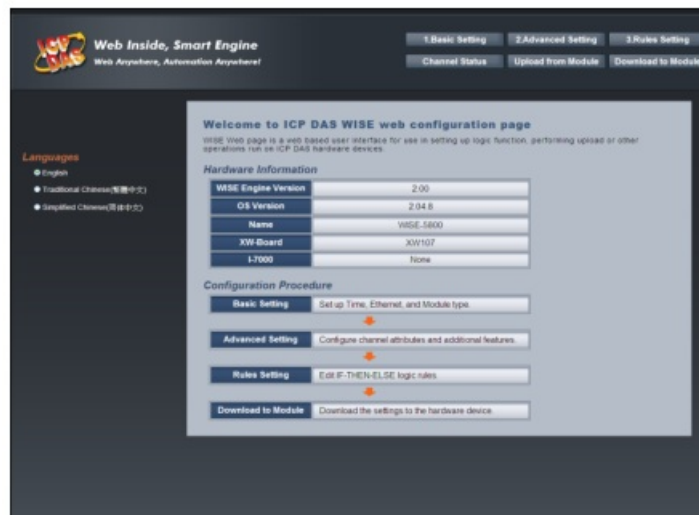
Please follow the steps below to implement IF-THEN-ELSE control logic on controllers:

1. Step 1: Open a browser, and type in the URL address of the WISE-580x

Open a browser (recommended using Internet Explorer, new version is better). Type in the URL address of the WISE-580x module in the address bar. Make sure the IP address is accurate.

2. Step2: Get on the WISE-580x web site


Get on the WISE-580x web site. Login with the default password “wise”. Implement the control logic configuration in the order (Basic Setting->Advanced Setting->Rule Setting->Download to Module), then complete the IF-THEN-ELSE rule editing.



Copyright © 2011 ICP DAS Co., Ltd. All Rights Reserved.

E-mail: service@icpdas.com

Documents / Resources



Quick Start Guide for WISE-580x Series

What's in the Box?

Technical Support

ICP DAS Taiwan
ICP DAS USA
ICP DAS Europe
ICP DAS India

[Logicbus WISE-580x Series WISE IO Module Intelligent Data Logger PAC Controller](#) [pdf] User Guide

WISE-580x Series, WISE IO Module Intelligent Data Logger PAC Controller, WISE-580x Series WISE IO Module Intelligent Data Logger PAC Controller, Intelligent Data Logger PAC Controller, Data Logger PAC Controller, Logger PAC Controller, Controller

References

- [ftp.icpdas.com - /pub/cd/8000cd/napdos/minios7/utility/minios7_utility/](ftp://icpdas.com/pub/cd/8000cd/napdos/minios7/utility/minios7_utility/)
- wise.icpdas.com/index.html
- [ICP DAS](http://icpdas.com)