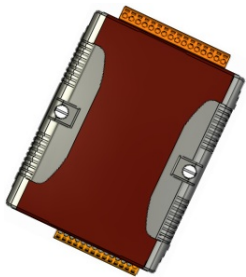




Logicbus WISE-580x Intelligent Data Logger PAC Controller User Guide

[Home](#) » [Logicbus](#) » **Logicbus WISE-580x Intelligent Data Logger PAC Controller User Guide** 



Contents

- 1 Quick Start Guide for WISE-580x Series
 - 1.1 Welcome!
 - 1.2 What's In the Box?
 - 1.3 Technical Support
 - 1.4 2 Connecting to PC, Network and Power
 - 1.5 3 Installing the MiniOS7 Utility
 - 1.6 4 Using MiniOS7 Utility to Assign a New IP
- 2 Documents / Resources
 - 2.1 References
- 3 Related Posts

Quick Start Guide for WISE-580x Series

May 2012, Version 1.2

Welcome!

Thank you for purchasing WISE-580x - the Intelligent Data Logger PAC controller for remote monitoring and control application. This Quick Start Guide will provide you with minimum information to get started with WISE-580x. It is intended for use only as a quick reference. For more detailed information and procedures, please refer

to the full user manual on the CD included in this package.

What's In the Box?

In addition to this guide, the package includes the following items:



WISE-580x Series Module



Software Utility CD



2G microSD card



RS-232 cable (CA-0910)



Screw Driver (1C016)



GSM Antenna (ANT-421-02) Only for WISE-5801

Technical Support

- **WISE-580x User Manual**

CD:\WISE-580x\document\User Manual\

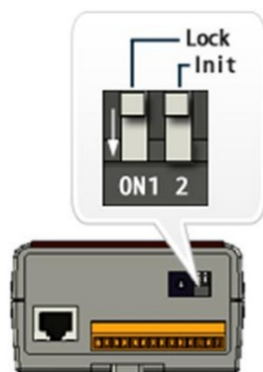
http://ftp.icpdas.com/pub/cd/wise_cd/wise-580x/document/user manual/

- **WISE Website**

<http://wise.icpdas.com/index.html>

- **ICP DAS Website**

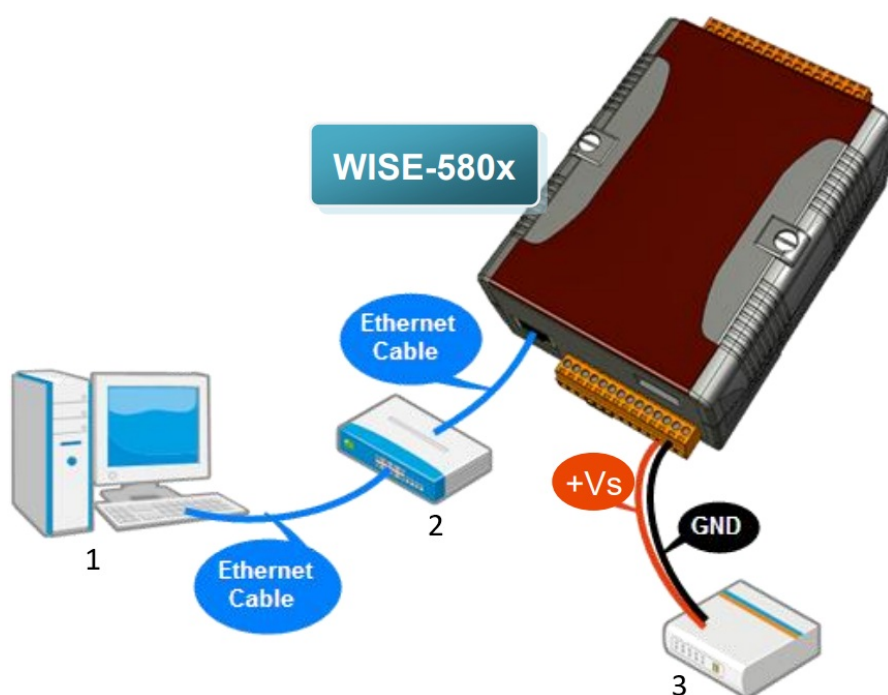
<http://www.icpdas.com/>



Make sure the “Lock” switch placed in the “OFF” position, and the “Init” switch placed in the “ON” position.

2 Connecting to PC, Network and Power

The WISE-580x is equipped with an RJ-45 Ethernet port for connection to an Ethernet hub/switch and PC. You can also link directly the WISE-580x to PC with an Ethernet cable.



1. Host PC
2. Hub/Switch
3. + 12 – 48 VDC Power Supply

3 Installing the MiniOS7 Utility

Step 1: Get the MiniOS7 Utility



The MiniOS7 Utility can be obtained from companion CD or our FTP site:
CD:\Tools\MiniOS7 Utility\

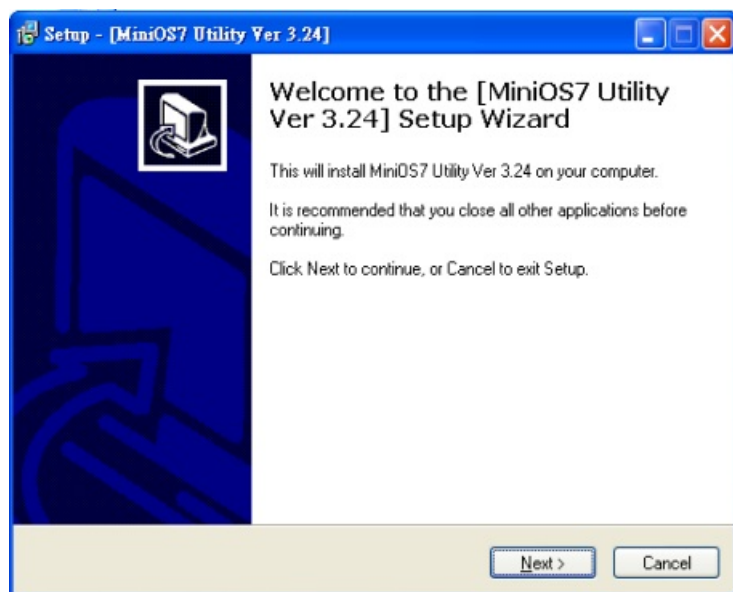
ftp://ftp.icpdas.com/pub/cd/8000cd/napdos/minios7/utility/minios7_utility/

Please download version v3.2.4 or later.

Step 2: Follow the prompts to complete the installation



MiniOS7 Utility Ver 3.24



After the installation has been completed, there will be a new short-cut for MiniOS7 Utility on the desktop.

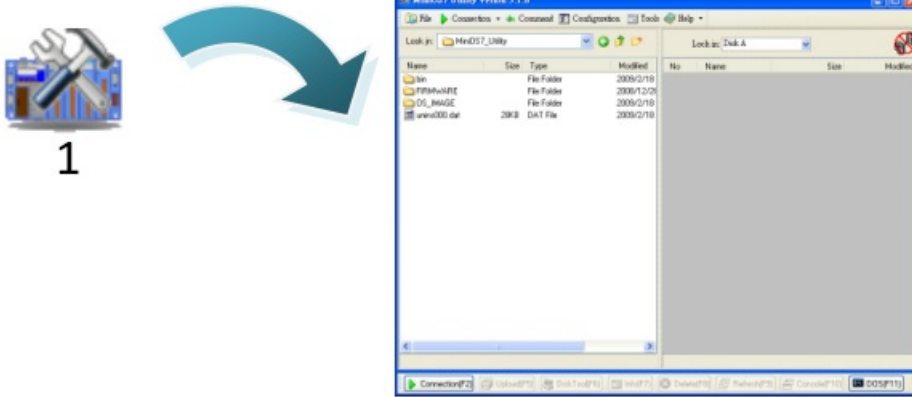
4 Using MiniOS7 Utility to Assign a New IP

The WISE-580x is an Ethernet device, which comes with a default IP address, therefore, you must first assign a new IP address to the WISE-580x.

The factory default IP settings are as follows:

Item	Default
IP Address	192.168.255.1
Subnet Mask	255.255.0.0
Gateway	192.168.0.1

Step 1: Run the MiniOS7 Utility

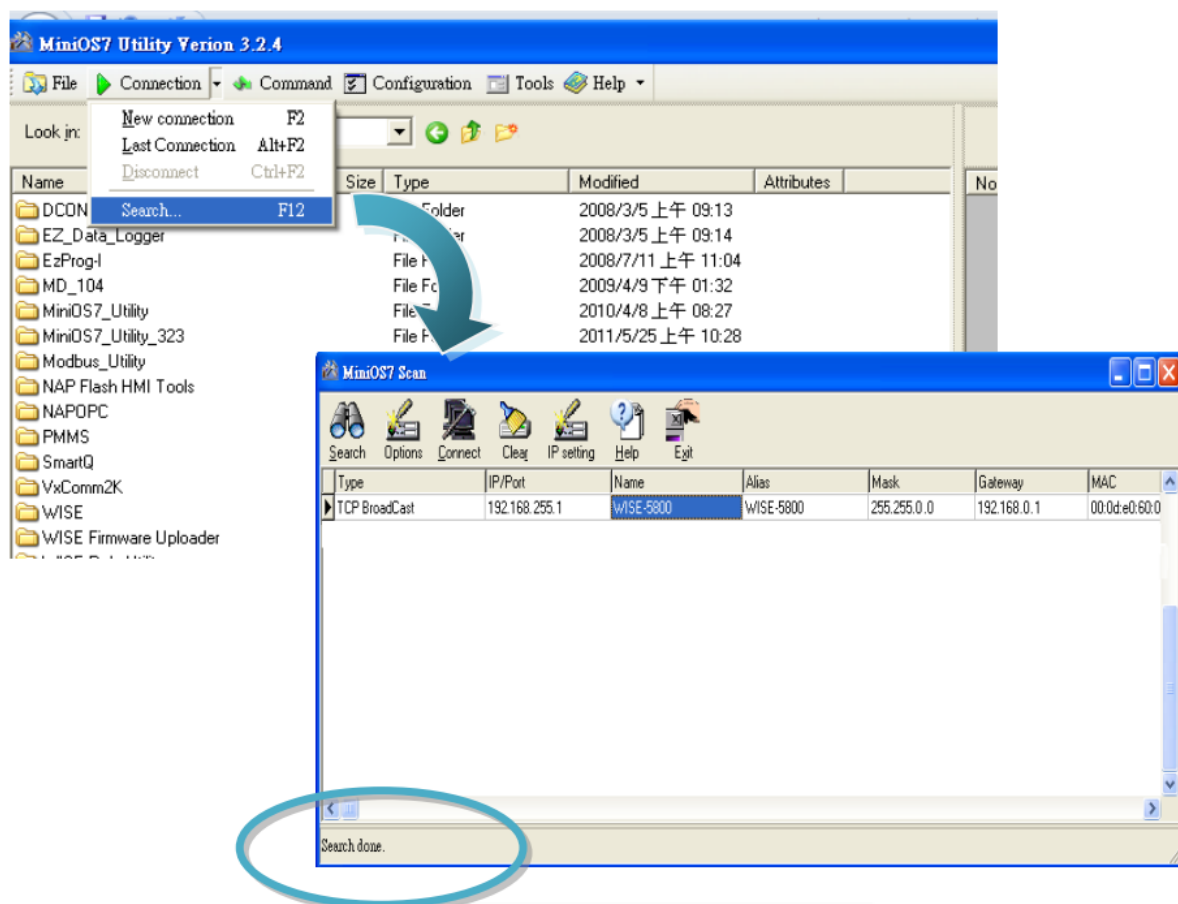


1. MiniOS7 Utility Ver 3.24

Double-click the MiniOS7 Utility shortcut on your desktop.

Step 2: Press “F12” or choose “Search” from the “Connection” menu

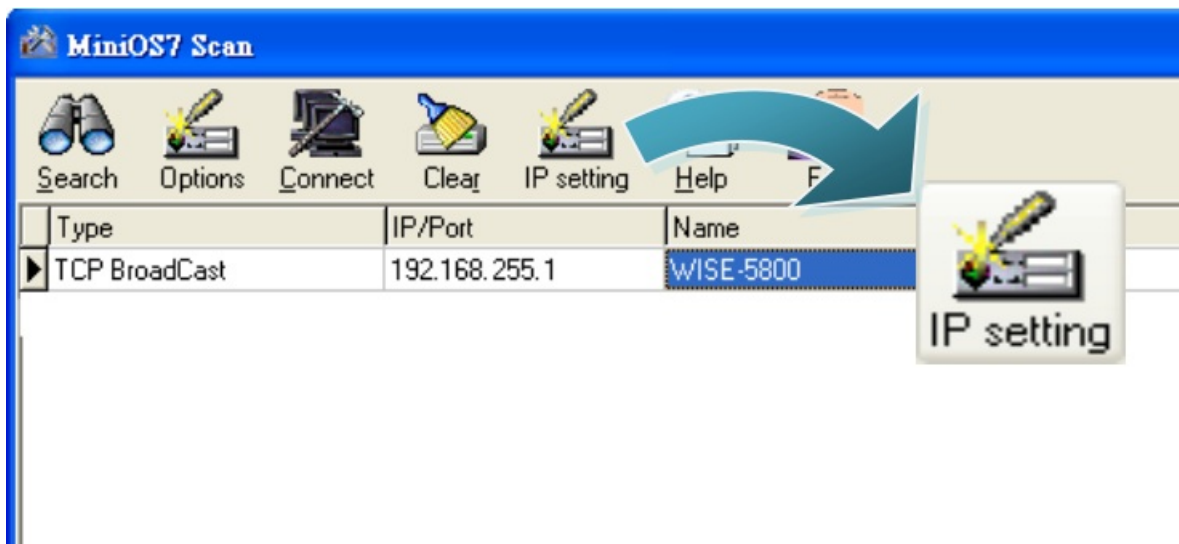
After pressing F12 or choosing “Search” from “Connection” menu, the MiniOS7 Scan dialog will appear, that will display a list of all the MiniOS7 modules on your network.



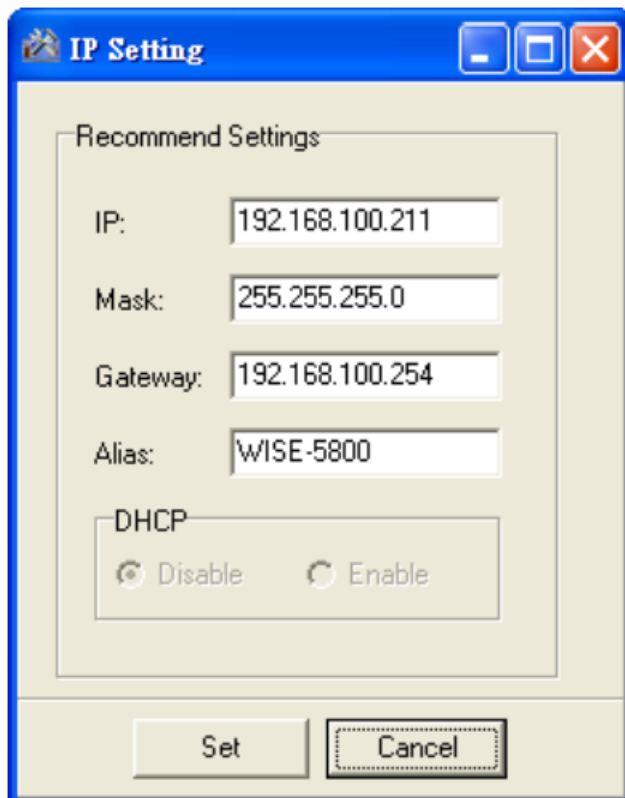
See the status tip, waiting for the search to be done.

Step 3: Choose the module name and then choose “IP setting” from the toolbar

Choose the module name for fields in the list, and then choose IP setting from the toolbar.

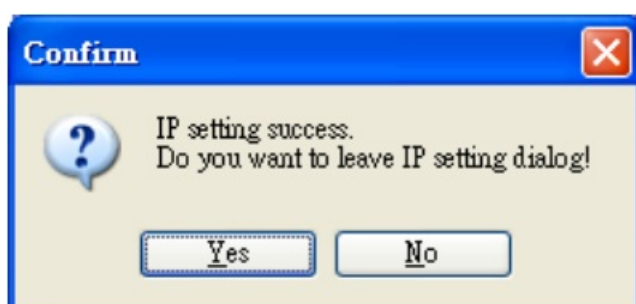


Step 4: Assign a new IP address and then choose “Set” button



Step 5: Choose “Yes” button & Reboot WISE-580x

After completing the settings, press the Yes button in the Confirm dialog box to exit the procedure, then reboot WISE-580x..



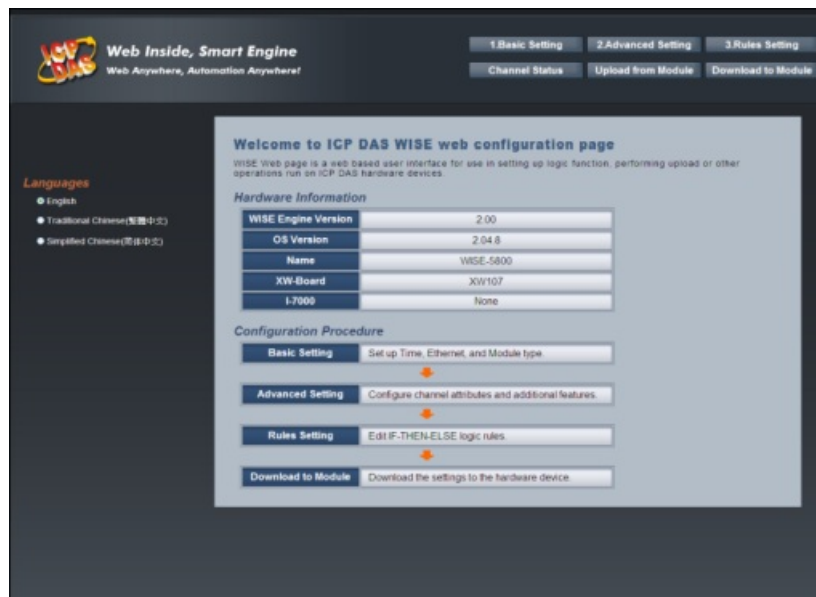
Please follow the steps below to implement IF-THEN-ELSE control logic on controllers:

Step 1: Open a browser, and type in the URL address of the WISE-580x

Open a browser (recommended using Internet Explorer, new version is better). Type in the URL address of the WISE-580x module in the address bar. Make sure the IP address is accurate.

Step2: Get on the WISE-580x web site


Get on the WISE-580x web site. Login with the default password “**wise**”. Implement the control logic configuration in the order (Basic Setting → Advanced Setting → Rule Setting → Download to Module), then complete the IF-THEN-ELSE rule editing.



Step 3: For more detail information, please refer to WISE User Manual



Documents / Resources

	<p>Logicbus WISE-580x Intelligent Data Logger PAC Controller [pdf] User Guide WISE-580x, Intelligent Data Logger PAC Controller, Data Logger PAC Controller, PAC Controller , Intelligent Data Logger, Controller, WISE-580x</p>
---	--

References

- <ftp.icpdas.com> - /pub/cd/8000cd/napdos/minios7/utility/minios7_utility/
- wise.icpdas.com/index.html
- [ICP DAS](#)

