



LOGIC LMF570k Quad Snacker Sheep Multi Feeder Instruction Manual

July 1,
2025

BRAEMER MODELS

Contents [[hide](#)]

1 GREAT BRITISH MODEL KITS

1.1 1:32 Logic Weed Licker Model Kit

1.2 Instruction Manual

2 Documents / Resources

2.1 References

GREAT BRITISH MODEL KITS

1:32 Logic Weed Licker Model Kit



Instruction Manual

GREAT BRITISH KITS

CLEAN ALL RESIN PARTS IN WARM SOAPY WATER

The silicone release agent used in the casting process will react with paint, it must be thoroughly cleaned off before painting.

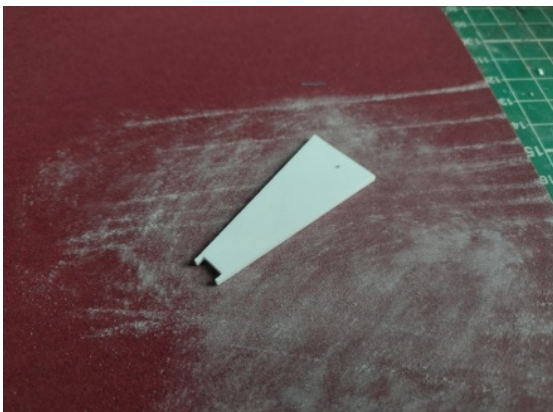
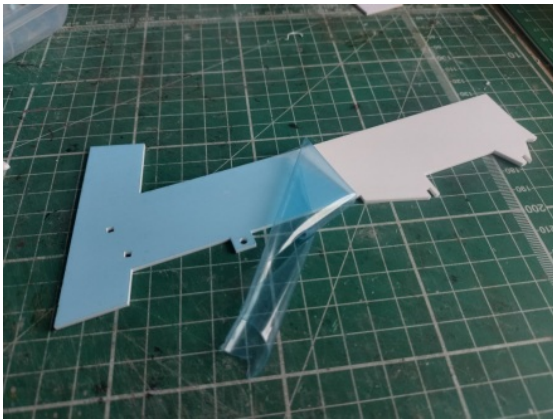
This is a guide to using the kit. Care should be taken at each stage to make sure the model is going together correctly and any alterations that are not in the instructions should be carried out.

Glue: Recommended glue is a good quality super glue such as Gorilla Super Glue. I use the Blue Lid Gorilla Super Glue which is readily available from most hardware stores including B&Q and Screwfix. It provides a strong bond, the acrylic around the bond will snap before the bond breaks.

Paint: The instructions will suggest the best point to paint components. A good quality automotive primer or plastic primer followed by automotive acrylic is recommended. Brands such as Hycote or Halfords are likely to be problem free and provide a good finish to your model while being readily available.



Read all the instructions before building to avoid any unexpected surprises



Step 1: To start with I recommend cleaning the resin parts (wheels and tyres) in a strong washing up liquid solution. Remove any flash from the resin parts too, this is excess resin left over from the casting process where resin is poured into the mould.

Then remove the plastic backing from all acrylic parts and use a knife to cut the small tabs holding each part to the sprue, DO NOT push the parts out, always cut them. Sand back the surface with a fine grit sand paper 220 grit or less. The laser cutting process causes a slight raised edge on most parts that will inhibit strong adhesion. By sanding these edges off a stronger glued bond can be made and the surface of the plastic is improved for paint adhesion. Sharp edges can give a thin paint application that shows as white edges in the final paint.

It is important to take care when sanding as Acrylic is a brittle material and can easily snap. If something does break simply line up the crack lines and glue back together, leave 24hrs before using the part again so the glue can set firmly. Same applies to resin parts.



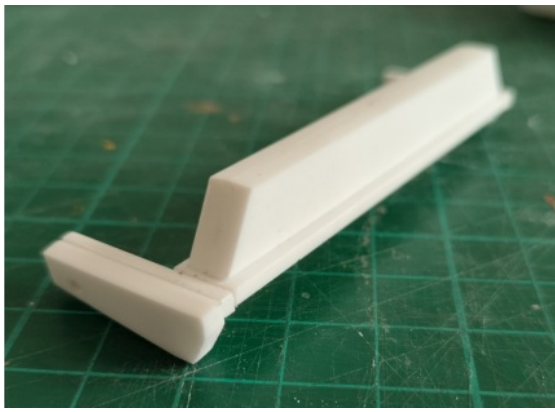
Glue the two part 2's back to back as shown



Glue the assembly onto part 1, use the engraved lines to align the part 2's.

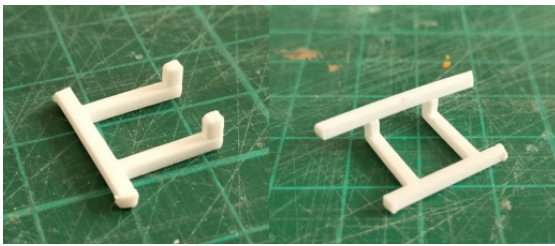


Glue a 3 to each end of the assembly. Glue the flat face of 3 to the edge of 1. Ensure the smaller of the two circles is around the assembly, the larger circle should overhang to the rear.

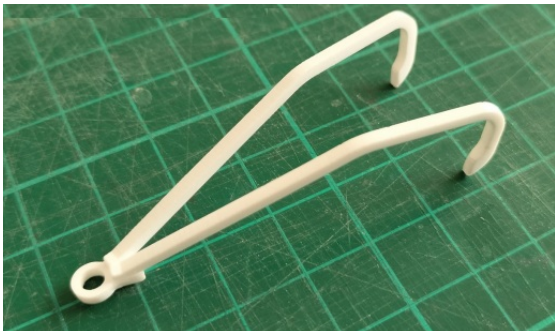


Glue part 12 to the offside part 3 as illustrated.

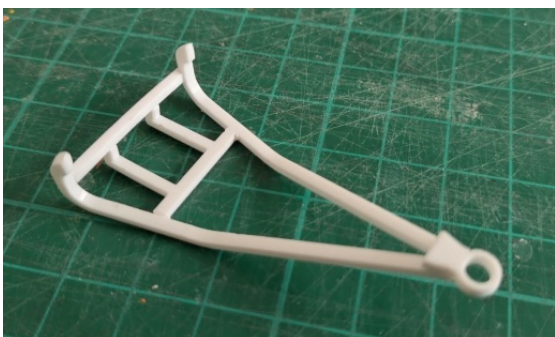
Ensure the holes line up.



Glue the two small squares part 8 to the ends of part 6. Glue part 7 onto the top of the small squares as pictured. The taper on the ends of 7 should point towards the assembly following the taper on part 6.



Glue the two part 5's to the tow eye part 9. Use the angles of part 9 to glue part 5's at the right angle.



Glue the two assemblies together as illustrated.

The model can now be painted. We have used spray paints to apply a red plastic primer to the parts being painted red and black. A grey primer was used on the wheels. For red we used Halfords S4-140 Red and Halfords Gloss Black for the black frame. The wheels were brush painted with Tamiya XF-16 flat aluminium, and the tank lid brush painted

using decanted red spray paint.



The decals are cut out of the sheet using scissors, peel the paper backing sheet off and apply to the model.



Glue the tank onto the black frame and the black frame centrally to the red assembly as illustrated.



Pluck the hair of the last 2mm of the pipe cleaner to leave bare wire sticking out. Thread this wire into the two holes on part 3 under the assembly.



To fit the wheels cut two lengths of green wire, and bend the ends over to make an L shape, thread the wire through the front of the tyre, then pop a dab of glue on the end of the wire and then insert into the hole in part 3, allow the glue to set before letting go. Repeat for the other side, this should hold the wheels in place while allowing them to spin.



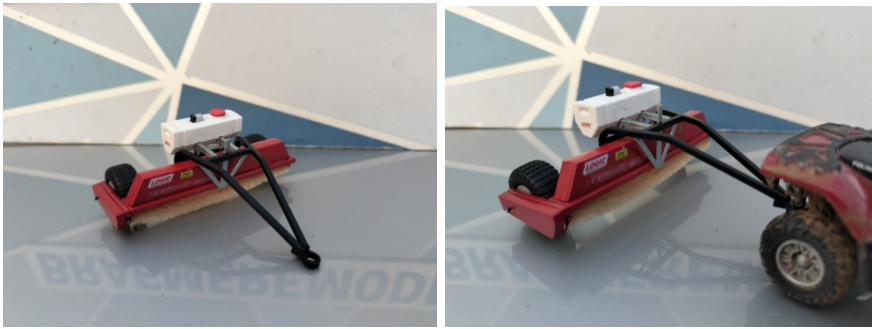
Sit back and enjoy! This completes the build. A selection of reference photos are included below.

Enjoyed this build?

Find more kits on our website


www.braameremodels.co.uk





BRAEMERMODELSBRAEMERMODELSBRAEMERMODELSBRAEMERMODELSBRAEMERMODELS

Documents / Resources

	<p>LOGIC LMF570k Quad Snacker Sheep Multi Feeder [pdf] Instruction Manual</p> <p>1 32 Logic Quad Snacker Sheep Multi Feeder Model Kit, 1 32 Logic Weed Licker Model Kit, LMF570k Quad Snacker Sheep Multi Feeder, LMF570k, Quad Snacker Sheep Multi Feeder, Sheep Multi Feeder, Multi Feeder</p>
---	--

References

- [User Manual](#)

Logic

1 32 Logic Quad Snacker Sheep Multi Feeder Model Kit, 1 32 Logic Weed Licker Model Kit, LMF570k, LMF570k Quad Snacker Sheep Multi Feeder, Logic, Multi Feeder, Quad Snacker Sheep Multi Feeder, Sheep Multi Feeder

Leave a comment

Your email address will not be published. Required fields are marked *

Comment *

Name

Email

Website

☐ Save my name, email, and website in this browser for the next time I comment.

Post Comment

Search:

e.g. whirlpool wrf535swhz

Search

[Manuals+](#) | [Upload](#) | [Deep Search](#) | [Privacy Policy](#) | [@manuals.plus](#) | [YouTube](#)

This website is an independent publication and is neither affiliated with nor endorsed by any of the trademark owners. The "Bluetooth®" word mark and logos are registered trademarks owned by Bluetooth SIG, Inc. The "Wi-Fi®" word mark and logos are registered trademarks owned by the Wi-Fi Alliance. Any use of these marks on this website does not imply any affiliation with or endorsement.