



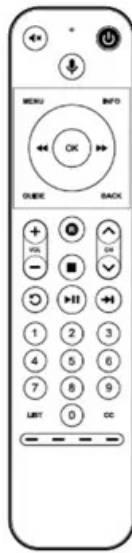
[Home](#) » [LOGAN](#) » **Logan R329451A00 Remote Control User Manual** 

Contents [[hide](#)]

- [1 Logan R329451A00 Remote Control](#)
- [2 Product Information](#)
- [3 Key Chart](#)
- [4 Bluetooth Pairing mode](#)
- [5 Volume Lock](#)
- [6 TV Brand Setup](#)
- [7 Audio Device Brand Setup](#)
- [8 Set Top Box Setup](#)
- [9 Direct Code Entry For TV's](#)
- [10 Getting Started](#)
- [11 Frequently Asked Questions](#)
- [12 Documents / Resources](#)
 - [12.1 References](#)

Logan

Logan R329451A00 Remote Control



Product Information

Specifications

- Model: MUG29451AF-A01
- Bluetooth Pairing: Manual mode
- Key Functions: MENU, GUIDE, TRANSPORT, BACK, Play/Pause, OK, MUTE, Volume Up, Mute, Power

Key Chart



MENU:
Takes you to your content menu screen.
Vous amène à l'écran de votre menu de contenu.

GUIDE:
Displays program guide.
Affiche le guide des programmes.

VOLUME:
Controls and mutes TV volume.
Contrôle et coupe le volume du téléviseur.

TRANSPORT:
Controls DVR programming.
Contrôle la programmation du DVR

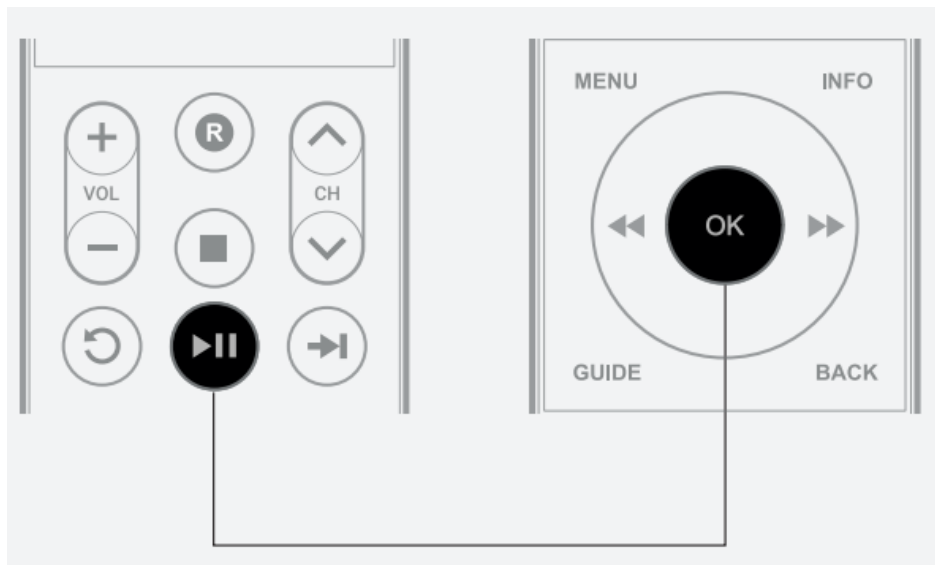
STB:
Powers ON and OFF your set top box.
Allume et éteint votre décodeur.

VOICE:
Activates voice search functionality using microphone at top of remote.
VOIX : Active la fonctionnalité de recherche vocale à l'aide du microphone en haut de la télécommande.

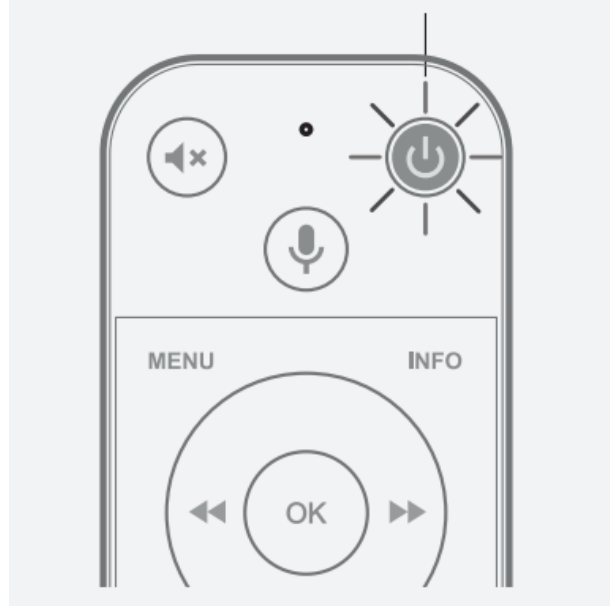
BACK:
Exits current menu and returns to current program.
RETOUR: Quitte le menu actuel et revient au programme actuel.

Bluetooth Pairing mode

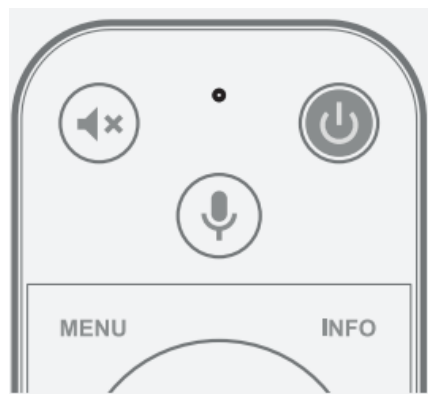
1. Press and hold Play/Pause + OK until Feedback LED starts blinking.



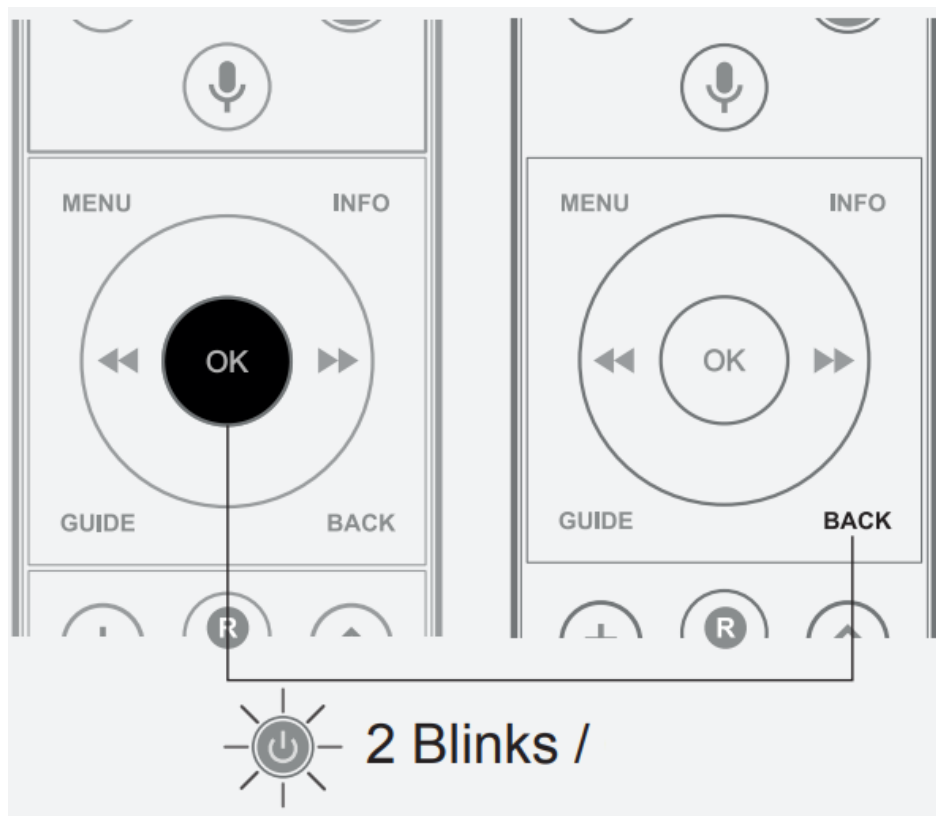
Blinking LED /



2. Feedback LED will stop blinking to confirm pairing.



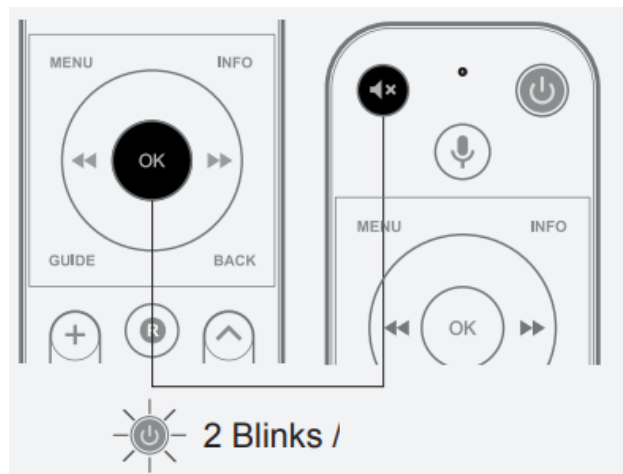
3. If Pairing is unsuccessful, hold OK + BACK for 3 seconds to clear any previous pairing information and feedback LED blinks twice.



- Repeat Steps 1 and 2.

Volume Lock

1. Press and hold OK/SELECT and MUTE until the feedback LED blinks twice.



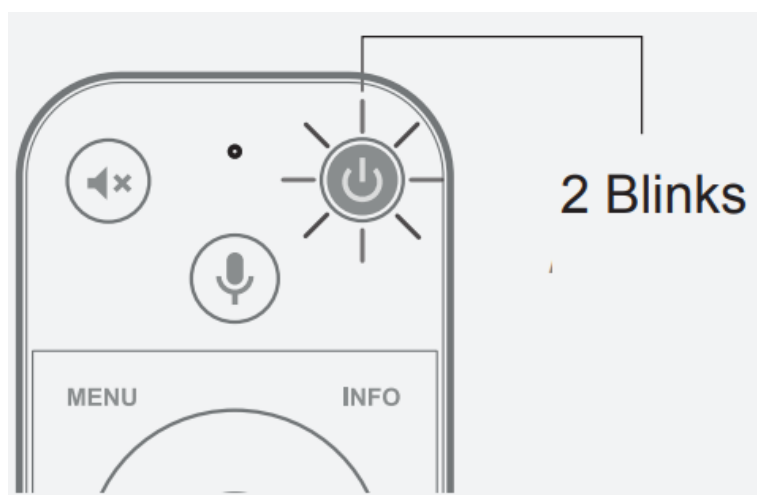
2. Press Volume Up key.



3. Enter Corresponding Device Digit to lock Volume to.

Device	Digit
STB	0
TV	1
Audio	2

4. The feedback LED will blink twice.

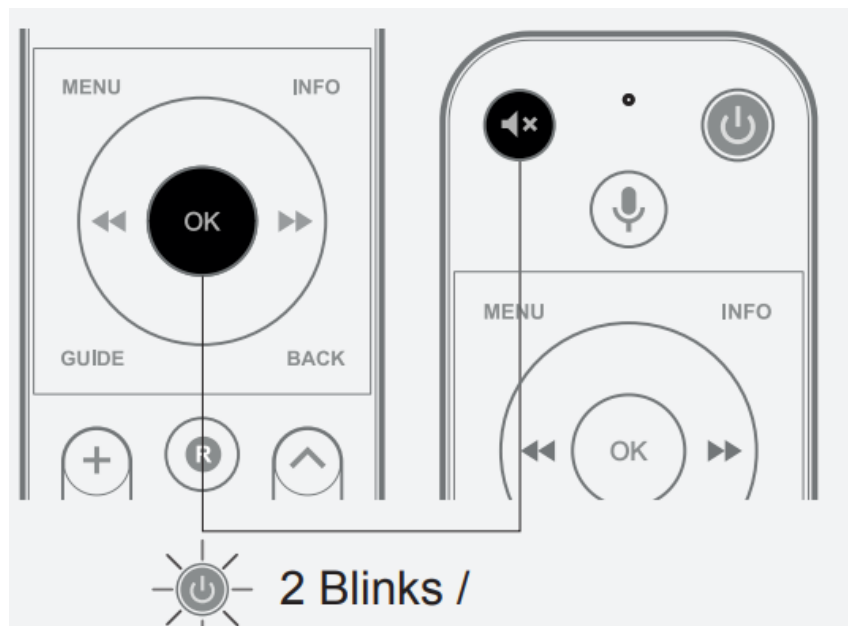


5. Complete



To Unlock Volume

1. Press and hold OK/SELECT and MUTE until the feedback LED blinks twice.



2. Press the Mute key.



3. The feedback LED will display four blinks to indicate that the volume has now been unlocked.



4. Complete

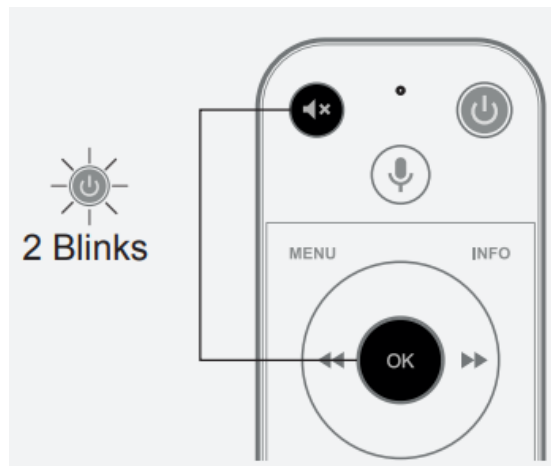


TV Brand Setup

1. Turn on the TV that you wish to setup
2. Find your device brand in the Brand Set / Simple Set table below. Note the number that corresponds to your device brand.

TV Brand /	Digit e
Hisense, Sharp	1
LG	2
Panasonic	3
Philips, Magnavox	4
Samsung	5
Sanyo, RCA	6
Sony, Westinghouse	7
TCL, Roku, Onn	8
Toshiba, Amazon, Element	9
VIZIO, Insignia	0

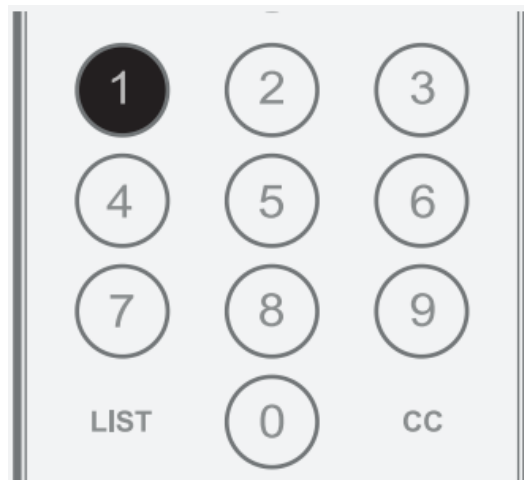
3. Press and hold OK/SELECT and MUTE until the feedback LED blinks twice.



4. Press the OK/SELECT key once feedback LED blinks once.

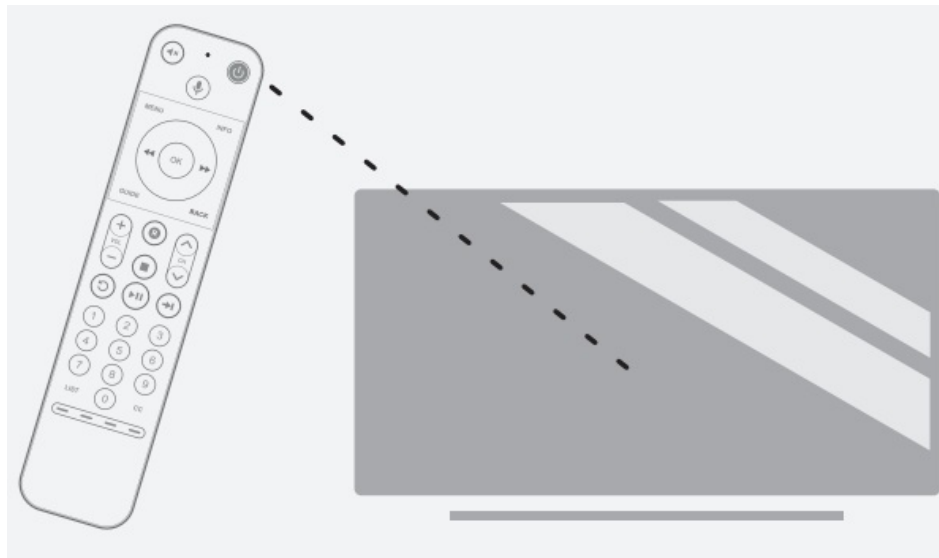


5. Press digit key 1.

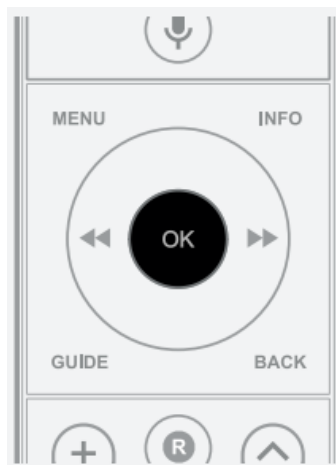


6. While pointing the remote at the TV, press and hold the number key for your brand that you noted in step 2.

- Release the key as soon as the device turns OFF.
- LED will go OFF and will blink (ON-OFF) during every code transmitted.



7. Press the Power key on the remote control to turn your device back ON.
 - If this does not work for your device, proceed to Direct Code Entry steps.



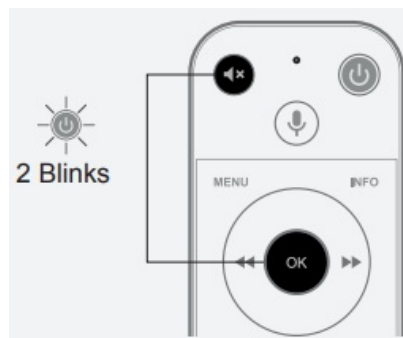
Audio Device Brand Setup

1. Turn on the device that you wish to setup.
2. Find your device brand in the Brand Set / Simple Set table below. Note the number that corresponds to your device brand.

Audio Brand /	Digit /
Bose	1
Denon	2
JBL, Polk Audio	3
LG,	4
On	5

Philips, Marantz	6
Pioneer, Insignia	7
Samsung, VIZIO	8
Sony	9
Yamaha	0

3. Press and hold OK/SELECT and MUTE until the feedback LED blinks twice.



4. Press the OK/SELECT key once feedback LED blinks once.



5. Press digit key 2.

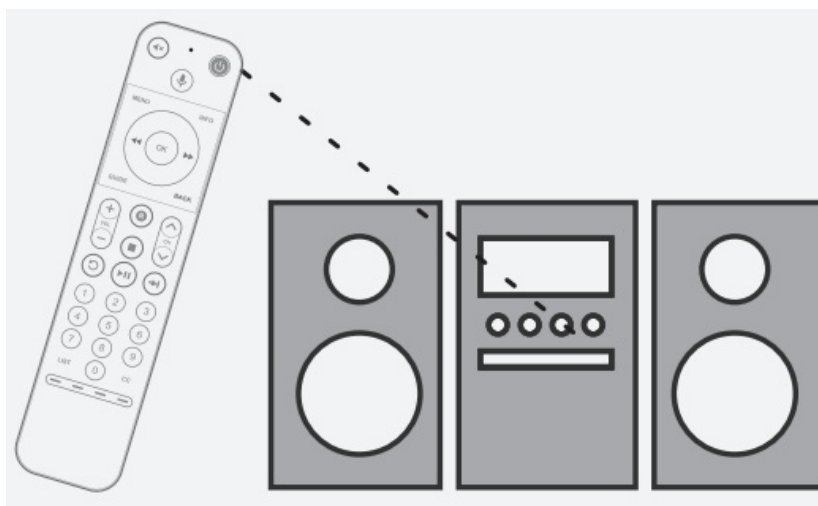


6. While pointing the remote at the audio device, press and hold the number key for your brand that you noted in step 2.

Release the key as soon as the device turns OFF.

LED will go OFF and will blink (ON-OFF) during every code transmitted.

- 7.



Press the Power key on the remote control to turn your device back ON.

- If this does not work for your device, proceed to Direct Code Entry steps.



Set Top Box Setup

1. Turn ON the TV and STB.
2. Find your STB brand in the QuickSwap table below.
3. Press and hold the OK + Action Key that corresponds to your device brand until the LED blinks once confirming the selection.

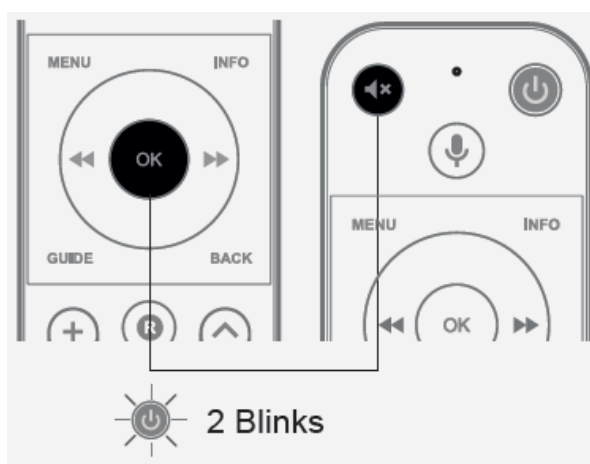
Press the CH^ button to see if STB changes. If it does, setup is complete.

ACTION KEY	MANUFACTURER FABRICANT
1	Motor

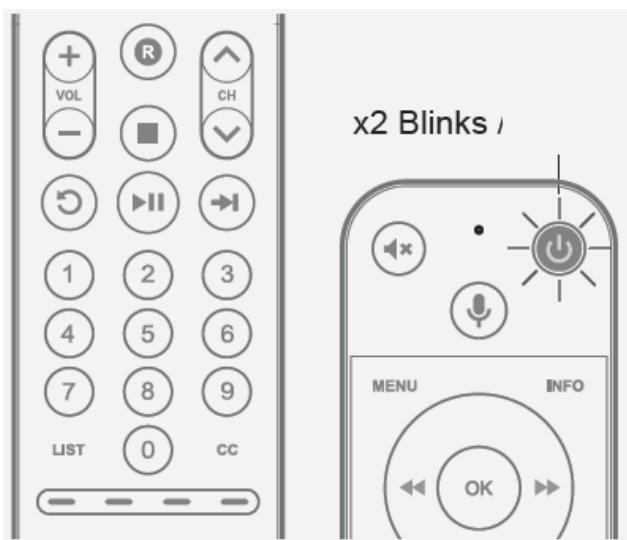
2	Entone
3	Amino
4	ADB

Direct Code Entry For TV's

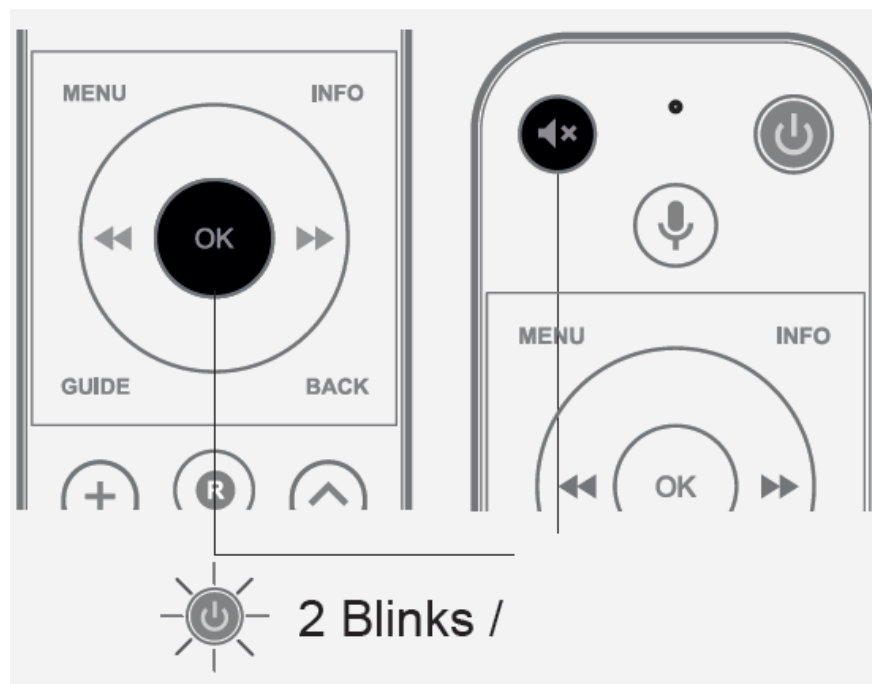
1. Turn ON the TV.
2. Refer to Code List for the brand setup code for the device you would like to control (SEE REVERSE SIDE OF THIS MANUAL).
3. Press and hold OK/SELECT and MUTE until the feedback LED blinks twice.



4. Enter the 5 digit device code. The feedback LED will blink twice to indicate successful programming.



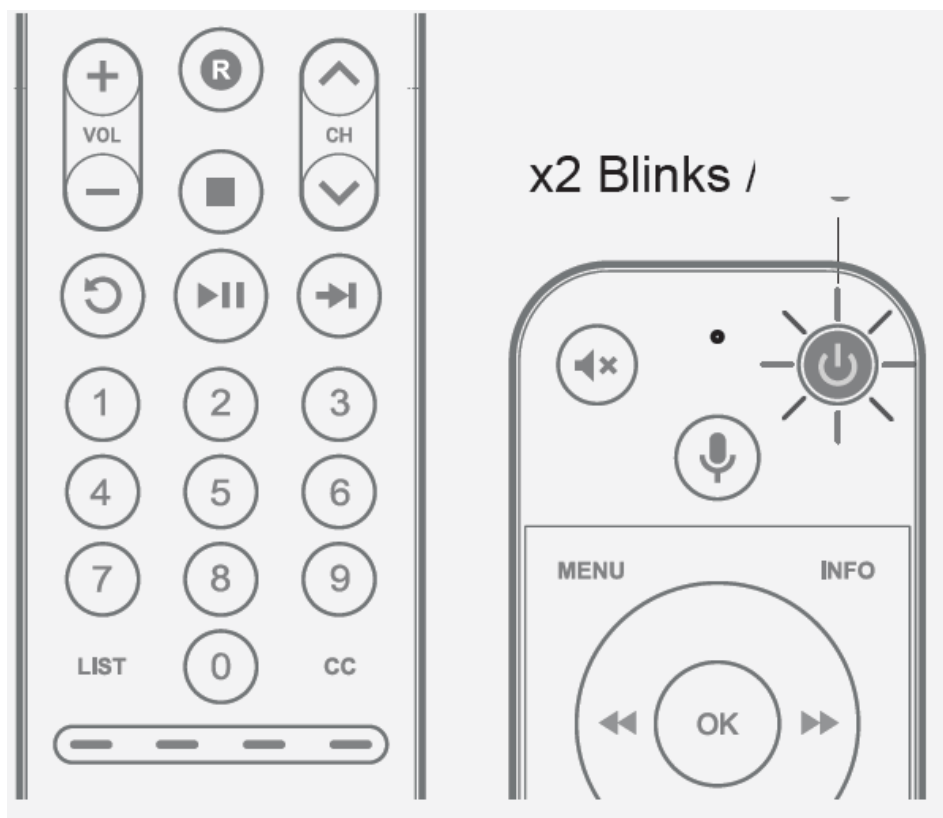
5. Press the Power key on the remote control.



6. If your TV turns off, process is complete. If TV does not turn off, repeat steps 2-7 using the next code in the Chart.

Direct Code Entry for Audio Devices

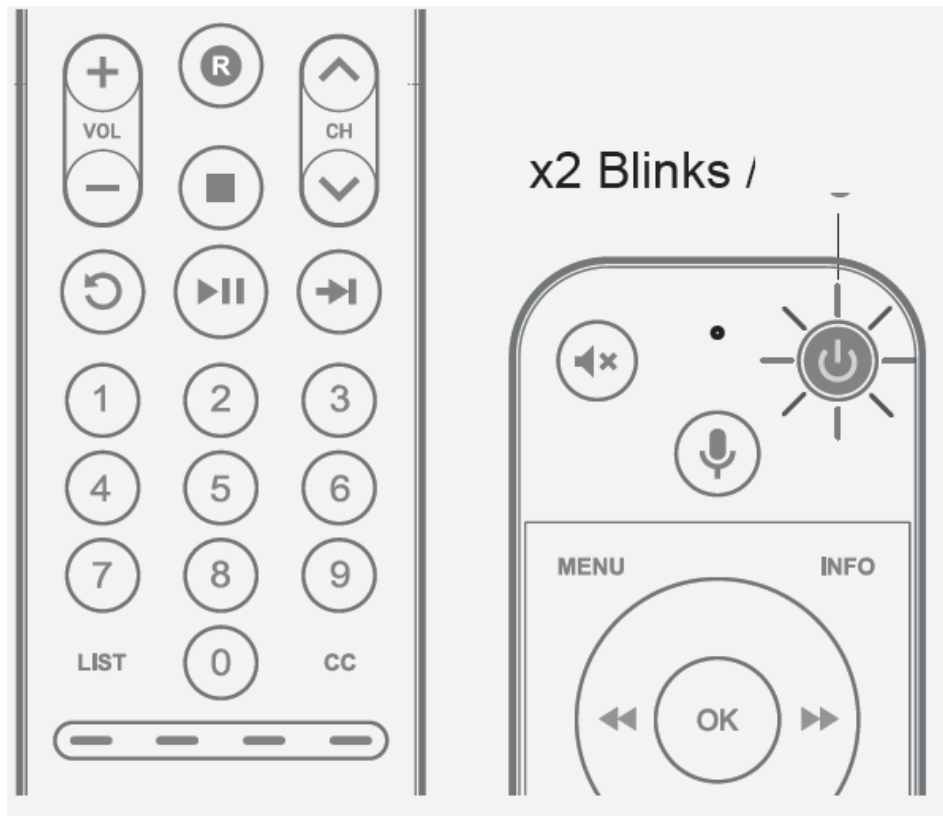
1. Turn ON the Audio Device.
2. Refer to Code List for the brand setup code for the device you would like to control (SEE REVERSE SIDE OF THIS MANUAL).
3. Press and hold OK/SELECT and MUTE until the feedback LED blinks twice.



4. Press digit key 2.



5. Enter the 4 digit device code. The feedback LED will blink twice to indicate successful programming.



6. Press the Power key on the remote control.



7. If your Audio Device turns off, process is complete. If device does not turn off, repeat steps 2-7 using the next code in the Chart.

Getting Started

FCC Statement

This device complies with part 15 of the FCC Rules. Operation is subject to the following two conditions:

1. This device may not cause harmful interference, and
2. This device must accept any interference received, including interference that may cause undesired operation.

This equipment has been tested and found to comply with the limits for a Class B digital device, pursuant to part 15 of the FCC Rules. These limits are designed to provide reasonable protection against harmful interference in a residential installation. This equipment generates, uses and can radiate radio frequency energy and if not used in accordance with the instructions, may cause harmful interference to radio communications. However, there is no guarantee that interference will not occur in a particular installation. If this equipment does cause harmful interference to radio or television reception, the user is encouraged or try to correct the interference by one or more of the following measures:

- Reorient or relocate the receiving antenna.
- Increase or decrease the separation between the equipment and receiver.
- Connect the equipment into an outlet on a circuit different from that to which the receiver is connected
- Consult the dealer or an experienced remote control/TV technician for help.

It is strongly recommended that the TV be plugged into a separate wall outlet. This equipment has been verified to comply with the limits for a Class B computing device, pursuant to FCC Rules. The user is cautioned that changes and modifications made to the equipment without the approval of manufacturer could void the user's authority to operate this equipment.

Industry Canada Statement

For Industry Canada Industry Canada Statement This device complies with RSS-210 of the Industry Canada Rules. Operation is subject to the following two conditions:

<https://urcsupport.com/urc-product/innovative-systems-logan/>



Frequently Asked Questions


What should I do if the LED does not stop blinking during Bluetooth pairing?

If pairing is unsuccessful, hold OK + BACK for 3 seconds to clear any previous pairing information and try again.

How do I unlock the volume if I have locked it to a specific device?

Press and hold OK/SELECT and MUTE until the feedback LED displays four blinks to indicate that the volume has been unlocked.

Documents / Resources

	<p>Logan R329451A00 Remote Control [pdf] User Manual</p> <p>15683, 14398, 13879, 14182, 11687, 13579, 14542, 13519, 12397, 12352 , 11840, R329451A00 Remote Control, R329451A00, Remote Control, Control, Remote</p>
---	--

	Logan R329451A00 Remote Control [pdf] User Manual 15683, 14398, 13879, 14182, 11687, 13579, 14542, 13519, 12397, 12352 , 11840, R329451A00 Remote Control, R329451A00, Remote Control, Control, Remote
---	---

References

- [User Manual](#)

LOGAN

11687, 11840, 12352, 12397, 13519, 13579, 13879, 14182, 14398, 14542, 15683, control, Logan, R329451A00, R329451A00 Remote Control, remote, Remote Control

Leave a comment

Your email address will not be published. Required fields are marked *

Comment *

Name

Email

Website

☐ Save my name, email, and website in this browser for the next time I comment.

[Post Comment](#)

Search:

[Search](#)

[Manuals+](#) | [Upload](#) | [Deep Search](#) | [Privacy Policy](#) | [@manuals.plus](#) | [YouTube](#)

This website is an independent publication and is neither affiliated with nor endorsed by any of the trademark owners. The "Bluetooth®" word mark and logos are registered trademarks owned by Bluetooth SIG, Inc. The "Wi-Fi®" word mark and logos are registered trademarks owned by the Wi-Fi Alliance. Any use of these marks on this website does not imply any affiliation with or endorsement.