



LOFTEK LK-B15 Smart LED Colorful Shape Lamp User Manual

[Home](#) » [LOFTEK](#) » LOFTEK LK-B15 Smart LED Colorful Shape Lamp User Manual 

LOFTEK LK-B15 Smart LED Colorful Shape Lamp User Manual



Contents

- 1 Smart LED Colorful
- 2 Safety Information
- 3 Safety Instructions
- 4 Introduction
- 5 What You Get
- 6 Specifications
- 7 Installing Your Device
- 8 Functions of 2.4G Remote Control
 - 8.1 Troubleshooting
 - 8.2 LOFTEK Warranty
- 9 Documents / Resources
- 10 Related Posts

Smart LED Colorful



Safety Information

NOTICE: Please Use 5V/2A Charging Device to Plug in.



LEGAL DECLARATION

LOFTEK is not responsible for any property damage or personal injury caused by any violation of this manual's safety requirements. Without prior written permission of LOFTEK, reproduction, transfer, distribution or storage of the contents in this document in any form is prohibited. LOFTEK operates a policy of ongoing development. Thus, LOFTEK reserves the right to make changes or improvements to any of the products described in this document without prior notice. The contents of this document are all provided "as is". Except as required by applicable law, no warranties of any kind, either express or implied, are made in relation to the accuracy of this document. For detailed information, please contact LOFTEK. This device may contain commodities and technology subject to export laws and regulations. Diversion contrary to law is prohibited.

*Please read all the safety information carefully before using your device to ensure its safe and proper operation.

Safety Instructions

- Before plugging in the shape light, ensure that the voltage of the power source is 5V/2A ,otherwise the device may be damaged due to excessive voltage.
- Do not use the shape light if the power cord or plug is frayed, damaged, or shows signs of wear. Contact LOFTEK customer support for assistance.
- The operating temperature should be within -10° to 40°C (14 to 104°F). Do not expose the shape light to extreme temperatures, such as direct sunlight or freezing conditions.
- Do not use the shape light in environments with high humidity or moisture, as it may result in electric shock or damage to the device.
- To prevent overheating, do not cover the shape light or obstruct the ventilation openings during operation.
- Power off when replacing and cleaning to avoid electric shock.
- When unplugging the shape light, grasp the plug firmly and pull it straight out from the power outlet. Do not yank or tug on the cord.
- If the shape light requires maintenance or repair, contact LOFTEK customer support. Do not attempt to repair it yourself.
- Avoid using the lamp near heat sources.
- Do not stare at the lamp directly for a long time.
- Sockets that are dirty may cause poor contact with the charger and your shape light may fail to charge properly.
- Do not use the shape light in areas where it may be exposed to corrosive substances or chemicals.
- Do not use the shape light with any accessories or attachments not recommended by LOFTEK.
- Do not disassemble or modify the shape light and chargers, as this maylead to personal injury, electric shock or fire.
- Do not touch the charger, cable or power socket with wet hands, as this maycause electric shock.
- When unplugging the shape light, grasp the plug firmly and pull it straight out from the power outlet. Do not yank or tug on the cord.
- If the shape light is not functioning properly, discontinue use and contact LOFTEK customer support for troubleshooting assistance.

Introduction

Thanks for choosing LOFTEK Smart Shape Lights with Color Changing! LOFTEK LED colorful mood lighting are versatile and innovative smart lamps that offer an array of impressive features. These lamps are designed with convenience and customization in mind, allowing users to control them effortlessly using a remote control or a dedicated mobile app. It is a remarkable addition to any living space. With their intuitive control options, versatile color options, dynamic music sync feature, and various lighting modes, these smart lamps provide a customizable and immersive lighting experience for all occasions.

What You Get

- Smart LED Shape Light 1
- 2.4G Remote 1
- 5V/2A DC Adapter 1
- User Manual 1

Specifications

Product Model	LK-B30(12" Ball) LK-C30(12" Cube) LK-C40(16" Cube)
Material	Polyethylene & ABS
Power Source	Corded Electric
Working Voltage	AC 100-240V
Input	5V/2A
Rated Power	8W
Lumen	550-660lm
Color	RGB 5050 + W 2835
Number of Light Sources	RGB+white, total 200LEDS
Color Temperature	6400-6900K
Working Temperature	-10°to 40°C(14° to 104°F)
Controlled	Bluetooth APP/2.4G Remote control

Installing Your Device

1. Insert the other end of the cable into the DC charging port.
2. Power on the adapter.
3. Please press the switch on the bottom to activate the functions.

The operation of smart APP



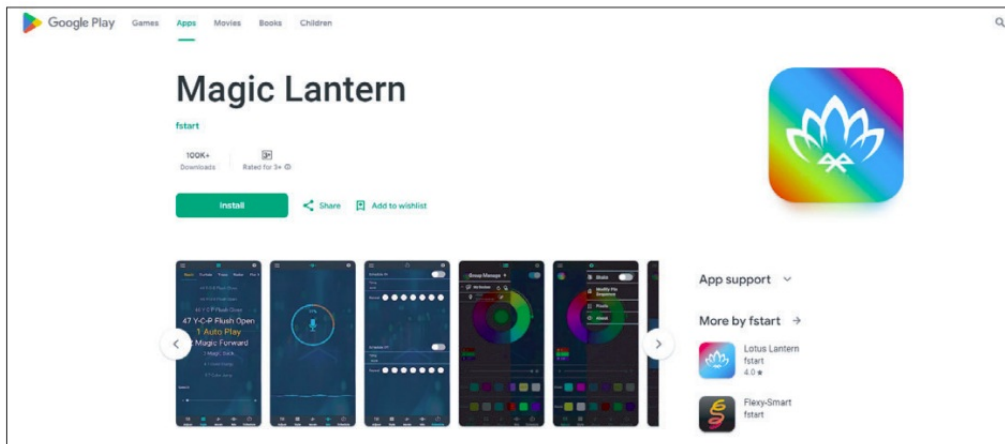
Step 1 Please scan the QR code below and install the App.



If you are an Android user, how do you download the app?

1. You can download it by scanning the QR code.

2. You can go to Google Play and download the “Symphony Lotus Lantern” application.



If you are an IOS user, how can you download the application?

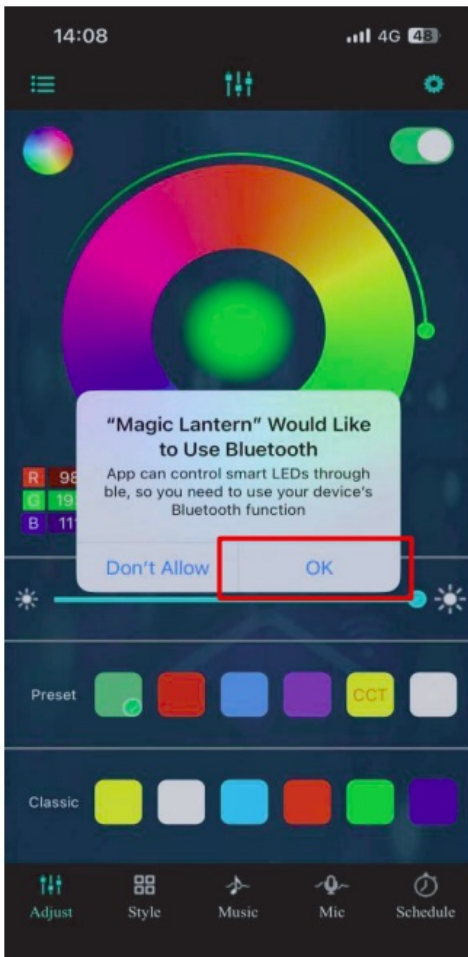
1. You can download it by scanning the QR code.
2. You can download “Magic Lantern” from the Apple Store.

Apple Store

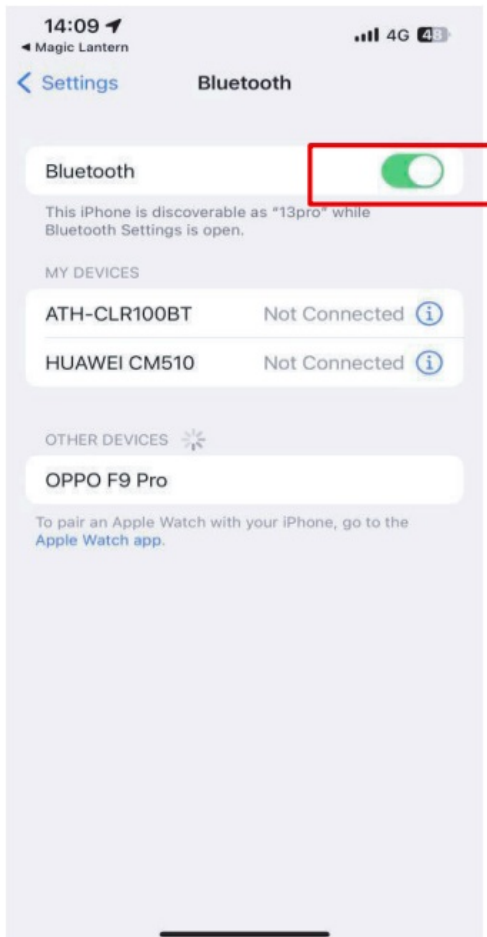


Step 2: Connect to Bluetooth for pairing

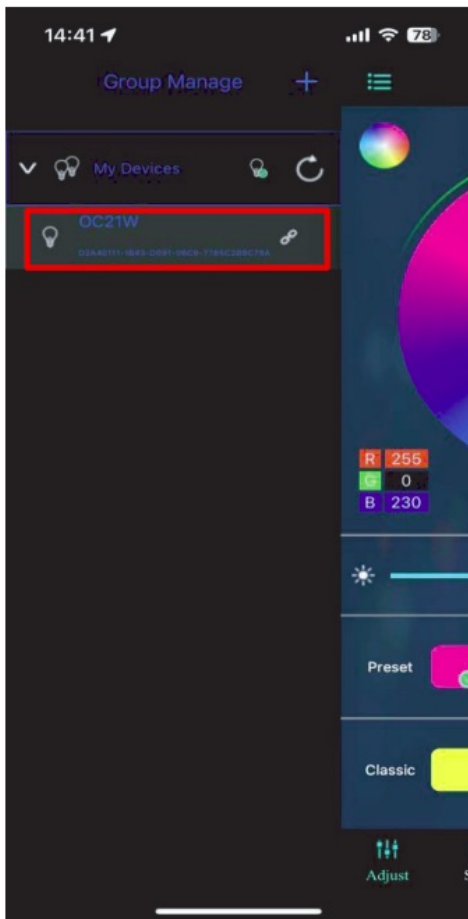
1. The first time you need to agree to use Bluetooth.



2. Turn on Bluetooth on your phone.

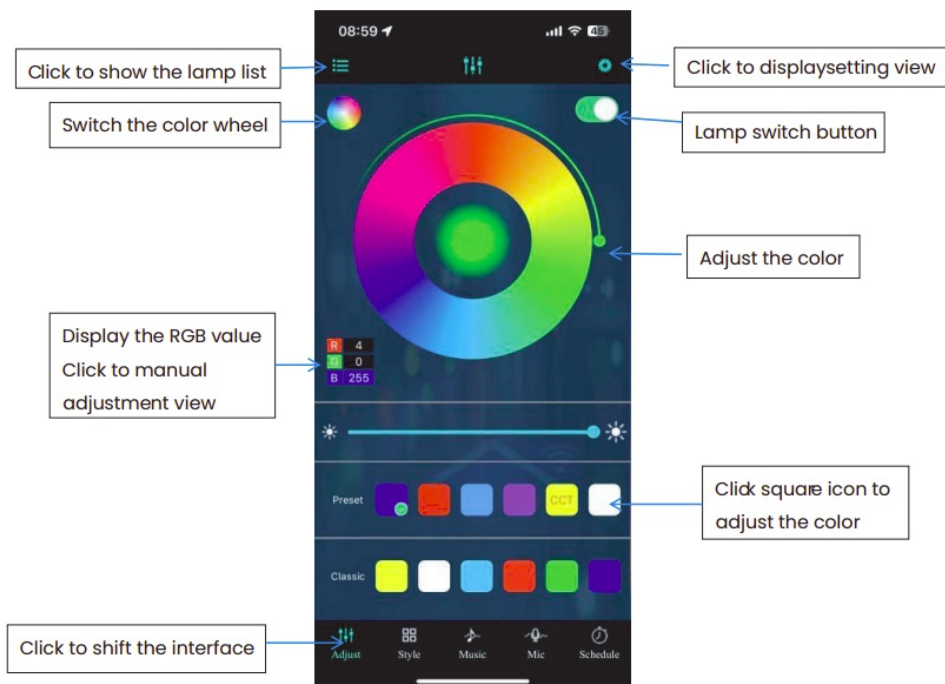


3. After turning on Bluetooth, you can find the new device in the "Group Manage" screen, please connect it.

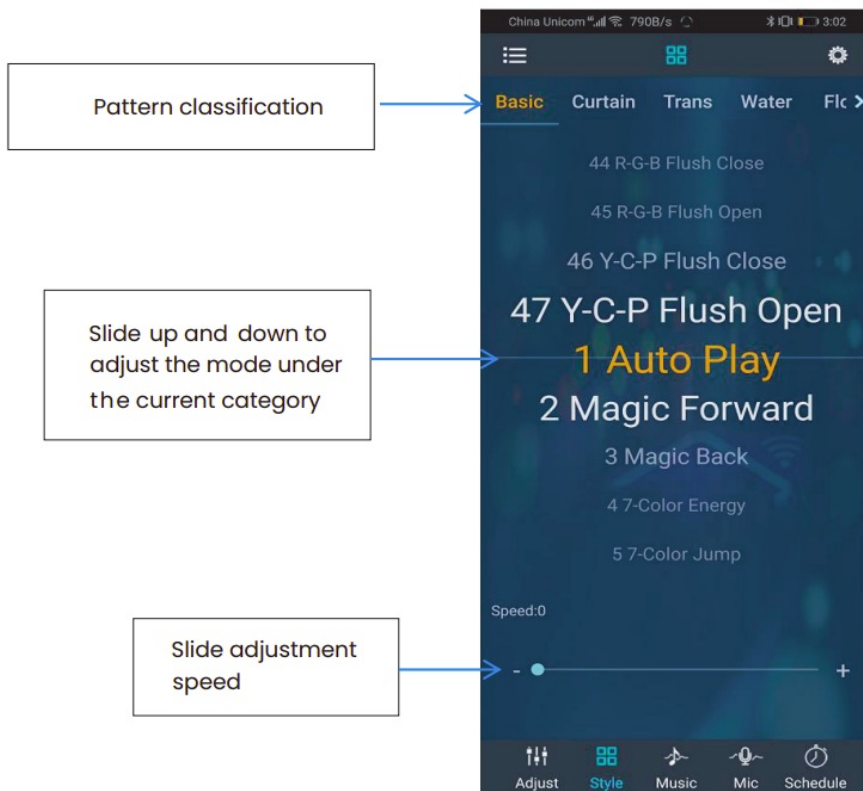


Step 3: Choose your favorite mood lighting

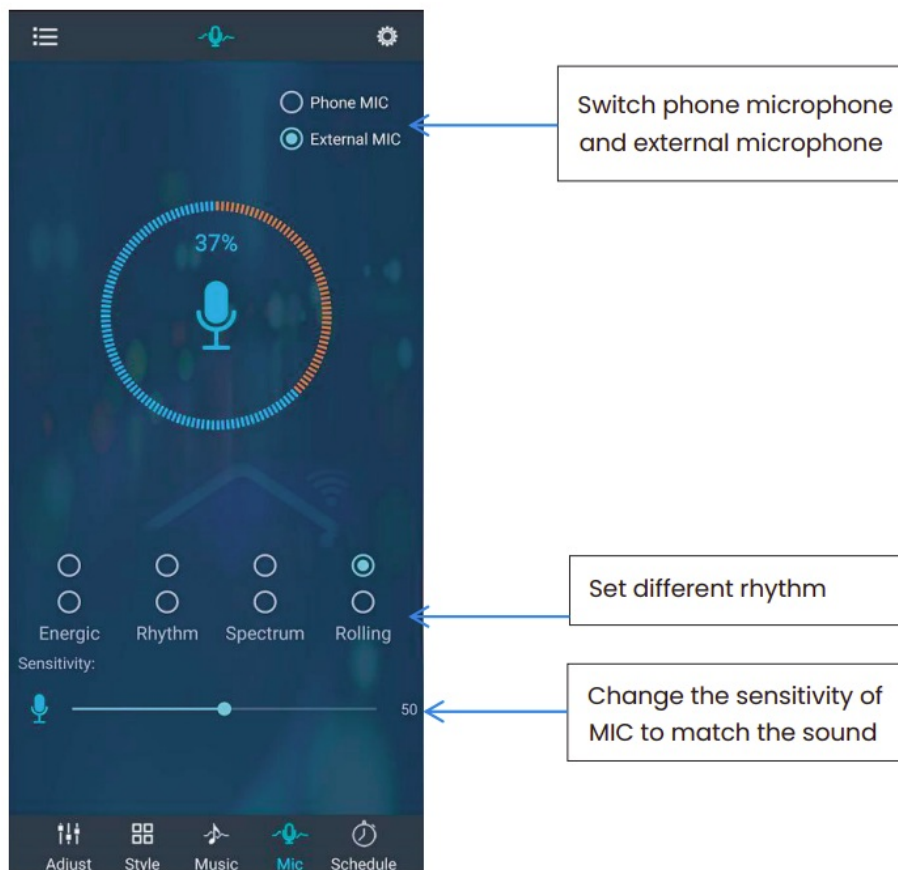
1. Color and Brightness Adjustment



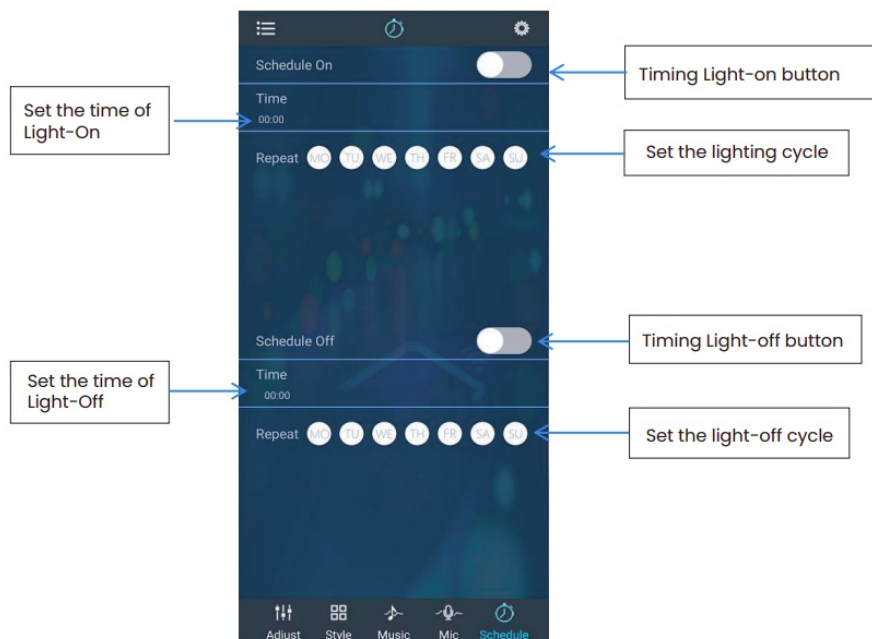
2. 220+ Lighting Modes



3. Music Sync & Microphone Rhythm

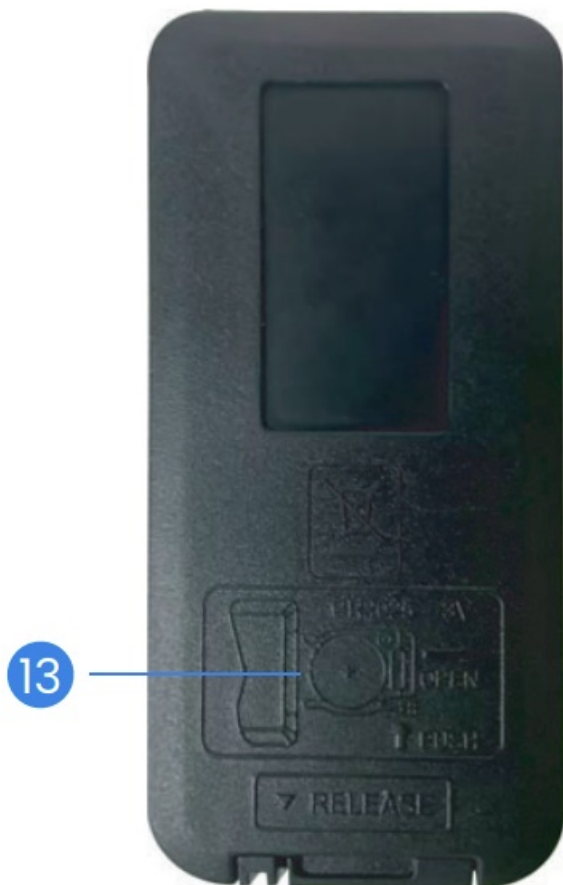
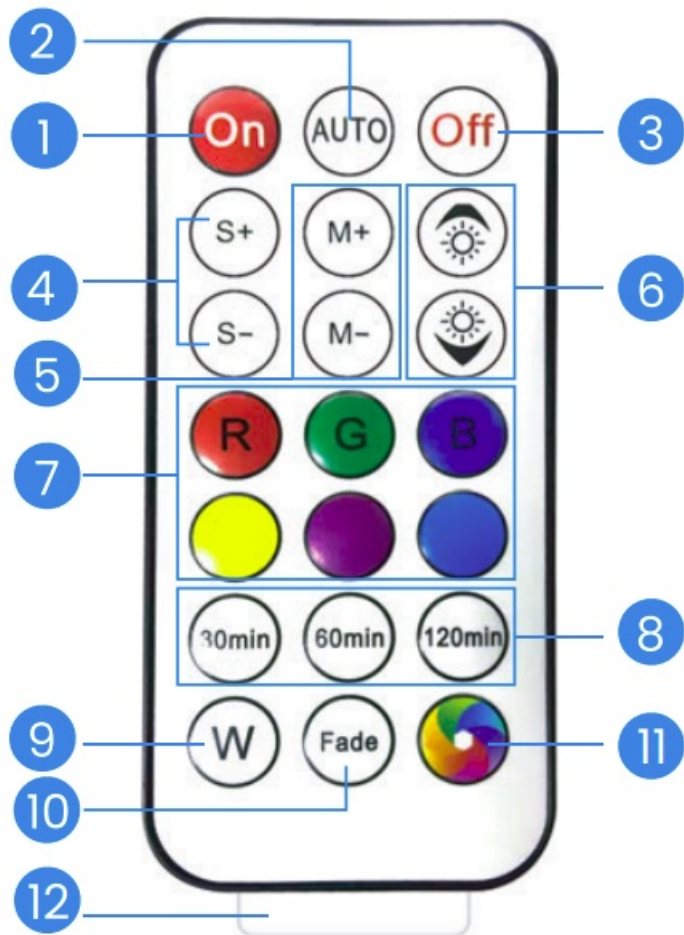


4. Create Helpful Schedules



Functions of 2.4G Remote Control

1. On
2. Colorful Light Modes Auto Cycle
3. Off
4. Speed +/-
5. Colorful Light Mode +/-
6. Brightness+/-
7. Quick Select Colors: 6 fixed static colors
8. Timer Setting
9. White Light
10. Cycle 6 colors with fading effect between colors
11. Colorful Light Modes Switch
12. Transparent Plastic Piece
13. 3V Button Cell Battery CR2025



Note:

- Sensing Distance: 32.8-26 feet.

- Single remote can control multiple lamps
- Remote is not waterproof.
- The battery can be replaced if needed, keep out of the reach of children and pets to avoid swallowing

Troubleshooting

1. Cannot connect to app.
 - Check if the device is powered on.
 - Check if Bluetooth on the smartphone is enabled, or try connecting with another smartphone.
 - When connecting for the first time, ensure the smartphone is near the device.
 - If the connection error still exists, please delete the connected device from “My Devices” on the app and reconnect it.
2. The remote control cannot work, the buttons don’t respond.
 - Check remote battery or pull out the plastic insulating film.
3. Only one user can control the device.
 - Each device can only be controlled by one account.
 - One App can control multiple lamps.
4. This APP program requires phones of system above Andriod 4.3 and iOS 8.0. Mobile phone configuration is not limited.
5. The LOFTEK Smart lights are designed to work specifically with Bluetooth connections and don’t have the capability to connect with or be controlled by voice assistants like Alexa or Google Assistant.

LOFTEK Warranty

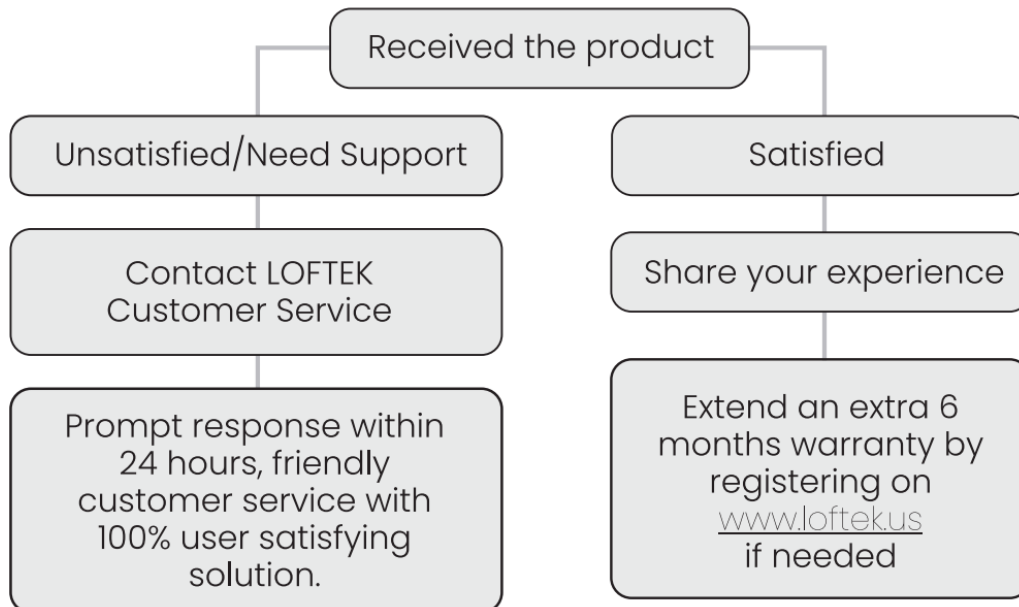
Information

LOFTEK shape lights purchased exclusively through official LOFTEK sales channels (LOFTEK, Amazon) come with a limited warranty. If you bought them from other channels or unauthorized third-party retailers, please contact the seller directly. These lights are protected by a 12-month warranty starting from the date of purchase. We want you to enjoy an amazing life with LOFTEK products. Remember to register on our website to extend your warranty.

The Limited Warranty Does Not Cover

- Failure to follow the safety information of this manual.
- Defects or damage resulting from accidents, neglect, misuse, or abnormal use; abnormal conditions or improper storage; exposure to liquid, moisture, dampness, sand or dirt; unusual physical, electrical or electromechanical stress.
- Scratches, dents and cosmetic damage, unless caused by LOFTEK.
- The tamper-evident label has been removed, defaced, damaged, altered or made illegible.
- Ordinary wear and tear.
- Defects or damage resulting from the use of the product in conjunction or connection with accessories, products, or ancillary/peripheral equipment not furnished or approved by LOFTEK.
- Any physical feature defects or damage resulting from improper testing, operation, maintenance, installation, service, or adjustment not furnished or approved by LOFTEK.

- Defects or damage resulting from external causes such as collision with an object, fire, flooding, dirt, windstorm, lightning, earthquake, exposure to weather conditions, theft, blown fuse, or improper use of any electrical source.
- Free warranty replacements and repairs are only valid in the country or region of purchase. Please contact LOFTEK Customer Support for more details.



Magic Lantern APP



Discover a wonderful life!



techsupport@loftek.us



www.loftek.us



@loftek.us Q



@loftekofficial



/loftekofficial

FCC Warnings:

This equipment has been tested and found to comply with the limits for a Class B digital device, pursuant to part 15 of the FCC Rules. These limits are designed to provide reasonable protection against harmful interference in a residential installation. This equipment generates, uses and can radiate radio frequency energy and, if not installed and used in accordance with the instructions, may cause harmful interference to radio communications. However, there is no guarantee that interference will not occur in a particular installation. If this equipment does cause harmful interference to radio or television reception, which can be determined by turning the equipment off and on, the user is encouraged to try to correct the interference by one or more of the following measures:

- Reorient or relocate the receiving antenna.
- Increase the separation between the equipment and receiver.
- Connect the equipment into an outlet on a circuit different from that to which the receiver is connected.
- Consult the dealer or an experienced radio/TV technician for help.

Caution: Any changes or modifications to this device not explicitly approved by manufacturer could void your authority to operate this equipment.


This device complies with part 15 of the FCC Rules. Operation is subject to the following two conditions:

(1) This device may not cause harmful interference, and (2) this device must accept any interference received, including interference that may cause undesired operation.

This equipment complies with FCC radiation exposure limits set forth for an uncontrolled environment. This equipment should be installed and operated with minimum distance 20cm between the radiator and your body.

LOFTEK®

Documents / Resources

 <small>Smart LED Colorful Shape Lamp www.loftek.com</small>	LOFTEK LK-B15 Smart LED Colorful Shape Lamp [pdf] User Manual LK-B15, 2AZFC-LK-B15, 2AZFCLKB15, LK-B15 Smart LED Colorful Shape Lamp, Smart LED Colorful Shape Lamp, LED Colorful Shape Lamp, Colorful Shape Lamp, Shape Lamp, Lamp
--	---

[Manuals+](#)