



# LOCKWOOD FE Series Panic Exit Device with Nightlatch Installation Guide

[Home](#) » [LOCKWOOD](#) » LOCKWOOD FE Series Panic Exit Device with Nightlatch Installation Guide 

## Contents

- [1 LOCKWOOD FE Series Panic Exit Device with Nightlatch](#)
- [2 DOOR PREPARATION](#)
- [3 PANIC EXIT DEVICE HEAD AND NIGHTLATCH INSTALLATION](#)
- [4 HINGE SIDE PLATE FITMENT](#)
- [5 PANIC EXIT DEVICE BAR CUTTING](#)
- [6 BAR ASSEMBLY](#)
- [7 BAR INSTALLATION](#)
- [8 STRIKE INSTALLATION](#)
- [9 TEMPLATE 1](#)
- [10 TEMPLATE 2](#)
- [11 Documents / Resources](#)
- [12 Related Posts](#)



## LOCKWOOD FE Series Panic Exit Device with Nightlatch



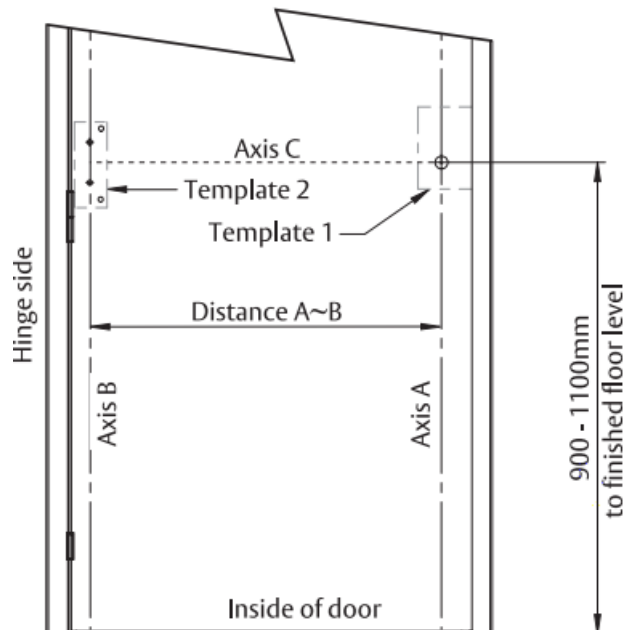
## DOOR PREPARATION

- Determine height of panic exit device:

For new installations, 900 – 1100mm above FFL is recommended.

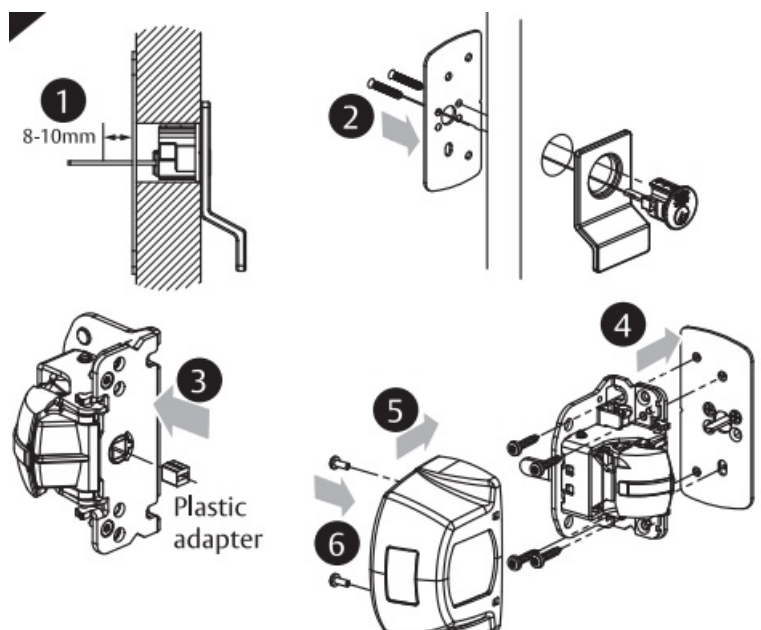
- Using template 1 provided, complete nightlatch door preparation.
- Axis B should be greater than 50mm from the door frame. Ensure distance A~B is no more than 80mm longer than supplied panic exit device extrusion.

Drill pilot holes on hinge side of door using Template 2.



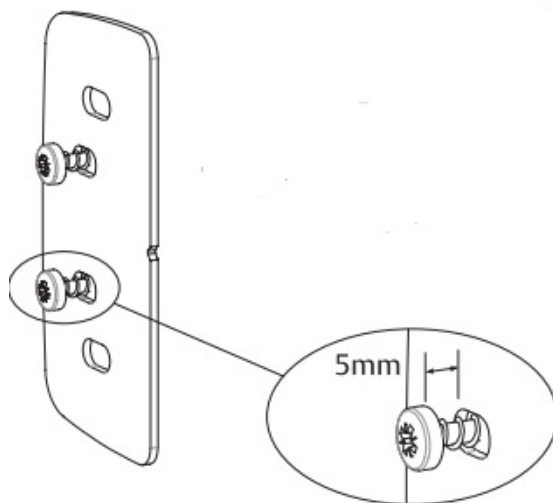
## PANIC EXIT DEVICE HEAD AND NIGHTLATCH INSTALLATION

- Determine length of tail bar suitable for install and cut if required. Ensure that tail bar does not protrude by more than 8-10mm from the mounting plate on the other side of the door.
- Secure the nightlatch assembly and mounting plate with MS countersunk screws provided.
- Gently tap the plastic adapter with a rubber mallet into the spindle hub of the panic exit head until it sits flush with the hub. Ensure the slot in the adapter is horizontal.
- Install the panic exit head onto the door with four 04.8 x 25mm pan head screws through the mounting plate.
- Retract the latch fully to fit the cover on the head. Secure the cover with 2 fixing screws.



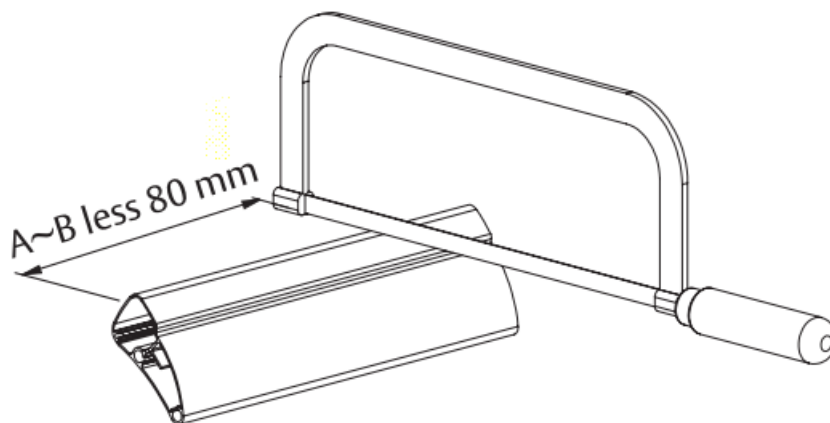
## HINGE SIDE PLATE FITMENT

- Install two middle screws through the back plate into pilot holes from template 2.
- Do not drive the screws fully, leaving a 5mm gap between screw head and plate.



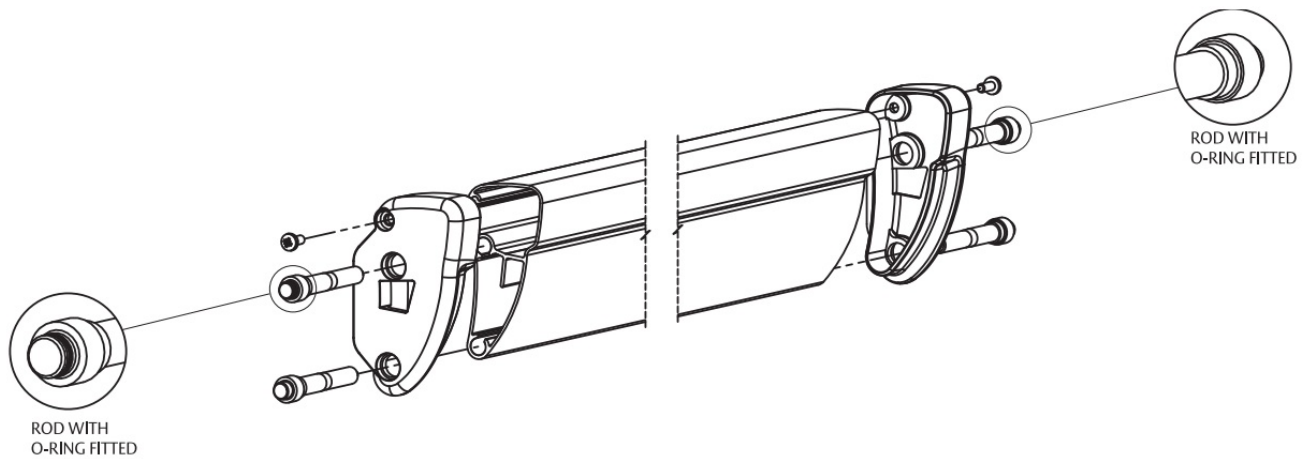
## PANIC EXIT DEVICE BAR CUTTING

- Measure distance A~B, cut panic exit device bar to A~B less 80mm.
- Ensure cut is square and all debris is removed from the bar.



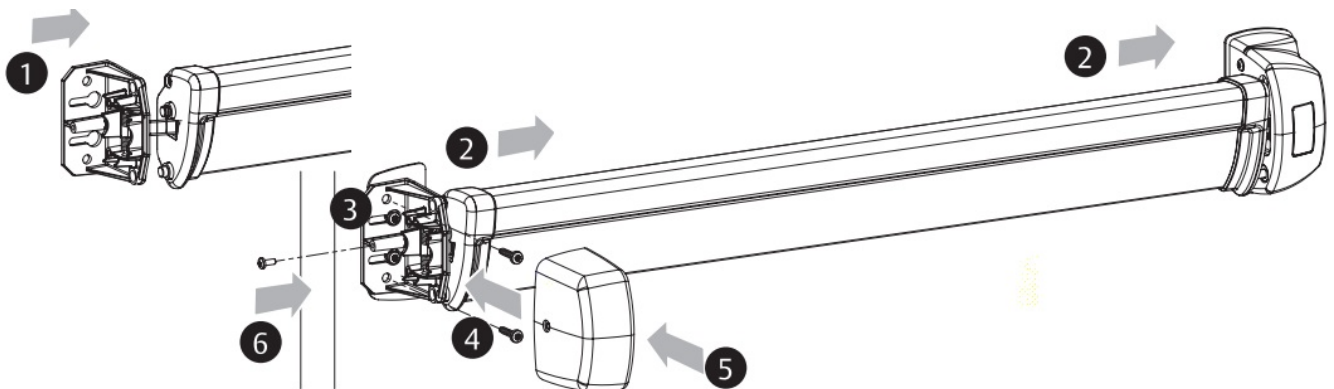
## BAR ASSEMBLY

- Fit caps onto bar on either side.
- Secure cap with fixing screw.
- Install rods into bar, ensuring rod with O-ring fitted is installed in upper hole. Tap gently with a hammer until rods hit a hard stop.



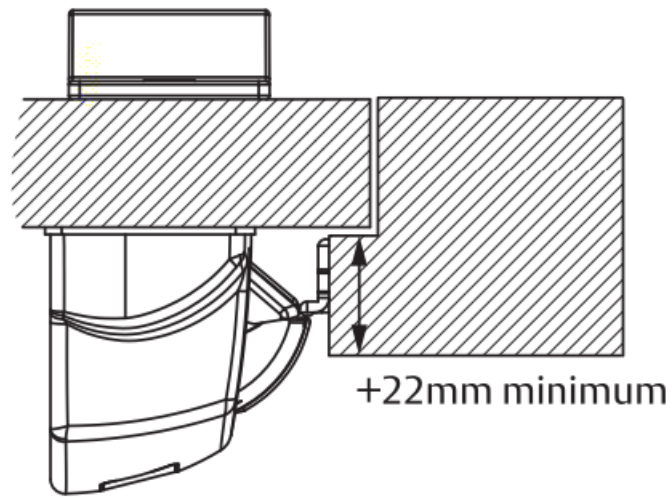
## BAR INSTALLATION

- Fit hinge side mechanism into bar ensuring that the spring is engaged in the square hole and lower rod is fitted into its matching hole.
- While aligning the front rods into the panic exit head, fit the hinge side mechanism's keyhole fittings over the screws and push entire mechanism towards the nightlatch.
- Tighten the screws and test the panic exit device function.
- Drill two Ø3 x 25 pilot holes and fit screws to secure the hinge side mechanism.
- Fit cover and adjust positioning to align cover and mounting plate if necessary. Secure cover with fixing screw.

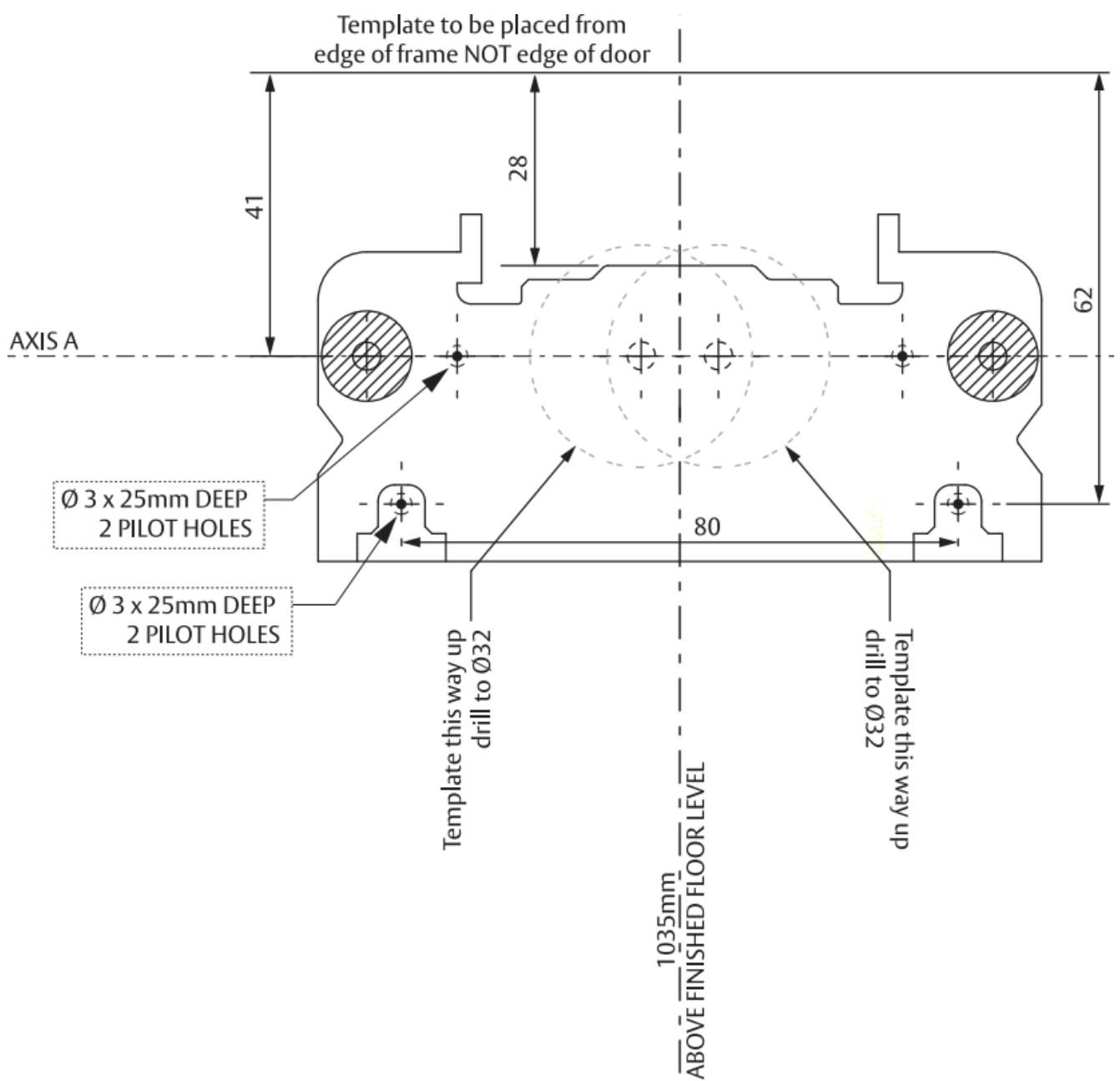


## STRIKE INSTALLATION

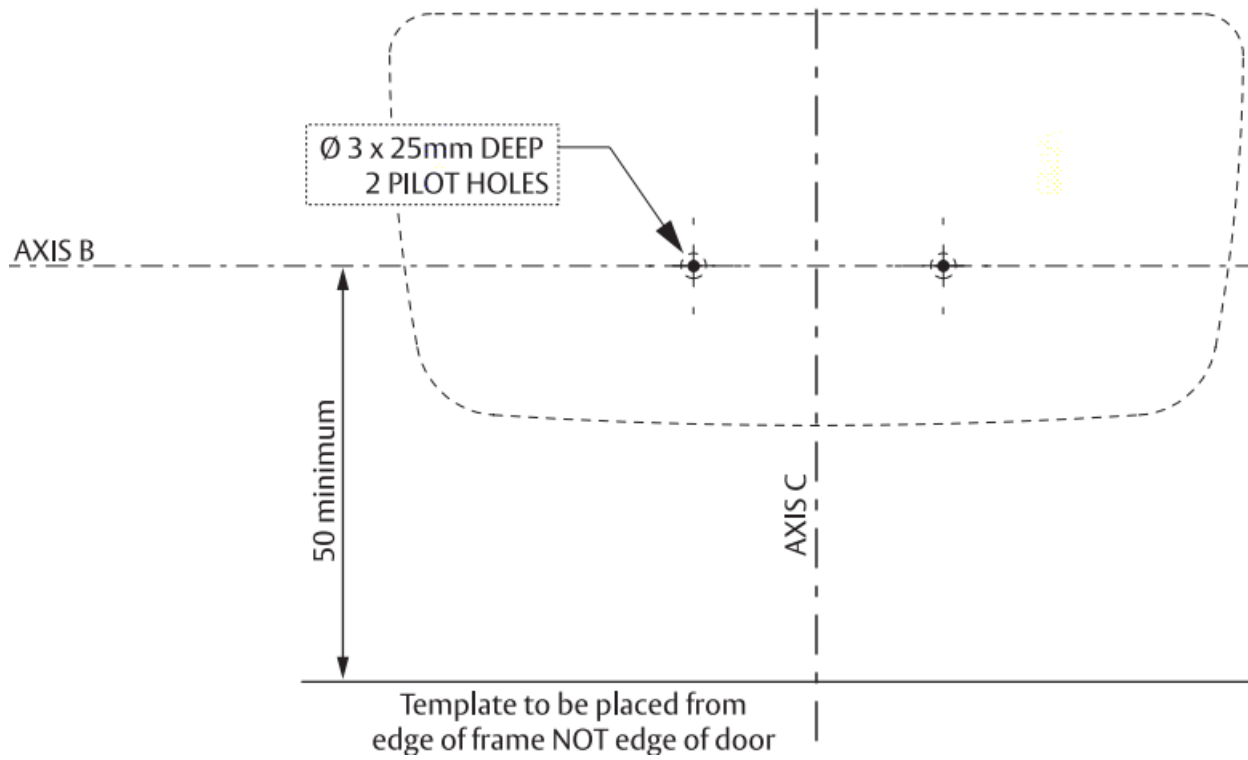
- Please note that this strike installation is for rebated doors only, minimum 22mm thickness. If install doesn't apply, please refer to original FLUID panic exit device instruction sheets.
- Ensure height of centre of strike is in line with Axis C.
- Test assembly to ensure that panic exit device releases easily when bar is depressed.



## TEMPLATE 1



## TEMPLATE 2



ASSA ABLOY Australia Pty Limited, 235 Huntingdale Rd, Oakleigh, VIC 3166 ABN 90 086 451 907 ©2021  
Experience a safer and more open world

## Documents / Resources

	<p><a href="#">LOCKWOOD FE Series Panic Exit Device with Nightlatch</a> [pdf] Installation Guide FE Series, Panic Exit Device with Nightlatch, Panic Exit Device, Exit Device, Panic Exit, Exit</p>
--	---