



LOCKWOOD Elevation Keypad Touch Screen Display Instruction Manual

[Home](#) » [LOCKWOOD](#) » LOCKWOOD Elevation Keypad Touch Screen Display Instruction Manual 

Contents

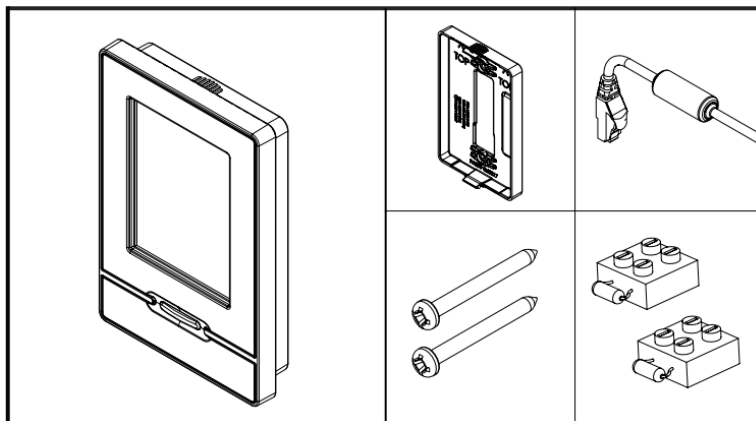
- 1 LOCKWOOD Elevation Keypad Touch Screen Display
- 2 Items Supplied
- 3 Tools Required
- 4 Installation tips
- 5 Keypad Circuit Diagram
- 6 CALIBRATION AND BASIC FUNCTION
- 7 TECHNICAL SPECIFICATION
- 8 Documents / Resources
- 9 Related Posts



LOCKWOOD Elevation Keypad Touch Screen Display



Items Supplied



- Keypad
- Wall Bracket
- 1m Cat 6 / Cat 5e Cable
- Fixing Screws (x2)
- Terminal Resistor Blocks (x2)

Tools Required

- Hobby Knife
- Small Screwdriver
- Phillips Screwdriver
- Long Nose Pliers
- Wire Strippers

Serial Number Label

DATE:

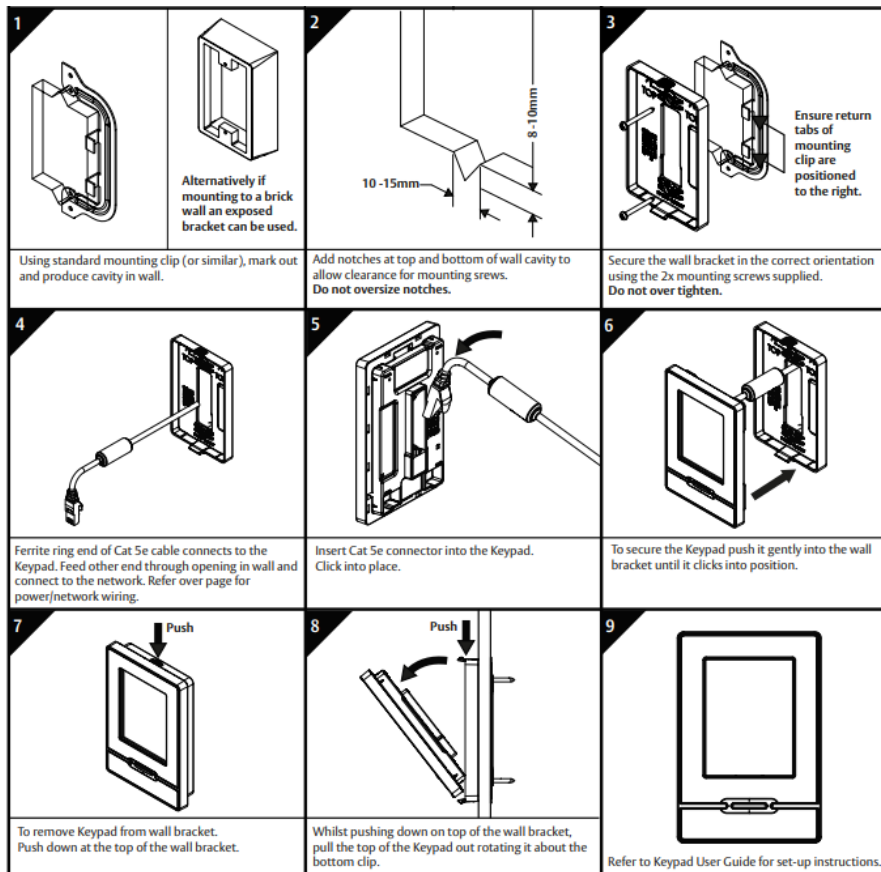
DD/MM/YY

NUMBER:

0123456789

IMPORTANT: Ensure the Serial Number is noted on the back of the Keypad User Guide. This will be used for the programming of the Key/Control System.

Installation tips

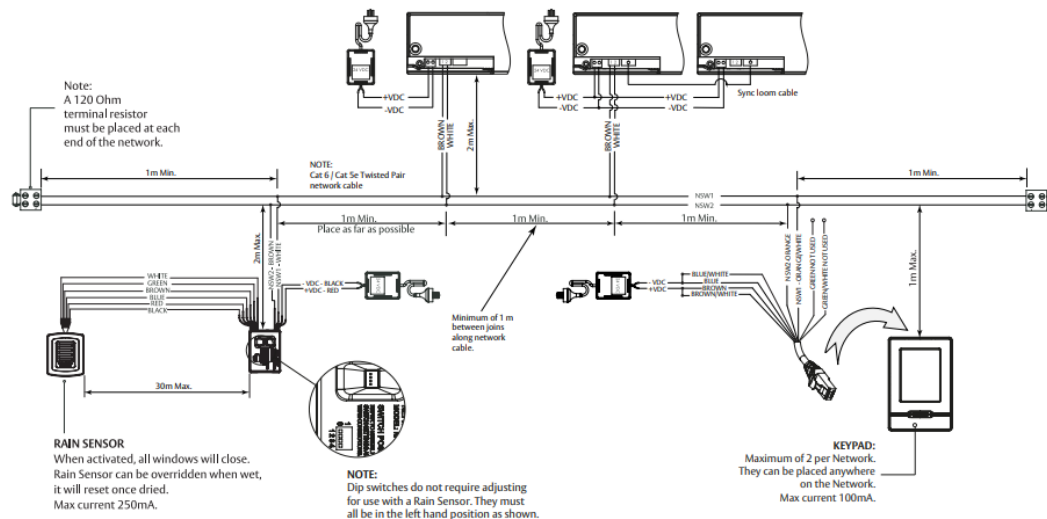


- The power connection on the actuator is not polarity conscious.
- Cat 6 / Cat 5e Twisted Pair Network Cable used for the network cable.
- A 120 Ohm resistor must be connected at each end of the network cable.
- The network signal wires (NSW1 and NSW2) are polarity conscious and must not be shorted or connected the wrong-way around when connecting to devices.
- Each device must be connected to a new point along the network cable so devices are connected in a 'daisy chain'.
- Maximum network cable length is 300 metres
- A maximum of 32 devices can be connected to one network. For example 28 actuators and 2 keypads and 2 rain sensors.
- A 'synchronised actuator' is not counted in the number of connected devices because it acts as a slave.
- A maximum of 4 rain sensors and 2 keypads can be connected to a keypad network.
- Keypads and wall switches are not recommended
- The network cable can be 'looped down' to the actuators and network adaptors so connecting
- Ensure all joins along the network cable are made properly. Soldering the joins is recommended.
- Refer to Keypad installation and programming instructions for additional features.

Rain Sensor

- When the rain sensor detects rain, all the windows connected to the network will close together.
- The windows can to be opened again by pressing the wall switch.
- The windows can also be opened during rain from the wall switch which overrides the rain sensor. However the rain sensor will not reactivate until it has dried out and reset.

Keypad Circuit Diagram



KEY:

- **NSW1** = Network Signal Wire 1.
- **NSW2** = Network Signal Wire 2.
- **NO** = Normally Open contact.
- **NC** = Normally Closed contact.

CALIBRATION AND BASIC FUNCTION

• Calibration

- Once all actuators have been registered the system will proceed to a calibration screen.
- Press Calibrate Actuators. All actuators will open and close twice.
- If a warning is displayed 'Window Obstructed' this means an actuator has performed a safety stop.
- Locate the window and check for obstruction.
- Press Home and then Close All. (Only the obstructed window will close) Then press Calibrate Actuators.
- Refer to 'Keypad Programming and User Guide' for further information.

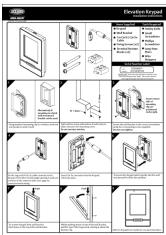
• Powering Up the System

- Ensure all wiring connections are complete before powering up. Ideally, the actuators should be powered up before the keypads to ensure the keypads register all actuators on the network.
- If this isn't possible and actuators have not been recognised by the keypad, press Reset Keypad in the Setup page.
- Then proceed to Zone Setup to allocate actuators that have not been registered.

TECHNICAL SPECIFICATION

INPUT VOLTAGE	24V DC
MAXIMUM CURRENT	750mA per Actuator
OPENING TIME	Approx 40 sec
OVERALL DIMENSIONS	308mm x 44mm x 32mm
OPERATING TEMPERATURE	0° - 50°C
HUMIDTY	0% - 95%
NETWORK CABLE LENGTH	300m Max

Documents / Resources



[LOCKWOOD Elevation Keypad Touch Screen Display](#) [pdf] Instruction Manual
Elevation Keypad Touch Screen Display, Keypad Touch Screen Display, Touch Screen Display,
Screen Display