



LOCKWOOD 001 Touch Plus Smart Deadlatch Installation Guide

[Home](#) » [LOCKWOOD](#) » LOCKWOOD 001 Touch Plus Smart Deadlatch Installation Guide 

LOCKWOOD 001 Touch Plus Smart Deadlatch Installation Guide



Contents

- 1 OVERVIEW
- 2 INSTALLATION HARDWARE
- 3 PREPARE YOUR DOOR
- 4 REMOVE MOUNTING PLATE FROM LOCKSET
- 5 CUT CONNECTING BAR
- 6 SECURE MOUNTING PLATE
- 7 MOUNT EXTERNAL KEYPAD
- 8 CONNECT THE BATTERY PACK
- 9 ASSEMBLE LOCKSET
- 10 INSERT HOME MODULE, DOORSENSE MAGNET & BATTERIES
- 11 MOUNTING STRIKE
- 12 CHECK POINTS AFTER INSTALLATION
- 13 CONNECTING YOUR LOCK TO THE YALE HOME APP
- 14 Documents / Resources
- 15 Related Posts

OVERVIEW



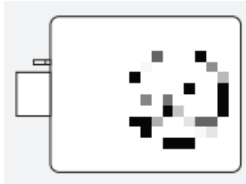
Please read the instructions before fitting and using the 001 Touch Plus Smart Deadlatch. The functions and design of this product can be changed without prior notice for performance and quality improvements

INSTALLATION HARDWARE

External Keypad



001 Deadiach

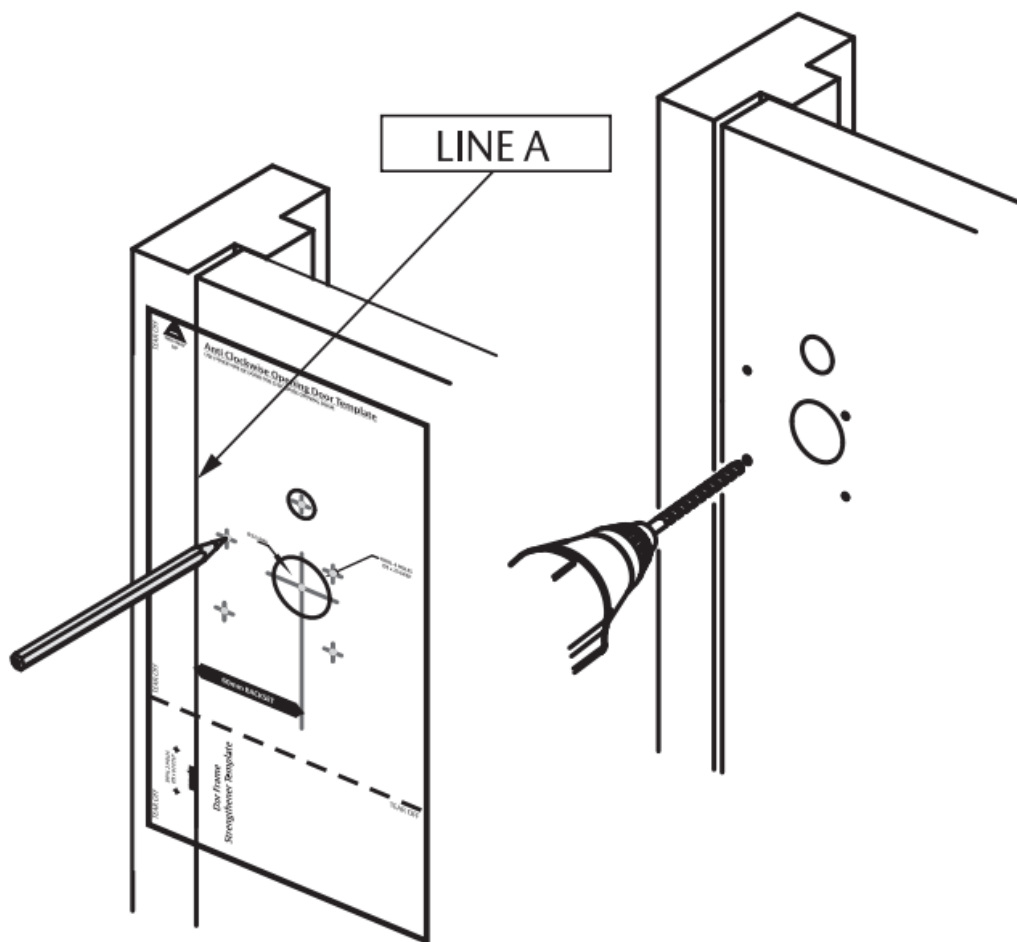


Battery Pack



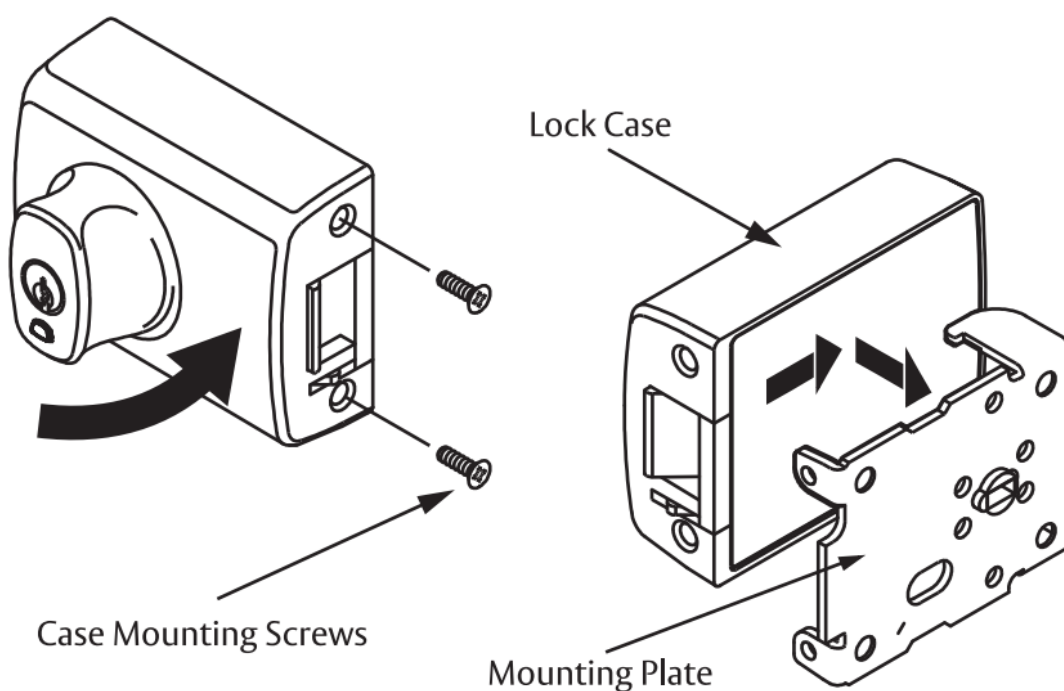
- L Shape Home Network Module
- DoorSense™ Magnet
- DoorSense™ Magnet Cover
- Strike Plate
- Door Frame Strengthener
- Key Tag x 2
- Mechanical Keys x2
- AA Batteries x 4
- Timber Fixing Screws x 7
- Battery Pack Retainer Screw x3 (20,30 & 40mm)
- Self tapping battery pack fixing screw x 1
- Keypad Retainer Screws x6 (20, 30 & 40mm)
- Door Frame Strengthener Screws x 2
- Fit the lock using a hand held Phillips screw driver to avoid cross threading fixing screws. If using a cordless il
lease ensure it set to low speed & torqu

PREPARE YOUR DOOR



- Select CLOCKWISE OR ANTI-CLOCKWISE side of template to suit door opening direction
- Position template and prepare door as specified on template. **WARNING** : Care must be taken when drilling and affixing screws to jamb. Screws must NOT come in contact with electrical wires in jamb.

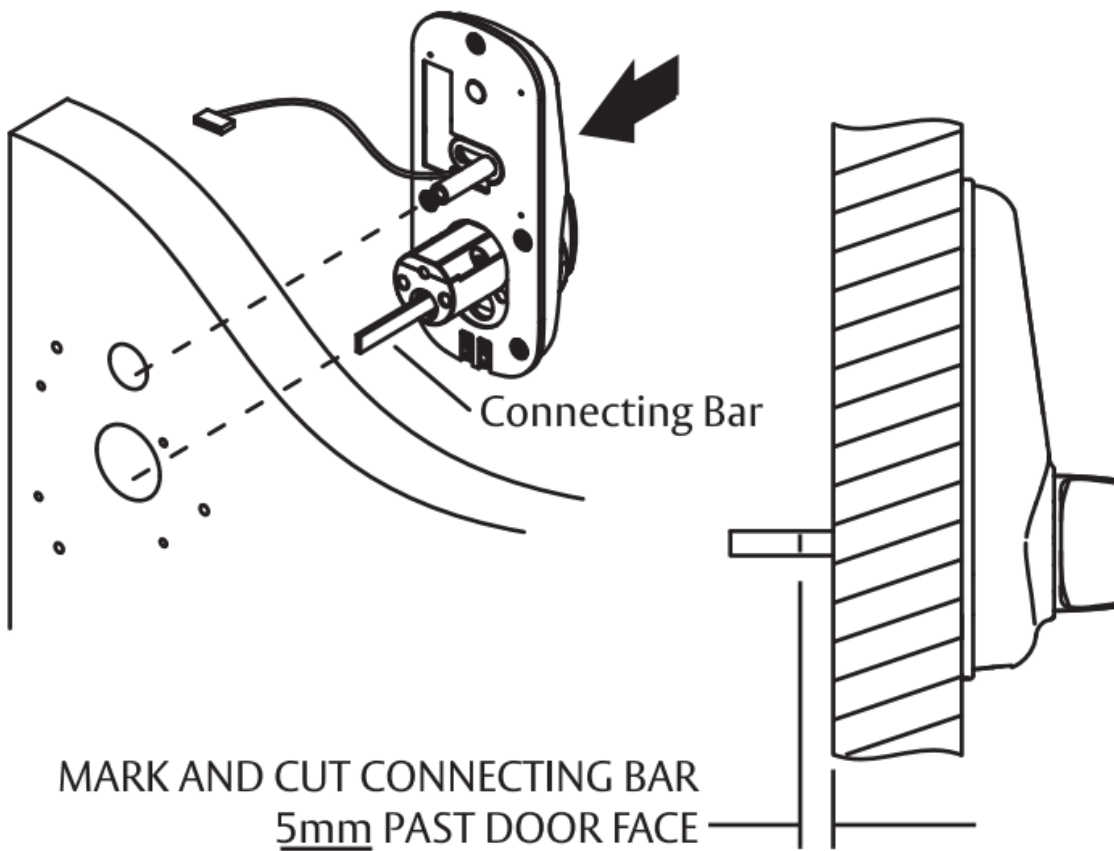
REMOVE MOUNTING PLATE FROM LOCKSET



- To remove the mounting plate from the lockset, rotate the turnbody fully clockwise to HOLD BACK position.

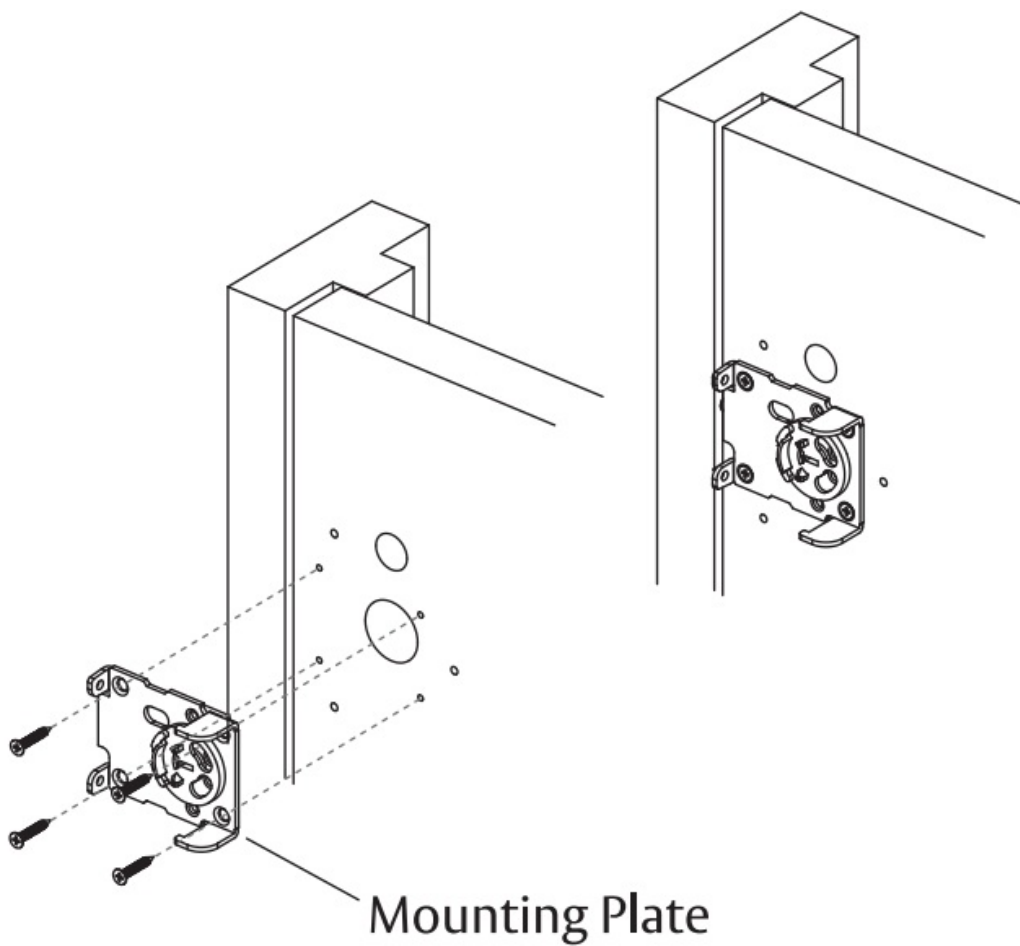
- Remove the two case mounting screws from lock case.
- Take mounting plate out of lock case.

CUT CONNECTING BAR



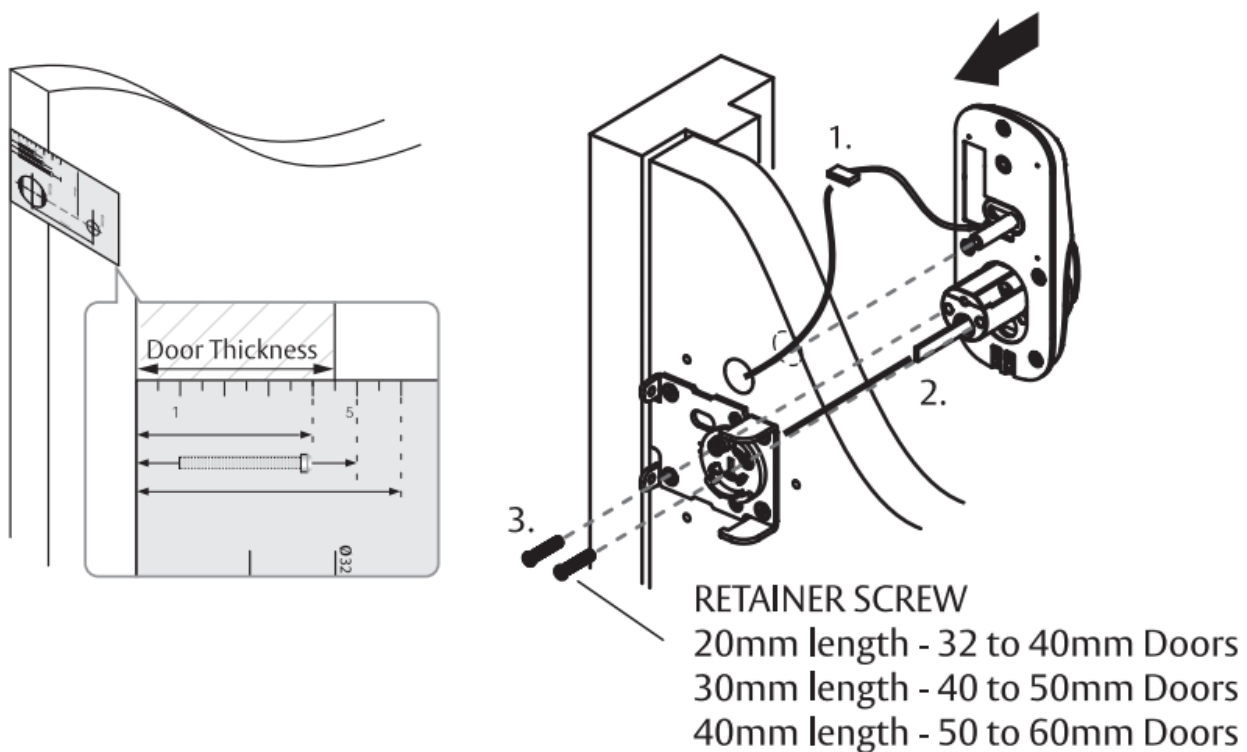
- Position the 001 Touch Plus external keypad in the door as shown.
- Mark the Connecting Bar with 5mm protrusion past the door face.
- Remove the keypad and CUT CONNECTING BAR TO THE 'CORRECT LENGTH. Refer to the Connecting Bar Length Template.

SECURE MOUNTING PLATE



- Fix the mounting plate with the correct length mounting plate 4x timber fixing screws provide

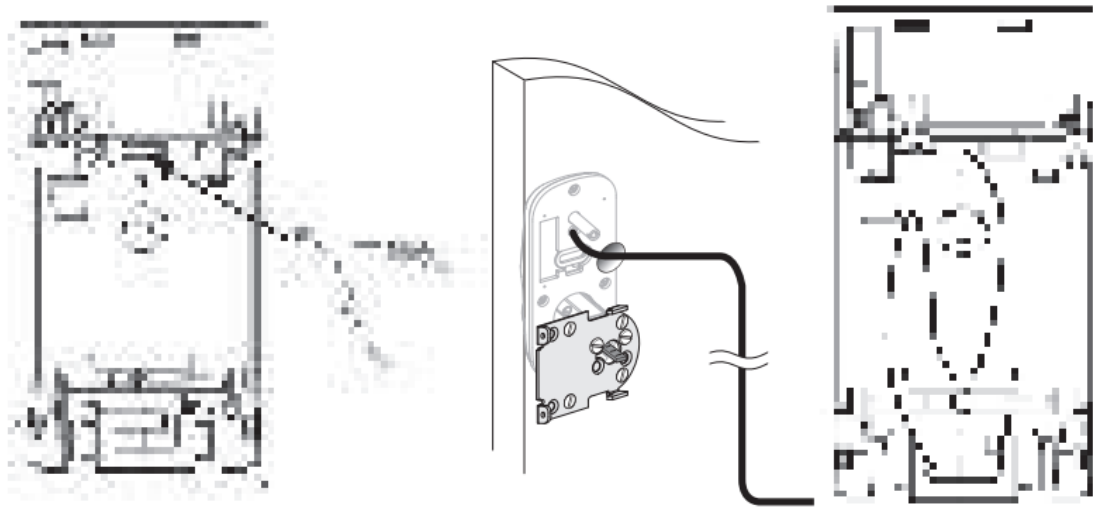
MOUNT EXTERNAL KEYPAD



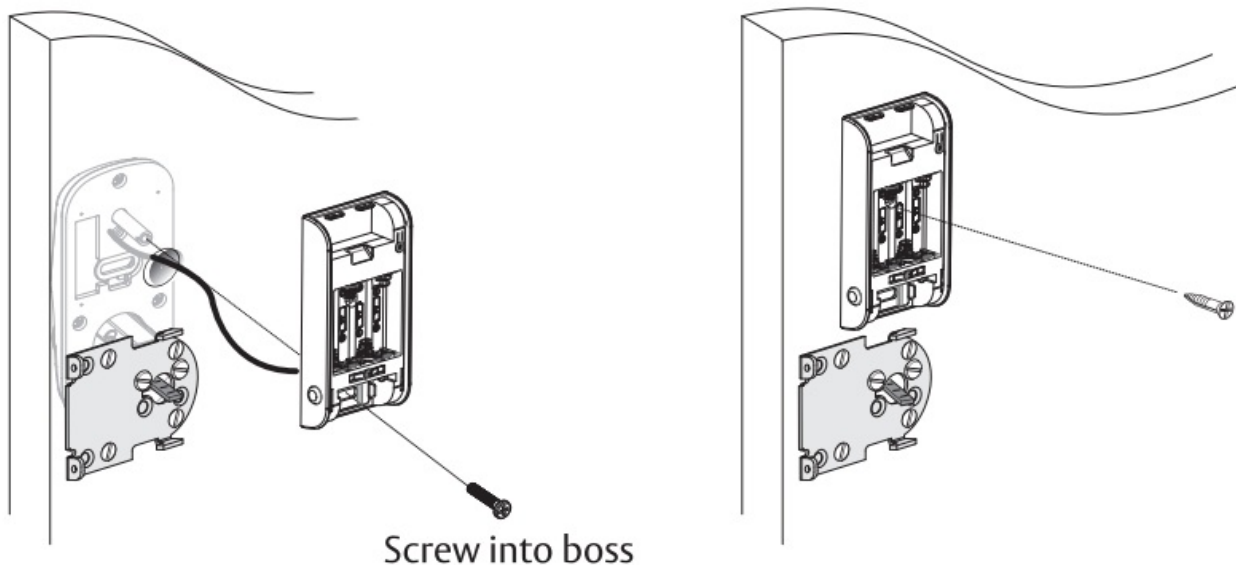
- Feed the external keypads CONNECTOR CABLE through hole in the door (1.)

- With the CONNECTING BAR VERTICAL, assemble the keypad to the door and engage connecting bar into the hub slot of the mounting plate. (2.)
- Place the RETAINER SCREWS (x2) through slot in hub (3.) and secure the external keypad cylinder. Ensure that both screws are tightened firmly and hub is free to rotate.
- Use the template provided to choose correct screw length according to your door thickness

CONNECT THE BATTERY PACK

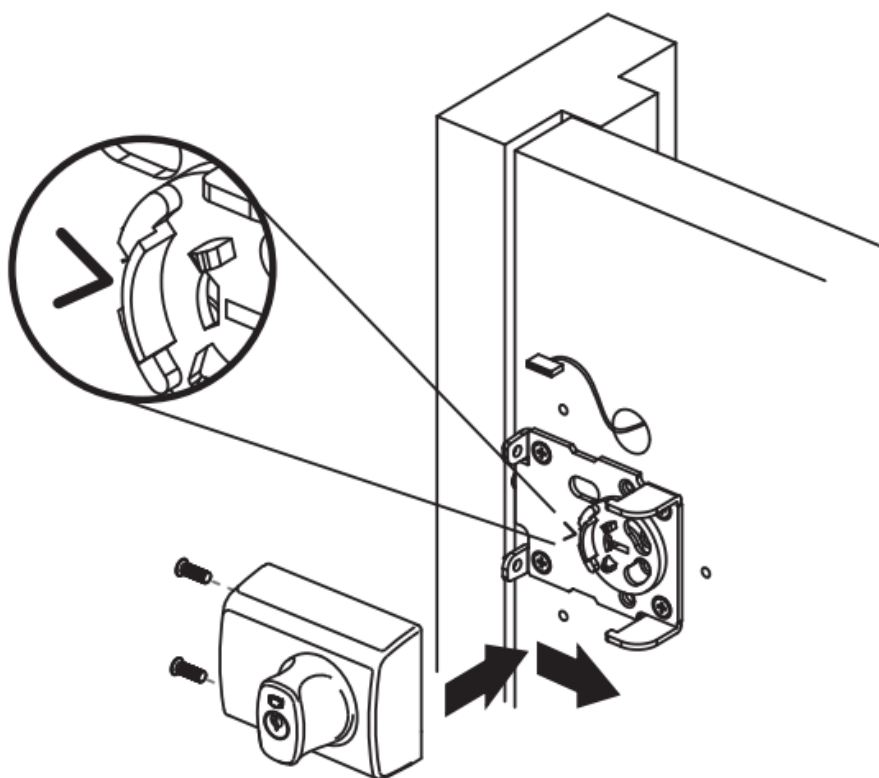


- Connect the cable to the top of the battery pack into the 10 pin connection slot. Ensure the cable is securely in place.
- Feed the cable through the metal slot. Then being careful not to overlap, zig-zag any excess cable behind the battery pack.



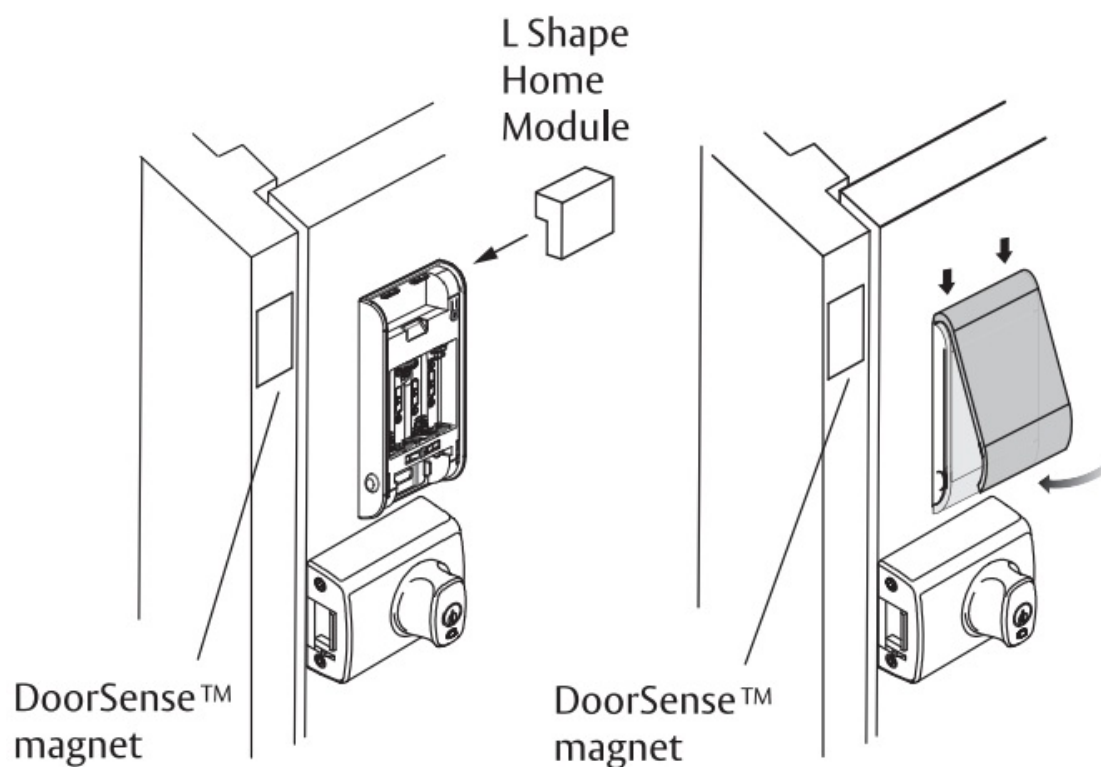
- Make sure the battery pack is square with the door.
- Align the metal slot with the keypad's top fixing post. Take the battery pack retainer screw and fix it into place. Use the same length screw as per step 5. Then take the Self tapping battery pack screw and secure the case.

ASSEMBLE LOCKSET



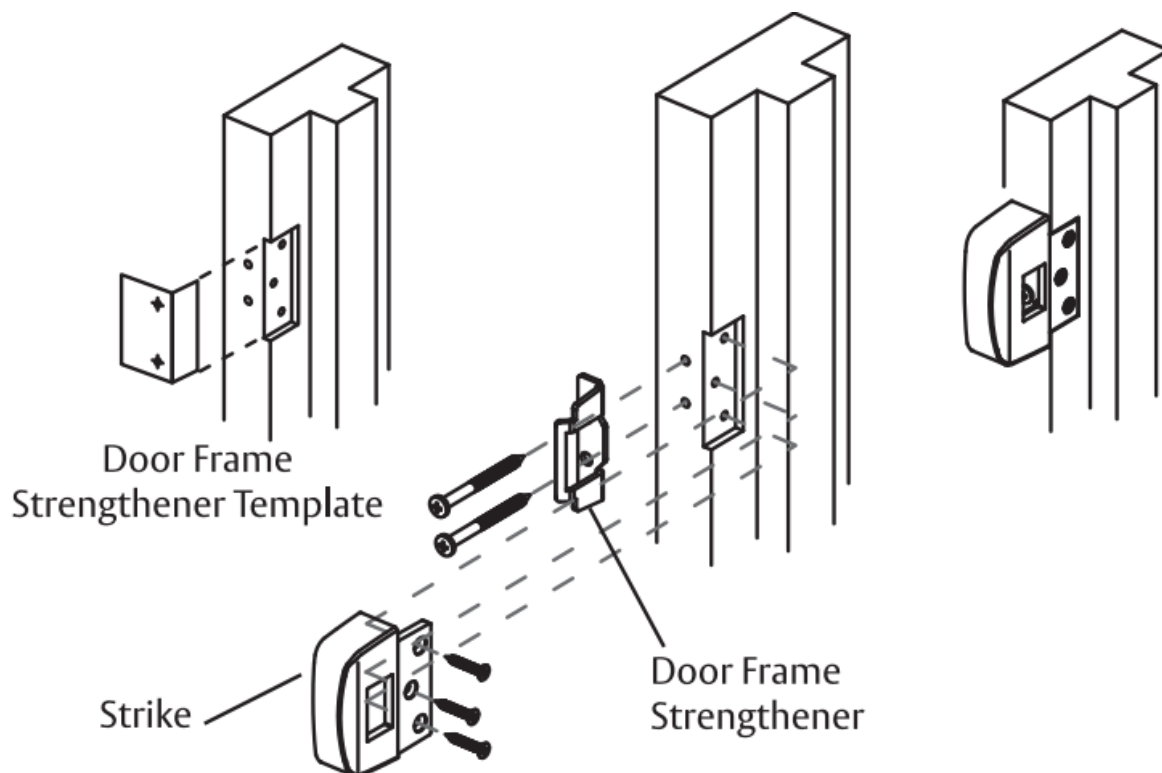
- Rotate the turnknob fully clockwise to HOLDBACK position.
- Ensure the notch on hub is aligned with the V visible on the mounting plate as shown. Fit the lock case body to the mounting plate as shown.
- Secure Lock Case to the mounting plate using the two case mounting screws.

INSERT HOME MODULE, DOORSENSE MAGNET & BATTERIES



- Insert L shape Home Module to the slot at the top of the battery pack.
- Taking the DoorSense , remove the film from the back and align the magnet level with the Home module and attach it to the door frame. If you have a light coloured door frame, we recommend placing the white magnet cover over the magnet to allow it to blend in.
- Insert the 4xAA batteries into the battery case, then close the cover,
- A series of beeps will sound after installing the batteries, powering up your lock.

MOUNTING STRIKE



- Position the strike on jamb directly opposite the lock case and mark outline of strike flange on jamb edge.
- Mortice the area out to fit the strike flush. Note: 3mm max. gap between lock and installed strike.
- Position door frame strengthener template in strike flange mortice as shown above.
- **WARNING:** Care must be taken when drilling and affixing screws to jamb. Screw must NOT come in contact with electrical wires in jamb. Mark and drill holes as specified on template.
- Fit and fix the door frame strengthener using two door frame strengthener screws.
- Locate striker over door frame strengthener and secure using three timber fixing screws.

Note: Pre-drill 3mm x 25mm deep for woodscrews,

CHECK POINTS AFTER INSTALLATION

Make sure to leave the door open when registering your PIN because you may accidentally lock the door while trying to register or change your PIN code.

- Touch the keypad with your palm to wake up the keypad.
- Enter the PIN code 123456 and enter* button or touch the keypad with your palm to open the door.
- Turn the knob handle several times to retract the latch bolt.
- The knob handle will not retract the latch bolt after a few seconds.

PLEASE NOTE: Remember to change your master code after installation.



To avoid any possibility of being locked out, do not close the door until a PIN code has been successfully registered to allow access back in.

CONNECTING YOUR LOCK TO THE YALE HOME APP

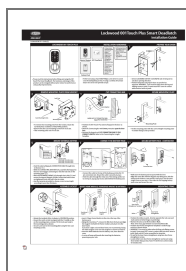
Now the lock is ready to connect with Yale Home App allowing user to get mobile App functionality. Please refer to 'Connecting with Yale Home App' section of the user manual. NOTE: TO ENABLE MOBILE APP FUNCTIONALITY

'WE HIGHLY RECOMMEND TO CONNECT YOUR LOCK WITH YALE HOME APP IMMEDIATELY AFTER SETTING UP THE MASTER CODE.

For security reasons, when the lock gets registered with Yale Home App, the lock enables 'App mode' and prevents the user to register the credentials from keypad (such as: add/remove user code [key tag except the master code)

All existing credentials (user code | key tag) will be erased upon initialisation except the master code. It is HIGHLY RECOMMENDED to register the credentials through Yale Home App only.

Documents / Resources



[LOCKWOOD 001 Touch Plus Smart Deadlatch](#) [pdf] Installation Guide
001, 001 Touch Plus Smart Deadlatch, 001 Touch Plus, Smart Deadlatch, Deadlatch