



## LOCKTON ELEV64 WI-FI BRIDGE – G2 Gateway Instructions

[Home](#) » [LOCKTON](#) » LOCKTON ELEV64 WI-FI BRIDGE – G2 Gateway Instructions

### LOCKTON ELEV64 WI-FI BRIDGE – G2 Gateway Instructions



#### Contents [ [hide](#) ]

- [1 Optional gateway set up – For Remote WiFi Controlling](#)
- [2 GATEWAY G2](#)
- [3 Light Status](#)
- [4 Instruction](#)
- [5 Documents / Resources](#)
- [6 Related Posts](#)

### Optional gateway set up – For Remote WiFi Controlling

The ELEV64 in it's primary condition is controlled by Bluetooth requiring the user to be within proximity of the bound locks to Change Passcodes, Add Fingerprints , Review audit trails & Create Temporary Passkeys etc. To Manage these lock functions remotely anywhere, the Art. Id: G2- GATE can be purchased separately.



## GATEWAY G2

**Model :** G2

**Dimensions :** 70mm x 70mm x 26mm

**Network :** Wi-Fi 2.4G

**IEEE standard :** 802.11 b/g/n

**Power interface :** Type-C USB

**Power input :** 5V/500mA

## Light Status



When the Gateway is powered on:



Flashing Red/Blue lights:

Stand-by mode - Ready to Pair



Blue light: Normal mode



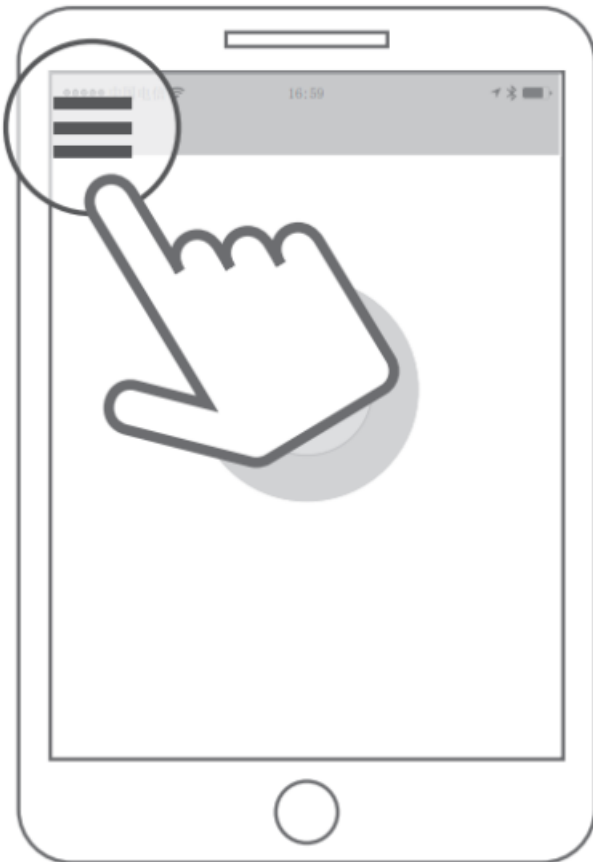
Red light: Network failure

## Instruction

1. Open the APP



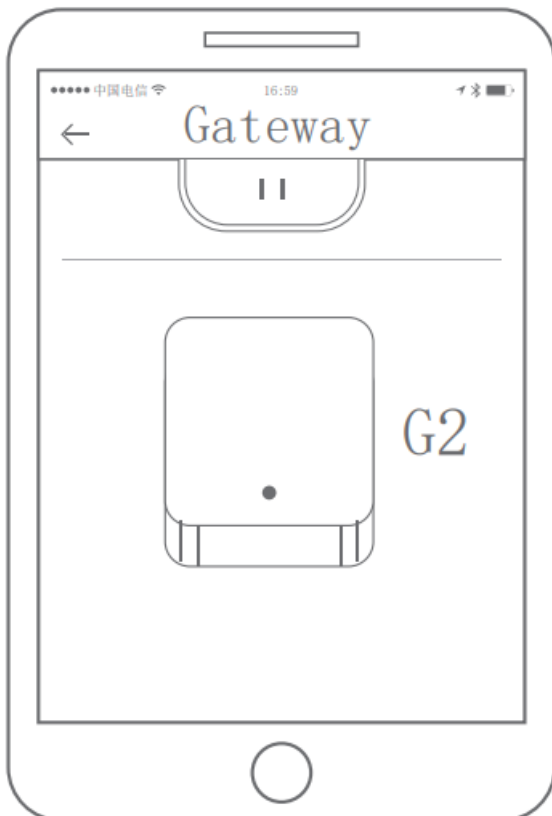
2. Touch the “ ” icon on the top left of the screen



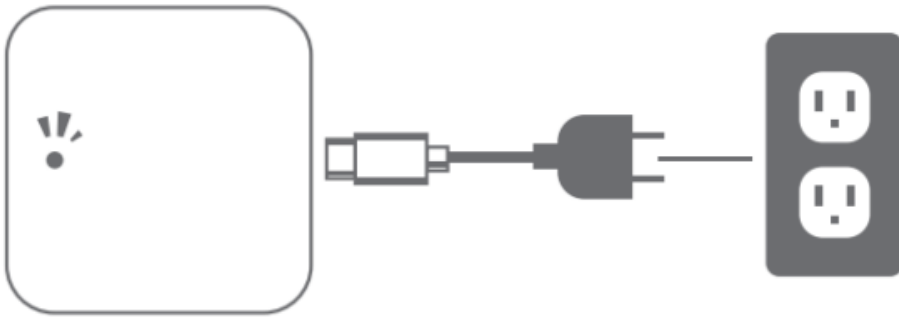
3. Select [Gateway]



4. Select G2



5. Plug in the Gateway and power it on



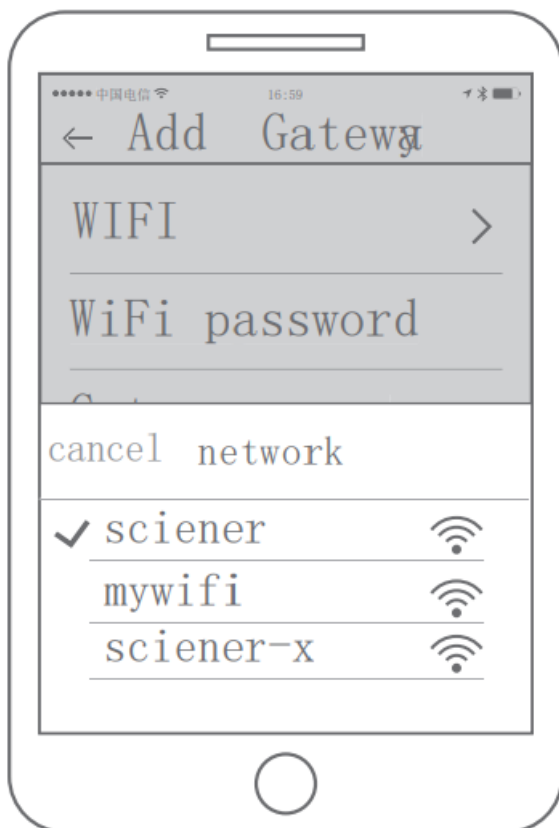
6. While the light is flashing in red and blue, press "+" sign

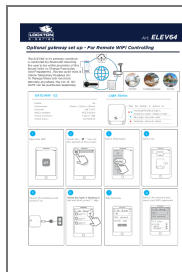


7. Add Gateway



8. Select the network and input your Wi-Fi password





## [LOCKTON ELEV64 WI-FI BRIDGE - G2 Gateway](#) [pdf] Instructions

### ELEV64 WI-FI BRIDGE - G2 Gateway