

# Locks D2 Basic Version Lock Instruction Manual

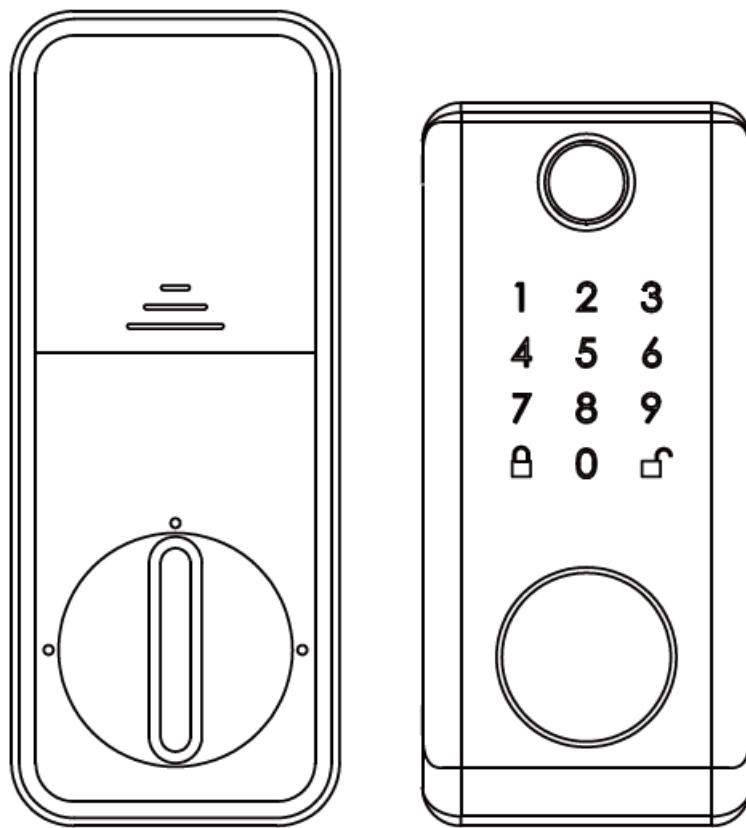
[Home](#) » [Locks](#) » Locks D2 Basic Version Lock Instruction Manual 

## Contents

- [1 Locks D2 Basic Version Lock](#)
- [2 What in the box](#)
- [3 Overview](#)
- [4 Install the latch and strike](#)
- [5 Install the interior assembly](#)
- [6 Install the exterior assembly](#)
- [7 APP USING](#)
- [8 TEMPLATE](#)
- [9 FCC STATEMENT](#)
- [10 Documents / Resources](#)
- [11 Related Posts](#)

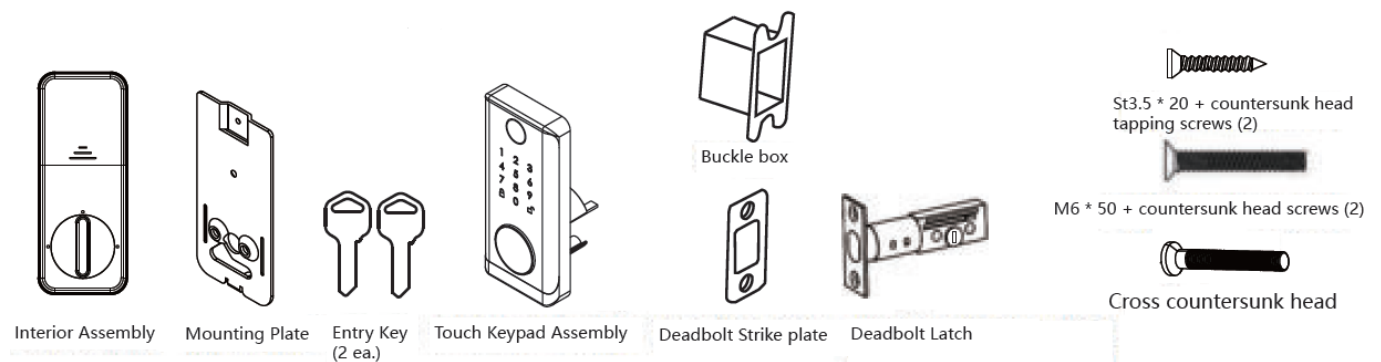
# LOCKS

**Locks D2 Basic Version Lock**

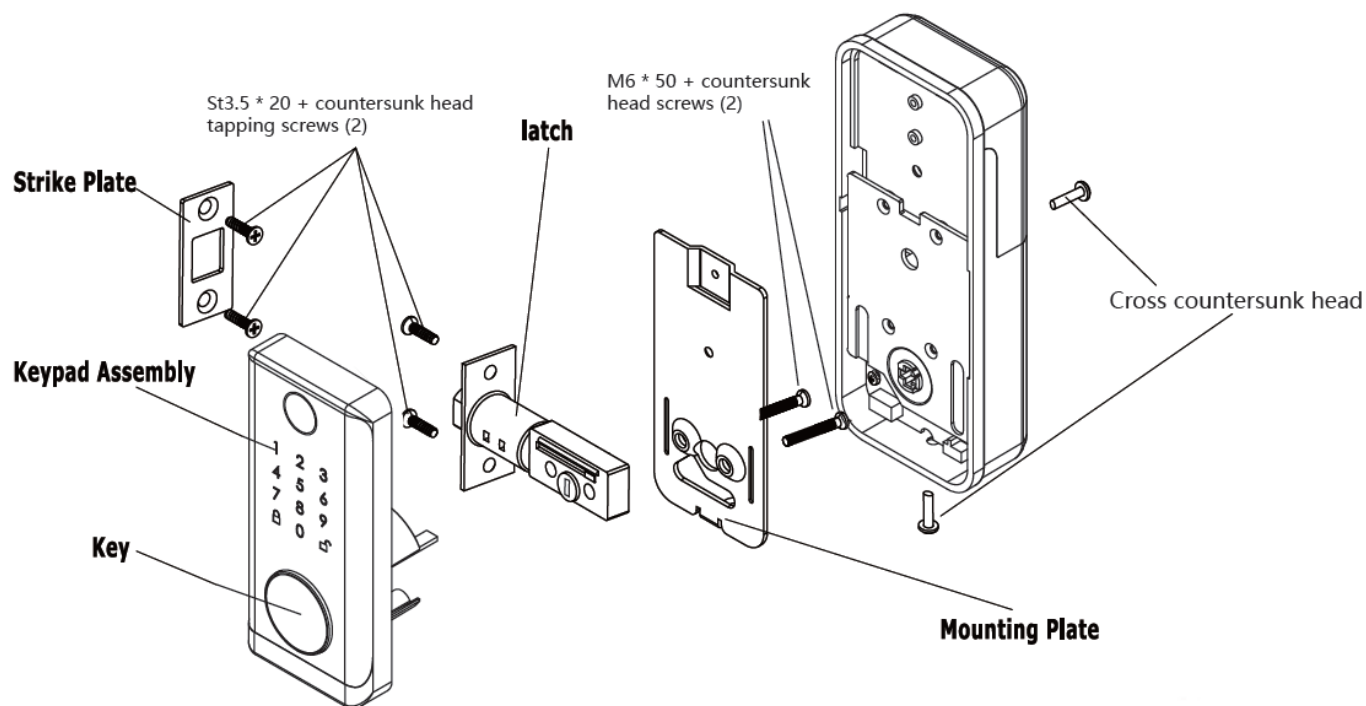


**MODEL:** D2 SMALL SCREEN + FINGERPRINT HEAD

## What in the box



## Overview



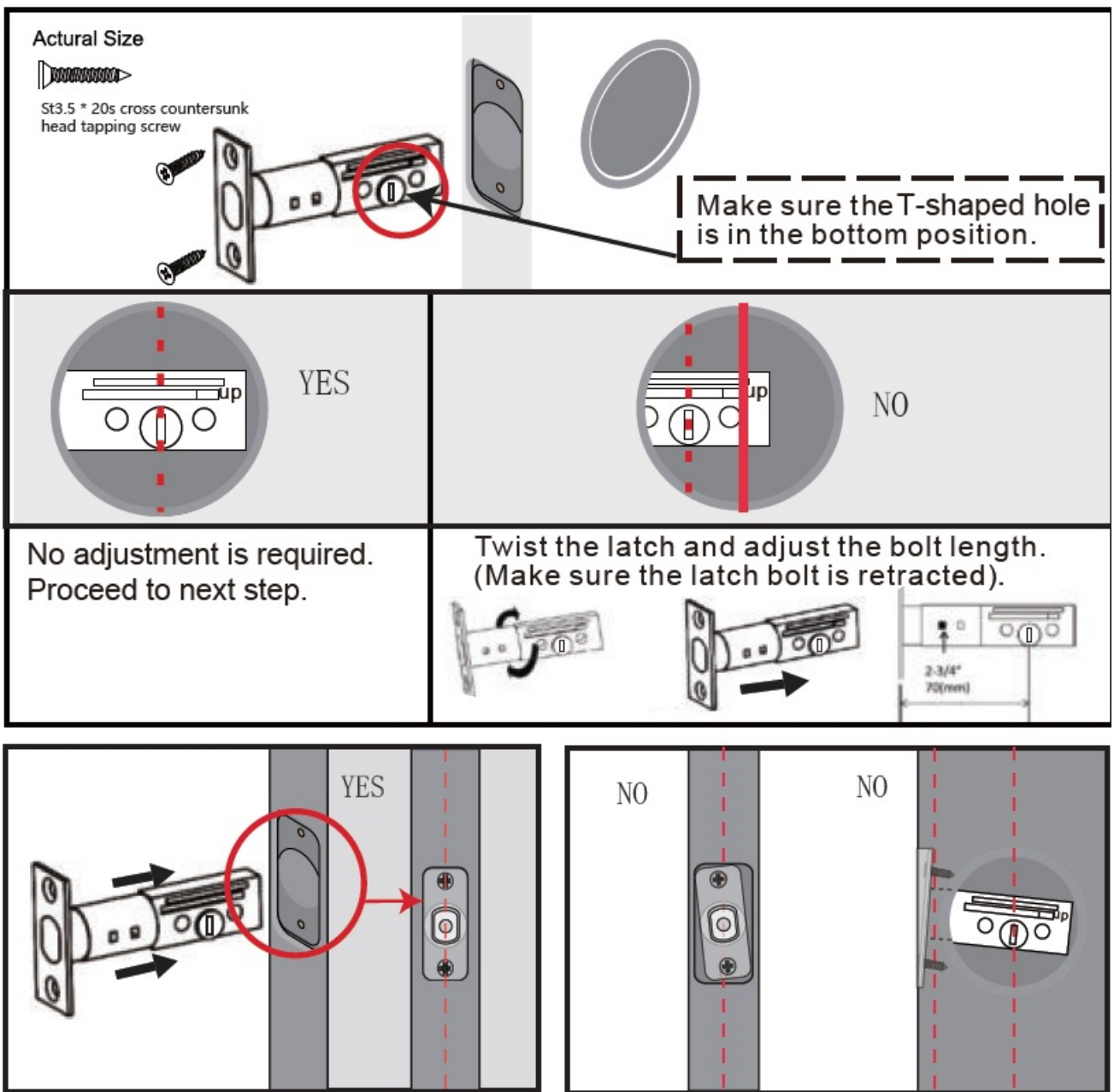
## Tools Required

Tools Required for Installation on Pre-drilled Doors

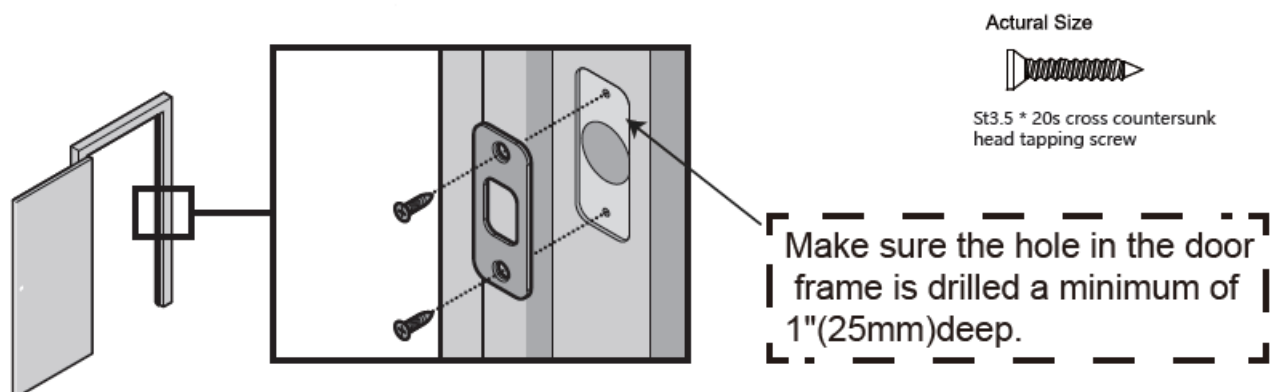
- Phillips Screwdriver (DO NOT USE POWER DRILL!)

## Install the latch and strike

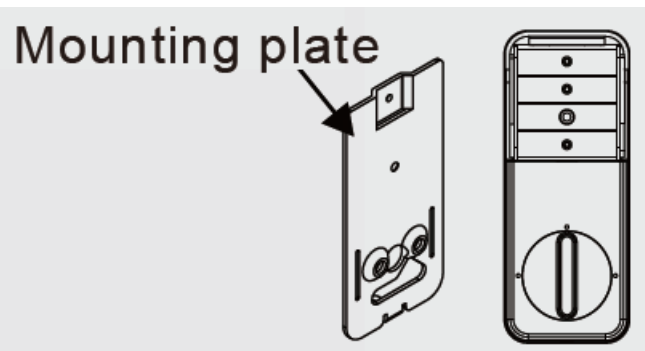
1. Insert the latch bolt into the door.



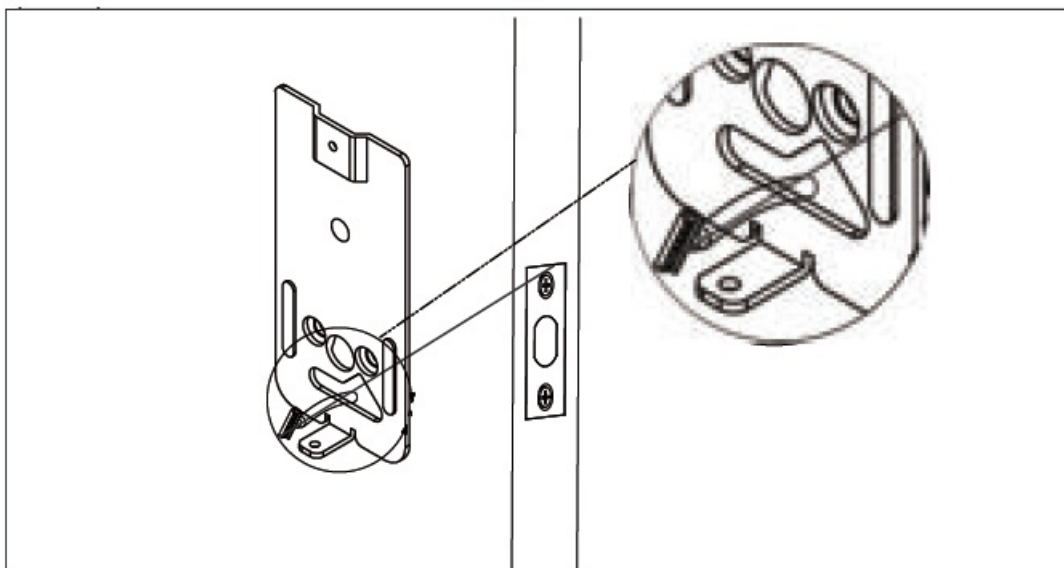
2. Install strike on the door frame.



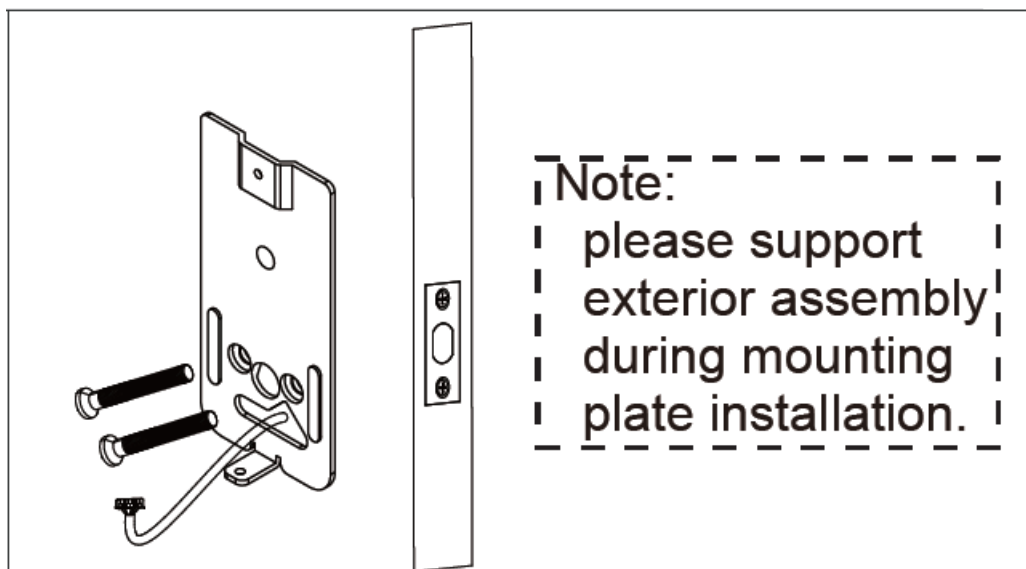
**Install the interior assembly**



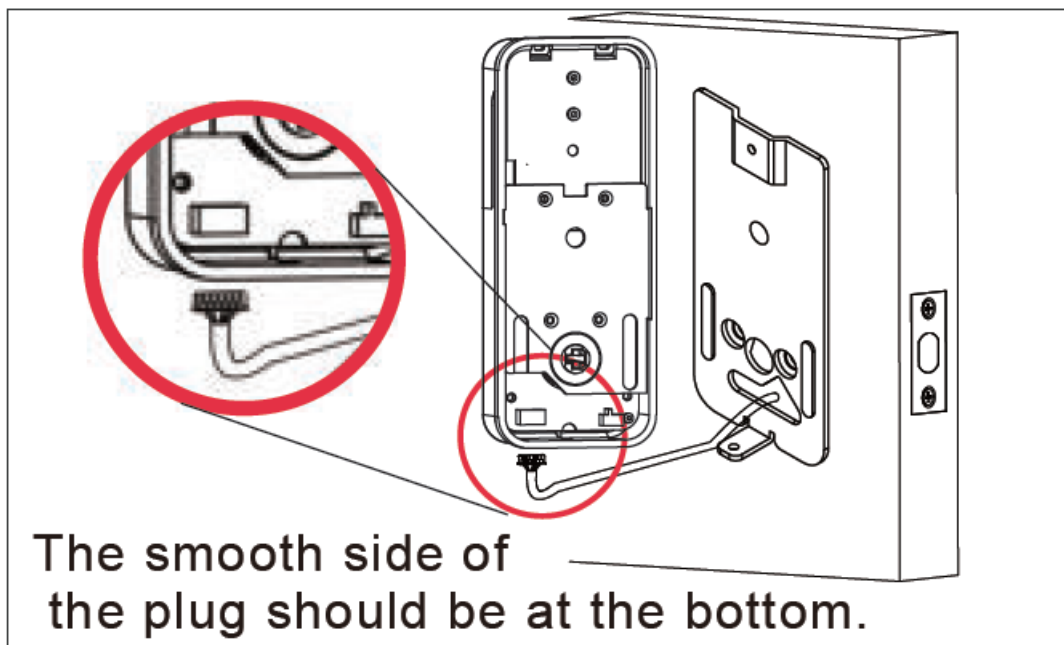
1. Take off the mounting plate.



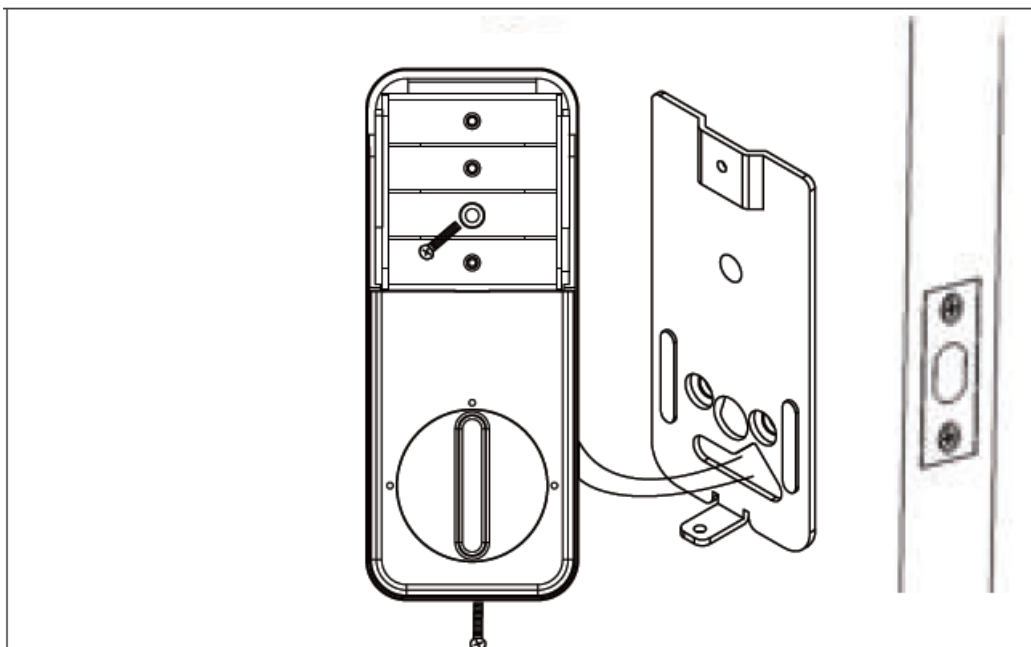
2. Route cable through the bottom of mounting plate.



3. Tighten screws evenly.

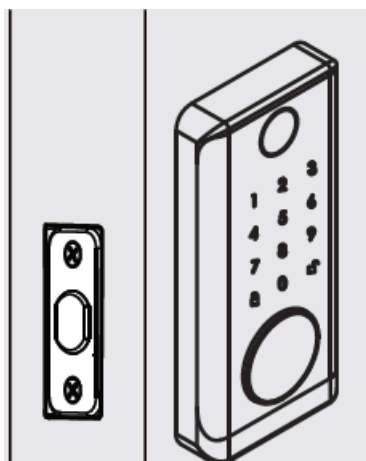


4. Ensure tight cable connection.

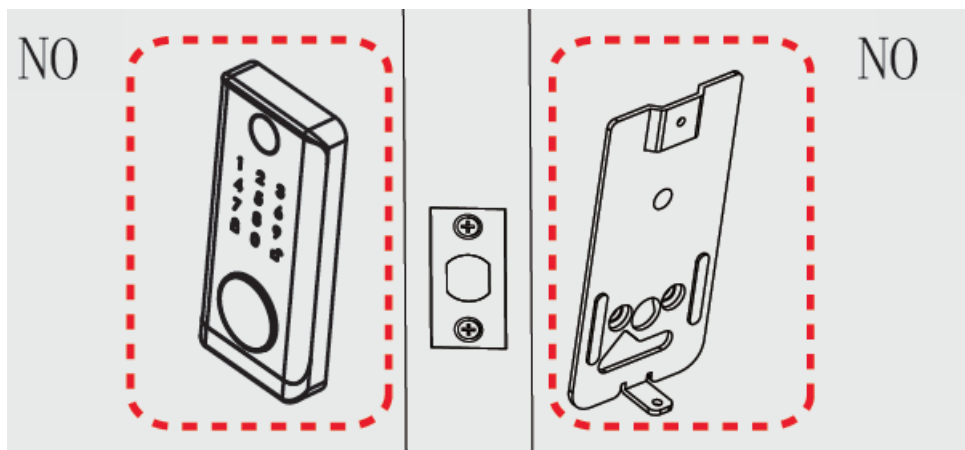


5. Tighten screws evenly.

- Insert key and test latch.

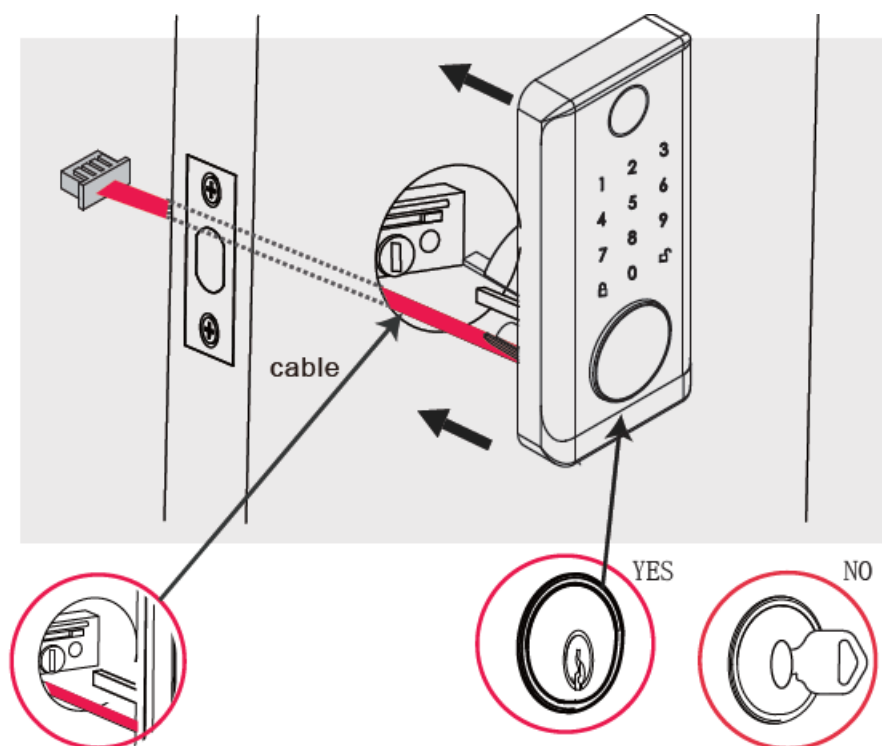


- if latch does not extend or retract smoothly.
- please adjust mounting plate screws.



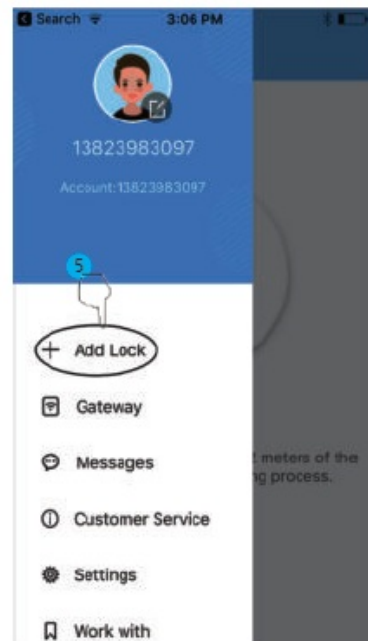
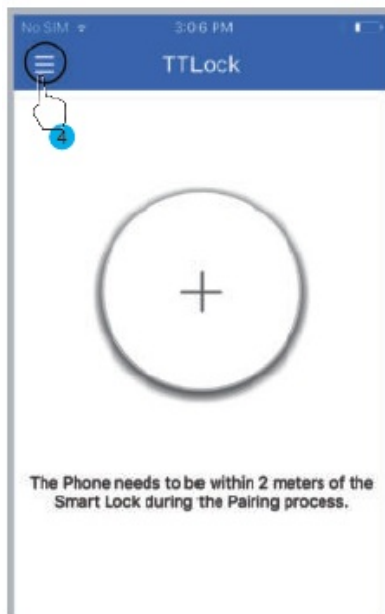
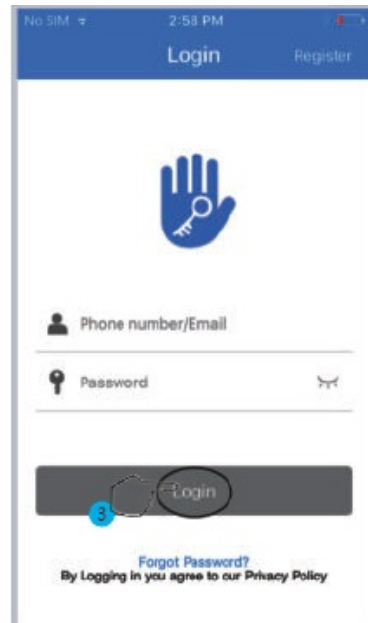
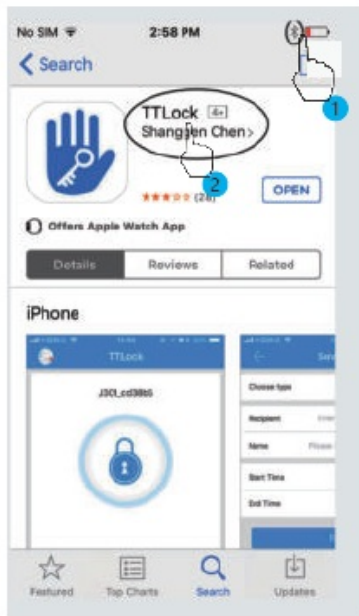
- If the keypad and mounting plate are deflection.
- please loose mounting plate screws and adjust.

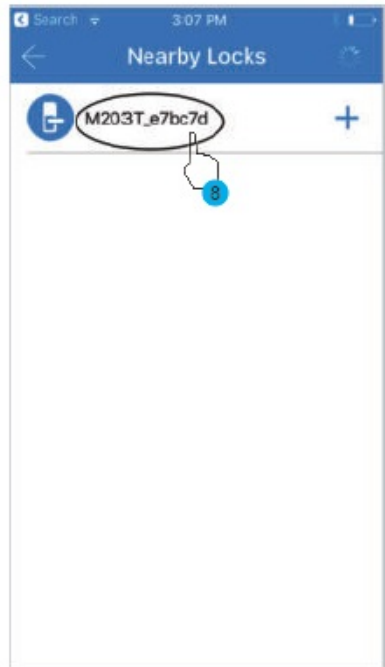
### Install the exterior assembly

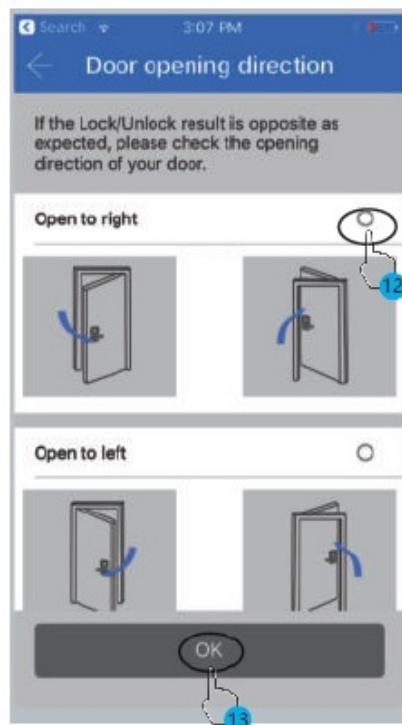
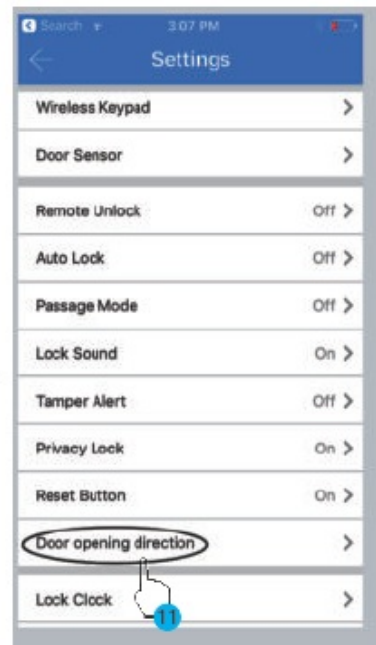
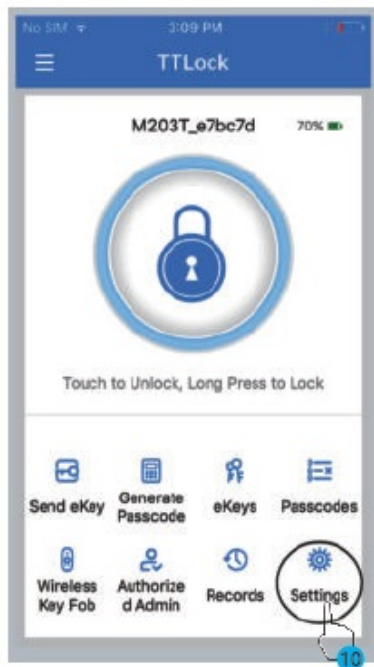


- Route the cable through the door below the bolt.and push the keypad onto the door.
- The key must be pulled out when installing.

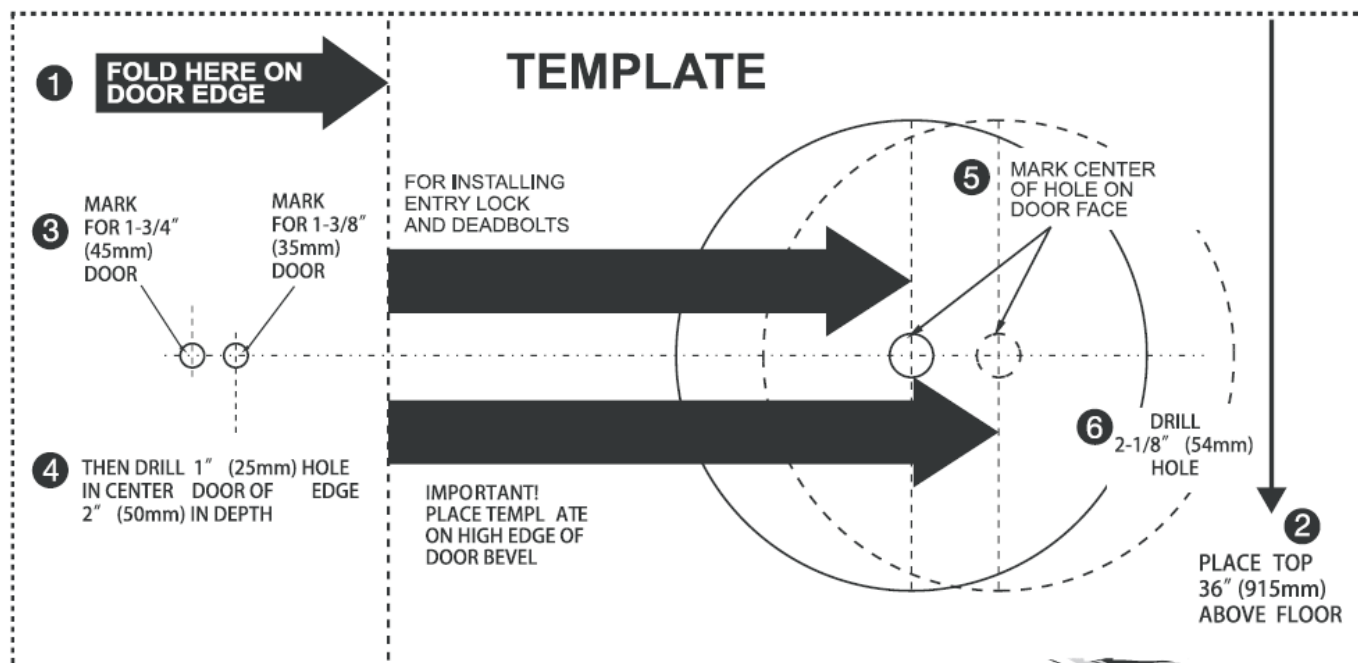
### APP USING







TEMPLATE



## FCC STATEMENT

This device complies with part 15 of the FCC Rules. Operation is subject to the following two conditions

1. this device may not cause harmful interference.
2. this device must accept any interference received, including interference that may cause undesired operation.

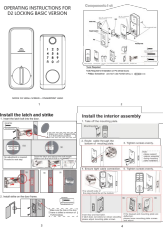
Any changes or modifications not expressly approved by the party responsible for compliance could void the user's authority to operate the equipment.

**NOTE:** This equipment has been tested and found to comply with the limits for a Class B digital device, pursuant to Part 15 of the FCC Rules. These limits are designed to provide reasonable protection against harmful interference in a residential installation. This equipment generates, uses and can radiate radio frequency energy and, if not installed and used in accordance with the instructions, may cause harmful interference to radio communications. However, there is no guarantee that interference will not occur in a particular installation. If this equipment does cause harmful interference to radio or television reception, which can be determined by turning the equipment off and on, the user is encouraged to try to correct the interference by one or more of the following measures:

- Reorient or relocate the receiving antenna.
- Increase the separation between the equipment and receiver.
- Connect the equipment into an outlet on a circuit different from that to which the receiver is connected.
- Consult the dealer or an experienced radio/TV technician for help.

To maintain compliance with FCC's RF Exposure guide lines, This equipment should be installed and operated with minimum distance between 20cm the radiator your body: Use only the supplied antenna.

## Documents / Resources



## [Locks D2 Basic Version Lock](#) [pdf] Instruction Manual

D2, 2A9XT-D2, 2A9XTD2, D2 Basic Version Lock, Basic Version Lock, Lock