



# LOCKMASTER LM173 Wireless Push Button User Manual

[Home](#) » [LOCKMASTER](#) » LOCKMASTER LM173 Wireless Push Button User Manual 

## **LockMaster**<sup>TM</sup> LM173 Wireless Push Button User Manual

Thank you for purchasing the wireless push button remote control (LM173). It can be mounted not only on walls in the room but also in the car or any other place for user convenience. Read the manual carefully and completely before you permanently mount the push button.

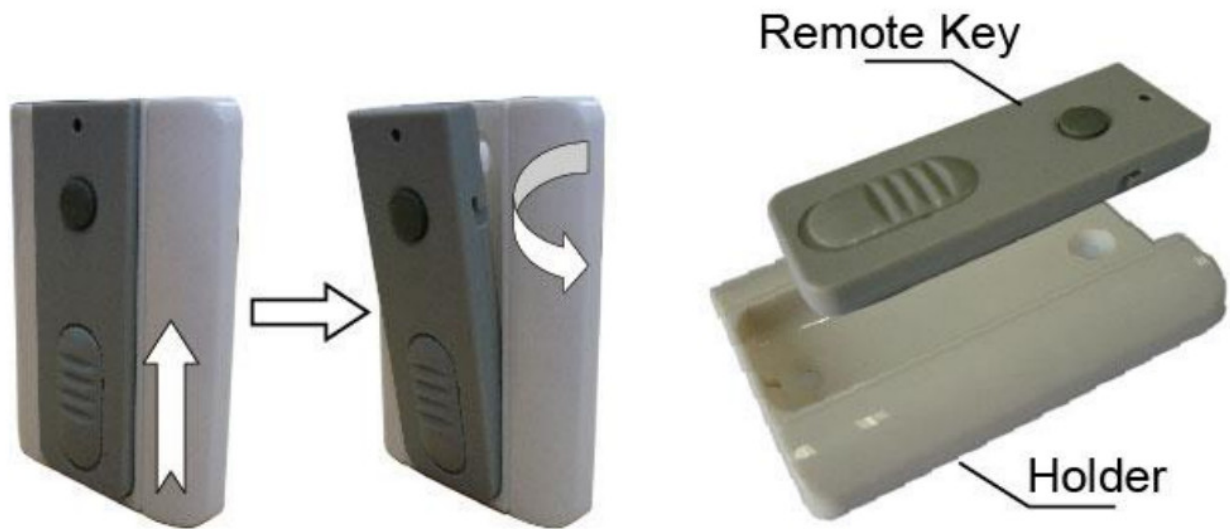
### Contents

- [1 Installation](#)
- [2 Program the push button to the control board](#)
- [3 Documents / Resources](#)
- [4 Related Posts](#)

## Installation

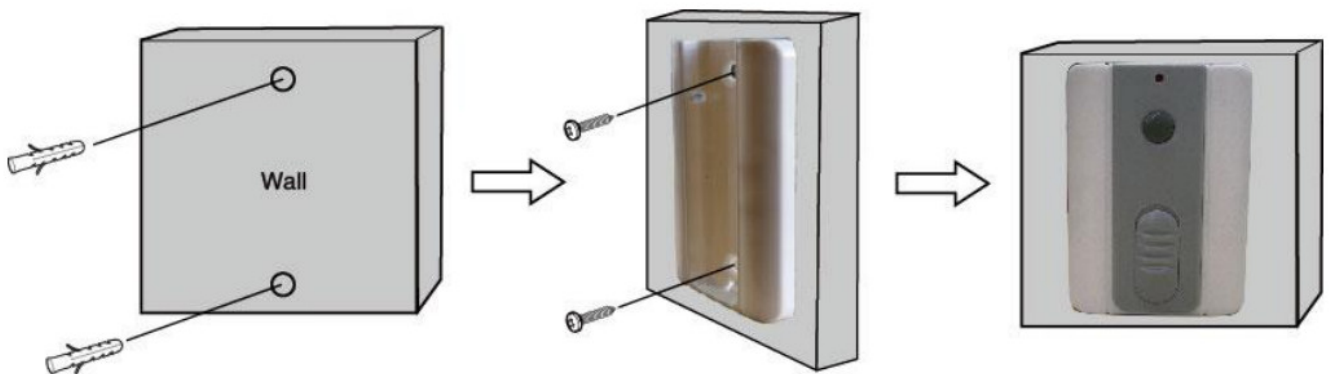
There are 2 parts of the push button, one is the remote key and another is the holder. You should take the remote key out before the installation.

You can detach the holder from the push-button according to Fig.1.

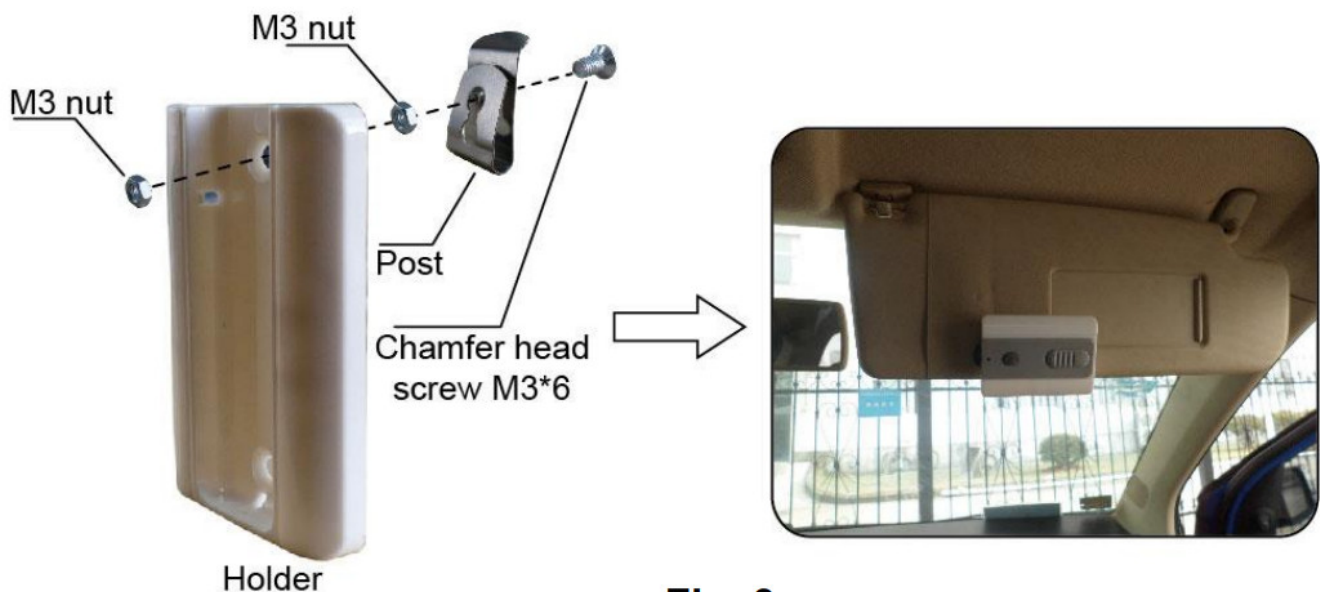


**Fig. 1**

There are 2 methods to install the push button according to your needs.  
One is permanently mounting to the wall (Fig.2) and another is installed to the post for portable use (Fig.3).



**Fig. 2**



**Fig. 3**

### Program the push button to the control board

Press and release the learn button on the control board, the LED will display “Ln” for LM902/LM901 (REM LED

