



LOCKLY PGD798NVS Vision Elite Smart Lock Deadbolt with App Key Touchscreen User Guide

[Home](#) » [LOCKLY](#) » LOCKLY PGD798NVS Vision Elite Smart Lock Deadbolt with App Key Touchscreen User Guide 

Contents

- [1 LOCKLY PGD798NVS Vision Elite Smart Lock Deadbolt with App Key Touchscreen](#)
- [2 Product Information: Lockly Vision™ Elite](#)
- [3 Product Usage Instructions](#)
- [4 INSTRUCTION](#)
- [5 DOWNLOAD THE FREE LOCKLY APP](#)
- [6 FAQs](#)
- [7 INSTALLATION OVERVIEW AND PARTS LIST](#)
- [8 Parts List](#)
- [9 Documents / Resources](#)
 - [9.1 References](#)
- [10 Related Posts](#)



LOCKLY PGD798NVS Vision Elite Smart Lock Deadbolt with App Key Touchscreen



Product Information: Lockly VisionTM Elite

The Lockly VisionTM Elite is a smart lock that allows you to control and monitor your lock using the Lockly mobile app. This lock can be fitted for both right swing doors and left swing doors. The lock comes with a parts list that includes exterior assembly, plate, adhesive, battery cover, deadbolt, KA4*20MM screw, strike plate, dust box, strike spacer, Vision Connect LAN cable, plug, TF card, activation card, KM3x6mm screw, and pin key.

Product Usage Instructions

To install your Lockly VisionTM Elite, follow these step-by-step video instructions:

1. Scan the QR code provided in the manual to watch the installation video.
2. Download the free Lockly app from the app store on your mobile device.

If you need help with any of the following tasks, refer to the FAQs section in the manual:

- Adding a fingerprint
- Doing a factory reset
- Locking Lockly with the app
- Rekeying a Lockly smart lock
- What to do if the Initial Code is lost
- Pairing Lockly with the app
- Why the Connect Hub might not be working
- Differences between Lockly models

If you need further assistance, contact the Lockly Customer Care team at (669)500-8835 or visit lockly.com/help.

INSTRUCTION

FOLLOW THESE STEP-BY-STEP VIDEO INSTRUCTIONS TO INSTALL YOUR LOCKLY VISION™ ELITE



HOW TO INSTALL



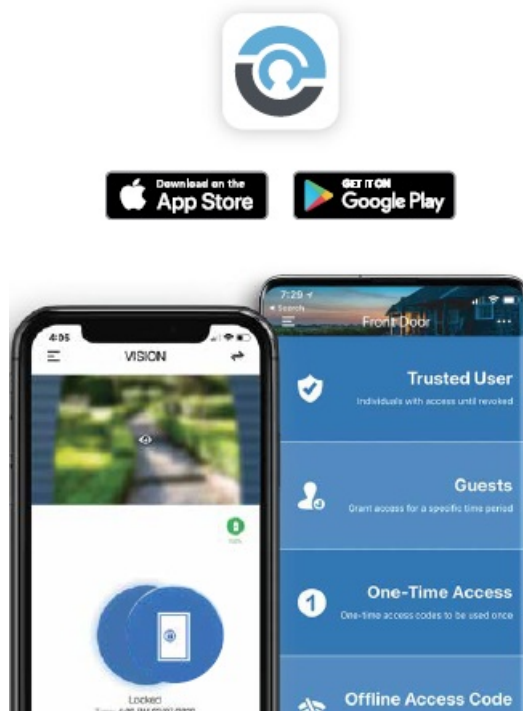
FEWER FRUSTRATIONS. FINISH FASTER.



Scan to watch step-by-step video installation

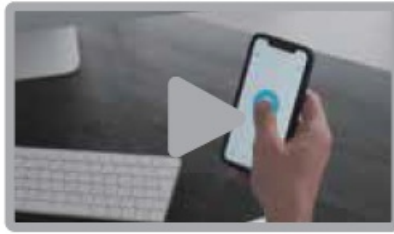
DOWNLOAD THE FREE LOCKLY APP

The Lockly mobile app allows you to control and monitor all of your Lockly smart locks.



FAQs

- How to add a Fingerprint?
- How to do a factory reset?
- Locking Lockly with APP?
- How to rekey a Lockly smart lock?
- What to do if the Initial Code is lost?
- How to Pair Lockly with the APP?
- Why is my Connect Hub not working?
- What's the difference between the models?

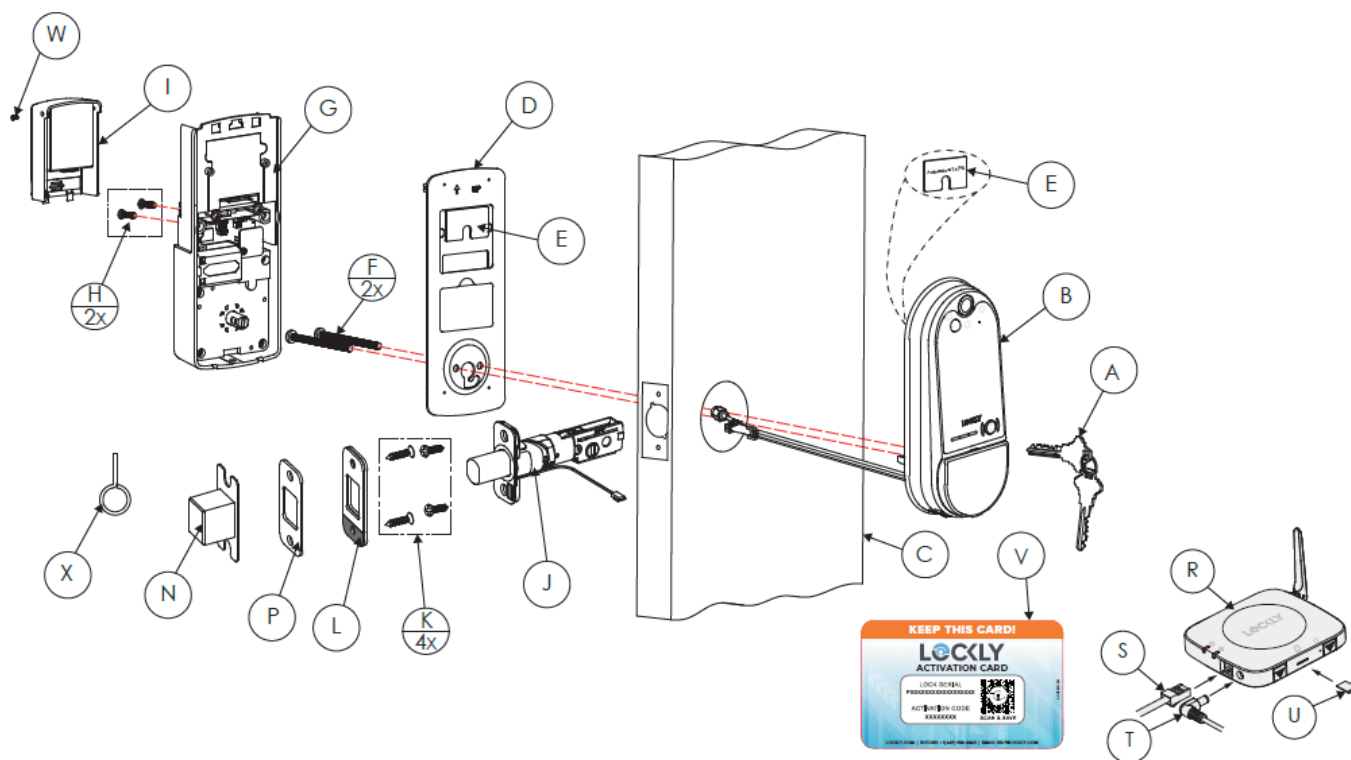


WE'RE HERE TO HELP

Need Help?

Our Customer Care team is here to assist you. Phone: (669)500-8835 or [Lockly.com/help](https://lockly.com/help)

INSTALLATION OVERVIEW AND PARTS LIST



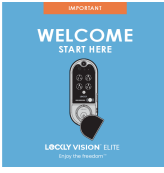
Parts List

Labeled As: Description

- A Keys
- B Exterior Assembly
- C Exterior
- D Mounting Plate
- E Adhesive
- F PM5×60mm Screw
- G Interior Assembly
- H PM4*12MM Screw
- I Battery Cover
- J Deadbolt
- K KA4*20MM Screw
- L Strike Plate
- P Strike Spacer
- N Dust Box
- R Vision Connect
- S LAN Cable
- T Power Plug
- U TF Card
- V Activation Card
- W KM3x6mm Screw
- X Pin Key

Lockly Vision™ Elite can be fitted for both right swing doors and left swing doors.

Documents / Resources

 The image shows the cover of a user guide for the Lockly Vision Elite smart lock. It features a blue background with a white 'WELCOME START HERE' banner at the top. Below the banner is a black and white image of the smart lock. At the bottom, it says 'LOCKLY VISION ELITE' and 'App Key Touchscreen'.	<p>LOCKLY PGD798NVSN Vision Elite Smart Lock Deadbolt with App Key Touchscreen [pdf]</p> <p>User Guide</p> <p>PGD798NVSN Vision Elite Smart Lock Deadbolt with App Key Touchscreen, PGD798NVSN, Vision Elite Smart Lock Deadbolt with App Key Touchscreen, App Key Touchscreen, Key Touchscreen, Touchscreen</p>
---	--

References

- [🔗 Fingerprint, Smartphone-Control Smart Locks | Lockly®](#)
- [🔗 Product Registration - Lockly Support Desk](#)

Manuals+.