

**LOCKLY®
PGA387**

**Wireless
Exit
Button**



LOCKLY PGA387 Wireless Exit Button Owner's Manual

[Home](#) » [LOCKLY](#) » LOCKLY PGA387 Wireless Exit Button Owner's Manual 

Contents

- [1 LOCKLY PGA387 Wireless Exit Button](#)
- [2 Product Usage Instructions](#)
- [3 FAQ](#)
- [4 Usage Instructions](#)
- [5 FCC Warning](#)
- [6 Documents / Resources](#)
 - [6.1 References](#)
- [7 Related Posts](#)



LOCKLY PGA387 Wireless Exit Button



Specifications

- **Frequency Range:** RF433.97MHz~443.97MHz
- **Encryption:** Lockly 2.0 proprietary encryption

- **Battery:** 1 x AAA alkaline battery (lasts up to 12 months)
- **Installation:** Quick and easy, mountable anywhere

Product Usage Instructions

1. Press the buckle button to remove the backplate cover.
2. Insert 1 x AAA alkaline battery (included) with attention to +/- polarity.
3. Remove the protective film adhesive from the backplate and mount it in the desired location (near the exit door). Secure with screws if needed.

Important Notes

- Avoid using expired batteries as it may cause product malfunctions.
- Follow FCC guidelines for installation and operation to prevent interference.
- Maintain a minimum distance of 20cm between the device and your body for FCC radiation compliance.

FAQ

Q: How long does the battery last?

A: The device operates with 1 x AAA alkaline battery which can last up to 12 months under normal usage.

Q: Can I use rechargeable batteries with this product?

A: It is recommended to use a standard AAA alkaline battery for optimal performance. Rechargeable batteries may not provide the same longevity.

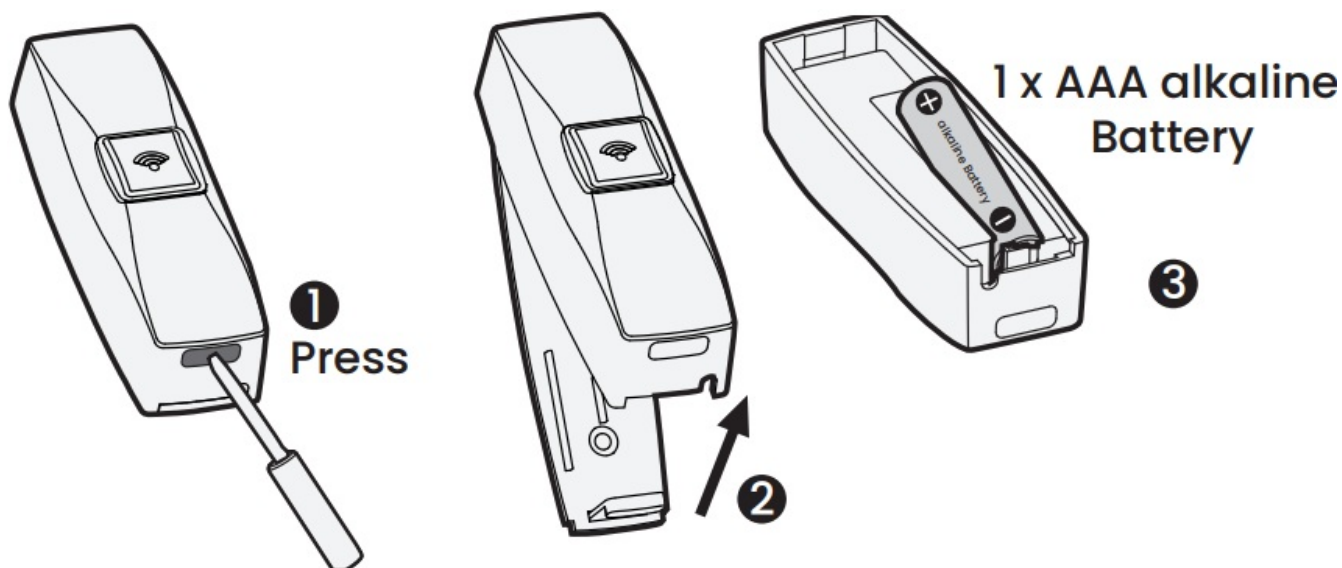
Q: Is the product waterproof for outdoor use?

A: The device is not waterproof, so it is advised to install it in a sheltered area if using it outdoors.

Usage Instructions

- Lockly Guard Wireless Exit Button is based on bidirectional RF433.97MHz~ 443.97MHz and Lockly 2.0 proprietary encryption, providing communication reliability, stability, and better security.
- It operates with a 1 x AAA alkaline battery which lasts up to 12 months. A Wireless Transceiver is required to connect this product.
- It is quick and very easy to install and can be mounted anywhere. When using it for the first time, please refer to the following steps to install and pair.

1. Press the buckle button to remove the backplate cover.

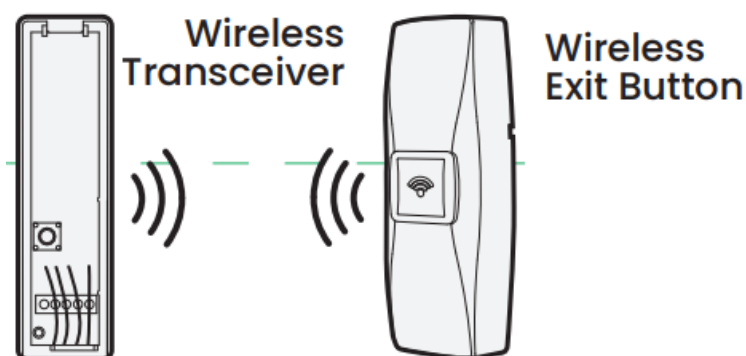


2. Insert 1 x AAA alkaline battery (included). Pay attention to the +/- polarity.

- Please do not use expired batteries, otherwise it will cause the product function to fail.

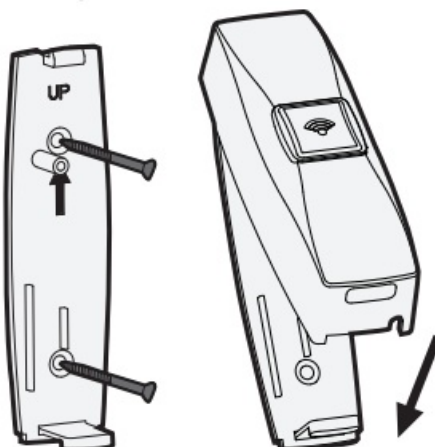
3. You need to pair the Wireless Exit Button with the Wireless Transceiver to work properly. Within three minutes after installing the battery, press the button from the wireless exit device to pair to the Wireless Transceiver.

- (Refer to the wireless transceiver manual on how to enter pairing mode.) The device will attempt pairing within 3 minutes after pressing the button or it will exit the pairing mode if pairing is unsuccessful.
- If you want to restart pairing, please take out and reinsert the battery, then short-press the exit button again. Ensure pairing is successful before mounting on your desired location. You can add up to 10 Wireless Exit Button.



4. Remove the protective film adhesive from the backplate and mount it in the desired location (near the exit door).

- You can also use screws to secure the backplate.



This device complies with Part 15 of the FCC Rules. Operation is subject to the following two conditions:

1. This device may not cause harmful interference,
2. this device must accept any interference received, including interference that may cause undesired operation.

NOTE: Any changes or modifications to this unit not expressly approved by the party responsible for compliance could void the user's authority to operate the equipment. This equipment has been tested and found to comply with the limits for a Class B digital device, under part 15 of the FCC Rules. These limits are designed to provide reasonable protection against harmful interference in a residential installation. This equipment generates, uses, and can radiate radio frequency energy and, if not installed and used under the instructions, may cause harmful interference to radio communications. However, there is no guarantee that interference will not occur in a particular installation. If this equipment does cause harmful interference to radio or television reception, which can be determined by turning the equipment off and on, the user is encouraged to try to correct the interference by one or more of the following measures:

- Reorient or relocate the receiving antenna.
- Increase the separation between the equipment and the receiver.
- Connect the equipment to an outlet on a circuit different from that to which the receiver is connected.
- Consult the dealer or an experienced radio/TV technician for help.

FCC Radiation Exposure Statement

Lockly Guard Wireless Exit Button complies with FCC radiation exposure limits set forth for an uncontrolled environment. It should be installed and operated with a minimum distance of 20cm between the radiator & your body.


IC WARNING

This device contains license-exempt transmitter(s) that comply with Innovation

IC Radiation Exposure Statement

- This equipment meets the exemption from the routine evaluation limits in section 2.5 of RSS-102. It should be installed and operated with a minimum distance of 20cm between the radiator and any part of your body.
- **WARNING:** This product can expose you to chemicals including Lead, which is known to the State of California to cause cancer. For more information go to www.P65Warnings.ca.gov.

Documents / Resources

	<p>LOCKLY PGA387 Wireless Exit Button [pdf] Owner's Manual PGA387 Wireless Exit Button, PGA387, Wireless Exit Button, Exit Button, Button</p>
---	---

References

- [!\[\]\(83eb2aa26b610eb6a9dca7cf4702d681_img.jpg\) LocklyPRO](#)
- [!\[\]\(94dfacbf937cdd7da4837a6fcd8fc785_img.jpg\) P65Warnings.ca.gov](#)
- [User Manual](#)

[Manuals+](#), [Privacy Policy](#)

This website is an independent publication and is neither affiliated with nor endorsed by any of the trademark owners. The "Bluetooth®" word mark and logos are registered trademarks owned by Bluetooth SIG, Inc. The "Wi-Fi®" word mark and logos are registered trademarks owned by the Wi-Fi Alliance. Any use of these marks on this website does not imply any affiliation with or endorsement.