

LOCKLY
728WZ Wave
Edition Smart
Lock Keypad



LOCKLY 728WZ Wave Edition Smart Lock Keypad Installation Guide

[Home](#) » [LOCKLY](#) » LOCKLY 728WZ Wave Edition Smart Lock Keypad Installation Guide 

Contents

- 1 LOCKLY 728WZ Wave Edition Smart Lock Keypad
- 2 Preparation
- 3 Step 1
- 4 Step 2
- 5 Step 3
- 6 Step 4
- 7 Step 5
- 8 Add more Smart to your Home
- 9 FCC Warning
- 10 INSTALLATION OVERVIEW AND PARTS LIST
- 11 Documents / Resources
 - 11.1 References



LOCKLY 728WZ Wave Edition Smart Lock Keypad

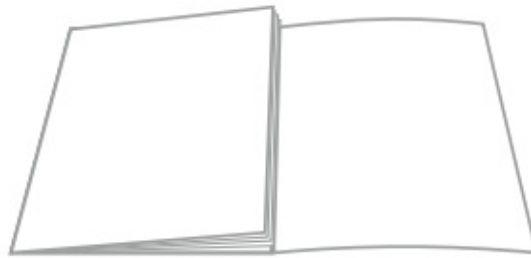


IMPORTANT NOTES

- Lockly Guard installs differently from other door locks. Professional installer(s) and locksmiths must read and follow Lockly Guard installation and user manuals to prevent damaging the product.
- Failure to do so may also result in the smart lock not responding correctly to the lock and unlocking commands and will require re-installation.
- This product is recommended for residential use. Please check your office building or property management policies and regulations before installation.
- DO NOT RETURN to the stores. Please call our customer care team: at [855-562-5599](tel:855-562-5599) to help you with any issues or concerns you might have.

Welcome!

This guide will walk you through step-by-step how to install and get your Lockly Guard™ up and running. Installation generally takes less than 30 minutes. If you have any questions please reference our online support at: LocklyPRO.com/support or call [669-500-8835](tel:669-500-8835) for help.

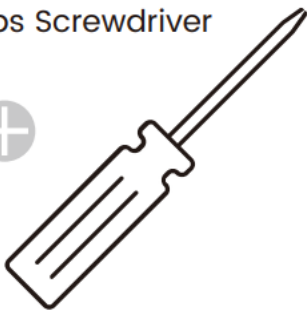


Reference installation parts overview foldout on the back page.

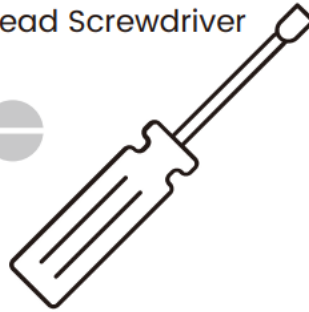
Preparation

To complete installation, you would need the following:

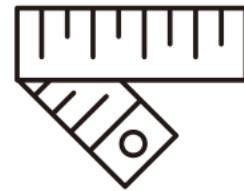
Phillips Screwdriver



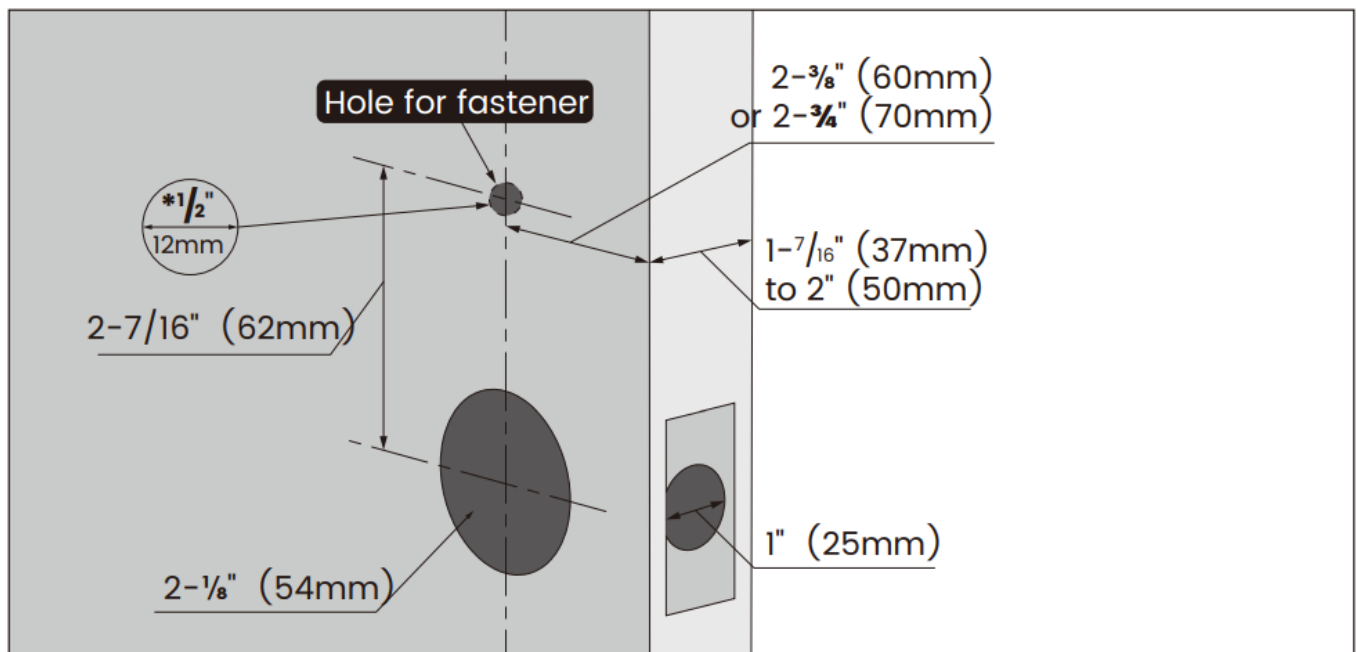
Flathead Screwdriver



Tape measure or ruler

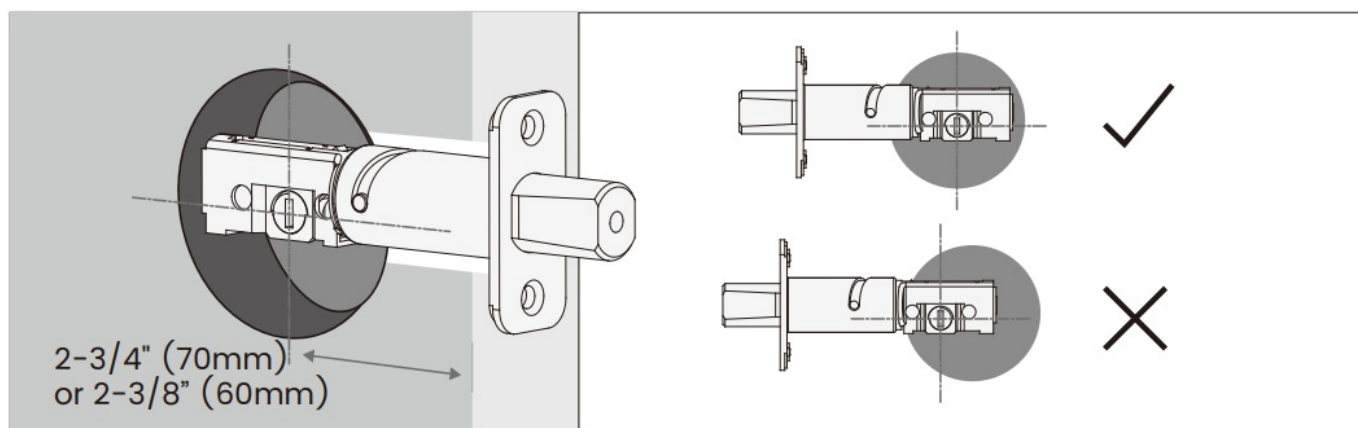


Prepare door: remove the existing deadbolt or use the provided template to bore new holes.

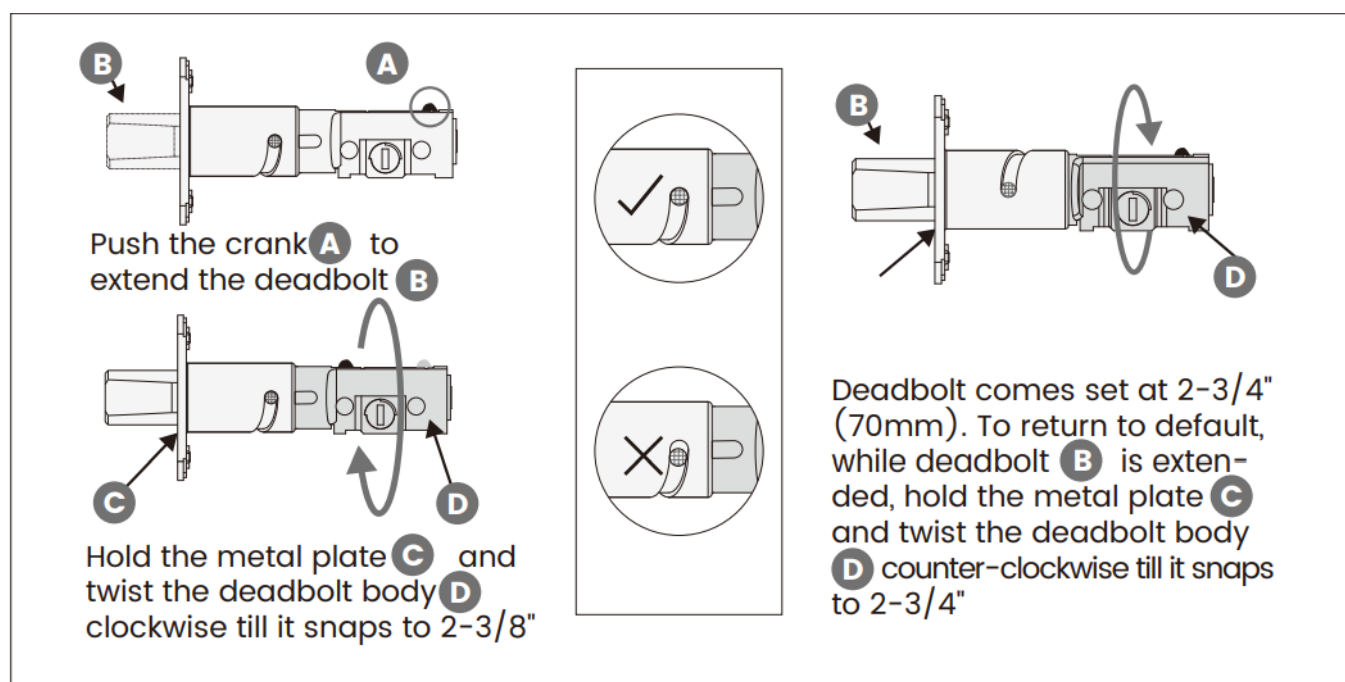


Step 1

The deadbolt slot must align to the center of the door hole. Adjust as shown if needed.

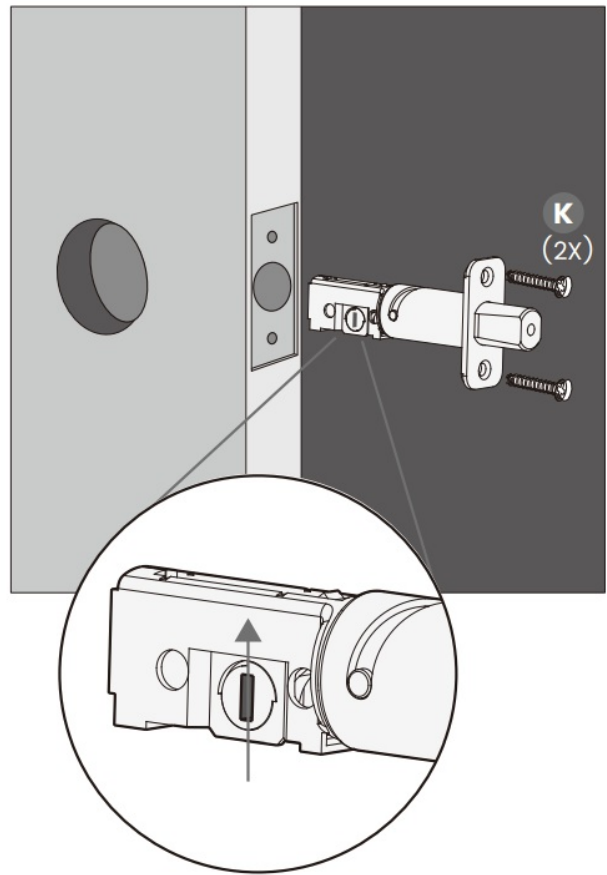
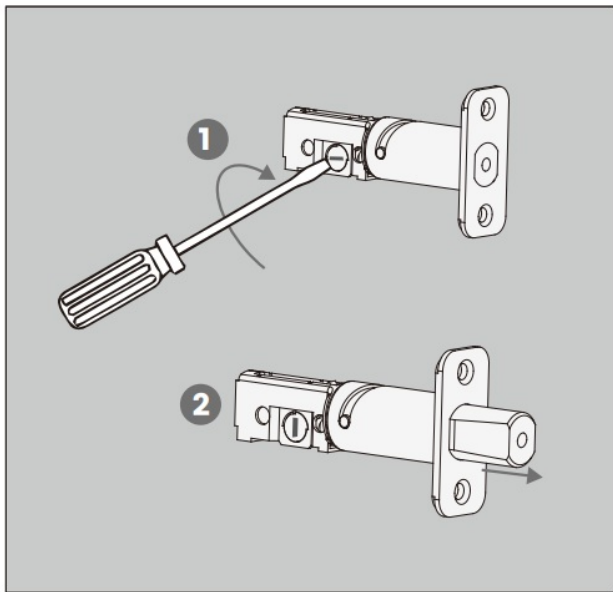


The deadbolt comes set to 2-3/4" (70mm). Adjust the length to 2-3/8" (60mm) if necessary. (wear gloves to protect from possible pinching).

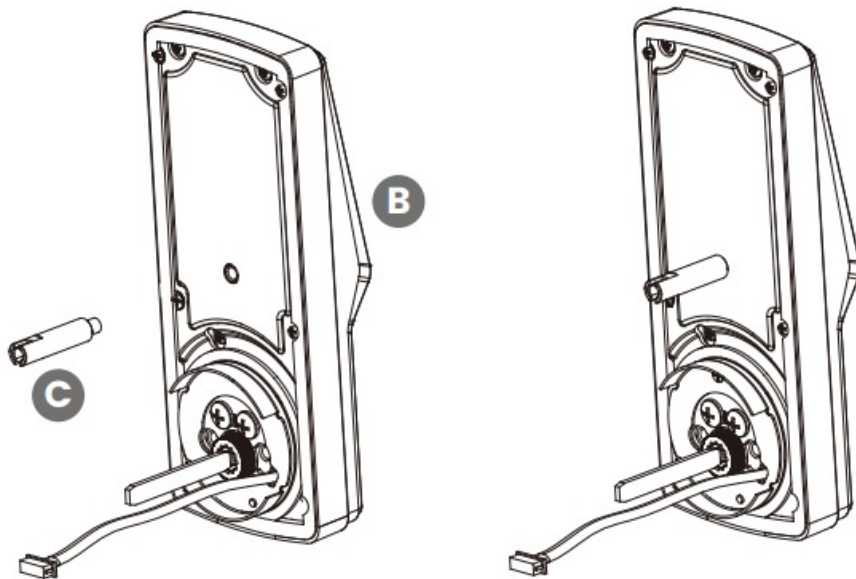


Step 1 continued

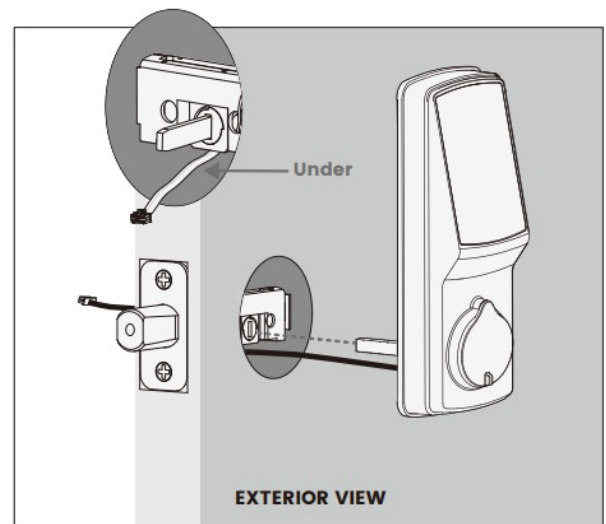
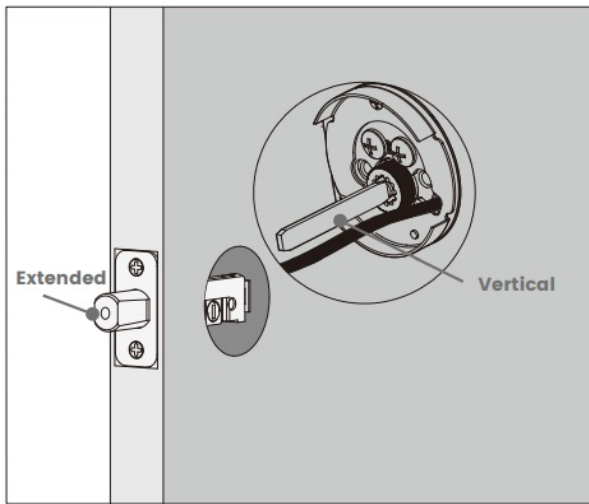
Extend the deadbolt by inserting a flat-head screwdriver into the slot and turning clockwise. Insert the deadbolt into the door edge hole, and make sure that the right side is up and the slot is in the vertical position. Secure with 2 screws.



Step 2

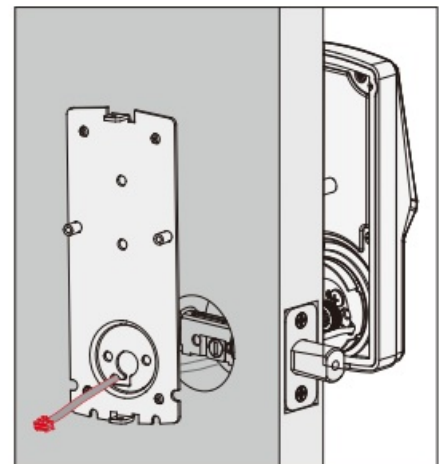
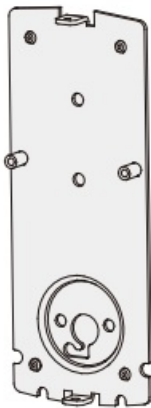


Using a flat-head screwdriver, insert a fastener screw bolt into the hole at the back of the exterior assembly. Turn clockwise to tighten the screw bolt. Make sure the torque blade is in the vertical position with the deadbolt extended. Place the assembly and torque blade through the deadbolt slot and guide connection cables through the cross-bore hole under the deadbolt as shown. Complete mounting by aligning and securing until flush with the exterior door surface.





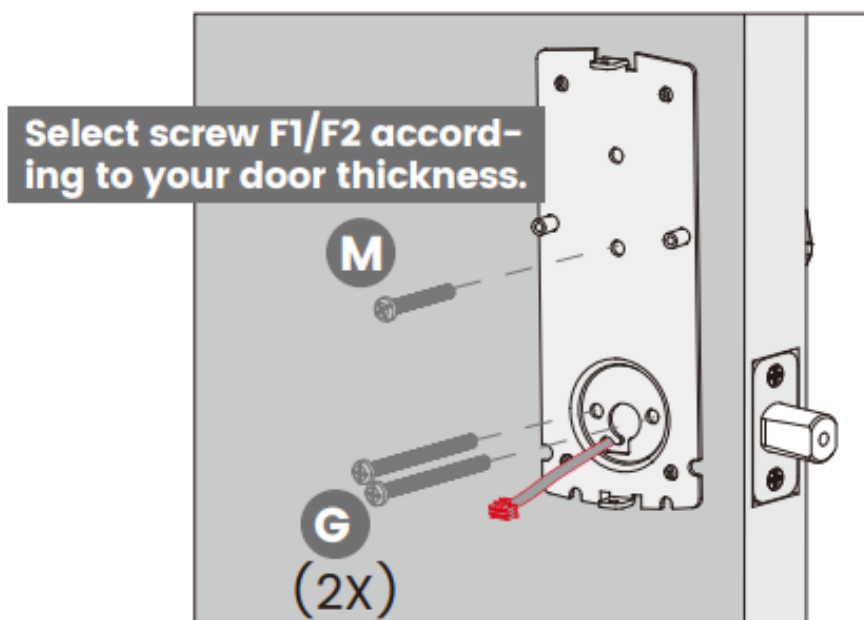
Step 3

1. Check the interior mounting plate alignment to your door hole before securing it with adhesive strips.

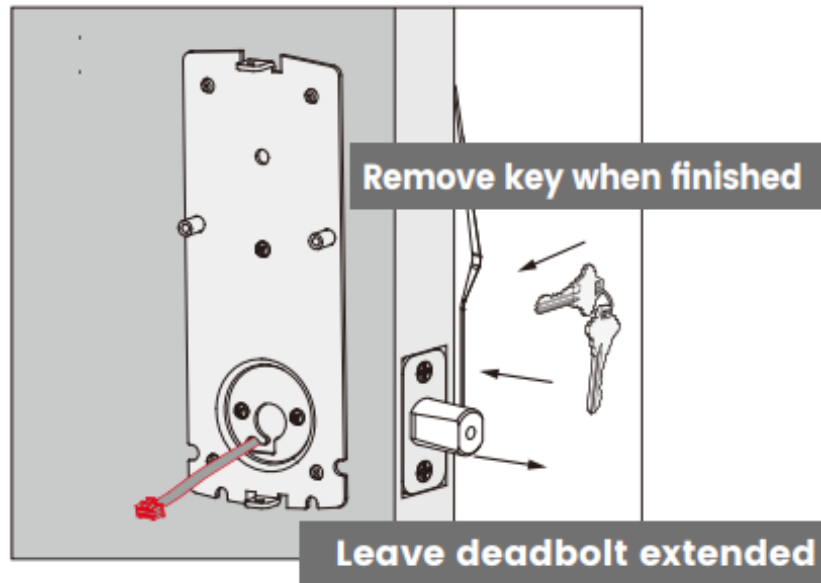


2. Align and secure the mounting plate with adhesive strips. Guide connection cables through the hole and secure to the lower left notched hole.

F1  PM4 x 25mm Screw, for door thickness, 1-7/16"~1-2/3" (37~43mm)
 F2  PM4 x 35mm Screw, for door thickness, 1-2/3"~2" (43~50mm)



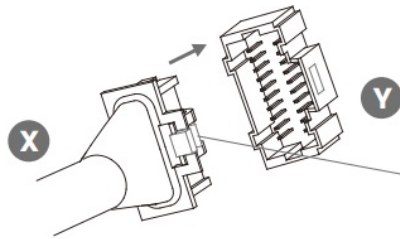
3. Insert and tighten by hand 2 screws located on the left and right of the blade. Then select screw F1/F2 according to your door thickness.
4. Check alignment and tighten with a screwdriver until the mounting plate is securely placed on the door.



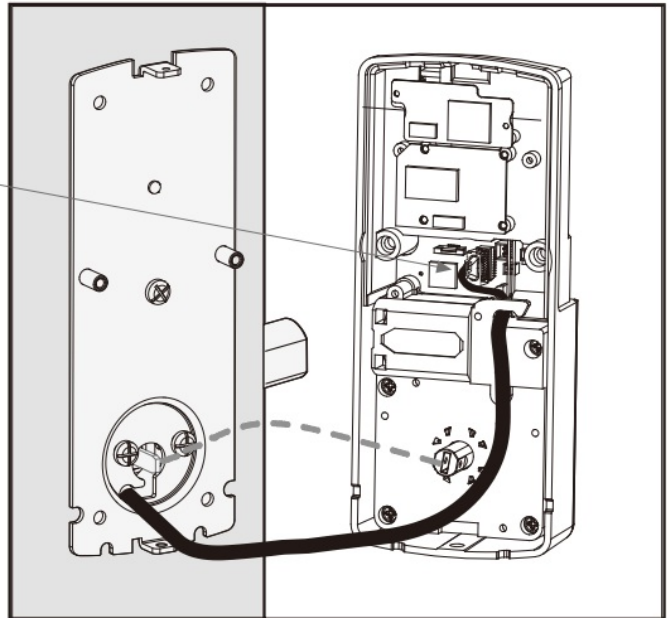
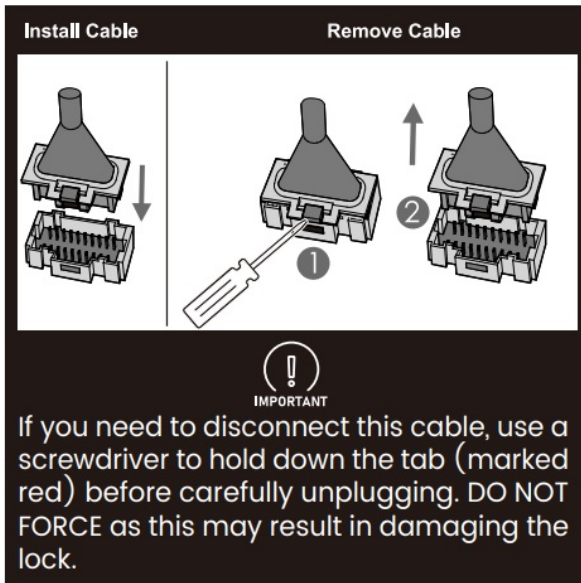
5. Use the key to ensure the deadbolt locks and unlocks smoothly (no binding or rubbing).
IMPORTANT: When finished, leave the deadbolt extended and remove the key before proceeding to the next step.

When installing screws by hand, turn screws clockwise several turns and then counterclockwise one turn to ensure smooth threading and no cross-threading.

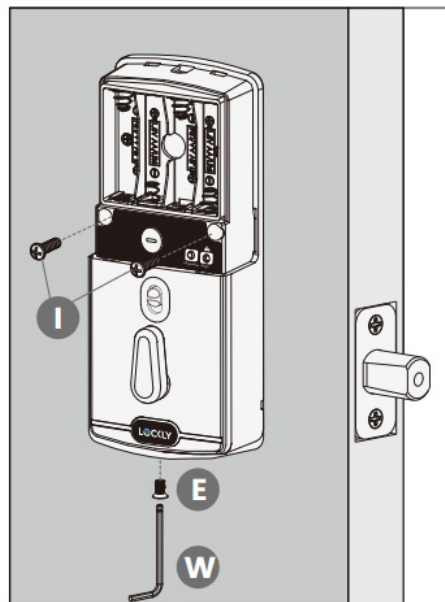
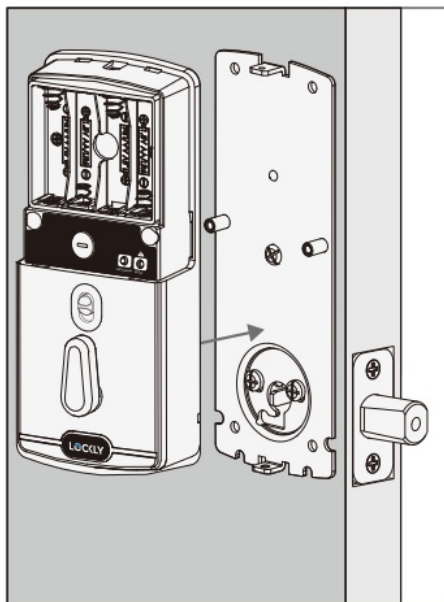
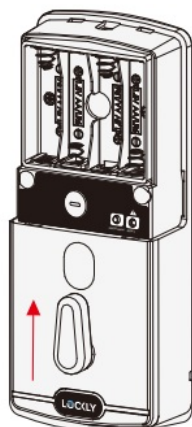
Step 4



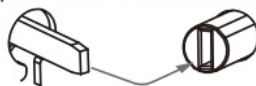
Plug **X** into **Y** , match red side of plug with red on socket - insert tightly.



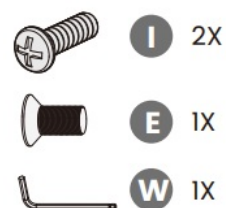
Plug the cable coming through the mounting plate into the interior assembly as shown. Tuck cable under eyelet hooks and route to the right on interior assembly F .



Torque Blade Thumb turn shaft



Align torque blade with thumb turn shaft, **make sure both are in the vertical position.**

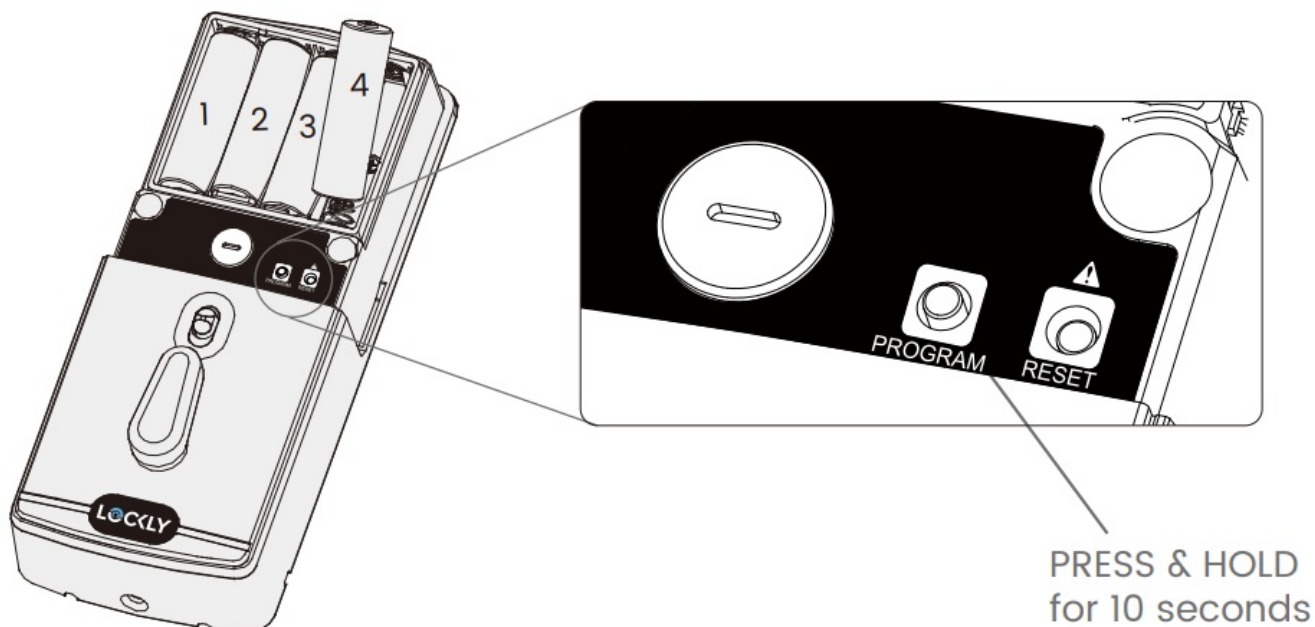


Plug x into, match the red side of the plug with the red on the socket – insert tightly.

Step 4 continued

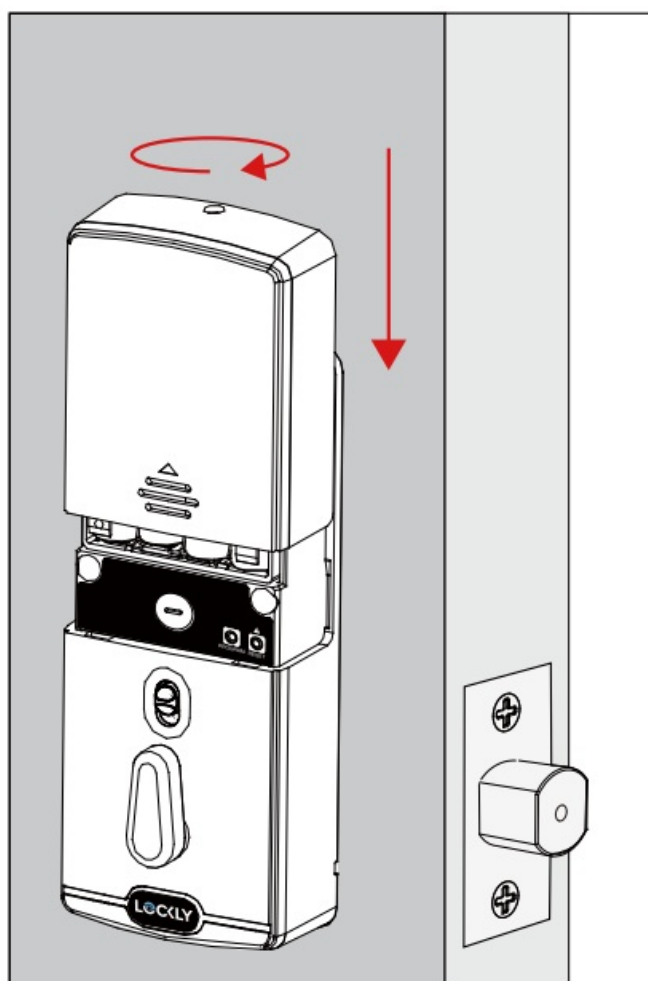
- Before placing the interior assembly onto the mounting plate, ensure the thumb turn is vertical.
- Place the interior assembly against the mounting plate and make sure the torque of the blade is inserted into the thumb turn shaft.
- Use 2 I screws to secure the interior assembly to the mounting plate. Insert and fasten screw E at the bottom with the allen wrench W.

Step 5




1. With the door open and the deadbolt fully extended, place the ribbon inside the compartment and insert 4 batteries (note correct – + polarity).
2. After all batteries are installed, PRESS and HOLD the program button for 10S. The lock will automatically start self-check (release program button once check starts). The self-check process determines the right or left swinging door and is very important to ensure correct installation.

IMPORTANT: If the lock is not properly installed it will open and close repeatedly (refer to #3).



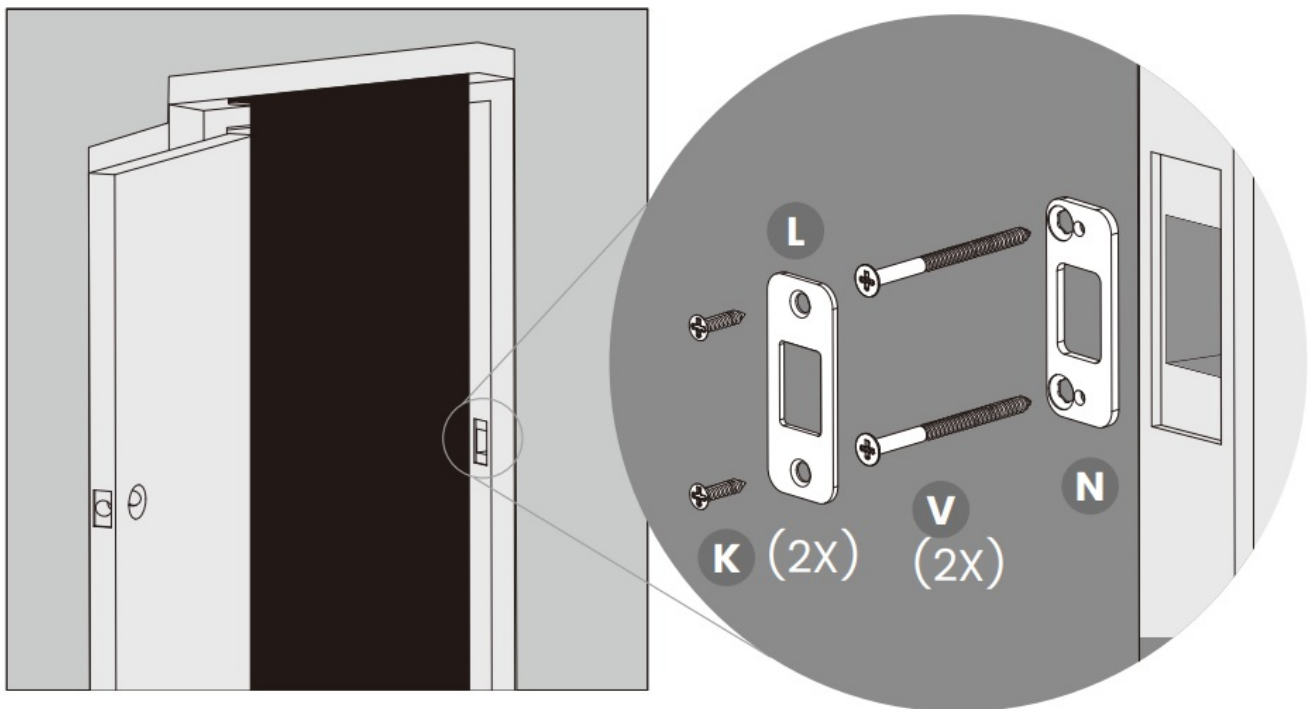
3. Once the self-check completes ensure the lock operates smoothly by manually locking and unlocking the door using the thumb turn on the interior assembly. The deadbolt should operate smoothly without any interference

or binding. If necessary, repeat step 2 and ensure that (a) the deadbolt was extended and (b) the torque blade was inserted vertically while the deadbolt was extended.

4. Swipe your hand across the touchscreen. The lock should close (lock). If the touchscreen is ON, touch , the lock should lock as well. If the deadbolt bounces back or unlocks automatically means something is not installed correctly. Go back and repeat step 2, same as above.
5. Once self-check is complete, install the battery cover, H and secure with screw on top (do not over-tighten).

Step 6

Install the supplied door strike reinforcer N and secure it with screws V . Then install the door strike L on top of the reinforcer and secure it with screws K . Make sure the deadbolt operates smoothly without binding or catching. Because doors and frames vary in design it may be necessary to make slight adjustments to your door strike and/or dust box to ensure smooth deadbolt operation. This is very important. If the deadbolt is binding or catching in any way the lock will sound an alarm (rapid beeping) indicating it cannot close due to misalignment and/or excessive rubbing or binding.



Step 7



You have completed the Lockly Guard physical lock installation. To enable live monitoring you will need to set the included Secure Link Wi-Fi hub and pair it with the Lockly Guard deadbolt smart lock. Before connecting Secure Link Wi-Fi hub download the LocklyPRO app on your smartphone. It's required to finish setup and to set (pair) the connection between the hub and lock.

Scan or visit

[LocklyPRO.com/app](https://locklypro.com/app)

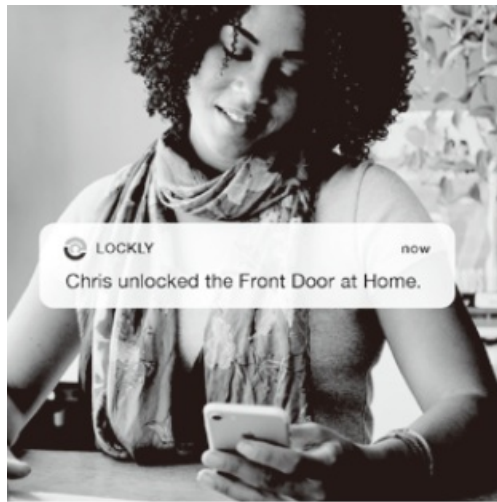


Add more Smart to your Home



Secure Link Wi-Fi Hub

Add the optional Lockly Secure Link Wi-Fi Hub, together with the free LocklyPRO app, it's easier than ever to securely control and manage your door from anywhere, anytime.



Real-time, monitoring, & status

Monitor open/closed door status with real-time alerts sent to your smartphone, no matter where you are.

Control your Lockly Guard from anywhere. Grant access, even when you're not home Lock and unlock the door from anywhere.



Available online at: [Lockly.com/hub](https://lockly.com/hub)



Hands-free voice control

Control and check your status using only your voice with Hey Google-enabled devices.



FCC Warning

This device complies with Part 15 of the FCC Rules. Operation is subject to the following two conditions: (1) This device may not cause harmful interference, and (2) this device must accept any interference received, including interference that may cause undesired operation.

NOTE 1: This equipment has been tested and found to comply with the limits for a Class B digital device, under part 15 of the FCC Rules. These limits are designed to provide reasonable protection against harmful interference in a residential installation. This equipment generates, uses, and can radiate radio frequency energy and, if not installed and used by the instructions, may cause harmful interference to radio communications. However, there is no guarantee that interference will not occur in a particular installation. If this equipment does cause harmful interference to radio or television reception, which can be determined by turning the equipment off and on, the user is encouraged to try to correct the interference by one or more of the following measures:

- Reorient or relocate the receiving antenna.
- Increase the separation between the equipment and the receiver.
- Connect the equipment to an outlet on a circuit different from that to which the receiver is connected.
- Consult the dealer or an experienced radio/TV technician for help.

NOTE 2: Any changes or modifications to this unit not expressly approved by the party responsible for compliance could void the user's authority to operate the equipment.

FCC Radiation Exposure Statement

This equipment complies with FCC radiation exposure limits set forth for an uncontrolled environment. It should be installed and operated with a minimum distance of 20cm between the radiator & your body.

IC WARNING

This device contains license-exempt transmitter(s) that comply with Innovation, Science and Economic Development Canada's license-exempt RSS(s).

Operation is subject to the following two conditions:

- (1) This device may not cause interference.
- (2) This device must accept any interference, including interference that may cause undesired operation of the

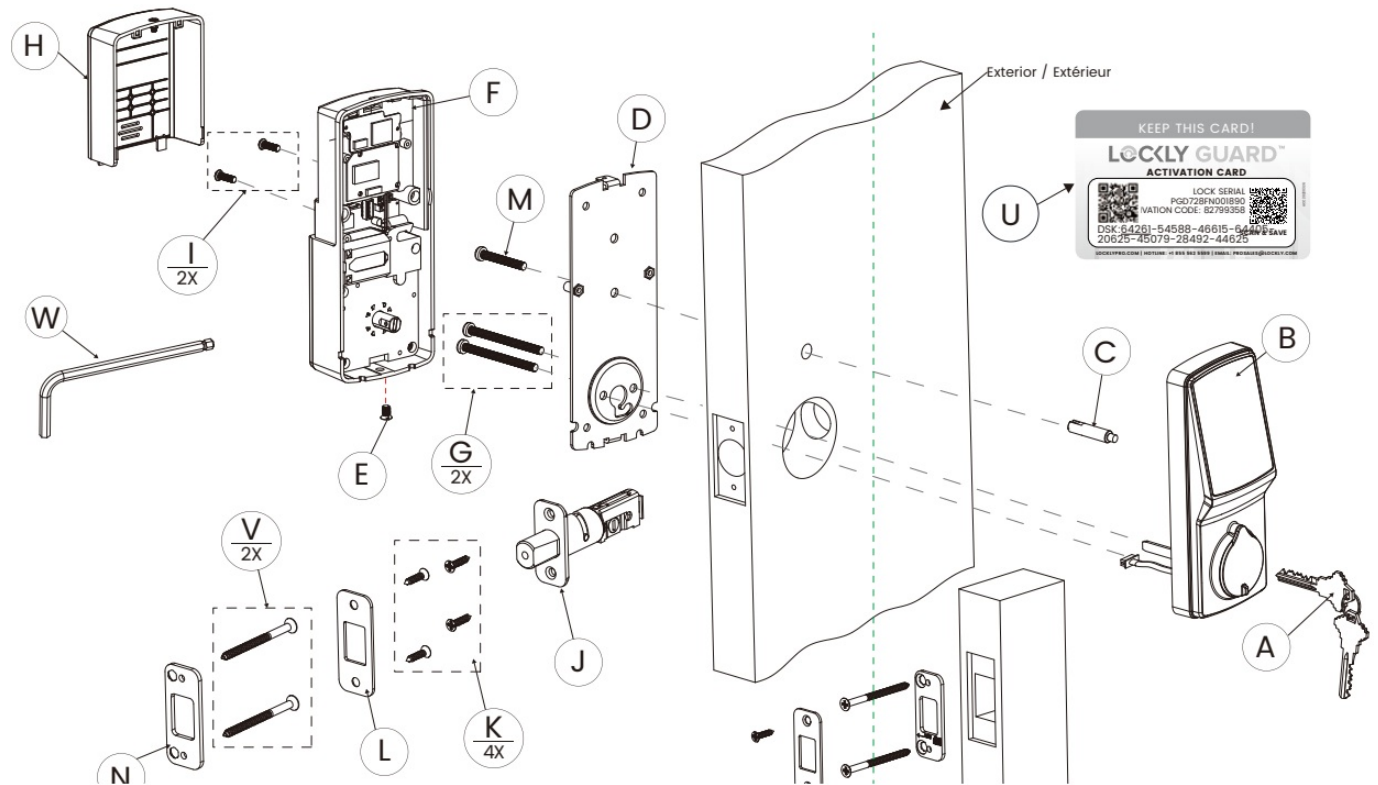
device.

IC Radiation Exposure Statement

This equipment meets the exemption from the routine evaluation limits in section 2.5 of RSS-102. It should be installed and operated with a minimum distance of 20cm between the radiator and any part of your body.

WARNING: This product can expose you to chemicals including Lead, which is known to the State of California to cause cancer. For more information go to www.P65Warnings.ca.gov.

INSTALLATION OVERVIEW AND PARTS LIST



Labeled As Étiqueté comme	Description
A	Keys / Clés
B	Exterior Assembly / Ensemble extérieur
C	Outer screw bolt / Boulon à vis extérieur
D	Mounting Plate / Plaque de fixation
E	KM4 x 8mm screw / Vis KM4 x 8mm
F	Interior Assembly / Ensemble intérieur
G	PM5 x 60mm screw / Vis PM5 x 60mm
H	Battery cover / Couvercle de pile
I	PM4 x 12mm Screw / Vis PM4 x 12mm
J	Deadbolt / Pêne dormant
K	KA4 x 20mm screw / Vis KA4 x 20mm
L	Strike Plate / Gâche de porte
M	F1 PM5 x 25mm Screw / F1 Vis PM5 x 25mm F2 PM5 x 35mm Screw / F2 Vis PM5 x 35mm
N	Strengthen strike seat / Renforcer le siège de la gâche
U	Activation Card / Carte d'activation
V	ST5 x 70mm screw / Vis ST5 x 70mm
W	Wrench / Clé à molette

Parts List

Lockly Guard™ can be fitted for both right swing doors and left swing doors.

GET THE MOST OUT OF YOUR LOCAL GUARD™

TIREZ LE MEILLEUR PARTI DE VOTRE LOCKLY GUARD™™

Get the latest user/installation manuals instructional videos, and FAQs

SCAN or VISIT

[LocklyPRO.com/downloads](https://locklypro.com/downloads)



We're here to help!
prosales@lockly.com




LocklyPRO.com/support




Copyright 2024 LocklyPro All rights reserved
US Patent NO. US 9,881,146 B2 | US Patent NO. US 9,853,815 B2 | US Patent NO. US 9,875,350 B2 | US Patent NO. US 9,665,706 B2 | US Patent NO. US 11,010,463 B2 | AU Patent NO. EP3059689B1 | UK Patent NO. EP3176722B1 | Other Patents Pending



The Bluetooth® word mark and logos are registered trademarks owned by the Bluetooth SIG, Inc., and any use of such marks by Lockly is under license. Other trademarks and trade names are those of their respective owners. Google, Android, and Google Play are trademarks of Google LLC.

Documents / Resources

	<p>LOCKLY 728WZ Wave Edition Smart Lock Keypad [pdf] Installation Guide 728WZ, 728F ZU, 728WZ Wave Edition Smart Lock Keypad, 728WZ, Wave Edition Smart Lock Keypad, Smart Lock Keypad, Lock Keypad, Keypad</p>
---	---

References

-  [Secure Link Wi-Fi Hub | Lockly®](#)
-  [LocklyPRO](#)
-  [Contact 3 — LocklyPRO](#)

-  [LocklyPRO](#)
-  [P65Warnings.ca.gov](#)
- [User Manual](#)

[Manuals+](#), [Privacy Policy](#)

This website is an independent publication and is neither affiliated with nor endorsed by any of the trademark owners. The "Bluetooth®" word mark and logos are registered trademarks owned by Bluetooth SIG, Inc. The "Wi-Fi®" word mark and logos are registered trademarks owned by the Wi-Fi Alliance. Any use of these marks on this website does not imply any affiliation with or endorsement.