



LOCKLY GUARD PGD728F Z Lockly Secure Plus Deadbolt Installation Guide

[Home](#) » [LOCKLY GUARD](#) » LOCKLY GUARD PGD728F Z Lockly Secure Plus Deadbolt Installation Guide 

Contents

- 1 LOCKLY GUARD PGD728F Z Lockly Secure Plus Deadbolt
- 2 GET THE MOST OUT OF YOUR LOCKLY GUARD™
- 3 Preparation
- 4 ADJUST DEADBOLT AND INSTALL
- 5 INSTALLING EXTERIOR ASSEMBLY
- 6 INSTALLING BATTERIES
- 7 INSTALLING STRIKE PLATE
- 8 DOWNLOAD LOCKLY PRO APP
- 9 Add more Smart to your Home
- 10 FCC Warning
- 11 IC Radiation Exposure Statement
- 12 Documents / Resources
 - 12.1 References
- 13 Related Posts



LOCKLY GUARD PGD728F Z Lockly Secure Plus Deadbolt



GET THE MOST OUT OF YOUR LOCKLY GUARD™

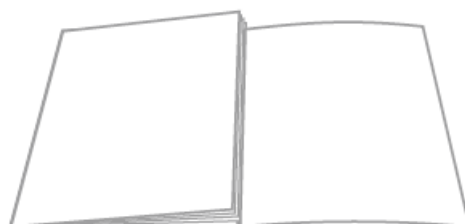
Get the latest user/installation manuals , instructional videos, and FAQs



SCAN or VISIT SCANNER ou VISITER LocklyPro.com/728fz

Welcome!

This guide will walk you through step-by-step how to install and get your Lockly Guard™ up and running. Installation generally takes less than 30 minutes. If you have any questions please reference our online support at: LocklyPro.com/support or call (669) 500-8835 for help.



- Reference installation parts overview foldout on back page

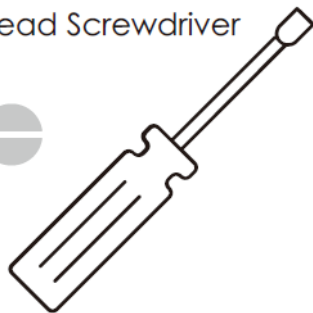
Preparation

- To complete installation, you would need the following:

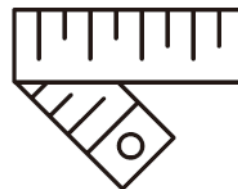
Phillips Screwdriver



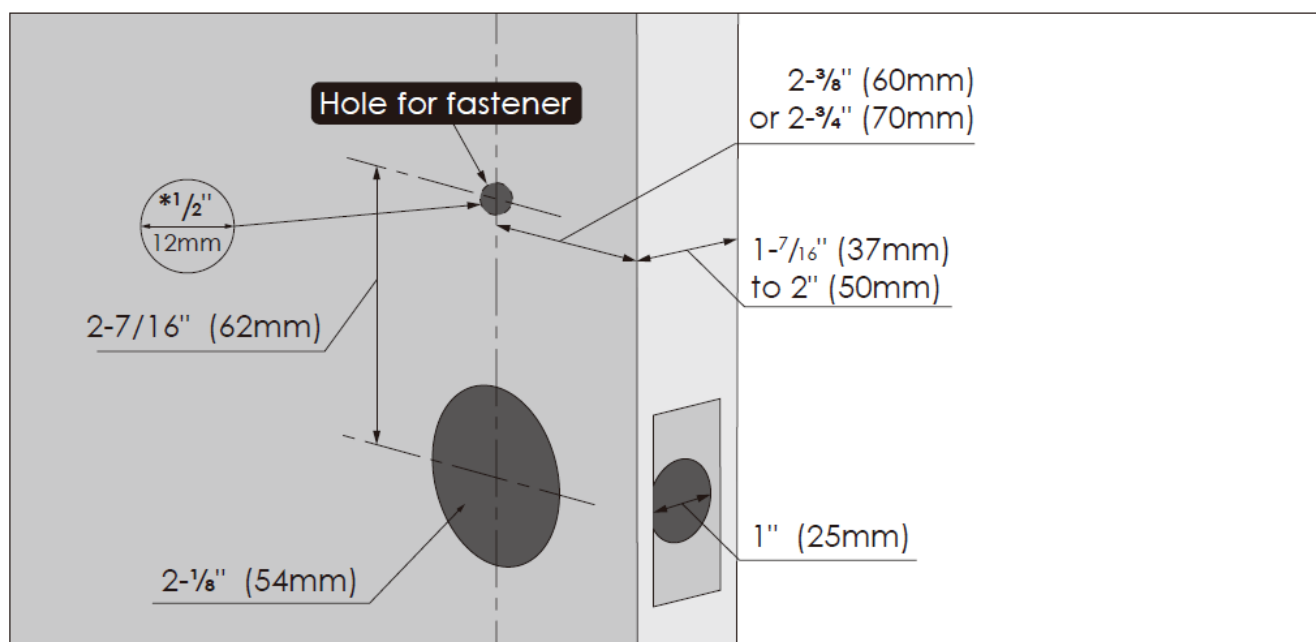
Flathead Screwdriver



Tape measure or ruler



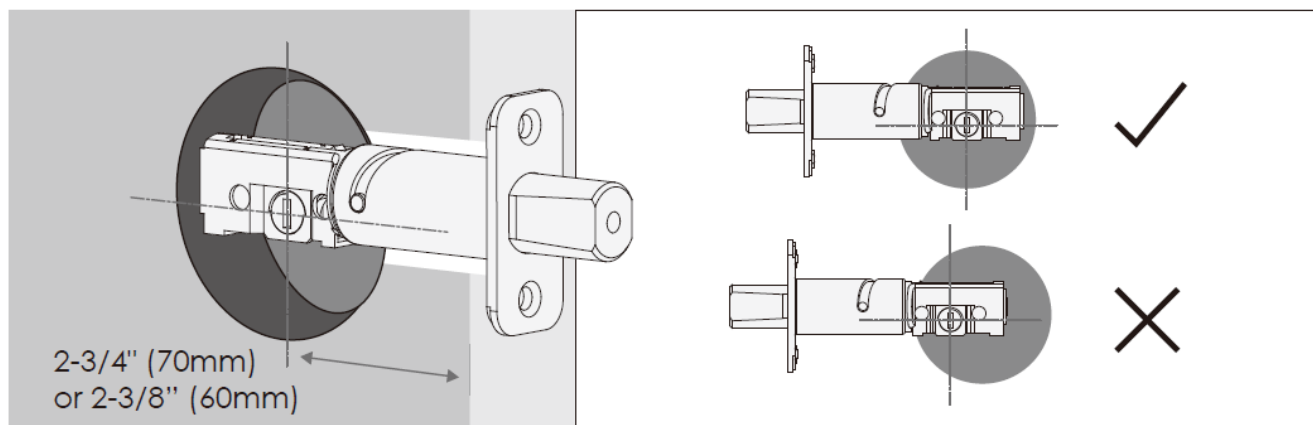
- Prepare door: remove existing deadbolt or use provided template to bore new holes.



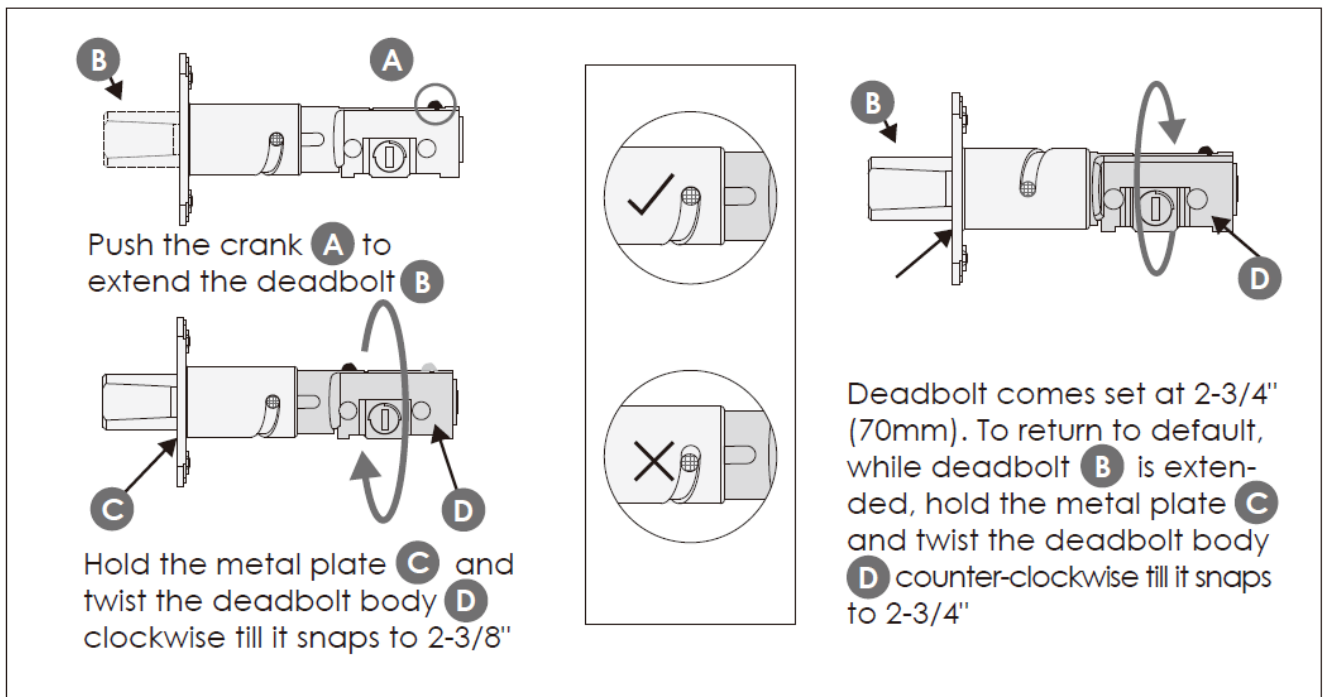
ADJUST DEADBOLT AND INSTALL

Step 1

- Deadbolt slot must align to the center of the door hole. Adjust as shown if needed.

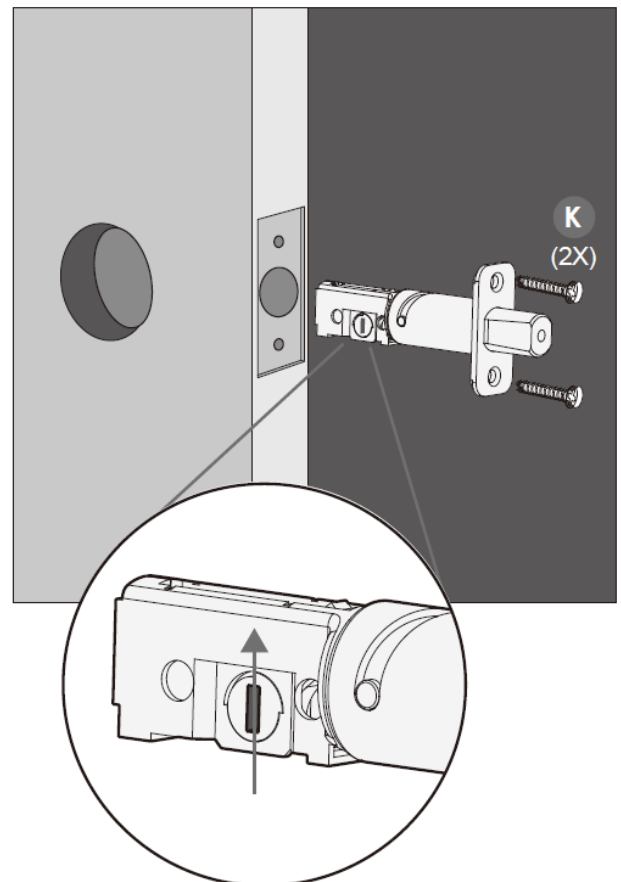
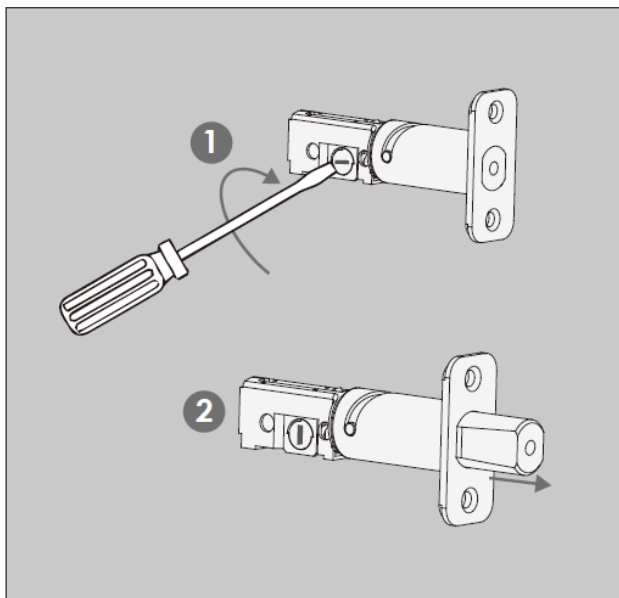


- The deadbolt comes set to 2-3/4" (70mm). Adjust length to 2-3/8" (60mm) if necessary. (wear gloves to protect from possible pinching).



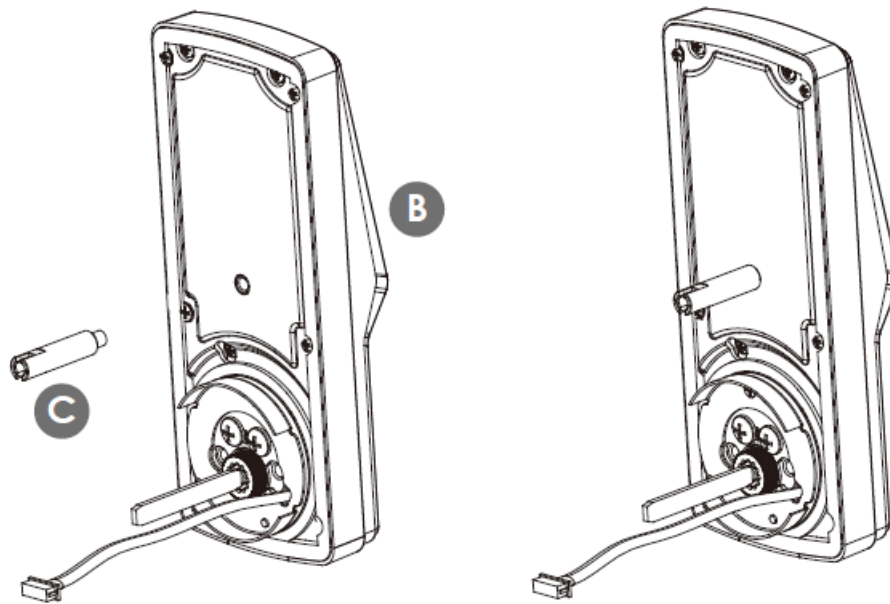
Step 1continued

- Extend the deadbolt by inserting a flat-head screwdriver into the slot and turning clockwise.
- Insert the deadbolt into door edge hole, make sure that the right side is up and the slot is in the vertical position. Secure with 2 K screws.

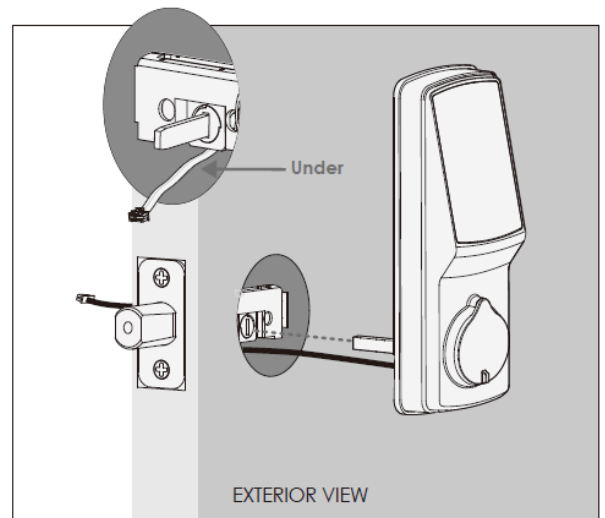
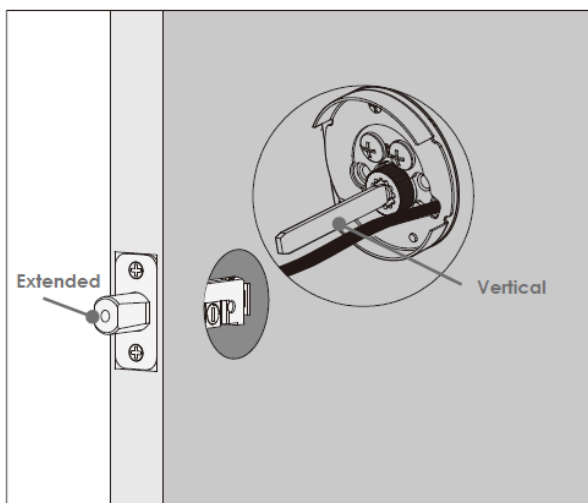


INSTALLING EXTERIOR ASSEMBLY

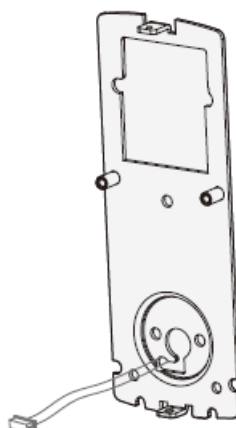
Step 2



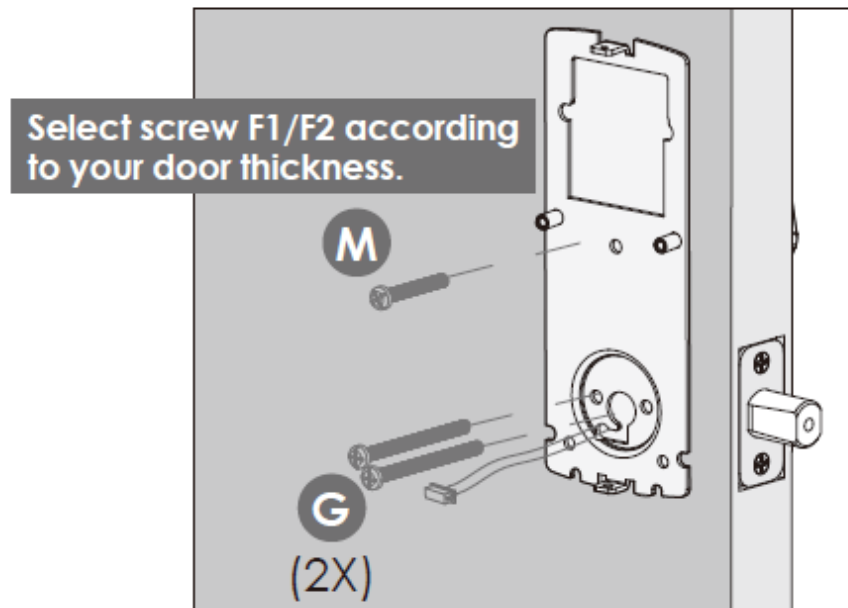
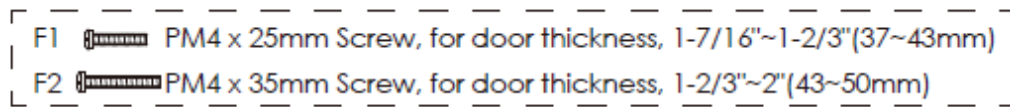
- Using a flat head screwdriver, insert fastener screw bolt **C** to the hole at the back of the exterior assembly **B** . Turn clockwise to tighten the screw bolt.
- Make sure torque blade is in the vertical position with the deadbolt extended. Place assembly and torque blade through the deadbolt slot and guide connection cables through the cross-bore hole under the deadbolt as shown. Complete mounting by aligning and securing until flush to exterior door surface.



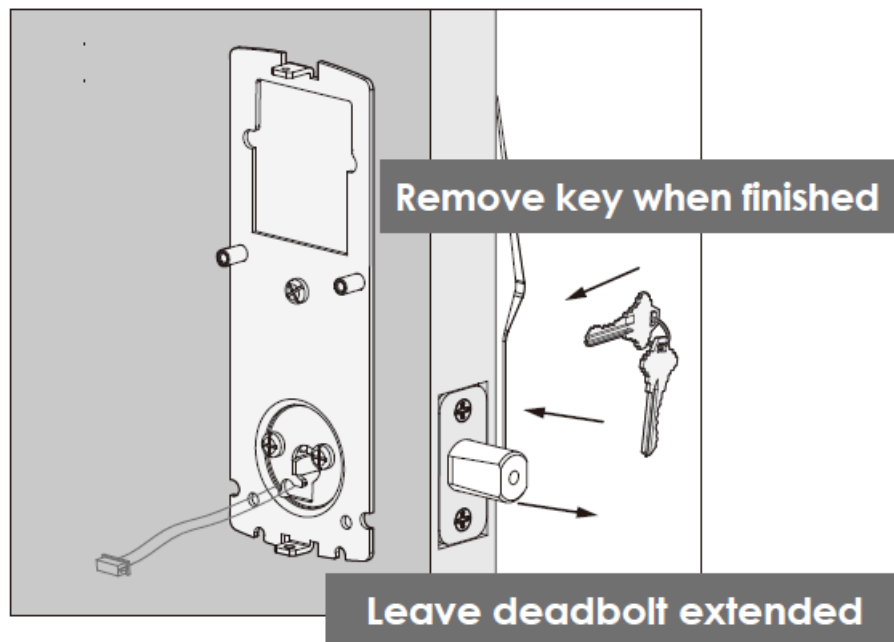
Step 3



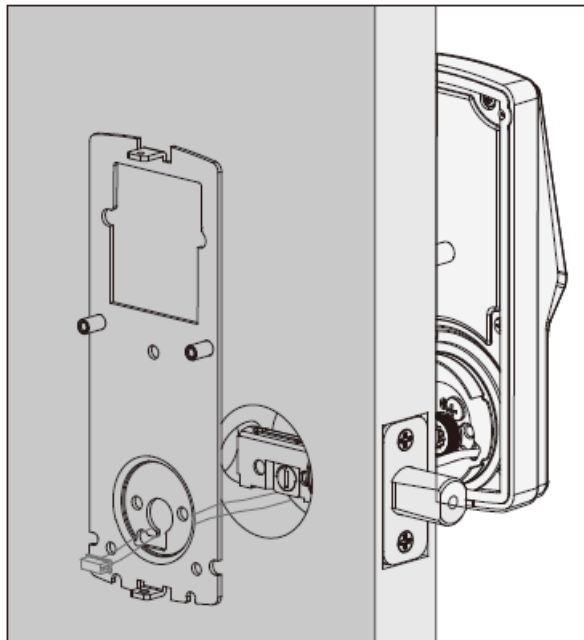
1. Check interior mounting plate **D** alignment to your door hole before securing with adhesive strips.



2. Align and secure mounting plate with adhesive strips. Guide connection cables through the hole and secure to the lower left notched hole.



3. Insert and tighten by hand 2 **G** screws located on the left and right of the blade. Then select screw F1/F2 according to your door thickness. Check alignment and tighten with screwdriver until mounting plate is securely placed on door.



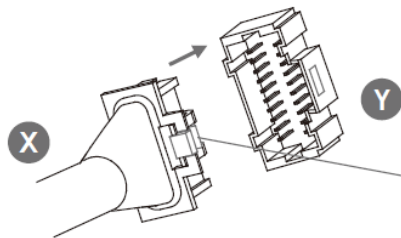
4. Use the key to ensure deadbolt locks and unlocks smoothly (no binding or rubbing).

IMPORTANT: When finished, leave the deadbolt extended and remove the key before proceeding to the next step.

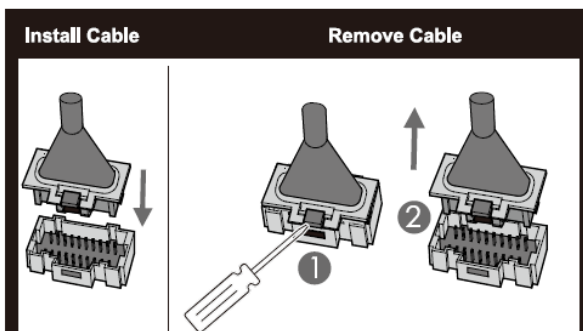
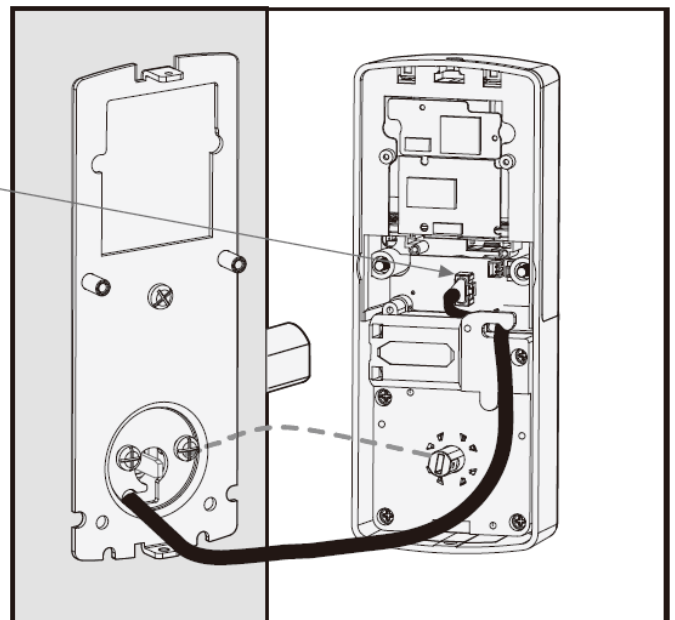
TIP: When installing screws by hand, turn screws clockwise several turns then counterclockwise one turn to ensure smooth threading and no cross threading.

Step 4

- Plug the cable coming through mounting plate **D** into the interior assembly **F** as shown. Tuck cable under eyelet hooks and route to the right on interior assembly **F**.



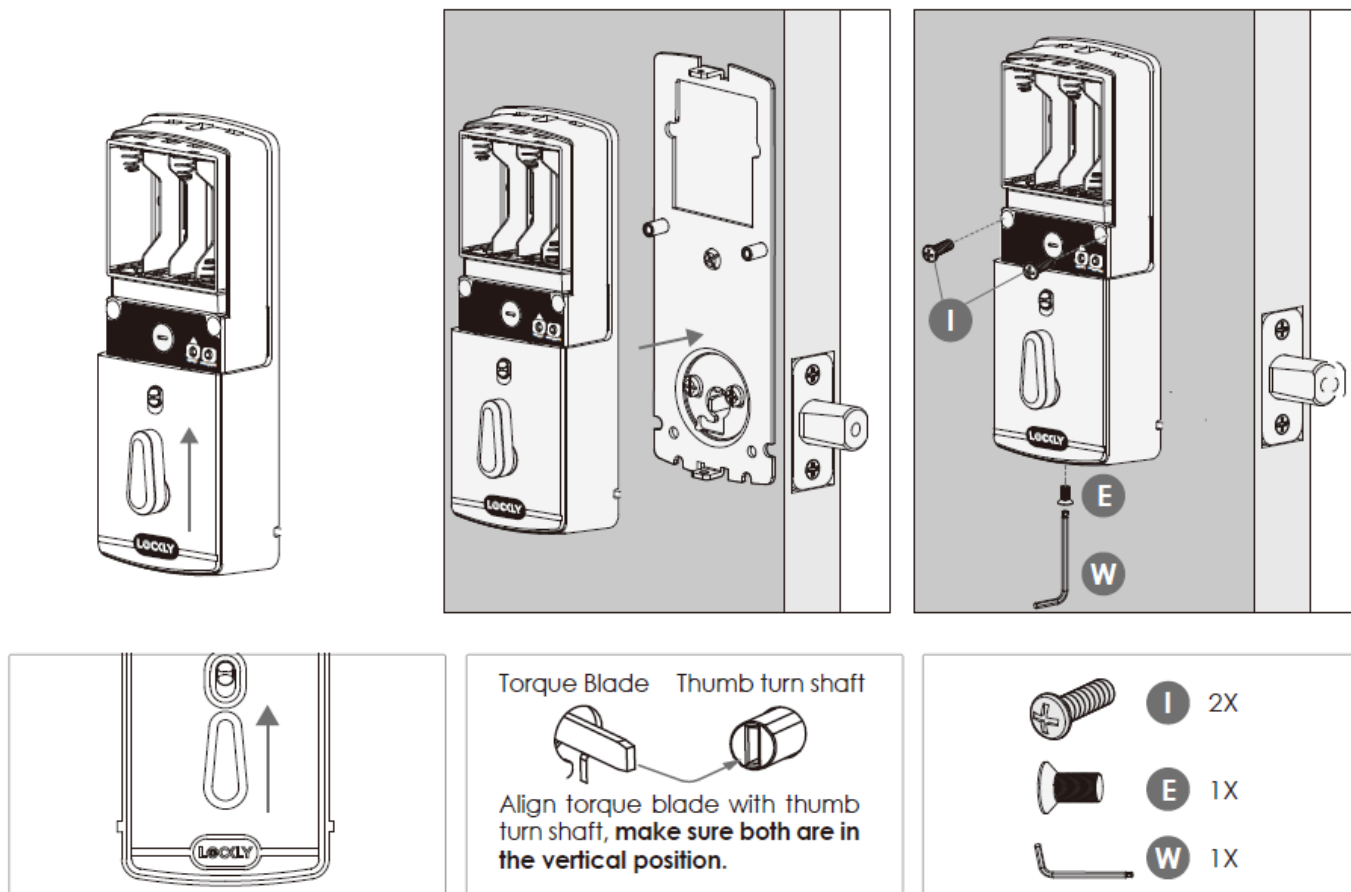
Plug **X** into **Y**, match red side of plug with red on socket - insert tightly.



IMPORTANT:

If you need to disconnect this cable, use a Screwdriver to hold down the fab (marked red) before carefully

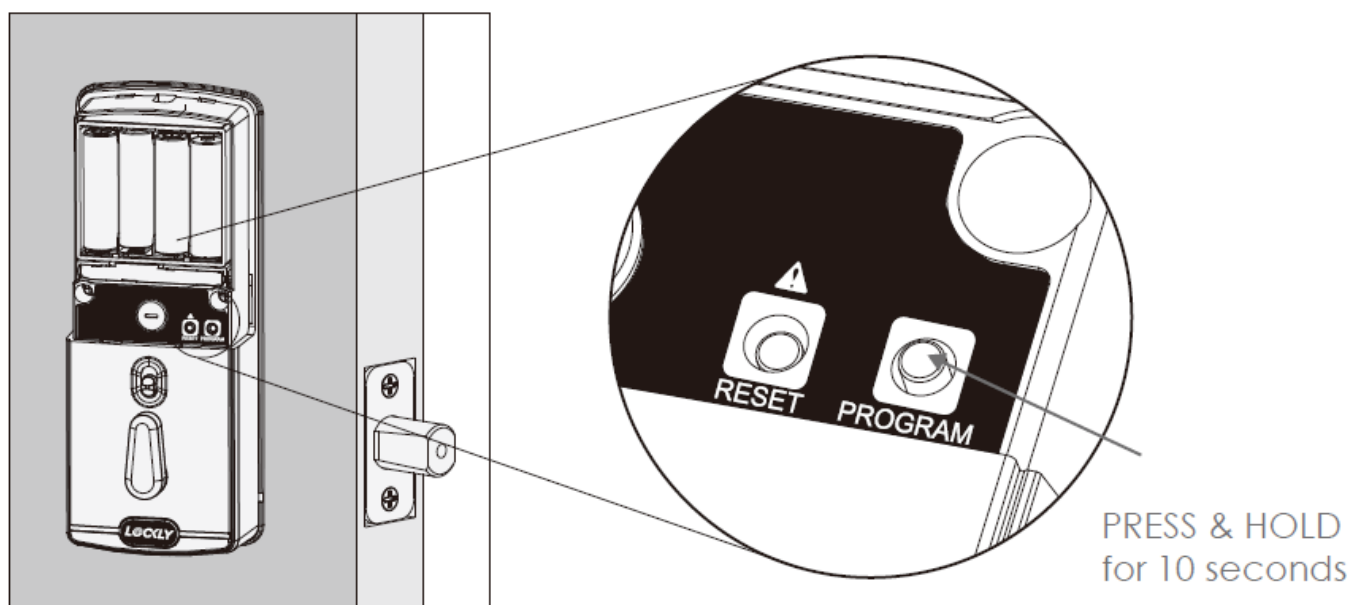
unplugging. DO NOT FORCE as this may result in damaging the lock.



- Before placing the interior assembly onto the mounting plate, ensure the thumb turn is vertical.
- Place the interior assembly against the mounting plate and make sure the torque blade is inserted to the thumb turn shaft.
- Use 2 I screws to secure the interior assembly to the mounting plate. Insert and fastened screw E at bottom with the allen wrench W.

INSTALLING BATTERIES

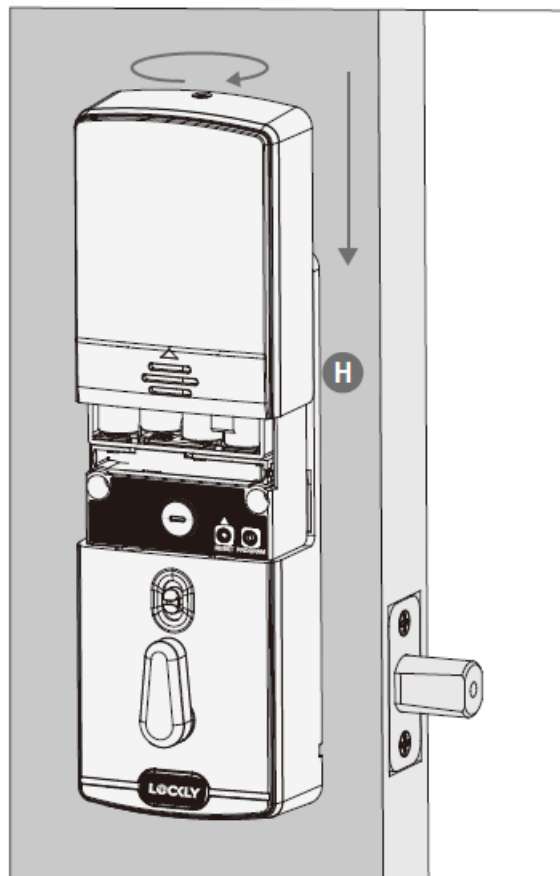
Step 5



1. With door open and deadbolt fully extended, place ribbon inside compartment and insert 8 batteries (note correct +/- polarity).
2. After all batteries are installed, PRESS and HOLD the program button for 10S. The lock will automatically start self-check (release program button once check starts). The self-check process determines right or left swinging door and is very important to ensure correct installation.

IMPORTANT: If lock is not properly installed it will open and close repeatedly (refer to #3)

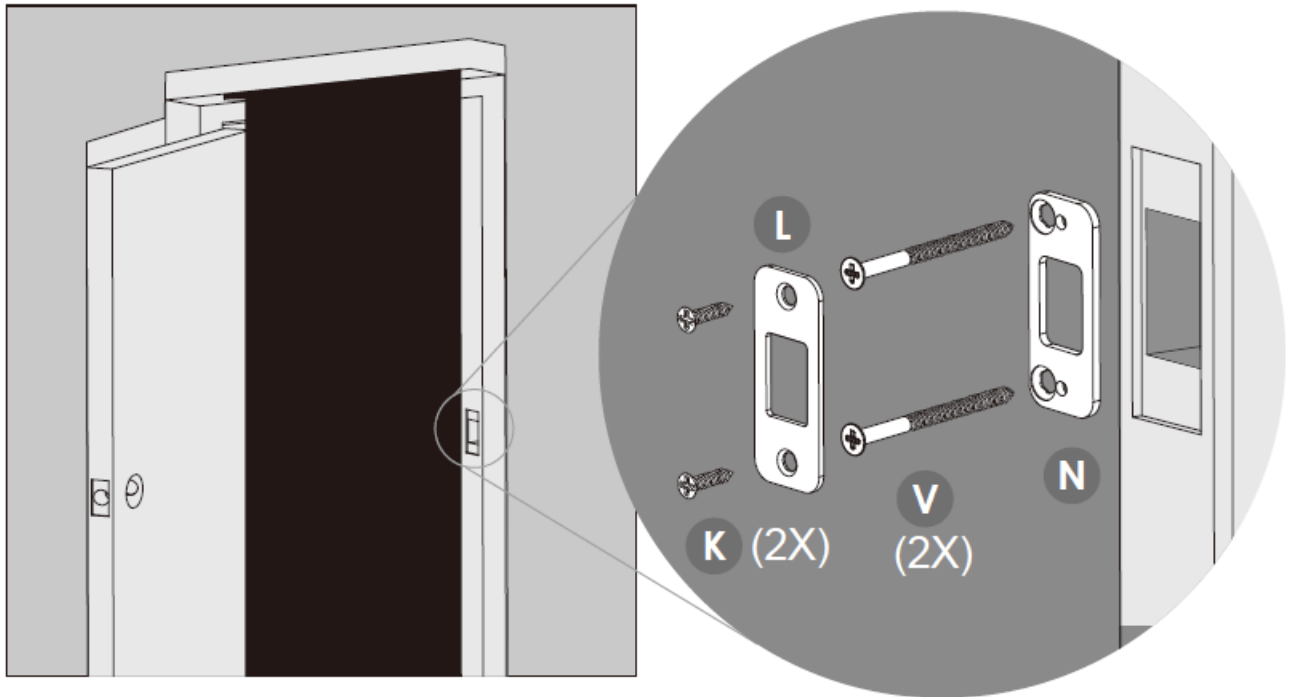
3. Once self-check completes ensure the lock operates smoothly by manually locking and unlocking the door using the thumb turn on the interior assembly. The deadbolt should operate smoothly without any interference or binding. If necessary, repeat step 2 and ensure that (a) the deadbolt was extended and (b) the torque blade was inserted vertically while the deadbolt was extended.
4. Swipe your hand across the touchscreen. The lock should close (lock). If the touchscreen is ON, touch , the lock should lock as well. If the deadbolt bounces back or unlocks automatically it means something is not installed correctly. Go back and repeat step 2, same as above.
5. Once self-check is complete, install battery cover **H** , secure with screw on top (do not over tighten)..



INSTALLING STRIKE PLATE

Step 6

Install the supplied door strike reinforcer **N** and secure with screws **V** . Then install the door strike **L** on top of the reinforcer and secure with screws **K**. Make sure deadbolt operates smoothly without binding or catching.



IMPORTANT: Because doors and frames vary in design it may be necessary to make slight adjustments to your door strike and/or dust box in order to ensure smooth deadbolt operation. This is very important. If the deadbolt is binding or catching in any way the lock will sound an alarm (rapid beeping) indicating it cannot close due to misalignment and/or excessive rubbing or binding.

DOWNLOAD LOCKLY PRO APP

Step 7

You have completed the Lockly Guard physical lock installation. To enable live monitoring you will need to setup the included Secure Link Wi-Fi hub and pair it with the Lockly Guard deadbolt smart lock. Before connecting Secure Link Wi-Fi hub download the LocklyPro app on your smartphone. It's required to finish setup and to set (pair) the connection between hub and lock.

Scan or visit
[LocklyPro.com/app](https://locklypro.com/app)



Add more Smart to your Home

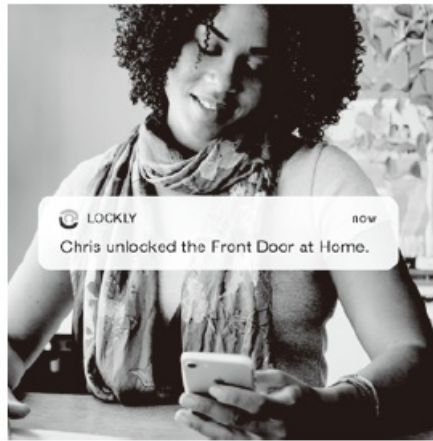
Secure Link Wi-Fi Hub

- Add the optional Lockly Secure Link Wi-Fi Hub, together with the free LocklyPro app, it's easier than ever to securely control and manage your door from anywhere, anytime.



Real-time, monitoring, & status

Monitor open/closed door status with real-time alerts sent to your smart phone, no matter where you are.



Control your Lockly Guard from anywhere



Grant access, even when you're not home Lock and unlock door from anywhere.

Hands-free voice control

Control and check your status using only your voice with Hey Google -enabled devices.



- Available online at: [Lockly.com/hub](https://lockly.com/hub)



FCC Warning

This device complies with Part 15 of the FCC Rules. Operation is subject to the following two conditions: (1) This device may not cause harmful interference, and (2) this device must accept any interference received, including interference that may cause undesired operation.

NOTE 1: This equipment has been tested and found to comply with the limits for a Class B digital device, pursuant to part 15 of the FCC Rules. These limits are designed to provide reasonable protection against harmful interference in a residential installation. This equipment generates, uses and can radiate radio frequency energy and, if not installed and used in accordance with the instructions, may cause harmful interference to radio communications. However, there is no guarantee that interference will not occur in a particular installation. If this equipment does cause harmful interference to radio or television reception, which can be determined by turning the equipment off and on, the user is encouraged to try to correct the interference by one or more of the following measures:

- Reorient or relocate the receiving antenna.
- Increase the separation between the equipment and receiver.
- Connect the equipment into an outlet on a circuit different from that to which the receiver is connected.
- Consult the dealer or an experienced radio/TV technician for help.

NOTE 2: Any changes or modifications to this unit not expressly approved by the party responsible for compliance could void the user's authority to operate the equipment.

FCC Radiation Exposure Statement

This equipment complies with FCC radiation exposure limits set forth for an uncontrolled environment. It should be installed and operated with minimum distance 20cm between the radiator & your body.

IC WARNING

This device contains licence-exempt transmitter(s) that comply with Innovation, Science and Economic Development Canada's licence-exempt RSS(s). Operation is subject to the following two conditions:

1. This device may not cause interference.
2. This device must accept any interference, including interference that may cause undesired operation of the device.

IC Radiation Exposure Statement

This equipment meets the exemption from the routine evaluation limits in section 2.5 of RSS-102. It should be installed and operated with a minimum distance of 20cm between the radiator and any part of your body.

WARNING: This product can expose you to chemicals including Lead, which is known to the State of California to cause cancer. For more information go to www.P65Warnings.ca.gov.

FOR COMMERCIAL USE & PROFESSIONAL INSTALLATION


- Prosales@lockly.com LocklyPro.com/support

Copyright 2022 LocklyPro All rights reserved






USA Patent NO. US 9,881,146 B2 | USA Patent NO. US 9,853,815 B2 | USA Patent NO. US 9,875,350 B2 | USA Patent NO. US 9,665,706 B2 | USA Patent NO. US 11,010,463 B2 | AU Patent NO. 2013403169 | AU Patent NO. 2014391959 | AU Patent NO. 2016412123 | UK Patent NO. EP3059689B1 | UK Patent NO. EP3176722B1 | Other Patents Pending The Bluetooth® word mark and logos are registered trademarks owned by the Bluetooth SIG, Inc. , and any use of such marks by Lockly is under license. Other trademarks and trade names are those of

their respective owners. Google, Android and Google Play are trademarks of Google LLC.

Documents / Resources

	<p>LOCKLY GUARD PGD728F Z Lockly Secure Plus Deadbolt [pdf] Installation Guide PGD728F Z Lockly Secure Plus Deadbolt, PGD728F Z, Lockly Secure Plus Deadbolt, Deadbolt</p>
---	---

References

-  [Lockly Pro-Total Access Solution for Properties & Offices](#)
-  [Lockly Pro App - Lockly Pro](#)
-  [Support Page - Lockly Pro](#)
-  [Lockly Pro-Total Access Solution for Properties & Offices](#)
-  [P65Warnings.ca.gov](#)