



## Lock Lock G05 Automatic Narrow Body Smart Lock fingerprint User Manual

[Home](#) » [Lock Lock](#) » Lock Lock G05 Automatic Narrow Body Smart Lock fingerprint User Manual 

# LOCK&LOCK

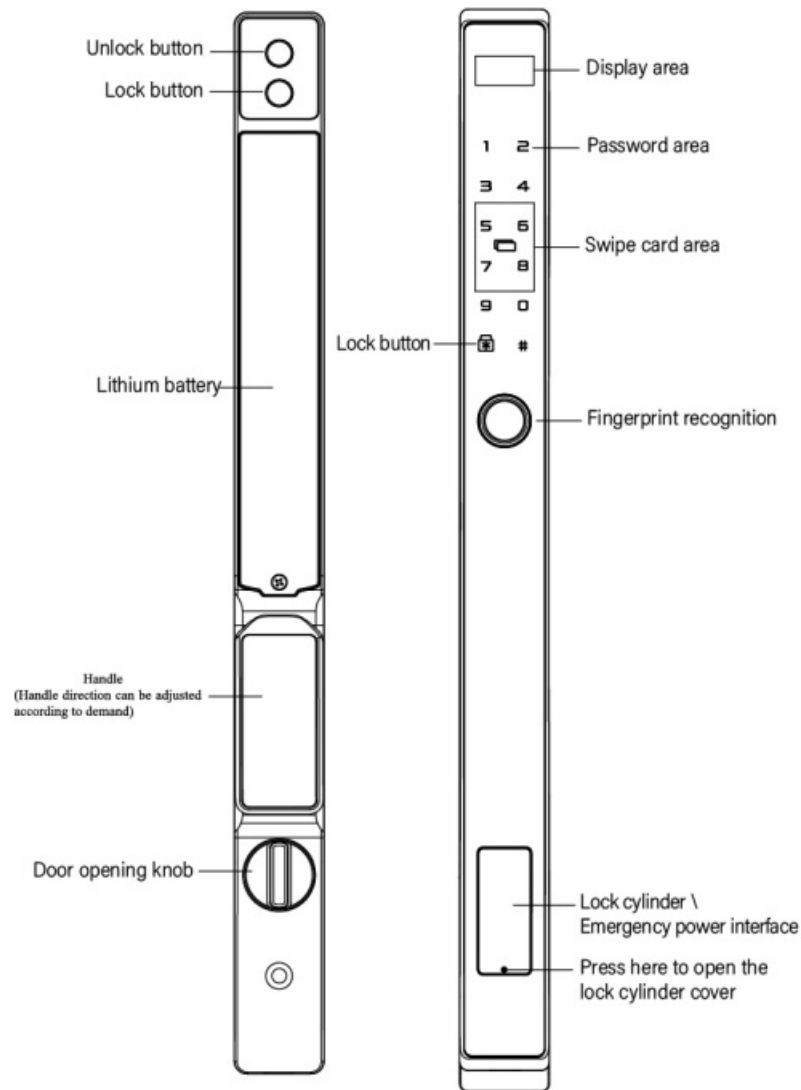
Automatic Narrow Body  
Smart Lock Manual



## Contents

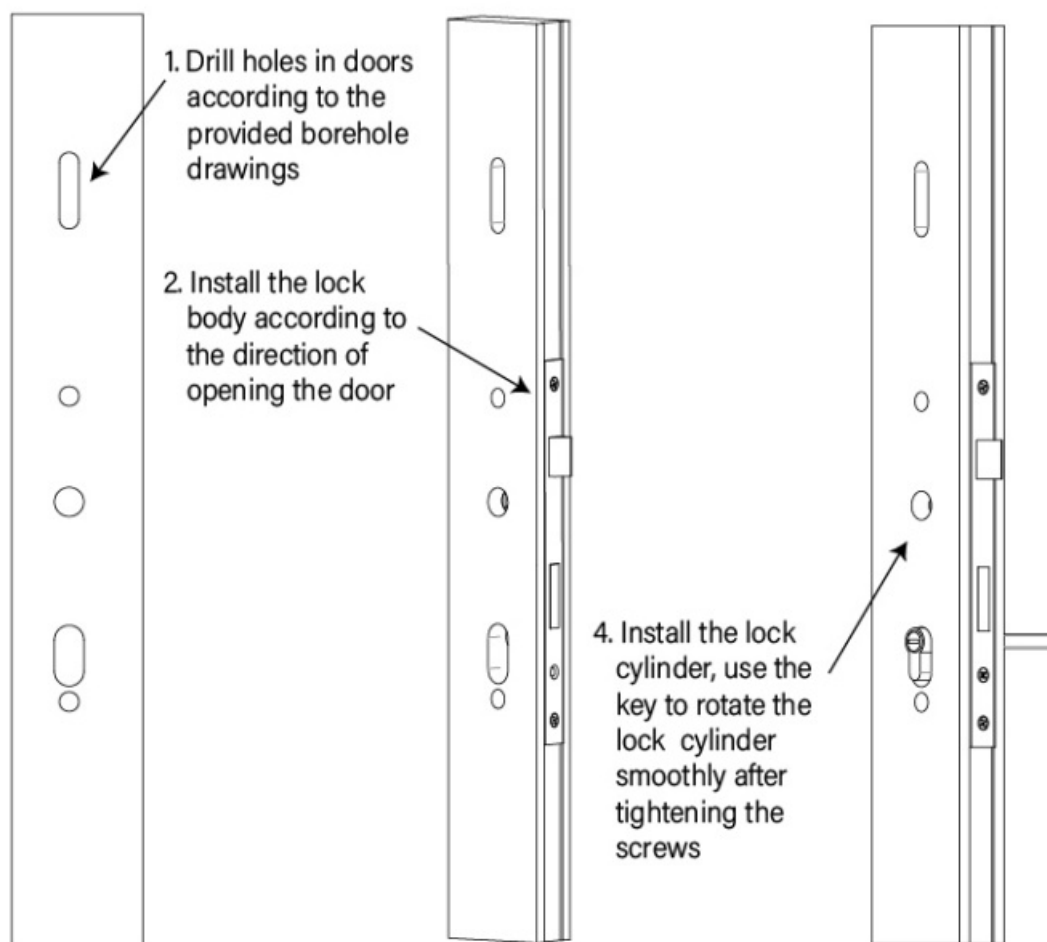
- 1 [G05 Automatic Narrow Body Smart Lock fingerprint](#)
- 2 [Installation method](#)
- 3 [Function description](#)
- 4 [Administrator Settings](#)
- 5 [General user settings](#)
- 6 [Manage wireless users](#)
- 7 [System setting](#)
- 8 [Data statistics](#)
- 9 [List of accessories](#)
- 10 [Product size](#)
- 11 [Warranty card](#)
- 12 [Documents / Resources](#)

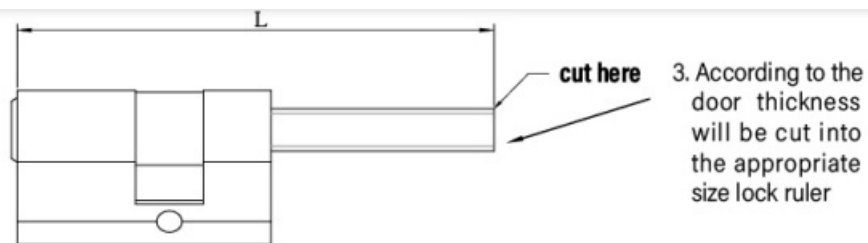
## G05 Automatic Narrow Body Smart Lock fingerprint



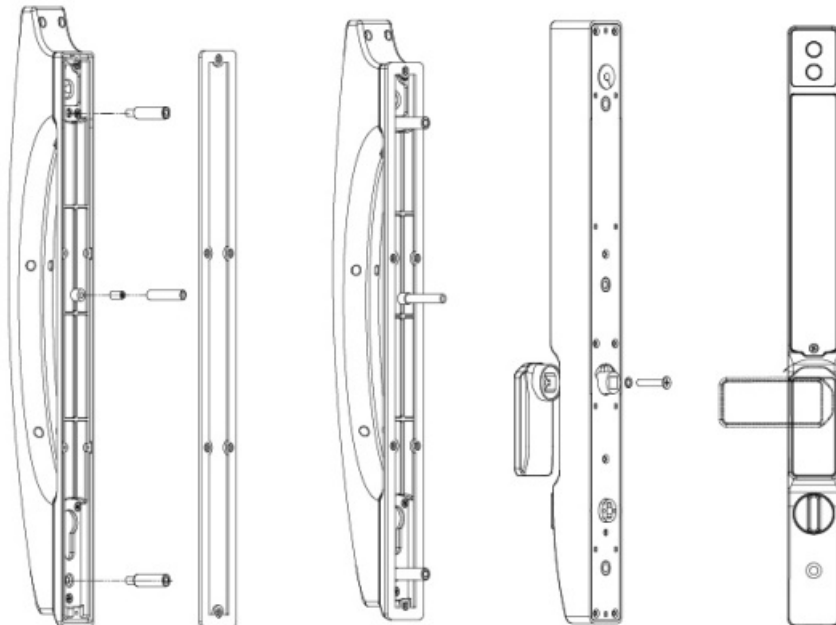
Product function			
Fingerprint recognition	Support	swipe card unlocking	Support
Key unlocking	Support	Remote unlocking	Optional
Password unlocking	Support	APP unlocking	Optional
Password anti peeping function	Support	Combination unlock	Support
Disable magnetic card unlocking	Support	Emergency power supply	5V(Micro USB)
NFC function	Support	International protection	IP56
Product parameters			
Administrator user	10	fingerprint capacity	50
Ordinary users	290	card capacity	Total 250 groups
Power supply	8.4V	password capacity	
Undervoltage indication	<7V	Battery capacity	2600MA
Low voltage stop working	<6.5V	Working Temperature	-20°—+80°

## Installation method





Cut lock ruler by door thickness  $L=(\text{door thickness}/2)+38$



5. Screws and studs will be tightened to the front panel as shown in the figure

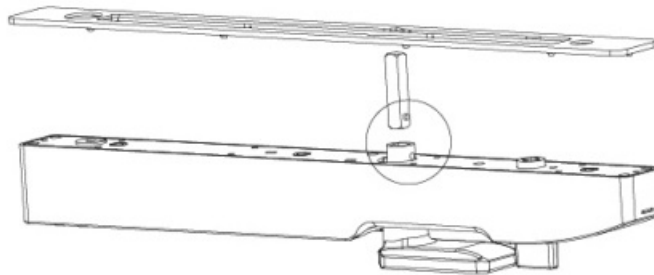
6. According to the way to open the door if the sliding door can be placed vertically handle.

If the door is a sliding door, the handle can be placed horizontally according to the direction of the door

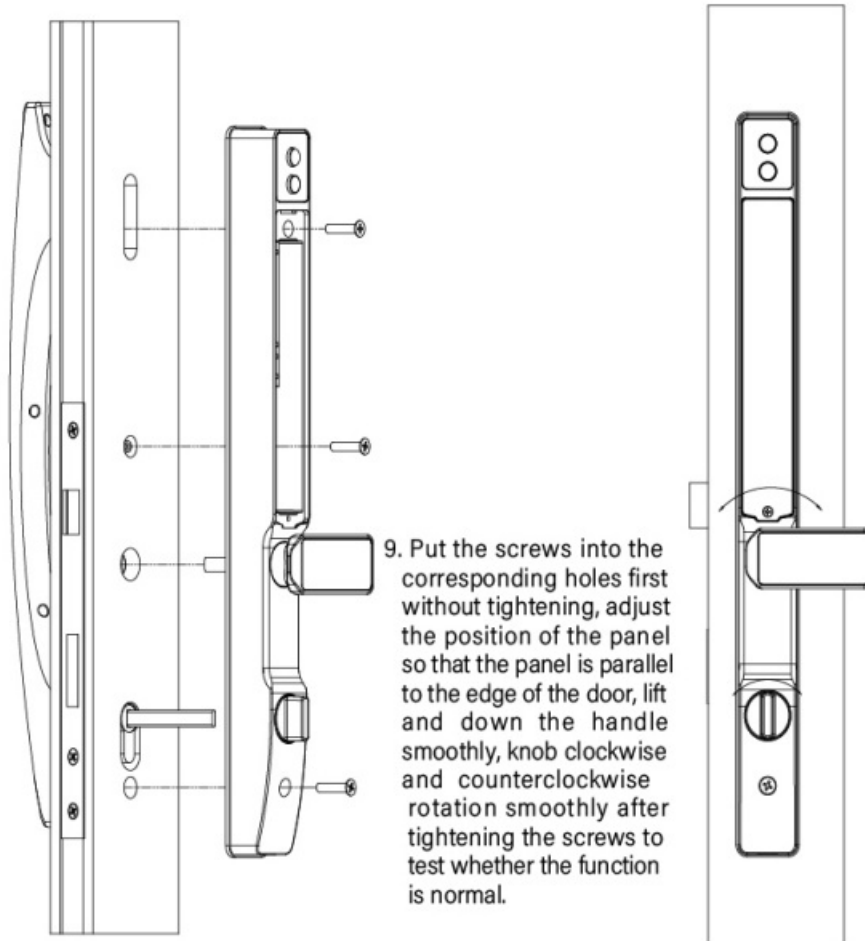
7. Cut the square steel according to the thickness of the door, the specific formula as shown



Length of square steel  $L=(\text{door thickness}/2)+12$



8. As shown in the figure will be square steel inserted into the panel for the position, and installed on the silicone pad



9. Put the screws into the corresponding holes first without tightening, adjust the position of the panel so that the panel is parallel to the edge of the door, lift and down the handle smoothly, knob clockwise and counterclockwise rotation smoothly after tightening the screws to test whether the function is normal.

## Function description

### 1. Factory setting menu (when no administrator is added, enter 888 and press # to confirm, enter factory setting menu)

1. Double hook lock body mode [open] with double hook lock body need to turn this mode on, with the lock body with oblique tongue need to turn this mode off.
2. Door opening mode [left] such as door hinge in the right-hand side for the right door, in the left-hand side for the left door, press the lock key on the front panel.  
The door is locked to open the door mode is set correctly.
3. Motor torque [low] This option has low, medium and high three gear lock installed on the sliding door set to [low] can be set according to the actual situation themselves.
4. Reversal time [400] This option is [100-900] ms range per press to change 50ms through the digital keys "5" and "8" can be entered. Press "5" to increment up to 900ms, press "8" to decrement down to 100ms. After

setting, press “\*” to return to the main interface; this option can be set to 400 ms by default

Note: In operation, press “←” to return to the previous level of factory menu until you completely exit the setting interface; after adding administrator, press “8 & 8°” to disable the factory setting function.

## 2. Restore factory setting

Method 1; Restore the factory settings by pressing the Lock button and Unlock button at the same time for 6 seconds and confirm by pressing the “#” button on the front pane.

After the completion of the initialization, the voice prompts “initialization success” and all the contents are cleared (Note: the record information will not be cleared);

After initialization, any fingerprint, card, password (123456) can be unlocked.

Method 2: Enter the setting menu operation

- By “0” + “#” keys, verify that the administrator password, enter the main menu of settings;
- Press the number key “1°” and select “Administrator Settings”. the main interface is as follows

1. Enter administrator 2. Modify administrator 3.Delete administrator 4. Restore factory settings

- Press the numeric key “4”, select ‘restore factory settings’, press the “#” button to confirm, the machine will beep and the system will start to initialize.

**Note:** After initialization, the system time remains unchanged, and the record information will not be cleared.

## Administrator Settings

There are 9 administrators, any one of fingerprint, card or password, the first number is administrator 001–009. You can add administrator by the following two methods:

Method 1: Enter the setting menu through the “Setting” button; Short press the “Setup” button, prompt “Please enter administrator information”; (the following operation is the same as method 2)

Method 2: Press “0° + “#” button to enter the setting menu;

- Press “0” + “#” button, and then prompt “Please input administrator information”;

◆ After successful administrator verification, enter the main interface of the system.

The main interface of the system, voice prompts:

1. Administrator settings
2. System settings
3. Common user settings
4. Statistics and records

◆ Select the number “1” for administrator setting

1. Enter administrator
2. delete administrator
3. modify administrator
4. restore factory settings.

**Note:** When the administrator is not entered, the original password is 123456, only the original password can enter the main interface of the system.

#### 1. Enter the administrator:

- ◆ In the administrator setting interface, enter the number “1”.
- ◆ Enter the administrator number, 001-009 any- one, or directly press the confirmation key to default number;
- ◆ Enter the administrator or user information (fingerprint, password or card);

**Note:** You can enter in a cycle, 10S do not operate directly out of the system settings or press the “\*” key to return previous – level menu until exit. operation failure need to enter the user number, in the input number interface, can not be entered with; enter the password must be more than six figure.

#### 2. Modify administrator

- ◆ In the administrator setting interface, enter the number “2” to modify the administrator information. Voice prompt: Please enter the modification number
- ◆ Enter the administrator number that needs to be modified (001-009)
- ◆ Enter the new user information.

**Note:** After modifying the administrator information, the modified administrator information will be deleted, and the administrator currently in use cannot be modified.

#### 3. Delete administrator

- ◆ In the administrator setting interface, input the number “3” Voice prompt: Please input the deletion number
- ◆ Directly delete the administrator number (001-009)
- ◆ Voice prompt “Delete successfully”.

**Note:** The administrator currently in use cannot be deleted.

#### 4. Restore the factory settings to restore the factory settings state

### General user settings

(press 2 to enter the general user settings after entering the system)

1. Enter common user (same as entering administrator)
2. Modify common user (same as modify administrator)
3. Delete common user (in the common user setting interface, enter ‘3’ key)

Interface: 1. Delete by number 2. Delete by type 3.

Delete all Deleting by number is the same as that of the administrator.

Delete by type in this interface, enter ‘Z’ key.

Interface: 1.Delete all fingerprints 2.Delete all cards 3. Delete all passwords

Delete all fingerprints: Press ‘1’ key to delete fingerprint.

Delete all cards: Press “2” key to delete all cards.

Delete all passwords: Press “3” key to delete password

Delete all users: In the general user setting screen, enter ‘3’ key. Interface: Delete all users

### Manage wireless users

(In the general user settings screen, enter ‘1’ key)

**Interface:**

1. Enter remote user
2. Delete remote user



3. Enter remote user
4. Delete remote user

1. Enter remote user (need to install wireless module) under this interface, enter '1' key. Interface: 1.WIFI mode 2 Hotspot mode; Press '2'key to add cell phone users with the hotspot issued by the module; refer to "Article 14 WI-FI Operation Instructions" for the specific operation;
2. Delete remote users in this interface, enter the '2' key to delete all cell phone users;
3. Add remote user (need to install remote module) In this interface, input '3' key, aim at the smart lock, press any-key on the remote control, you can add remote users, voice prompt "operation success".
4. Delete remote control user (need to install remote control module) In this interface, input '4' key, it will delete all remote control users.

## System setting

(Under the main interface of system, input '3' key)

Voice prompt:

1. time setting
2. verification mode setting
3. door opening function setting
4. language volume setting

1. Time setting (under this interface, input '1' key, you can set the time and date) Press the numeric keys directly to input the current time, and finally press the '#' key to confirm;
2. Verification mode setting (under this interface, input '2' key) Voice prompt: 1 enable single unlocking V 2 enable combination unlocking Single-unlock: select the number "1" to enable the single-unlock mode Combination unlock: select the number "2" to enable the combination of unlocking mode

**Note:** combination unlocking means that in addition to the administrator, all common users must be verified by two common users to open the door.

3. Open the door function setting (under the current surface, enter the '3' key)

Interface:

1. lock time [4s] 2. time delay lock [off] 3. anti-pry switch [off] 4. card unlock [on]

Select '1' key, you can adjust the locking time 2s. \_9S; (This setting can be set to keep the lock open for a long time) Select '2' key to turn on the delayed locking time, which can be selected by the '2' key; Press the '2' key to select: Off, 5s, 10s, 15s, 20s, 25s, 30s(this setting can set the time to automatically lock again after the lock is opened) Select '3' key, open the anti-pry switch, release the anti-pry switch, the interface shows: 'system has been locked'; then the siren sounded 30S after stopping, the system timing 180S during the administrator can verify, verify the success of the alarm can be lifted, unless the anti-pry switch is touched again. Otherwise, the alarm will not sound; you can choose to open the anti-pry switch and close the anti-pry switch in turn; Select '4' key, you can choose to open the card unlock or close the card unlock, close the card unlock, open the door with the card or enter the card user.When the card is closed, the system will beep two times and the interface will show 'card open is disabled';

**Note:** When the system is restored to factory settings, the interface settings will not be changed except for the locking time, the other three systems have default:

2. time delay lock [off] 3 .anti-pry switch [off] 4. card open lock [on] 4. Language Volume

This interface, enter the '4' key, interface:

1. Chinese 2. English
3. volume low
4. volume high Chinese mode: select the number 1", enter the Chinese mode English mode: select the number "2", enter the English mode Volume low: select the number '3\*', prompt the voice set to low volume High volume: select the number "4", prompt the voice to set to high volume

## Data statistics

(under the main interface of the system, enter '4' key) Display:"

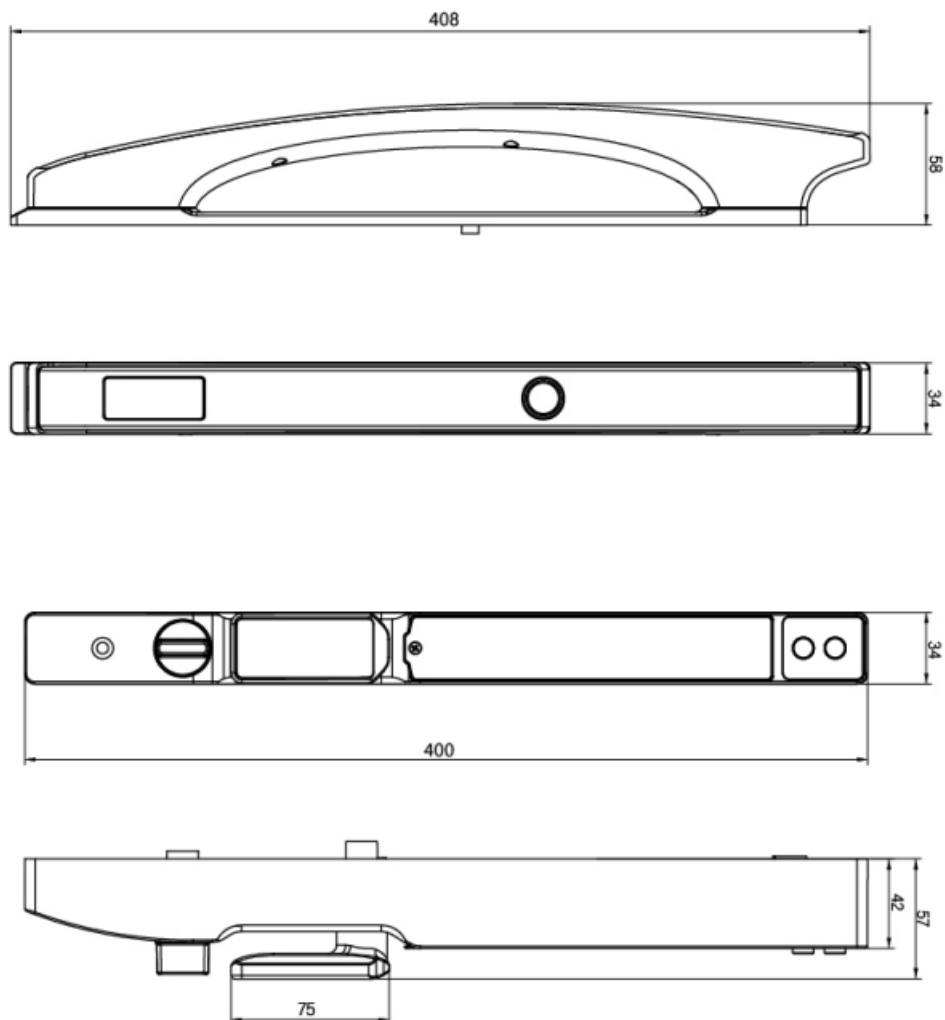
- 1 .open door record query 2. storage information statistics 3. delete record information

1. Open door record query (select IT, you can query the open door record) Display: 1. Query by order 2 Query by time Query by order: in the door record query interface, select the number key 1', you can press "s" "8' up and down to turn the page. Query by time: In the door record query interface, select the number key "2', you can press "5" 'In Page up and down Display: Please enter the time 20—Year—Month—Day Enter the desired (correct) time.
2. Storage information statistics (select button '2") Display: 1. Administrator statistics 2. General user statistics Administrator statistics Fingerprint 001 Card: 001 . FP:001 Card:001 Password: 001 PW:001 Total usage: 003 Total:003 Remaining balance: 006 Remain:006 General user statistics Fingerprint 000 Card: 0000 FP:001 Card:001 Password: 000 PW:001 Total usage: 000 Total:003 Remaining balance: 291 Remain:288
3. Delete record information (select "3", the system displays "Please confirm' and " Exit # Confirm") Select V' to clear all record information. Select "o", then return to the upper – level interface, the record information is still saved Note: Record information can not be deleted as a single item, but can only be emptied.

## List of accessories

No.	Name	Quantity	Unit	Remarks
1	Front Panel	1	PCS	
2	Rear Panel	1	PCS	
3	Lock Body	1	PCS	
4	Lockbody fasteners	1	PCS	
5	Silicon pad	2	PCS	
6	Lockcylinder	1	PCS	Two keys
7	7.8*7.8X120mm squaresteel	1	Item	ScrewPack
8	Internal and external teeth m5x35 screw tube	2	Item	
9	M5X12 Phillips set screw	1	PCS	
10	M5*M4X35 screw tube	1	PCS	
11	M5X90 Phillips countersunk head screws	2	PCS	
12	M4X45 Phillips countersunk head screws	1	PCS	
13	ST4.2X25 Phillips countersunk head tapping screws	5	PCS	
14	M4X6 Phillips countersunk head screws ( black )	2	PCS	
15	M10 silicone screw plug	2		
16	Warranty Card	1	Sheet	
17	USB charging cable	1	PCS	
18	Hole opening diagram	1	Sheet	

## Product size



## Warranty card

Dear users, first of all, thanks for choosing our company's products, in order to make you are more satisfied with our services. Please read, fill in, and save this warranty card.

User name:

Contact No:

Contact address:

Product model:

Product color:

Purchase date:

Dealer name:

Contact No.:

Contact address:

## Documents / Resources

	<p><a href="#">Lock Lock G05 Automatic Narrow Body Smart Lock fingerprint</a> [pdf] User Manual  G05 Automatic Narrow Body Smart Lock fingerprint, G05, Automatic Narrow Body Smart Lock f  ingerprint, Narrow Body Smart Lock fingerprint, Body Smart Lock fingerprint, Smart Lock finger  print, Lock fingerprint, fingerprint</p>
--	--