

LOCINOX

LOCINOX
LMKQ30V2
Surface Mounted
Mechanical Code
Lock



LOCINOX LMKQ30V2 Surface Mounted Mechanical Code Lock Installation Guide

[Home](#) » [LOCINOX](#) » LOCINOX LMKQ30V2 Surface Mounted Mechanical Code Lock Installation Guide 

Contents

- [1 LOCINOX LMKQ30V2 Surface Mounted Mechanical Code Lock](#)
- [2 Product Usage Instructions](#)
- [3 TOOLS](#)
- [4 Instructions](#)
- [5 Installation](#)
- [6 Documents / Resources](#)
 - [6.1 References](#)
- [7 Related Posts](#)

LOCINOX[®]

LOCINOX LMKQ30V2 Surface Mounted Mechanical Code Lock



Product Specifications

- Brand: Locinox
- Model: VINCI LMKQV2
- Hex Key Sizes: 6mm, 3mm
- Dimensions: 120mm x 60mm x 20mm
- Weight: 140mm

Product Usage Instructions

Pre-Installation Steps

Before starting the installation, ensure you have all the necessary tools including a 6mm and 3mm hex key.

Installation Process

1. Position the product at the desired location on the gate or door.
2. Use the 6mm hex key to secure the main body of the product in place.
3. Attach any additional components using the 3mm hex key as needed.
4. Verify that the product is securely installed and aligned properly.

Post-Installation Checks

After installation, test the functionality of the product by operating it multiple times to ensure smooth operation.

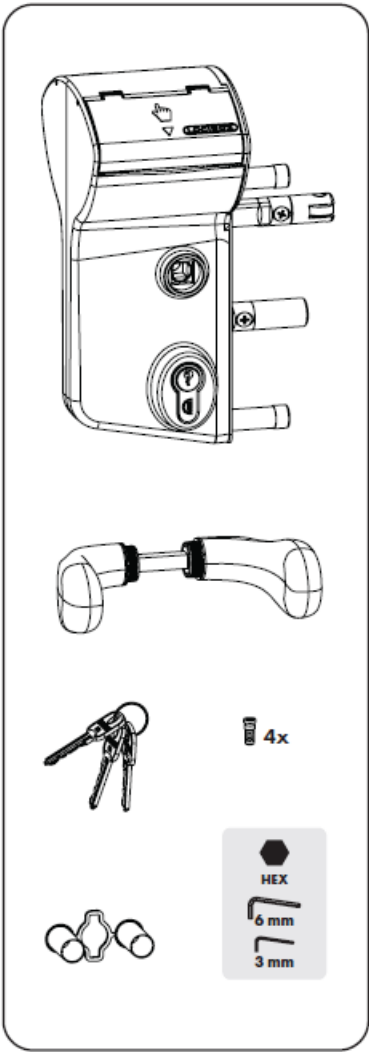
Frequently Asked Questions (FAQ)

What should I do if the product is not functioning correctly after installation?

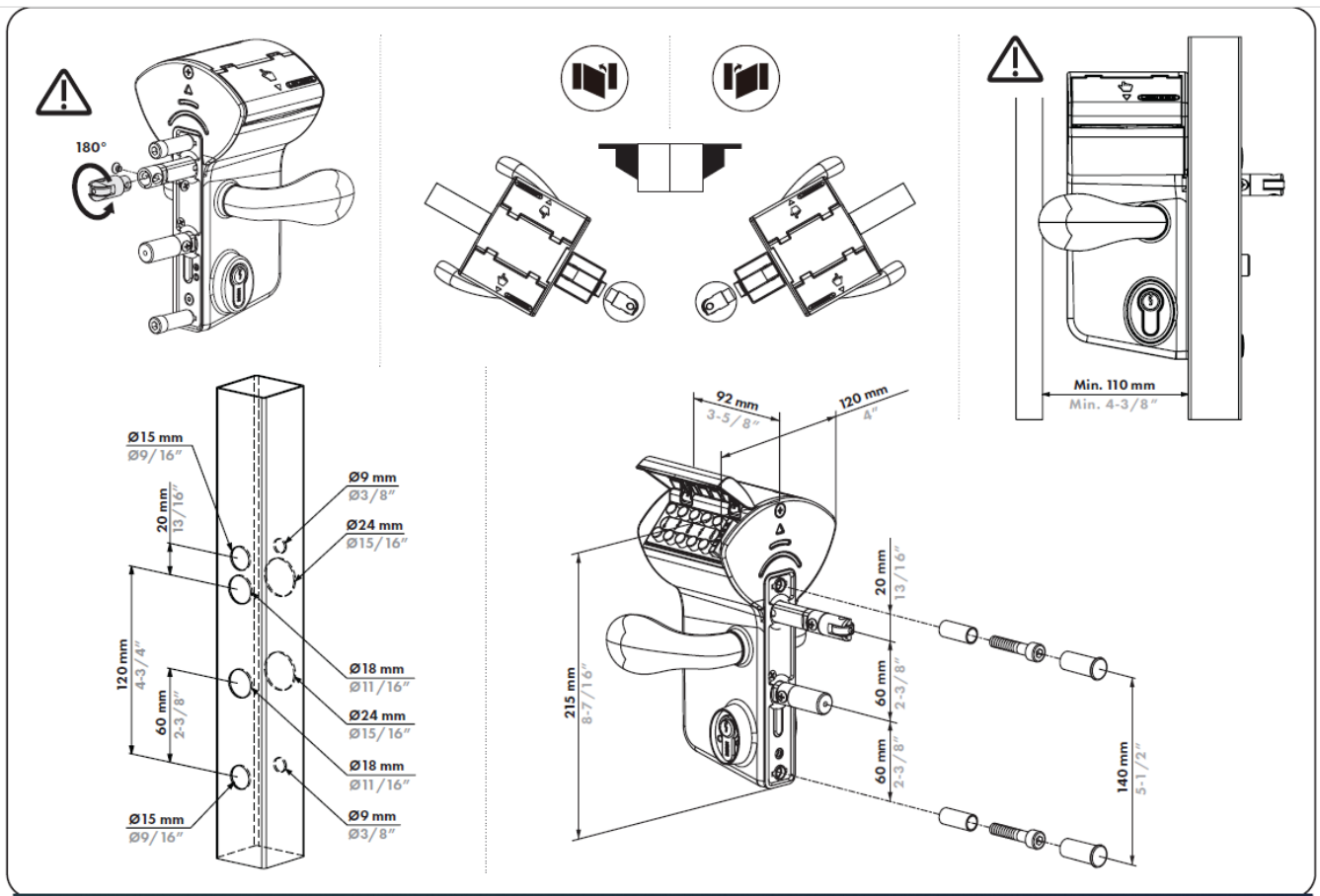
A: If you encounter any issues with the product post-installation, please contact Locinox customer support for

assistance.

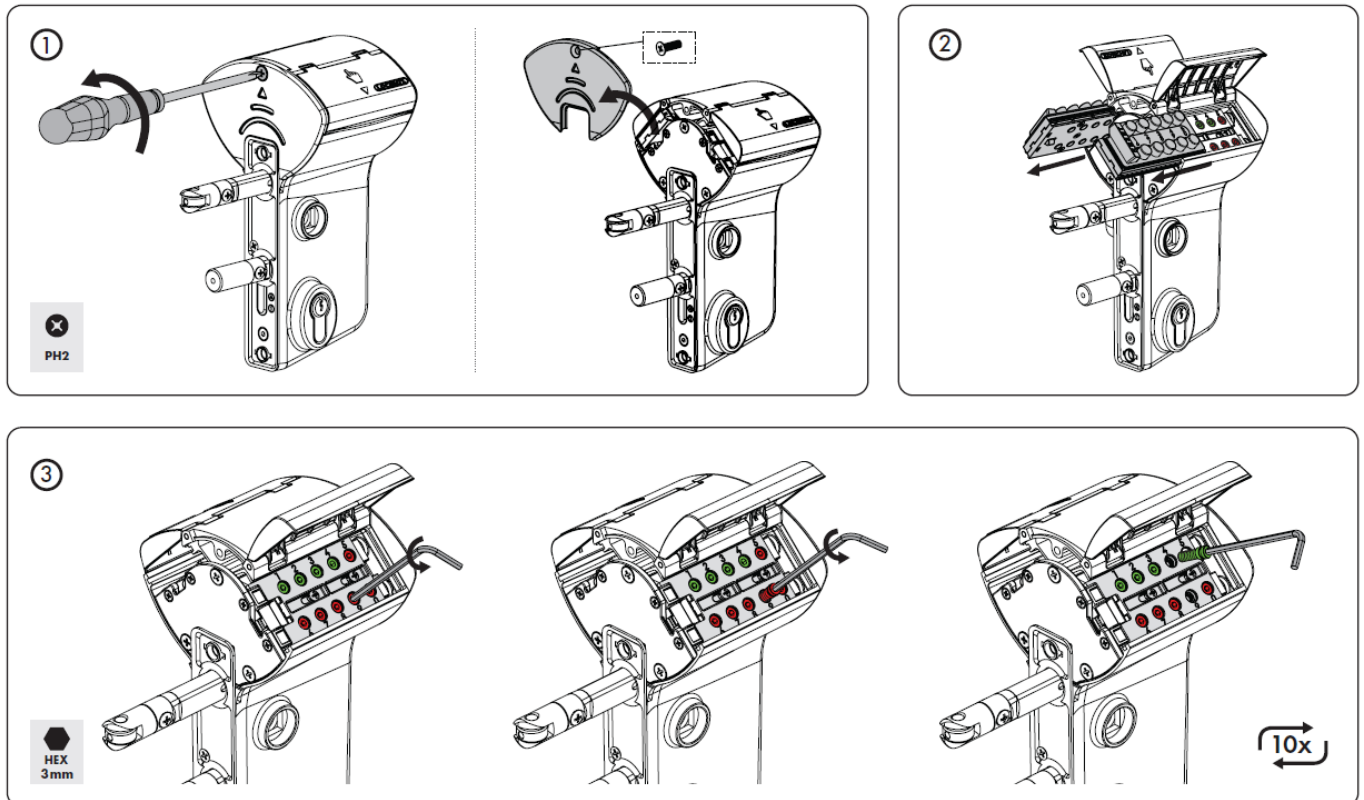
TOOLS

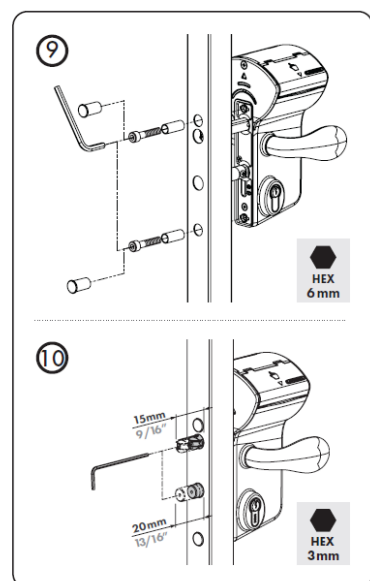
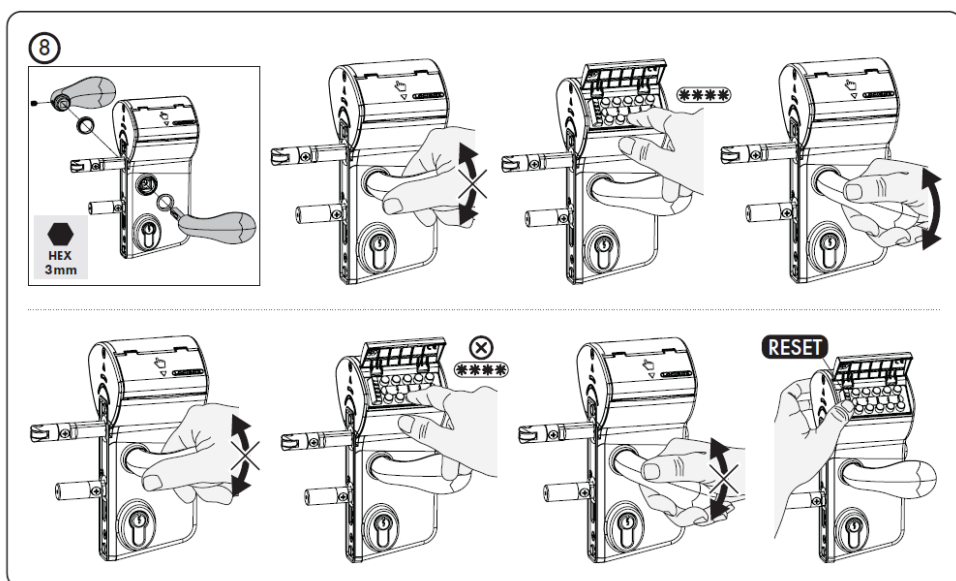
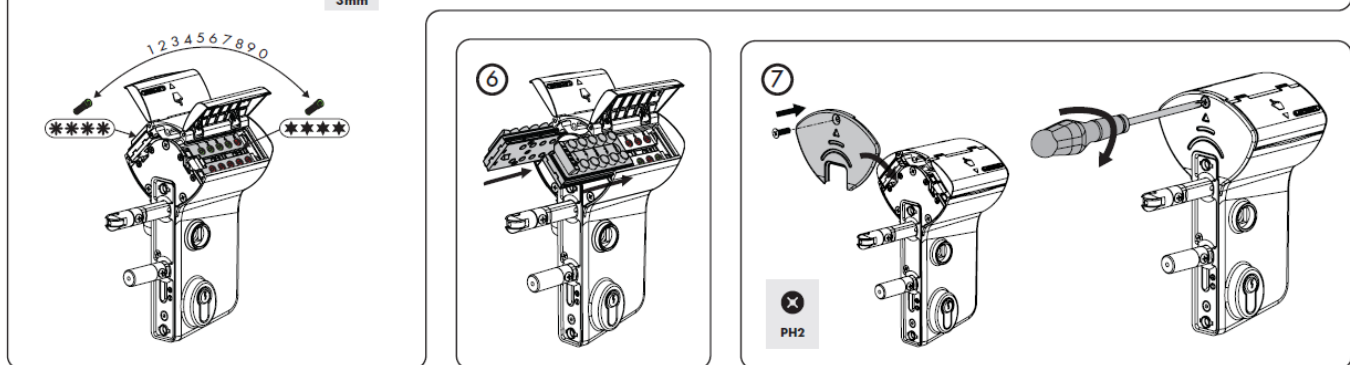
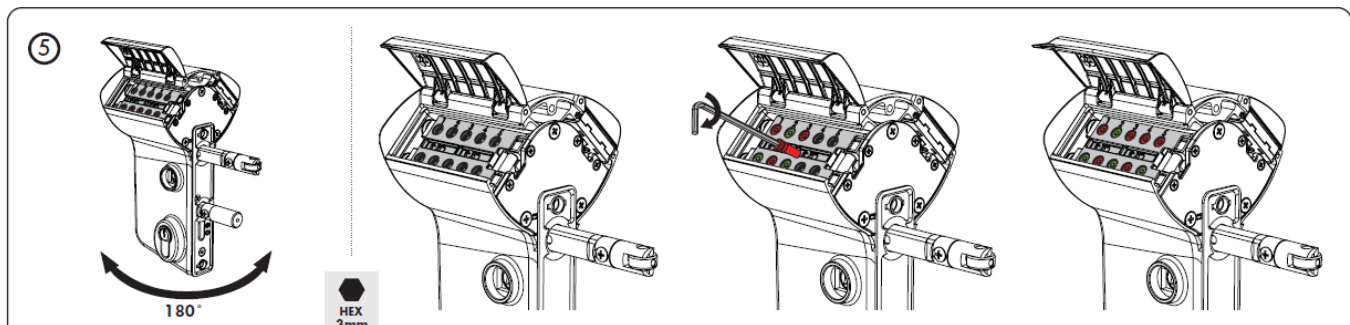
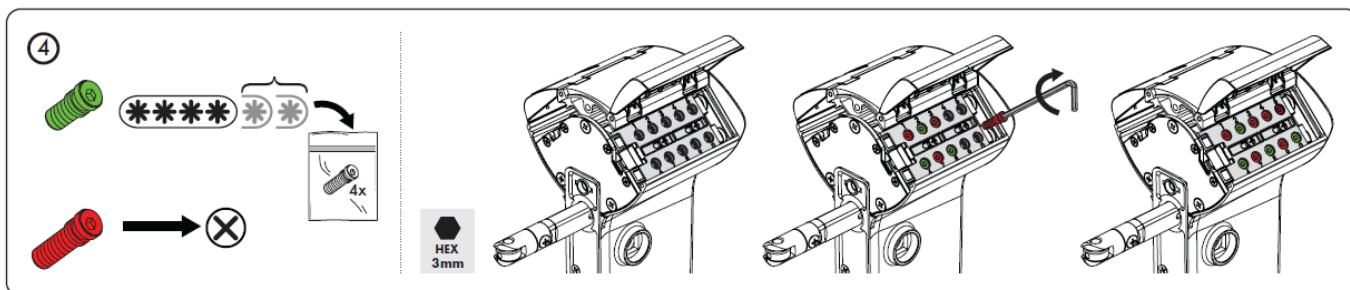


Instructions



Installation





SUCCESSFUL INSTALLATION?

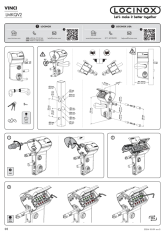
Please send us your pictures & videos

pictures@locinox.com

Doc. N°: P00033668

Locinox NV • Brabantstraat 107 • 8790 Waregem • Belgium

Documents / Resources



[LOCINOX LMKQ30V2 Surface Mounted Mechanical Code Lock](#) [pdf] Installation Guide LMKQ30V2, LVSZC-9005, LMKQ30V2 Surface Mounted Mechanical Code Lock, LMKQ30V2, Surface Mounted Mechanical Code Lock, Mounted Mechanical Code Lock, Mechanical Code Lock, Code Lock

References

- [User Manual](#)

Manuals+, Privacy Policy

This website is an independent publication and is neither affiliated with nor endorsed by any of the trademark owners. The "Bluetooth®" word mark and logos are registered trademarks owned by Bluetooth SIG, Inc. The "Wi-Fi®" word mark and logos are registered trademarks owned by the Wi-Fi Alliance. Any use of these marks on this website does not imply any affiliation with or endorsement.