

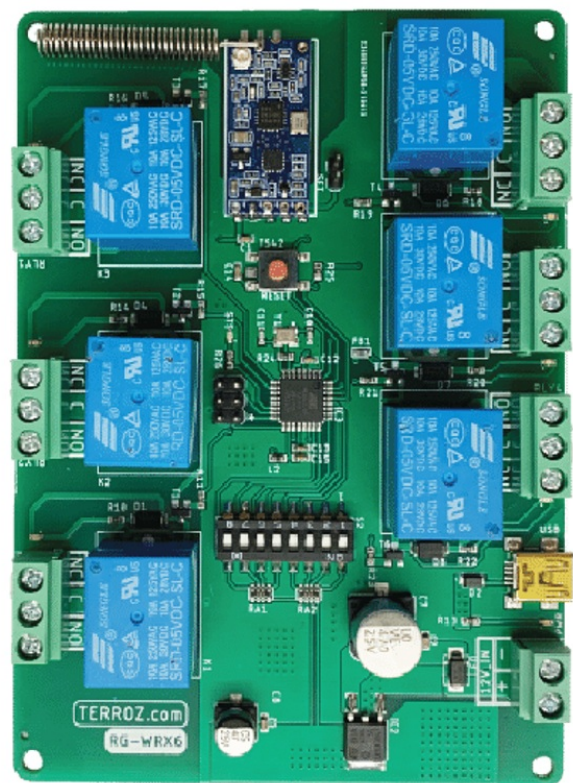
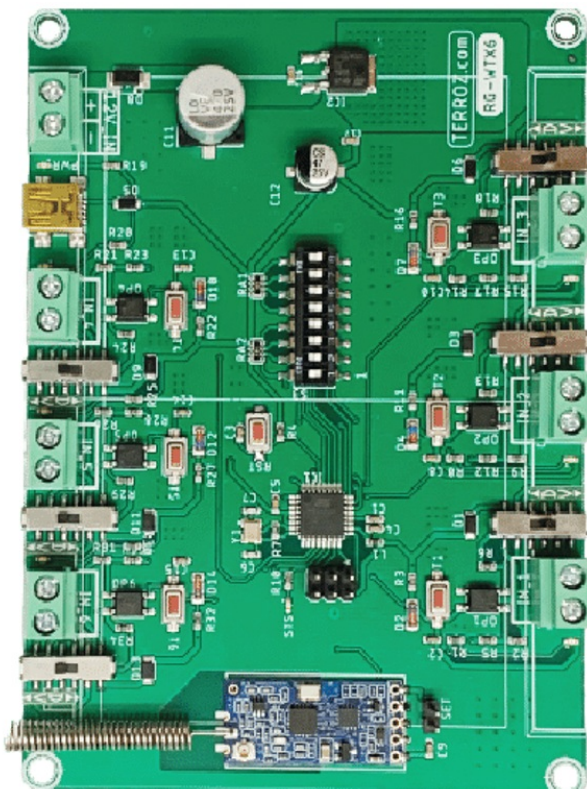


LobiBox K-SIG 6 Channel Wireless Transmitter and Receiver User Guide

[Home](#) » [LobiBox](#) » LobiBox K-SIG 6 Channel Wireless Transmitter and Receiver User Guide 

LobiBox

K-SIG
BY LOBIBO



6 CHANNEL WIRELESS
TRANSMITTER & RECEIVE



APRIL 26 2022

Introducing the newest line of products by LobiBox.

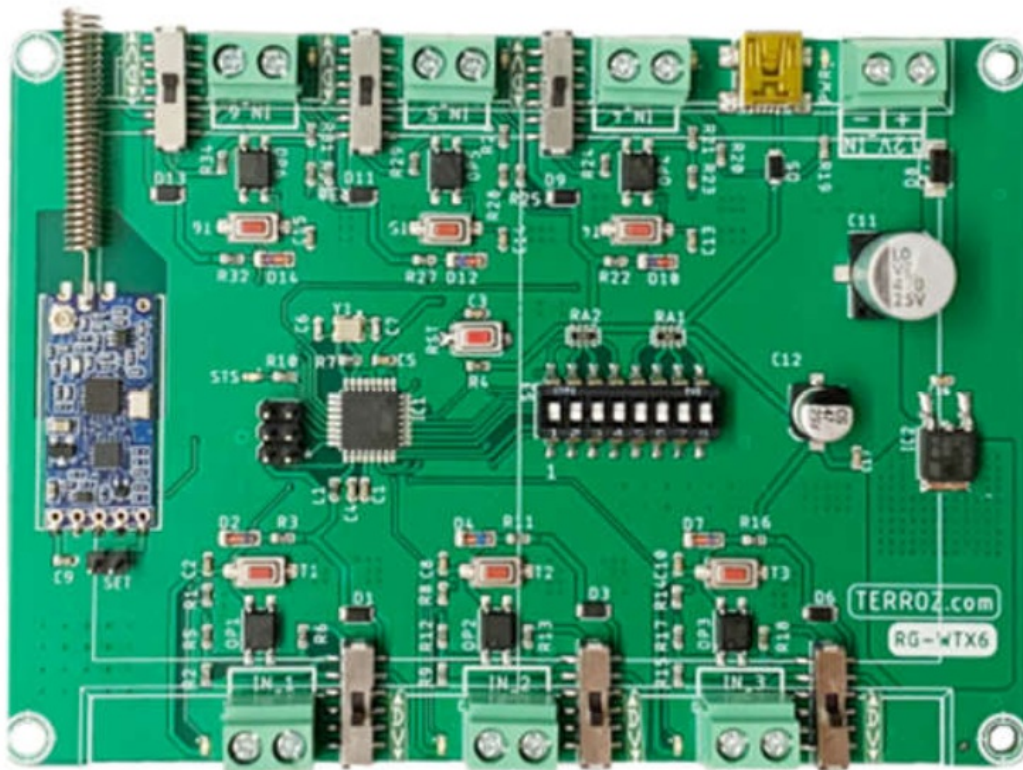
Chris Pryor – Technical Specialist

Contents

- 1 TRANSMITTER – 6-CHANNEL WIRELESS
- 2 TRANSMITTER COMPONENT
- 3 RECEIVER – 6-CHANNEL WIRELESS
- 4 RECEIVER COMPONENTS
- 5 ANTENNA COMPONENTS (OPTIONAL)
- 6 USE CASE 1
- 7 USE CASE 2
- 8 Documents / Resources
- 9 Related Posts

TRANSMITTER – 6-CHANNEL WIRELESS

Part #: KSIG-WLS-TX

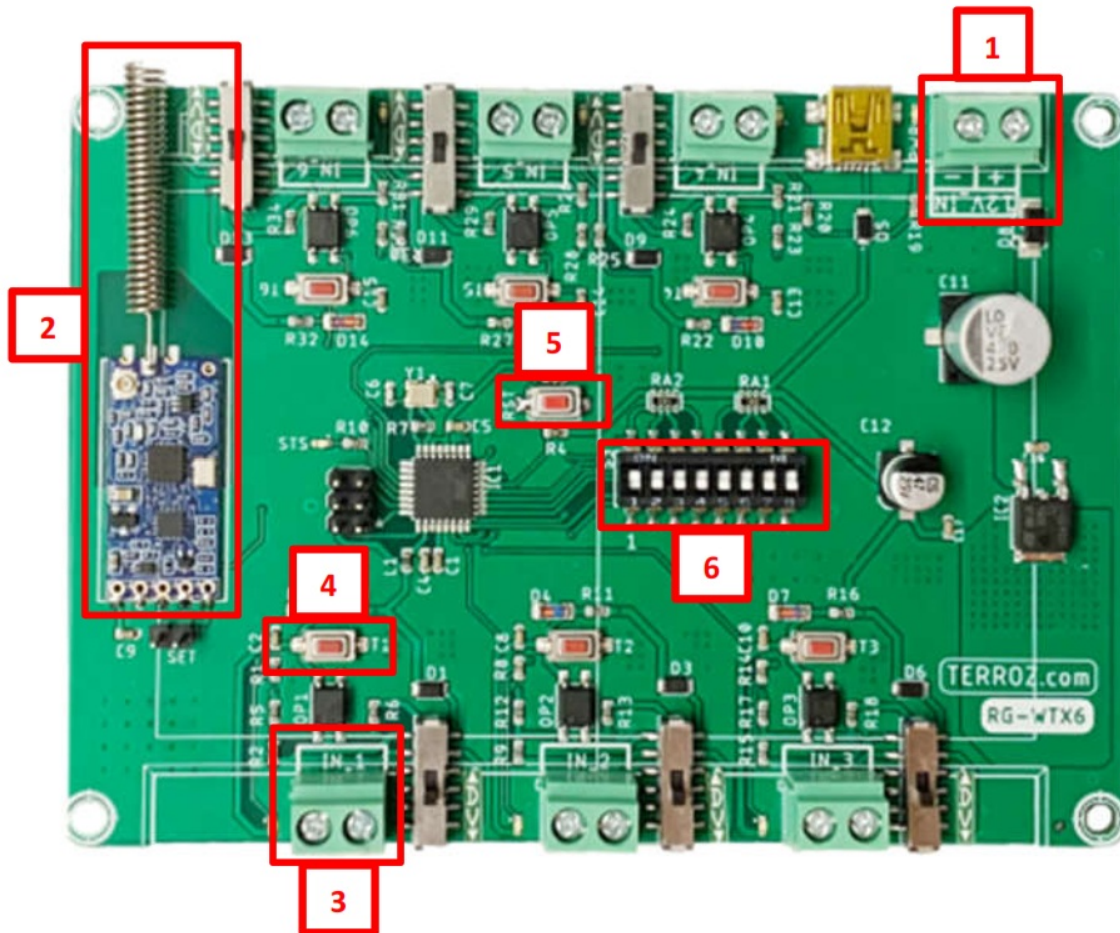


1. Addressable Dip Switch: Set the Receiver to the same address
2. Inputs: Dry contact ONLY
3. Input Power: 12VDC to 24VDC
4. Line of Sight: 300 yards

- a. One mile (with extended range antenna)
- 5. Frequency: 433Mhz

**** Do not place in metal containers unless antenna protrudes ***

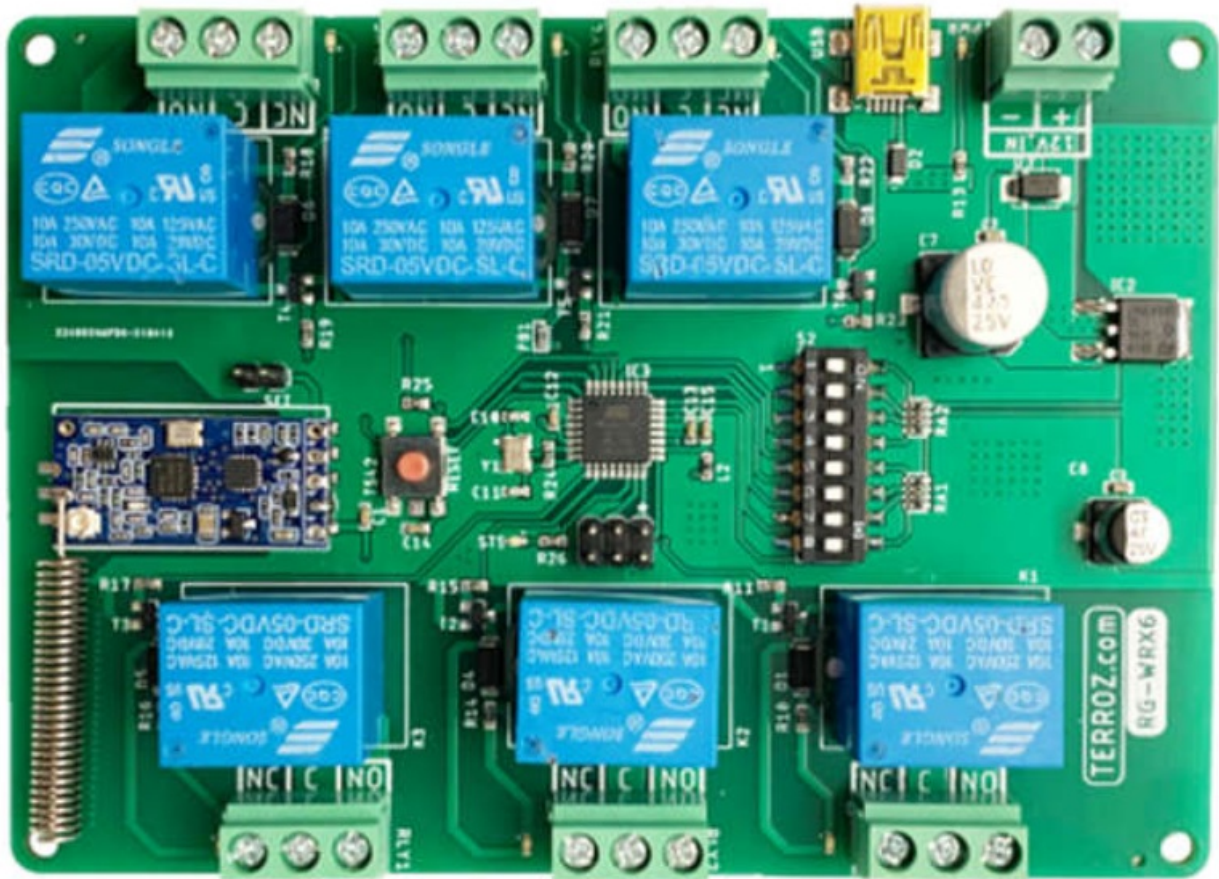
TRANSMITTER COMPONENT



- 1. Power
 - a. Power IN +
 - b. Power IN –
- 2. Antenna
 - a. U.FL connector
- 3. Output from your device (IN 1 – IN 6)
 - a. Motion, Beam, Switch, etc.
- 4. Input Trigger Test Button
- 5. Reset Button
- 6. Addressable Dip Switch

RECEIVER – 6-CHANNEL WIRELESS

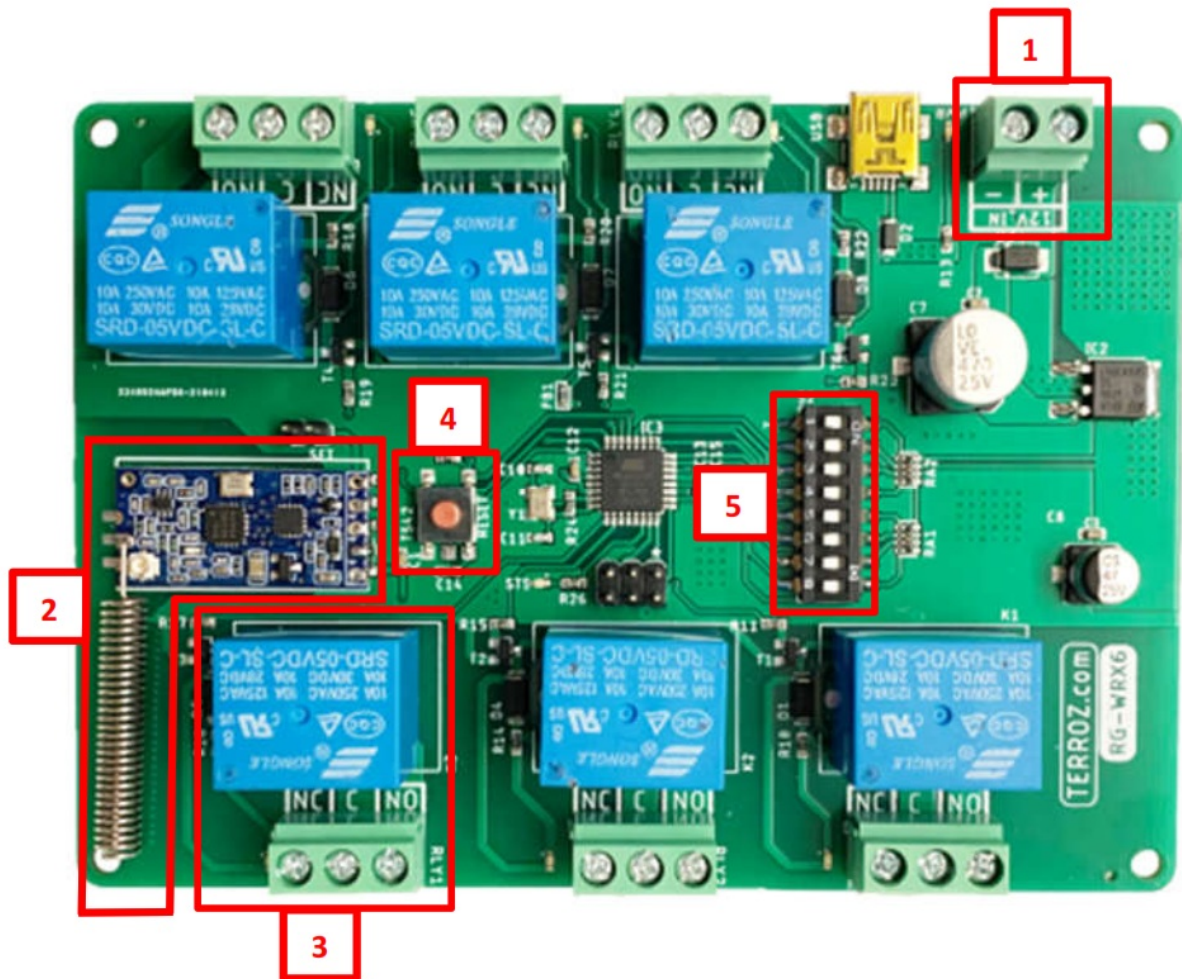
Part #: KSIG-WLS-RX6



1. Addressable Dip Switch: Set Transmitter to the same address
2. Outputs: Contact Rating – 250VAC 10A/28VDC 10A
 - a. Form C Relays (Common, Normally Open, Normally Closed)
3. Input Power: 12VDC to 24VDC
4. Line of Sight: 300 yards
 - a. One mile (with extended range antenna)
5. Frequency: 433Mhz

**** Do not place in metal containers unless antenna protrudes ****

RECEIVER COMPONENTS



1. Power
 - a. Power IN +
 - b. Power IN –
2. Antenna
 - a. U.FL connector
3. Form C Relays (RLY 1 – RLY 6)
 - a. Common (C)
 - b. Normally Close (NC)
 - c. Normally Open (NO)
4. Reset Button
5. Addressable Dip Switch

ANTENNA COMPONENTS (OPTIONAL)

3dbi Antenna Kit

Part #: KSIG-ANT-3DBI



- (2) U.FL to Female SMA Cable
- Cable Length: 14cm
- (2) 3dbi Antenna
- 300-500m line of sight

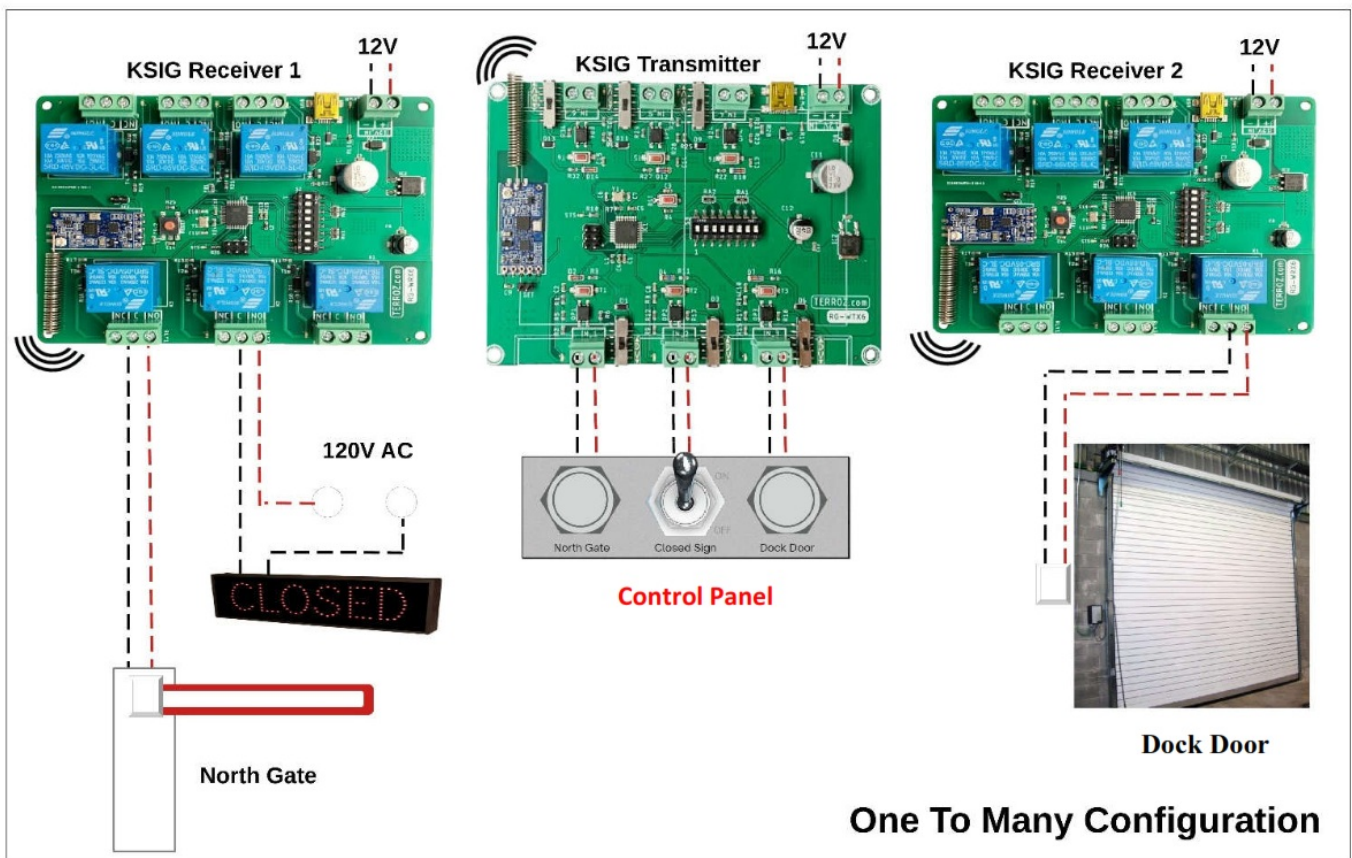
10dbi Antenna Kit

Part #: KSIG-ANT-10DBI



- (2) U.FL to Female SMA Cable
- Cable Length: 300cm
- (2) 10dbi Antenna
- 500-900m line of sight

USE CASE 1



- Control Panel
 - o Transmitter will send a signal to Receiver 1
- Use the push button to open North Gate.
- Use on/off switch for Closed Sign.
 - o Transmitter will send a signal to Receiver 2.
- Use the push button to open the Dock Door.

USE CASE 2

-



[LobiBox K-SIG 6 Channel Wireless Transmitter and Receiver](#) [pdf] User Guide
KSIG-WLS-TX6, K-SIG, 6 Channel Wireless Transmitter and Receiver, K-SIG 6 Channel Wireless Transmitter and Receiver