

Contents [[hide](#)]

- [1 LNC HOME A04908 Ceiling Light Fixture](#)
- [2 Specifications](#)
- [3 PARTS](#)
- [4 ASSEMBLY & INSTALLATION INSTRUCTIONS](#)
- [5 FAQs](#)
- [6 Documents / Resources](#)
 - [6.1 References](#)

LNCHOME

LNC HOME A04908 Ceiling Light Fixture



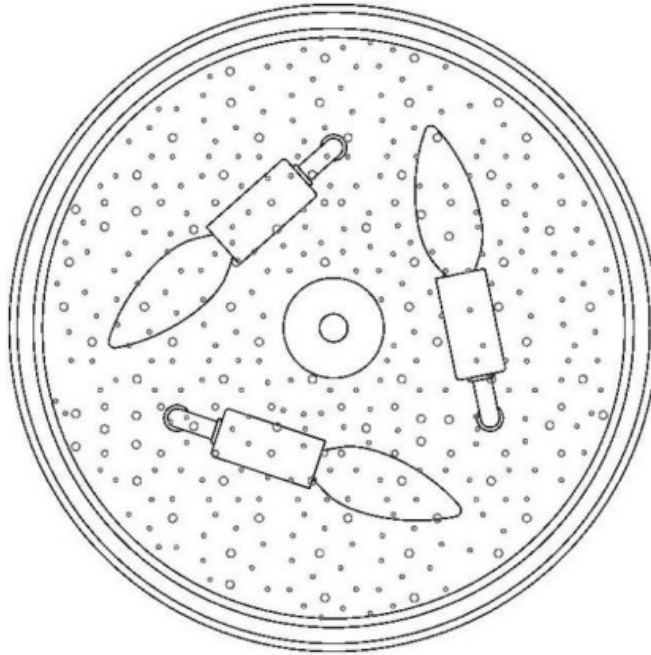
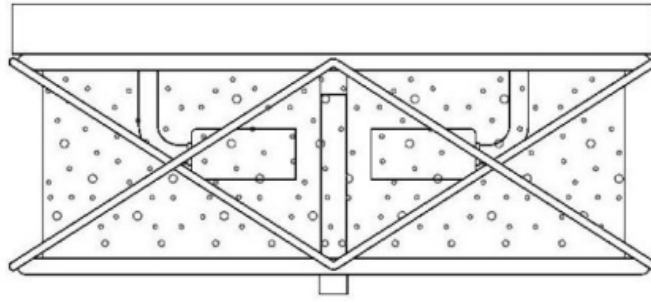
Specifications

- **Item Number:** A04908
- **Voltage:** 120V
- **Max Wattage:** Type B, Max 40W per bulb

WARNING (To reduce the risk of fire, electric shock, or personal injury):

1. We suggest installation by a licensed electrician.
2. Please read the instructions carefully and save them, as you may need them at a later time.
3. Before you start, NEVER attempt any work without shutting off the electricity until the work is done.
 - Go to the main fuse, or circuit breaker, box in your home. Place the main power switch in the “OFF” position.
 - Place the wall switch in the “OFF” position.
4. Mounting surface should be clean, dry, flat, strong enough and 1/4” larger than the canopy on all sides. Any gaps between the mounting surface and canopy exceeding 3/16” should be corrected as required.
5. Make sure that the ceiling or wall can stand the weight of the lamp before installation.
6. Make sure the voltage you are using is 120V. The maximum wattage is Type B, Max 40W per bulb.
7. Keep the lamp away from acidic and alkaline substances in case of damaging the surface of the lamp.
8. When replacing bulbs, you should turn off or unplug the lamp, and you must wait until it is cool as bulbs get hot quickly.
9. The safety instructions appearing in this manual are not meant to cover all possible conditions that may occur. It must be understood that common sense, caution and care must be used with any electrical products.

IMAGE FOR FINISHED PRODUCT

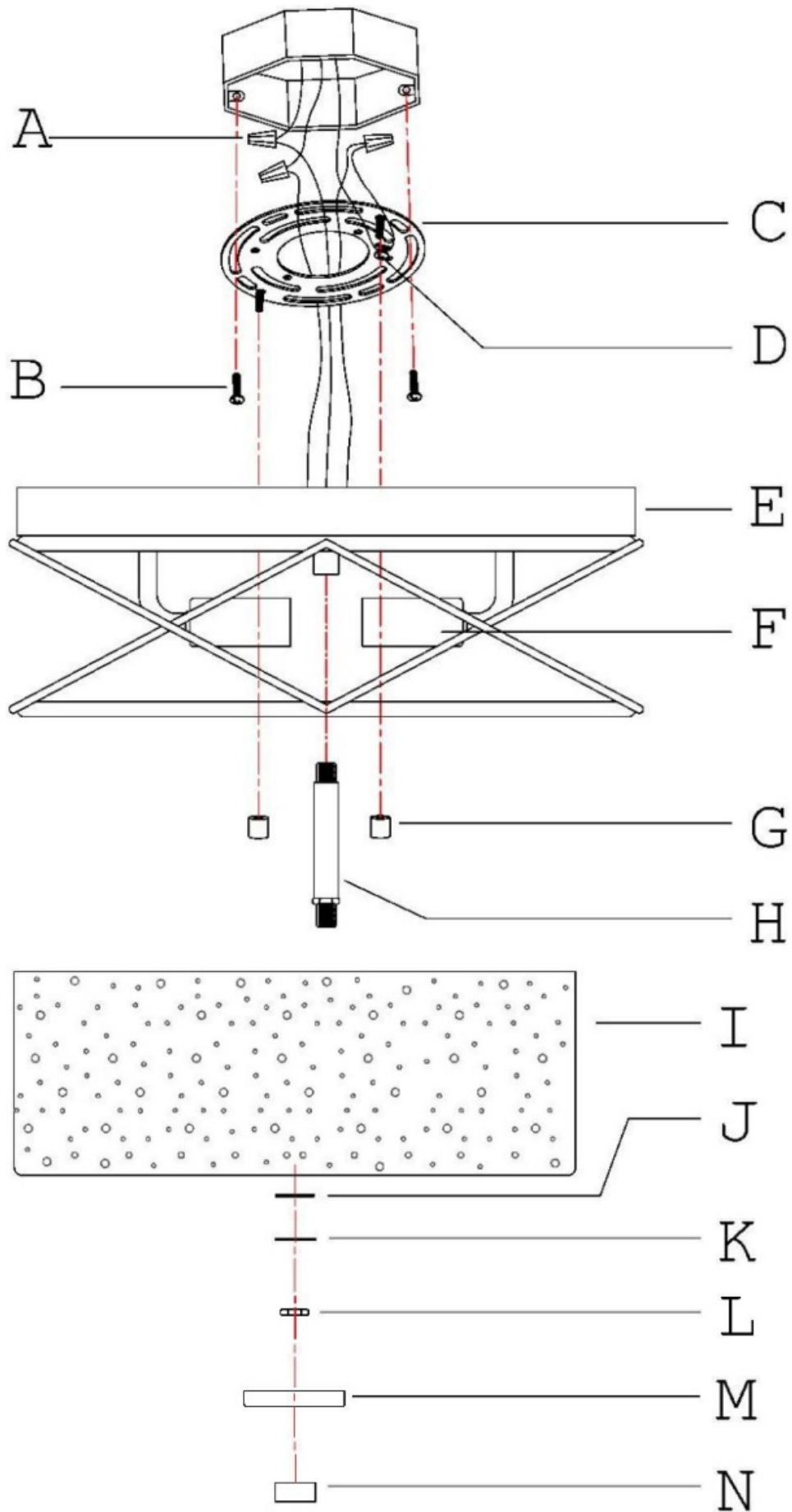


TOOLS REQUIRED (NOT INCLUDED):

Before starting assembly and installation, please prepare the needed tools as picture below

PARTS

OUTLET BOX



ACCESSORIES & QTY ENCLOSED:

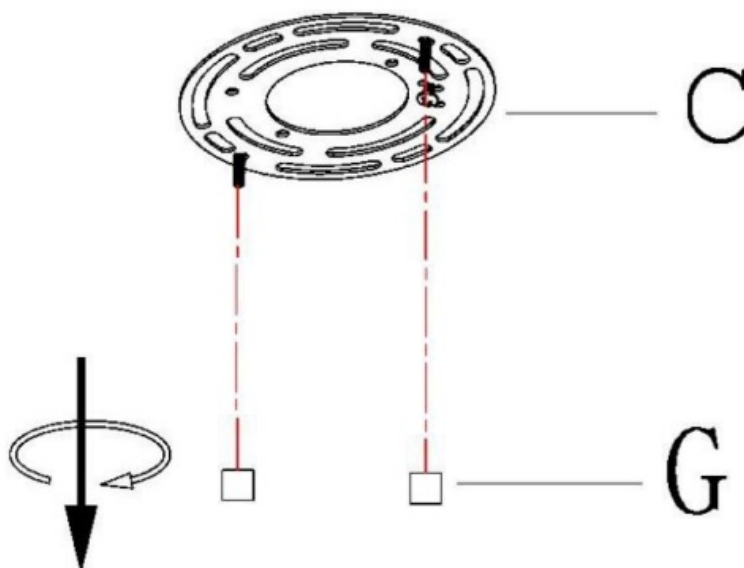
- **(A)** Plastic wire connector (3)
- **(B)** Mounting screw (2)

PARTS TYPE & QTY INCLUDING:

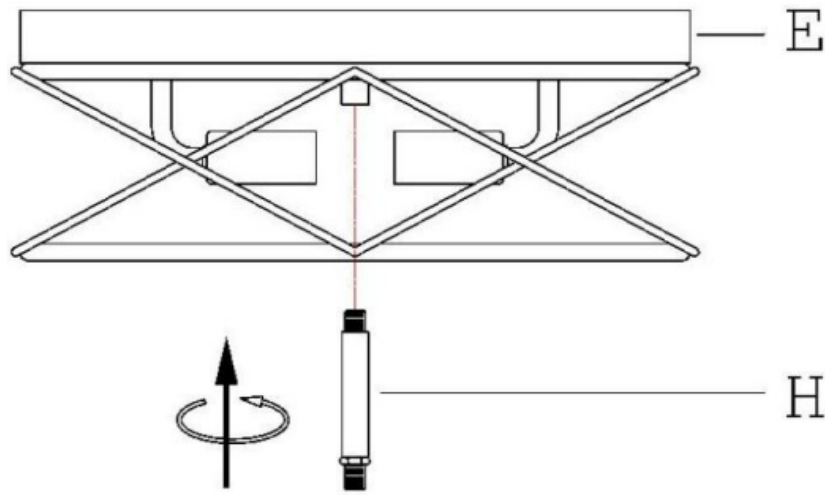
- **(C)** Mounting plate (1)
- **(D)** Green ground screw (1)
- **(E)** Canopy (1)
- **(F)** Socket (3)
- **(G)** Knob nut (2)
- **(H)** Tube (1)
- **(I)** Glass shade (1)
- **(J)** Plastic washer (1)
- **(K)** Iron washer (1)
- **(L)** Hex nut (2)
- **(M)** Flat cover (1)
- **(N)** Flat nut (1)

ASSEMBLY & INSTALLATION INSTRUCTIONS

1. Carefully remove the fixture from the carton and check that all parts and accessories are included as shown in the above illustration.
2. Unscrew knob nuts (G) from mounting plate (C). Set them aside for later installation.



3. Pass the fixture wires through the tube (H) and the canopy (E). Screw tube (H) onto canopy (E) as shown in the illustration.

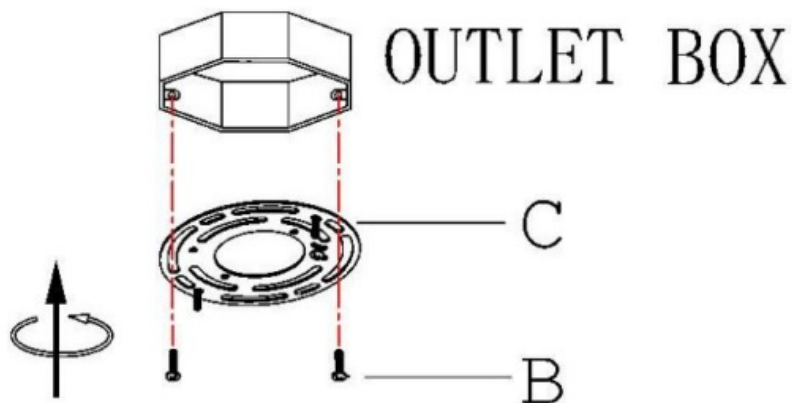


4. Turn off the power

Before you start the installation, NEVER attempt any work without shutting off the electricity until the work is done.

- Go to the main fuse, or circuit breaker, box in your home. Place the main power switch in the “OFF” position.
- Place the wall switch in the “OFF” position.

5. Carefully pass the supply wires through the mounting plate (C). Secure mounting plate (C) to the outlet box with mounting screws (B).

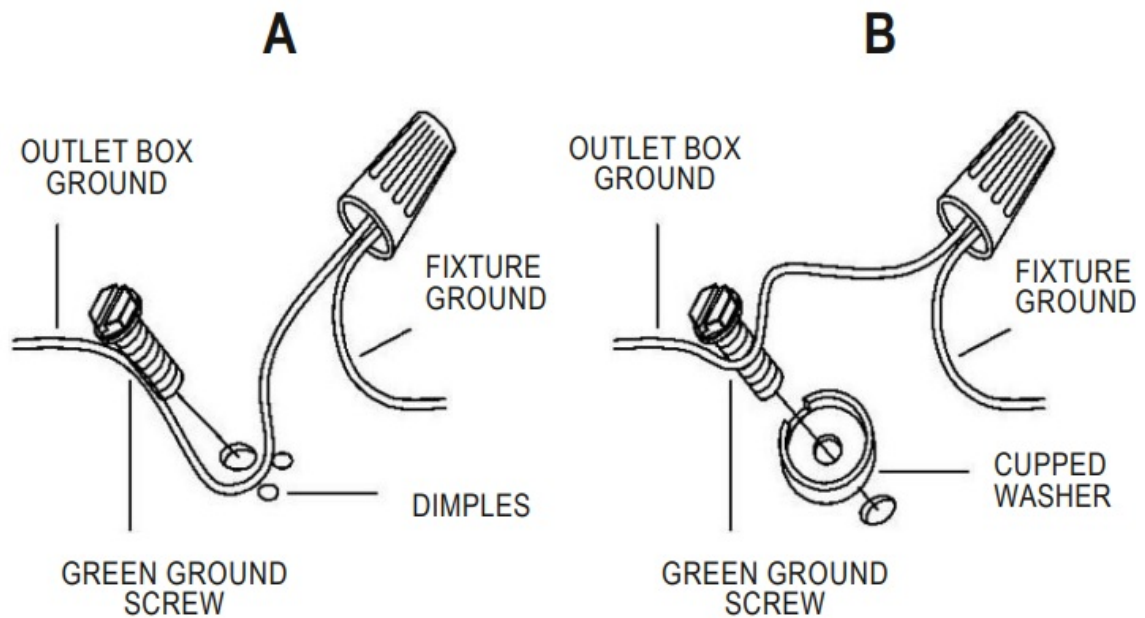


NOTE: The side of the mounting plate (C) marked “GND” must face out.

6. Make wire connections

Connect wires as below wires connection shown. PLEASE NOTE THAT GROUND WIRE IS BARE COPPER WIRE, NEVER CONNECT OTHER WIRES TO GROUND WIRES.

Connect ground wires according to the below chart



Connect wires according to the below chart

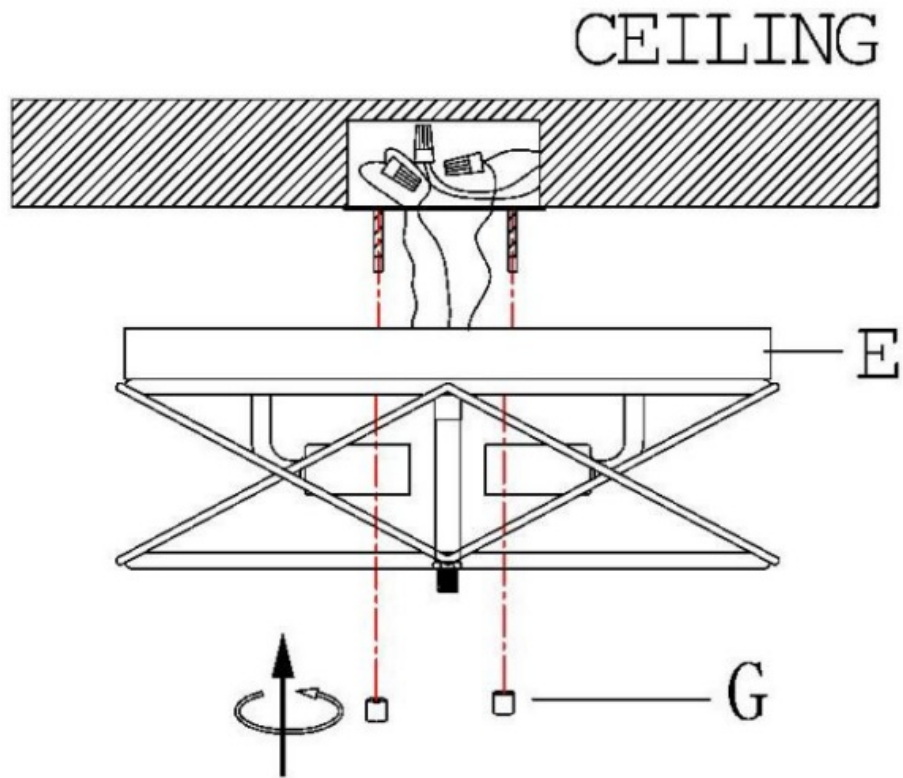
Connect Black or Red Supply Wire to:	Connect White Supply Wire to:
Black	White
*Parallel cord (round & smooth)	*Parallel cord (square & ridged)
Clear, Brown, Gold or Black without tracer	Clear, Brown, Gold or Black with tracer
Insulated wire(other than green) with copper conductor	Insulated wire(other than green) with silver conductor

Neutral Wire

Note: When parallel wires (SPT I & SPT II) are used. The neutral wire is square-shaped or ridged, and the other wire will be round in shape or smooth (see illu.)

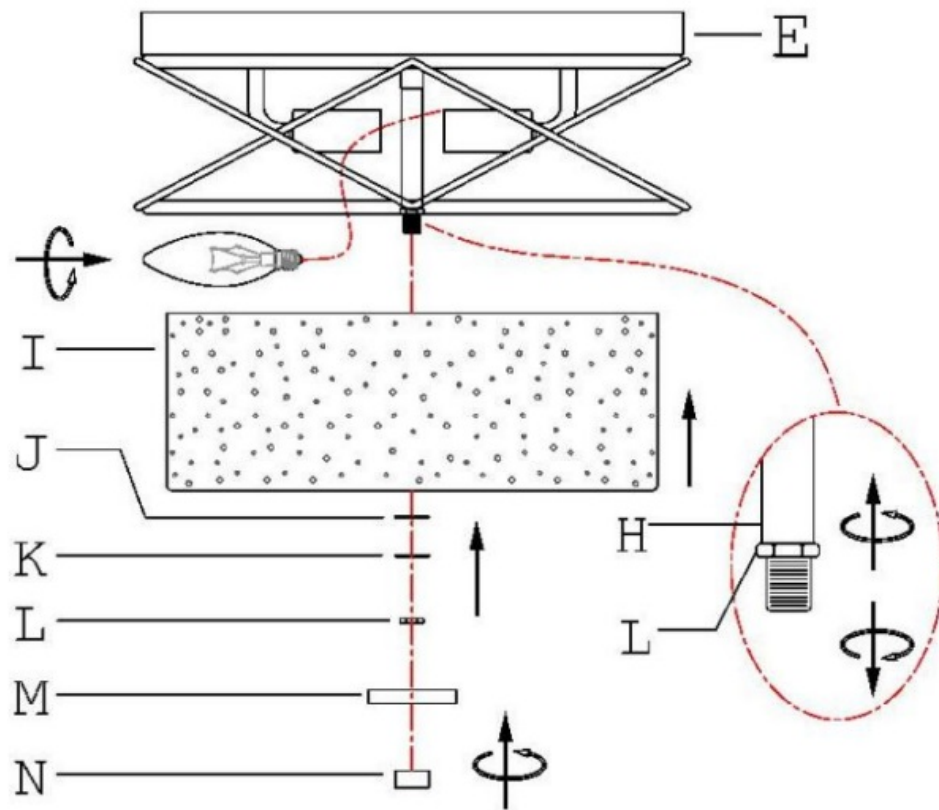
- Twist wires together with plastic wire connectors until tightly joined.
- Wrap each connector with approved electrical tape.
- Be sure that no wire strands are exposed, and then carefully tuck all wires into the outlet box.

7. Raise the canopy (E) over the outlet box. Align canopy (E) with the pre-assembled mounting screws. Secure canopy (E) with the previously removed knob nuts (G) till snug.



Note: canopy (E) should be snug against the ceiling and knob nuts (G). If not, adjust the threaded length on the mounting plate assembly (C):

- Unscrew the pre-assembled hex nuts.
 - Screw the pre-assembled screws in or out of mounting plate (C).
 - When the secure length is achieved, tighten the hex nuts and go back to step 7.
8. 1. Install bulbs (not included) (Please do not exceed the maximum wattage recommended on the socket.)
2. Carefully let tube (H) pass through glass shade (I), plastic washer (J), and iron washer (K).
3. Tighten the hex nut (L) onto the tube (H) to secure the glass shade
4. Carefully let tube (H) pass through flat cover (M).
5. Tighten the flat nut (N) onto the tube (H) to secure the flat cover (M).



9. Check that everything is already installed properly, then you can turn on the light.
Enjoy!

ORDERING PARTS

Keep this sheet for future reference in case you need to order replacement parts. All parts for this fixture can be ordered from the place of purchase. Be sure to use exact wording from illustration when ordering parts.

CLEANING

To clean, wipe the fixture with a soft cloth. Clean glass with a mild cleaner (such as mild and non-abrasive soap). Do not use abrasive materials such as scouring pads or powders, steel wool, or abrasive paper.

Customer Care

customercare@inchome.com

FAQs

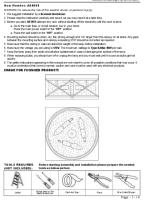
Q: Can I use bulbs with a wattage higher than 40W?

A: No, the maximum wattage per bulb should not exceed 40W to ensure safety and proper functioning of the product.

Q: Do I need to hire an electrician for installation?

A: It is suggested to have the installation done by a licensed electrician to reduce the risk of fire, electric shock, or personal injury.

Documents / Resources

	LNC HOME A04908 Ceiling Light Fixture [pdf] Installation Guide A04908, A04908 Ceiling Light Fixture, A04908, Ceiling Light Fixture, Light Fixture, Fixture
---	---

References

- [User Manual](#)

 A04908, A04908 Ceiling Light Fixture, Ceiling Light Fixture, Fixture, light fixture, LNC

 LNC HOME HOME

Leave a comment

Your email address will not be published. Required fields are marked *

Comment *

Name

Email

Website

☐ Save my name, email, and website in this browser for the next time I comment.

Post Comment

Search:

e.g. whirlpool wrf535swhz

Search

[Manuals+](#) | [Upload](#) | [Deep Search](#) | [Privacy Policy](#) | [@manuals.plus](#) | [YouTube](#)

This website is an independent publication and is neither affiliated with nor endorsed by any of the trademark owners. The "Bluetooth®" word mark and logos are registered trademarks owned by Bluetooth SIG, Inc. The "Wi-Fi®" word mark and logos are registered trademarks owned by the Wi-Fi Alliance. Any use of these marks on this website does not imply any affiliation with or endorsement.