




# LLOYD S LC-1352 LED String Lights User Guide

[Home](#) » [LLOYD S](#) » LLOYD S LC-1352 LED String Lights User Guide 

## Contents

- [1 LLOYD S LC-1352 LED String Lights](#)
- [2 PRODUCT INFORMATION](#)
- [3 Characteristics](#)
- [4 Contents](#)
- [5 Registration and access](#)
- [6 Electrical specifications](#)
- [7 Documents / Resources](#)



**LLOYD S LC-1352 LED String Lights**



## PRODUCT INFORMATION

- **Brand:** Lloyd's
- **Model:** LC-1352

Lloyd's® helps you make your Home a Smart Home Take control from one single app and transform your spaces into safe, efficient, comfortable and fun places.

## QUICK GUIDE

PLEASE READ THE INSTALLATION GUIDE BEFORE OPERATING THE PRODUCT

Cosration is subject to two conditions: this device may not cause hermit interference, and (2) this device must accept! "Cosration is subject to two conditions: (1) this device may not cause hermit interference. and (2) this device must accept any interferences, including interference caused by the modified condition This appliance is not for persons (including children) whose physical, sensory, or mental capacities are different, reduced lack experience or Kronedge unless such persons are under supervision

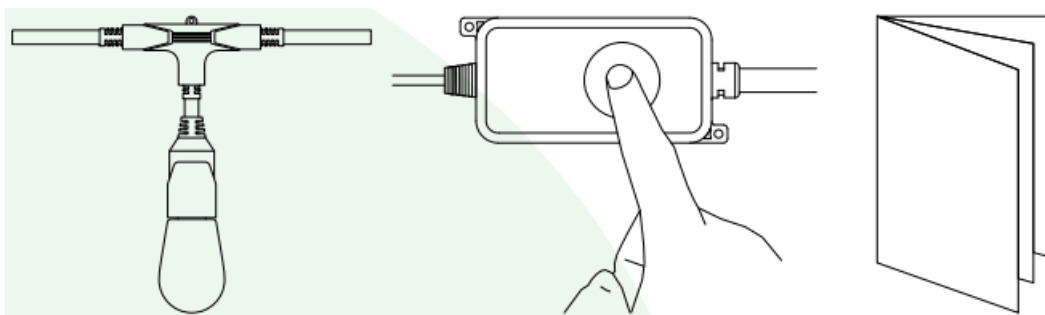
## Characteristics

1. Wi-Fi series of 12 bulbs of 6 W (0.5 W each)
2. Device is remotely controllable from anywhere through the app
3. Wide range of RGBIC colors (Built-in independent chip to customize the color of the bulbs individually) + W (warm white)
4. LED quantity: Each bulb contains 3 SMD3030 RGB LEDs + 1 SMD2835 warm white LED. light
5. Turn the device on and off manually, from the app, or by voice commands
6. No HUB required Multi-user
7. Lighting: 110 lm
8. Beam light angle: 20°
9. • Material: PC cover (polycarbonates) and PET cable (thermo-resistant)

10. • IP65 protection for the string lights (indoor and outdoor use) and IP44 for the adapter and the controller (not weather resistant)
11. Bulbs measure: 46 mm 18 mm \* 120 mm
12. • Lifespan: 20 000 hours
13. Power cable length: 7.3 meters (24 ft)
14. • Operating temperature: -20 °C ~ 45 °C (-4 °F – 113 °F)
15. Use of Bluetooth for a quick setup
16. Light color syncing to the beat of the music from the app
17. Energy-saving: create different on/off schedules for optimal lighting control
18. From the app, turn on/off, adjust brightness, schedule times, and color even when away: from home
19. • Compatible with Google Assistant and/or Amazon Alexa
20. Compatible with Siri Shortcuts through routines created from the app
21. Allows you to create routines that trigger actions in other Lloyd's Smart products

## Contents

- LED string lights (x1) Adapter with
- Quick guide
- touch controller (x1)



**NOTE:** With the included adapter, an additional string light can be added (the adapter supports upto 24 bulbs). If you require to connect 4 series (48 bulbs), you will need a 12 Vdc 2 A adapter.

## Before getting started

Make sure your smartphone has iOS 10.0 or higher or Android™ 4.4 or higher. Check your network and make sure you are connected to a 2.4 GHz Wi Fi channel.

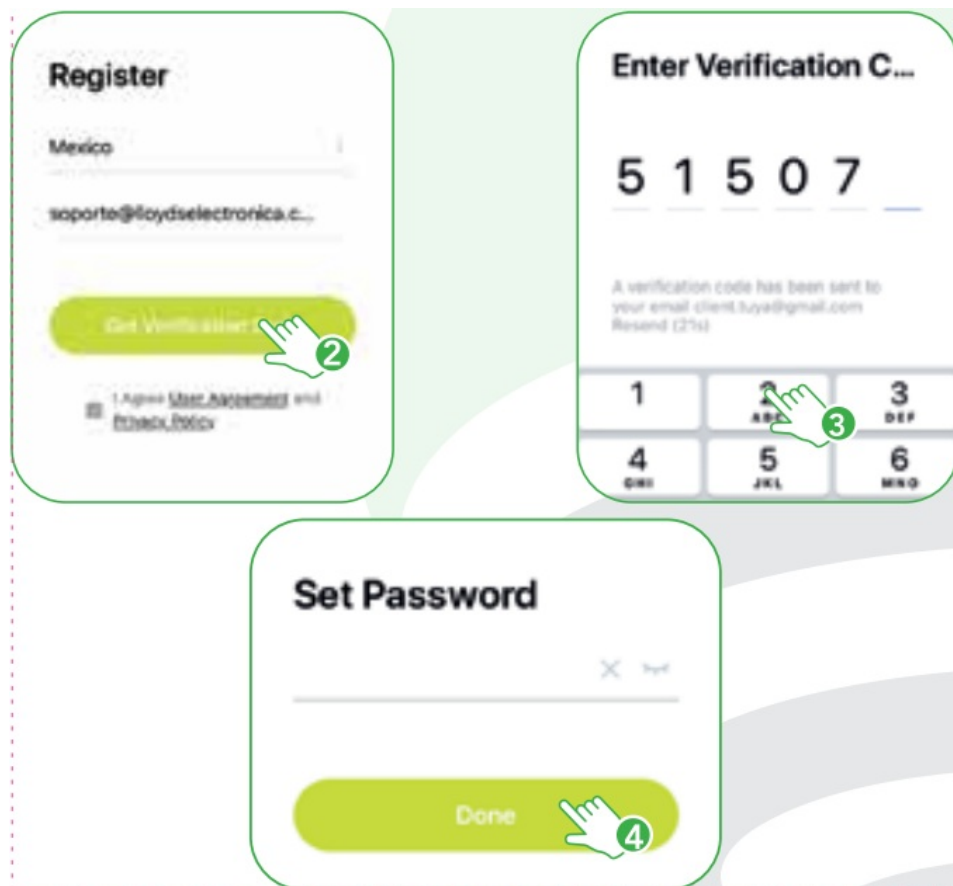
Download the Lloyds Smart app from the Aop Store or on Google Play or scan the following QR code with your 'smarthone.



## Registration and access

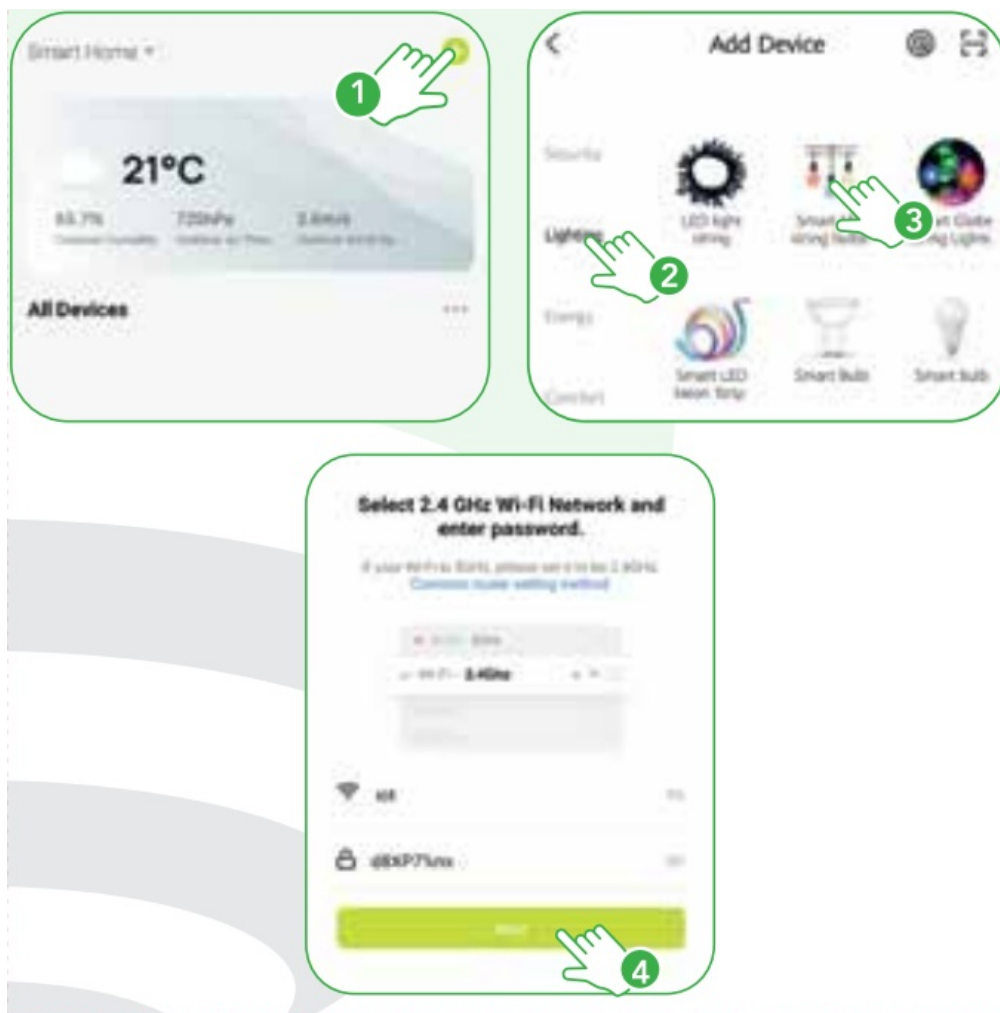
Launch the Lloyds Smart app, to continue, click “Agree.”

Click on Sign Up” (1), choose your country and enter an email address, then click “Get Verification Code” (2). Enter the code sent to your email (check inbox or spam) (3), set a password, and click “Done” (4). Or log in directly if you already have an account.

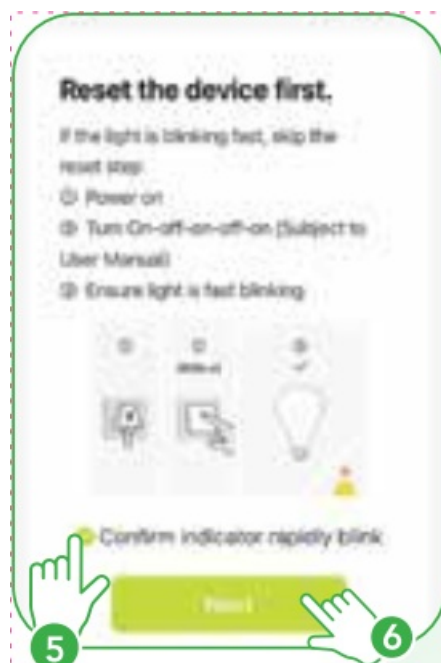


## Add device

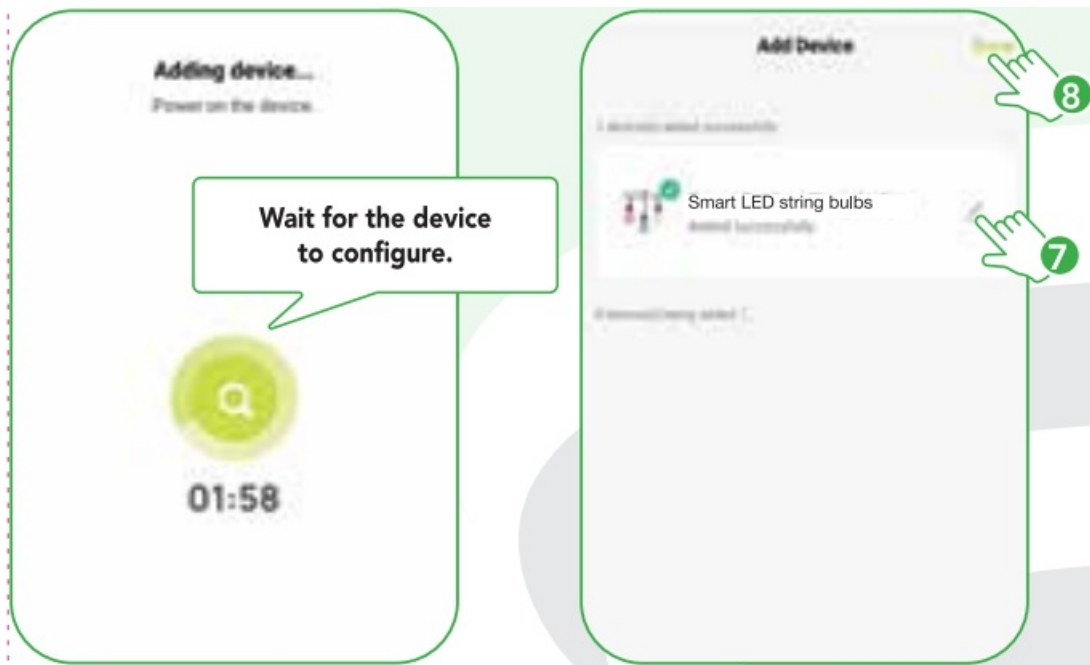
- Before adding the device, it is advisable to disable the Bluetooth function on your Smartphone.
- Start the Lloyds Smart app on your smartphone, select “+” (upper; right corner) (1), choose the type of device that you want to add. In this case, go to “Lighting” (2), then click on “Smart LED string bulbs” (3). Enter your Wi-Fi network information and password, then click “Next” (4).



- Connect the device to the power supply, then press the touch button of the controller for 1 seconds until the bulbs start to flash rapidly. Confirm from the app. (5), then click “Next” (6).

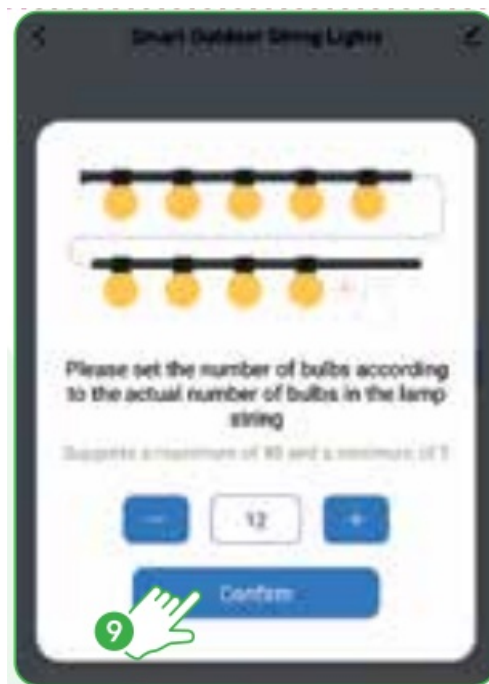


- Once the device is configured, you can change the name (7). Finally, click on “Done” (8)



**NOTE:** Make sure the Wi Fi password you enter is correct and that the device is close to the modem during the process.

- Ensure to set the corresponding number of bulbs to the model of the device (for this model, set 12 bulbs), Then click on “Confirm” (9)



- After completing the setup, find and select the device in the list (10) to control it through the app. from wherever you are. Only an internet connection is: required



## How to configure with Siri Shortcuts

jLloyd's Smart products are compatible with Siri Shortcuts through routines created from the app. For configuration details, scan the following QR code with your smartphone:



Make sure your smartphone has iOS 12 or higher.



## Google Assistant and Amazon Alexa

How to connect to Google Assistant:

1. Download and launch the Google Home app, previously configured with your Gmail: account and your Google Assistant-enabled device.
2. Click on the “+” icon, choose “Set up Device,” then in the “Works with Google”: section, click on the search bar and type in Lloyds Smart. When you get the icon, click on it. Enter your Lloyds Smart account and click on “Link now”. Then press on; “Authorize” and wait a few seconds.
3. Once you have linked Lloyds Smart, the devices added to your account will be; displayed, click on “X” (top left corner) and return to the main screen. Now you can: control your Lloyd’s Smart devices using just your voice with Google.

**NOTE:** You can rename the devices from the Lloyds Smart app to control them with voice commands. Every time you rename the devices, say: “Hey Google, sync devices” update from the Google Home app.



Try saying “Hey Google” followed by one of the following commands:

- Hey Google, turn on the garden lights”
- “Hey Google, turn off the study lights”
- “Hey Google, set the study lights to green”

“Google. Android, Google Play and Google Home are trademarks of Google LLC.”

## Cautions

To reduce the risk of fire and electric shock:

- Do not use the controller or power source (AC/DC adapter) of the decorative appliance in outdoors.
- Do not install or place near gas or electric heaters, fireplaces, candles or other similar sources of heat.
- Unplug the product when leaving the house, when retiring to sleep, or if left unattended.
- Do not hang decorations or other objects on the cord, cable or light strip.
- Do not cover the decorative product with cloth, paper or any material that is not part of the product when in use
- Do not install the strip in a manner that may cut or damage the wire insulation,:

## FCC Statement



This device complies with Part 15 of the FCC Rules. Operation is subject to the following two conditions:

1. This device may not cause harmful interference, and
2. This device must accept any interference received, including interference that may cause undesired operation.

**Warning:** Changes or modifications not expressly approved by the party responsible for compliance could void the user's authority to operate the equipment.

**NOTE:** This equipment has been tested and found to comply with the limits for a Class B digital device, pursuant to Part 15 of the FCC Rules. These limits are designed to provide reasonable protection against harmful interference in a residential installation. This equipment generates uses and can radiate radio frequency energy and, if not installed and used in accordance with the instructions, may cause harmful interference to radio communications.

However, there is no guarantee that interference will not occur in a particular installation. If this equipment does cause harmful interference to radio Or television reception, which can be determined by turning the equipment off and on, the user is encouraged to try to correct the interference by one or more: of the following measures:

- Reorient or relocate the receiving antenna.
- Increase the separation between the equipment and receiver.
- Connect the equipment into an outlet on a circuit different from that to which the receiver is connected.
- Consult the dealer or an experienced radio/TV technician for help.

#### **FCC Radiation Exposure Statement**

This equipment complies with FCC radiation exposure limits set forth for an uncontrolled environment. This equipment should be installed and operated with a minimum distance 20cm between the radiator & your body.

#### **Warranty (USA only)**

This product is warranted to last year. If this product does not last the stated warranty period, please contact us at [support@lloydscorp.com](mailto:support@lloydscorp.com)

This product is not guaranteed against wear or breakage due to misuse and/or abuse.

#### **Electrical specifications**

- 12 V 1000 mA
- AC/DC ADAPTER:
- INPUT: 100 – 240 VAC 50/60 Hz 0,4 A MAX.
- OUTPUT: 12 V 1 000 mA

#### **IMPORTED INTO MÉXICO BY.**

ZUTTO TECHNOLOGIES, S. A. DE C. V. Avenida Ejército Nacional No. 505 Interior 1602, Col. Granada Miguel Hidalgo, Ciudad de México, México C.P. 11520 Teléfono: 55 68447575 R.F.C.: ZTE161017KT6

IMPORTED INTO THE UNITED STATES OF AMERICA BY; Kavto Innovations LLC 2199 Ponce de Leon Blvd Ste 301 Coral Gables, FL, 33134, USA [lloydscorp.com](http://lloydscorp.com) [support@lloydscorp.com](mailto:support@lloydscorp.com)

#### **Documents / Resources**



[LLOYD S LC-1352 LED String Lights](#) [pdf] User Guide  
LC-1352 LED String Lights, LC-1352, LED String Lights, String Lights, Lights