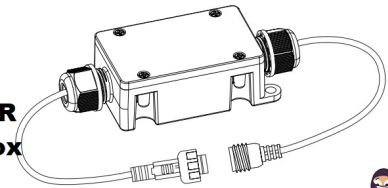


llitt

**WSM1448-51-R  
Allan Smartbox  
WiFi**



# llitt WSM1448-51-R Allan Smartbox WiFi User Manual

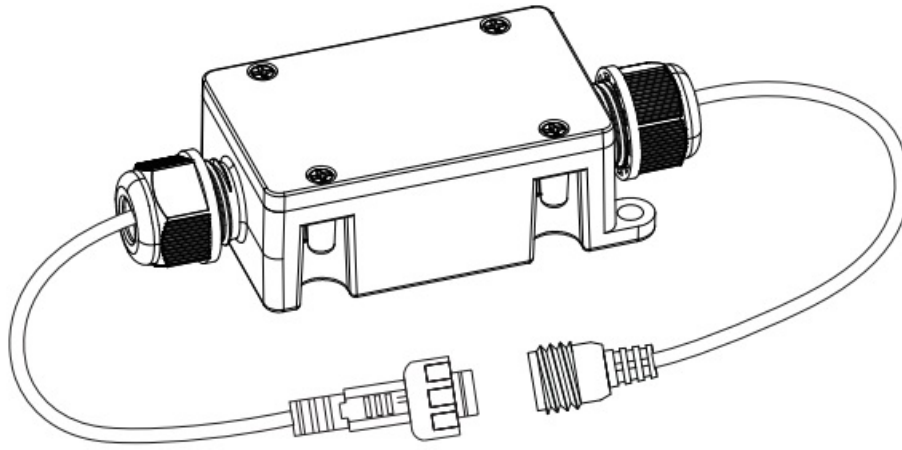
[Home](#) » [Llitt](#) » llitt WSM1448-51-R Allan Smartbox WiFi User Manual 

## Contents

- [1 llitt WSM1448-51-R Allan Smartbox WiFi](#)
- [2 Product Usage Instructions](#)
- [3 FAQ](#)
- [4 Warning](#)
- [5 Download app and Register account](#)
- [6 Fixture Connection](#)
- [7 EZ Mode\(Easy-Connect Mode\)](#)
- [8 AP Mode \(Access Point Mode\)](#)
- [9 Edit Timer](#)
- [10 Documents / Resources](#)
  - [10.1 References](#)

llitt

**llitt WSM1448-51-R Allan Smartbox WiFi**



### **Specifications:**

- Art.nr.: 480021
- Product Name: Allan Smartbox WiFi
- Power Output: 36W
- Current: 3A
- Version: 2024/03

### **Product Usage Instructions**

#### **Download App and Register Account:**

- a. Download the App by searching Tuya Smart in mobile app stores or scanning the provided QR code.
- b. Open the APP, click Sign Up, and create your account according to the prompts.

#### **Fixture Connection:**

- a. Ensure the fixtures blink after power on, either fast or slow. If not, power ON/OFF the Smart box three times until you see the blink.
- b. If EZ mode is not working, switch to AP mode (some routers don't support EZ mode).

#### **EZ Mode (Easy-Connect Mode):**

1. Click + at the home page
2. Select Lighting Source (BLE+Wi-Fi)
3. Enter your Wi-Fi and password, click Next. Note: Only 2.4 GHz networks are supported.
4. Click Done after the connecting process is completed; now the fixtures are added successfully.

#### **AP Mode (Access Point Mode):**

1. Click + at the home page
2. Select Lighting Source (BLE+Wi-Fi)
3. Enter your Wi-Fi name and password, click Next; you'll see the hotspot named Smartlife-XXX generated from the Smart box, click Go to Connect. Note: Only 2.4 GHz networks are supported.

4. Go back to TUYA app, click Done after the connection process is completed.

### **Edit Timer:**

Click on the Clock icon after the fixtures are added successfully. Then you can add your schedule to decide when to turn\ ON/OFF your fixtures.

### **FAQ**

- **Q: What should I do if the fixtures are not blinking after power on?**
  - A: Power ON/OFF the Smart box three times until you see the fixtures blink.
- **Q: Can I use a 5 GHz network for connection?**
  - A: No, only 2.4 GHz networks are supported for connection.

We reserve the right to change specifications without notice

### **Warning**

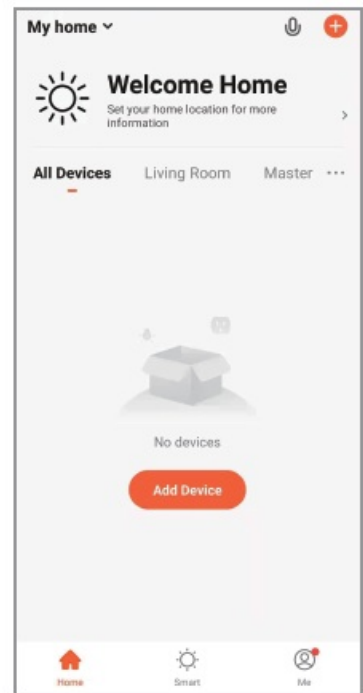
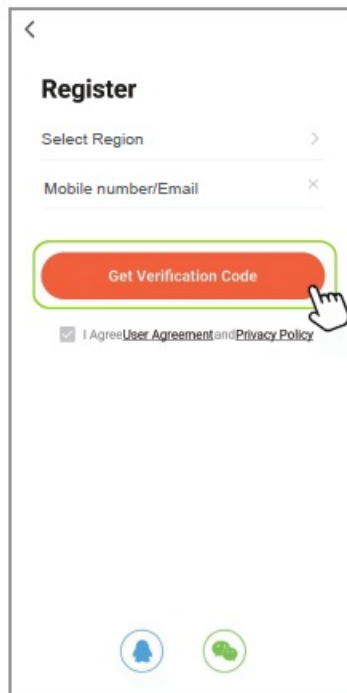
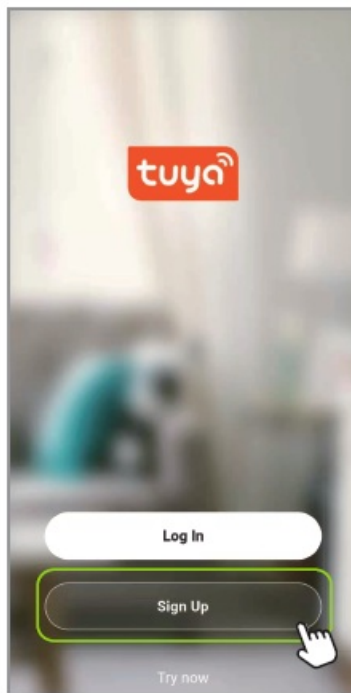
1. Make sure the power supply is DC 12V only;
2. Don't ever disassemble or repair under any circumstances;
3. When the lamp is not used for a long time, please disconnect the power supply;
4. Do not overload the circuit, otherwise it may cause electric shock or fire.

### **Download app and Register account**

- a. You can download the App by searching Tuya Smart in mobile app stores or scanning the following QR code



- b. Open the APP, click "Sign Up" and create your account according to the prompt

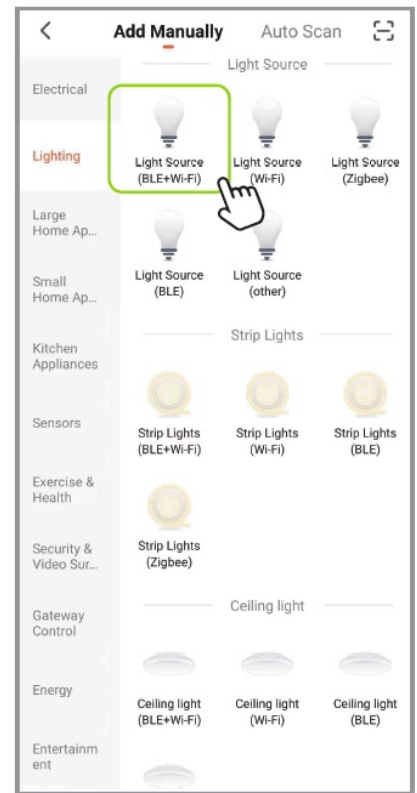
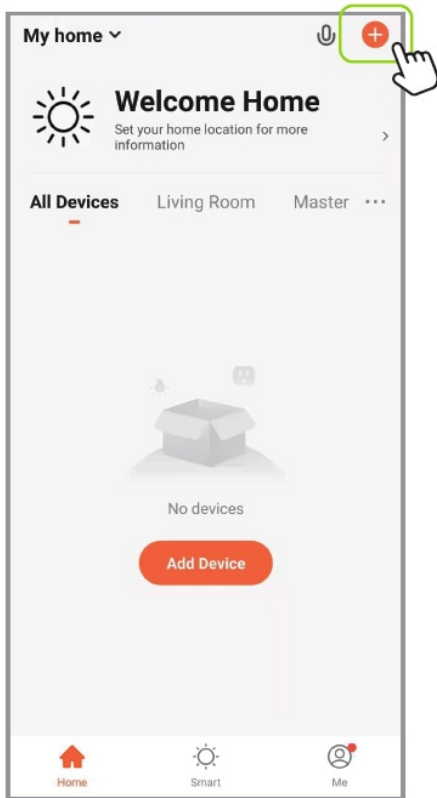


## Fixture Connection

### Note:

- a. Make sure the fixtures are blinking after power on, either fast or slow, if not, power ON/OFF the Smart box by 3 times till you see the blink.
- b. If EZ mode is not working, change to AP mode(some routers don't support EZ mode).

## EZ Mode(Easy-Connect Mode)



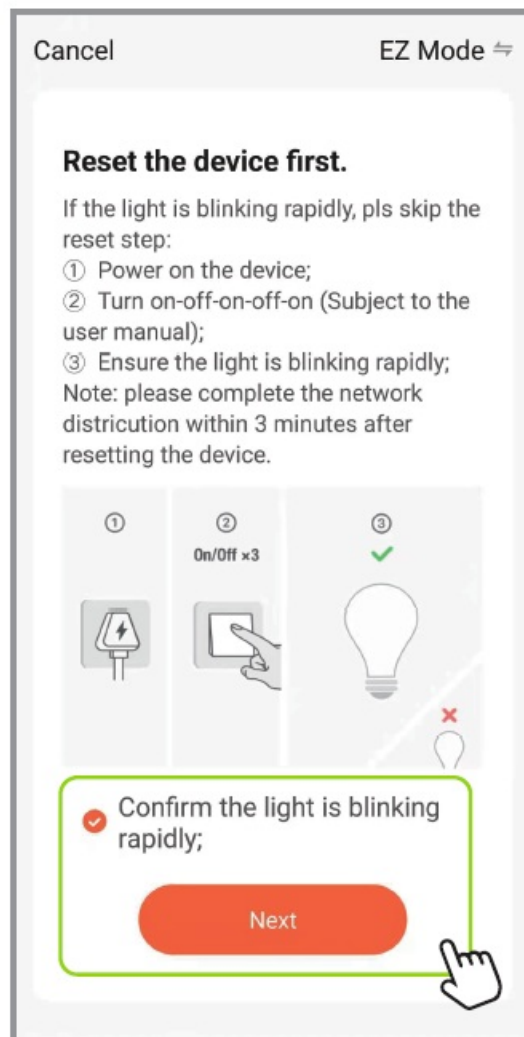
Click “+” at the  
home page



“Lighting”



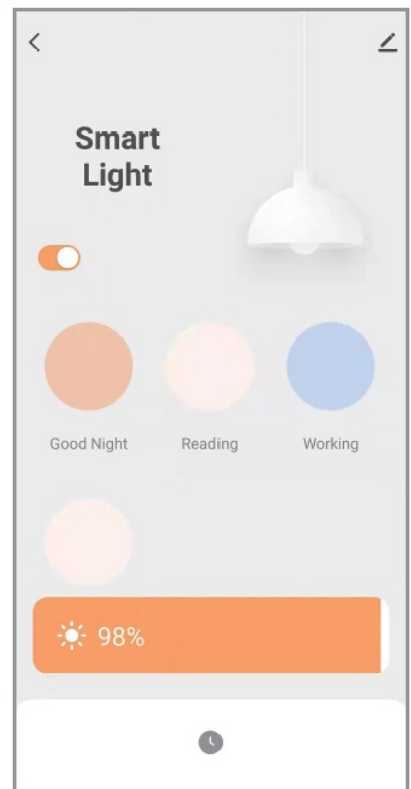
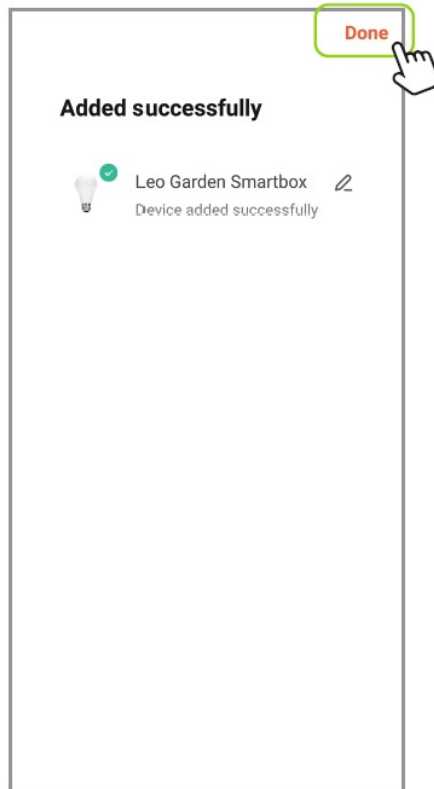
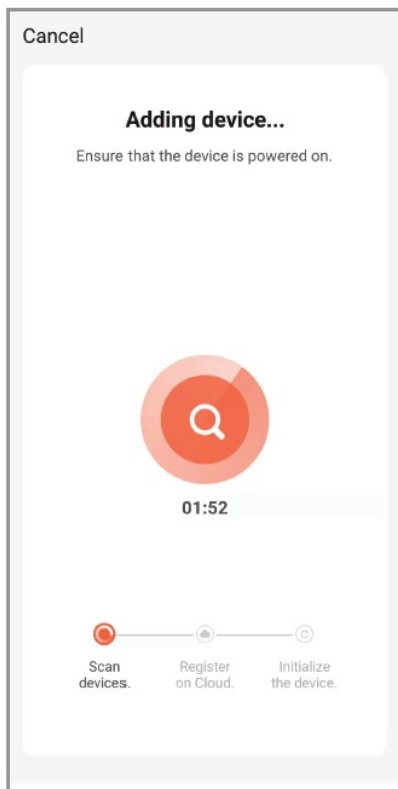
“Lighting Source  
(BLE+Wi-Fi)”



If you could see the rapid blinks from the connected fixtures, click “Confirm the light is blinking rapidly” → “Next”; If not, reset by turning Off/On by 3 times till it appears.

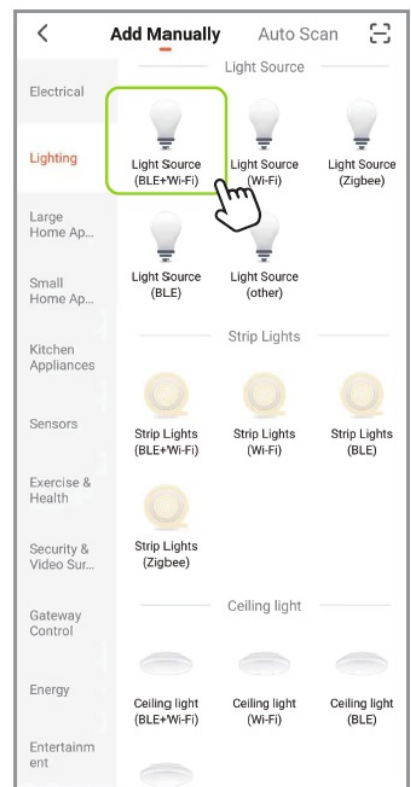
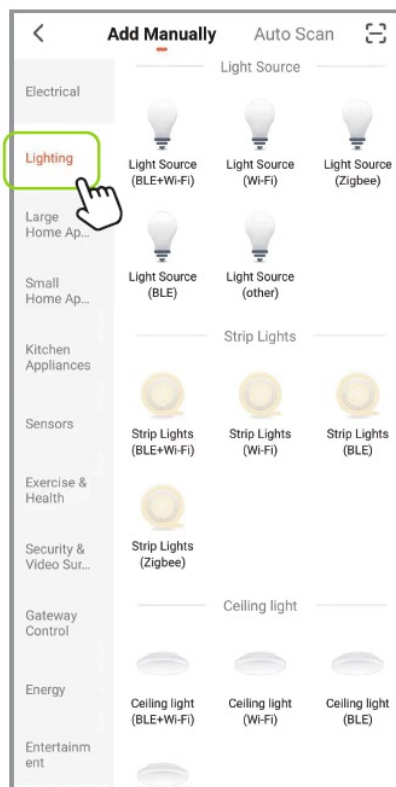
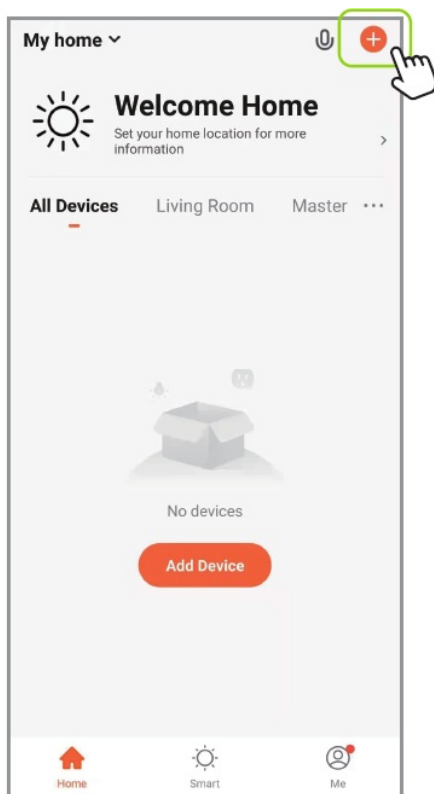
A mobile application interface for selecting a Wi-Fi network. At the top left is a "Cancel" button. The main heading is "Select 2.4 GHz Wi-Fi Network and enter password." Below this, a note states: "If your Wi-Fi is 5GHz, please set it to be 2.4GHz. [Common router setting method](#)". There are two large circular icons: a yellow one with a smiley face labeled "2.4GHz" and a red one with a frowny face labeled "5GHz". Below these are two input fields, each with a Wi-Fi icon, a series of eight dots, and a toggle switch. The bottom of the screen features a large orange "Next" button, which is highlighted with a green rectangular border and a hand cursor icon pointing at it.

Enter your WI-FI and password, click “Next”. Note: Only 2.4 GHz network are supported.



Click “Done” after the connecting process is completed, now the fixtures are added successfully.

## AP Mode (Access Point Mode)



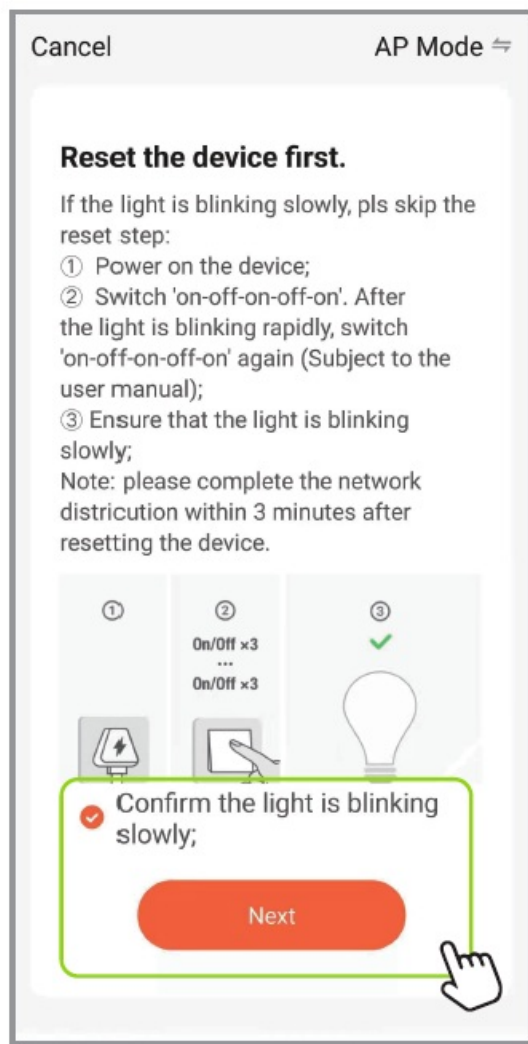
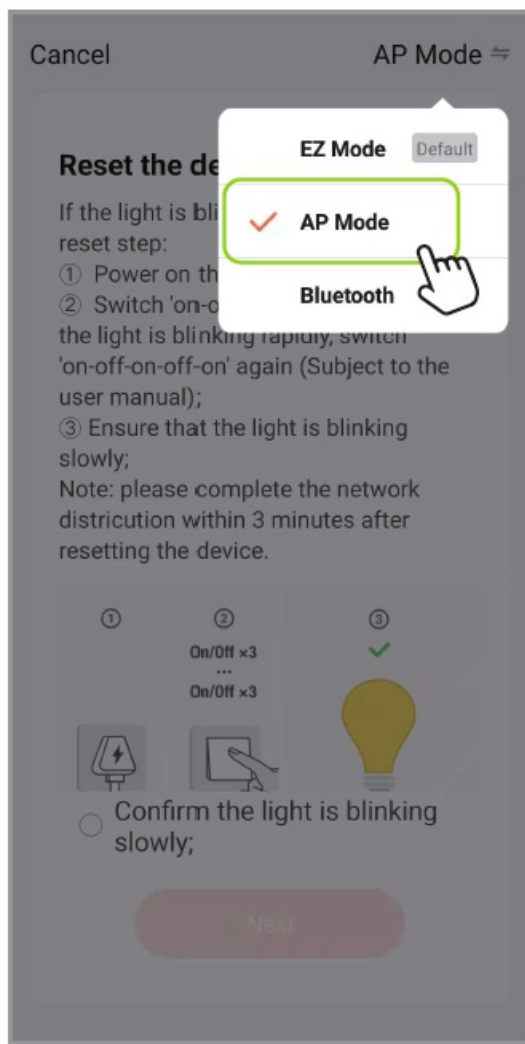
Click “+” at the home page



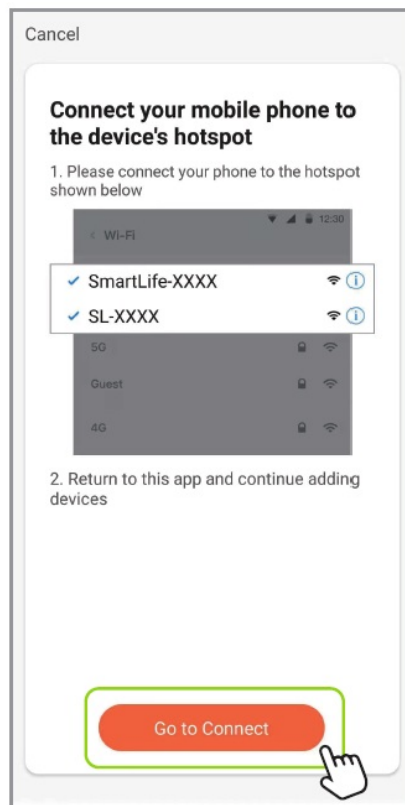
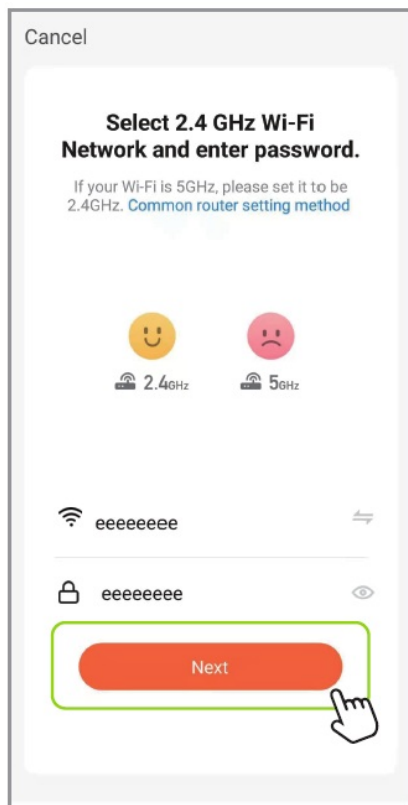
“Lighting”



“Lighting Source (BLE+Wi-Fi)”



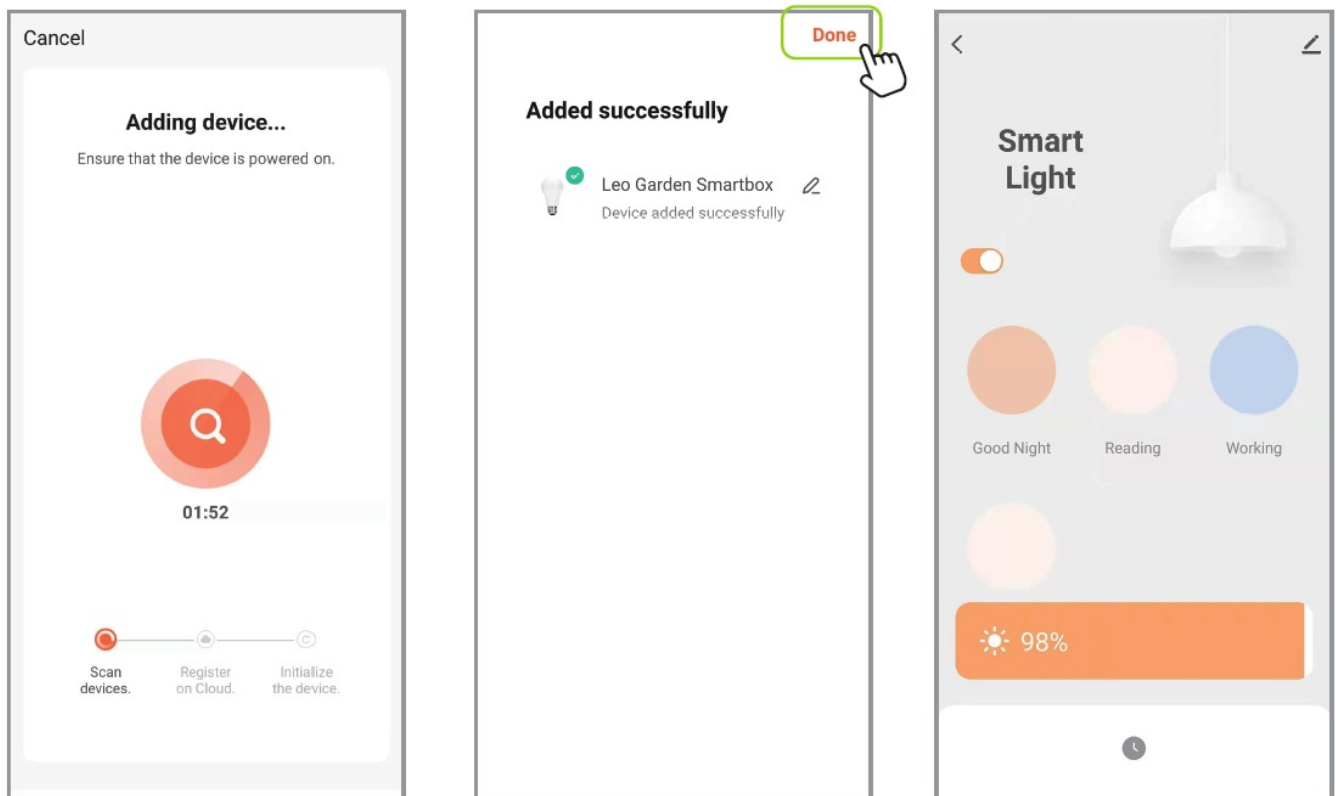
Click “AP Mode”→“Confirm the light is blinking slowly”→“Next” If you see the rapid blinking instead of slow ones,reset to AP mode by turning OFF/ON 3 times.



Enter your WI-FI name and password, click “Next”, you’ll see the hotspot named “Smartlife-XXX” generated from

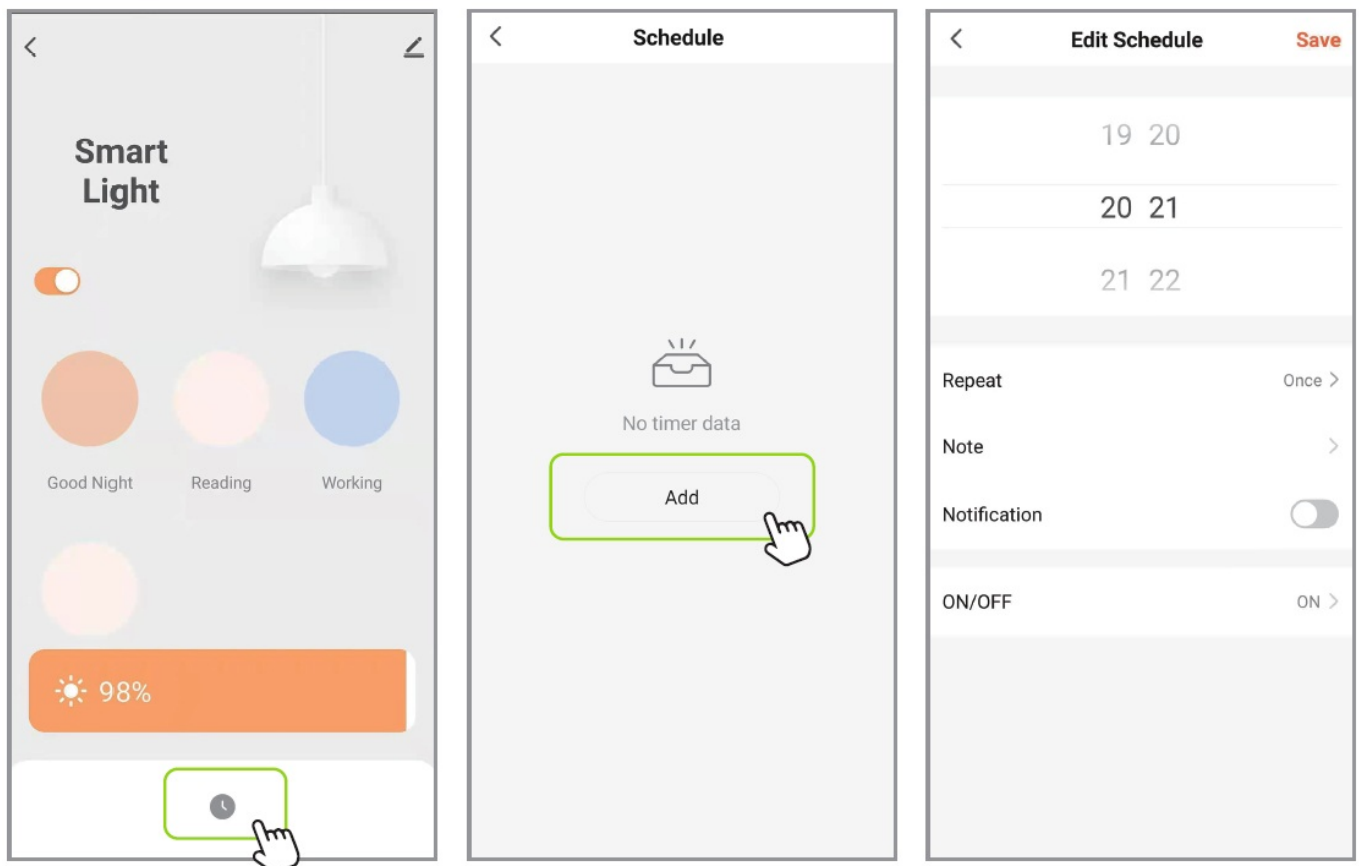


the Smart box, click “Go to Connect” .  
Note: Only 2.4 GHz network are supported



Go back to TUYA app, click “Done” after the connection process is completed.

## Edit Timer

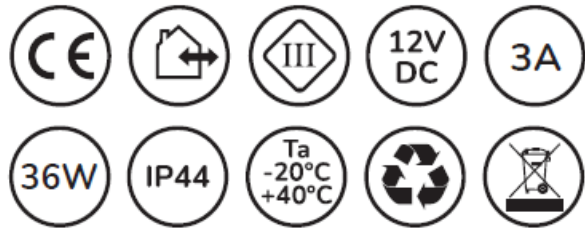


Click on the Clock icon after the fixtures are added successfully, then you can add your schedule to decide when

to turn ON/OFF of your fixtures.

Nexa Trading AB Tallvägen 5, SE-564 35 Bankeryd, Sweden [info@nexa.se](mailto:info@nexa.se), [www.llitt.com](http://www.llitt.com)

## Symbol



## Documents / Resources

	<p><b><a href="#">llitt WSM1448-51-R Allan Smartbox WiFi</a> [pdf] User Manual</b></p> <p>WSM1448-51-R Allan Smartbox WiFi, WSM1448-51-R, Allan Smartbox WiFi, Smartbox WiFi, WiFi</p>
---	--

## References

- [llitt Brett sortiment av inomhus- och utomhusbelysning hos Llitt](#)
- [User Manual](#)

### [Manuals+](#), [Privacy Policy](#)

This website is an independent publication and is neither affiliated with nor endorsed by any of the trademark owners. The "Bluetooth®" word mark and logos are registered trademarks owned by Bluetooth SIG, Inc. The "Wi-Fi®" word mark and logos are registered trademarks owned by the Wi-Fi Alliance. Any use of these marks on this website does not imply any affiliation with or endorsement.