



## My Livoltek App User Manual

[Home](#) » [LIVOLTEK](#) » My Livoltek App User Manual 

### Contents

- 1 My Livoltek App
- 2 Product Information
- 3 Product Usage Instructions
- 4 INSTALLER USER MANUAL TIPS
- 5 Create a site
- 6 Add your device
- 7 Intial parameter settings by local model(Bluetooth)
- 8 Wi-Fi Dongle connection
- 9 Usage details
- 10 Documents / Resources
  - 10.1 References
- 11 Related Posts

# LIVOLTEK

### My Livoltek App



## Product Information

The product is a solar power system that can be managed through a mobile app called MY LIVOLTEK. The app is available for download on both Google Play Store and App Store. Installers need to register on the website to create an account and log in through the app. The web links are different for different regions – link1 is for Europe, Middle East, and Africa, while link2 is for Asia, Latin America, Australia, and other regions. The app provides daily yield, real-time power, daily revenue, total yield, total revenue, and self-use ratio of all the sites. In addition, it also provides information about the inverter working state, PV, grid, battery, and load on the power flow page. The system has two modes of parameter setting – local mode Bluetooth and remote online.

## Product Usage Instructions

1. **Download the App:** Download the MY LIVOLTEK app from Google Play Store or App Store.
2. **Registration by Web & Use by App:** Installers need to register on the website using the appropriate link for their region before using the app. Once registered, follow these steps:
  1. **Open URL to Register:** Open the website and enter your login account and password to register.
  2. **Open Your App to Use:** After registration, open the app and enter your account and password to log in.
  3. **Create a Site:** Enter your login account and password along with the verification code. Click on “Create a Site Now” if you are logging in for the first time. Input your plant information including system type (mandatory), PV capacity (mandatory), PV type (optional), and PV arrange (optional). Set the time-of-use tariff of your site. Choose the end user’s registration region and put their account name in the owner box.
  4. **Add Your Device:** Click on “Add” and choose the device model. Scan the SN number on your device to add it successfully.
3. **Initial Parameter Settings by Local Model (Bluetooth):** Follow these steps to set the parameters locally through Bluetooth:
  1. **Click Local Mode:** Open the app and click on “Local mode”.
  2. **Click the Bluetooth Mode:** Click on “Bluetooth Mode”.
  3. **Find Your Device’s SN Number:** Find your device’s SN number and click on it.
  4. **Initial Parameter Setting:** Enter the password hx123456 to set the initial parameters.
4. **Wi-Fi Dongle Connection:** Follow these steps to connect the Wi-Fi dongle:
  1. **Click Local Mode to Connect Wi-Fi Dongle:** Open the app and click on “Local mode” to connect the Wi-Fi dongle.
  2. **Click It:** Click on it.
  3. **Press Reset Key for 3-5s Entering Smart BIEink Mode:** Press the reset key for 3-5 seconds to enter Smart BIEink mode. Make sure the power/BT LED is blinking.
  4. **Connect Your Phone with Your Home Wi-Fi Router:** Connect your phone with your home Wi-Fi router.
  5. **Click Next:** Click on “Next”. Put in the password and click on “Confirm”.
  6. **Successful:** After successful connection, press the reset key. Check note2 and then finish the process.
5. **Usage Details:** Open the app to find daily yield, real-time power, daily revenue, total yield, total revenue, and self-use ratio of all the sites. You can also find information about the inverter working state, PV, grid, battery, and load on the power flow page. You can set the parameters locally through Bluetooth or remotely online. Use the “Basic settings”, “Advanced settings” and “Feed in Limitations” options for this purpose.

## INSTALLER USER MANUAL TIPS

Please note that only end-users can register your app account by mobile phone, installers please register by

Website

Web link2: <https://evs.livoltek-portal.com/#/> For Asia, Latin American, Australia and others

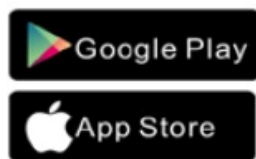
Web link1: <https://www.livoltek-portal.com/#/> For Europe, Middle East Regions, Africa

Web link2: <https://evs.livoltek-portal.com/#/> For Asia, Latin American, Australia and others  
Web link1: <https://www.livoltek-portal.com/#/> For Europe, Middle East Regions, Africa

## 1.Download APP

Download "MY LIVOLTEK" app

The app is available on Google Play Store(Android) and App Store(Apple)



My Livoltek



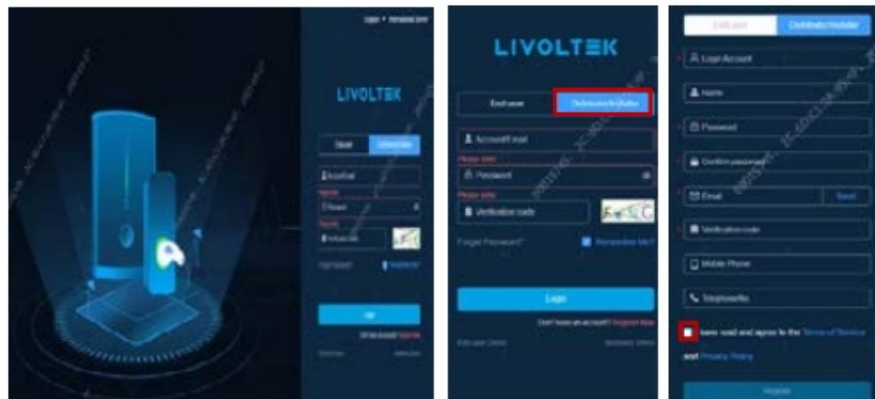
Download

## 2. Registration by web & Use by APP

### STEP 1

Open **URL** to register

Tips: Installers need to register on the web, then can log into the account on the APP.



## STEP 2

Open your app to use

- 1) Put in your account and password.
- 2) Click the login.



## STEP 3

Successful



## Create a site

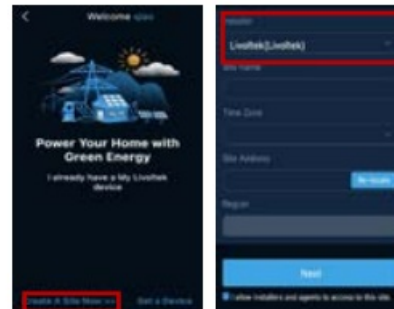
### STEP 1

- Enter your Login account and password and verification code
- Click on LOGIN



### STEP 2

- 1)Click "CREATE A SITE NOW",If you are logging in for the first time
- 2)Input your plant information



### STEP 3

- Choose your system type (Mandatory) and PV capacity (Mandatory)
- PV type(Optional) and PV Arrange (Optional)



### STEP 4

- Set time-of-use tariff of your site.

#### Tips:

- Please fill in the 24-hour electricity tariffs.



### STEP 5

- 1)Choose end user's registration region
- 2)Put in end user's account name in owner box

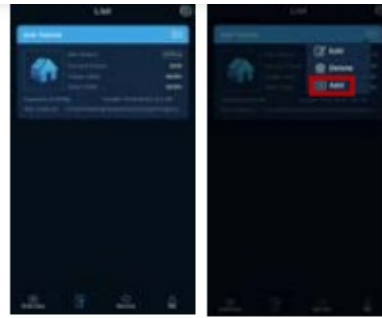


## Add your device

**STEP 1**

Add your device

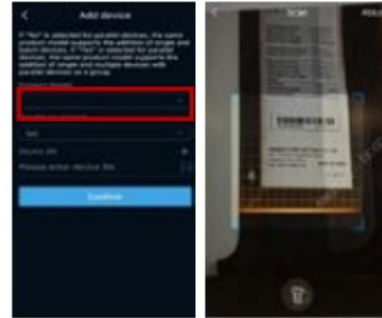
Click  Click add 



**STEP 2**

Choose device model

Click  to Scan SN number on your device



**STEP 3**

Successfully



## Initial parameter settings by local model(Bluetooth)

**STEP 1**

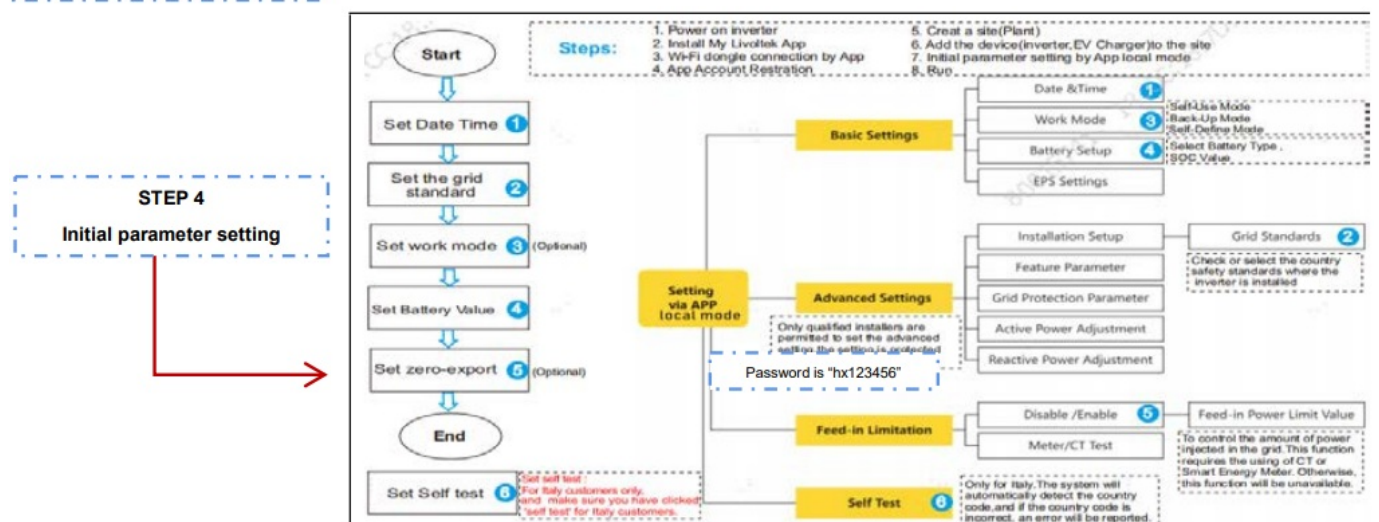
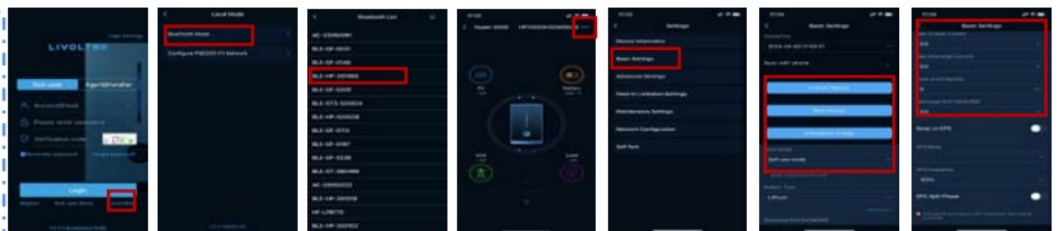
Click 'Local mode'

**STEP 2**

Click the 'Bluetooth Mode'

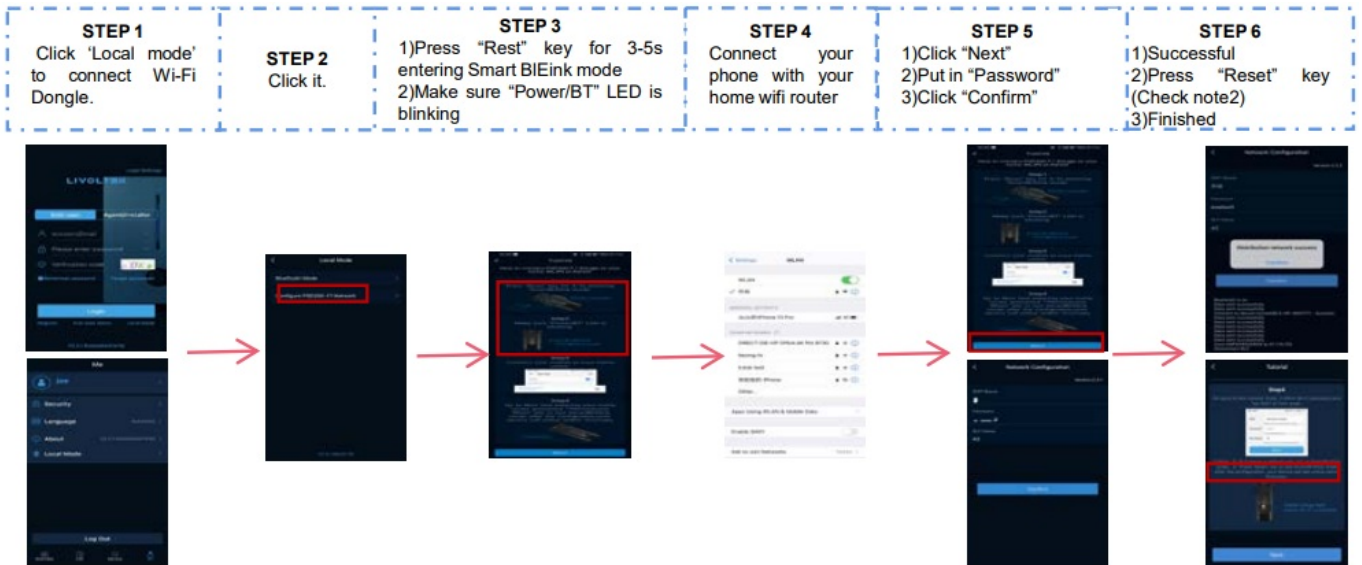
**STEP 3**

Find your Device's SN number, and click it.





## Wi-Fi Dongle connection



## Usage details



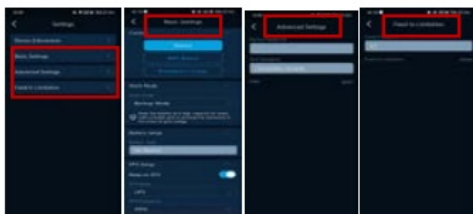
In this page, you will find daily yield, real-time power, daily revenue, total yield, total revenue and self-use ratio of all your sites.



In this page, you will find the following information about the site

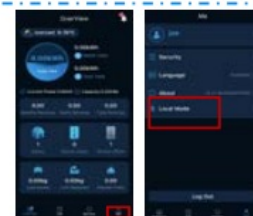


In this page, you can find inverter working state. Touch the system units' icons of PV, Grid, Battery and Load on power flow page, you can check generation details.



Parameter setting by local mode bluetooth

Parameter setting remotely on line  
In this page you can find 'Basic settings' 'Advanced settings' 'Feed in Limitations'



## Documents / Resources



[LIVOLTEK My Livoltek App](#) [pdf] User Manual  
My Livoltek App, Livoltek App, App

## References

- [LIVOLTEK Monitoring](#)
- [LIVOLTEK Monitoring](#)

