




IAN
459143_2401
LED String
Lights



LIVARNO home IAN 459143_2401 LED String Lights Instruction Manual

[Home](#) » [LIVARNO home](#) » LIVARNO home IAN 459143_2401 LED String Lights Instruction Manual 

Contents

- [1 LIVARNO home IAN 459143_2401 LED String Lights](#)
- [2 Package contents](#)
- [3 Technical data](#)
- [4 Safety information](#)
- [5 Inserting/replacing batteries \(fig. A\)](#)
- [6 Storage, cleaning](#)
- [7 WARNINGS](#)
- [8 Documents / Resources](#)
 - [8.1 References](#)
- [9 Related Posts](#)



LIVARNO home IAN 459143_2401 LED String Lights



LED STRING LIGHTS




Congratulations!

You have chosen to purchase a high-quality product. Familiarise yourself with the product before using it for the first time.



Read the following instructions for use carefully.

Use the product only as described and only for the given areas of application. Store these instructions for use carefully. When passing the product on to third parties, please also hand over all accompanying documents.

Package contents

- 1 x LED String lights
- 2 x battery (1.5V  LR6, AA)
- 1 x instructions for use

Technical data

- **Total length:** approx. 240cm
- **Battery power supply:** 2 x 1.5V LR6, AA
-  DC symbol
-  Date of manufacture (month/year): 06/2024
- Delta-Sport Handelskontor GmbH hereby declares that this product meets the following basic requirements, as well as other important regulations:
- 2014/30/EU – EMC Directive
- 2011/65/EU – RoHS Directive
- UK Conformity Assessed
- Delta-Sport Handelskontor GmbH hereby declares that this product meets the following basic requirements, as well as other important regulations:
- Electromagnetic Compatibility
- Regulations 2016
- The Restriction of the Use of Certain
- Hazardous Substances in Electrical and
- Electronic Equipment Regulations 2012

Intended use

The product is for private indoor use only and is not intended for commercial use. The product can be used for decorative purposes.



Not suitable for general household lighting

Safety information

Important: read these instructions for use carefully and keep them in a safe place!

Life-threatening hazard!

- Warning. Not suitable for children! Choking hazard – contains small parts!
- Never leave children unattended with the packaging materials. There is a risk of suffocation.
- Hang up out of reach of children.
- This product can be used by children above the age of 8 and by people with reduced physical sensory, or mental capacities or by those lacking experience and knowledge provided they are supervised or have been

instructed in the safe use of the product and understand the risks involved.

- Children may not play with the product. Cleaning and user maintenance may not be performed by children without supervision.

Danger of Injury!

- Warning. None of the packaging or fastening materials are part of the product itself, and must always be removed for safety reasons before the product is used.
- Check the product for damage and wear before each use. The product may only be used in good order and condition!
- No modifications may be made to the product!
- The light source for this lighting fixture is not replaceable; when the light source has reached the end of its service life, the entire lighting fixture must be replaced.

Warnings on batteries!

- Remove the batteries if they are empty or if the product is not going to be used for an extended period.
- Do not use different battery types or brands, new and used batteries in combination, or batteries with different capacities, as they leak and can thus cause damage.
- Observe the polarity (+/-) when inserting batteries.
- Change all batteries at the same time and dispose of the old batteries properly.
- Warning! Batteries may not be charged or reactivated in any way. They may not be dismantled, thrown into fire, or short-circuited.
- Always keep batteries out of the reach of children.
- Do not use rechargeable batteries
- The cleaning and user-maintenance may not be carried out by children without supervision.
- Clean the batteries and the device contacts as necessary and before inserting the batteries.
- Do not expose the batteries to extreme conditions (e.g. radiators or direct sunlight). Otherwise there is an increased risk of leaks.

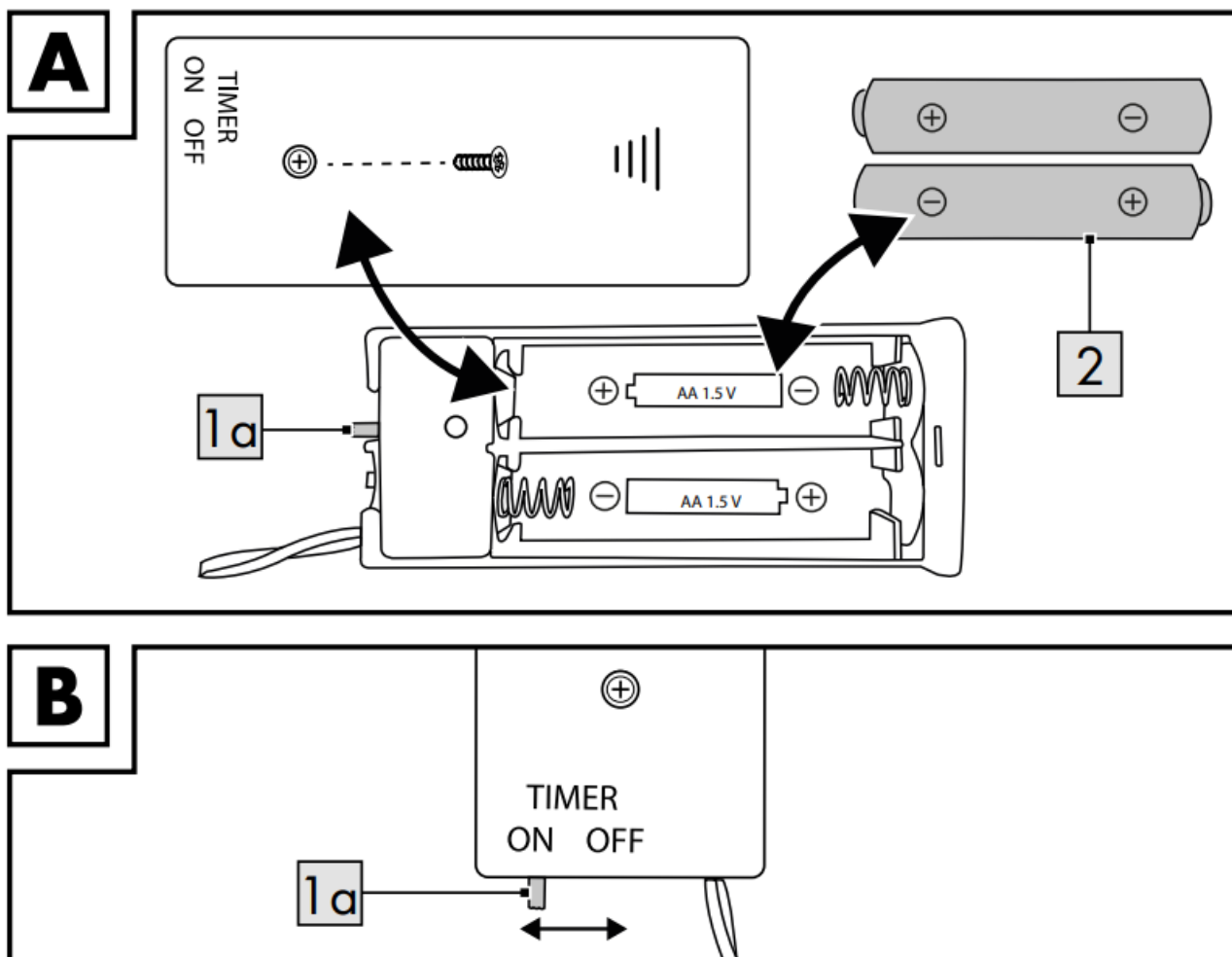
Warning. Used batteries must be disposed of immediately. Keep new and used batteries out of the reach of children. Seek medical help immediately if you suspect that batteries have been swallowed or ingested.

Inserting/replacing batteries (fig. A)

WARNING! Comply with the following instructions in order to prevent mechanical and electrical damage. For inserting and replacing the batteries (2) proceed as shown in fig. A. Note: You will need a suitable screwdriver (not contained in delivery). Note: Pay attention to the plus/minus polarity of the batteries and their correct installation. The batteries must be located entirely inside the battery compartment.

Turning the light on and off (Fig. B)

- Use the switch (1a) to turn the product 'ON' and 'OFF'. Slide the switch to 'TIMER' to activate the product's timer function.
- **Note:** the timer function turns the light on for six hours and off for 18 hours. This rhythm repeats itself daily.



Storage, cleaning

When not in use, always store the product dry, clean, without batteries and at room temperature. Wipe clean with a dry cloth only. **IMPORTANT!** Never clean the product with harsh cleaning agents.



Disposal

The accompanying symbol indicates that this device complies with Directive 2012/19/EU. This directive indicates that you may not dispose of this device along with basic household waste at the end of its useful life and instead must hand it in to specifically designated collection sites, valuable substance collection stations, or waste disposal facilities.

- Look after the environment and dispose of waste properly. Batteries may not be disposed of with household waste. They may contain toxic heavy metals and are subject to hazardous waste treatment. The chemical symbols of the heavy metals are as follows: Cd = cadmium, Hg = mercury, Pb = lead. Dispose of used batteries at a municipal collection site.
- For further information about disposal of the product no longer needed, contact your local council. Dispose of the product and the packaging in an environmentally friendly manner. Store the packaging materials (foil bags, for example) out of the reach of children.
- Note the label on the packaging materials when separating waste, as these are labelled with abbreviations (a) and numbers (b) with the following meaning: 1–7: plastics / 20–22: paper and cardboard / 80–98: composite

materials.

- The product and the packaging materials can be recycled, dispose of them separately for better treatment of waste.

Notes on the guarantee and service handling

The product was produced with great care and under continuous quality control. DELTA-SPORT HANDELSKONTOR GmbH gives private end customers a three-year guarantee on this product from the date of purchase (guarantee period) in accordance with the following provisions

- The guarantee is only valid for material and manufacturing defects. The guarantee does not cover parts that are subject to normal wear and tear and that are thus considered wear parts (e.g. batteries) and it does not cover fragile parts such as switches or parts that are made of glass.
- Claims under this guarantee are excluded if the product has been used incorrectly, improperly, or contrary to the intended purpose, or if the provisions in the instructions for use were not observed, unless the end customer proves that a material or manufacturing defect exists that was not caused by one of the aforementioned circumstances. Claims under the guarantee can only be made within the guarantee period by presenting the original sales receipt. Please therefore keep the original sales receipt.
- The guarantee period is not extended by any repairs carried out under the guarantee, under statutory guarantees, or as a gesture of goodwill. This also applies to replaced and repaired parts. If you wish to make a claim please first contact the service hotline mentioned below or contact us by e-mail. If there is a guarantee case, then the product will be repaired or replaced free of charge to you or the purchase price will be refunded, depending on our choice. There are no further rights from the guarantee. Your legal rights, in particular guarantee claims against the respective seller, are not limited by this guarantee.

IAN: 459143_2401

Service Great Britain

- Tel.: 0800 404 7657
- E-Mail: deltasport@lidl.co.uk

Service Ireland

- Tel.: 1800 101010
- E-Mail: deltasport@lidl.ie

WARNINGS



- KEEP OUT OF REACH OF CHILDREN



- DO NOT DISPOSE OF IN FIRE

-  DO NOT INSERT INCORRECTLY
-  DO NOT DEFORM OR DAMAGE
-  DO NOT OPEN OR DISMANTLE
-  DO NOT MIX DIFFERENT TYPES OR BRANDS
-  DO NOT MIX NEW AND USED
-  DO NOT CHARGE
-  DO NOT TO RAIN OR WATER IMMERSION
-  DO NOT SHORT-CIRCUIT
-  INSERT CORRECTLY
- www.quefairedemesdechets.

Documents / Resources

	<p>LIVARNO home IAN 459143_2401 LED String Lights [pdf] Instruction Manual IAN 459143_2401, IAN 459143_2401 LED String Lights, LED String Lights, String Lights, Lights</p>
---	---

References

- [User Manual](#)

[Manuals+.](#) [Privacy Policy](#)

This website is an independent publication and is neither affiliated with nor endorsed by any of the trademark owners. The "Bluetooth®" word mark and logos are registered trademarks owned by Bluetooth SIG, Inc. The "Wi-Fi®" word mark and logos are registered trademarks owned by the Wi-Fi Alliance. Any use of these marks on this website does not imply any affiliation with or endorsement.