

Littmann 3M CORE Stethoscope



Littmann 3M CORE Stethoscope User Guide

[Home](#) » [LITTMANN](#) » Littmann 3M CORE Stethoscope User Guide 

Contents

- 1 [Littmann 3M CORE Stethoscope](#)
- 2 [Product Information](#)
- 3 [Product Usage Instructions](#)
- 4 [FAQs](#)
- 5 [Quick Start Guide](#)
- 6 [In the Box](#)
- 7 [Notifications](#)
- 8 [Charging](#)
- 9 [CONTACT](#)
- 10 [Documents / Resources](#)
 - 10.1 [References](#)

Littmann®

Littmann 3M CORE Stethoscope



Product Information

- **Specifications:**

- **Product:** CORE Stethoscope
- **Features:** Active Noise Cancelling, Telemedicine and AI features
- **Volume Control:** 7 volume steps
- **Charging Time:** Approximately 2 hours

Product Usage Instructions

- **Eartips:**

- Insert eartips in a forward direction.

- **Active Noise Cancelling:**

- The CORE stethoscope includes active noise cancelling to remove ambient noise. Use the Eko App to turn this feature on or off.

- **Notifications:**

- **Blinking yellow:** Stethoscope is on & seeking device
- **Solid yellow:** The stethoscope is off & charging
- **Green:** Stethoscope is fully charged

- **Volume Control:**

- Adjust the volume using the (+) and (-) buttons. There are 7 volume steps available.

- **Turn On and Off:**

- To turn on the CORE stethoscope, press the power toggle in. The light will flash, indicating it is on. You will now hear amplified sounds in the eartips. To turn it off, press the power toggle again.

- **Recording:**

- When connected to the Eko App, press the (o) button to start recording.

- **Charging:**

- Connect the micro USB cable to the stethoscope and use a compatible USB wall charger. It takes approximately 2 hours to fully charge. The light will turn green once fully charged.

FAQs

- **Where can I find the user manual?**

- You can review the user manual at ekohealth.com/getstarted before using your CORE Stethoscope.

- **How can I contact customer support?**

- If you are in the USA, visit littmann.com/service or call 1-800-228-3957. For international support, visit littmann.com for contact information of your local 3M office.

Quick Start Guide

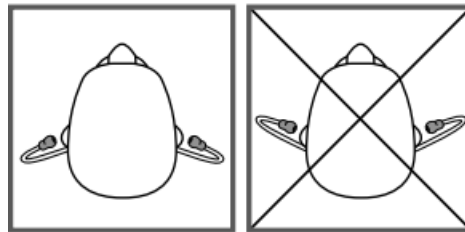
- Download the Eko App from the Apple App Store® or Google Play Store®.
- Turn on Bluetooth® Wireless Technology on your phone or tablet, launch the app, and turn on the CORE stethoscope.

In the Box

- Eko CORE Digital Attachment and 3M™ Littmann® Cardiology IV™ Stethoscope
- An additional set of 3M Littmann Snap Tight Soft-Sealing Eartips (small)
- Nonchill Bell Sleeve
- USB Charging Cable
- Quick Start Guide

Eartips

- Insert eartips in a forward direction.



Volume

- Use the (+) and (-) buttons to adjust volume. There are 7 volume steps.

Turn On and Off

- When the CORE stethoscope is off, it functions as an unamplified stethoscope.
- To turn the CORE stethoscope on, press the power toggle in.
- The light will begin flashing. You will now hear amplified and filtered sounds in the eartips.

Telemedicine and AI Features

- Eko offers telemedicine and AI features that require a software subscription (where available, sold separately).
- You can setup a subscription online at ekohealth.com

Active Noise Cancelling

- The CORE stethoscope includes active noise cancelling to remove ambient noise from the surrounding environment.
- Active noise cancelling can be turned off or on through the Eko App.

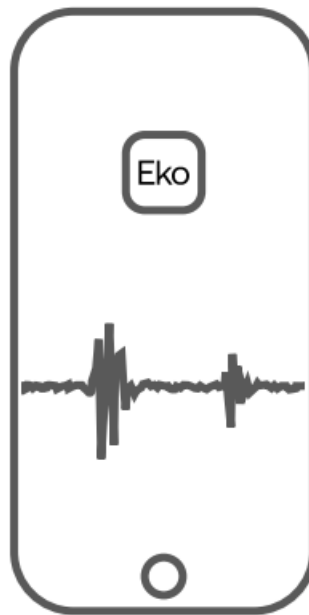


Notifications

- (()) The CORE stethoscope is on & seeking a device
- ● The CORE stethoscope is off & charging
- ((●)) The CORE stethoscope is low on battery
- ○ The CORE stethoscope is on & connected
- ● The CORE stethoscope is fully charged
- ((●)) The CORE stethoscope is recording

Recording

- When connected to the Eko App, press the (o) button to begin recording.



Charging

- Connect the micro USB cable to the CORE stethoscope and use a UL-certified or CE-marked 5V USB wall charger.
- The CORE stethoscope will take about 2 hours to fully charge.
- The light will turn green when it is fully charged.

User Manual

- Review the user manual before using your Littmann CORE Stethoscope. To view the manual visit ekohealth.com/getstarted
- For more information on 3M devices, see HCBGRegulatory.3M.com

Service and Support

- In the USA, please visit littmann.com/service or call 1-800-228-3957. If you are outside of the USA, please visit littmann.com for the contact information of your local 3M office.
- Apple App Store is a trademark of Apple Inc.

- Google Play and the Google Play logo are trademarks of
- Google LLC.
- Bluetooth® is a registered trademark of Bluetooth SIG
- LBL 143 Rev B
- System assembled by 3M Company
- 3M Deutschland GmbH Health Care Business
- www.littmann.com.

CONTACT

- Made in USA with
- Globally Sourced Materials
- w/ 3M Company
- 2510 Conway Ave.
- St. Paul, MN 55144 USA
- **EC REP** 3M Deutschland GmbH
- Health Care Business
- Carl-Schurz-Str. 1
- 41453 Neuss, Germany





- Made in Malaysia
- Eko Devices, Inc.
- 1212 Broadway, Suite 100
- Oakland, CA 94612 USA
- **EC REP** Emergo Europe
- Prinsessegracht 20
- 2514 AP The Hague
- The Netherlands
- ©2020 3M; Eko Devices Inc. All rights reserved.
- 3M, Littmann, the L Littmann logo, the L, and Cardiology IV are marks and/or registered marks of 3M. Unauthorized use is prohibited.
- Eko trademarks, including CORE, are marks and/or registered marks of Eko Devices Inc.
- **Issue Date:** 2020-11
- 34-8726-3344-0

Documents / Resources



[Littmann 3M CORE Stethoscope](#) [pdf] User Guide
M32600EN, 34872633440_Trim, 3M CORE Stethoscope, 3M, CORE Stethoscope, Stethoscope

References

-  [Eko Digital Stethoscopes, AI Disease Detection, & Telehealth](#)
-  [User manuals – Eko Help Center](#)
-  [eIFU Health Care](#)
-  [Littmann Stethoscopes | 3M United States](#)
-  [USA Warranty & Repairs for Littmann Stethoscopes | 3M](#)
- [User Manual](#)

Manuals+, Privacy Policy

This website is an independent publication and is neither affiliated with nor endorsed by any of the trademark owners. The "Bluetooth®" word mark and logos are registered trademarks owned by Bluetooth SIG, Inc. The "Wi-Fi®" word mark and logos are registered trademarks owned by the Wi-Fi Alliance. Any use of these marks on this website does not imply any affiliation with or endorsement.