



LITETRONICS VLF Series Vivid LED Frame Instruction Manual

[Home](#) » [Litetronics](#) » LITETRONICS VLF Series Vivid LED Frame Instruction Manual 

LITETRONICS®

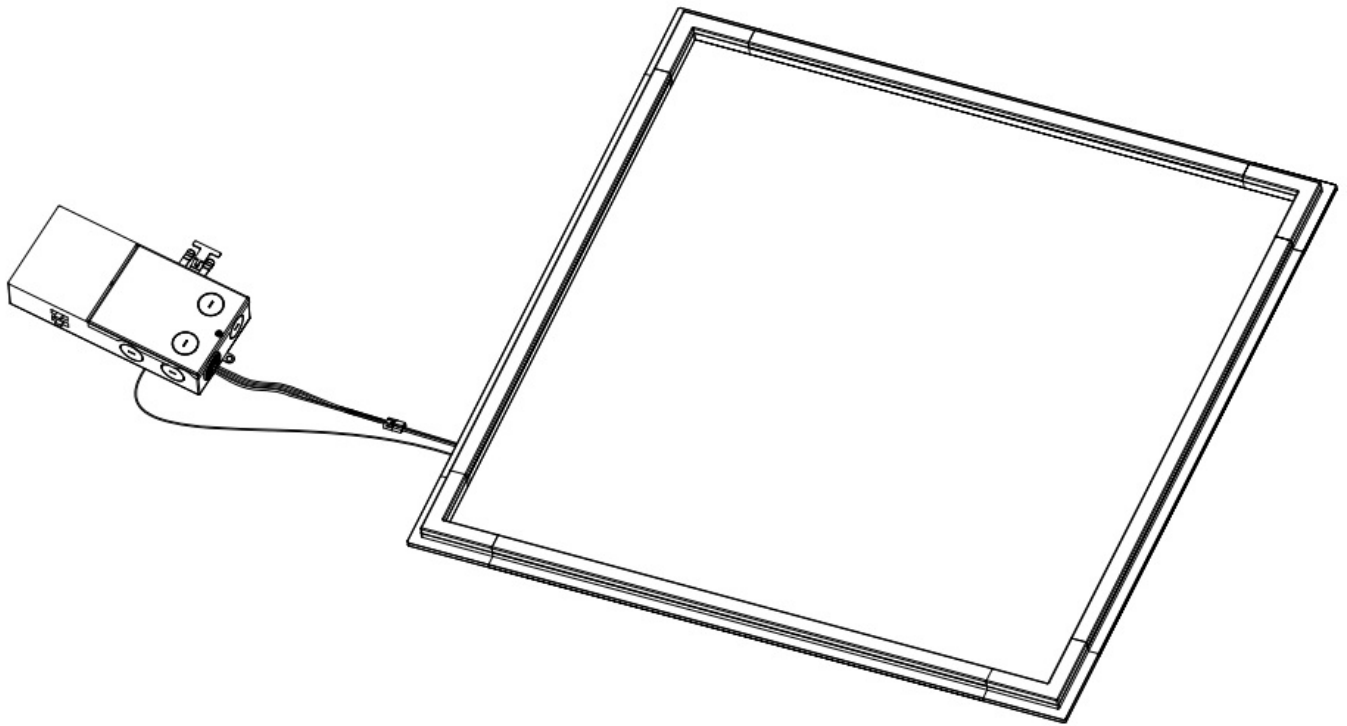
VIVID LED FRAME
Installation Instruction
Ordering Code: VLF Series

Contents

- [1 WHAT COMES IN THE BOX](#)
- [2 INSTALLATION](#)
- [3 Documents / Resources](#)

WHAT COMES IN THE BOX

- (2)L Style bars
- (2)Straight bars
- (1)LED Driver
- (1)Grid mounting clip and screw
- (3)Wiremu's
- (1)Split snap bushing
- (1) Installation instruction



TOOLS NEEDED

- Wire tripper
- Wire Cutter
- Phillips Screwdriver
- Step Ladder

INSTALLATION

BEFORE BEGINNING INSTALLATION, TURN OFF POWER AT THE CIRCUIT BREAKER.

1. Unbox and inspect the Vivid LED Frame to understand it's components.
2. Turn off power at the electrical panel, refer to .
3. Assemble the frame by connecting the two L style bars (part 1) to the straight bars (part 2), refer to 2.
4. Lock the grid mounting clip on driver junction box with screw, refer to 3).
5. Raise the assembled fixture above the grid, then lower it until it rests between the t-grid and tile, refer to 4.
6. Select the preferred wattage and color temperature by adjusting the slide switches located on the driver.

Wattage settings:

- 2'x2' fixture: 18W (2,250 lumens) 127W (3,375 lumens) 136W (4,500 lumens)
- 2'x4' fixture: 24W (3,000 lumens) 135W (4,375 lumens) 45W (5,625 lumens)

CCT settings:

- 3500K 14000K 15000K .

7. Make wiring connections to the driver with wire nuts, following the guidelines below, refer to 5.

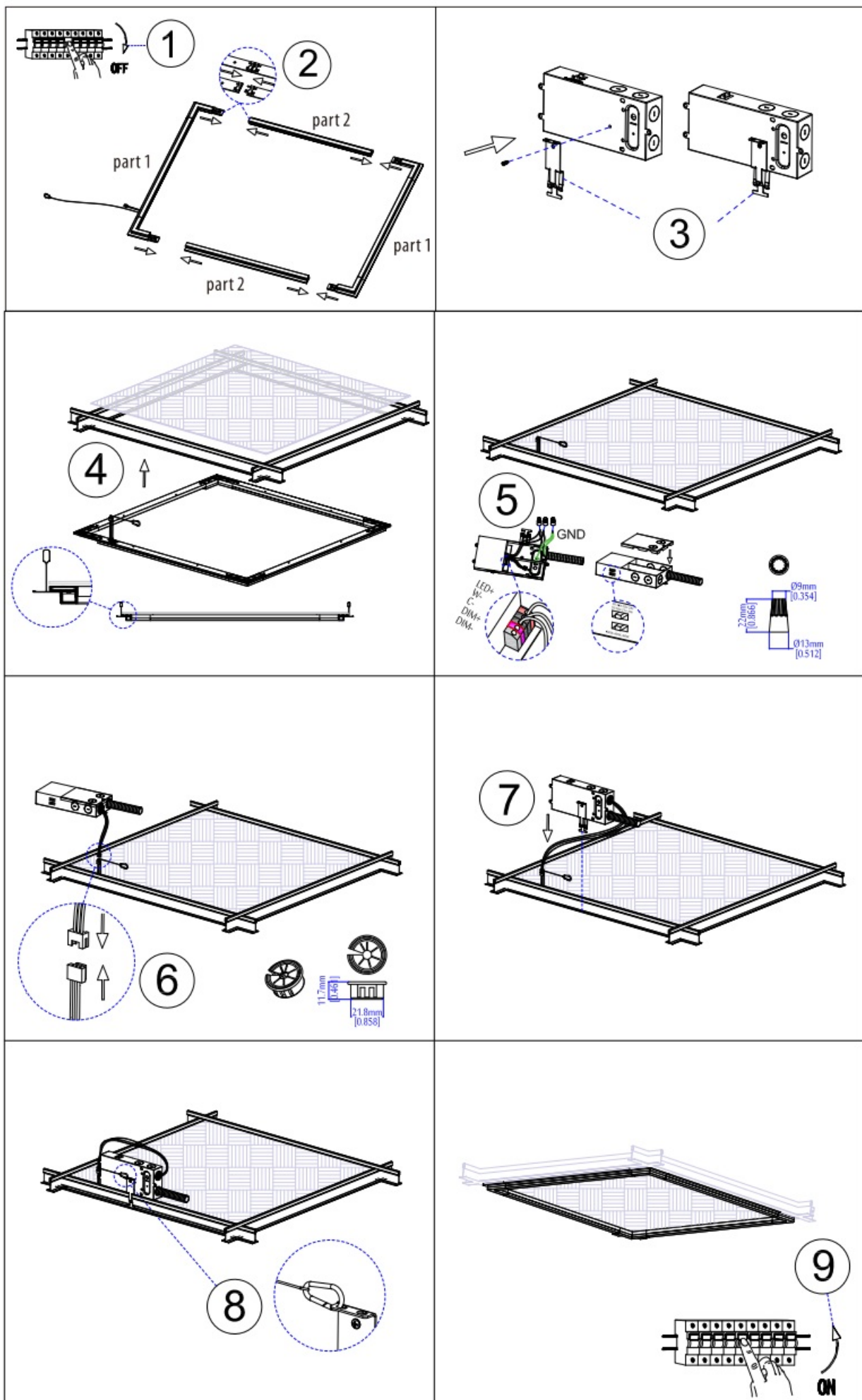
Black = AC Line

Purple=Dimming (+)

White = AC Neutral Pink = Dimming (-)

Green = Ground

8. Punch the knockout, insert the provided snap bushing into the knockout to protect the wires, then connect the female and male DC connectors, refer to (6).
9. Clip the driver to the t-grid close to the fixture power cord, refer to 7.
10. Connect the safety cable on mounting clip, refer to 8.
11. Your installation is complete. Restore power, refer to 9.



Thank you for choosing

LITETRONICS®

6969 W. 73rd Street
Bedford Park, IL 60638

www.Litetronics.com

CustomerService@Litetronics.com or 1-800-860-3392



The information and product specifications contained in these instructions are based upon data believed to be accurate at the time of printing. This information is subject to change without notice and with out incurring liability. If you have questions regarding specific product details, please contact us at 800-860-3392 or via email at customerservice@litetronics.com.

To check for an updated version of these instructions, please visit www.litetronics.com.

Documents / Resources

	<p>LITETRONICS VLF Series Vivid LED Frame [pdf] Instruction Manual VLF Series, Vivid LED Frame, VLF Series Vivid LED Frame, LED Frame, Frame</p>
--	--