



LITETRONICS BCS03 Bluetooth Control Switch Instruction Manual

[Home](#) » [Litetronics](#) » LITETRONICS BCS03 Bluetooth Control Switch Instruction Manual 

Contents

- 1 LITETRONICS BCS03 Bluetooth Control Switch
- 2 Product Information
- 3 Product Usage Instructions
- 4 WHAT COMES IN THE BOX
- 5 SWITCH FUNCTIONALITY
- 6 INSTALLATION
- 7 BATTERY INSTALLATION
- 8 Troubleshooting
- 9 WALL SURFACE INSTALLATION
- 10 DOWNLOAD THE LITESMART APP
- 11 WIRELESS BLUETOOTH SWITCH SET UP
- 12 Documents / Resources
 - 12.1 References

LITETRONICS®

LITETRONICS BCS03 Bluetooth Control Switch



Product Information

The Wireless Bluetooth Switch (BCS03) is a remote-controlled switch that allows you to wirelessly control your fixtures. It can be wall-mounted or placed in a remote location for convenience. This switch is compatible with the Litetronics lighting control system only. It requires two CR2032 batteries (not included) and has a battery life of approximately 5 years based on twice a day usage. Please note that this switch should not be used in a metal region or strong electromagnetic wave area.

Switch Functionality:

- ON/OFF: Turns the fixtures on or off.
- Dim Up: Increases the brightness of the fixtures.
- Dim Down: Decreases the brightness of the fixtures.
- Sensor ON/OFF: Works with a wired PIR motion sensor.
- Scene Switch: Allows you to select three scenes from the LiteSmart App settings.

Product Usage Instructions

Battery Installation:

1. Open the back cover of the remote controller using a flat screwdriver.
2. Insert two CR2032 batteries (sold separately) into the battery compartment.
3. Attach the cover back onto the remote controller.

Wall Surface Installation:

1. Carefully remove the cover plate using scissors.
2. Mark the hole positions on the wall for installation.

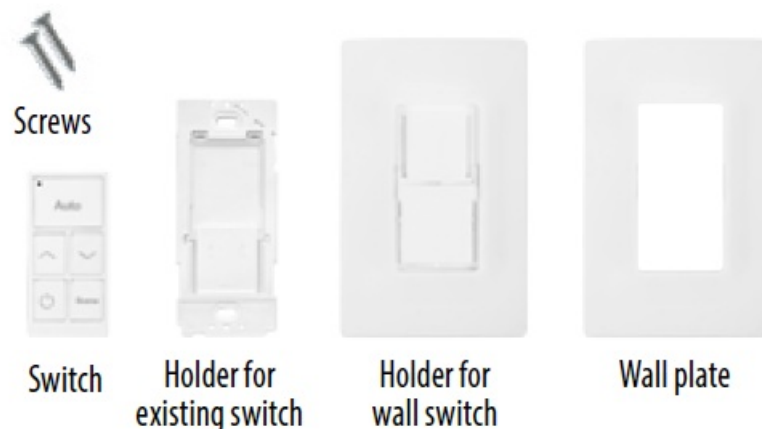
3. Use a power drill to create two holes at the marked positions.
4. Attach the bracket to the wall using the supplied self-tapping screws.
5. Slide the remote controller into the bracket.
6. Attach the wall plate to cover the bracket.

Wireless Bluetooth Switch Setup:

1. Download the LiteSmart mobile app for iOS or Android.
2. Open the app and go to the Switches page. Tap the + icon to add a new switch.
3. The app will scan for recognizable switches. Select the new switch by tapping on the Gear/settings icon.
4. Rename the switch by tapping on the name and save the changes.
5. On the physical switch, press buttons 1 and 2 together for over 2 seconds to enter pairing mode or activate the reset function.
6. Tap Done in the app.
7. Select three scenes to be used with the switch and save the settings.
8. The fixtures will flash three times to confirm that the settings have been saved.
9. Choose the individual lights or group that the switch should be applied to and proceed to the next step.
10. From the switch, you can now power on/off, adjust brightness, or select from the preset scenes.

If you have any questions or need further assistance, please contact Litetronics customer service at 1-800-860-3392 or via email at customerservice@litetronics.com.

WHAT COMES IN THE BOX



- Switch
- Holder for existing switch
- Holder for wall switch
- Wall Plate
- Screws (2)
- Installation Instructions

REQUIRED

- Two CR2032 batteries (not included)

TOOLS NEEDED

- Phillips and flathead screwdriver
- Power drill

ATTENTION

1. Please check if there is any damage during shipping. If so, please contact Litetronics customer service.
2. Please read the installation instruction carefully to check whether all the accessories are included.
3. After confirmation, install the switch according to installation steps.

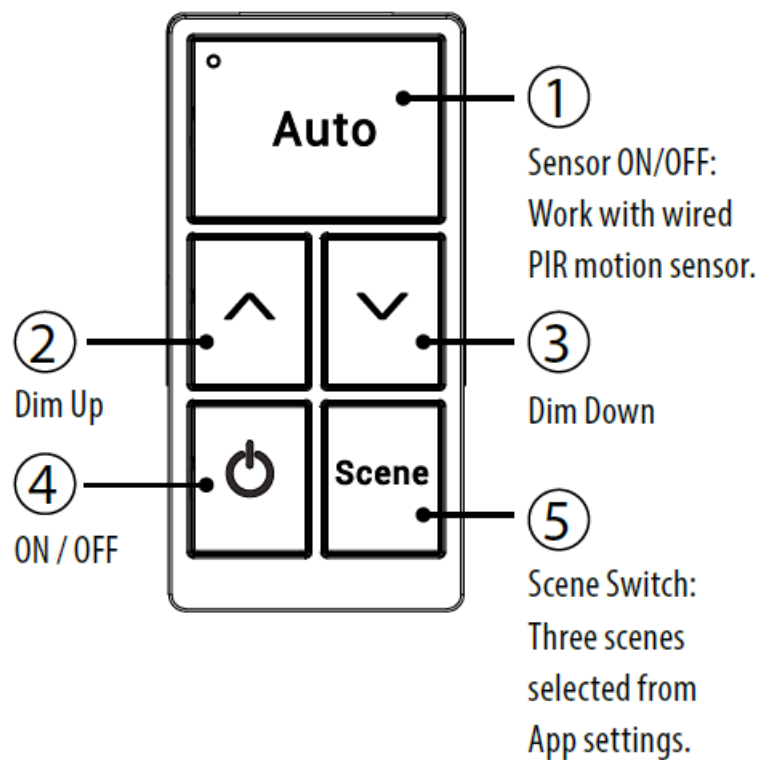
Tip: This Bluetooth device is compatible with Litetronics lighting control system only.

Important: Battery model #CR2032 can be used for 5 years based on twice a day usage.

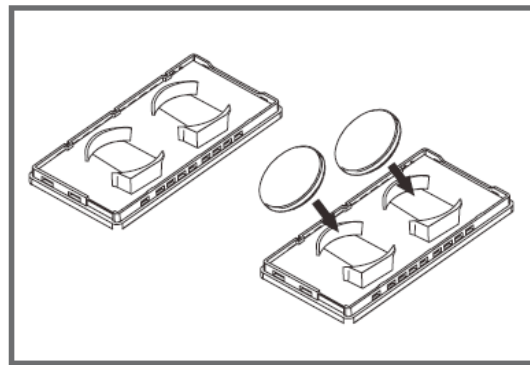
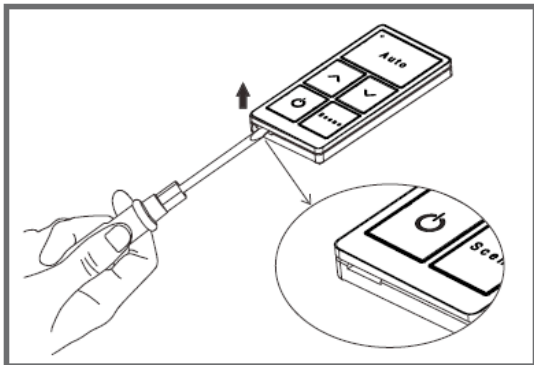
Note: Do not use in a metal region or strong, electromagnetic wave area.

SWITCH FUNCTIONALITY

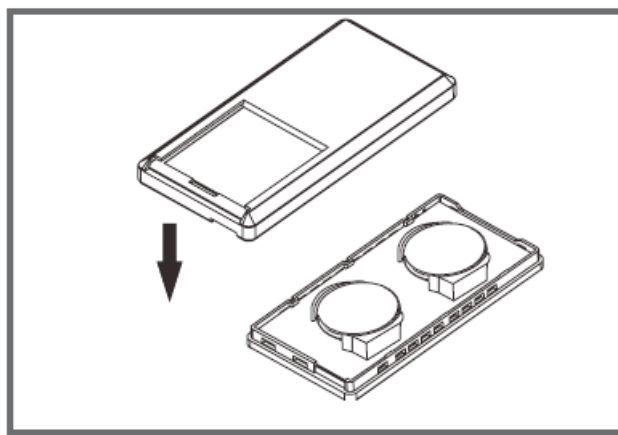
Fixtures can be controlled wirelessly through a remote Bluetooth switch, which can be wall mounted or remotely located for convenience



INSTALLATION



1. Battery installation – Page 2
2. Wall surface installation – Page 2
3. Wireless Bluetooth switch set up – Page 3



Note: Install LiteSmart App before setting the switch.

BATTERY INSTALLATION

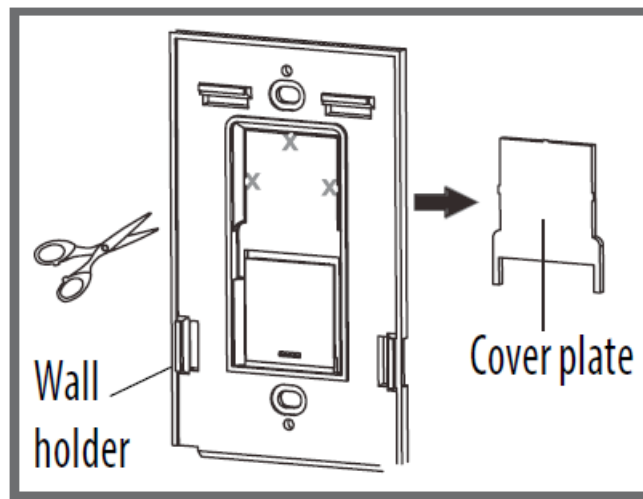
1. Open the back cover of the remote controller with a flat screw driver.
2. Install two CR2032 batteries (sold separately)
3. Attach the cover.

Troubleshooting

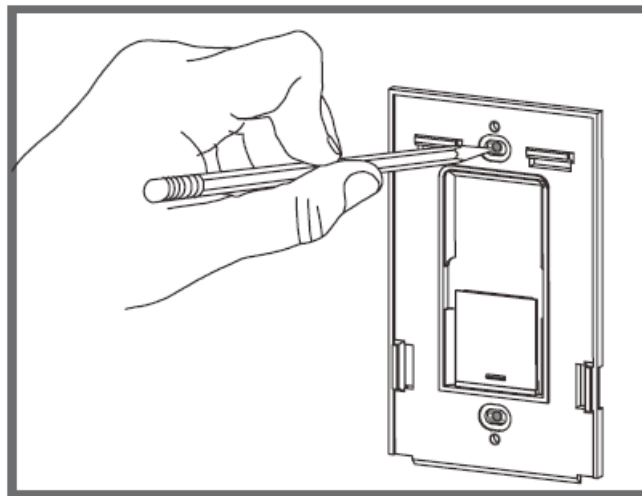
When the voltage is less than 2.6V, press any buttons and the red light flashes.

WALL SURFACE INSTALLATION

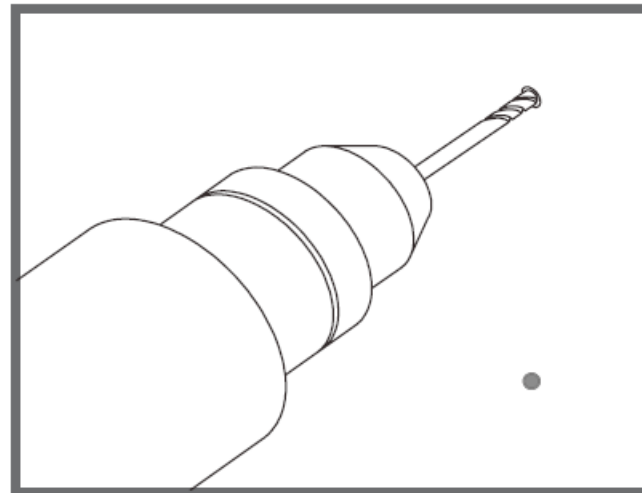
1. Remove the cover plate carefully with scissors



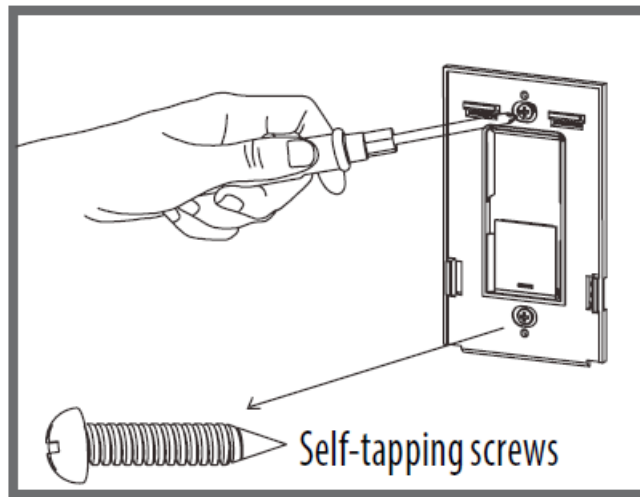
2. Mark hole position as required for installation.



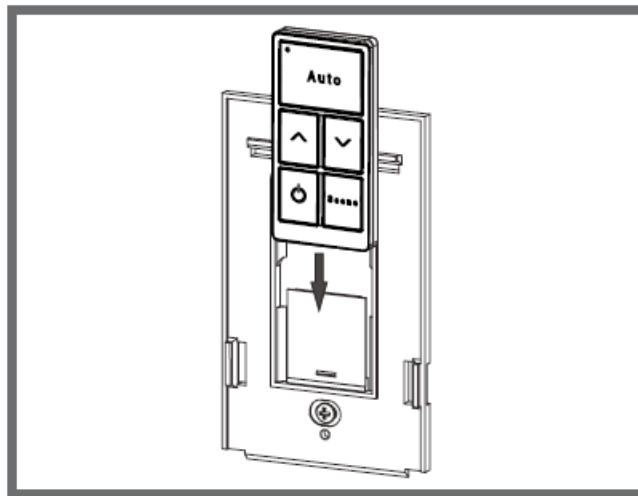
3. Drill two holes with power drill.



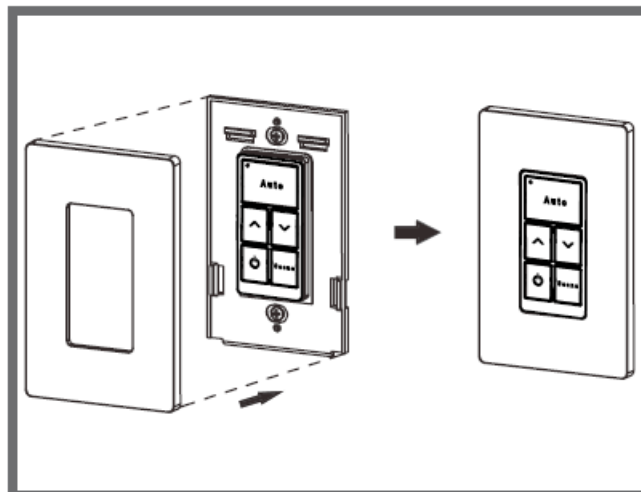
4. Attach the bracket with supplied self-tapping screws.



5. Slide remote controller into the bracket.



6. Attach the wall plate.



DOWNLOAD THE LITESMART APP



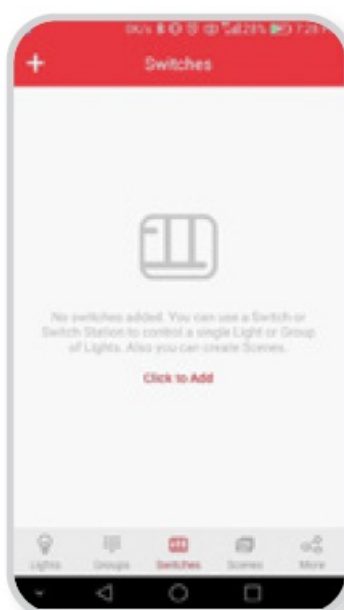
LITESMART

Download the LiteSmart mobile app for iOS or Android. Scan QR code below



WIRELESS BLUETOOTH SWITCH SET UP

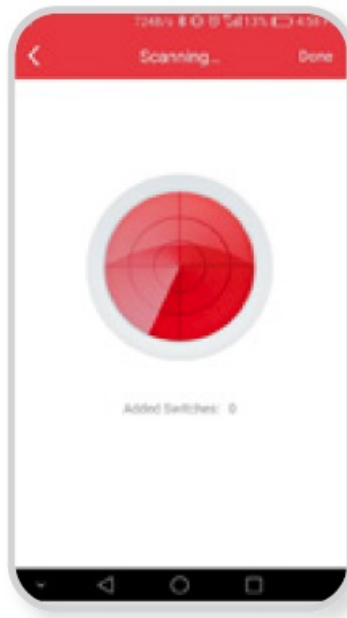
1. Go to the Switches page and tap + icon to add a new switch.



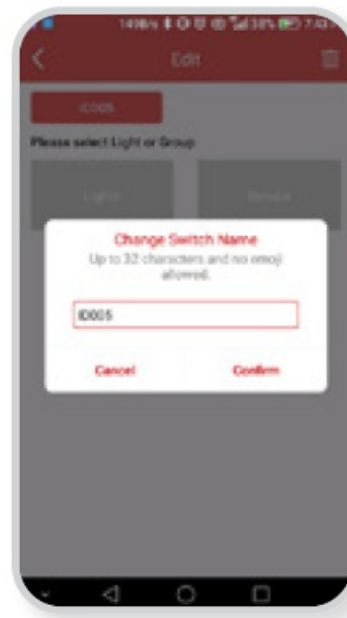
2. LiteSmart will scan for recognizable switches.
3. On the switch, press buttons and (see switch functionality illustration) together over 2 seconds to enter pairing mode or activate reset function.

This switch can be rescanned in the next 30 seconds.

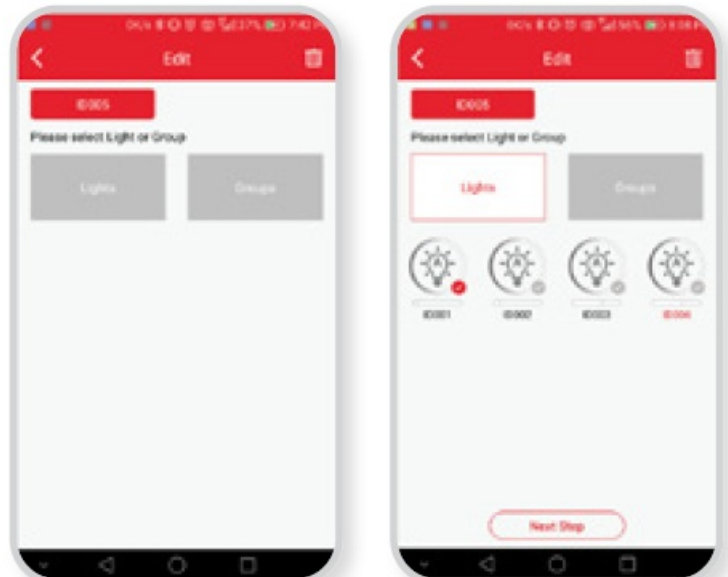
4. Tap Done.



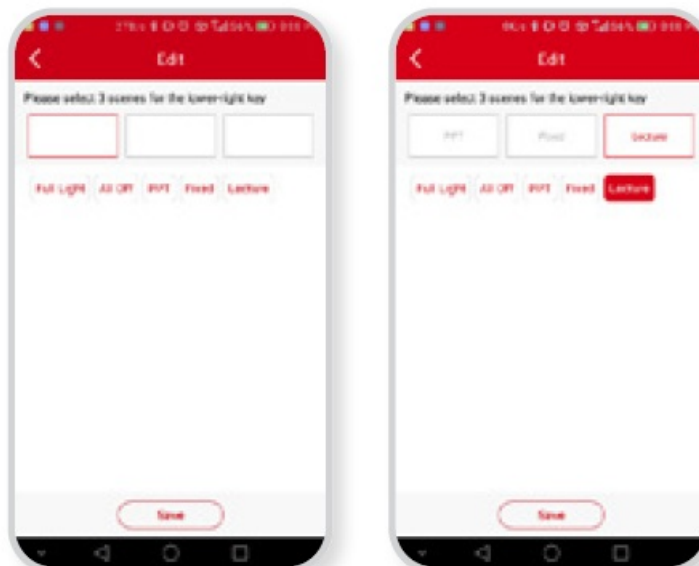
5. Choose the new switch by tapping on the Gear/settings icon.
6. Rename the switch by tapping on the name. Rename and tap Save.



7. Next, choose the individual lights or group that the switch should be applied to. Then tap Next Step.
8. Select three scenes to be used via the switch, then tap Save.



9. The fixtures will flash 3 times to confirm the settings have been saved.



10. From the switch, you can now power on/ off, brighten or dim, or select from the preset Scene.



The information and product specifications contained in these instructions are based upon data believed to be accurate at the time of printing. This information is subject to change without notice and without incurring liability. If you have questions regarding specific product details, please contact us at 800-860-3392 or via email at customerservice@litetronics.com. To check for an updated version of these instructions, please visit www.litetronics.com.

Documents / Resources

The thumbnail shows the front cover of the instruction manual for the LITETRONICS BCS03 Bluetooth Control Switch. It features the LITETRONICS logo at the top left, followed by the product name 'Bluetooth Control Switch BCS03'. Below this, there are several small images: a white rectangular switch, a smartphone displaying the LITETRONICS app, and a close-up of the switch's buttons. The cover also includes some text in a smaller font, likely a brief overview of the product and its features.

LITETRONICS BCS03 Bluetooth Control Switch [pdf] Instruction Manual
BCS03 Bluetooth Control Switch, BCS03, Bluetooth Control Switch, Control Switch, Switch

References

-  [Commercial Lighting Company | LED Lighting Solutions](#)