



LIT LOGOS 13 Plus Focus and Fiesta ST Control Box Installation Guide

[Home](#) » [LIT LOGOS](#) » LIT LOGOS 13 Plus Focus and Fiesta ST Control Box Installation Guide 

Contents

- [1 LIT LOGOS 13 Plus Focus and Fiesta ST Control Box](#)
- [2 INCLUDED PARTS](#)
- [3 HOW TO INSTALL](#)
- [4 LED HUE BLUETOOTH APP](#)
- [5 TROUBLESHOOTING STEPS](#)
- [6 Documents / Resources](#)
- [7 Related Posts](#)

LIT LOGOS

LIT LOGOS 13 Plus Focus and Fiesta ST Control Box



INCLUDED PARTS

- 1 -Lit Logos decal
- 1 -ST Stencil
- 1 -Lit Logos ST LED Housing
- 1 -Lit Logos ST Badge
- 1 -Lit Logos Control Box

HOW TO INSTALL

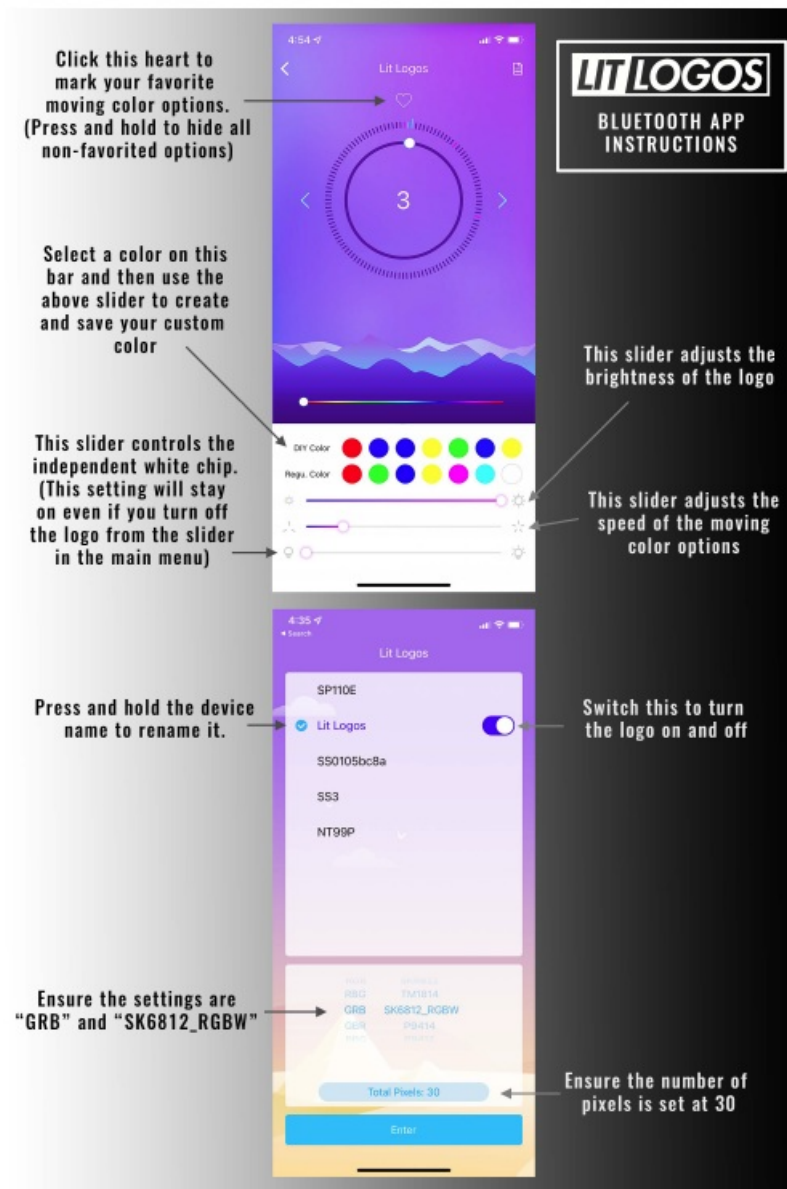
1. Disconnect the car battery
2. Remove the front bumper to gain access to the backside of the grill. If you have a 2015+ Facelift Focus ST, you can remove the front grill by pulling it out. Other years it is required to remove the front bumper.
3. Remove the OEM ST badge from the front grill. It is held on via mounting tape. You can use heat along with fishing wire or dental floss to run behind the badge to remove it. Be sure to clean off ALL of the remaining adhesive from the grill prior to moving on to the next step.
4. Place the supplied paper stencil onto the grill where the OEM ST badge was located. Your goal is to line it up so that the inner portion is fully over solid plastic the whole time. Mark the inside of the stencil with silver sharpie. This marked area be used to ensure you are clearancing enough space to allow the light to pass through the grill. This stencil is the exact same dimensions as the front ST badge we supply, so make sure you are happy with the positioning, and that there is enough material remaining to adhere to. Measure twice, cut once.
5. Using a dremel, cut out only the section marked with sharpie to allow light to pass through the grill.
The stencil is designed to be the exact size of the badge, but you may need to remove slightly more material to ensure the light is unobscured when passing through the grill. Before adhering the badge to the front of the grill, shine a light through the backside of the grill and place the front badge up to where you plan to install it. Any dark spots in the badge will show you where you need to cut a little more room before finishing.
6. Once the grill has enough clearance to allow light to pass through unobscured to the front badge, install the front badge using the supplied 3M tape.
Ensure that the surface you are adhering to is 100% clean and free of any debris. Hold pressure on the left and right side of the badge for 30 seconds – 1 minute to ensure the badge gets a good bond with the plastic.
7. Install the LED Housing to the backside of the grill using the supplied 3M tape.
See previous step for instructions to ensure a solid bond is made between the 3M and plastic.
8. Find which power source you want to connect the logo to. Any 12V power source will work so you can select a fuse, headlight wire, or even wire it directly to the battery. A 5A fuse is required for install regardless of power source.
9. Once the grill has enough clearance to allow light to pass through unobscured to the front badge, install the front badge using the supplied 3M tape.
Ensure that the surface you are adhering to is 100% clean and free of any debris. Hold pressure on the left and right side of the badge for 30 seconds – 1 minute to ensure the badge gets a good bond with the plastic.
10. Route the power and ground wire from the control box to the location you chose to power the logo, avoiding any high heat areas or moving parts.
11. Tuck the Control Box out of the way, but still within reach of the front bumper where you installed the logo.
Be sure to place this somewhere that wont be hit by road debris, direct water, or high heat. This is the brains of the Lit Logo. It is water and heat-resistant, but high-pressure water or extreme temperatures can damage the

electronics.

12. Reinstall the bumper and re-connect the battery.

LED HUE BLUETOOTH APP

Download the LEDHue app from the App Store/Google Play store. Below are some tips for using the LEDHue app to control your Lit Logo:



TROUBLESHOOTING STEPS

We hope you never have any issues with your logo, but if you do, here are the best steps to take to get it working again as quickly as possible:

- Turn off Bluetooth on your phone, uninstall and reinstall the app, and try to connect to the logo again.
- Ensure the ground source is clean and connected directly to unpainted metal. We recommend connecting the ground wire to the same location the battery is grounded to.
- Try a different power source. Sometimes a fuse tap won't reach far enough into the fuse or the wire won't provide enough power, so try connecting the log directly to the battery with an inline fuse.
- Check the app and ensure the logo is set to "GRBSK6812_RGBW" and the pixels should be set to 30.

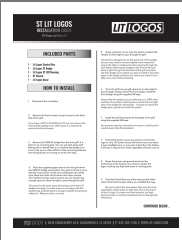
- Make sure the logo is switched to the “on” position in the app.
- Make sure that the bottom slider on the app control is turned all the way down.
- Make sure that the top slider on the app control is turned all the way up.
- Try using a different phone to connect to the logo.
- Check that the arrows on the quick disconnect between the logo and the control box are pointing toward each other.
- Disconnect the logo from power and leave off for 12 hours.

6839 CORALBERRY LN N, JACKSONVILLE, FL 32244

P: 434-209-7166

WWW.LIT-LOGOS.COM

Documents / Resources

	<p>LIT LOGOS 13 Plus Focus and Fiesta ST Control Box [pdf] Installation Guide 13 Plus Focus and Fiesta ST Control Box, Focus and Fiesta ST Control Box, Fiesta ST Control Box, ST Control Box, Control Box</p>
---	--