



LIT by CARDI LUMIK06 LED Tracklight Instruction Manual

[Home](#) » [LIT by CARDI](#) » LIT by CARDI LUMIK06 LED Tracklight Instruction Manual 

Contents

- [1 LIT by CARDI LUMIK06 LED Tracklight](#)
- [2 Product Information](#)
- [3 Product Usage Instructions](#)
 - [3.1 HOW TO FIX](#)
 - [3.2 HOW TO USE](#)
 - [3.3 220-240V~ 50/60Hz IP20](#)
 - [3.4 Documents / Resources](#)
 - [3.4.1 References](#)



LIT by CARDI LUMIK06 LED Tracklight



Product Information

The product is a range of LED downlights with six different models available LUMIK01, LUMIK02, LUMIK03, LUMIK04, LUMIK05, and LUMIK06. The downlights come in two different sizes: 60*230mm and 80*271mm for LUMIK01, LUMIK04, and LUMIK02, LUMIK05 respectively, and 90*303mm for LUMIK03 and LUMIK06. The color options available are white and black. The downlights have three different color temperature options: 3000K, 4000K, and 5000K. The power output ranges from 14W to 39W depending on the model. The downlights have a CRI (Color Rendering Index) of over 90 and a lifetime of 50,000hours. The product is compatible with specific dimmer brands and part numbers listed below

Dimmer Brand	Part Number
Legrand	Yokis MTV500E
Legrand	Hager WXF060
Legrand	Hager WXF061
Legrand	67083 18W45
Legrand	67083 16W48

The product is manufactured by Sonepar Global Sourcing SA, located at Geneva Business Centre, Avenue des Morgines 12, CH-1213 Petit Lancy, Switzerland. The importers are Litbycardi (www.litbycardi.com/home/where)

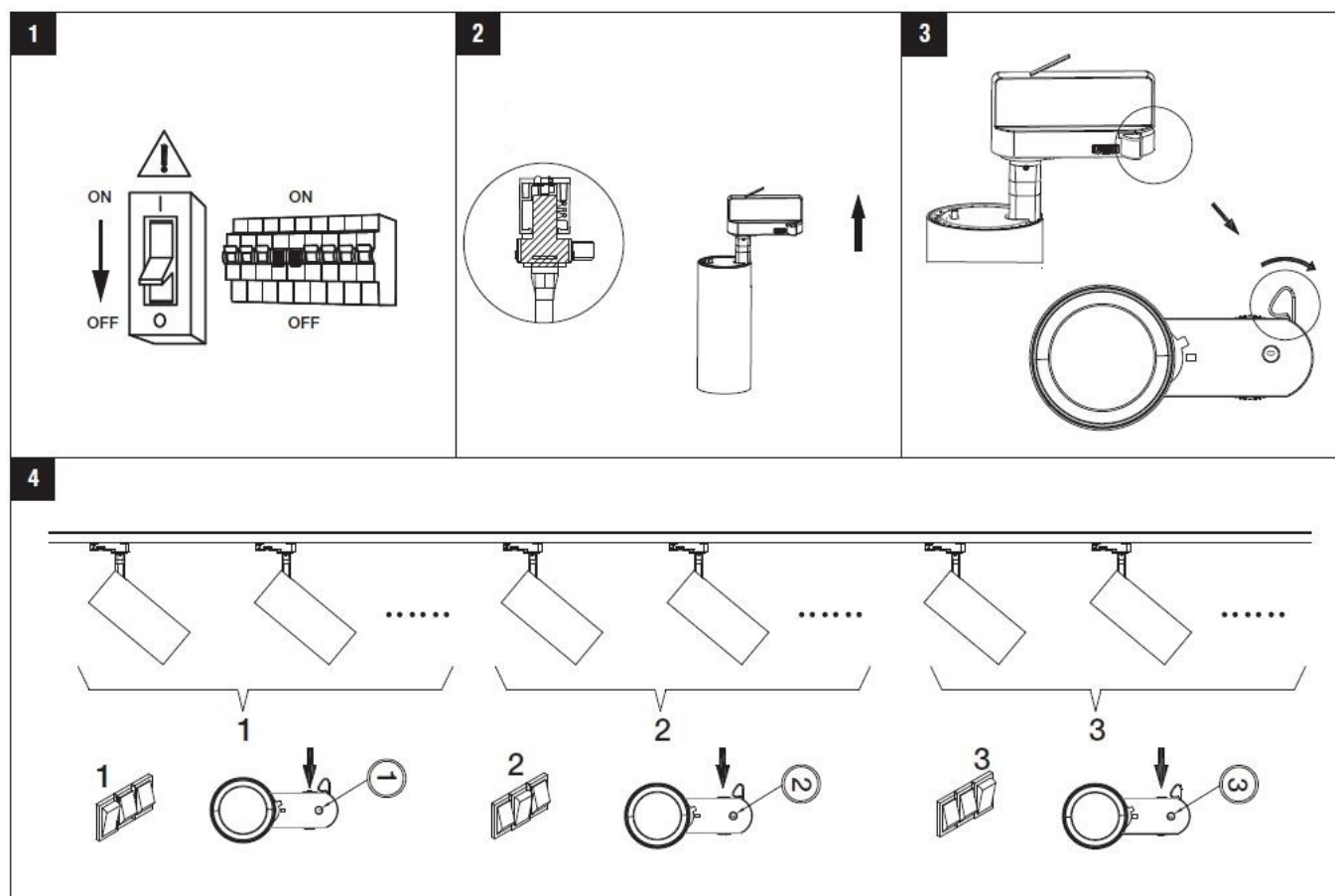
Product Usage Instructions

To use the downlights, follow the steps below

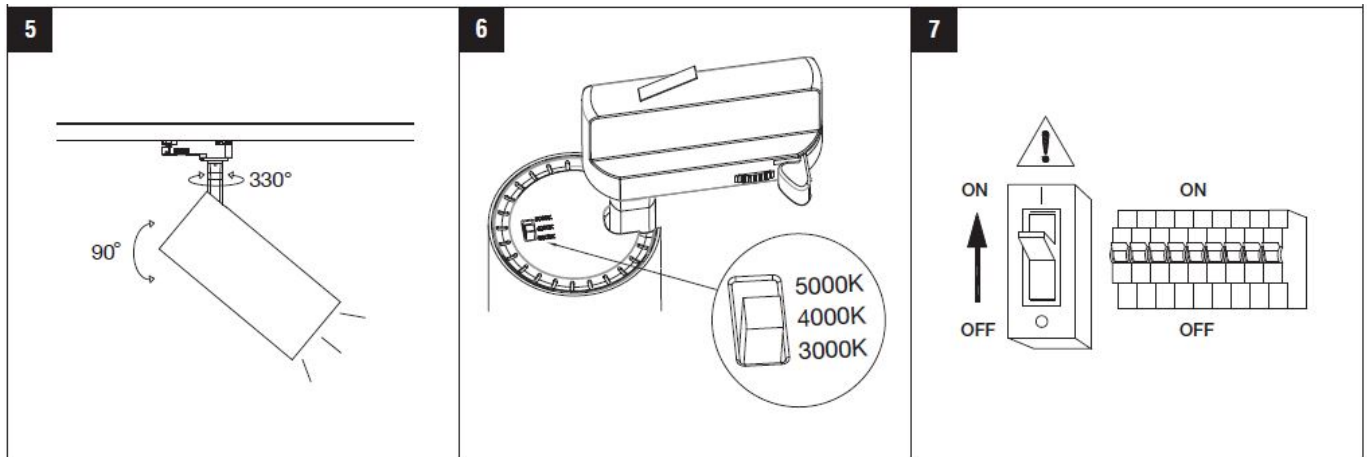
1. Ensure that the power source is turned off before installation or maintenance.
2. Install the downlights in the desired location following the installation instructions provided with the product.
3. Turn on the power source.
4. The downlights can be dimmed using specific dimmer brands and part numbers listed in the product information section.
5. The color temperature of the downlights can be adjusted by toggling between the options available: 3000K, 4000K, and 5000K.

For any further assistance or questions related to product usage, please refer to the user manual or contact the manufacturer or importer.

HOW TO FIX



HOW TO USE




* Model	SGSO Sku	* Size	Color	* CCT	* Power	* CRI	Lumen	* Life time	* BA
LUMIK01	0017440092	Φ60*230mm	White	3000K/4000K/5000K	14W	>90	1050	50000H	36°
LUMIK02	0017440093	Φ80*271mm	White	3000K/4000K/5000K	28W	>90	2250	50000H	36°
LUMIK03	0017440094	Φ90*303mm	White	3000K/4000K/5000K	39W	>90	2800	50000H	36°
LUMIK04	0017440095	Φ60*230mm	Black	3000K/4000K/5000K	14W	>90	1050	50000H	36°
LUMIK05	0017440096	Φ80*271mm	Black	3000K/4000K/5000K	28W	>90	2250	50000H	36°
LUMIK06	0017440097	Φ90*303mm	Black	3000K/4000K/5000K	39W	>90	2800	50000H	36°

220-240V~ 50/60Hz IP20

WARNING

1. Ensure that the main electrical supply is switched off before installing the luminaire.
2. This product has LED build-in, the light source of this luminaire is not replaceable; when the light source reaches its end of life the whole luminaire shall be replaced.\
3. Only to be installed outside arm's reach.
4. This product contains a light source of energy efficiency class F.
5. This marking indicates that this product should not be disposed with other household wastes. To prevent possible harm to the environment or human health from uncontrolled waste disposal, recycle it responsibly to promote the sustainable reuse of material resources. To return your used device, please use the return and collection systems or contact the retailer where the product was purchased. They can take this product for environmental safe recycling.

Documents / Resources

	<p>LIT by CARDI LUMIK06 LED Tracklight [pdf] Instruction Manual LUMIK01, LUMIK02, LUMIK03, LUMIK04, LUMIK05, LUMIK06, LUMIK06 LED Tracklight, LED T racklight, Tracklight</p>
---	---

References

-  [where](#)

Manuals+.