



LIT by CARDI LUJUM08 Jumper Projector Instruction Manual

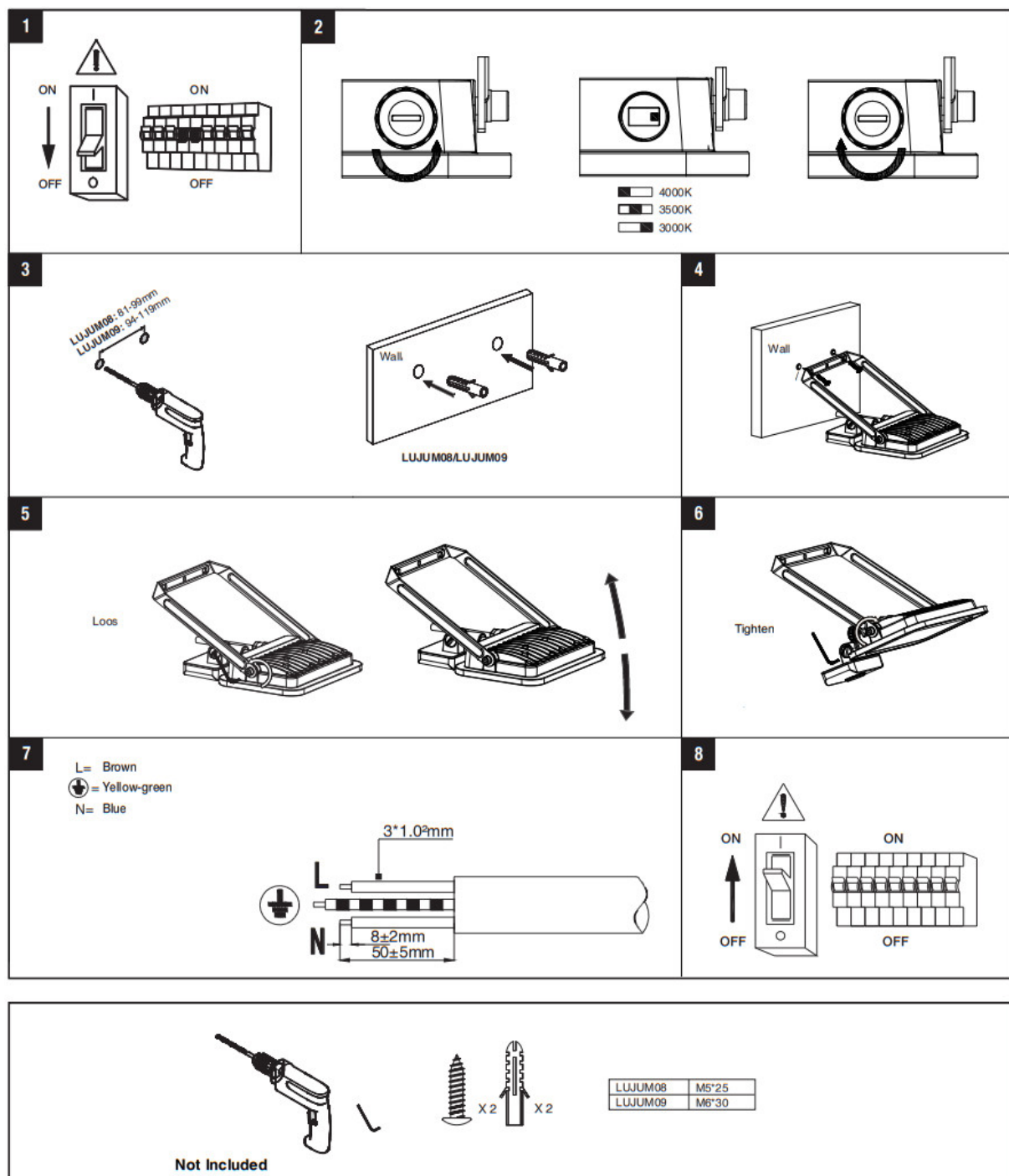
[Home](#) » [LIT by CARDI](#) » LIT by CARDI LUJUM08 Jumper Projector Instruction Manual 



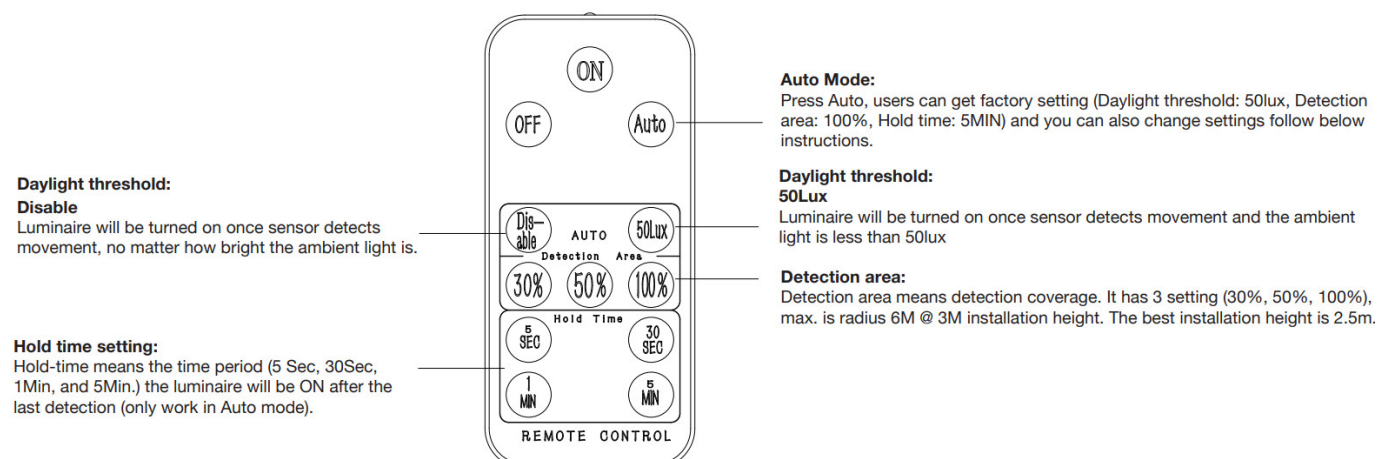
Contents

- [1 LUJUM08 Jumper Projector](#)
- [2 Remote & Sensor](#)
- [3 Documents / Resources](#)
 - [3.1 References](#)

LUJUM08 Jumper Projector



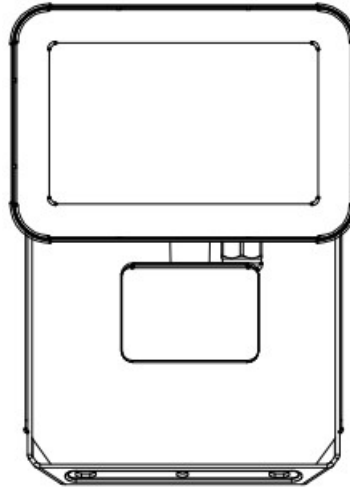
Remote & Sensor



Sensing Range: 150° @ 3M installation height

Sensing Distance: Max. radius 6M @3M installation height.

Installation Height: 1.0~3.0M




* Model	SGSO S ku	* Size	* CCT	* Power	* CRI	Lumen	* Life ti me	* BA
LUJUM0 8	1744010 5	160*223*28mm	3000K/3500K/40 00K	30W	>80	3200lm	50000H	110°
LUJUM0 9	1744010 6	200*245*28mm	3000K/3500K/40 00K	50W	>80	5400lm	50000H	110°

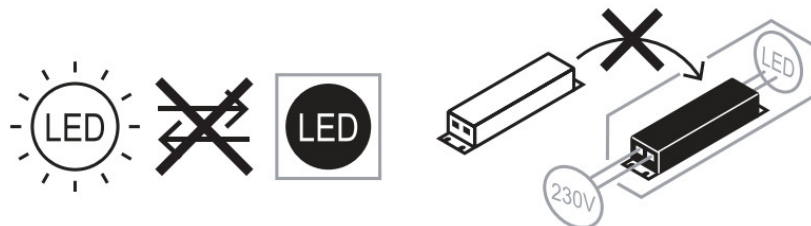
- Model
- Size
- CCT
- Power
- CRI
- Life time
- BA

220-240V~ 50/60Hz IP44 IK07    -20°C~40°C (ta 40°C)

WARNING:

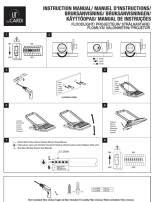
1. Ensure that the main electrical supply is switched off before installing the luminaire.
2. This product has LED build-in, the light source of this luminaire is not replaceable; when the light source reaches its end of life the whole luminaire shall be replaced.
3. The external flexible cable or cord of this luminaire cannot be replaced; if the cord is damaged, the luminaire shall be destroyed.
4. Terminal block not included. Installation must be performed by a qualified person. This fixture is IP44 for outdoor use, and it must be wiring via waterproof connector or connect to waterproof receptacle.
5. The luminaire should be at least 0.25m distance from projection object. Mounting height>5m. Constituted with tempered safety glass that fractures into small pieces.
6. This product contains a light source of energy efficiency class E.
7.  This marking indicates that this product should not be disposed with other household wastes. To prevent

possible harm to the environment or human health from uncontrolled waste disposal, recycle it responsibly to promote the sustainable reuse of material resources. To return your used device, please use the return and collection systems or contact the retailer where the product was purchased. They can take this product for environmental safe recycling.



Manufacturer: Sonepar Global Sourcing SA
Geneva Business Centre, Avenue des Morgines 12, CH-1213 Petit Lancy, Switzerland
Importers: www.litbycardi.com/home/where
Contact: Sonepar France Interservices, 18-20 Quai Du Point Du Jour,
92100 Boulogne-Billancourt, France
IM-LF-IP65-NDIM-DS-002-EU-V03

Documents / Resources

	<p>LIT by CARDI LUJUM08 Jumper Projector [pdf] Instruction Manual LUJUM08, LUJUM09, LUJUM08 Jumper Projector, LUJUM08, Jumper Projector, Projector</p>
--	--

References

- [I where](#)