



LIT by CARDI LED120 Linear Light Instruction Manual

[Home](#) » [LIT by CARDI](#) » LIT by CARDI LED120 Linear Light Instruction Manual 

Contents

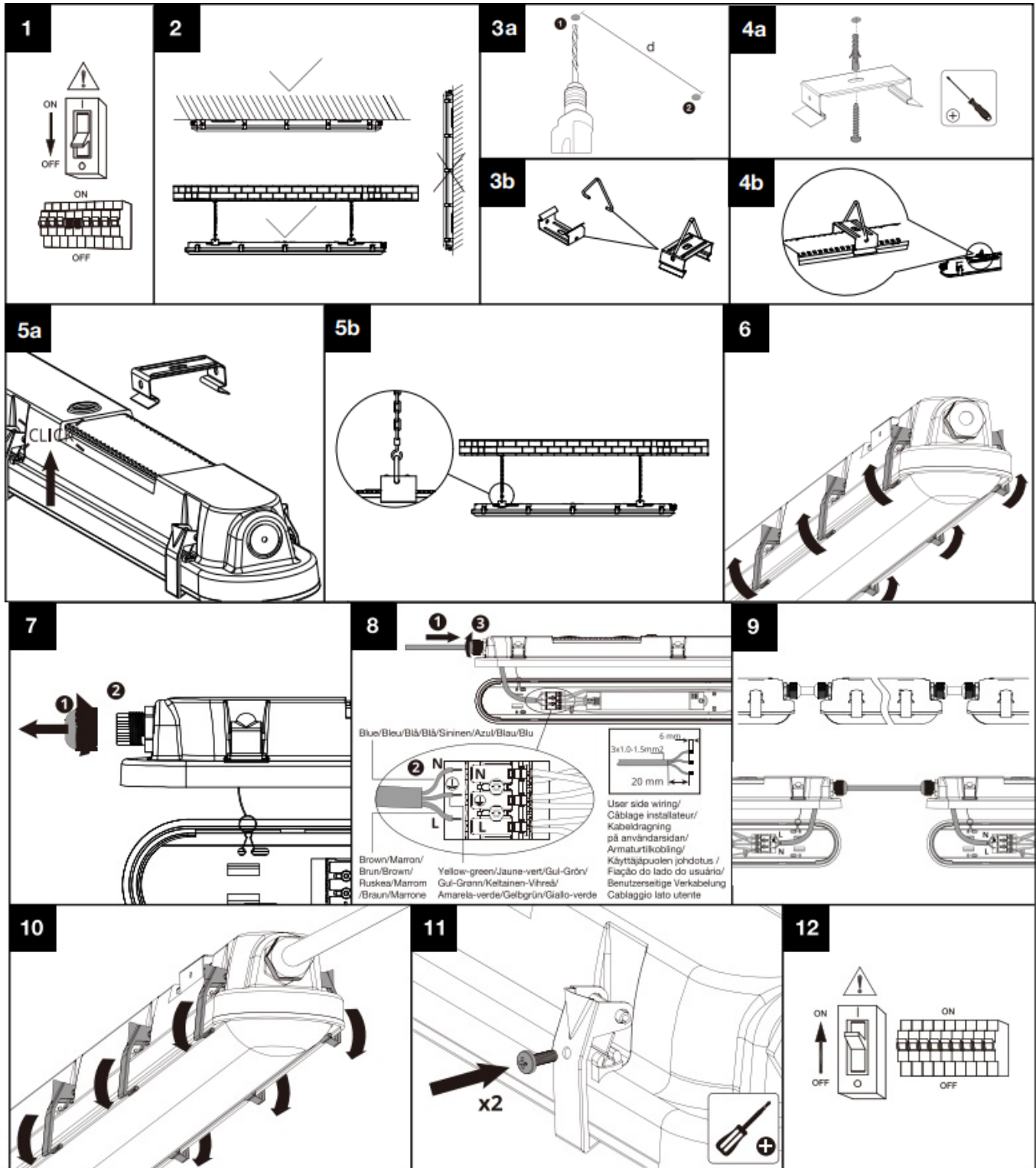
- [1 LIT by CARDI LED120 Linear Light Instruction](#)
- [2 INSTRUCTION](#)
- [3 Dimensions](#)
- [4 Documents / Resources](#)
 - [4.1 References](#)
- [5 Related Posts](#)



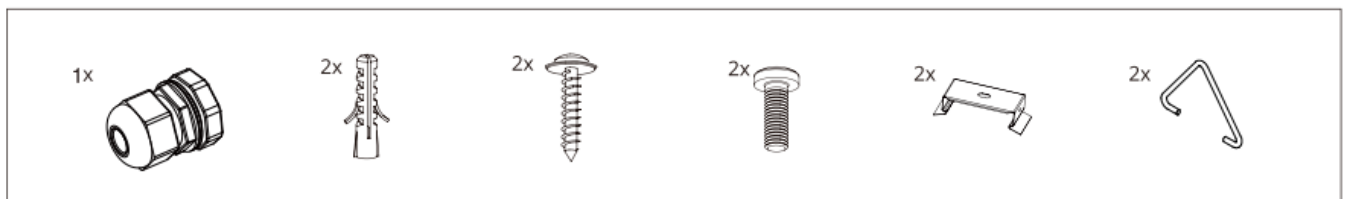
LIT by CARDI LED120 Linear Light Instruction



INSTRUCTION



Dimensions



• Model	SGSO Sku	• Size(L*W*H)	• CCT	• Power	• CRI	• Lumen	• Life time	• BA	• d
LUROC01	0028920118	1210*82*75mm	4000K	36W	>80	5040lm	50000H	110°	700-900mm

- Model
- Size
- CCT
- Power
- CRI/ IRC
- Life time
- BA

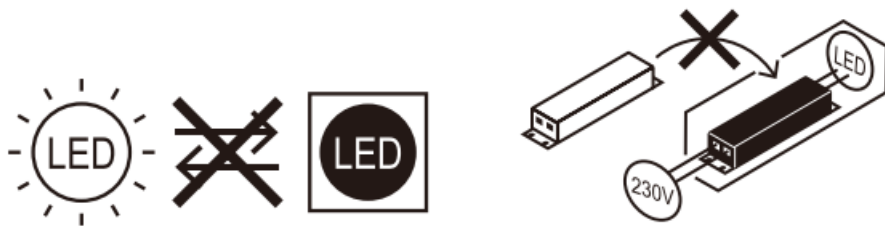
220-240V~ 50/60Hz IP65 IK08



WARNING:



1. This luminaire is linkable, and the maximum link power must be less than 1500W.
2. Ensure that the main electrical supply is switched off before installing the luminaire.
3. This product has LED build-in, the light source of this luminaire is not replaceable;
When the light source reaches its end of life the whole luminaire shall be replaced.
4. This product contains a light source of energy efficiency class <C>.
5. This marking indicates that this product should not be disposed with other household wastes throughout the EU. To prevent possible harm to the environment or human health from uncontrolled waste disposal, recycle it responsibly to promote the sustainable reuse of material resources. To return your used device, please use the return and collection systems or contact the retailer where the product was purchased. They can take this product for environmental safe recycling.

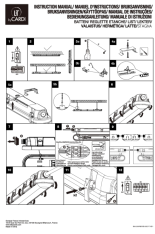


Sonepar France Interservices

18-20 Quai Du Point Du Jour, 92100 Boulogne-Billancourt, France www.litbycardi.com

Made in China

Documents / Resources



[LIT by CARDI LED120 Linear Light](#) [pdf] Instruction Manual
LED120 Linear Light, LED120, Linear Light, Light

References

- [Home Page](#)

[Manuals+.](#)